

## SECTION 3F: REPRINT CERTIFICATE OF REGISTRATION

### TRANSACTION TYPE SELECTION:

**Main Menu**

---

dotdmr processing on behalf of TEST EMV FLEET - F049

---

This system has been designed to walk you through each available transaction. Simply select the appropriate radio button and click "Next" to begin the step-by-step instructions.

Create Fleet  
 Maintain Fleet  
 Forms and reports  
 Bank account information

**Navigation tip:** To move from page to page in e-MV Agent, be sure to use the controls at the top or bottom of each page. **Don't use the "Back" or "Forward" buttons on your browser.**  
**Note:** This tool requires a Java-enabled browser, such as Netscape Navigator v 6.0 and above, or Microsoft Internet Explorer v 5.0 and above.

---

Select **Maintain Fleet**. Click **Next**

**Select Fleet**

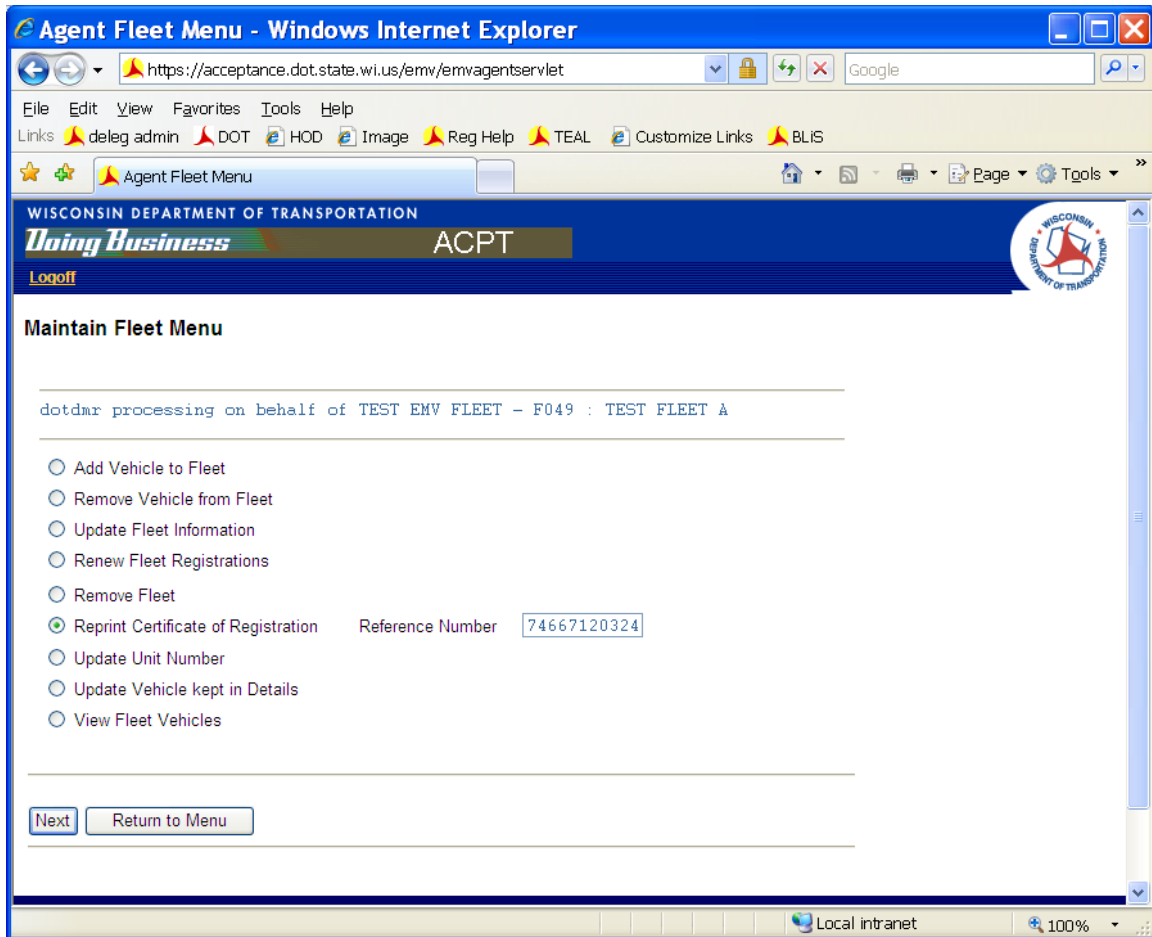
---

dotdmr processing on behalf of TEST EMV FLEET - F049

TEST FLEET A  
 TEST FLEET 1  
 TEST FLEET 123

---

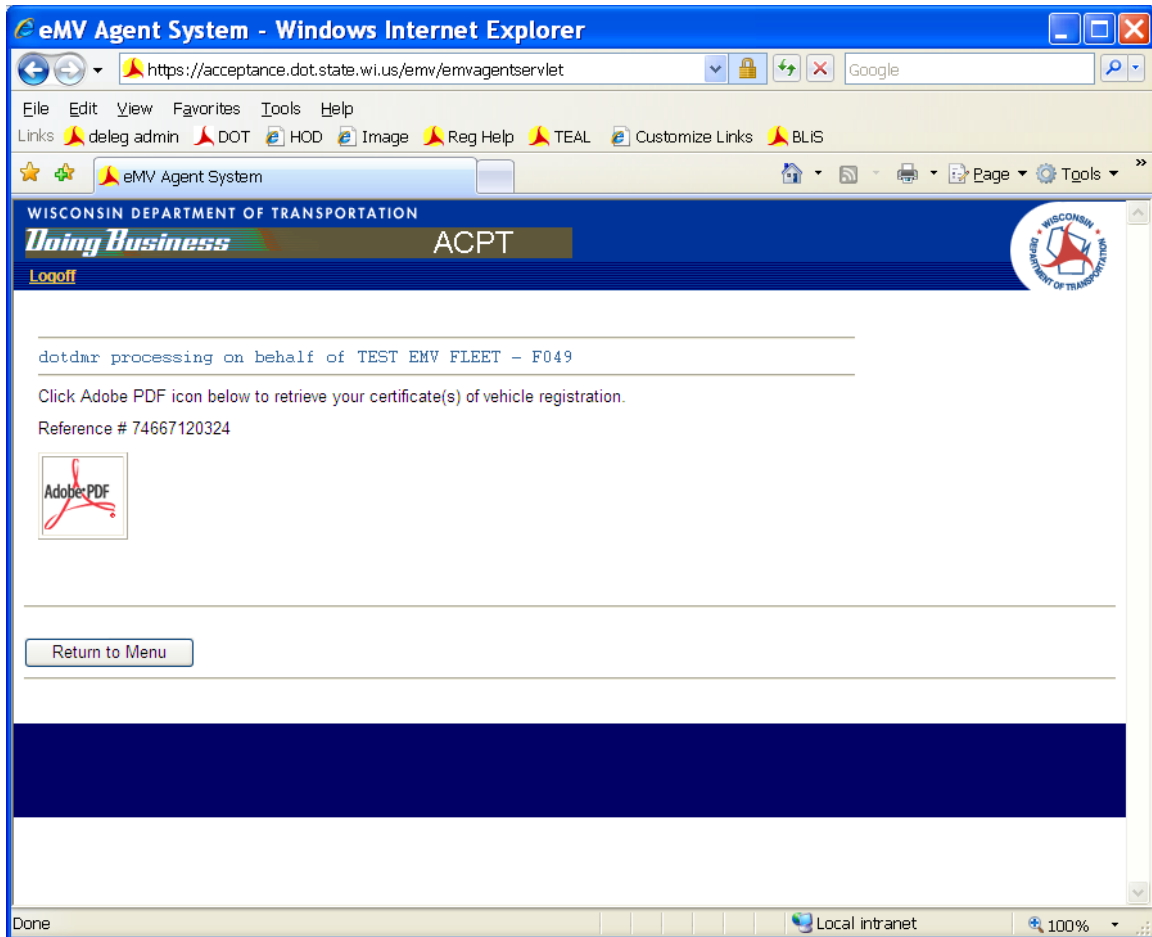
Select fleet that vehicle is associated with. Click **Select Fleet**.  
Or **Cancel** to return to Main Menu.



Select **Reprint Certificate of Registration**.

- The option to reprint a Certificate of Registration will be available for 2 weeks after the vehicle's registration is renewed.

Enter reference number. Click **Next**.



Click on **Adobe PDF**.

- Open Adobe PDF file
- Print Certificate of Registration
- Close Adobe PDF file

Select **Return to Menu**