



Performance Measure Report

Advertised with Holds

Data Through: April Letting (Through the Ad Meeting held in March)

Goal

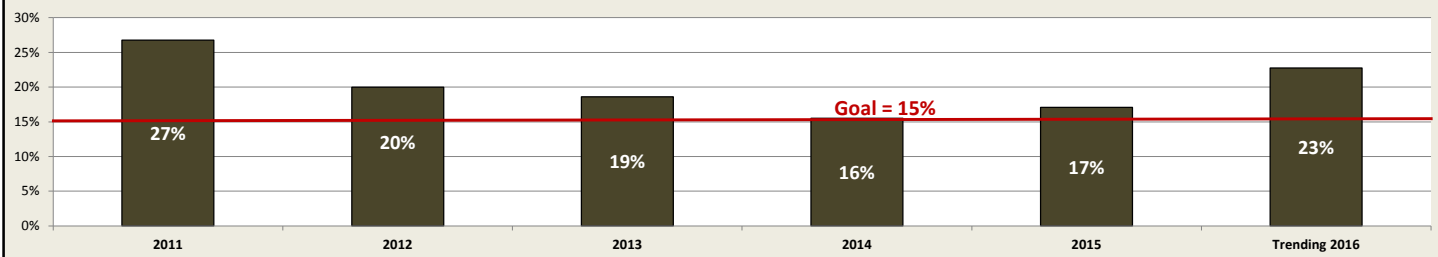
The purpose of **Advertised with Holds** is to minimize the number and significance of holds at the time of advertising. The goal is to deliver accurate, complete plans, specifications and estimates so that holds of the award are not necessary. While holds will always occur, they will be evaluated to identify process improvements to minimize the number and significance of holds that occur.

A goal has been established: No more than 15% of total proposals will have holds at the time of advertising.

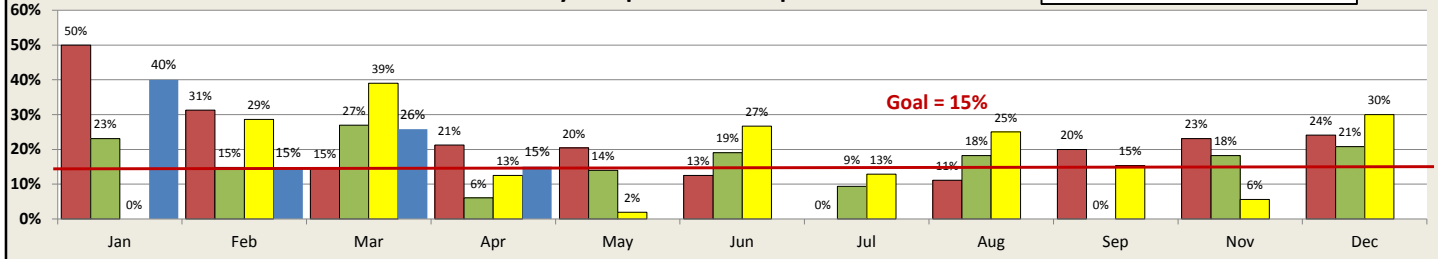
Statewide Summary - State and Local Projects

PS&E Month	Ad Date	Let Month	401	COE	TMP	RE	RR ENG	RR RE	FHWA	UTL	Other	Total Categories with Holds	Proposals with Holds	Proposals without Holds	Total Proposals	Proposals with Holds per Total Proposals
Aug-15	12/8/2015	Jan-16	0	1	1	2	0	0	2	4	0	10	10	15	25	40%
Aug-15	1/5/2016	Feb-16	0	0	0	0	0	0	2	2	0	4	4	23	27	15%
Nov-15	2/2/2016	Mar-16	0	1	0	4	0	0	1	2	0	8	8	23	31	26%
Nov-15	3/8/2016	Apr-16	0	1	0	3	0	0	0	2	0	6	6	34	40	15%
Feb-16	4/5/2016	May-16	0	0	0	0	0	0	0	0	0	0	0	0	0	0%
Feb-16	5/10/2016	Jun-16	0	0	0	0	0	0	0	0	0	0	0	0	0	0%
Feb-16	6/7/2016	Jul-16	0	0	0	0	0	0	0	0	0	0	0	0	0	0%
May-16	7/5/2016	Aug-16	0	0	0	0	0	0	0	0	0	0	0	0	0	0%
May-16	8/9/2016	Sep-16	0	0	0	0	0	0	0	0	0	0	0	0	0	0%
May-16	10/4/2016	Nov-16	0	0	0	0	0	0	0	0	0	0	0	0	0	0%
Aug-16	11/8/2016	Dec-16	0	0	0	0	0	0	0	0	0	0	0	0	0	0%
Cumulative Total			0	3	1	9	0	0	5	10	0	28	28	95	123	23%
Holds per Category to Total Categories with Holds (YTD)			0%	11%	4%	32%	0%	0%	18%	36%	0%					
Holds per Category to Total Proposals with Holds (YTD)			0%	11%	4%	32%	0%	0%	18%	36%	0%					
Holds per Category to Total Proposals (YTD)			0%	2%	1%	7%	0%	0%	4%	8%	0%					

Proposals with Holds to Total Proposals



Monthly Comparison of Proposals with Holds





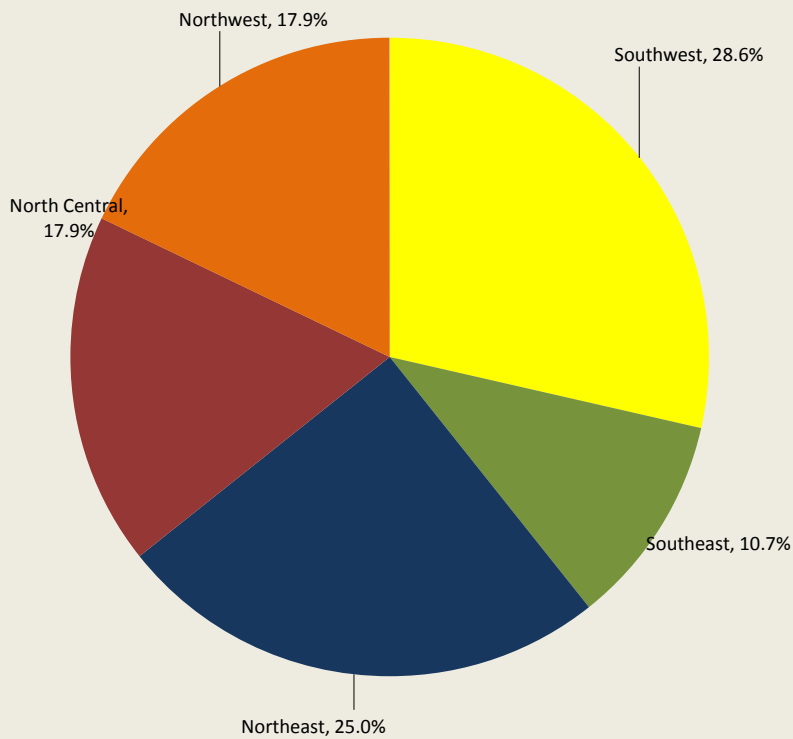
Performance Measure Report

Advertised with Holds

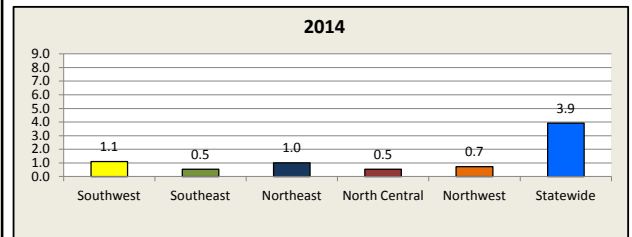
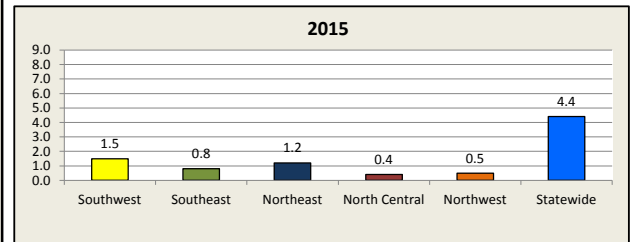
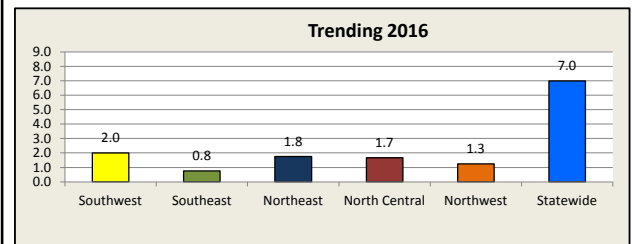
Data Through: April Letting (Through the Ad Meeting held in March)

Regional Summary														
Cumulative Total (Year-to-Date)														
	401	COE	TMP	RE	RR ENG	RR RE	FHWA	UTL	Other	Total Categories with Holds	Proposals with Holds	Proposals without Holds	Total Proposals	Proposals with Holds per Total Proposals
Southwest	0	0	0	0	0	0	3	5	0	8	8	27	35	22.9%
Southeast	0	1	0	0	0	0	1	1	0	3	3	14	17	17.6%
Northeast	0	0	0	4	0	0	0	3	0	7	7	19	26	26.9%
North Central	0	2	1	2	0	0	0	0	0	5	5	14	19	26.3%
Northwest	0	0	0	3	0	0	1	1	0	5	5	21	26	19.2%
Total	0	3	1	9	0	0	5	10	0	28	28	95	123	22.8%

2016 Proposals with Holds (Per Region) to Total Proposals with Holds (Statewide Total)



Average Number of Monthly Holds by Region/Statewide





Performance Measure Report

Advertised with Holds

Data Through: April Letting (Through the Ad Meeting held in March)

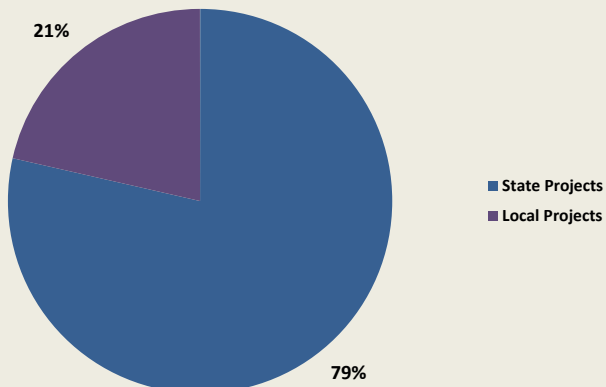
Summary Table- State Projects

PS&E Month	Ad Date	Let Month	401	COE	TMP	RE	RR ENG	RR RE	FHWA	UTL	Other	Total Categories with Holds	Proposals with Holds	Proposals without Holds	Total Proposals	Proposals with Holds per Total Proposals
Aug-15	12/8/2015	Jan-16	0	1	1	1	0	0	2	4	0	9	9	12	21	43%
Aug-15	1/5/2016	Feb-16	0	0	0	0	0	0	2	2	0	4	4	15	19	21%
Nov-15	2/2/2016	Mar-16	0	1	0	1	0	0	1	1	0	4	4	15	19	21%
Nov-15	3/8/2016	Apr-16	0	1	0	2	0	0	0	2	0	5	5	27	32	16%
Feb-16	4/5/2016	May-16	0	0	0	0	0	0	0	0	0	0	0	0	0	0%
Feb-16	5/10/2016	Jun-16	0	0	0	0	0	0	0	0	0	0	0	0	0	0%
Feb-16	6/7/2016	Jul-16	0	0	0	0	0	0	0	0	0	0	0	0	0	0%
May-16	7/5/2016	Aug-16	0	0	0	0	0	0	0	0	0	0	0	0	0	0%
May-16	8/9/2016	Sep-16	0	0	0	0	0	0	0	0	0	0	0	0	0	0%
May-16	10/4/2016	Nov-16	0	0	0	0	0	0	0	0	0	0	0	0	0	0%
Aug-16	11/8/2016	Dec-16	0	0	0	0	0	0	0	0	0	0	0	0	0	0%
Cumulative Total			0	3	1	4	0	0	5	9	0	22	22	69	91	24%
Holds per Category to Total Categories with Holds (YTD)			0%	14%	5%	18%	0%	0%	23%	41%	0%					
Holds per Category to Total Proposals with Holds (YTD)			0%	14%	5%	18%	0%	0%	23%	41%	0%					
Holds per Category to Total Proposals (YTD)			0%	3%	1%	4%	0%	0%	5%	10%	0%					

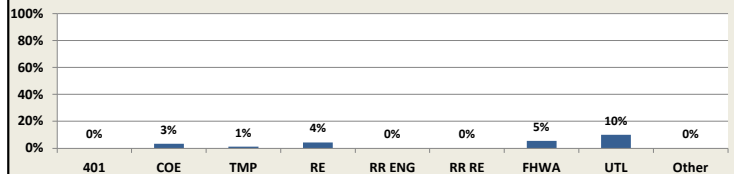
Summary Table - Local Projects

PS&E Month	Ad Date	Let Month	401	COE	TMP	RE	RR ENG	RR RE	FHWA	UTL	Other	Total Categories with Holds	Proposals with Holds	Proposals without Holds	Total Proposals	Proposals with Holds per Total Proposals
Aug-15	12/8/2015	Jan-16	0	0	0	1	0	0	0	0	0	1	1	3	4	25%
Aug-15	1/5/2016	Feb-16	0	0	0	0	0	0	0	0	0	0	0	8	8	0%
Nov-15	2/2/2016	Mar-16	0	0	0	3	0	0	0	1	0	4	4	8	12	33%
Nov-15	3/8/2016	Apr-16	0	0	0	1	0	0	0	0	0	1	1	7	8	13%
Feb-16	4/5/2016	May-16	0	0	0	0	0	0	0	0	0	0	0	0	0	0%
Feb-16	5/10/2016	Jun-16	0	0	0	0	0	0	0	0	0	0	0	0	0	0%
Feb-16	6/7/2016	Jul-16	0	0	0	0	0	0	0	0	0	0	0	0	0	0%
May-16	7/5/2016	Aug-16	0	0	0	0	0	0	0	0	0	0	0	0	0	0%
May-16	8/9/2016	Sep-16	0	0	0	0	0	0	0	0	0	0	0	0	0	0%
May-16	10/4/2016	Nov-16	0	0	0	0	0	0	0	0	0	0	0	0	0	0%
Aug-16	11/8/2016	Dec-16	0	0	0	0	0	0	0	0	0	0	0	0	0	0%
Cumulative Total			0	0	0	5	0	0	0	1	0	6	6	26	32	19%
Holds per Category to Total Categories with Holds (YTD)			0%	0%	0%	83%	0%	0%	0%	17%	0%					
Holds per Category to Total Proposals with Holds (YTD)			0%	0%	0%	83%	0%	0%	0%	17%	0%					
Holds per Category to Total Proposals (YTD)			0%	0%	0%	16%	0%	0%	0%	3%	0%					

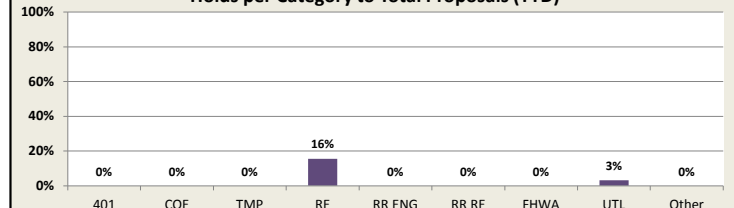
2015 Proposals with Holds (Per Program) to Total Proposals with Holds



State Projects - Holds per Category to Total Proposals (YTD)



Local Projects - Holds per Category to Total Proposals (YTD)





Performance Measure Report

Southwest Region

Advertised with Holds Report

Data Through: April Letting (Through the Ad Meeting held in March)

Southwest Region - State and Local Projects

PS&E Month	Ad Date	Let Month	401	COE	TMP	RE	RR ENG	RR RE	FHWA	UTL	Other	Total Categories with Holds	Proposals with Holds	Proposals without Holds	Total Proposals	Proposals with Holds per Total Proposals
Aug-15	12/8/2015	Jan-16	0	0	0	0	0	0	0	3	0	3	3	6	9	33%
Aug-15	1/5/2016	Feb-16	0	0	0	0	0	0	2	1	0	3	3	7	10	30%
Nov-15	2/2/2016	Mar-16	0	0	0	0	0	0	1	1	0	2	2	9	11	18%
Nov-15	3/8/2016	Apr-16	0	0	0	0	0	0	0	0	0	0	0	5	5	0%
Feb-16	4/5/2016	May-16	0	0	0	0	0	0	0	0	0	0	0	0	0	0%
Feb-16	5/10/2016	Jun-16	0	0	0	0	0	0	0	0	0	0	0	0	0	0%
Feb-16	6/7/2016	Jul-16	0	0	0	0	0	0	0	0	0	0	0	0	0	0%
May-16	7/5/2016	Aug-16	0	0	0	0	0	0	0	0	0	0	0	0	0	0%
May-16	8/9/2016	Sep-16	0	0	0	0	0	0	0	0	0	0	0	0	0	0%
May-16	10/4/2016	Nov-16	0	0	0	0	0	0	0	0	0	0	0	0	0	0%
Aug-16	11/8/2016	Dec-16	0	0	0	0	0	0	0	0	0	0	0	0	0	0%
Cumulative Total			0	0	0	0	0	0	3	5	0	8	8	27	35	23%
Holds per Category to Total Categories with Holds (YTD)			0%	0%	0%	0%	0%	0%	38%	63%	0%					
Holds per Category to Total Proposals with Holds (YTD)			0%	0%	0%	0%	0%	0%	38%	63%	0%					
Holds per Category to Total Proposals (YTD)			0%	0%	0%	0%	0%	0%	9%	14%	0%					
Holds per Category to Total Proposals (YTD)			0%	0%	0%	0%	0%	0%	9%	14%	0%					

Southwest Region - State Projects

PS&E Month	Ad Date	Let Month	401	COE	TMP	RE	RR ENG	RR RE	FHWA	UTL	Other	Total Categories with Holds	Proposals with Holds	Proposals without Holds	Total Proposals	Proposals with Holds per Total Proposals
Aug-15	12/8/2015	Jan-16	0	0	0	0	0	0	0	3	0	3	3	4	7	43%
Aug-15	1/5/2016	Feb-16	0	0	0	0	0	0	2	1	0	3	3	4	7	43%
Nov-15	2/2/2016	Mar-16	0	0	0	0	0	0	1	0	0	1	1	7	8	13%
Nov-15	3/8/2016	Apr-16	0	0	0	0	0	0	0	0	0	0	0	3	3	0%
Feb-16	4/5/2016	May-16	0	0	0	0	0	0	0	0	0	0	0	0	0	0%
Feb-16	5/10/2016	Jun-16	0	0	0	0	0	0	0	0	0	0	0	0	0	0%
Feb-16	6/7/2016	Jul-16	0	0	0	0	0	0	0	0	0	0	0	0	0	0%
May-16	7/5/2016	Aug-16	0	0	0	0	0	0	0	0	0	0	0	0	0	0%
May-16	8/9/2016	Sep-16	0	0	0	0	0	0	0	0	0	0	0	0	0	0%
May-16	10/4/2016	Nov-16	0	0	0	0	0	0	0	0	0	0	0	0	0	0%
Aug-16	11/8/2016	Dec-16	0	0	0	0	0	0	0	0	0	0	0	0	0	0%
Cumulative Total			0	0	0	0	0	0	3	4	0	7	7	18	25	28%
Holds per Category to Total Categories with Holds (YTD)			0%	0%	0%	0%	0%	0%	43%	57%	0%					
Holds per Category to Total Proposals with Holds (YTD)			0%	0%	0%	0%	0%	0%	43%	57%	0%					
Holds per Category to Total Proposals (YTD)			0%	0%	0%	0%	0%	0%	12%	16%	0%					
Holds per Category to Total Proposals (YTD)			0%	0%	0%	0%	0%	0%	12%	16%	0%					

Southwest Region - Local Projects

PS&E Month	Ad Date	Let Month	401	COE	TMP	RE	RR ENG	RR RE	FHWA	UTL	Other	Total Categories with Holds	Proposals with Holds	Proposals without Holds	Total Proposals	Proposals with Holds per Total Proposals
Aug-15	12/8/2015	Jan-16	0	0	0	0	0	0	0	0	0	0	0	2	2	0%
Aug-15	1/5/2016	Feb-16	0	0	0	0	0	0	0	0	0	0	0	3	3	0%
Nov-15	2/2/2016	Mar-16	0	0	0	0	0	0	0	1	0	1	1	2	3	33%
Nov-15	3/8/2016	Apr-16	0	0	0	0	0	0	0	0	0	0	0	2	2	0%
Feb-16	4/5/2016	May-16	0	0	0	0	0	0	0	0	0	0	0	0	0	0%
Feb-16	5/10/2016	Jun-16	0	0	0	0	0	0	0	0	0	0	0	0	0	0%
Feb-16	6/7/2016	Jul-16	0	0	0	0	0	0	0	0	0	0	0	0	0	0%
May-16	7/5/2016	Aug-16	0	0	0	0	0	0	0	0	0	0	0	0	0	0%
May-16	8/9/2016	Sep-16	0	0	0	0	0	0	0	0	0	0	0	0	0	0%
May-16	10/4/2016	Nov-16	0	0	0	0	0	0	0	0	0	0	0	0	0	0%
Aug-16	11/8/2016	Dec-16	0	0	0	0	0	0	0	0	0	0	0	0	0	0%
Cumulative Total			0	0	0	0	0	0	0	1	0	1	1	9	10	10%
Holds per Category to Total Categories with Holds (YTD)			0%	0%	0%	0%	0%	0%	0%	100%	0%					
Holds per Category to Total Proposals with Holds (YTD)			0%	0%	0%	0%	0%	0%	0%	100%	0%					
Holds per Category to Total Proposals (YTD)			0%	0%	0%	0%	0%	0%	0%	10%	0%					
Holds per Category to Total Proposals (YTD)			0%	0%	0%	0%	0%	0%	0%	10%	0%					



Performance Measure Report

Southeast Region**Advertised with Holds Report**

Data Through: April Letting (Through the Ad Meeting held in March)

Southeast Region - State and Local Projects

PS&E Month	Ad Date	Let Month	401	COE	TMP	RE	RR ENG	RR RE	FHWA	UTL	Other	Total Categories with Holds	Proposals with Holds	Proposals without Holds	Total Proposals	Proposals with Holds per Total Proposals
Aug-15	12/8/2015	Jan-16	0	0	0	0	0	0	1	0	0	1	1	1	2	50%
Aug-15	1/5/2016	Feb-16	0	0	0	0	0	0	0	0	0	0	0	3	3	0%
Nov-15	2/2/2016	Mar-16	0	0	0	0	0	0	0	0	0	0	0	4	4	0%
Nov-15	3/8/2016	Apr-16	0	1	0	0	0	0	0	1	0	2	2	6	8	25%
Feb-16	4/5/2016	May-16	0	0	0	0	0	0	0	0	0	0	0	0	0	0%
Feb-16	5/10/2016	Jun-16	0	0	0	0	0	0	0	0	0	0	0	0	0	0%
Feb-16	6/7/2016	Jul-16	0	0	0	0	0	0	0	0	0	0	0	0	0	0%
May-16	7/5/2016	Aug-16	0	0	0	0	0	0	0	0	0	0	0	0	0	0%
May-16	8/9/2016	Sep-16	0	0	0	0	0	0	0	0	0	0	0	0	0	0%
May-16	10/4/2016	Nov-16	0	0	0	0	0	0	0	0	0	0	0	0	0	0%
Aug-16	11/8/2016	Dec-16	0	0	0	0	0	0	0	0	0	0	0	0	0	0%
Cumulative Total			0	1	0	0	0	0	1	1	0	3	3	14	17	18%
Holds per Category to Total Categories with Holds (YTD)			0%	33%	0%	0%	0%	0%	33%	33%	0%					
Holds per Category to Total Proposals with Holds (YTD)			0%	33%	0%	0%	0%	0%	33%	33%	0%					
Holds per Category to Total Proposals (YTD)			0%	6%	0%	0%	0%	0%	6%	6%	0%					

Southeast Region - State Projects

PS&E Month	Ad Date	Let Month	401	COE	TMP	RE	RR ENG	RR RE	FHWA	UTL	Other	Total Categories with Holds	Proposals with Holds	Proposals without Holds	Total Proposals	Proposals with Holds per Total Proposals
Aug-15	12/8/2015	Jan-16	0	0	0	0	0	0	1	0	0	1	1	1	2	50%
Aug-15	1/5/2016	Feb-16	0	0	0	0	0	0	0	0	0	0	0	2	2	0%
Nov-15	2/2/2016	Mar-16	0	0	0	0	0	0	0	0	0	0	0	1	1	0%
Nov-15	3/8/2016	Apr-16	0	1	0	0	0	0	0	1	0	2	2	4	6	33%
Feb-16	4/5/2016	May-16	0	0	0	0	0	0	0	0	0	0	0	0	0	0%
Feb-16	5/10/2016	Jun-16	0	0	0	0	0	0	0	0	0	0	0	0	0	0%
Feb-16	6/7/2016	Jul-16	0	0	0	0	0	0	0	0	0	0	0	0	0	0%
May-16	7/5/2016	Aug-16	0	0	0	0	0	0	0	0	0	0	0	0	0	0%
May-16	8/9/2016	Sep-16	0	0	0	0	0	0	0	0	0	0	0	0	0	0%
May-16	10/4/2016	Nov-16	0	0	0	0	0	0	0	0	0	0	0	0	0	0%
Aug-16	11/8/2016	Dec-16	0	0	0	0	0	0	0	0	0	0	0	0	0	0%
Cumulative Total			0	1	0	0	0	0	1	1	0	3	3	8	11	27%
Holds per Category to Total Categories with Holds (YTD)			0%	33%	0%	0%	0%	0%	33%	33%	0%					
Holds per Category to Total Proposals with Holds (YTD)			0%	33%	0%	0%	0%	0%	33%	33%	0%					
Holds per Category to Total Proposals (YTD)			0%	9%	0%	0%	0%	0%	9%	9%	0%					

Southeast Region - Local Projects

PS&E Month	Ad Date	Let Month	401	COE	TMP	RE	RR ENG	RR RE	FHWA	UTL	Other	Total Categories with Holds	Proposals with Holds	Proposals without Holds	Total Proposals	Proposals with Holds per Total Proposals
Aug-15	12/8/2015	Jan-16	0	0	0	0	0	0	0	0	0	0	0	0	0	0%
Aug-15	1/5/2016	Feb-16	0	0	0	0	0	0	0	0	0	0	0	1	1	0%
Nov-15	2/2/2016	Mar-16	0	0	0	0	0	0	0	0	0	0	0	3	3	0%
Nov-15	3/8/2016	Apr-16	0	0	0	0	0	0	0	0	0	0	0	2	2	0%
Feb-16	4/5/2016	May-16	0	0	0	0	0	0	0	0	0	0	0	0	0	0%
Feb-16	5/10/2016	Jun-16	0	0	0	0	0	0	0	0	0	0	0	0	0	0%
Feb-16	6/7/2016	Jul-16	0	0	0	0	0	0	0	0	0	0	0	0	0	0%
May-16	7/5/2016	Aug-16	0	0	0	0	0	0	0	0	0	0	0	0	0	0%
May-16	8/9/2016	Sep-16	0	0	0	0	0	0	0	0	0	0	0	0	0	0%
May-16	10/4/2016	Nov-16	0	0	0	0	0	0	0	0	0	0	0	0	0	0%
Aug-16	11/8/2016	Dec-16	0	0	0	0	0	0	0	0	0	0	0	0	0	0%
Cumulative Total			0	0	0	0	0	0	0	0	0	0	0	6	6	0%
Holds per Category to Total Categories with Holds (YTD)			#DIV/0!	#DIV/0!	#DIV/0!	#DIV/0!	#DIV/0!	#DIV/0!	#DIV/0!	#DIV/0!	#DIV/0!					
Holds per Category to Total Proposals with Holds (YTD)			#DIV/0!	#DIV/0!	#DIV/0!	#DIV/0!	#DIV/0!	#DIV/0!	#DIV/0!	#DIV/0!						
Holds per Category to Total Proposals (YTD)			0%	0%	0%	0%	0%	0%	0%	0%						

Note for March Let Month: Proposal #20160308010 was deferred due to Utility Coordination Issues. This proposal is not included in the March information. It will be reported in a future month.

Note for March Let Month: Proposal 20160308015 has two project ids associated (one state and one local). For reporting purposes the proposal was recorded as a local project only.



Performance Measure Report

Northeast Region**Advertised with Holds Report**

Data Through: April Letting (Through the Ad Meeting held in March)

Northeast Region - State and Local Projects

PS&E Month	Ad Date	Let Month	401	COE	TMP	RE	RR ENG	RR RE	FHWA	UTL	Other	Total Categories with Holds	Proposals with Holds	Proposals without Holds	Total Proposals	Proposals with Holds per Total Proposals
Aug-15	12/8/2015	Jan-16	0	0	0	0	0	0	0	1	0	1	1	2	3	33%
Aug-15	1/5/2016	Feb-16	0	0	0	0	0	0	0	1	0	1	1	3	4	25%
Nov-15	2/2/2016	Mar-16	0	0	0	2	0	0	0	0	0	2	2	5	7	29%
Nov-15	3/8/2016	Apr-16	0	0	0	2	0	0	0	1	0	3	3	9	12	25%
Feb-16	4/5/2016	May-16	0	0	0	0	0	0	0	0	0	0	0	0	0	0%
Feb-16	5/10/2016	Jun-16	0	0	0	0	0	0	0	0	0	0	0	0	0	0%
Feb-16	6/7/2016	Jul-16	0	0	0	0	0	0	0	0	0	0	0	0	0	0%
May-16	7/5/2016	Aug-16	0	0	0	0	0	0	0	0	0	0	0	0	0	0%
May-16	8/9/2016	Sep-16	0	0	0	0	0	0	0	0	0	0	0	0	0	0%
May-16	10/4/2016	Nov-16	0	0	0	0	0	0	0	0	0	0	0	0	0	0%
Aug-16	11/8/2016	Dec-16	0	0	0	0	0	0	0	0	0	0	0	0	0	0%
Cumulative Total			0	0	0	4	0	0	0	3	0	7	7	19	26	27%
Holds per Category to Total Categories with Holds (YTD)			0%	0%	0%	57%	0%	0%	0%	43%	0%					
Holds per Category to Total Proposals with Holds (YTD)			0%	0%	0%	57%	0%	0%	0%	43%	0%					
Holds per Category to Total Proposals (YTD)			0%	0%	0%	15%	0%	0%	0%	12%	0%					

Northeast Region - State Projects

PS&E Month	Ad Date	Let Month	401	COE	TMP	RE	RR ENG	RR RE	FHWA	UTL	Other	Total Categories with Holds	Proposals with Holds	Proposals without Holds	Total Proposals	Proposals with Holds per Total Proposals
Aug-15	12/8/2015	Jan-16	0	0	0	0	0	0	0	1	0	1	1	2	3	33%
Aug-15	1/5/2016	Feb-16	0	0	0	0	0	0	0	1	0	1	1	3	4	25%
Nov-15	2/2/2016	Mar-16	0	0	0	0	0	0	0	0	0	0	0	3	3	0%
Nov-15	3/8/2016	Apr-16	0	0	0	1	0	0	0	1	0	2	2	9	11	18%
Feb-16	4/5/2016	May-16	0	0	0	0	0	0	0	0	0	0	0	0	0	0%
Feb-16	5/10/2016	Jun-16	0	0	0	0	0	0	0	0	0	0	0	0	0	0%
Feb-16	6/7/2016	Jul-16	0	0	0	0	0	0	0	0	0	0	0	0	0	0%
May-16	7/5/2016	Aug-16	0	0	0	0	0	0	0	0	0	0	0	0	0	0%
May-16	8/9/2016	Sep-16	0	0	0	0	0	0	0	0	0	0	0	0	0	0%
May-16	10/4/2016	Nov-16	0	0	0	0	0	0	0	0	0	0	0	0	0	0%
Aug-16	11/8/2016	Dec-16	0	0	0	0	0	0	0	0	0	0	0	0	0	0%
Cumulative Total			0	0	0	1	0	0	0	3	0	4	4	17	21	19%
Holds per Category to Total Categories with Holds (YTD)			0%	0%	0%	25%	0%	0%	0%	75%	0%					
Holds per Category to Total Proposals with Holds (YTD)			0%	0%	0%	25%	0%	0%	0%	75%	0%					
Holds per Category to Total Proposals (YTD)			0%	0%	0%	5%	0%	0%	0%	14%	0%					

Northeast Region - Local Projects

PS&E Month	Ad Date	Let Month	401	COE	TMP	RE	RR ENG	RR RE	FHWA	UTL	Other	Total Categories with Holds	Proposals with Holds	Proposals without Holds	Total Proposals	Proposals with Holds per Total Proposals
Aug-15	12/8/2015	Jan-16	0	0	0	0	0	0	0	0	0	0	0	0	0	0%
Aug-15	1/5/2016	Feb-16	0	0	0	0	0	0	0	0	0	0	0	0	0	0%
Nov-15	2/2/2016	Mar-16	0	0	0	2	0	0	0	0	0	2	2	2	4	50%
Nov-15	3/8/2016	Apr-16	0	0	0	1	0	0	0	0	0	1	1	0	1	100%
Feb-16	4/5/2016	May-16	0	0	0	0	0	0	0	0	0	0	0	0	0	0%
Feb-16	5/10/2016	Jun-16	0	0	0	0	0	0	0	0	0	0	0	0	0	0%
Feb-16	6/7/2016	Jul-16	0	0	0	0	0	0	0	0	0	0	0	0	0	0%
May-16	7/5/2016	Aug-16	0	0	0	0	0	0	0	0	0	0	0	0	0	0%
May-16	8/9/2016	Sep-16	0	0	0	0	0	0	0	0	0	0	0	0	0	0%
May-16	10/4/2016	Nov-16	0	0	0	0	0	0	0	0	0	0	0	0	0	0%
Aug-16	11/8/2016	Dec-16	0	0	0	0	0	0	0	0	0	0	0	0	0	0%
Cumulative Total			0	0	0	3	0	0	0	0	0	3	3	2	5	60%
Holds per Category to Total Categories with Holds (YTD)			0%	0%	0%	100%	0%	0%	0%	0%	0%					
Holds per Category to Total Proposals with Holds (YTD)			0%	0%	0%	100%	0%	0%	0%	0%	0%					
Holds per Category to Total Proposals (YTD)			0%	0%	0%	60%	0%	0%	0%	0%	0%					

Note for April Let Month: Proposal 20160412015 has two project ids associated (one state and one local). For reporting purposes the proposal and Hold (UTL) were recorded under the state project only.



Performance Measure Report North Central Region

Advertised with Holds Report

Data Through: April Letting (Through the Ad Meeting held in March)

North Central Region - State and Local Projects

PS&E Month	Ad Date	Let Month	401	COE	TMP	RE	RR ENG	RR RE	FHWA	UTL	Other	Total Categories with Holds	Proposals with Holds	Proposals without Holds	Total Proposals	Proposals with Holds per Total Proposals
Aug-15	12/8/2015	Jan-16	0	1	1	0	0	0	0	0	0	2	2	2	4	50%
Aug-15	1/5/2016	Feb-16	0	0	0	0	0	0	0	0	0	0	0	2	2	0%
Nov-15	2/2/2016	Mar-16	0	1	0	1	0	0	0	0	0	2	2	2	4	50%
Nov-15	3/8/2016	Apr-16	0	0	0	1	0	0	0	0	0	1	1	8	9	11%
Feb-16	4/5/2016	May-16	0	0	0	0	0	0	0	0	0	0	0	0	0	0%
Feb-16	5/10/2016	Jun-16	0	0	0	0	0	0	0	0	0	0	0	0	0	0%
Feb-16	6/7/2016	Jul-16	0	0	0	0	0	0	0	0	0	0	0	0	0	0%
May-16	7/5/2016	Aug-16	0	0	0	0	0	0	0	0	0	0	0	0	0	0%
May-16	8/9/2016	Sep-16	0	0	0	0	0	0	0	0	0	0	0	0	0	0%
May-16	10/4/2016	Nov-16	0	0	0	0	0	0	0	0	0	0	0	0	0	0%
Aug-16	11/8/2016	Dec-16	0	0	0	0	0	0	0	0	0	0	0	0	0	0%
Cumulative Total			0	2	1	2	0	0	0	0	0	5	5	14	19	26%
Holds per Category to Total Categories with Holds (YTD)			0%	40%	20%	40%	0%	0%	0%	0%	0%					
Holds per Category to Total Proposals with Holds (YTD)			0%	40%	20%	40%	0%	0%	0%	0%	0%					
Holds per Category to Total Proposals (YTD)			0%	11%	5%	11%	0%	0%	0%	0%	0%					

North Central Region - State Projects

PS&E Month	Ad Date	Let Month	401	COE	TMP	RE	RR ENG	RR RE	FHWA	UTL	Other	Total Categories with Holds	Proposals with Holds	Proposals without Holds	Total Proposals	Proposals with Holds per Total Proposals
Aug-15	12/8/2015	Jan-16	0	1	1	0	0	0	0	0	0	2	2	2	4	50%
Aug-15	1/5/2016	Feb-16	0	0	0	0	0	0	0	0	0	0	0	0	0	0%
Nov-15	2/2/2016	Mar-16	0	1	0	1	0	0	0	0	0	2	2	2	4	50%
Nov-15	3/8/2016	Apr-16	0	0	0	1	0	0	0	0	0	1	1	8	9	11%
Feb-16	4/5/2016	May-16	0	0	0	0	0	0	0	0	0	0	0	0	0	0%
Feb-16	5/10/2016	Jun-16	0	0	0	0	0	0	0	0	0	0	0	0	0	0%
Feb-16	6/7/2016	Jul-16	0	0	0	0	0	0	0	0	0	0	0	0	0	0%
May-16	7/5/2016	Aug-16	0	0	0	0	0	0	0	0	0	0	0	0	0	0%
May-16	8/9/2016	Sep-16	0	0	0	0	0	0	0	0	0	0	0	0	0	0%
May-16	10/4/2016	Nov-16	0	0	0	0	0	0	0	0	0	0	0	0	0	0%
Aug-16	11/8/2016	Dec-16	0	0	0	0	0	0	0	0	0	0	0	0	0	0%
Cumulative Total			0	2	1	2	0	0	0	0	0	5	5	12	17	29%
Holds per Category to Total Categories with Holds (YTD)			0%	40%	20%	40%	0%	0%	0%	0%	0%					
Holds per Category to Total Proposals with Holds (YTD)			0%	40%	20%	40%	0%	0%	0%	0%	0%					
Holds per Category to Total Proposals (YTD)			0%	12%	6%	12%	0%	0%	0%	0%	0%					

North Central Region - Local Projects

PS&E Month	Ad Date	Let Month	401	COE	TMP	RE	RR ENG	RR RE	FHWA	UTL	Other	Total Categories with Holds	Proposals with Holds	Proposals without Holds	Total Proposals	Proposals with Holds per Total Proposals
Aug-15	12/8/2015	Jan-16	0	0	0	0	0	0	0	0	0	0	0	0	0	0%
Aug-15	1/5/2016	Feb-16	0	0	0	0	0	0	0	0	0	0	0	2	2	0%
Nov-15	2/2/2016	Mar-16	0	0	0	0	0	0	0	0	0	0	0	0	0	0%
Nov-15	3/8/2016	Apr-16	0	0	0	0	0	0	0	0	0	0	0	0	0	0%
Feb-16	4/5/2016	May-16	0	0	0	0	0	0	0	0	0	0	0	0	0	0%
Feb-16	5/10/2016	Jun-16	0	0	0	0	0	0	0	0	0	0	0	0	0	0%
Feb-16	6/7/2016	Jul-16	0	0	0	0	0	0	0	0	0	0	0	0	0	0%
May-16	7/5/2016	Aug-16	0	0	0	0	0	0	0	0	0	0	0	0	0	0%
May-16	8/9/2016	Sep-16	0	0	0	0	0	0	0	0	0	0	0	0	0	0%
May-16	10/4/2016	Nov-16	0	0	0	0	0	0	0	0	0	0	0	0	0	0%
Aug-16	11/8/2016	Dec-16	0	0	0	0	0	0	0	0	0	0	0	0	0	0%
Cumulative Total			0	0	0	0	0	0	0	0	0	0	0	2	2	0%
Holds per Category to Total Categories with Holds (YTD)			#DIV/0!	#DIV/0!	#DIV/0!	#DIV/0!	#DIV/0!	#DIV/0!	#DIV/0!	#DIV/0!	#DIV/0!					
Holds per Category to Total Proposals with Holds (YTD)			#DIV/0!	#DIV/0!	#DIV/0!	#DIV/0!	#DIV/0!	#DIV/0!	#DIV/0!	#DIV/0!	#DIV/0!					
Holds per Category to Total Proposals (YTD)			0%	0%	0%	0%	0%	0%	0%	0%	0%					



Performance Measure Report

Northwest Region

Advertised with Holds Report

Data Through: April Letting (Through the Ad Meeting held in March)

Northwest Region - State and Local Projects

PS&E Month	Ad Date	Let Month	401	COE	TMP	RE	RR ENG	RR RE	FHWA	UTL	Other	Total Categories with Holds	Proposals with Holds	Proposals without Holds	Total Proposals	Proposals with Holds per Total Proposals
Aug-15	12/8/2015	Jan-16	0	0	0	2	0	0	1	0	0	3	3	4	7	43%
Aug-15	1/5/2016	Feb-16	0	0	0	0	0	0	0	0	0	0	0	8	8	0%
Nov-15	2/2/2016	Mar-16	0	0	0	1	0	0	0	1	0	2	2	3	5	40%
Nov-15	3/8/2016	Apr-16	0	0	0	0	0	0	0	0	0	0	0	6	6	0%
Feb-16	4/5/2016	May-16	0	0	0	0	0	0	0	0	0	0	0	0	0	0%
Feb-16	5/10/2016	Jun-16	0	0	0	0	0	0	0	0	0	0	0	0	0	0%
Feb-16	6/7/2016	Jul-16	0	0	0	0	0	0	0	0	0	0	0	0	0	0%
May-16	7/5/2016	Aug-16	0	0	0	0	0	0	0	0	0	0	0	0	0	0%
May-16	8/9/2016	Sep-16	0	0	0	0	0	0	0	0	0	0	0	0	0	0%
May-16	10/4/2016	Nov-16	0	0	0	0	0	0	0	0	0	0	0	0	0	0%
Aug-16	11/8/2016	Dec-16	0	0	0	0	0	0	0	0	0	0	0	0	0	0%
Cumulative Total			0	0	0	3	0	0	1	1	0	5	5	21	26	19%
Holds per Category to Total Categories with Holds (YTD)			0%	0%	0%	60%	0%	0%	20%	20%	0%					
Holds per Category to Total Proposals with Holds (YTD)			0%	0%	0%	60%	0%	0%	20%	20%	0%					
Holds per Category to Total Proposals (YTD)			0%	0%	0%	12%	0%	0%	4%	4%	0%					

Northwest Region - State Projects

PS&E Month	Ad Date	Let Month	401	COE	TMP	RE	RR ENG	RR RE	FHWA	UTL	Other	Total Categories with Holds	Proposals with Holds	Proposals without Holds	Total Proposals	Proposals with Holds per Total Proposals
Aug-15	12/8/2015	Jan-16	0	0	0	1	0	0	1	0	0	2	2	3	5	40%
Aug-15	1/5/2016	Feb-16	0	0	0	0	0	0	0	0	0	0	0	6	6	0%
Nov-15	2/2/2016	Mar-16	0	0	0	0	0	0	0	1	0	1	1	2	3	33%
Nov-15	3/8/2016	Apr-16	0	0	0	0	0	0	0	0	0	0	0	3	3	0%
Feb-16	4/5/2016	May-16	0	0	0	0	0	0	0	0	0	0	0	0	0	0%
Feb-16	5/10/2016	Jun-16	0	0	0	0	0	0	0	0	0	0	0	0	0	0%
Feb-16	6/7/2016	Jul-16	0	0	0	0	0	0	0	0	0	0	0	0	0	0%
May-16	7/5/2016	Aug-16	0	0	0	0	0	0	0	0	0	0	0	0	0	0%
May-16	8/9/2016	Sep-16	0	0	0	0	0	0	0	0	0	0	0	0	0	0%
May-16	10/4/2016	Nov-16	0	0	0	0	0	0	0	0	0	0	0	0	0	0%
Aug-16	11/8/2016	Dec-16	0	0	0	0	0	0	0	0	0	0	0	0	0	0%
Cumulative Total			0	0	0	1	0	0	1	1	0	3	3	14	17	18%
Holds per Category to Total Categories with Holds (YTD)			0%	0%	0%	33%	0%	0%	33%	33%	0%					
Holds per Category to Total Proposals with Holds (YTD)			0%	0%	0%	33%	0%	0%	33%	33%	0%					
Holds per Category to Total Proposals (YTD)			0%	0%	0%	6%	0%	0%	6%	6%	0%					

Northwest Region

PS&E Month	Ad Date	Let Month	401	COE	TMP	RE	RR ENG	RR RE	FHWA	UTL	Other	Total Categories with Holds	Proposals with Holds	Proposals without Holds	Total Proposals	Proposals with Holds per Total Proposals
Aug-15	12/8/2015	Jan-16	0	0	0	1	0	0	0	0	0	1	1	1	2	50%
Aug-15	1/5/2016	Feb-16	0	0	0	0	0	0	0	0	0	0	0	2	2	0%
Nov-15	2/2/2016	Mar-16	0	0	0	1	0	0	0	0	0	1	1	1	2	50%
Nov-15	3/8/2016	Apr-16	0	0	0	0	0	0	0	0	0	0	0	3	3	0%
Feb-16	4/5/2016	May-16	0	0	0	0	0	0	0	0	0	0	0	0	0	0%
Feb-16	5/10/2016	Jun-16	0	0	0	0	0	0	0	0	0	0	0	0	0	0%
Feb-16	6/7/2016	Jul-16	0	0	0	0	0	0	0	0	0	0	0	0	0	0%
May-16	7/5/2016	Aug-16	0	0	0	0	0	0	0	0	0	0	0	0	0	0%
May-16	8/9/2016	Sep-16	0	0	0	0	0	0	0	0	0	0	0	0	0	0%
May-16	10/4/2016	Nov-16	0	0	0	0	0	0	0	0	0	0	0	0	0	0%
Aug-16	11/8/2016	Dec-16	0	0	0	0	0	0	0	0	0	0	0	0	0	0%
Cumulative Total			0	0	0	2	0	0	0	0	0	2	2	7	9	22%
Holds per Category to Total Categories with Holds (YTD)			0%	0%	0%	100%	0%	0%	0%	0%	0%					
Holds per Category to Total Proposals with Holds (YTD)			0%	0%	0%	100%	0%	0%	0%	0%	0%					
Holds per Category to Total Proposals (YTD)			0%	0%	0%	12%	0%	0%	0%	0%	0%					

Note for March Let Month: Proposal 20160308029 has two project ids associated (one state and one local). For reporting purposes the proposal was recorded as a local project only.