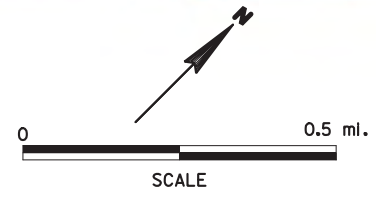


LEGEND					
	POTENTIAL INTERCHANGE ALLOWED		PROPOSED ROADWAY		ACCESS REMOVAL TYPE
	POTENTIAL INTERCHANGE NOT ALLOWED		PROPOSED CUL-DE-SAC		Residential
	EXISTING INTERCHANGE		PROPOSED STRUCTURE		Agricultural
	EXISTING GRADE SEPARATION		OBLITERATE ROADWAY		Commercial
	APPROXIMATE WETLAND BOUNDARY		POTENTIAL RELOCATION		Utility
	HISTORICAL BUILDING		APPROXIMATE WETLAND INTER-BOUNDARY DIVISION & TYPE		Cemetery

US 151 FREEWAY STUDY PRELIMINARY CONCEPTS - ALTERNATIVE 3C -

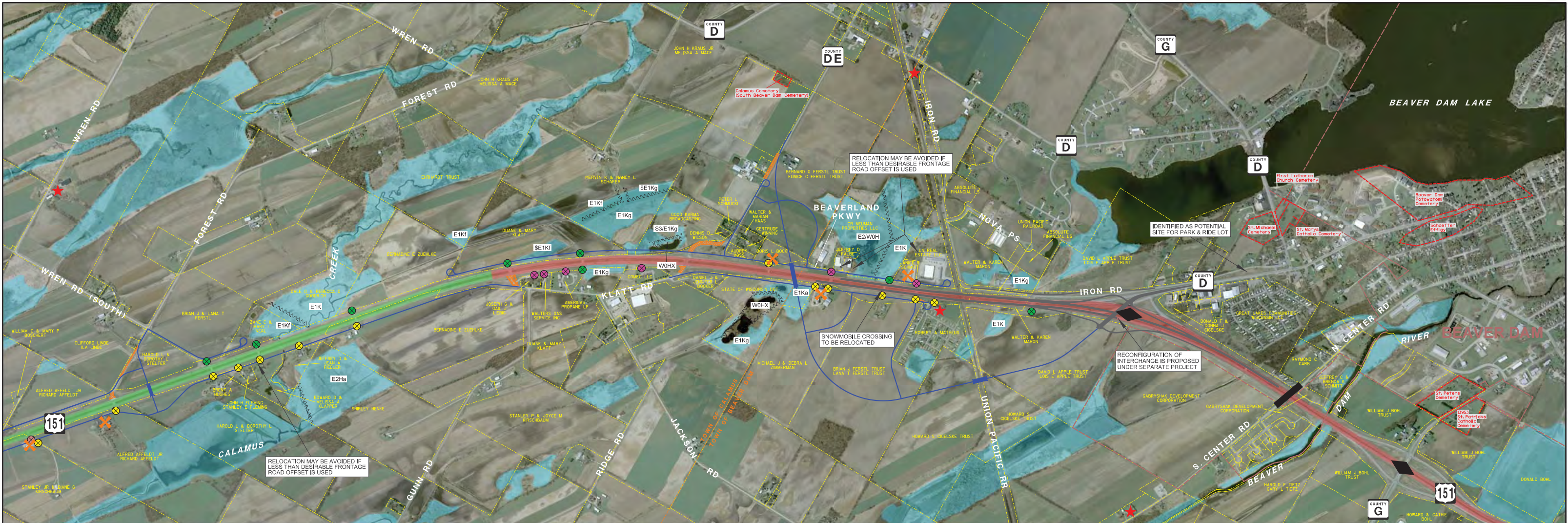
PROPOSED INTERCHANGE AT CTH S PROPOSED OVERPASS AT SALEM ROAD, FOREST ROAD, CTH DE



PROJECT ID: 1110-00-09
COLUMBUS TO WAUPUN
DODGE COUNTY



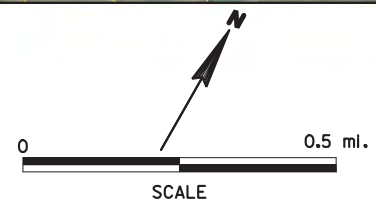
AVRES
ASSOCIATES



LEGEND			
	POTENTIAL INTERCHANGE ALLOWED		ACCESS REMOVAL
	POTENTIAL INTERCHANGE NOT ALLOWED		TYPE Residential
	EXISTING INTERCHANGE		Agricultural
	EXISTING GRADE SEPARATION		Commercial
	APPROXIMATE WETLAND BOUNDARY		Utility
	PROPOSED ROADWAY		Cemetery
	PROPOSED CUL-DE-SAC		APPROXIMATE WETLAND INTER-BOUNDARY DIVISION & TYPE
	PROPOSED STRUCTURE		
	OBLITERATE ROADWAY		
	POTENTIAL RELOCATION		
	HISTORICAL BUILDING		

US 151 FREEWAY STUDY PRELIMINARY CONCEPTS - ALTERNATIVE 3C -

**PROPOSED INTERCHANGE AT CTH S
PROPOSED OVERPASS AT SALEM ROAD, FOREST ROAD, CTH DE**



PROJECT ID: 1110-00-09
COLUMBUS TO WAUPUN
DODGE COUNTY

