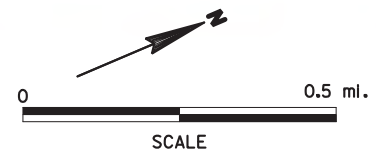




## US 151 FREEWAY STUDY PRELIMINARY CONCEPTS - ALTERNATIVE 6A -

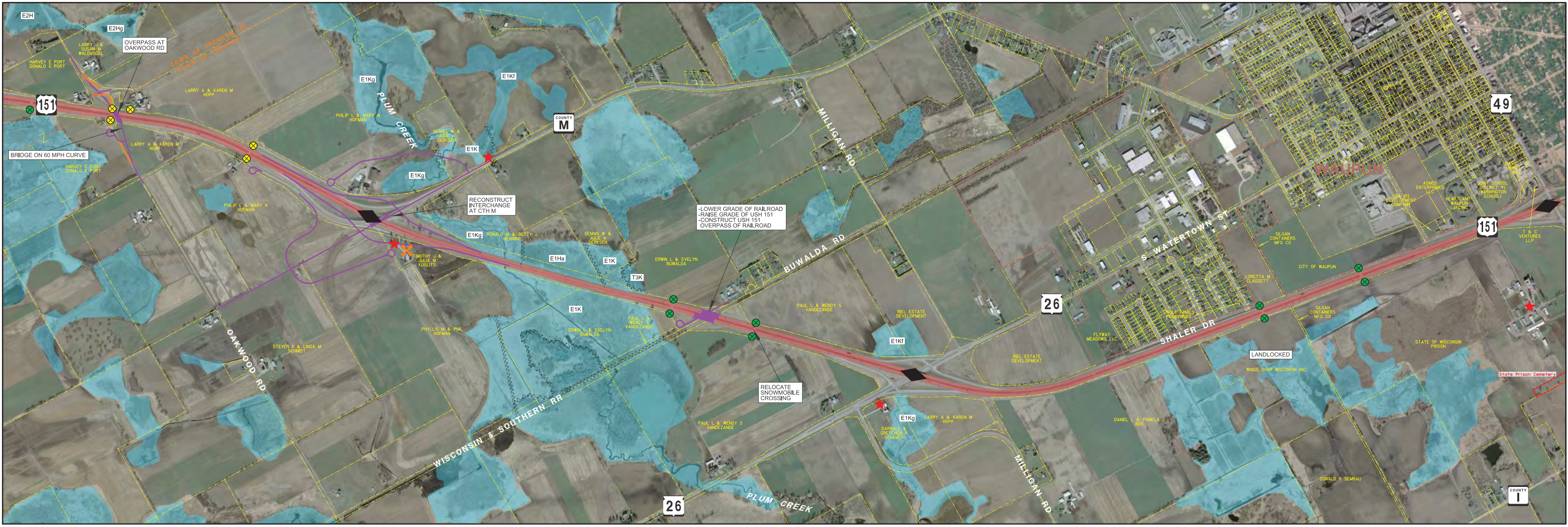
**PROPOSED INTERCHANGE - SPLIT DIAMOND AT REDWOOD ROAD & CTH C, CTH M  
PROPOSED OVERPASS AT BREEZY POINT ROAD, OAKWOOD ROAD**



PROJECT ID: 1110-00-09  
COLUMBUS TO WAUPUN  
DODGE COUNTY



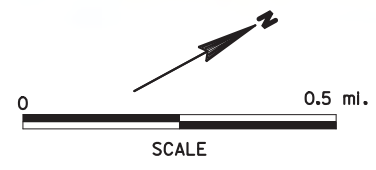




LEGEND			
	POTENTIAL INTERCHANGE ALLOWED		ACCESS REMOVAL
	POTENTIAL INTERCHANGE NOT ALLOWED		TYPE Residential
	EXISTING INTERCHANGE		Agricultural
	EXISTING GRADE SEPARATION		Commercial
	APPROXIMATE WETLAND BOUNDARY		Utility
	HISTORICAL BUILDING		Cemetery
	PROPOSED ROADWAY		E1Kg APPROXIMATE WETLAND INTER-BOUNDARY DIVISION & TYPE
	PROPOSED CUL-DE-SAC		
	PROPOSED STRUCTURE		
	OBLITERATE ROADWAY		
	POTENTIAL RELOCATION		

## US 151 FREEWAY STUDY PRELIMINARY CONCEPTS - ALTERNATIVE 6A -

**PROPOSED INTERCHANGE - SPLIT DIAMOND AT REDWOOD ROAD & CTH C, CTH M  
PROPOSED OVERPASS AT BREEZY POINT ROAD, OAKWOOD ROAD**



PROJECT ID: 1110-00-09  
COLUMBUS TO WAUPUN  
DODGE COUNTY



**AVRES ASSOCIATES**