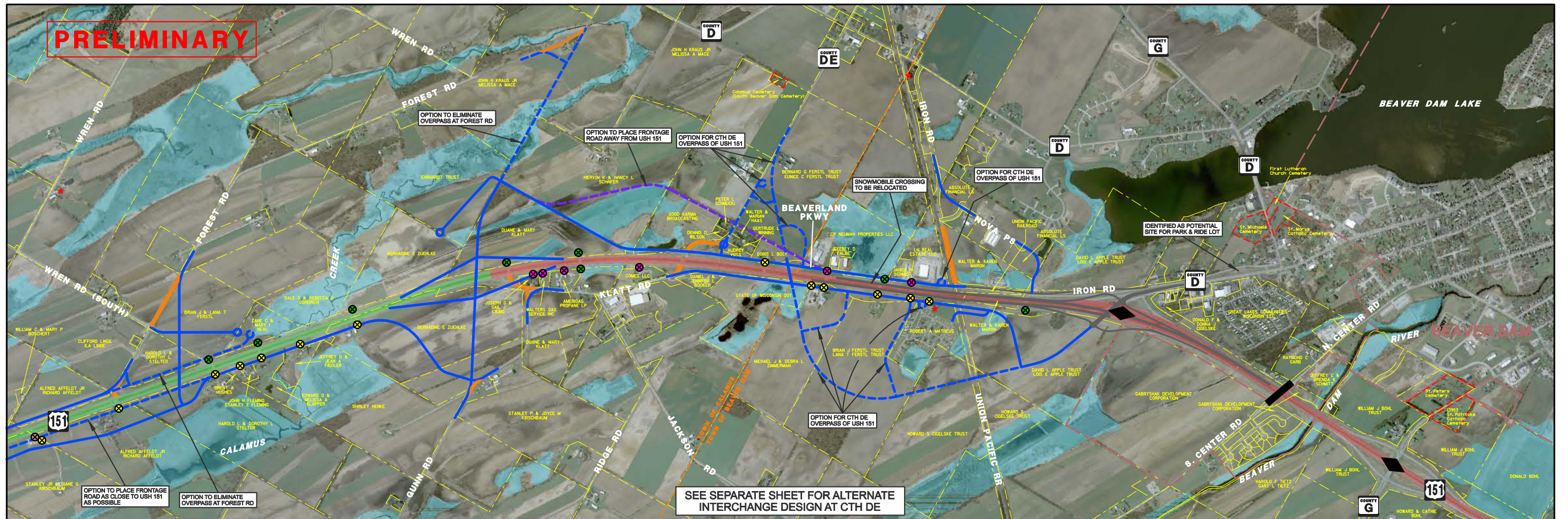


PRELIMINARY



SEE SEPARATE SHEET FOR ALTERNATE INTERCHANGE DESIGN AT CTH DE

LEGEND		
	POTENTIAL INTERCHANGE ALLOWED	
	POTENTIAL INTERCHANGE NOT ALLOWED	
	EXISTING INTERCHANGE	
	EXISTING GRADE SEPARATION	
	PROPOSED ROADWAY	
	PROPOSED CUL-DE-SAC	
	PROPOSED STRUCTURE	
	DESIGN ALTERNATIVE	
	OBLITERATE ROADWAY	
	APPROXIMATE WETLAND BOUNDARY	
	HISTORICAL BUILDING	

**US 151 FREEWAY STUDY
PRELIMINARY CONCEPTS**
PROJECT ID: 1110-00-09
COLUMBUS TO WAUPUN
DODGE COUNTY
(SHEET 2 OF 5)

