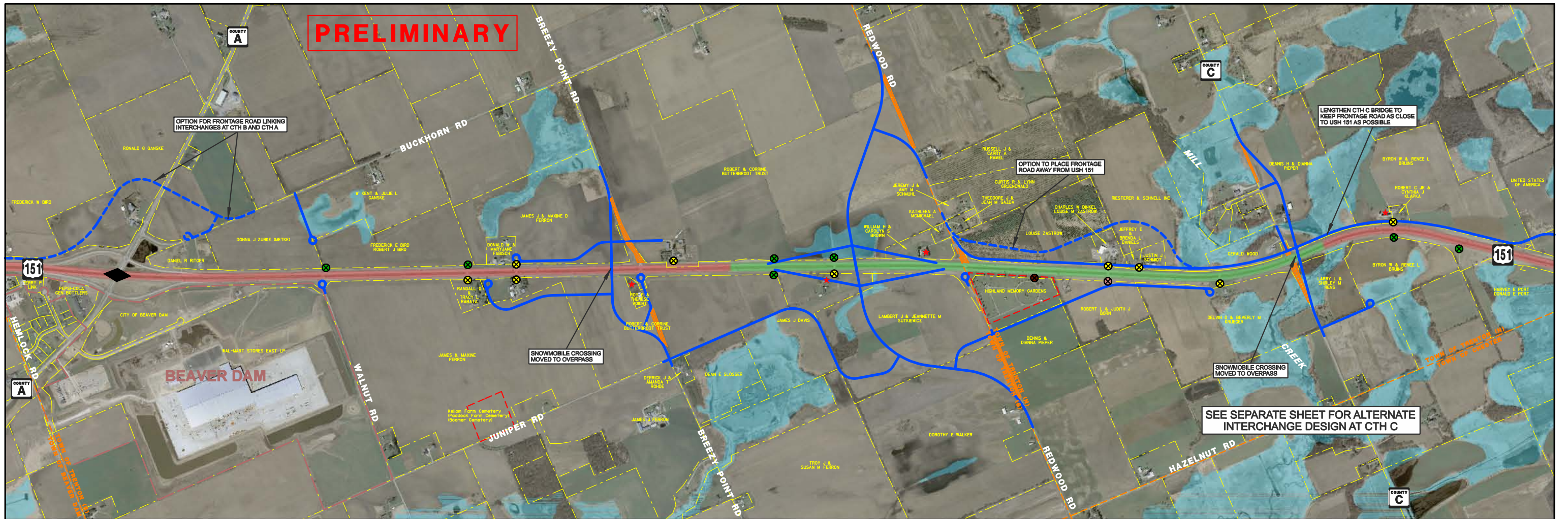


PRELIMINARY



LEGEND			
	POTENTIAL INTERCHANGE ALLOWED		ACCESS REMOVAL
	POTENTIAL INTERCHANGE NOT ALLOWED		TYPE Residential
	EXISTING INTERCHANGE		Agricultural
	EXISTING GRADE SEPARATION		Commercial
	APPROXIMATE WETLAND BOUNDARY		Utility
	HISTORICAL BUILDING		Cemetery
	PROPOSED ROADWAY		
	PROPOSED CUL-DE-SAC		
	PROPOSED STRUCTURE		
	DESIGN ALTERNATIVE		
	OBLITERATE ROADWAY		

US 151 FREEWAY STUDY PRELIMINARY CONCEPTS

PROJECT ID: 1110-00-09
COLUMBUS TO WAUPUN
DODGE COUNTY
(SHEET 4 OF 5)

