

Project 1074-00-31/61
(B-32-57)

County C bridge Over I-90 La Crosse County

Virtual Public Involvement Meeting

October 2023

Dominic Cypher, P.E.

WisDOT-SWR La Crosse



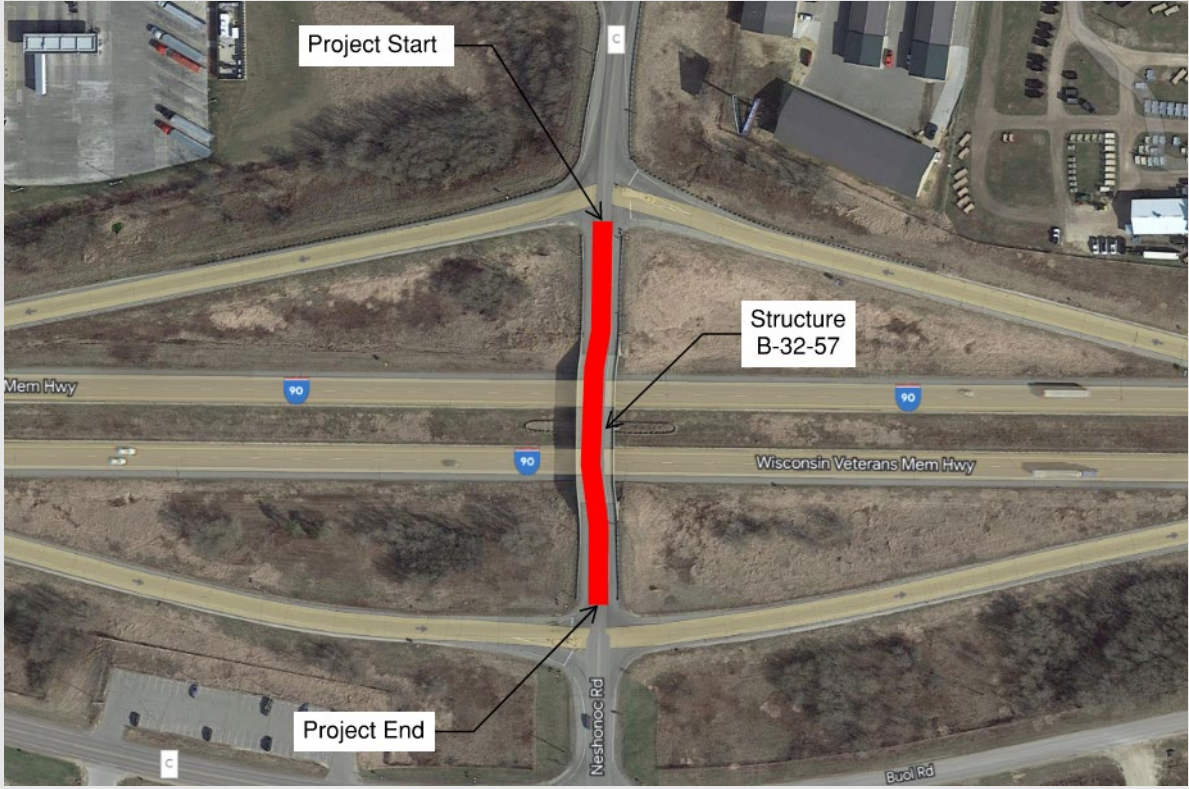
Presentation Agenda

- Project Limits
- Project Purpose and Need
- Purposed Improvements
- Business Coordination
- Upcoming Schedule
- Contact Information



Project Limits

Overview



Purpose and Need

Structure Deficiencies

- Purpose

- Maintain connectivity along County C

- Need

- Deck delamination on County C Bridge Over I-90 (B-32-57)
- A 2021 infrared survey found approximately 25% of the deck was delaminated



Proposed Improvements

- County C

- Concrete Deck Overlay
- Replace Guardrail
 - Update Class A Beam Guard to Midwest Guardrail System (MGS) Guardrail
- Install Drop Inlet Drainage System at Structures



Business Coordination

- Visit “wisconsindot.gov/together”
 - Tips, Tools, and Resources
- Project Team is Here to Help
 - What Information Would Help You...
 - Inform Customers About the Project?
 - Coordinate with Suppliers?
 - Communicate with Employees?



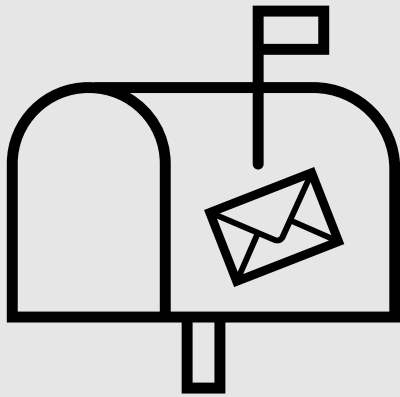
Project Schedule

- Environmental Report– April 2024
- Preliminary Design Complete – August 2024
- PS&E – August 2026
- Contract Let – November 2026
- Construction Start – Spring 2027
- Construction Completion – Fall 2027



Thank You

If you have any comments, questions, or concerns please do not hesitate to call, send an email, or mail a letter.



Project Contact Information

Brian Meyer, PE

WisDOT Project Manager

(608) 789-5676

Brian.Meyer@dot.wi.gov

Dominic Cypher, PE

WisDOT Project Engineer

(608) 785-9044

Dominic.Cypher@dot.wi.gov

Mailing Address:

WisDOT Southwest Region – La Crosse
3550 Mormon Coulee Road
La Crosse, WI 54601

