

WIS 80

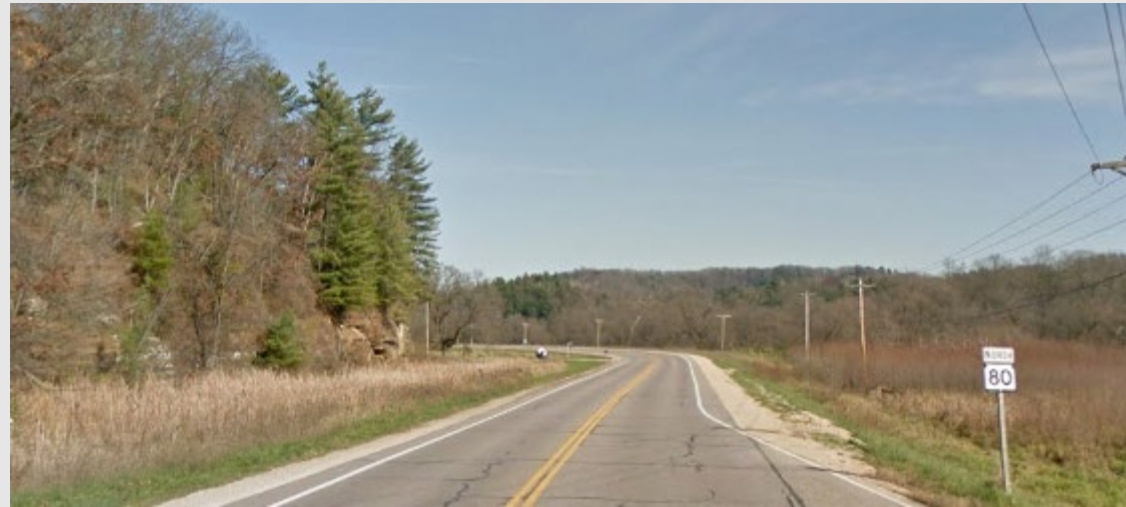
8th Street to County C Richland Center – Hillsboro Richland County

Public Involvement Meeting
Richland County, WI

December 2023

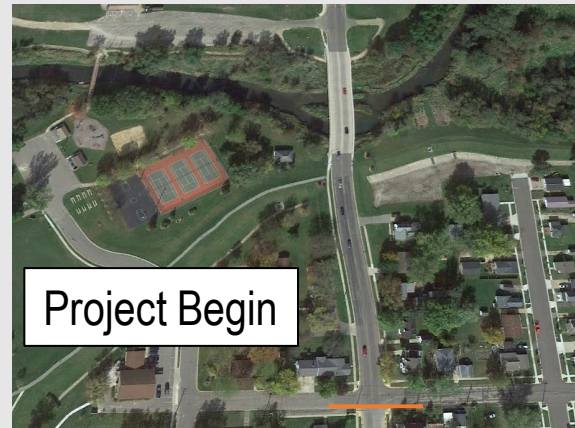
Project agenda

- Project location
- Project need
- Possible alternatives
- Preferred alternative
- Project summary
- Schedule
- Contact information



Project location

- WIS 80, Richland County
- Southern limits:
 - 8th Street
- Northern limits:
 - County C



Project need (roadway)

Pavement deterioration



Safety: guardrail replacement



Project need (structures)

- Structure WIS 80 bridge over the Pine River
 - South of County SR
 - Built in 1956
 - Deteriorated components



Project need (structures cont.)



WIS 80 bridge over Pine River

- South of County I
- Delamination/Spalling
- Exposed Rebar
- Cracking



WIS 80 bridge over Pine River

- North of US 14
- Delamination/Spalling



WIS 80 bridge over Pine River

- South of County C
- Major spalling with exposed rebar
- Potholes in wearing surface



Possible alternatives

Roadway

- No build – no improvements, routine maintenance. Does not address project purpose.
- Resurface with preventative work (preferred alternative) – mill and overlay the pavement with safety upgrades.
- Reconstruction – meets project purpose but has higher cost than the preferred alternative.

Structures

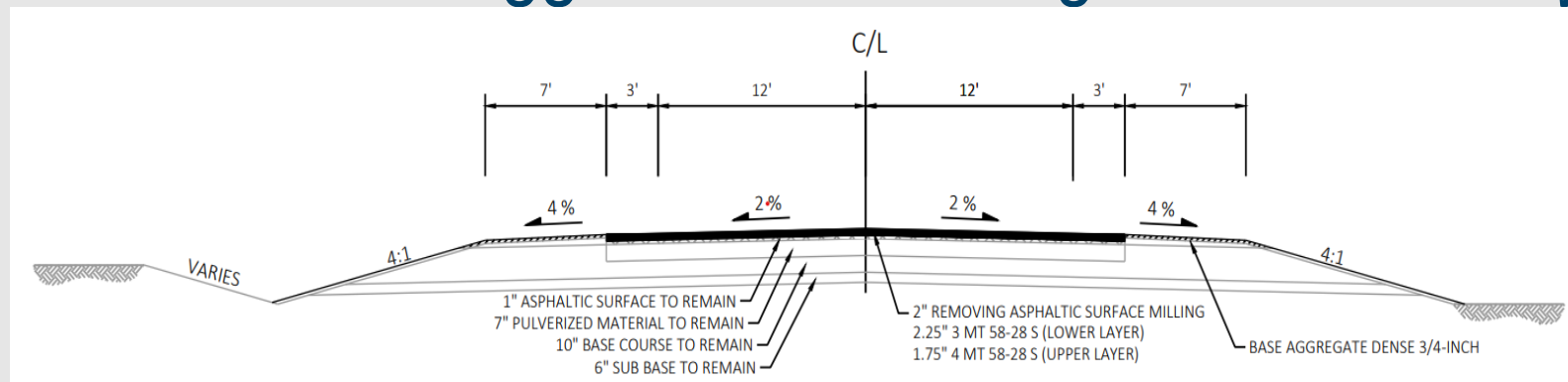
- No build – does not address deteriorated structure elements.
- Rehabilitate WIS 80 bridge over the Pine River south of County SR – structure elements have enough deterioration this would be a short-term fix.
- Replace WIS 80 bridge over the Pine River south of County SR
- Rehabilitate the three structures with deteriorated elements
- Replace the three structures with deteriorated elements – meets project purpose but has higher cost than the preferred alternative.



Preferred alternative

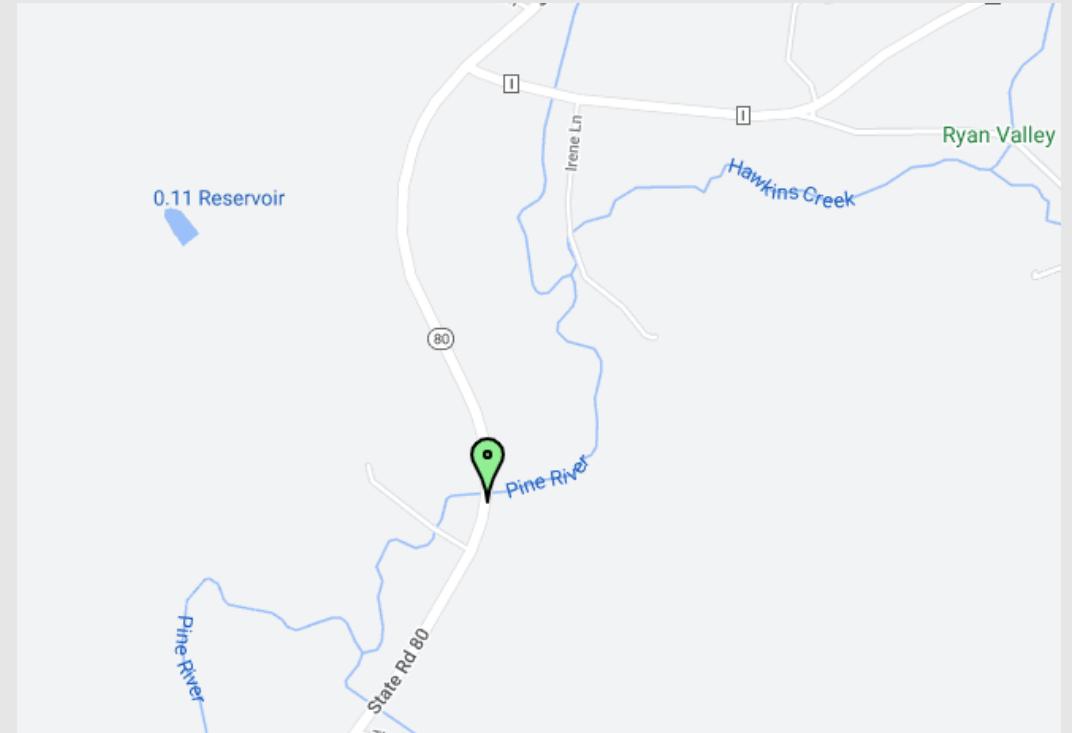
Resurface WIS 80, replace & repair structures

- Mill 2-inches off existing surface, pave new asphalt
- Replace/adjust guardrail
- Replace structure WIS 80 over Pine River south of County I
- Repair the three structures with deteriorated elements
- Traffic will be flagged while working on the roadway



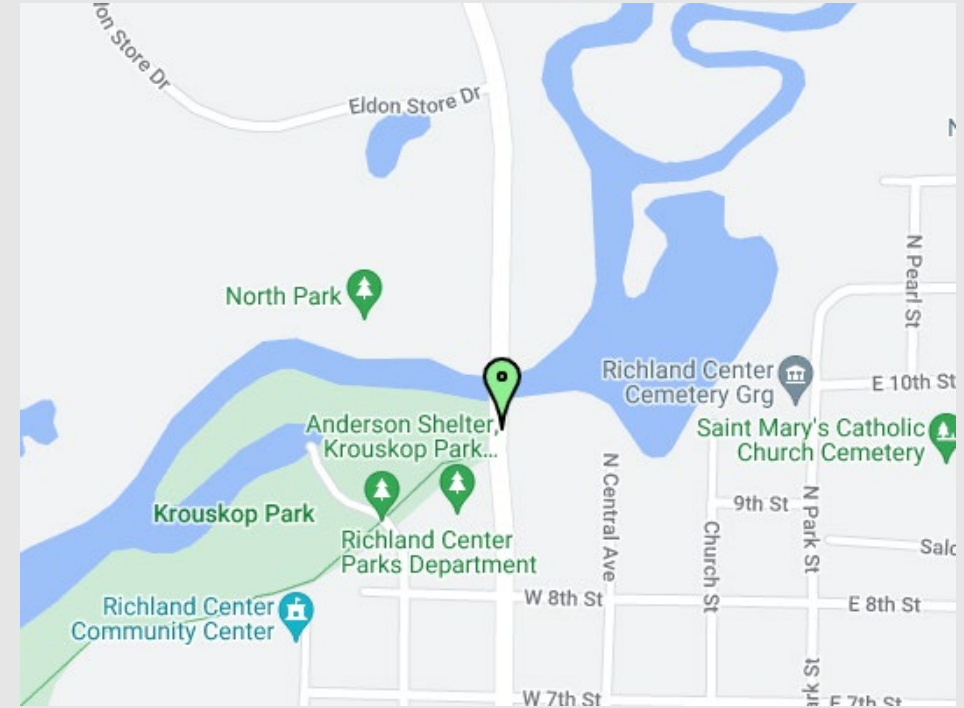
Repair WIS 80 bridge over Pine River

- South of County I
- Concrete surface repair and addition of riprap to address scour
- Temporary signals will be used during repairs



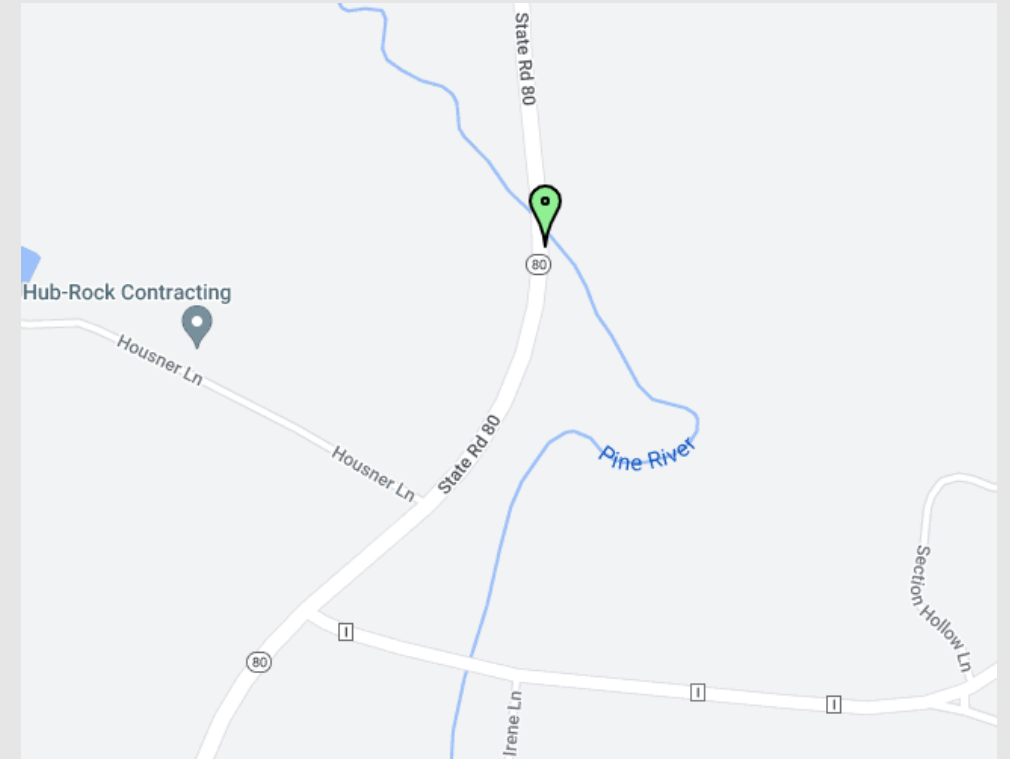
Repair WIS 80 bridge over Pine River

- North of US 14
- Deck repair, concrete surface repair, repair damaged bridge rail, and crack repair in girders
- Temporary signals will be used during repairs



Repair WIS 80 bridge over Pine River

- South of County C
- Repair slab edge, deck repair, and concrete surface repair
- Temporary signals will be used during repairs



Replace structure WIS 80 over Pine River

- South of County SR
- Preferred alternative is to detour traffic during the replacement to limit environmental impacts and the cost of the temporary structure

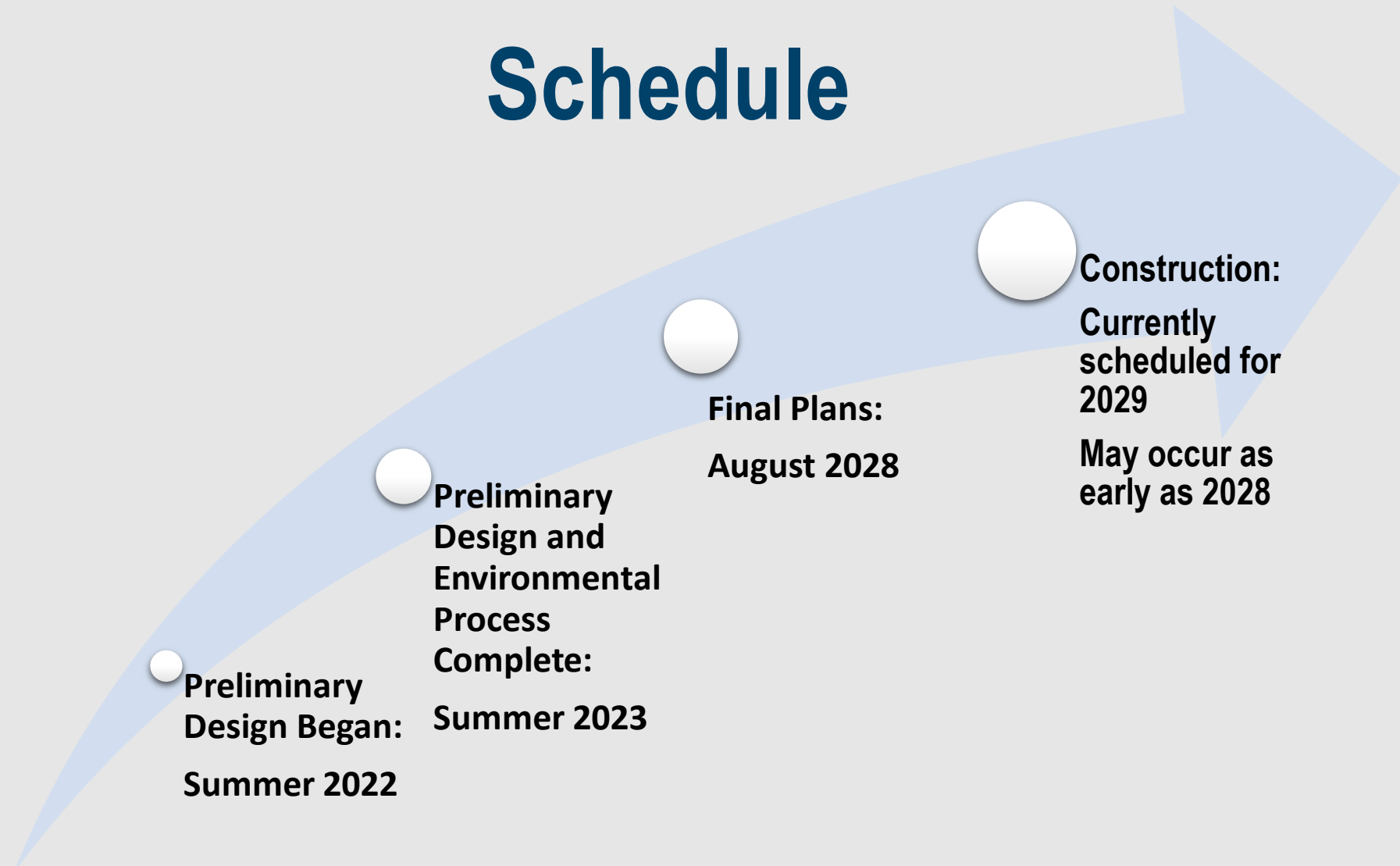


Project summary

- Access maintained to all properties and businesses
- WIS 80 will remain open to traffic during roadway improvements
- Temporary lane closures utilizing flaggers will be in place during roadway improvements
- Single lane closures utilizing a temporary signals to control traffic will be used for structure rehabilitation work
- A detour will be signed, or a temporary bypass road and structure will be used for the replacement of the WIS 80 bridge Pine Creek south of County SR



Schedule



Preliminary Design Began: Summer 2022

Preliminary Design and Environmental Process Complete: Summer 2023

Final Plans: August 2028

Construction: Currently scheduled for 2029
May occur as early as 2028



Contact information

Josh Weiss, PE

Project Manager

CORRE, Inc.

6510 Grand Teton Plaza

Madison, WI 53719

jweiss@correinc.com

(608) 826-6140

Nathaniel Schumaker, PE

Project Manager

WisDOT

3550 Mormon Coulee Road

La Crosse, WI 54601

Nathaniel.Schumaker@dot.wi.gov

(608) 789-5538

Michael Bie

Communication Manager

WisDOT

3550 Mormon Coulee Road

La Crosse, WI 54601

Michael.Bie@dot.wi.gov

(608) 246-7928

