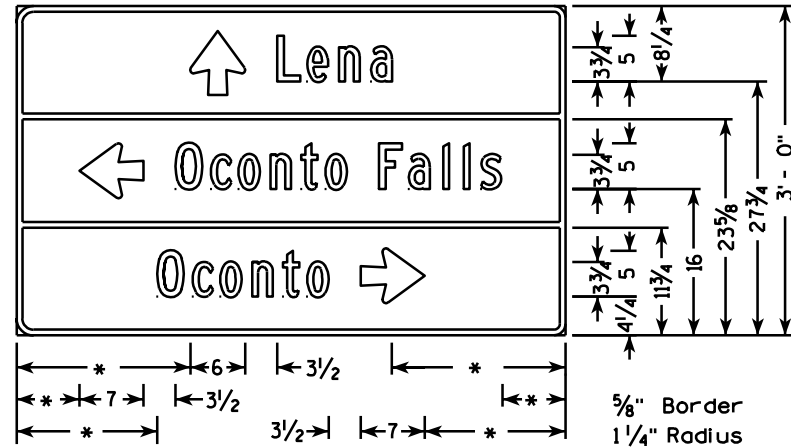
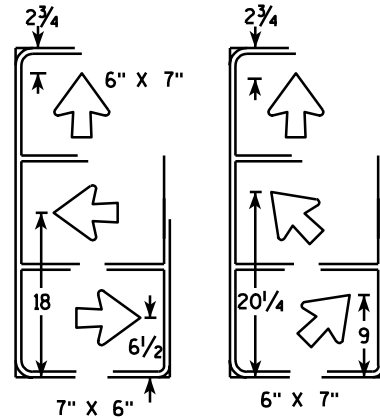


TYPICAL EXAMPLES



D1-3

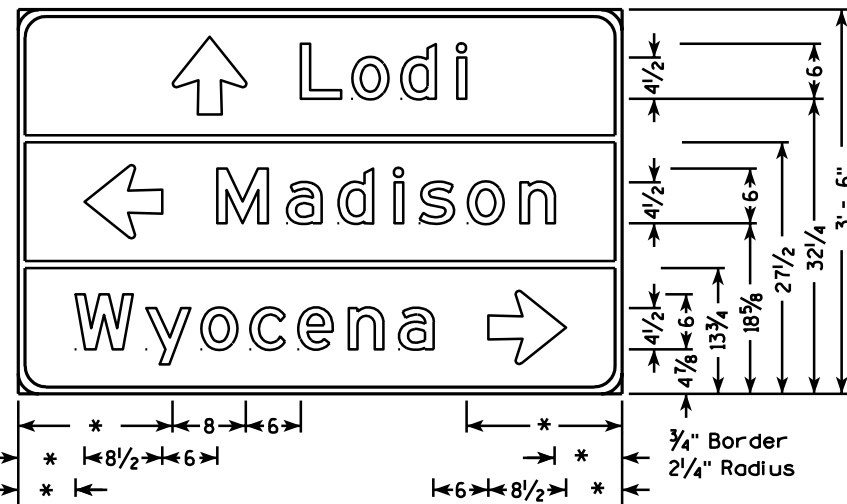


TYPICAL ARROW PLACEMENTS

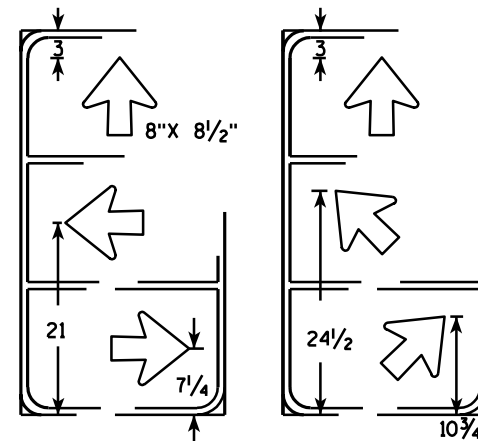
NOTES

1. All signs are Type II - Type H Reflective
2. Color:
Background - Green
Message - White - Type H Reflective
3. Message Series for 3 3/4" L C is Series C and Series E for 4 1/2" L C and 6" L C.
4. Over all length of these signs is in 6" increments.
5. Arrows as per standard plate A1-2.
6. Tilt arrow is always at 45°.
7. Each line of copy including arrow is centered on the board.

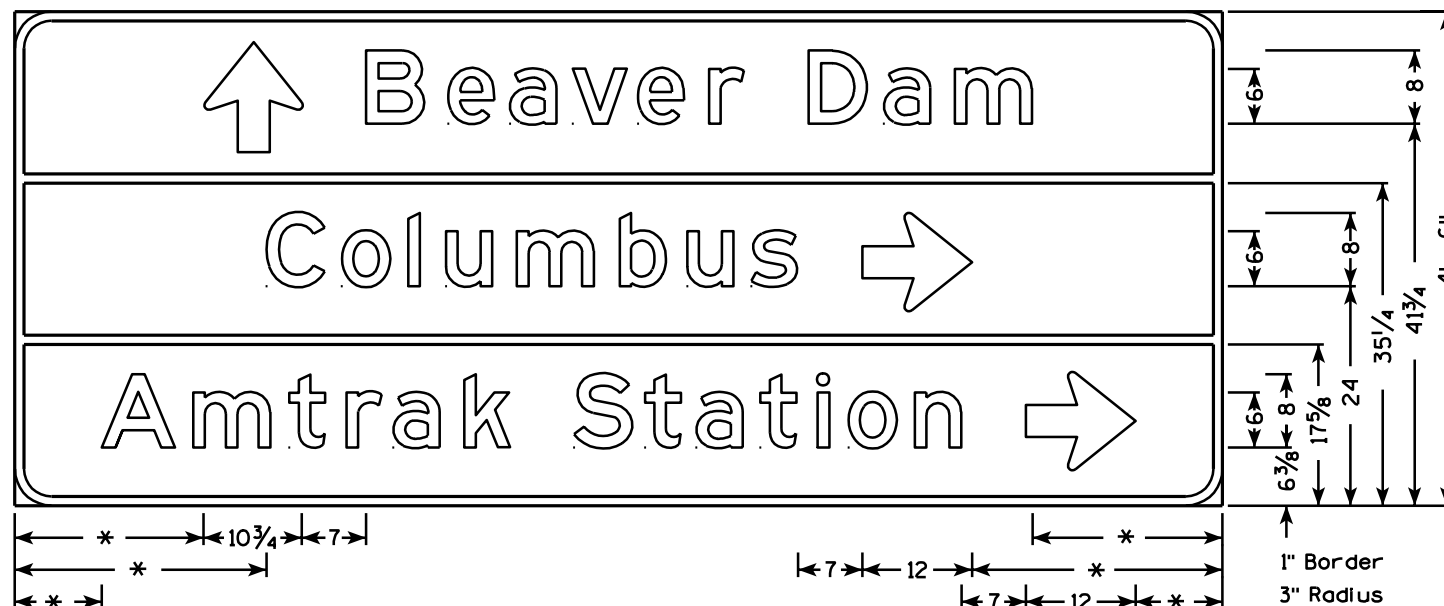
* Minimum dimension normally height of upper case letter.



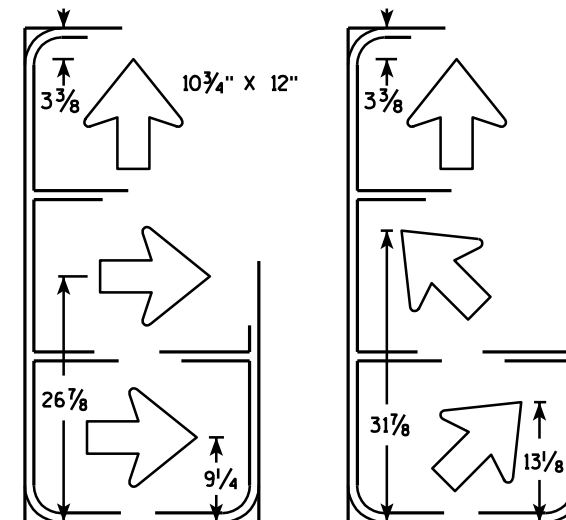
D1-3



TYPICAL ARROW PLACEMENTS



D1-3



TYPICAL ARROW PLACEMENTS

DESTINATION - DIRECTIONAL SIGNS

WISCONSIN DEPT OF TRANSPORTATION

APPROVED

Chester J. Spang
for State Traffic Engineer

DATE 2/18/02

PLATE NO. A11-11E.3

PROJECT NO:

HWY:

COUNTY:

SHEET NO:

E