

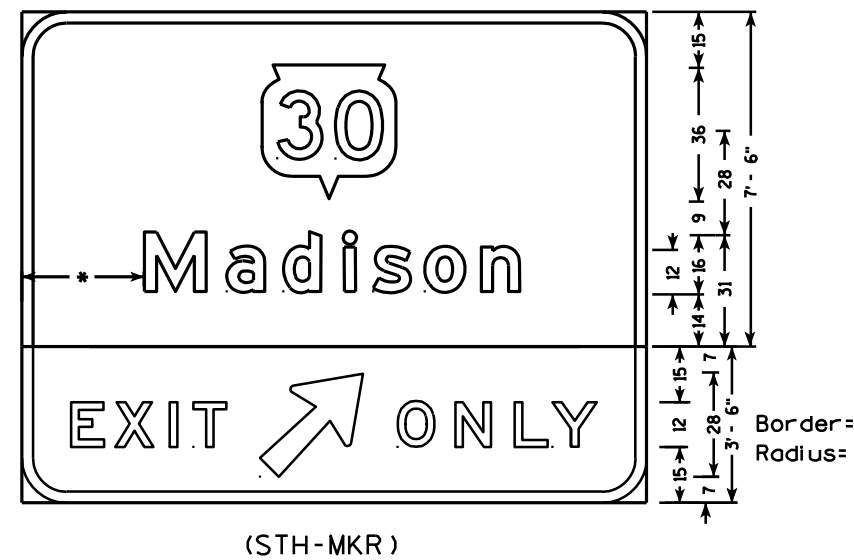
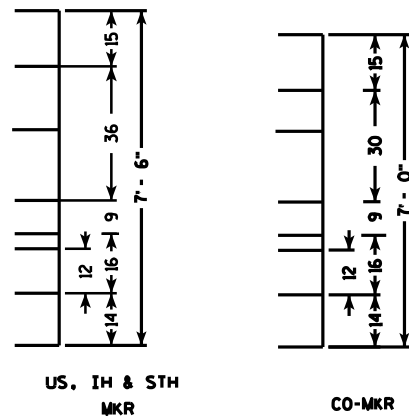
NOTES

1. All signs shall have 12" LC/16" UC message copy, Series E Modified. All CAP words are Series E lettering
2. Vertical spacing shall be as shown in the typical. Note the difference between the county marker heads and all the other marker heads and the associated spacings.
3. The sign code for these signs is normally E6-1.

TYPICAL EXAMPLES

VERTICAL SPACING LAYOUTS

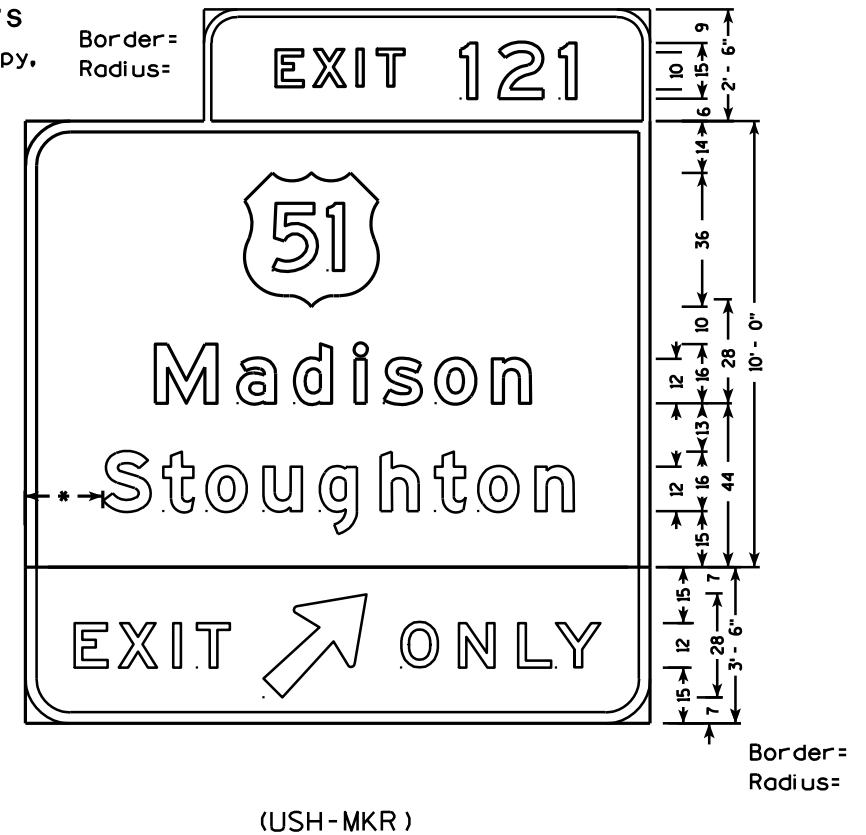
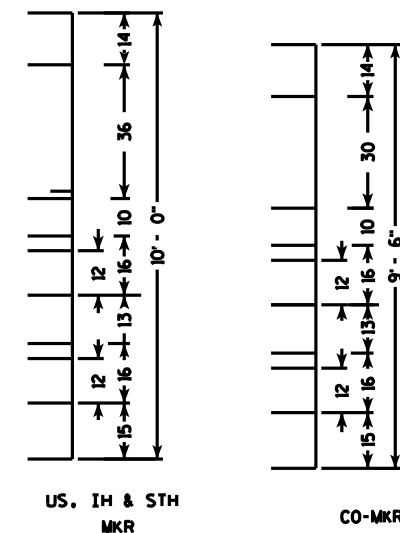
Shield and one line of message copy.



* Minimum dimension is normally height of upper case letter. However the Exit Only Plaque may control the horizontal dimension of the sign.

VERTICAL SPACING LAYOUTS

Shield and two lines of message copy, control message on bottom



7

7

OVERHEAD MOUNTED
EXIT GUIDE SIGNS

WISCONSIN DEPT OF TRANSPORTATION

APPROVED *Matthew R. Rauch*
for State Traffic Engineer

DATE 6/2/10 PLATE NO. A11-5.8