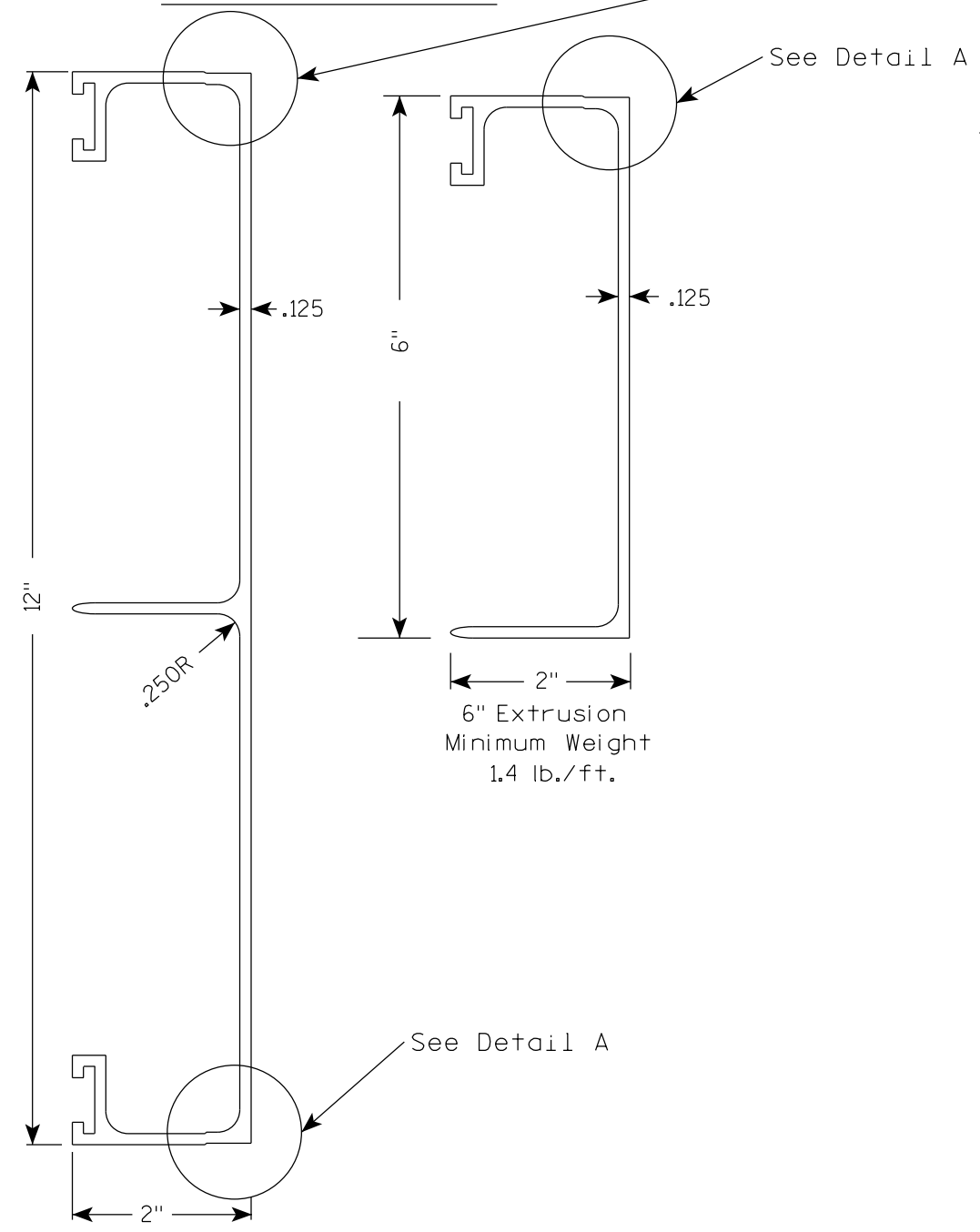


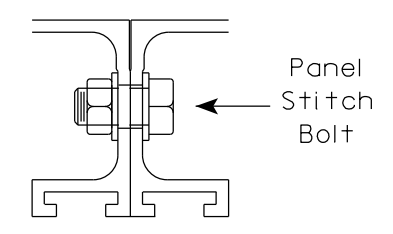
Extruded Shape

Hardware



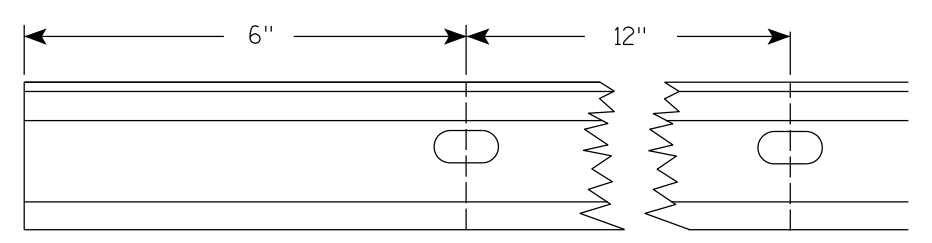
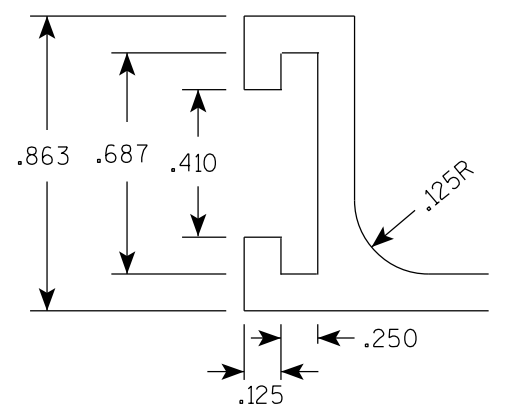
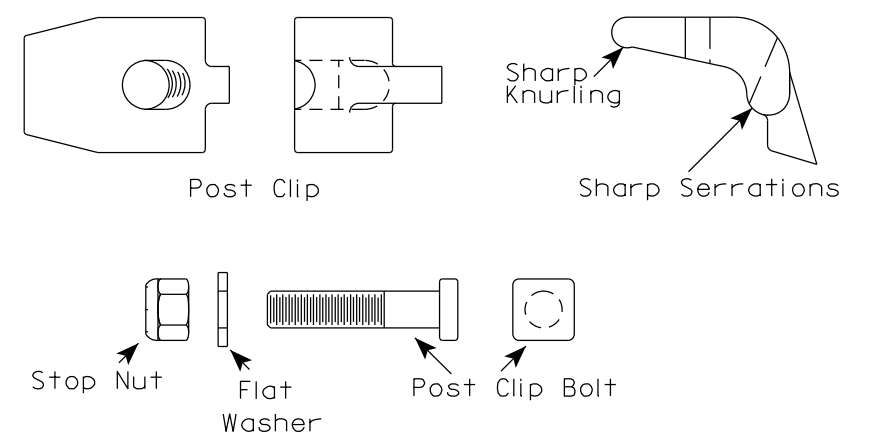
STITCH BOLT, WASHER & NUT

The hardware includes:  
 3/8" - 16 X 3/4" Economy Bolt 2024-T4 alloy  
 3/8" - Stainless steel stop nut  
 3/8" X .064 Flat Washers, Alclad 2024-T4 alloy

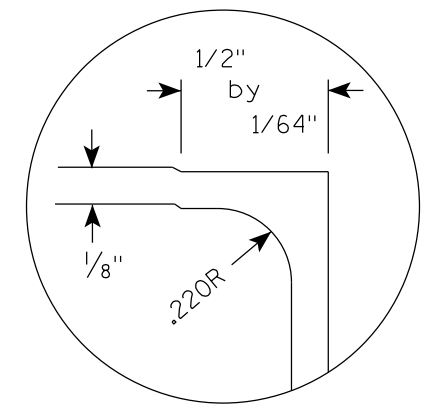


POST CLIP, POST CLIP BOLT, WASHER & NUT

Post Clip shall be Alum. Alloy 356-T6  
 Post Clip Bolt shall be Stainless Steel.  
 Flat washer shall be 3/8" X .091, Stainless Steel.  
 Stop nut shall be stainless steel.



Punch 7/16" x 7/8" ovalholes beginning 6" in from end of extrusion 12" CC on both edges of 6" and 12" panels.



DETAIL A (EDGE WRAP JOINT)

NOTES

1. The contractor may select any brand of extrusion that conforms to the illustrations or meets with the approval of the engineer, but all extrusions used on this contract shall be of the same brand.
2. Panel Stitch Bolts shall be used to assemble adjacent panels. Maximum stitch bolt spacing shall be 24" C-C, and a minimum of 4 bolts shall be used to connect any two extrusions.
3. Post Clips shall be used to attach the sign panel to the sign support.
4. Edge wrapping of sign sheeting required on all extrusions joints shown in Detail A.

ALUMINUM EXTRUSIONS FOR TYPE I SIGNS	
WISCONSIN DEPT OF TRANSPORTATION	
APPROVED	<i>Matthew R. Rauch</i> For State Traffic Engineer
DATE 1/07/20	PLATE NO. A5-2.10