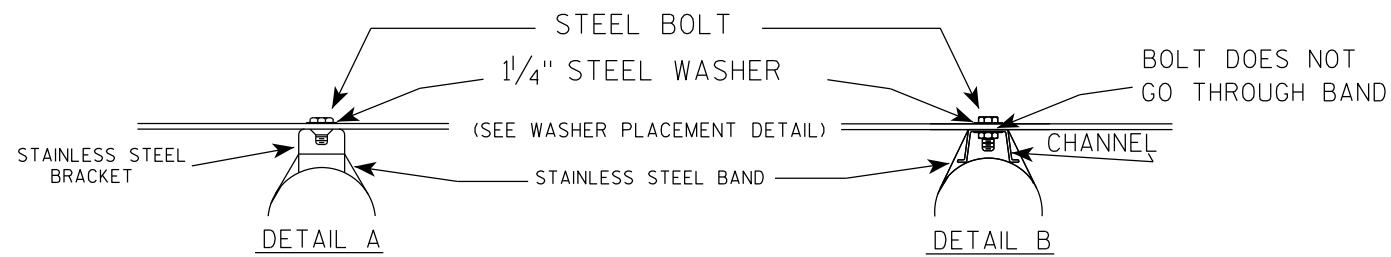
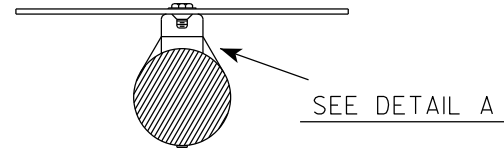
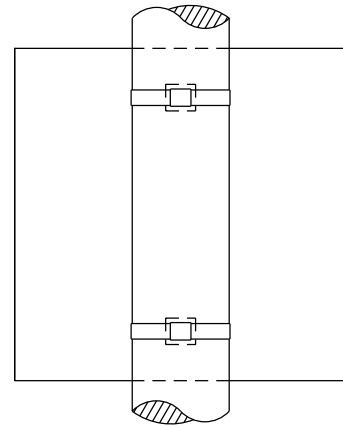
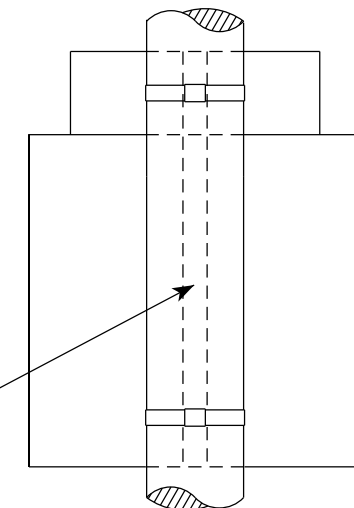


# BANDING

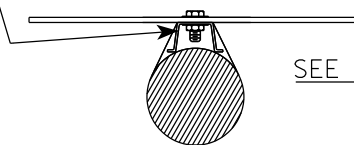
SINGLE SIGN



"J" ASSEMBLY

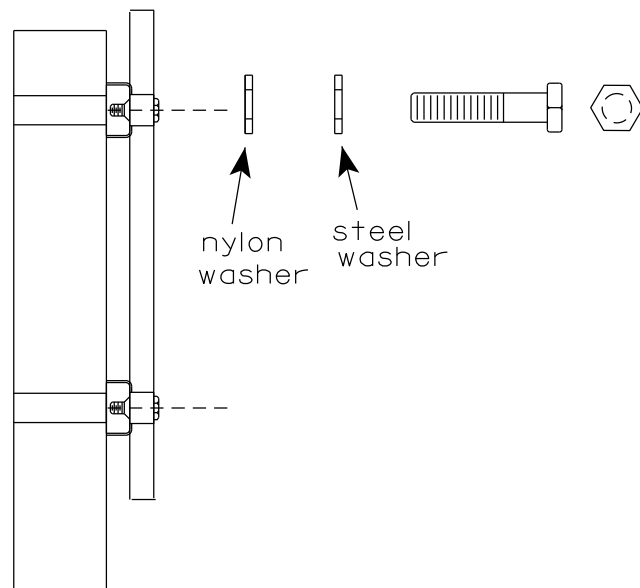


CHANNEL  
SEE TYPICAL PANEL  
INSTALLATION SHEET



- GENERAL NOTES**
1. Any sign over 3 feet in width shall use the V-Block banding method. See A5-10 standard plate.
  2. Signs 3 feet or greater in height shall have three bracket bands installed. Signs less than 3 feet in height shall have two bracket bands installed.
  3. Banding and assembly bracket shall be stainless steel. All bands shall be  $\frac{3}{4}$ " in width and 0.025" thickness.
  4. ALL SIGN MOUNTING BOLTS AND WASHERS SHALL BE EITHER:
    - a. Hot dip or mechanically galvanized in accordance with ASTM Designation: A 153, Class D
    - b. Electro-galvanized in accordance with ASTM designation: B 633, Type III, SC 3

WASHER PLACEMENT



WASHERS (ALL POSTS) -  
 1-1/4" O.D. X 3/8" I.D. X 1/16" STEEL  
 1-1/4" O.D. X 3/8" I.D. X .080 NYLON  
 FOR ALL TYPE H SIGNS

STANDARD SIGN  
SIGN BANDING DETAILS

WISCONSIN DEPT OF TRANSPORTATION

APPROVED *Matthew R. Rauch*  
for State Traffic Engineer

DATE 6/10/19 PLATE NO. A5-9.4