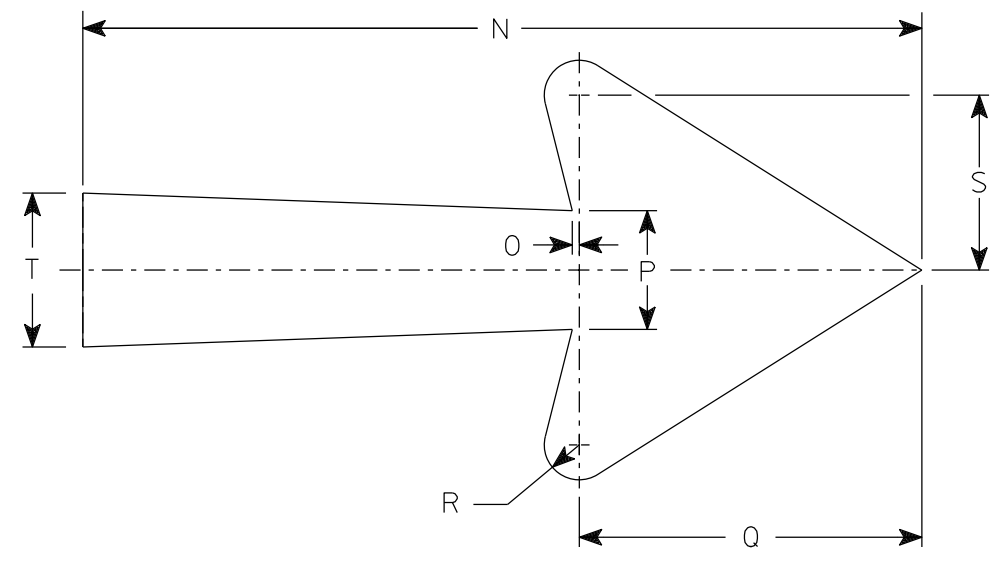
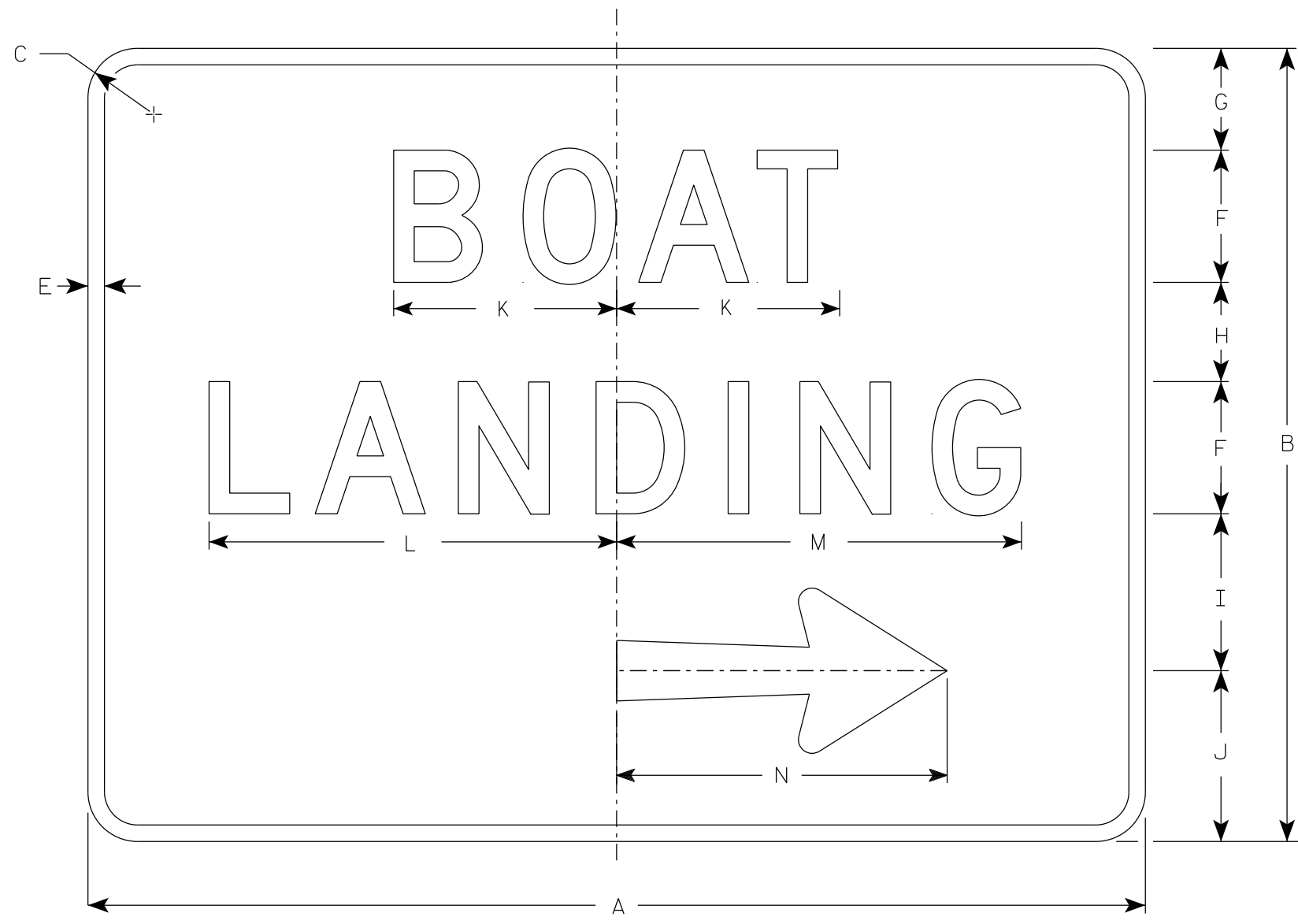


NOTES

1. Sign is Type II - Type H Reflective
2. Color:  
Background - Brown  
Message - White
3. Message Series - D
4. D7-56L is the same as D7-56R except the arrow is reversed.



Arrow Detail

D7-56R

7

7

SIZE	A	B	C	D	E	F	G	H	I	J	K	L	M	N	O	P	Q	R	S	T	U	V	W	X	Y	Z	Area sq. ft.
1																											
2	48	36	2 1/4		3/4	6	4 5/8	4 1/2	7 1/8	7 3/4	10 1/8	18 1/2	18 3/8	15	1/8	2 1/8	6 1/8	5/8	3 1/8	2 3/4							12.0
3	60	48	3		1	8	6	6	10	10	13 1/2	23 3/8	23 3/8	21	1/4	2 3/4	7 7/8	3/4	4	4 1/4							20.0
4																											
5																											

STANDARD SIGN  
D7-56

WISCONSIN DEPT OF TRANSPORTATION

APPROVED *Matthew R. Rauch*  
for State Traffic Engineer

DATE 4/9/19 PLATE NO. D7-56.9

PROJECT NO: \_\_\_\_\_ HWY: \_\_\_\_\_ COUNTY: \_\_\_\_\_ SHEET NO: **E**