



Wisconsin Department of Transportation

April 26, 2017

Division of Transportation Systems Development

Bureau of Project Development
 4802 Sheboygan Avenue, Rm 601
 P O Box 7916
 Madison, WI 53707-7916

Telephone: (608) 266-1631
 Facsimile (FAX): (608) 266-8459

NOTICE TO ALL CONTRACTORS:

Proposal #01: 1007-10-84, WISC 2017 260
Illinois State Line – Madison
Church Street to CTH AB
IH 39
Dane County

1007-10-88, WISC 2017 261
Illinois State Line – Madison
East Church Road to Church Street
IH 39
Dane County

Letting of May 09, 2017

This is Addendum No. 01, which provides for the following:

Special Provisions:

Revised Special Provisions	
Article No.	Description
43	Test Pits, Item SPV.0060.003

Schedule of Items:

Revised Bid Item Quantities					
Bid Item	Item Description	Unit	Old Quantity	Revised Quantity	Proposal Total
205.0100	Excavation Common	CY	199,254	-267	198,987
305.0120	Base Aggregate Dense 1 ¼-inch	Ton	219,878	627	220,505
312.0110	Select Crushed Material	Ton	12,571	-946	11,625
415.0100	Concrete Pavement 10-inch **P**	SY	14,955	-1,119	13,836
416.0610	Drilled Tie Bars	EACH	1,978	-207	1,771
450.4000	HMA Cold Weather Paving	TON	8,911	94	9,005
455.0605	Tack Coat	GAL	9,123	56	9,179
460.7222	HMA Pavement 2 HT 58-28 S	TON	35,737	235	35,972
460.7424	HMA Pavement 4 HT 58-28 H	TON	22,818	141	22,959
503.0128	Prestressed Girder Type I 28-inch **P**	LF	2,016	259	2,275
624.0100	Water	MGAL	2785	6	2791
SPV.0035.001	Roadway Embankment	CY	164,247	-7	164,240

Plan Sheets:

Revised Plan Sheets	
Plan Sheet	Plan Sheet Title (brief description of changes to sheet)
1007-10-84	
7	Typical Sections (replaced inside shoulder concrete with HMA)
20-21	Plan Details (replaced inside shoulder concrete with HMA)
88	Traffic Control Typical Section (revised stage callout)
105	Traffic Control Typical Section revised stationing)
114-120	Traffic Control Stage 2 (missing drums added)
133	Miscellaneous Quantities (revised Earthwork Summary)
134	Miscellaneous Quantities (revised Base Aggregate, HMA, & Concrete Pavement Item schedules)
136	Miscellaneous Quantities (revised Storm Sewer schedules)
139	Miscellaneous Quantities (revised Test Pits schedule to include Select Crushed Mat)
248	Structure Plan (revision to wing to avoid gas utility)
250	Structure Plan (revision to prestressed girder quantity)
251	Structure Plan (revision to wing to avoid gas utility)
252	Structure Plan (revision to wing to avoid gas utility)
253	Structure Plan (revision to wing to avoid gas utility)
283-288	Earthwork Data (revised tables)
291-293	Cross Sections (revised inside shoulder pavements)
1007-10-88	
16	Typical Sections (replaced inside shoulder concrete with HMA)
68	Plan Details (replaced inside shoulder concrete with HMA)
150	Miscellaneous Quantities (revised Earthwork Summary)
151	Miscellaneous Quantities (revised Base Aggregate, HMA, & Concrete Pavement Item schedules)
155	Miscellaneous Quantities (revised Test Pits schedule to include Select Crushed Mat)
368	Earthwork Data (revised table)
499	Cross Sections (revised inside shoulder pavements)

The responsibility for notifying potential subcontractors and suppliers of these changes remains with the prime contractor.

Sincerely,

Mike Coleman

Proposal Development Specialist
Proposal Management Section

ADDENDUM NO. 01
1007-10-84/1007-10-88
April 26, 2017

Special Provisions

43. Test Pits, Item SPV.0060.003.

A Description

This special provision describes excavating test pits and backfilling as directed by the engineer and as hereinafter provided. Test pits are for the purpose of locating and relieving trapped water within the existing roadway embankments.

B Materials

Construct test pits conforming to standard spec 205.2 for Roadway Excavation.

Provide materials to conform to standard spec 312.2 for Select Crushed Material.

C Construction

All excavation of test pits shall be performed during daytime hours. The engineer shall be present during excavation.

The location of test pits shall be determined by the engineer. Contact the engineer at least 4 weeks prior to earthwork operations. Test pits shall be excavated at least 2 weeks prior to roadway excavation operations. Different timelines may be required by the engineer.

Excavate the foreslope of the existing roadway embankment beginning at the edge of the existing subgrade shoulder point at a slope of 1:1 down to the elevation of the toe of existing slope, but no lower than 1 foot above the ditch flow line if a ditch is present. Excavations shall be 10 feet wide measured parallel to the roadway shoulder. The bottom of the test pit shall be sloped to drain away from the roadway.

If water is present or seeping from the embankment, backfill with select crushed material where the test pit is located on an embankment that is supporting live traffic. Place select crushed material to stabilize the test pit and allow water to seep out. If the embankment is not supporting live traffic, then the test pit shall remain open and maintained until seeping stops or as approved by the engineer.

If water is not present or seeping from the embankment, backfill the test pit with roadway embankment or a material approved by the engineer.

D Measurement

The department will measure Test Pits by each unit, acceptably installed.

The department will measure Select Crushed Material as specified in standard spec 312.4.

E Payment

The department will pay for measured quantities at the contract unit price under the following bid item:

ITEM NUMBER	DESCRIPTION	UNIT
SPV.0060.003	Test Pits	Each

Payment is full compensation for all engineer approved work specified including excavating, sloping, shaping, stockpiling, backfilling with roadway embankment, compacting, and maintaining.

If select crushed material is required for backfilling, the department will pay for select crushed material under item 312.0110. The department will pay for erosion control, if required, under the erosion control bid items.

Schedule of Items

Attached, dated April 26, 2017, are the revised Schedule of Items Pages 2 – 5, 11, and 15.

Plan Sheets

The following 8½ x 11-inch sheets are attached and made part of the plans for this proposal:

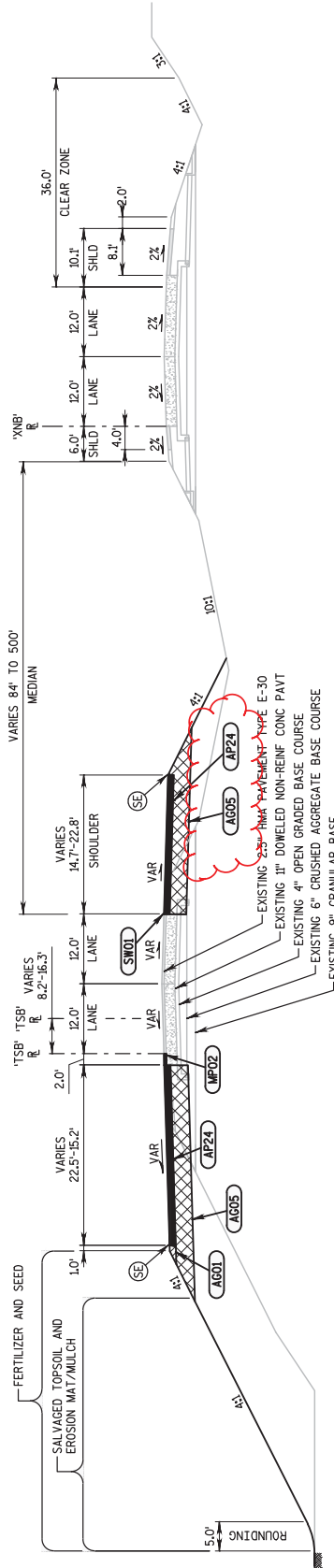
1007-10-84

Revised: 7, 20, 21, 88, 105, 114 – 120, 133, 134, 136, 139, 248, 250, 251, 252, 253, 283 – 288, and 291 – 293.

1007-10-88

Revised: 16, 68, 150, 151, 155, 368, and 499.

END OF ADDENDUM



TYPICAL FINISHED SECTION

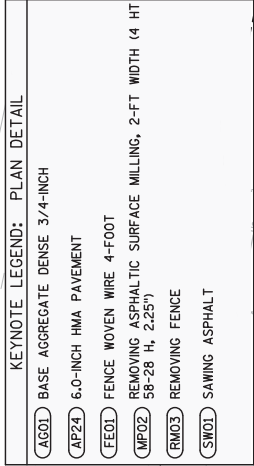
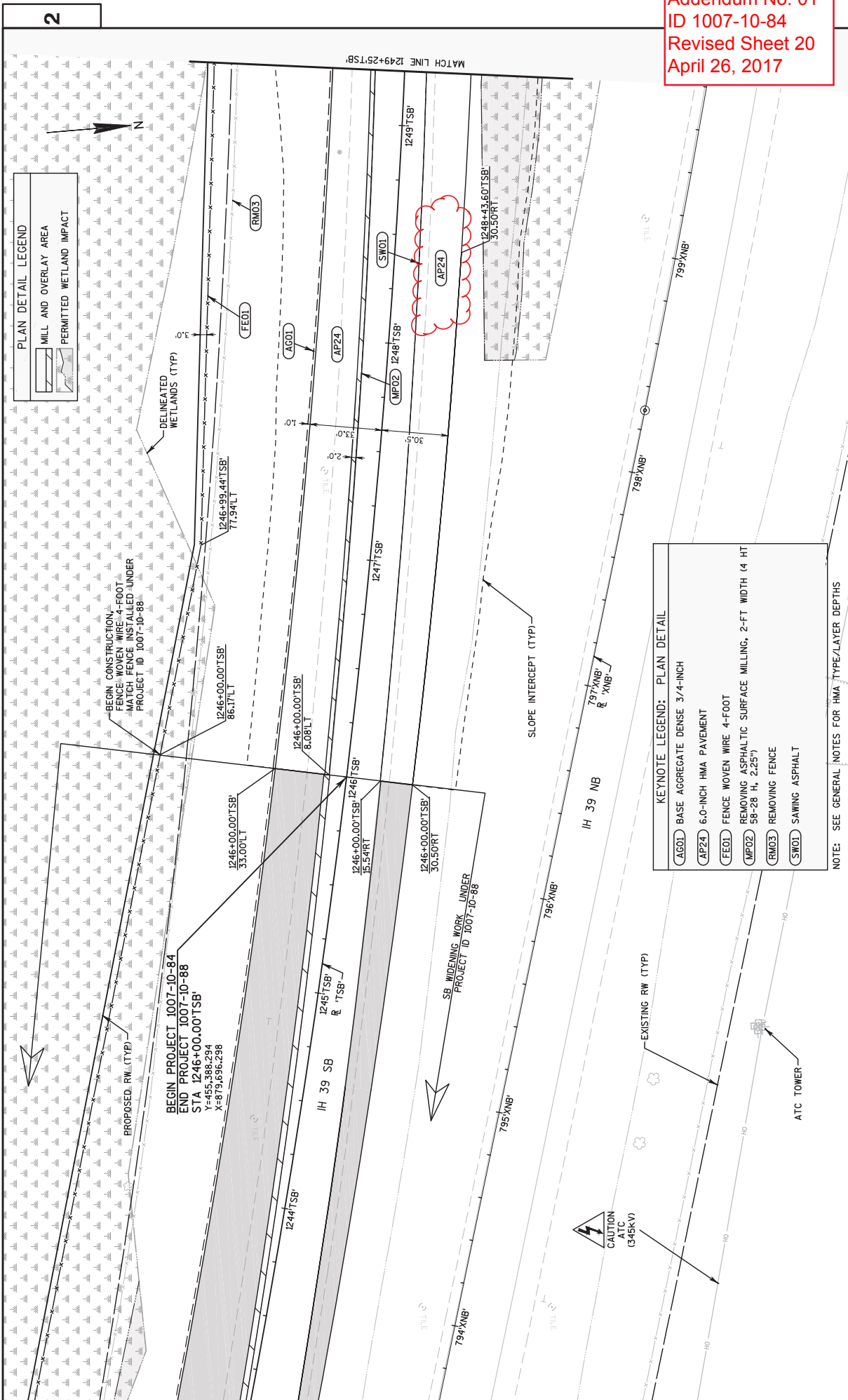
STA 1246+00'TSB' TO 1250+81'TSB'

KEYED NOTE LEGEND

- (AP24) 6.0-INCH HMA PAVEMENT NEW CONSTRUCTION
2.25-INCH TOP LAYER HMA PAVEMENT 4 HT 58-28 H
3.75-INCH LOWER LAYER HMA PAVEMENT 2 HT 58-28 S
- (MF02) REMOVING ASPHALTIC SURFACE MILLING, 2.25-INCH
+ 2.25-INCH 4 HT 58-28 H, 2.25-INCH
- (AG01) BASE AGGREGATE DENSE 3/4-INCH 16.0 OR 6.5-INCH
- (AG02) BASE AGGREGATE DENSE 1 1/4-INCH, 6-INCH
- (AG05) BASE AGGREGATE DENSE 1 1/4-INCH, 17-INCH
- (AG07) SELECT CRUSHED MATERIAL, 16-INCH
- (SW01) SAWING ASPHALT
- (SE) SAFETY EDGE (INCIDENTAL)

Addendum No. 01
 ID 1007-10-84
 Revised Sheet 7
 April 26, 2017

Addendum No. 01
 ID 1007-10-84
 Revised Sheet 20
 April 26, 2017



NOTE: SEE GENERAL NOTES FOR HMA TYPE/LAYER DEPTHS

2

2

PROJECT NO: 1007-10-84
 COUNTY: DANE
 HWY: IH 39
 PLAN DETAILS
 SHEET 20
 E

FILE NAME : 021200.PD (PLAN DETAILS TSB).DWG
 PLOT DATE : 4/24/2017 12:59 PM
 PLOT BY : SEH
 LAYOUT NAME : 01
 PLOT SCALE : 1.0 IN = 40.0 FT
 WISDOT/CADD SHEET 42

PLAN DETAIL LEGEND

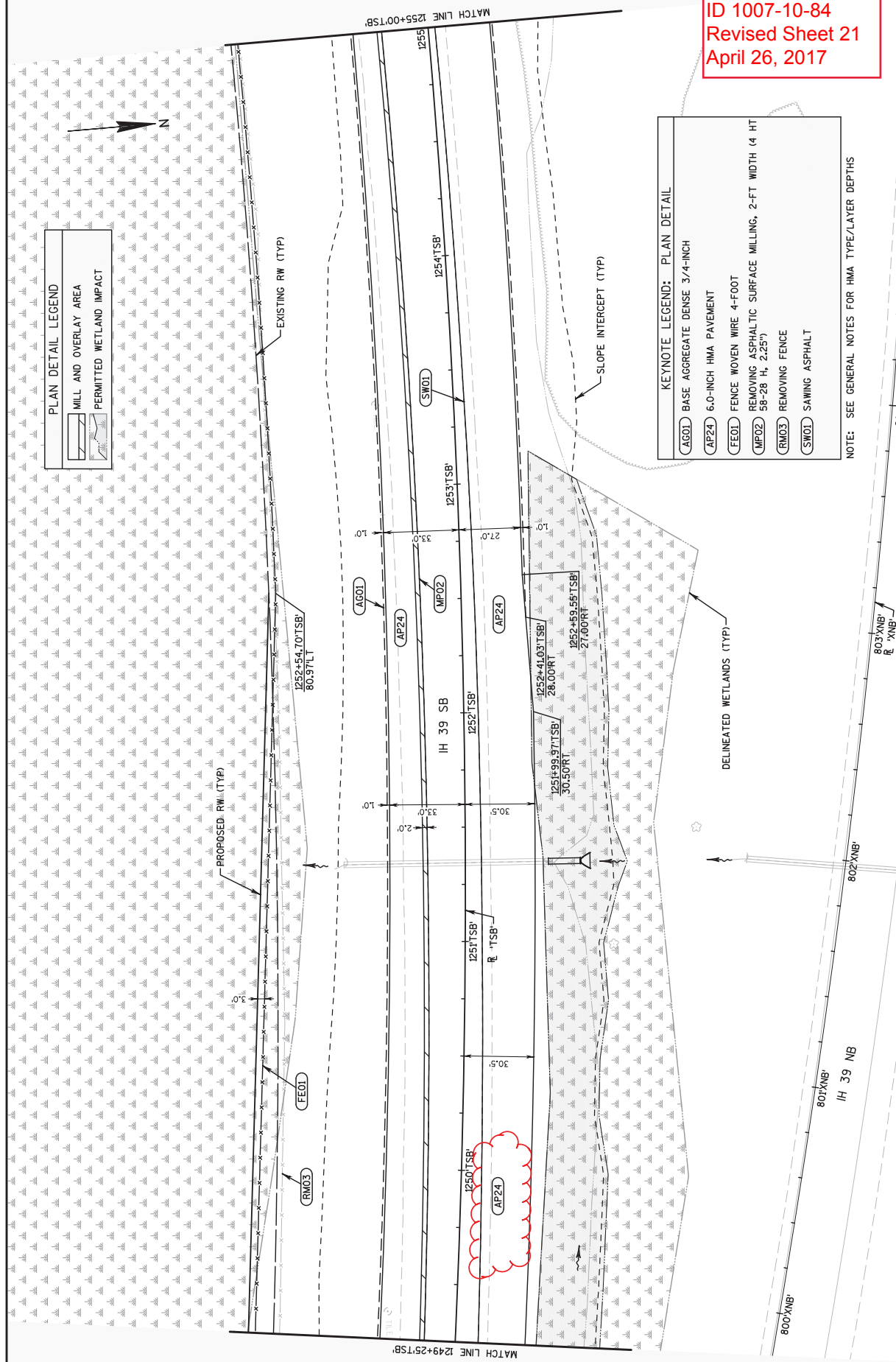
- MILL AND OVERLAY AREA
- PERMITTED WETLAND IMPACT

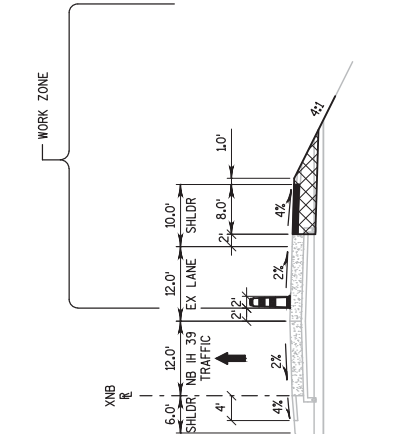
Addendum No. 01
 ID 1007-10-84
 Revised Sheet 21
 April 26, 2017

KEYNOTE LEGEND: PLAN DETAIL

- AG01** BASE AGGREGATE DENSE 3/4-INCH
- AP24** 6.0-INCH HMA PAVEMENT
- FE01** FENCE WOVEN WIRE 4-FOOT
- MP02** REMOVING ASPHALTIC SURFACE MILLING, 2-FT WIDTH (4 HT 58-28 H, 2.25')
- RM03** REMOVING FENCE
- SW01** SAWING ASPHALT

NOTE: SEE GENERAL NOTES FOR HMA TYPE/LAYER DEPTHS



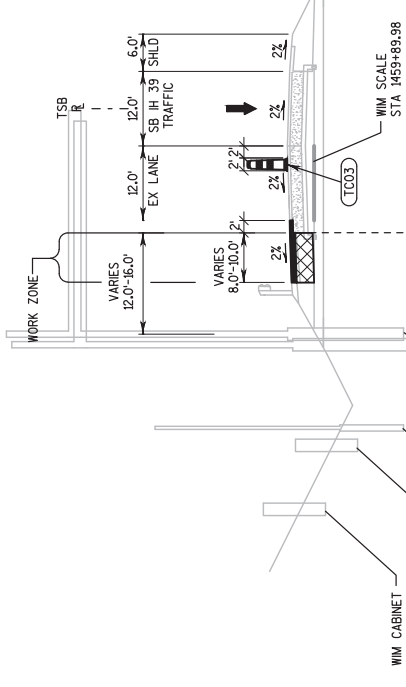


KEYED NOTE LEGEND

(TC03) TRAFFIC CONTROL DRUM (100' SPACING TYPICAL)

TYPICAL FINISHED SECTION - TRAFFIC CONTROL STAGE 1 - NIGHTTIME HOURS

STA 1438+13 'TSB' TO 1484+30 'TSB'
 STA 1020+93 'TSB' TO 1034+59 'XNB'



TYPICAL FINISHED SECTION - TRAFFIC CONTROL STAGE 1 - DAYTIME HOURS

STA 1438+13 'TSB' TO 1484+30 'TSB'
 STA 1020+93 'XNB' TO 1034+59 'XNB'

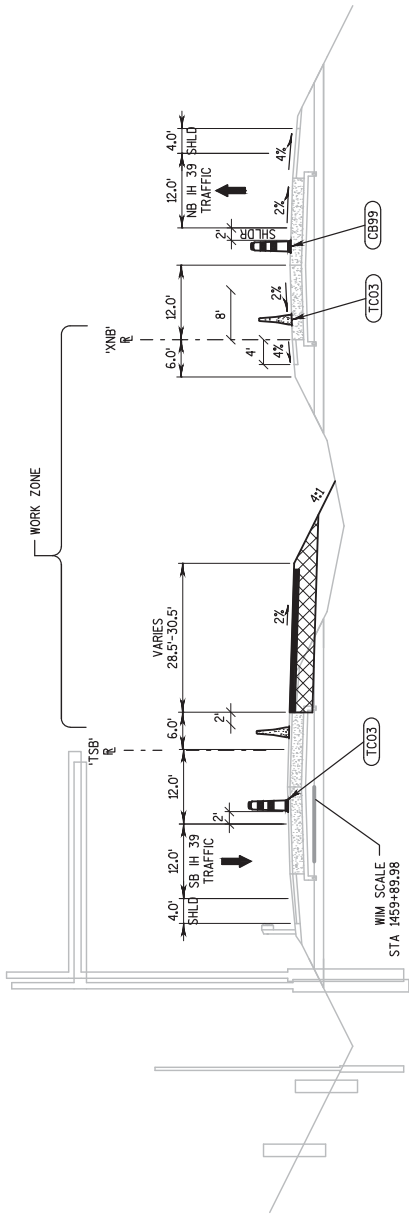
Addendum No. 01
 ID 1007-10-84
 Revised Sheet 88
 April 26, 2017

PROJECT NO: 1007-10-84
 COUNTY: DANE
 HWY: IH 39

TYPICAL SECTION (TRAFFIC CONTROL - STAGE 1)
 PLOT SCALE: 1" = 20'-XREF

FILE NAME: 026301-TC-TS (TRAF CNTRL TYP SEC).DWG
 PLOT DATE: 4/24/2017 1:29 PM
 PLOT BY: SEH INC LAYOUT NAME: STG 1 (3)

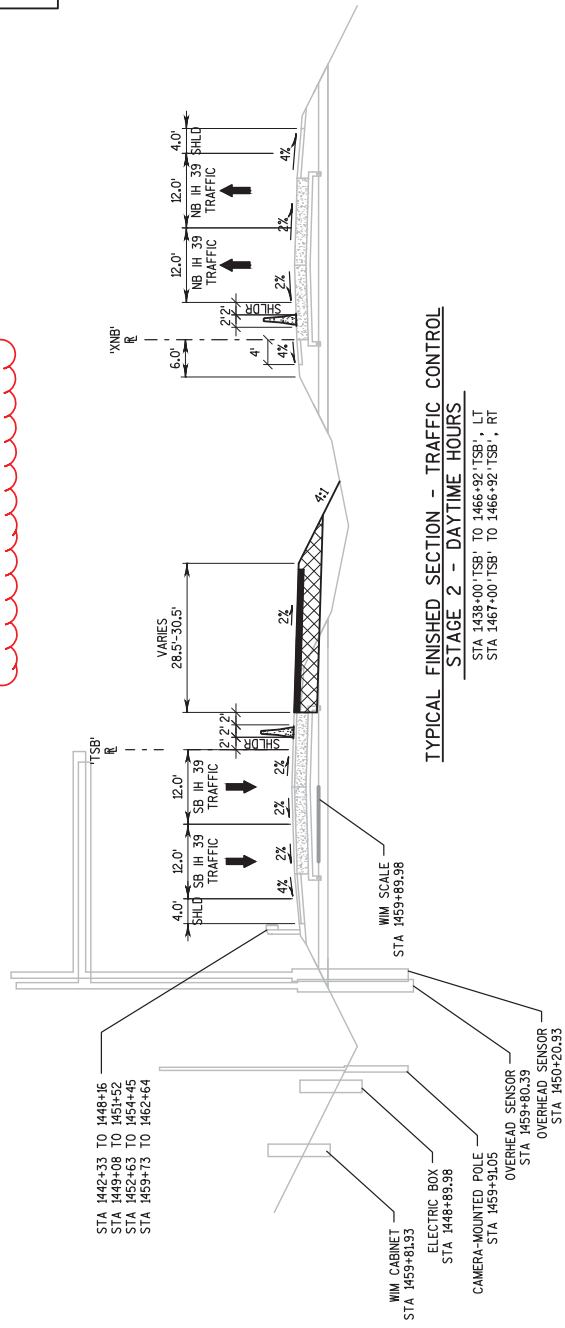
SAVE FOLDER PATH: P:\ME\DVAMEL\119189\CIVIL\30\10071001\SHEET\PLAN\10071084\SEC 02 TYPICAL SECTIONS & DETAILS\TRAFFIC CONTROL



TYPICAL FINISHED SECTION - TRAFFIC CONTROL

STAGE 2 - NIGHT TIME HOURS
 STA 1438+00 TSB, TO 1466+92 TSB, LT
 STA 1467+00 TSB TO 1466+92 TSB, RT

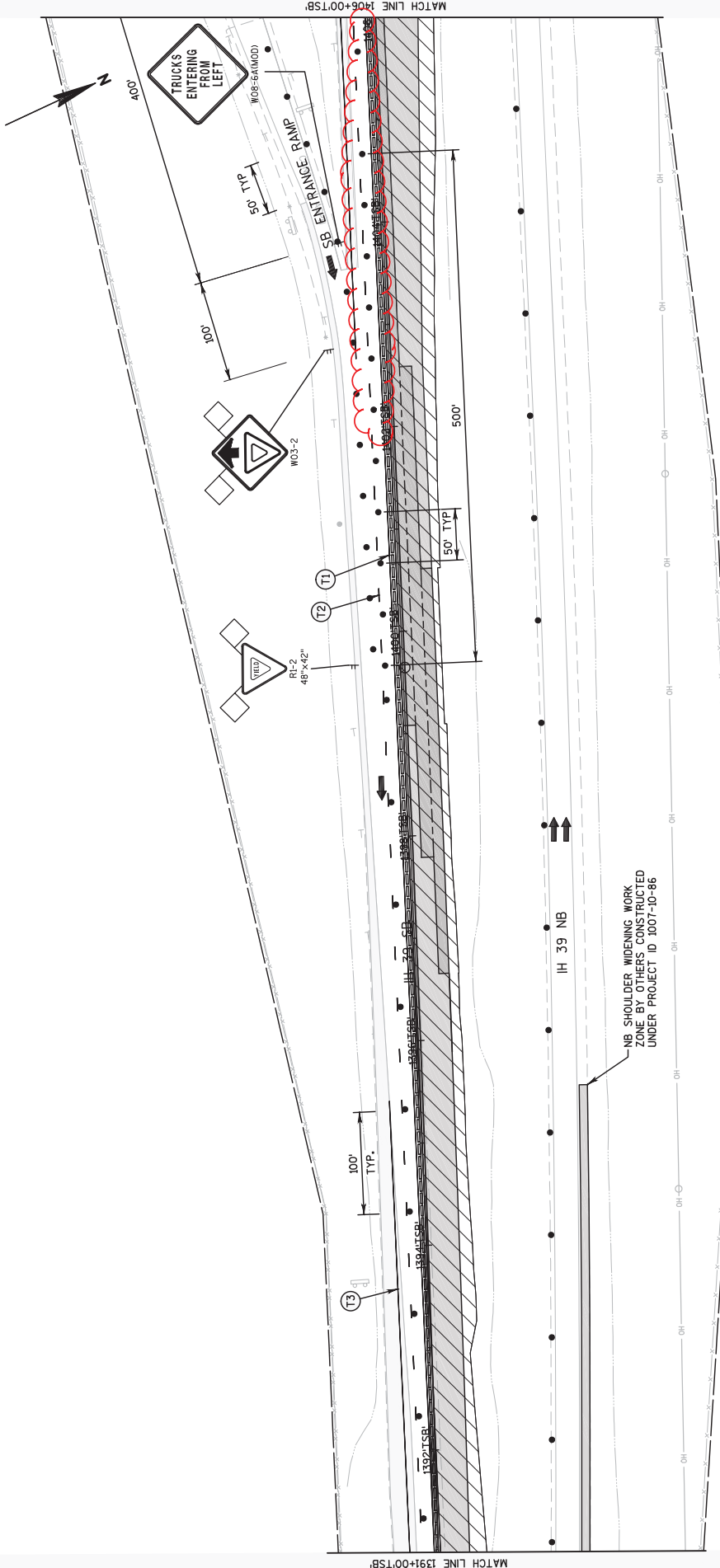
KEYED NOTE LEGEND
 (TC03) TRAFFIC CONTROL DRUM (100' SPACING TYPICAL)
 (CB99) CONCRETE BARRIER TEMPORARY PRECAST



TYPICAL FINISHED SECTION - TRAFFIC CONTROL

STAGE 2 - DAYTIME HOURS
 STA 1438+00 TSB, TO 1466+92 TSB, LT
 STA 1467+00 TSB TO 1466+92 TSB, RT

Addendum No. 01
 ID 1007-10-84
 Revised Sheet 105
 April 26, 2017



Addendum No. 01
 ID 1007-10-84
 Revised Sheet 114
 April 26, 2017

KEYNOTE LEGEND: PAVEMENT MARKING

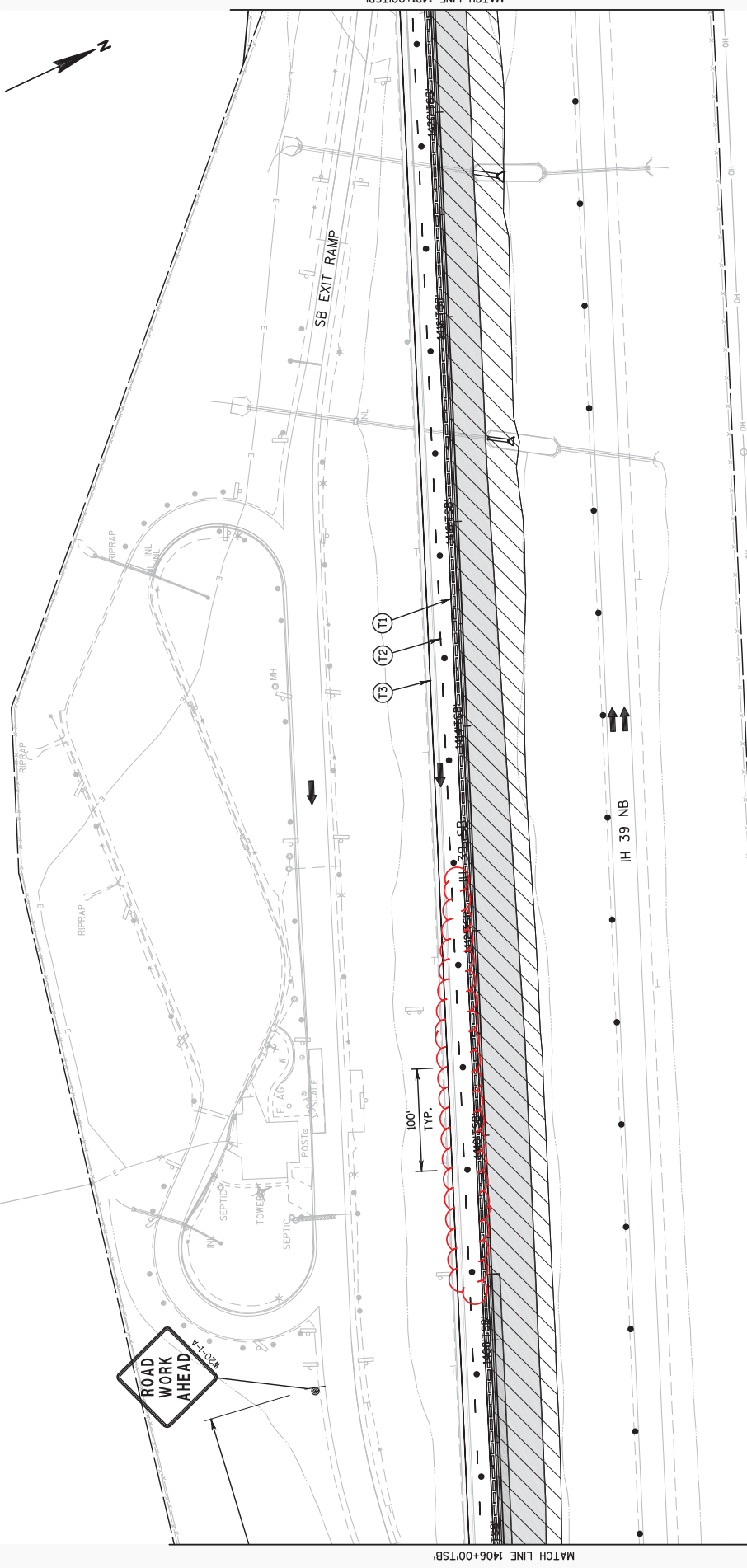
(T1)	TEMPORARY PAVEMENT MARKING PAINT 4-INCH (YELLOW)
(T2)	TEMPORARY PAVEMENT MARKING PAINT 4-INCH (WHITE)
(T3)	TEMPORARY PAVEMENT MARKING PAINT 4-INCH (WHITE) (12.5 FT. LINE, 37.5 FT. SKIP)

TRAFFIC CONTROL LEGEND

	TRAFFIC CONTROL DRUM
	TRAFFIC CONTROL DRUM WITH TYPE C STEADY BURN LIGHT
	FLASHING ARROW BOARD
	SIGN ON PERMANENT SUPPORT
	SIGN ON TEMPORARY SUPPORT, W/ A 5' MIN. MOUNTING HEIGHT
	CONC. BARRIER TEMP. PRECAST
	CRASH CUSHION TEMPORARY
	DIRECTION OF TRAFFIC
	PORTABLE CHANGEABLE MESSAGE BOARD
	WORK AREA
	TEMPORARY PAVEMENT

NB SHOULDER WIDENING WORK ZONE BY OTHERS CONSTRUCTED UNDER PROJECT ID 1007-10-86

IH 39 NB



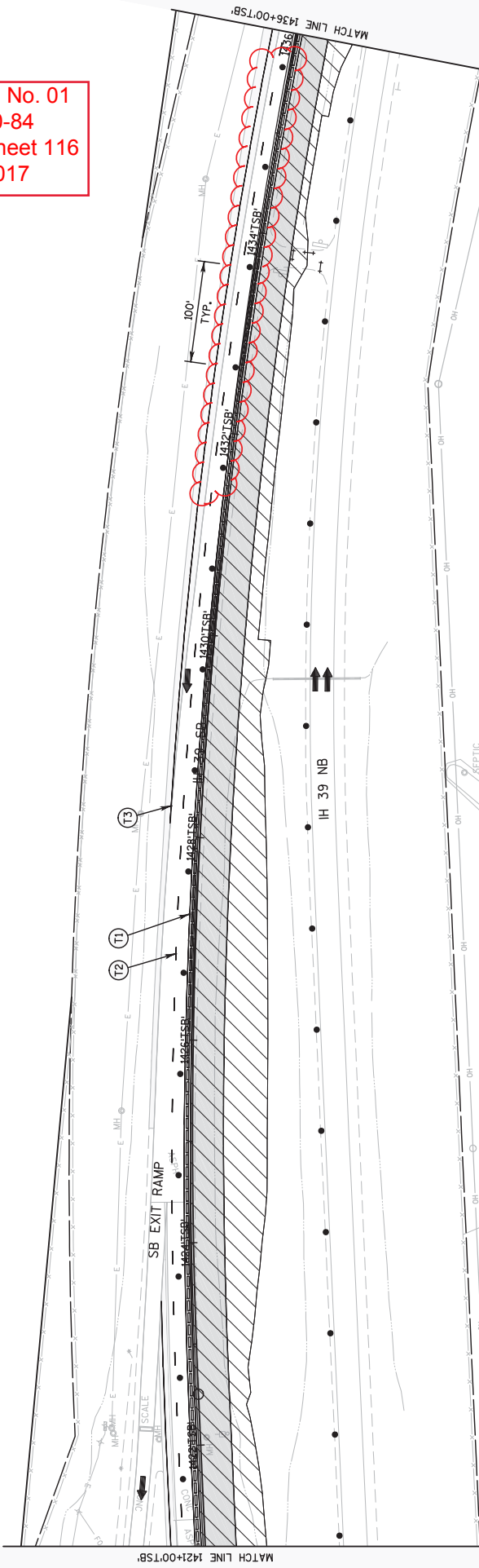
Addendum No. 01
 ID 1007-10-84
 Revised Sheet 115
 April 26, 2017

KEYNOTE LEGEND:	
(T1)	TEMPORARY PAVEMENT MARKING PAINT 4-INCH (YELLOW)
(T2)	TEMPORARY PAVEMENT MARKING PAINT 4-INCH (WHITE)
(T3)	TEMPORARY PAVEMENT MARKING PAINT 4-INCH (WHITE) (2.5 FT LINE 37.5 FT SKIP)

TRAFFIC CONTROL LEGEND	
	TRAFFIC CONTROL DRUM
	TRAFFIC CONTROL DRUM WITH TYPE C STEADY BURN LIGHT
	FLASHING ARROW BOARD
	SIGN ON PERMANENT SUPPORT
	SIGN ON TEMPORARY SUPPORT, W/ A 5' MIN. MOUNTING HEIGHT
	CONC. BARRIER TEMP. PRECAST
	CRASH CUSHION TEMPORARY
	DIRECTION OF TRAFFIC
	PORTABLE CHANGEABLE MESSAGE BOARD
	WORK AREA
	TEMPORARY PAVEMENT



Addendum No. 01
ID 1007-10-84
Revised Sheet 116
April 26, 2017

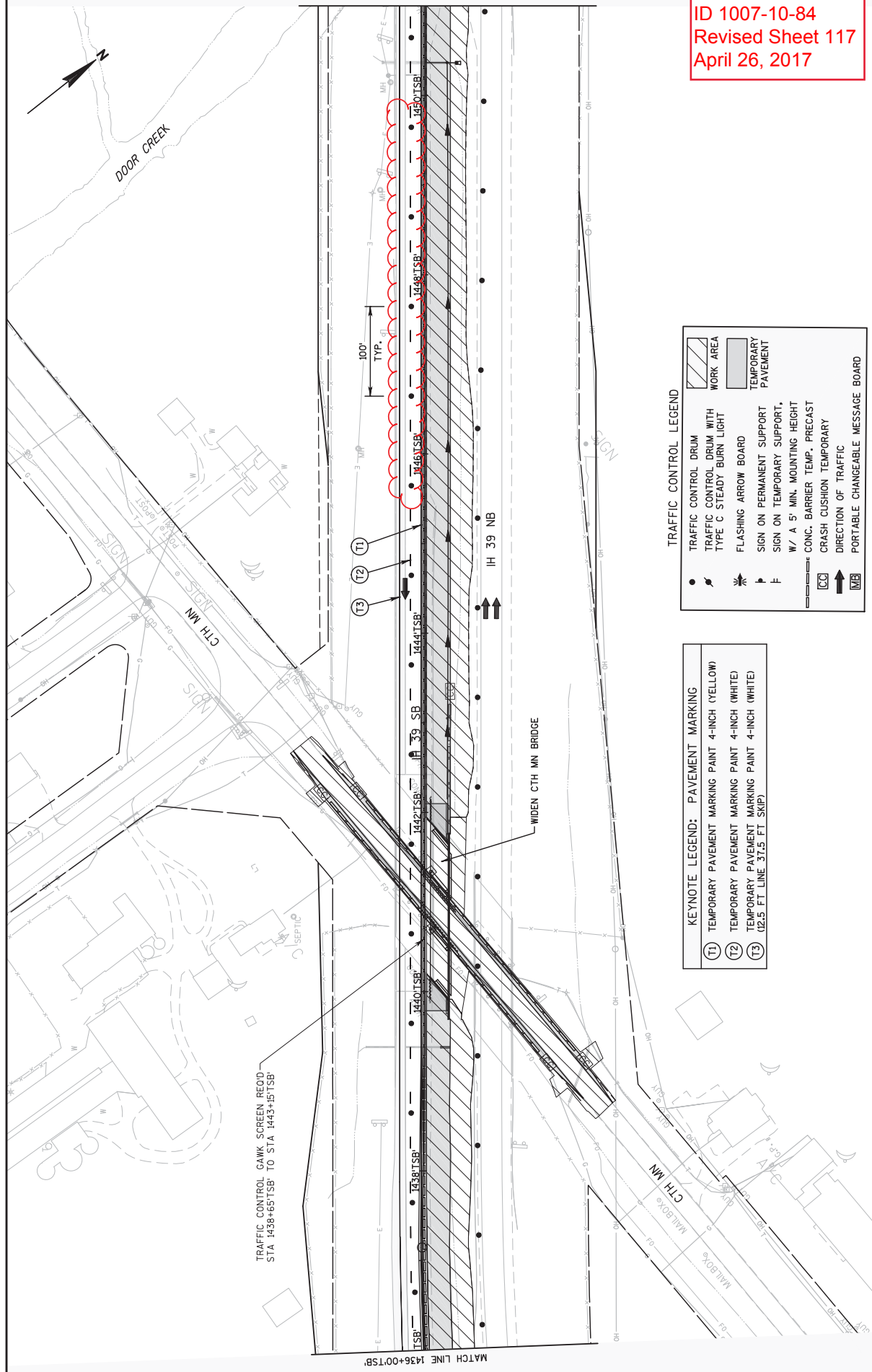


KEYNOTE LEGEND: PAVEMENT MARKING

(T1)	TEMPORARY PAVEMENT MARKING PAINT 4-INCH (YELLOW)
(T2)	TEMPORARY PAVEMENT MARKING PAINT 4-INCH (WHITE)
(T3)	TEMPORARY PAVEMENT MARKING PAINT 4-INCH (WHITE) (2.5 FT LINE 37.5 FT SKIP)

TRAFFIC CONTROL LEGEND

	WORK AREA
	TRAFFIC CONTROL DRUM WITH TYPE C STEADY BURN LIGHT
	FLASHING ARROW BOARD
	SIGN ON PERMANENT SUPPORT
	SIGN ON TEMPORARY SUPPORT, W/ A 5' MIN. MOUNTING HEIGHT
	CONC. BARRIER TEMP. PRECAST CRASH CUSHION TEMPORARY
	DIRECTION OF TRAFFIC
	PORTABLE CHANGEABLE MESSAGE BOARD



Addendum No. 01
 ID 1007-10-84
 Revised Sheet 117
 April 26, 2017

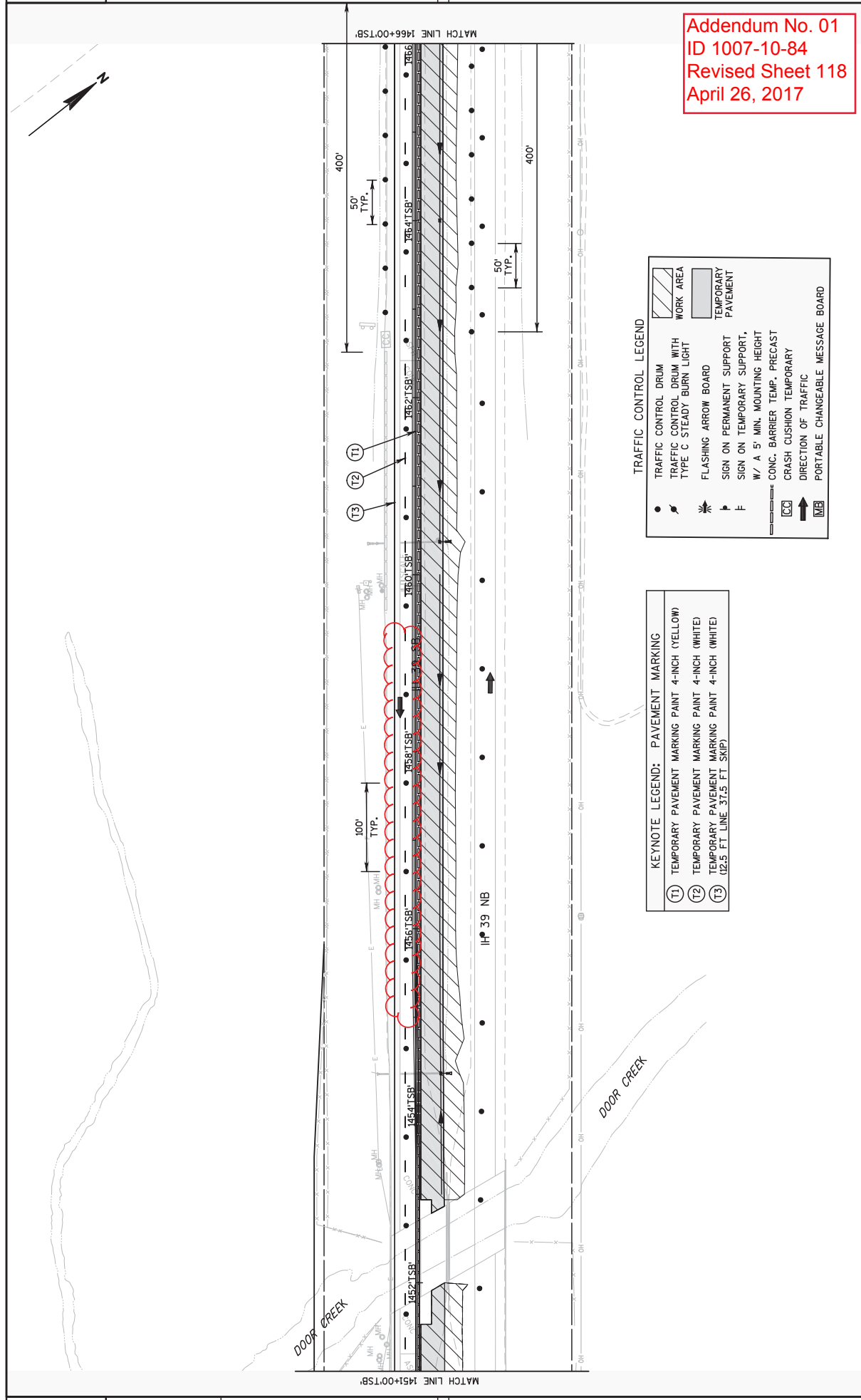
TRAFFIC CONTROL LEGEND

	TRAFFIC CONTROL DRUM
	TRAFFIC CONTROL DRUM WITH TYPE C STEADY BURN LIGHT
	FLASHING ARROW BOARD
	SIGN ON PERMANENT SUPPORT
	SIGN ON TEMPORARY SUPPORT, W/ A 5' MIN. MOUNTING HEIGHT
	CONC. BARRIER TEMP. PRECAST
	CRASH CUSHION TEMPORARY
	DIRECTION OF TRAFFIC
	PORTABLE CHANGEABLE MESSAGE BOARD

KEYNOTE LEGEND: PAVEMENT MARKING

	TEMPORARY PAVEMENT MARKING PAINT 4-INCH (YELLOW)
	TEMPORARY PAVEMENT MARKING PAINT 4-INCH (WHITE)
	TEMPORARY PAVEMENT MARKING PAINT 4-INCH (WHITE) (22.5 FT LINE 37.5 FT SKIP)

TRAFFIC CONTROL CANK SCREEN RECD - STA 1438+65 TSB TO STA 1443+15 TSB



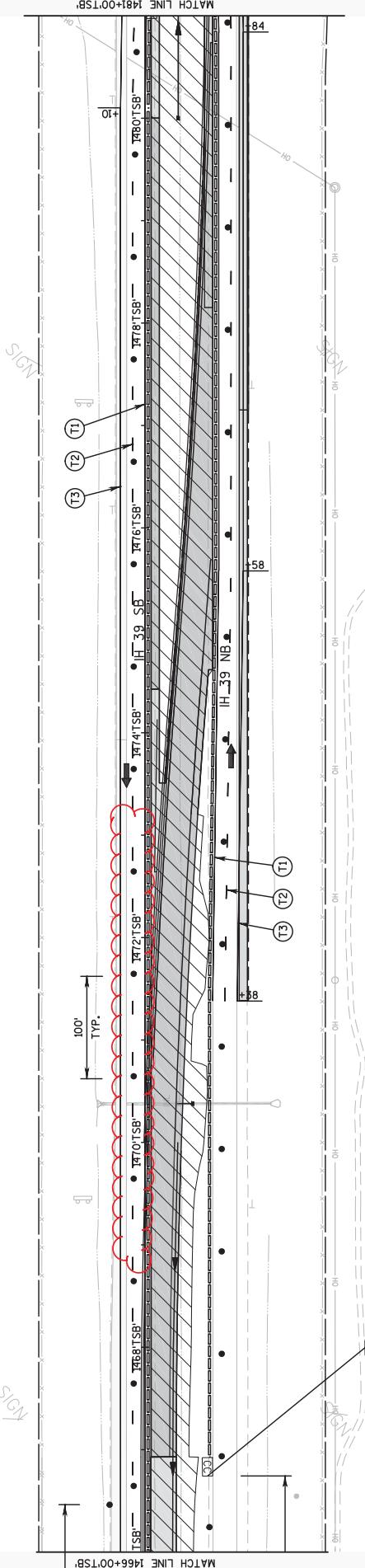
Addendum No. 01
 ID 1007-10-84
 Revised Sheet 118
 April 26, 2017

TRAFFIC CONTROL LEGEND

	TRAFFIC CONTROL DRUM
	TRAFFIC CONTROL DRUM WITH TYPE C STEADY BURN LIGHT
	FLASHING ARROW BOARD
	SIGN ON PERMANENT SUPPORT
	SIGN ON TEMPORARY SUPPORT, W/ A 5' MIN. MOUNTING HEIGHT
	CONC. BARRIER TEMP. PRECAST
	CRASH CUSHION TEMPORARY
	DIRECTION OF TRAFFIC
	PORTABLE CHANGEABLE MESSAGE BOARD

KEYNOTE LEGEND: PAVEMENT MARKING

	TEMPORARY PAVEMENT MARKING PAINT 4-INCH (YELLOW)
	TEMPORARY PAVEMENT MARKING PAINT 4-INCH (WHITE)
	TEMPORARY PAVEMENT MARKING PAINT 4-INCH (WHITE) (2.5 FT LINE 37.5 FT SKIP)



Addendum No. 01
 ID 1007-10-84
 Revised Sheet 119
 April 26, 2017

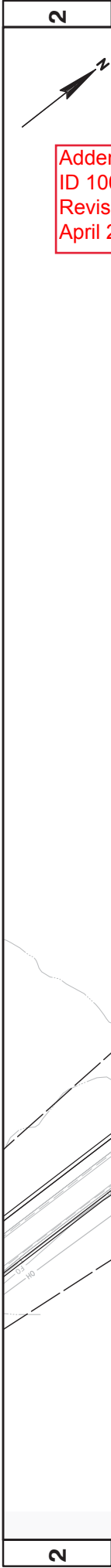
TRAFFIC CONTROL LEGEND

	TRAFFIC CONTROL DRUM
	TRAFFIC CONTROL DRUM WITH TYPE C STEADY BURN LIGHT
	FLASHING ARROW BOARD
	SIGN ON PERMANENT SUPPORT
	SIGN ON TEMPORARY SUPPORT
	W/ A 5' MIN. MOUNTING HEIGHT
	CONC. BARRIER TEMP. PRECAST
	CRASH CUSHION TEMPORARY
	DIRECTION OF TRAFFIC
	PORTABLE CHANGEABLE MESSAGE BOARD

KEYNOTE LEGEND: PAVEMENT MARKING

	TEMPORARY PAVEMENT MARKING PAINT 4-INCH (YELLOW)
	TEMPORARY PAVEMENT MARKING PAINT 4-INCH (WHITE)
	TEMPORARY PAVEMENT MARKING PAINT 4-INCH (WHITE) (2.5 FT LINE 37.5 FT SKIP)

Addendum No. 01
 ID 1007-10-84
 Revised Sheet 120
 April 26, 2017



SAVE FOLDER PATH: P:\V\DWANE\1319\9\CIVIL_3D\10071001\SHEETS\PLAN\10071084\SEC 02 TYPICAL SECTIONS & DETAILS\TRAFFIC CONTROL

KEYNOTE LEGEND: PAVEMENT MARKING

(T1)	TEMPORARY PAVEMENT MARKING PAINT 4-INCH (YELLOW)
(T2)	TEMPORARY PAVEMENT MARKING PAINT 4-INCH (WHITE)
(T3)	TEMPORARY PAVEMENT MARKING PAINT 4-INCH (WHITE) (2.5 FT. LINE 37.5 FT. SKIP)

TRAFFIC CONTROL LEGEND

	TRAFFIC CONTROL DRUM WITH TYPE C STEADY BURN LIGHT
	FLASHING ARROW BOARD
	SIGN ON PERMANENT SUPPORT, W/ A 5' MIN. MOUNTING HEIGHT
	SIGN ON TEMPORARY SUPPORT, CONC. BARRIER TEMP. PRECAST
	CRASH CUSHION TEMPORARY
	DIRECTION OF TRAFFIC
	PORTABLE CHANGEABLE MESSAGE BOARD
	WORK AREA
	TEMPORARY PAVEMENT

Addendum No. 01
ID 1007-10-84
Revised Sheet 133
April 26, 2017

EARTHWORK SUMMARY

CATEGORY	STAGE	LOCATION	STATION - STATION	CUT (2) (CY)	EXCAVATION (3) (CY)	ROCK EXCAVATION (CY)	MARSH EXCAVATION (CY)	FILL (CY)	208.1100 SELECT BORROW (6) (CY)	645.0220 GEGRID TYPE SR (SY)	SPV.0035.001 ROADWAY EMBANKMENT(4) (CY)	MASS ORDINATE +/- (5) (CY)	COMMENTS
1000	1	BEGIN STAGE - PROJECT 1007-10-84	1246+00'TSB' - 1309+26'TSB'	4565				329			329	4236	
		PROJECT 1007-10-86 - CTH MN	1369+30'TSB' - 1439+91'TSB'	6096				10143			10143	-4047	
		CTH MN - DOOR CREEK	1442+42'TSB' - 1451+65'TSB'	538				0			0	538	
		DOOR CREEK - END STAGE	1452+86'TSB' - 1484+30'TSB'	3377			680	715	680	930	715	2662	
		IH 39 NB OUTSIDE SHOULDER	1029+93'XNB' - 1034+59'SNB'	1208				79			79	1129	
		STAGE SUBTOTALS		15794	0	0	680	11286	680	930	11286	4518	
	2	BEGIN STAGE - PROJECT 1007-10-86	1246+00'TSB' - 1309+26'TSB'	14599	669	15462		19324	669	3200	19324	-4725	
		PROJECT 1007-10-86 - CTH MN	1369+30'TSB' - 1439+91'TSB'	9324	535			10437	535	3600	10437	-1153	
		CTH MN - DOOR CREEK	1442+42'TSB' - 1451+65'TSB'	1280				55			55	1225	
		DOOR CREEK - END STAGE	1452+86'TSB' - 1484+30'TSB'	1557				747			747	810	
		CROSSOVER 2x76	1466+92+276 - 1468+88+276	2646				528			528	2121	
		CTH MN	47+72'XNB' - 52+82'XNB'	253				12			12	281	
		STAGE SUBTOTALS		29662	1204	15462	0	31103	1204	6600	31103	-1441	
		UNDISTRIBUTED		45446	12004	15462	680	42369	12884	18530	42369	6154	
		PROJECT TOTALS		45446	12004	15462	680	42369	12884	18530	42369		

- 1) EXCAVATION COMMON = CUT + EBS EXCAVATION. ITEM NUMBER 205 0100.
- 2) CUT VOLUME INCLUDES CONCRETE AND ASPHALTIC SURFACE MATERIAL.
- 3) EBS EXCAVATION TO BE BACKFILLED WITH SELECT BORROW UNLESS OTHERWISE NOTED IN THE PLANS.
- 4) EXCAVATION MARSH TO BE BACKFILLED WITH SELECT BORROW IN AREAS OF WATER AS STATED IN NOTE 6. AREAS OF MARSH EXCAVATION NOT REQUIRED TO BE FILLED WITH SELECT BORROW TO BE BACKFILLED WITH EMBANKMENT.
- 5) THE MASS ORDINATE IS CALCULATED BY DIVISION. A POSITIVE QUANTITY INDICATES AN EXCESS OF MATERIAL WITHIN THE DIVISION AND A NEGATIVE QUANTITY INDICATES A SHORTAGE OF MATERIAL WITHIN THE DIVISION. STRUCTURE EXCAVATION IS NOT INCLUDED IN THIS CALCULATION.
- 6) WHERE WATER IS ENCOUNTERED DURING MARSH EXCAVATION, PLACE SELECT BORROW TO AN ELEVATION 2 FEET ABOVE THE WATER LINE.

BASE AGGREGATE ITEMS

CATEGORY	STAGE	STATION	LOCATION	305.0120 DENSE 3/4-INCH BASE AGGREGATE (TON)	*312.0110 SELECT CRUSHED MATERIAL (MGAL)	624.0100 WATER (MGAL)
1000	1	1246+00 TSB' - 1306+26 TSB'	LT	7754	-	79
		1369+30 TSB' - 1404+23 TSB'	LT	9113	-	93
		1403+56 TSB' - 1412+95 TSB'	LT	1376	-	14
		1425+13 TSB' - 1440+00 TSB'	LT	1428	-	14
		1424+42 TSB' - 1451+70 TSB'	LT	793	-	8
		1424+53 TSB' - 1484+30 TSB'	LT	5,469	-	57
		STAGE SUBTOTAL		25,963	0	267
1000	2	1246+00 TSB' - 1250+61 TSB'	MEDIAN	868	-	9
		1248+44 TSB' - 1256+36 TSB'	CONC MEDIAN	15,204	-	155
		1289+57 TSB' - 1305+04 TSB'	MEDIAN	1,783	4,245	18
		1305+04 TSB' - 1308+26 TSB'	CONC MEDIAN	4,948	-	46
		1308+26 TSB' - 1318+05 TSB'	MEDIAN	2,729	503	17
		1325+34 TSB' - 1381+05 TSB'	CONC MEDIAN	7,022	2,004	8
		1386+65 TSB' - 1408+65 TSB'	MEDIAN	3,401	-	34
		1441+65 TSB' - 1452+00 TSB'	MEDIAN	5,425	-	54
		1452+78 TSB' - 1475+68 TSB'	CONC CROSSOVER	965	2,412	10
		1474+94 TSB' - 1482+68 TSB'	MEDIAN CROSSOVER	905	-	9
		1482+68 TSB' - 1484+30 TSB'	MEDIAN	1,489	-	15
		47+62 MIN - 52+92 MIN	CRIMAN	482	-	5
		STAGE SUBTOTAL		55,327	9,164	587
		UNDISTRIBUTED		84,291	9,164	1,045
		CATEGORY 1000 SUBTOTAL		149,618	18,328	2,132
		PROJECT TOTAL		149,618	18,328	2,132

*ADDITIONAL QUANTITIES SHOWN ELSEWHERE IN PLANS
 ** WATER CONVERSION IS 1 MGAL/100 TON OF BASE AGGREGATE DENSE MATERIAL USE WATER FOR BASE COMPACTION AND DUST CONTROL

CONCRETE PAVEMENT

CATEGORY	STAGE	STATION	10-INCH DRILLED TE BARS EACH	415.0100 CONCRETE SLAB APPROACH SY
1000	2	1396+57 TSB' - 1395+04 TSB'	5,028	-
		1375+34 TSB' - 1381+05 TSB'	596	190
		1386+65 TSB' - 1408+65 TSB'	2,373	319
		B-13+140	14	10
		1466+93 TSB' - 1480+00 TSB'	3,352	483
		CATEGORY 1000 SUBTOTALS	11,362	1,518
		PROJECT TOTALS	11,362	1,518

Addendum No. 01
 ID 1007-10-84
 Revised Sheet 134
 April 26, 2017

ASPHALTIC PAVEMENT ITEMS

CATEGORY	STAGE	STATION	LOCATION	204.0120 REMOVING ASPHALTIC SURFING MILLING (SY)	460.5224 HMA PAVEMENT 3 1/2 INCHES S 4 1/2 INCHES S (TON)	460.5224 HMA PAVEMENT 3 1/2 INCHES S 4 1/2 INCHES S (TON)	460.5224 HMA PAVEMENT 3 1/2 INCHES S 4 1/2 INCHES S (TON)	460.7424 HMA PAVEMENT 4 HTS 28 H (TON)	459.4000 SPV 0060.001 HMA COLD FILL EXISTING PAVEMENT WEATHER RUMBLE STRIPS (CY)
1000	1	1246+00 TSB' - 1306+26 TSB'	LT	-	-	-	-	1,395	-
		1246+00 TSB' - 1306+26 TSB'	RT	1,385	-	-	-	1,012	-
		1389+30 TSB' - 1404+23 TSB'	LT	530	-	-	-	1,601	-
		1403+56 TSB' - 1424+64 TSB'	LT	208	-	-	-	1,027	-
		1425+13 TSB' - 1440+00 TSB'	LT	332	-	-	-	371	257
		1424+42 TSB' - 1451+71 TSB'	LT	206	-	-	-	317	-
		1442+53 TSB' - 1451+71 TSB'	LT	688	-	-	-	176	-
		1452+78 TSB' - 1484+30 TSB'	LT	688	-	-	-	832	-
		1452+78 TSB' - 1484+30 TSB'	RT	-	-	-	-	559	-
		STAGE SUBTOTAL		3,300	1,283	0	0	4,693	3,224
1000		1246+00 TSB' - 1306+26 TSB'	RT	-	-	-	-	3,244	811
		1389+30 TSB' - 1404+23 TSB'	RT	772	-	-	-	1,946	467
		1403+56 TSB' - 1424+64 TSB'	RT	951	-	-	-	3,943	689
		1441+65 TSB' - 1451+71 TSB'	RT	-	-	-	-	2,366	359
		1452+78 TSB' - 1466+93 TSB'	RT	-	-	-	-	604	91
		1466+93 TSB' - 1482+68 TSB'	RT	-	-	-	-	820	205
		1482+68 TSB' - 1484+30 TSB'	RT	-	-	-	-	492	123
		IH 38 SB CROSSOVER		-	-	-	-	-	-
		1466+93 TSB' - 1482+68 TSB'	IH 38 SB CROSSOVER	-	-	-	-	222	55
		1482+68 TSB' - 1484+30 TSB'	IH 38 SB CROSSOVER	-	-	-	-	177	44
		IH 38 NB SHOULDER		-	-	-	-	-	-
		1020+83 2XNB - 1034+65 2XNB	IH 38 NB SHOULDER	-	-	-	-	255	38
		47+62 MIN - 52+92 MIN	CTH MIN	-	-	-	-	153	23
		47+62 MIN - 52+92 MIN	CTH MIN	-	-	-	-	33	19
		STAGE SUBTOTAL		0	2,235	94	75	222	8,916
		CATEGORY 1000 SUBTOTAL		3,300	3,519	94	75	222	13,609
		PROJECT TOTAL		3,300	3,519	94	75	222	13,609

DELINEATORS/FLEXIBLE TUBULAR MARKERS

PROJECT NUMBER	CATEGORY	STAGE	LOCATION	STATION	643.0900 TRAFFIC CONTROL FLEXIBLE DELINEATOR TUBULAR MARKER TEMPORARY POSTS, BASES (EACH)	643.0900 TRAFFIC CONTROL FLEXIBLE DELINEATOR TUBULAR MARKER TEMPORARY POSTS, BASES (EACH)
1007-10-84	1000		CROSSOVER X276	8	110	110
PROJECT TOTALS					8	110

REMOVING PAVEMENT MARKINGS

CATEGORY	STAGE	STATION	LOCATION	12.5' SKIPS WHITE (LF)	12.5' SKIPS YELLOW (LF)	12.5' SKIPS WHITE (LF)
1000	2	1289+00 TSB' - 1310+00 TSB'		2700	675	
		1389+30 TSB' - 1485+00 TSB'		11600	2975	
		1021+00 XNB' - 1034+50 XNB'		1350	350	
STAGE SUBTOTAL				15650	3900	35000
PROJECT TOTAL				35,225		

*ADDITIONAL QUANTITIES SHOWN ELSEWHERE

TEST PITS

PROJECT NUMBER	CATEGORY	LOCATION	STATION	312.0110 SELECT CRUSHED MATERIAL (TON)
1007-10-84	1000	UNDISTRIBUTED	14	28
PROJECT TOTALS				28

*ADDITIONAL QUANTITIES SHOWN ELSEWHERE IN PLANS

REMOVE ITS EQUIPMENT

PROJECT NUMBER	CATEGORY	STATION	LOCATION	SPV.0105.401 LS
1007-10-84	1200	1422+11 TSB'	RT	1

PROJECT NO: 1007-10-84

HWY: IH 39

COUNTY: DANE

FILE NAME : P:\MS\00MEL\119189\CTVIL 30\10071001\SHEETS\PLAN\0071084\SEC 03 MISCELLANEOUS QTY\030200.MXD

PLOT DATE : 4/21/2017 8:05 AM

PLOT BY : SEH INC

LAYOUT NAME : 08

PLOT SCALE : NIS

MISCELLANEOUS QUANTITIES

SHEET 139

E

WISDOT/CADDIS SHEET 42

TEMPORARY PAVEMENT MARKING

CATEGORY	STAGE	STATION	LOCATION	646.0402 PAINT 4-INCH (TRAFFIC CONTROL STAGING)		646.0403 EPOXY 4-INCH EDGE LINE 12.5' SKIPS		646.0803 EPOXY 8-INCH EDGE LINE 12.5' SKIPS		REMARKS
				WHITE (LF)	YELLOW (LF)	WHITE (LF)	YELLOW (LF)	WHITE (LF)	YELLOW (LF)	
1000	2	1289+00 TSB' - 1310+00 TSB'	SB IH 39	2700	675	-	-	-	-	
		1389+30 TSB' - 1485+00 TSB'	SB IH 39	11500	2875	-	-	-	-	
		1021+00 XNB' - 1034+50 XNB'	NB IH 39	1350	350	-	-	-	-	
STAGE SUBTOTAL				15650	3900	0	0	0	0	35000
CATEGORY 1000 SUBTOTAL				35000		6400	675	11500	2875	50
PROJECT TOTAL				35000		42400	42400	50	50	35000

*ADDITIONAL QUANTITIES SHOWN ELSEWHERE

SAWING PAVEMENT

CATEGORY	STAGE	STATION	LOCATION	690.0150 SAWING ASPHALT (LF)	690.0250 SAWING CONCRETE (LF)	REMARKS
1000	1	1389+16 TSB' - 1404+23 TSB'	LT	1116	-	
		1473+63 TSB' - 1484+30 TSB'	LT	1047	-	
STAGE SUBTOTAL				2163	0	
CATEGORY 1000 SUBTOTAL				2163	0	
PROJECT TOTAL				22461	168	

Addendum No. 01
ID 1007-10-84
Revised Sheet 139
April 26, 2017

Addendum No. 01
 ID 1007-10-84
 Revised Sheet 248
 April 26, 2017

STATE PROJECT NUMBER
1007-10-84

LIST OF DRAWINGS

1. GENERAL PLAN
2. TYPICAL SECTIONS
3. ESTIMATED QUANTITIES AND NOTES
4. SOUTH ABUTMENT
5. SOUTH ABUTMENT WING 1 DETAILS
6. SOUTH ABUTMENT WING 2 DETAILS
7. NORTH ABUTMENT
8. NORTH ABUTMENT WING 1 DETAILS
9. NORTH ABUTMENT WING 2 DETAILS
10. PIER 1 & 2
11. LAMINATED ELASTOMERIC BEARINGS
12. COMPRESSION SEAL JOINT DETAILS AT NORTH ABUTMENT
13. STRIP SEAL EXPANSION JOINT DETAILS AT SOUTH ABUTMENT
14. STRIP SEAL EXPANSION JOINT DETAILS AT SOUTH ABUTMENT
15. PRESTRESSED GIRDER DETAILS
16. DECK ELEVATIONS AND TABLE OF DEFLECTIONS
17. SUPERSTRUCTURE PLAN AND BILL OF MATERIALS
18. SUPERSTRUCTURE DETAILS
19. SINGLE SLOPE PARAPET 42SS
20. SLOPE PAVING CRUSHED AGGREGATE

TRAFFIC DATA:
 AVERAGE DAILY TRAFFIC (ADT) 56,650 (2020)
 I-39 56,000 (2022)
 R.D.S. 2,265 (2019)
 CTH MN 2,960 (2039)
 R.D.S. 60 MPH

**FOR DESIGN DATA
 SEE SHEET 2**

WISDOT BRIDGE OFFICE CONTACT:
 WILLIAM DREHER, PE
 608.266.8489

OTIE CONTACT:
 JAMES HALL, PE, SE
 608.241.6717

NO.	DATE	REVISION	BY
1	4/17/2017	NOTCH FOR GAS MAIN	JUH

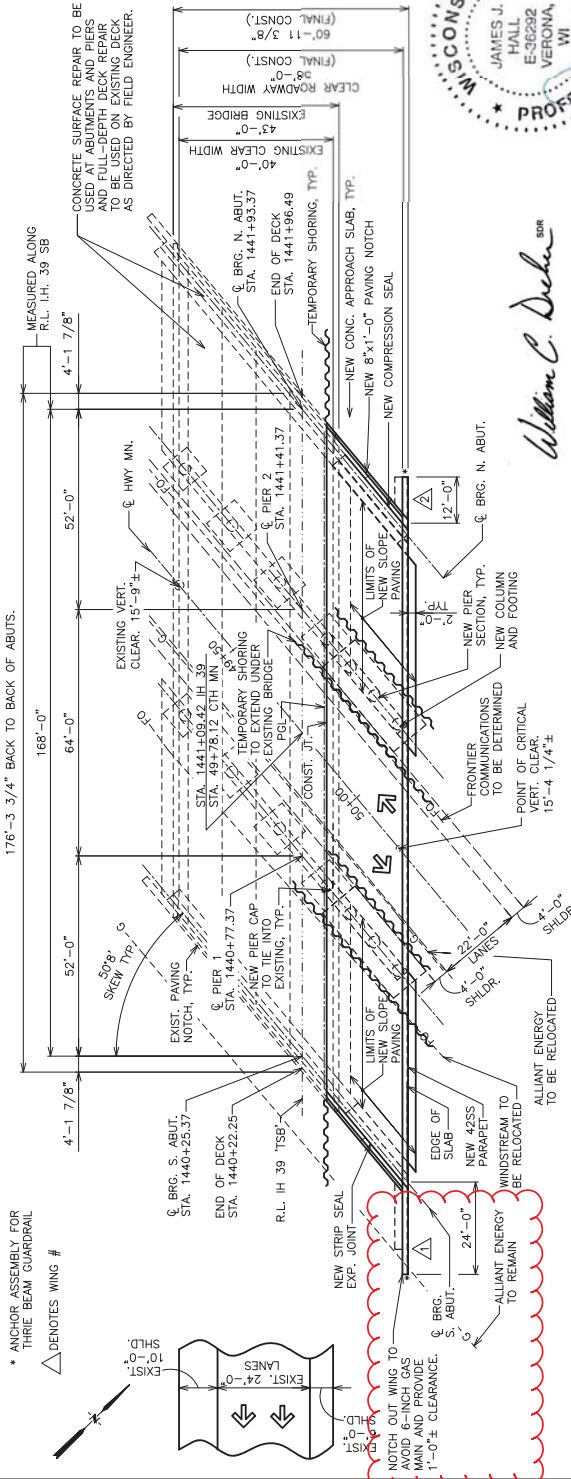


PLANS PREPARED BY
 5100 Eastpark Blvd
 Suite 300
 Madison, WI 53718
 www.otie.com

STATE OF WISCONSIN
 DEPARTMENT OF TRANSPORTATION
 ACCEPTED
 CHIEF STRUCTURES DESIGN ENGINEER DATE
STRUCTURE B-13-140

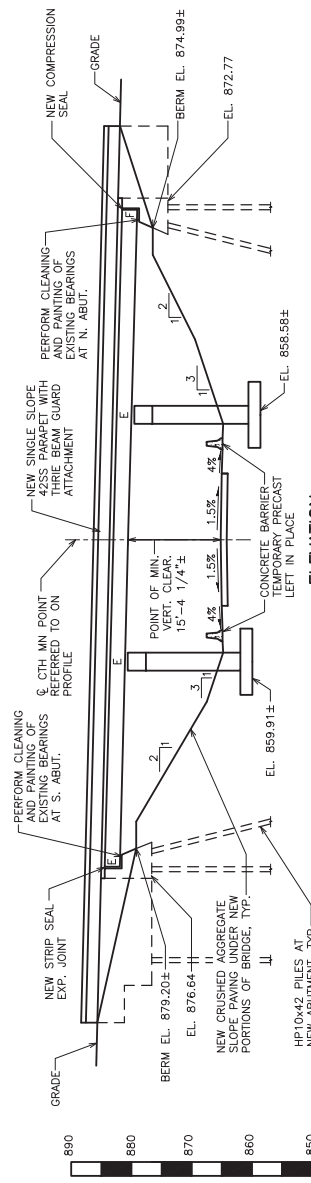
COUNTY	DESIGN SERIC	DESIGNER	DATE
I.H. 39 SB OVER C.T.H. MN	DANE	TOWN/SHRUBOAKE PLEASANT SPRINGS	

GENERAL PLAN
 SHEET 1 OF 23
 248



William C. Decker
 04/20/17

PLAN B-13-140
 (THREE SPAN STEEL & 28-INCH PRESTRESSED GIRDER BRIDGE)



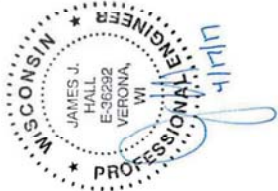
ELEVATION
 (NORMAL TO CTH MN)

STATION	OFFSET	DESCRIPTION	ELEV.
STA. 2386+58	+78.61	SET CHISELED 'X' ON NE BOLT OF SB LANES APPROX. 280 FT S. OF CTH MN OVERPASS.	886.87

STATION	ELEVATION
EL. 871.81	
STA. 52+00.00	
EL. 870.07	
STA. 51+50.00	
EL. 868.56	
STA. 51+00.00	
EL. 867.17	
STA. 50+50.00	
EL. 865.89	
STA. 50+00.00	
EL. 864.68	
STA. 49+50.00	
EL. 863.64	
STA. 49+00.00	
EL. 862.90	
STA. 48+50.00	
EL. 862.05	
STA. 48+00.00	
EL. 861.20	
STA. 47+50.00	

PROFILE GRADE CTH MN
 (BASED ON SURVEY)

PROFILE GRADE I.H. 39
 (BASED ON SURVEY. OFFSET 5'-8" RIGHT OF RL I.H. 39 'TSB')



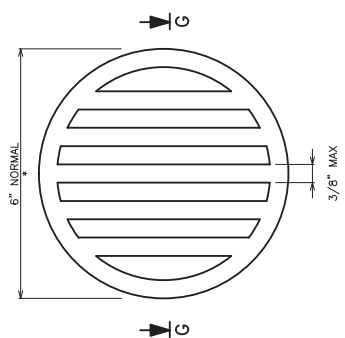
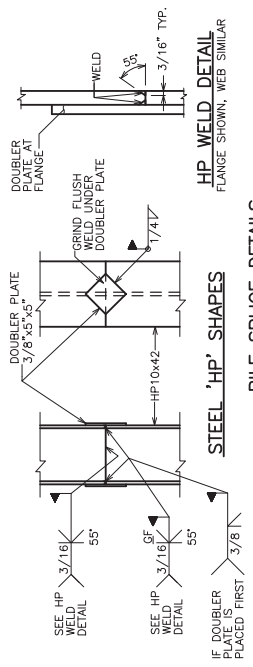
SHEETS 10-12

TOTAL ESTIMATED QUANTITIES

BID ITEM NUMBER	BID ITEM DESCRIPTION	UNIT	SOUTH ABUT.	PIER 1	PIER 2	NORTH ABUT.	SUPER STRUCT. TOTALS
203.0200	REMOVING OLD STRUCTURE STA. 1441 TSB+09.42	LS	---	---	---	---	1
206.1000	EXCAVATION FOR STRUCTURES BRIDGES B-13-140	LS	---	---	---	---	1
210.1500	BACKFILL STRUCTURE TYPE A	TON	140	---	---	180	320
502.0100	CONCRETE JOINT BRIDGES	CT	47.8	53.7	53.7	44.4	137.0
502.2000	PREPARED ELASTOMERIC 2" 1/2-INCH	LF	---	---	---	33	33
502.3100	EXPANSION DEVICE B-13-140	LS	1	---	---	---	1
502.3200	PROTECTIVE SURFACE TREATMENT	SY	---	---	---	380	380
502.3210	PIGMENTED SURFACE SEALER	SY	---	---	---	110	110
502.4204	ADHESIVE ANCHORS NO. 4 BAR	EA	8	16	16	6	46
502.4205	ADHESIVE ANCHORS NO. 5 BAR	EA	3	---	---	3	6
502.4206	ADHESIVE ANCHORS NO. 6 BAR	EA	11	---	---	11	22
502.4207	ADHESIVE ANCHORS NO. 7 BAR	EA	12	---	---	6	18
502.4210	ADHESIVE ANCHORS NO. 10 BAR	EA	8	---	---	8	16
503.0128	PRESTRESSED GIRDER TYPE I 28-INCH	LF	---	---	---	---	675
505.0000	BAR STEEL REINFORCEMENT HS STRUCTURES	LB	3,440	3,970	3,970	2,480	13,860
505.0600	BAR STEEL REINFORCEMENT HS COATED STRUCTURES	LB	1,950	5,020	5,020	1,190	29,500
506.2610	BEARING PADS ELASTOMERIC LAMINATED	EA	4	8	8	---	20
506.4000	STEEL DIAPHRAGMS B-13-140	EA	---	---	---	---	9
506.5000	BEARING ASSEMBLIES FIXED B-13-140	EA	---	---	---	4	4
509.1500	CONCRETE SURFACE REPAIR	SF	---	---	---	---	100
509.2000	FULL-DEPTH DECK REPAIR	SY	---	---	---	---	12
511.1200	TEMPORARY SHORING B-13-140	SF	150	600	600	150	1,500
516.0500	RUBBERIZED MEMBRANE WATERPROOFING	SY	10	---	---	8	18
550.1100	PIPING STEEL HP 10-INCH X 42 LB	LF	270	---	---	240	510
604.0500	SLOPE PAVING CRUSHED AGGREGATE	SY	110	---	---	110	220
612.0406	PIPE UNDERDRAIN WRAPPED 6-INCH	LF	70	---	---	50	120
614.0150	ANCHOR ASSEMBLIES FOR STEEL PLATE BEAM GIRDERS	EA	1	---	---	1	2
SPV.0060.700	CLEANING AND PAINTING BEARINGS	EACH	5	---	---	5	10
	NON-BID-ITEMS						
	FILLER	SIZE					3/4"

GENERAL NOTES

- DRAWINGS ARE NOT TO BE SCALED.
- DIMENSIONS AND ELEVATIONS ARE BASED ON EXISTING ORIGINAL STRUCTURE PLANS, DECK REPLACEMENT PLANS, AND FIELD SURVEY.
- BAR STEEL REINFORCING SHALL BE EMBEDDED 2" CLEAR UNLESS OTHERWISE SHOWN OR NOTED.
- UTILIZE EXISTING BAR STEEL REINFORCEMENT WHERE SHOWN AND EXTEND 24 BAR DIAMETERS INTO NEW WORK, UNLESS SPECIFIED OTHERWISE.
- THE FIRST OR FIRST TWO DIGITS OF THE BAR MARK SIGNIFIES THE BAR SIZE.
- SALVAGE EXISTING NAME PLATE IF POSSIBLE, OTHERWISE THE NAME PLATE SHALL BE REPRODUCED TO MATCH THE ORIGINAL IN ACCORDANCE WITH SECTION 502.3.1.1 OF THE STANDARD SPECIFICATIONS AND THE STANDARD DETAIL DRAWINGS. NAME PLATE TO SHOW ORIGINAL CONSTRUCTION YEAR OF 1961.
- ALL CONCRETE REMOVAL SHALL BE DEFINED BY A 1" DEEP SAW CUT UNLESS OTHERWISE NOTED.
- THE UPPER LIMITS OF EXCAVATION FOR STRUCTURES SHALL BE THE EXISTING GROUNDLINE.
- SEE ROADWAY PLANS FOR LANE STAGING AND TRAFFIC.
- THE SLOPE OF THE FILL IN FRONT OF THE ABUTMENTS SHALL BE COVERED WITH SLOPE PAVING (CRUSHED AGGREGATE) TO THE EXTENT SHOWN IN THE GENERAL PLAN, ABUTMENT DETAILS AND ALL DETAILS SHOWN IN PLAN.
- THE HAUNCH CONCRETE QUANTITY IS BASED ON THE AVERAGE HAUNCH SHOWN ON SHEET 16.
- AT THE BACKFACE OF ABUTMENT ALL VOLUME WHICH CANNOT BE PLACED BEFORE ABUTMENT CONSTRUCTION AND IS NOT OCCUPIED BY THE NEW STRUCTURE SHALL BE BACKFILLED WITH BACKFILL STRUCTURE TYPE A. SEE SHEETS 6 AND 9 FOR DETAIL.
- APPLY PROTECTIVE SURFACE TREATMENT TO TOP OF NEW BRIDGE DECK AND PIGMENTED SURFACE SEALER TO TOP AND INSIDE FACES OF NEW PARAPET.
- THE EXISTING BRIDGE B-13-140 IS A 3-SPAN CONTINUOUS STEEL GIRDER BRIDGE WITH AN OVERALL LENGTH OF 176'-3 3/4" AND A CLEAR ROADWAY WIDTH OF 40'.



* DIMENSIONS ARE APPROXIMATE. THE GRATE IS SIZED TO FIT INTO A PIPE COUPLING. ORIENT SO SLOTS ARE VERTICAL. THE RODENT SCREEN, PIPE COUPLING AND SCREWS SHALL BE INCLUDED WITH THE BID ITEM "PIPE UNDERDRAIN WRAPPED 6 INCH".

THE RODENT SCREEN SHALL BE A PVC GRATE SIMILAR TO THIS DETAIL. THE GRATE IS COMMERCIALY AVAILABLE AS A FLOOR STRAINER. A PIPE COUPLING IS REQUIRED FOR THE ATTACHMENT OF THIS SCREEN TO THE EXPOSED END OF THE PIPES UNDERDRAIN. THE SCREEN SHALL BE FASTENED TO THE PIPE COUPLING WITH TWO OR MORE NO. 10 x 1" STAINLESS STEEL SHEET METAL SCREWS.

★ CONCRETE SURFACE REPAIR TO BE USED AT ABUTMENTS AND PIERS AND FULL-DEPTH DECK REPAIR TO BE USED ON EXISTING DECK AS DIRECTED BY FIELD ENGINEER.

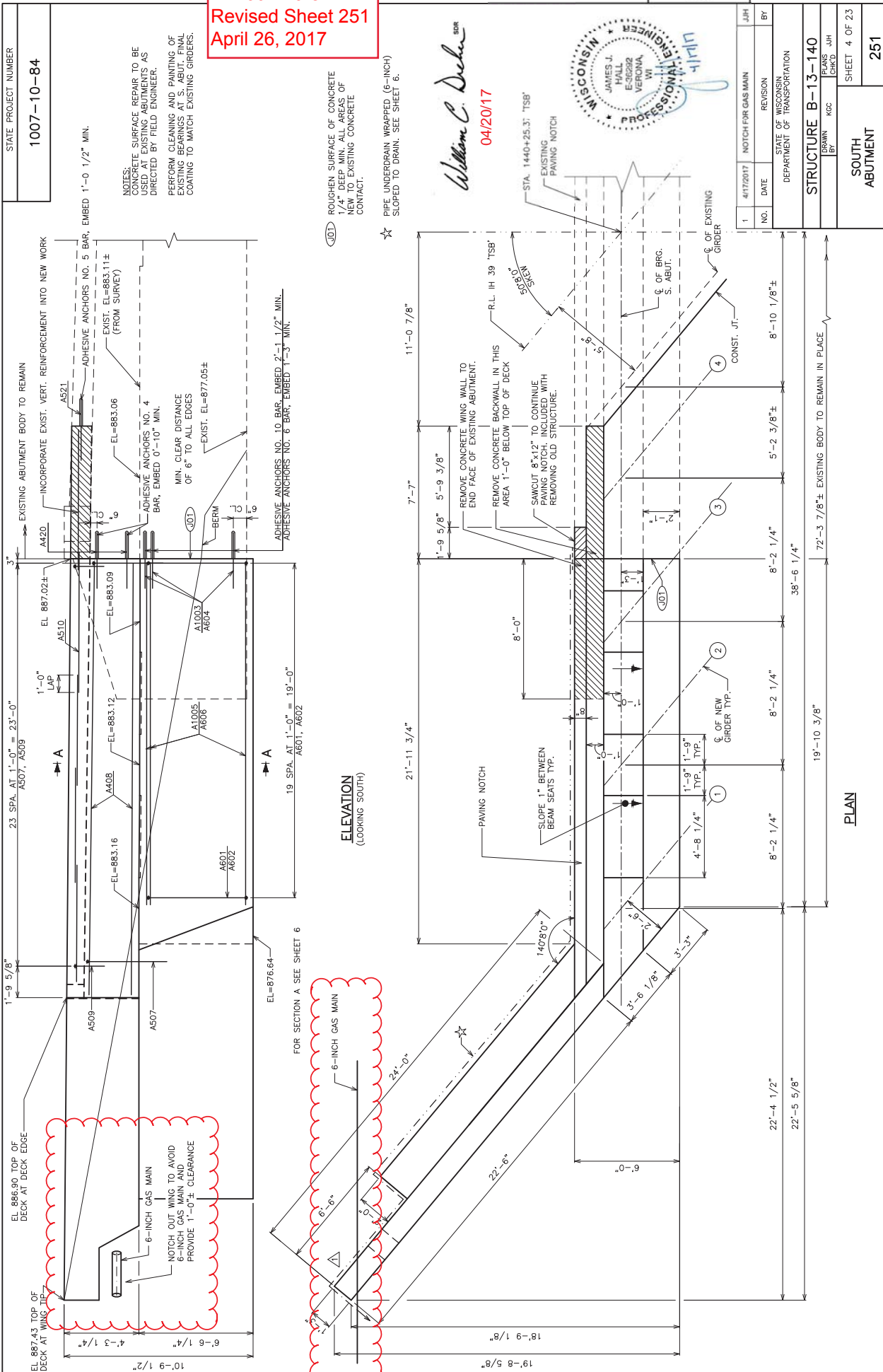


Addendum No. 01
ID 1007-10-84
Revised Sheet 250
April 26, 2017

William C. Decker
SR
04/24/17

1	4/17/2017	QUANTITY ADJUSTMENT	JJH
NO.	DATE	REVISION	BY
STATE OF WISCONSIN DEPARTMENT OF TRANSPORTATION			
STRUCTURE B-13-140			
DRAWN BY	KCC	PLANS CHKS	JJH
ESTIMATED QUANTITIES			
AND NOTES			
SHEET 3 OF 23			
250			

Addendum No. 01
 ID 1007-10-84
 Revised Sheet 251
 April 26, 2017



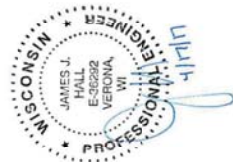
STATE PROJECT NUMBER
 1007-10-84

NOTES:
 CONCRETE SURFACE REPAIR TO BE USED AT EXISTING ABUTMENTS AS DIRECTED BY FIELD ENGINEER.
 PERFORM CLEANING AND PAINTING OF EXISTING BEARINGS AT S. ABUT. FINAL COATING TO MATCH EXISTING GIRDERS.

(RDT) ROUGHEN SURFACE OF CONCRETE 1/4\"

★ PIPE UNDERDRAIN WRAPPED (6-INCH) SLOPED TO DRAIN. SEE SHEET 6.

William C. Decker
 04/20/17
 PROFESSIONAL ENGINEER
 WISCONSIN
 JAMES J. HALL
 E-30222
 VERONA
 WI



NO.	DATE	REVISION	BY
1	4/17/2017	NOTCH FOR GAS MAIN	JJH

STATE OF WISCONSIN
 DEPARTMENT OF TRANSPORTATION

STRUCTURE B-13-140

PLANS
 DRAWN BY: KCC
 CHECKED BY: JJH

SOUTH ABUTMENT

SHEET 4 OF 23

251

ELEVATION
 (LOOKING SOUTH)

PLAN

8

8

42SS PARAPET FOR SHOWS SEE SHEET 22

SECTION D
NOTE: CUT BAR STEEL AS NEEDED TO FIT NOTCH REQUIRED TO AVOID 6-INCH GAS LINE.

William C. Decker
04/20/17

- NOTCH OUT WING TO AVOID 6-INCH GAS MAIN AND PROVIDED 1'-0"± CLEARANCE
- DENOTES BATTERED PILES. BATTER 37/FOOT IN DIRECTION SHOWN
- 18" RUBBERIZED MEMBRANE WATERPROOFING SEAL ALL HORIZONTAL AND VERTICAL JOINTS ON BACK FACE OF ABUTMENT
- OPT. KEYED CONST. JOINT FORMED BY A SURFACED BEVELED 2"x6" WITH RUBBERIZED MEMBRANE WATERPROOFING ON B.F.
- 3/4" V GROOVE ON F.F. OF WINGWALL. OMIT IF CONST. JOINT NOT USED.
- F.F. DENOTES FRONT FACE
- B.F. DENOTES BACK FACE
- E.F. DENOTES EACH FACE



NO.	DATE	REVISION	BY
1	4/17/2017	NOTCH FOR GAS MAIN	JJH

STATE OF WISCONSIN
DEPARTMENT OF TRANSPORTATION

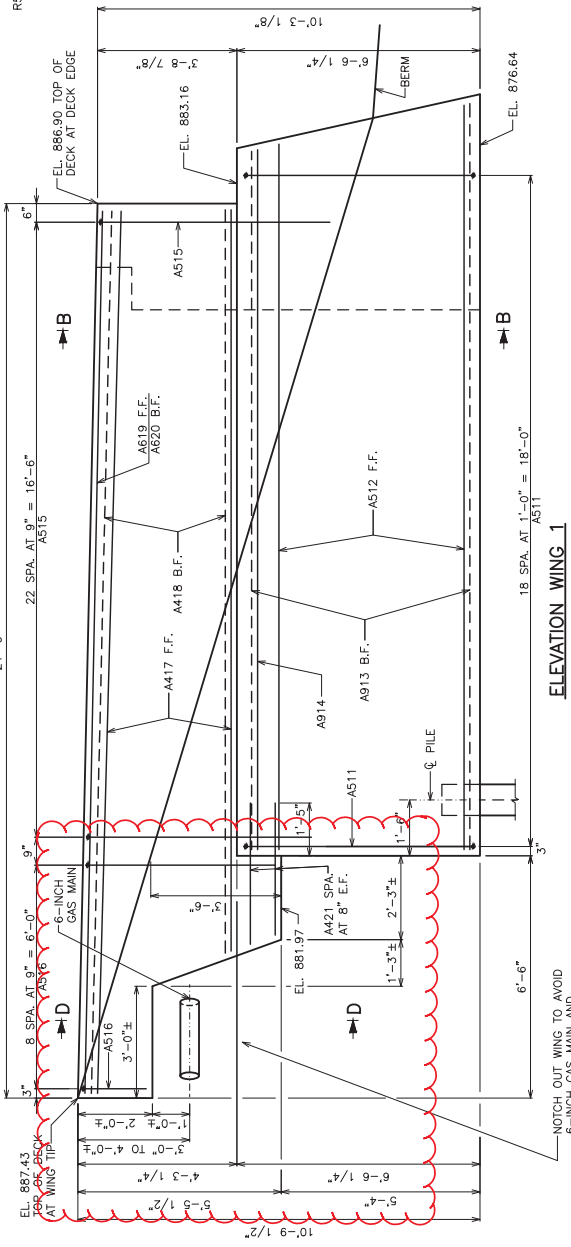
STRUCTURE B-13-140

PLANS
DRAWN: KCC
BY: JJJH
CHECKED: JJJH

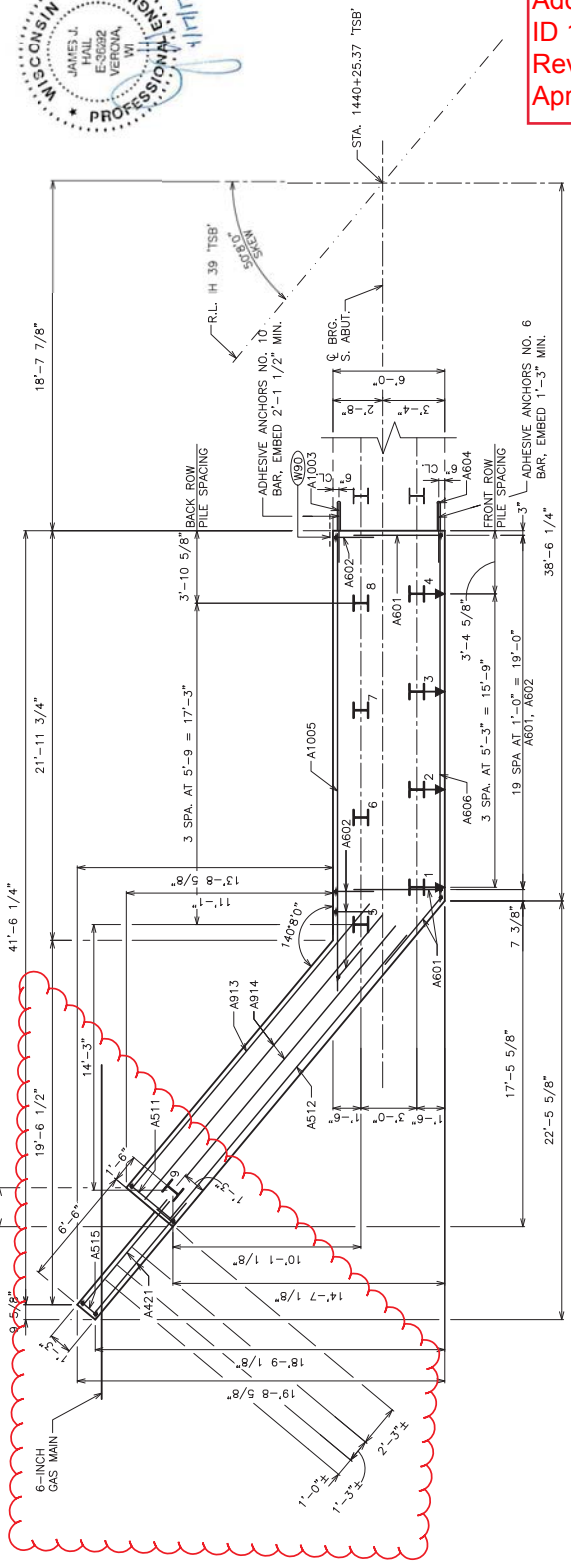
SOUTH ABUTMENT
WING 1 DETAILS

SHEET 5 OF 23

252



SECTION B



Addendum No. 01
ID 1007-10-84
Revised Sheet 252
April 26, 2017

STATE PROJECT NUMBER
1007-10-84

WEIGHTS INCLUDE PARAPET
STEEL SHOWN ON SHEET 22
COATED: 1,950 LBS
UNCOATED: 3,440 LBS

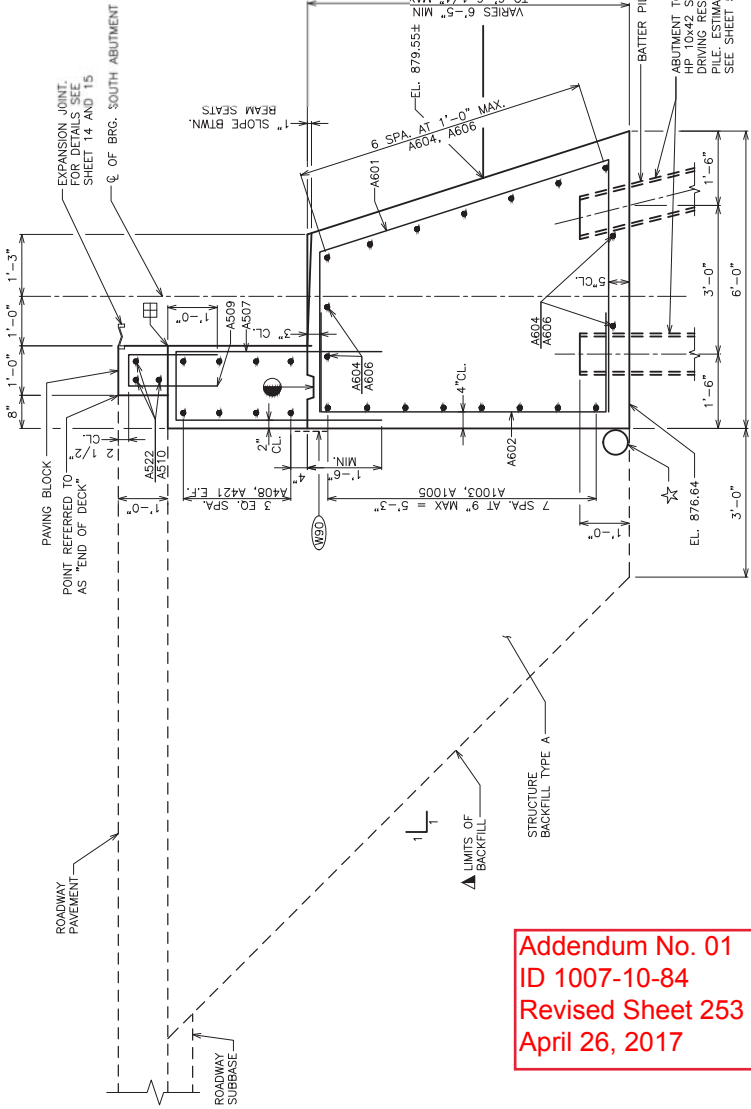
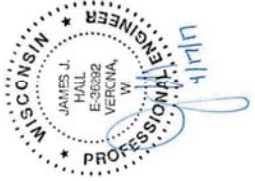
BILL OF BARS
FOR SOUTH ABUTMENT

BAR MARK	NO.	REQD.	LENGTH	BAR SERIES	LOCATION
A601	21	13-11	X	BODY VERT. F.F.	
A602	22	12-5	X	BODY VERT. B.F.	
A1003	6	4-4		BODY DOWELS B.F.	
A604	11	2-6		BODY DOWELS	
A1005	8	24-6		BODY HORIZ. B.F.	
A606	11	19-8		BODY HORIZ.	
A408	X	22-11	X	BACKWALL HORIZ.	
A408	X	24	4-0	BACKWALL AT PAVING BLOCK VERT.	
A509	X	24	4-0	BACKWALL HORIZ.	
A510	X	15	8-0	PAVING BLOCK HORIZ.	
A511	19	17-10	X	WING 1 BODY VERT.	
A512	9	19-10		WING 1 BODY HORIZ. F.F.	
A913	9	19-10		WING 1 BODY HORIZ. B.F.	
A914	3	19-10		WING 1 BODY HORIZ.	
A515	23	12-8	X	WING 1 RAIL VERT.	
A516	9	11-4	X	WING 1 RAIL VERT.	
A417	4	22-4		WING 1 RAIL HORIZ. F.F.	
A418	5	23-5		WING 1 RAIL HORIZ. B.F.	
A619	1	22-4		WING 1 RAIL HORIZ. TOP F.F.	
A620	1	23-5		WING 1 RAIL HORIZ. TOP B.F.	
A421	X	4	7-9	WING 1 RAIL HORIZ. BOTH FACES	
A422	X	8	1-8	BACKWALL DOWELS	
A523	X	2	2	PAVING BLOCK DOWELS	

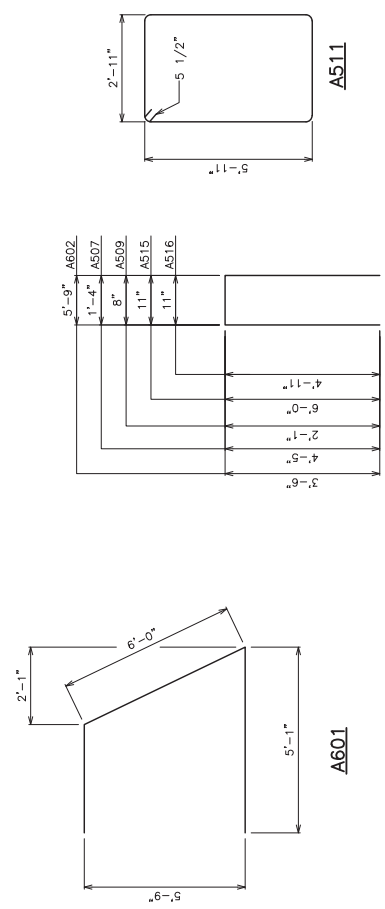
BENDING DIMENSIONS ARE OUT TO OUT OF BARS.

ADHESIVE ANCHORS

CUT BARS AS NEEDED TO FIT NOTCH REQUIRED TO AVOID 6-INCH GAS LINE.



SECTION A



William C. DeLuca SR
04/20/17

F.F. DENOTES FRONT FACE
B.F. DENOTES BACK FACE
E.F. DENOTES EACH FACE
SEE SHEET 3 FOR PILE SPLICE DETAIL.

☆ PIPE UNDERDRAN WRAPPED (6-INCH) SLOPE 0.5% MIN. TO SUITABLE DRAINAGE. ATTACH RODENT SHIELD AT DISCHARGE END OF PIPE UNDERDRAN AND CAP AT THE OTHER END. RODENT SHIELD TO BE INCLUDED IN BID PRICE OF "PIPE UNDERDRAN WRAPPED 6-INCH". SEE SHEET 3.

Ⓢ 18" RUBBERIZED MEMBRANE WATERPROOFING SEAL ALL HORIZONTAL AND VERTICAL JOINTS ON BACK FACE OF ABUTMENT.

● OPT. KEYED CONST. JOINT - FORMED BY A SURFACED BEVELED 2"x6" WITH RUBBERIZED MEMBRANE WATERPROOFING ON B.F.

⊞ CONSTRUCTION JOINT - POUR CONCRETE ABOVE THIS JOINT AFTER SUPERSTRUCTURE IS IN PLACE. STRIKE OFF AND LEVEL ROUGH.

▲ THE UPPER LIMITS OF EXCAVATION FOR STRUCTURES BRIDGES B-13-140" SHALL BE THE EXISTING GROUNDLINE.

▲ BACKFILL PAY LIMITS. BACKFILL BEYOND BACKFILL PAY LIMITS SHALL BE INCIDENTAL TO EXCAVATION FOR STRUCTURES. LIMITS OF EXCAVATION SHALL BE DETERMINED BY THE CONTRACTOR.

▲ AT THE BACKFACE OF ABUTMENT ALL VOLUME WHICH CANNOT BE PLACED BEFORE ABUTMENT CONSTRUCTION AND IS NOT OCCUPIED BY THE NEW STRUCTURE SHALL BE BACKFILLED WITH STRUCTURE BACKFILL.

FOR LOCATION OF SECTION "A", SEE SHEET 4.

Addendum No. 01
ID 1007-10-84
Revised Sheet 253
April 26, 2017

1	4/17/2017	NOTCH FOR GAS MAIN	JH
NO.	DATE	REVISION	BY
STATE OF WISCONSIN DEPARTMENT OF TRANSPORTATION			
STRUCTURE B-13-140			
DRAWN	KGC	CHKD	JH
SOUTH ABUTMENT DETAILS			
			253
			SHEET 6 OF 23

Addendum No. 01
 ID 1007-10-84
 Revised Sheet 284
 April 26, 2017

9

PROJECT ID 1007-10-84
 STAGE 2 - SB IH 39 MEDIAN

STATION	Real Station	Distance	AREA (SF)				Incremental Vol (CY) (Unadjusted)				Cumulative Vol (CY)				Mass Ordinate		
			Excavation Rock	Excavation Marsh	Excavation Rock	Excavation Marsh	Cut	Fill	EBS	Excavation Marsh	Excavation Rock	Excavation Marsh	EBS	Excavation Marsh		Excavation Rock	
1275+50	127550	50.00	139.46	7.53	0.00	425.92	473	43	0	0	1197	3214	9157	669	0	1401	-5943
1276+00	127600	50.00	248.09	3.02	0.00	531.91	359	10	0	0	887	3573	9167	669	0	2288	-5594
1276+50	127650	50.00	-579.52	2.44	0.00	598.7	-307	5	0	0	1047	3266	9172	669	0	3326	-5906
1277+00	127700	50.00	156.67	1.36	0.00	601.63	-391	4	0	0	1111	2875	9176	669	0	4446	-6301
1277+50	127750	50.00	148.70	0.33	0.00	591.43	283	2	0	0	1105	3158	9177	669	0	5551	-6019
1278+00	127800	50.00	198.95	0.73	0.00	597.2	322	1	0	0	1101	3480	9178	669	0	6651	-5688
1278+50	127850	50.00	157.15	1.7	0.00	645.18	330	2	0	0	1124	3809	9180	669	0	7802	-5371
1279+00	127900	50.00	166.63	2.9	0.00	633.04	300	4	0	0	1172	4109	9185	669	0	8976	-5075
1279+50	127950	50.00	158.55	3.35	0.00	589.11	301	6	0	0	1255	4410	9190	669	0	10098	-4780
1280+00	128000	50.00	167.44	4.15	0.00	766.37	302	7	0	0	988	4712	9197	669	0	11353	-4485
1280+50	128050	50.00	145.92	4.99	0.00	300.99	290	8	0	0	259	5002	9206	669	0	12342	-4204
1280+97	128096.5	46.50	395.70	22.91	0.00	0.00	466	24	0	0	0	5469	9230	669	0	12601	-3761
1281+00	128100	50.00	496.81	21.66	0.00	0.00	58	3	0	0	0	5526	9233	669	0	12601	-3706
1281+50	128150	50.00	505.60	8.05	0.00	0.00	928	28	0	0	0	7111	9286	669	0	12601	-2806
1282+00	128200	50.00	203.31	19.76	0.00	0.00	656	26	0	0	0	7339	9353	669	0	12601	-2175
1282+50	128250	50.00	42.68	52.66	0.00	0.00	228	67	0	0	0	7394	9500	669	0	12601	-2014
1283+00	128300	50.00	17.30	105.73	0.00	0.00	56	147	0	0	0	7426	9737	669	0	12601	-2105
1283+50	128350	50.00	17.04	150.74	0.00	0.00	32	237	0	0	0	7444	9913	669	0	12601	-2311
1283+79	128378.873	28.87	16.72	177.97	0.00	0.00	18	176	0	0	0	7457	10037	669	0	12601	-2469
1284+00	128400	50.00	16.91	140.45	0.00	0.00	13	125	0	0	0	7489	10259	669	0	12601	-2570
1284+50	128450	50.00	17.19	99.1	0.00	0.00	32	222	0	0	0	7521	10412	669	0	12601	-2770
1285+00	128500	50.00	26.74	65.96	0.00	0.00	43	163	0	0	0	7598	10535	669	0	12601	-2881
1285+50	128550	50.00	43.25	66.95	0.00	0.00	67	123	0	0	0	7677	10687	669	0	12601	-2937
1286+00	128600	50.00	42.12	96.98	0.00	0.00	79	152	0	0	0	7732	10905	669	0	12601	-3010
1286+50	128650	50.00	16.62	138.39	0.00	0.00	54	218	0	0	0	7760	11095	669	0	12601	-3173
1287+00	128700	50.00	18.00	233.03	0.00	0.00	29	301	0	0	0	7764	11248	669	0	12601	-3445
1287+50	128750	50.00	15.10	180.06	0.00	0.00	3	42	0	0	0	7799	11634	669	0	12601	-3835
1288+00	128800	50.00	19.52	192.05	0.00	0.00	35	386	0	0	0	7834	12004	669	0	12601	-4170
1288+50	128850	50.00	18.26	207.66	0.00	0.00	36	370	0	0	0	7889	12407	669	0	12601	-4538
1289+00	128900	50.00	53.81	242.44	0.00	0.00	35	403	0	0	0	7935	12841	669	0	12601	-4906
1289+37	128936.873	36.87	102.59	245.89	0.00	0.00	107	333	0	0	0	8042	13175	669	0	12601	-5133
1289+50	128950	50.00	13.13	177.77	0.00	0.00	29	115	0	0	0	8071	13290	669	0	12601	-5218
1290+00	129000	50.00	78.40	213.5	0.00	0.00	89	407	0	0	0	8161	13696	669	0	12601	-5536
1290+50	129050	50.00	30.04	238.06	0.00	0.00	100	418	0	0	0	8261	14114	669	0	12601	-5854
1291+00	129100	50.00	28.89	258.78	0.00	0.00	55	460	0	0	0	8315	14574	669	0	12601	-6259
1291+50	129150	50.00	28.67	267.85	0.00	0.00	53	488	0	0	0	8369	15062	669	0	12601	-6693
1292+00	129200	50.00	27.54	253.59	0.00	0.00	52	483	0	0	0	8421	15545	669	0	12601	-7124
1292+50	129250	50.00	26.86	301.4	0.00	0.00	52	431	0	0	0	8473	15966	669	0	12601	-7493
1293+00	129300	50.00	25.28	330.41	0.00	0.00	54	307	0	0	0	8527	16273	669	0	12601	-7747
1293+50	129350	50.00	41.06	94.17	0.00	0.00	65	268	0	0	0	8582	16481	669	0	12601	-7869
1294+00	129400	50.00	76.98	194.72	0.00	0.00	109	267	0	0	0	8701	16749	669	0	12601	-8048
1294+18	129417.864	17.86	108.15	193.8	0.00	0.00	61	129	0	0	0	8763	16877	669	0	12601	-8115
1294+50	129450	50.00	31.13	109.41	0.00	0.00	83	180	0	0	0	8845	17058	669	0	12601	-8212
1295+00	129500	50.00	56.18	89.92	0.00	0.00	81	185	0	0	0	8926	17242	669	0	12601	-8316
1295+50	129550	50.00	30.40	80.22	0.00	0.00	80	158	0	0	0	9006	17400	669	0	12601	-8393
1296+00	129600	50.00	80.02	40.44	0.00	0.71	102	112	0	1	42	9109	17512	669	0	12602	-8403
1296+50	129650	50.00	170.73	15.78	0.00	44.63	232	52	0	0	0	9341	17564	669	0	12602	-8423
1297+00	129700	50.00	204.19	7.86	0.00	130.31	347	22	0	0	106	9688	17586	669	0	12750	-7898
1297+50	129750	50.00	305.66	3.76	0.00	130.31	472	11	0	0	186	10160	17596	669	0	12935	-7436
1298+00	129800	50.00	422.16	2.28	0.00	263.17	674	6	0	0	364	10834	17602	669	0	13300	-6768
1298+50	129850	50.00	381.94	2.26	0.00	215.46	745	4	0	0	443	11579	17606	669	0	13743	-6028
1299+00	129900	50.00	218.25	12.33	0.00	31.28	556	14	0	0	228	12134	17620	669	0	13971	-5485
1299+50	129950	50.00	44.89	37.56	0.00	0.00	244	46	0	0	29	12378	17666	669	0	14000	-5288
1300+00	130000	50.00	45.81	136.55	0.00	0.00	84	161	0	0	0	12462	17827	669	0	14000	-5365
1300+15	130014.847	14.85	114.45	138.95	0.00	0.00	44	76	0	0	0	12506	17903	669	0	14000	-5397
1300+50	130050	50.00	50.56	123.43	0.00	0.00	107	171	0	0	0	12613	18074	669	0	14000	-5460
1301+00	130100	50.00	28.82	114.45	0.00	0.00	74	220	0	0	0	12687	18294	669	0	14000	-5607
1301+50	130150	50.00	29.51	100.66	0.00	0.00	54	169	0	0	0	12741	18493	669	0	14000	-5752
1302+00	130200	50.00	30.24	67.61	0.00	0.00	55	156	0	0	0	12796	18849	669	0	14000	-5853
1302+50	130250	50.00	67.52	23.84	0.00	3.87	91	85	0	4	4	12887	18734	669	0	14004	-5847
1303+00	130300	50.00	113.62	35.4	0.00	0.00	168	55	0	0	0	13054	18788	669	0	14008	-5734
1303+50	130350	50.00	90.51	82.34	0.00	2.11	189	109	0	0	2	13243	18897	669	0	14009	-5654

HWY: IH 39

COUNTY: DANE

COMPUTER EARTHWORK DATA

SHEET

284

E

9

PROJECT ID 1007-10-84
 FILE NAME : F:\PROJECTS\1007-10-84\1007-10-84\1007-10-84-SEC 09 Computer Earthwork Data\090000.ew.dwg
 PLOT BY : SEH INC
 PLOT DATE : 4/24/2017 12:59 PM
 LAYOUT NAME : 090009.EW
 PLOT SCALE : NIS

WISDOT/CADD SHEET 49

Addendum No. 01
ID 1007-10-84
Revised Sheet 285
April 26, 2017

9

PROJECT ID 1007-10-84 STAGE 2 - SB IH 39 MEDIAN		AREA (SF)								Incremental Vol (CY) (Unadjusted)				Cumulative Vol (CY)				Mass Ordinate
STATION	Real Station	Distance	Cut	Fill	EBS (In Cross Sections)	Excavation Marsh (In Cross Sections)	Excavation Rock (In Cross Sections)	Cut	Fill	EBS	Excavation Marsh	Excavation Rock	Cut	Fill	EBS	Excavation Marsh	Excavation Rock	
13034+3	130343.088	13.09	34.85	104.97	0.00	0.00	21.62	61	91	0	0	0	13304	18988	669	0	14021	-5684
1304+0	130400	36.91	124.35	64.27	0.00	0.00	44.06	109	116	0	0	0	13413	19104	669	0	14066	-5691
1304+50	130450	50.00	60.76	21.11	0.00	0.00	37.22	190	79	0	0	0	13603	19183	669	0	14141	-5580
1305+00	130500	50.00	44.23	13.09	0.00	0.00	66.51	116	32	0	0	0	13719	19215	669	0	14237	-5496
1305+50	130550	50.00	62.35	10.87	0.00	0.00	94.94	99	22	0	0	0	13817	19237	669	0	14287	-5419
1306+00	130600	50.00	73.37	10.82	0.00	0.00	105.74	126	20	0	0	0	13943	19257	669	0	14372	-5314
1306+50	130650	50.00	71.36	10.27	0.00	0.00	108.34	136	20	0	0	0	14079	19276	669	0	14451	-5197
1307+00	130700	50.00	66.29	8.53	0.00	0.00	110.66	129	17	0	0	0	14208	19294	669	0	14973	-5086
1307+50	130750	50.00	64.83	5.69	0.00	0.00	117.2	121	13	0	0	0	14330	19307	669	0	15184	-4977
1308+00	130800	50.00	125.89	6.18	0.00	0.00	119.69	97	11	0	0	0	14506	19324	669	0	15404	-4812
1308+26	BK	26.12	66.38	6.08	0.00	0.00	0.00	0	0	0	0	0	14599	19324	669	0	15462	-4725
1308+30	AH	31.04	0.09	0.00	0.00	0.00	0.00	24	0	0	0	0	14599	19324	669	0	15462	-4725
1309+00	130900	20.00	31.91	0.00	0.00	0.00	0.00	0	0	0	0	0	14623	19324	669	0	15462	-4701
1309+50	130950	36.95	31.13	0.00	0.00	0.00	0.00	43	0	0	0	0	14667	19324	669	0	15462	-4657
1310+00	131000	13.95	36.25	0.00	0.00	0.00	0.00	18	0	0	0	0	14685	19324	669	0	15462	-4639
1310+50	131050	37.00	37.46	0.00	0.00	0.00	0.00	70	0	0	0	0	14755	19324	669	0	15462	-4569
1311+00	131100	50.00	37.00	0.00	0.00	0.00	0.00	69	0	0	0	0	14824	19324	669	0	15462	-4500
1311+50	131150	50.00	12.45	0.00	0.00	0.00	0.00	46	0	0	0	0	14893	19324	669	0	15462	-4454
1312+00	131200	49.89	12.56	0.00	0.00	0.00	0.00	23	0	0	0	0	14916	19324	669	0	15462	-4431
1312+50	131250	50.11	12.69	0.00	0.00	0.00	0.00	24	0	0	0	0	14940	19324	669	0	15462	-4408
1313+00	131300	50.00	12.75	0.00	0.00	0.00	0.00	23	0	0	0	0	14983	19324	669	0	15462	-4384
1313+50	131350	50.00	33.83	0.00	0.00	0.00	0.00	43	0	0	0	0	15043	19324	669	0	15462	-4341
1314+00	131400	50.00	31.57	0.00	0.00	0.00	0.00	61	0	0	0	0	15100	19324	669	0	15462	-4281
1314+50	131450	50.00	29.66	0.00	0.00	0.00	0.00	57	0	0	0	0	15155	19324	669	0	15462	-4224
1315+00	131500	50.00	29.49	0.00	0.00	0.00	0.00	55	0	0	0	0	15206	19324	669	0	15462	-4169
1315+50	131550	50.00	26.18	0.00	0.00	0.00	0.00	52	0	0	0	0	15255	19324	669	0	15462	-4118
1316+00	131600	50.00	26.75	0.00	0.00	0.00	0.00	49	0	0	0	0	15305	19324	669	0	15462	-4069
1316+50	131650	50.00	27.16	0.00	0.00	0.00	0.00	50	0	0	0	0	15356	19324	669	0	15462	-4019
1317+00	131700	50.00	27.41	0.00	0.00	0.00	0.00	51	0	0	0	0	15407	19324	669	0	15462	-3968
1317+50	131750	50.00	28.02	0.00	0.00	0.00	0.00	51	0	0	0	0	15462	19324	669	0	15462	-3917
1318+00	131800	50.00	31.31	0.00	0.00	0.00	0.00	55	0	0	0	0	15521	19324	669	0	15462	-3862
1318+50	131850	50.00	32.50	0.00	0.00	0.00	0.00	59	0	0	0	0	15579	19324	669	0	15462	-3803
1319+00	131900	50.00	29.62	0.00	0.00	0.00	0.00	58	0	0	0	0	15619	19324	669	0	15462	-3745
1319+36	131936.114	36.11	30.15	0.00	0.00	0.00	0.00	40	0	0	0	0	15619	19324	669	0	15462	-3705
1319+50	131950	13.89	30.34	0.00	0.00	0.00	0.00	16	0	0	0	0	15634	19324	669	0	15462	-3690
1320+00	132000	50.00	31.04	0.00	0.00	0.00	0.00	57	0	0	0	0	15691	19324	669	0	15462	-3633
1320+50	132050	50.00	27.91	0.23	0.00	0.00	0.00	55	0	0	0	0	15746	19324	669	0	15462	-3579
1321+00	132100	50.00	28.18	0.77	0.00	0.00	0.00	52	1	0	0	0	15797	19325	669	0	15462	-3528
1321+50	132150	50.00	21.54	0.31	0.00	0.00	0.00	46	1	0	0	0	15843	19326	669	0	15462	-3483
1321+64	132163.683	13.89	21.38	0.48	0.00	0.00	0.00	11	0	0	0	0	15855	19326	669	0	15462	-3472
1321+72	132172.019	6.13	21.28	0.59	0.00	0.00	0.00	6	0	0	0	0	15865	19327	669	0	15462	-3466
1321+77	132176.678	4.86	21.23	0.65	0.00	0.00	0.00	4	0	0	0	0	15871	19327	669	0	15462	-3462
1321+85	132185.027	8.15	21.03	0.81	0.00	0.00	0.00	6	0	0	0	0	15883	19327	669	0	15462	-3456
1322+00	132200	14.97	20.55	1.21	0.00	0.00	0.00	12	1	0	0	0	15920	19331	669	0	15462	-3445
1322+50	132250	50.00	19.91	2.37	0.00	0.00	0.00	37	3	0	0	0	15953	19336	669	0	15462	-3411
1323+00	132300	50.00	19.39	3.47	0.00	0.00	0.00	36	5	0	0	0	15993	19343	669	0	15462	-3380
1323+50	132350	50.00	19.48	4.23	0.00	0.00	0.00	36	7	0	0	0	16029	19352	669	0	15462	-3351
1324+00	132400	50.00	19.83	4.87	0.00	0.00	0.00	36	8	0	0	0	16065	19362	669	0	15462	-3323
1324+50	132450	50.00	19.35	6.29	0.00	0.00	0.00	36	10	0	0	0	16101	19374	669	0	15462	-3297
1325+00	132500	50.00	19.73	7.16	0.00	0.00	0.00	36	12	0	0	0	16138	19388	669	0	15462	-3273
1325+50	132550	50.00	20.10	7.6	0.00	0.00	0.00	37	14	0	0	0	16176	19403	669	0	15462	-3250
1326+00	132600	50.00	21.04	8.33	0.00	0.00	0.00	38	15	0	0	0	16216	19420	669	0	15462	-3226
1326+50	132650	50.00	21.31	10.29	0.00	0.00	0.00	39	17	0	0	0	16254	19441	669	0	15462	-3204
1327+00	132700	50.00	20.71	12.11	0.00	0.00	0.00	39	21	0	0	0	16292	19465	669	0	15462	-3186
1327+50	132750	50.00	20.19	13.55	0.00	0.00	0.00	38	24	0	0	0	16330	19492	669	0	15462	-3172
1328+00	132800	50.00	20.17	15.88	0.00	0.00	0.00	37	27	0	0	0	16367	19523	669	0	15462	-3156
1328+50	132850	50.00	20.19	17.59	0.00	0.00	0.00	37	31	0	0	0	16404	19556	669	0	15462	-3152
1329+00	132900	50.00	19.95	18.42	0.00	0.00	0.00	36	33	0	0	0	16441	19594	669	0	15462	-3152
1329+50	132950	50.00	19.36	21.14	0.00	0.00	0.00	36	38	0	0	0	16477	19640	669	0	15462	-3153
1330+00	133000	50.00	19.36	27.86	0.00	0.00	0.00	36	46	0	0	0	16501	19713	669	0	15462	-3163
1330+36	133035.622	35.62	17.93	83.52	0.00	0.00	0.00	25	73	0	0	0	16511	19758	669	0	15462	-3212
1330+50	133050	14.38	17.98	85.44	0.00	0.00	0.00	9	45	0	0	0	16543	19901	669	0	15462	-3248
1331+00	133100	50.00	17.27	68.18	0.00	0.00	0.00	32	142	0	0	0	16543	19901	669	0	15462	-3358

PROJECT ID 1007-10-84
STAGE 2 - SB IH 39 MEDIAN

PROJECT ID: 1007-10-84
COUNTY: DANE
FILE NAME: P:\NEUMMEL\119189\CVL\30\1007\001\Sheets\10071084\SEC 09 Computer Earthwork Data\090100_ev.dwg
PLANT: 10-84
PLOT BY: SEH INC
PLOT DATE: 4/24/2017 12:59 PM
LAYOUT NAME: 090100.EW
PLOT SCALE: NTS
SHEET 285
E

PROJECT ID: 1007-10-84
COUNTY: DANE
FILE NAME: P:\NEUMMEL\119189\CVL\30\1007\001\Sheets\10071084\SEC 09 Computer Earthwork Data\090100_ev.dwg
PLANT: 10-84
PLOT BY: SEH INC
PLOT DATE: 4/24/2017 12:59 PM
LAYOUT NAME: 090100.EW
PLOT SCALE: NTS
SHEET 285
E

PROJECT ID 1007-10-84
STAGE 2 - SB IH 39 MEDIAN

STATION	Real Station	Distance	AREA (SF)				Incremental Vol (CY) (Unadjusted)				Cumulative Vol (CY)				Mass Ordinate		
			Cut	Fill	EBS (In Cross Sections)	Excavation Marsh (In Cross Sections)	Excavation Rock (In Cross Sections)	Cut	Fill	EBS	Excavation Marsh	Excavation Rock	Cut	Fill		EBS	Excavation Marsh
1391+50	139150	50.00	17.29	62.81	0.00	0.00	0.00	64	243	0	0	16607	20143	669	0	15462	-3537
1392+00	139200	50.00	17.76	51.31	0.00	0.00	0.00	32	106	0	0	16639	20249	669	0	15462	-3610
1392+50	139250	50.00	16.72	46.5	0.00	0.00	0.00	34	91	0	0	16673	20340	669	0	15462	-3667
1393+00	139300	50.00	19.42	43.47	0.00	0.00	0.00	35	87	0	0	16708	20423	669	0	15462	-3715
1393+50	139350	50.00	20.37	40.23	0.00	0.00	0.00	37	78	0	0	16745	20500	669	0	15462	-3755
1394+00	139400	50.00	21.53	34.27	0.00	0.00	0.00	39	69	0	0	16784	20569	669	0	15462	-3786
1394+50	139450	50.00	22.09	28.98	0.00	0.00	0.00	40	59	0	0	16824	20628	669	0	15462	-3814
1395+00	139500	50.00	22.17	25.88	0.00	0.00	0.00	41	51	0	0	16865	20679	669	0	15462	-3842
1395+50	139550	50.00	20.87	26.11	0.00	0.00	0.00	40	48	0	0	16905	20727	669	0	15462	-3864
1396+00	139600	50.00	20.35	23.26	0.00	0.00	0.00	38	46	0	0	16943	20773	669	0	15462	-3829
1396+50	139650	50.00	20.35	20.77	0.00	0.00	0.00	38	41	0	0	16981	20813	669	0	15462	-3832
1397+00	139700	50.00	21.50	11.17	0.00	0.00	0.00	39	30	0	0	17020	20843	669	0	15462	-3823
1397+50	139750	50.00	21.93	7.77	0.00	0.00	0.00	40	18	0	0	17060	20860	669	0	15462	-3801
1398+00	139800	50.00	27.79	3.37	0.00	0.00	0.00	46	10	0	0	17105	20871	669	0	15462	-3765
1398+50	139850	50.00	27.88	2.72	0.00	0.00	0.00	52	6	0	0	17157	20876	669	0	15462	-3719
1399+00	139900	50.00	26.26	4.68	0.00	0.00	0.00	52	7	0	0	17209	20883	669	0	15462	-3674
1399+50	139950	50.00	37.44	3.58	0.00	0.00	0.00	61	8	0	0	17270	20891	669	0	15462	-3621
1400+00	140000	50.00	38.08	3.31	0.00	0.00	0.00	70	6	0	0	17340	20897	669	0	15462	-3557
1400+50	140050	50.00	38.30	4.61	0.00	0.00	0.00	71	7	0	0	17411	20905	676	0	15462	-3494
1401+00	140100	50.00	36.65	14.24	0.00	0.00	0.00	69	18	21	0	17480	20922	697	0	15462	-3442
1401+50	140150	50.00	37.35	15.49	0.00	0.00	0.00	68	28	28	0	17549	20950	725	0	15462	-3401
1402+00	140200	50.00	36.26	19.17	0.00	0.00	0.00	68	32	29	0	17617	20982	754	0	15462	-3365
1402+50	140250	50.00	37.79	20.85	0.00	0.00	0.00	69	37	39	0	17685	21019	794	0	15462	-3333
1403+00	140300	50.00	30.51	28.94	0.00	0.00	0.00	63	46	30	0	17749	21065	824	0	15462	-3316
1403+50	140350	50.00	30.77	39.06	0.00	0.00	0.00	63	46	30	0	17805	21128	833	0	15462	-3322
1404+00	140400	50.00	29.62	49.12	0.00	0.00	0.00	56	82	13	0	17861	21210	846	0	15462	-3348
1404+50	140450	50.00	28.16	59.22	0.00	0.00	0.00	54	100	18	0	17915	21310	864	0	15462	-3385
1405+00	140500	50.00	27.53	71.01	0.00	0.00	0.00	52	121	17	0	17966	21431	881	0	15462	-3464
1405+50	140550	50.00	27.80	73.99	0.00	0.00	0.00	51	134	20	0	18018	21565	901	0	15462	-3547
1406+00	140600	50.00	27.78	76.99	0.00	0.00	0.00	51	140	22	0	18069	21705	923	0	15462	-3635
1406+50	140650	50.00	27.98	82.45	0.00	0.00	0.00	52	148	30	0	18121	21852	953	0	15462	-3731
1407+00	140700	50.00	27.80	86.53	0.00	0.00	0.00	52	151	31	0	18172	22003	1044	0	15462	-3831
1407+50	140750	50.00	28.34	87.05	0.00	0.00	0.00	52	155	36	0	18224	22158	1130	0	15462	-3934
1408+00	140800	50.00	29.66	87.04	0.00	0.00	0.00	54	161	29	0	18278	22319	1159	0	15462	-4041
1408+50	140850	50.00	31.23	83.03	0.00	0.00	0.00	56	157	29	0	18334	22476	1188	0	15462	-4141
1409+00	140900	50.00	22.64	81.6	0.00	0.00	0.00	50	152	15	0	18384	22637	1204	0	15462	-4243
1409+50	140950	50.00	21.93	81.4	0.00	0.00	0.00	41	151	0	0	18436	22778	1204	0	15462	-4353
1410+00	141000	50.00	21.52	82.15	0.00	0.00	0.00	40	151	0	0	18486	22930	1204	0	15462	-4464
1410+50	141050	50.00	21.26	80.72	0.00	0.00	0.00	39	149	0	0	18535	23081	1204	0	15462	-4575
1411+00	141100	50.00	20.75	80.73	0.00	0.00	0.00	38	148	0	0	18582	23230	1204	0	15462	-4686
1411+50	141150	50.00	19.98	79.1	0.00	0.00	0.00	37	142	0	0	18629	23378	1204	0	15462	-4796
1412+00	141200	50.00	20.15	74.55	0.00	0.00	0.00	36	143	0	0	18676	23520	1204	0	15462	-4901
1412+50	141250	50.00	19.23	79.51	0.00	0.00	0.00	36	148	0	0	18722	23663	1204	0	15462	-5007
1413+00	141300	50.00	19.64	80.31	0.00	0.00	0.00	36	148	0	0	18768	23811	1204	0	15462	-5119
1413+50	141350	50.00	19.28	90.99	0.00	0.00	0.00	36	159	0	0	18814	23970	1204	0	15462	-5242
1414+00	141400	50.00	17.88	104.42	0.00	0.00	0.00	34	181	0	0	18862	24151	1204	0	15462	-5388
1414+50	141450	50.00	18.21	121.12	0.00	0.00	0.00	33	209	0	0	18912	24359	1204	0	15462	-5564
1415+00	141500	50.00	17.78	144.94	0.00	0.00	0.00	33	246	0	0	18962	24606	1204	0	15462	-5777
1415+50	141550	50.00	18.15	159.75	0.00	0.00	0.00	33	282	0	0	18995	24888	1204	0	15462	-6026
1416+00	141600	50.00	17.31	163.57	0.00	0.00	0.00	33	299	0	0	18977	25187	1204	0	15462	-6292
1416+50	141650	50.00	17.64	160.52	0.00	0.00	0.00	32	300	0	0	18927	25487	1204	0	15462	-6560
1417+00	141700	26.48	17.78	174.55	0.00	0.00	0.00	17	164	0	0	18945	25652	1204	0	15462	-6707
1417+50	141750	50.00	17.77	151.52	0.00	0.00	0.00	15	142	0	0	18960	25794	1204	0	15462	-6833
1418+00	141800	50.00	17.47	155.14	0.00	0.00	0.00	33	294	0	0	18993	26078	1204	0	15462	-7084
1418+50	141850	50.00	17.47	165.66	0.00	0.00	0.00	33	297	0	0	19026	26375	1204	0	15462	-7349
1419+00	141900	50.00	19.54	166.76	0.00	0.00	0.00	34	308	0	0	19060	26682	1204	0	15462	-7622
1419+50	141950	50.00	20.43	158.79	0.00	0.00	0.00	37	301	0	0	19097	26984	1204	0	15462	-7867
1420+00	142000	35.40	21.04	158.72	0.00	0.00	0.00	27	288	0	0	19124	27192	1204	0	15462	-8068
1420+50	142050	14.60	21.00	166.11	0.00	0.00	0.00	11	86	0	0	19136	27278	1204	0	15462	-8143
1421+00	142100	50.00	21.16	166.21	0.00	0.00	0.00	39	302	0	0	19175	27580	1204	0	15462	-8406
1421+50	142150	50.00	20.42	164.15	0.00	0.00	0.00	39	306	0	0	19213	27886	1204	0	15462	-8673
1422+00	142200	50.00	19.24	157.51	0.00	0.00	0.00	37	298	0	0	19250	28184	1204	0	15462	-8934
1422+50	142250	50.00	17.92	125.94	0.00	0.00	0.00	34	262	0	0	19284	28447	1204	0	15462	-9162

PROJECT ID 1007-10-84
STAGE 2 - SB IH 39 MEDIAN
COUNTY: DANE
Hwy: IH 39
COMPUTER EARTHWORK DATA
SHEET 286
E

Addendum No. 01
 ID 1007-10-84
 Revised Sheet 287
 April 26, 2017

PROJECT ID 1007-10-84
 STAGE 2 - SB IH 39 MEDIAN

STATION	Real Station	Distance	AREA (SF)				Incremental Vol (CY) (Unadjusted)				Cumulative Vol (CY)				Mass Ordinate				
			Cut	Fill	EBS (In Cross Sections)	Excavation Marsh (In Cross Sections)	Excavation Rock (In Cross Sections)	Cut	Fill	EBS	Excavation Marsh	Excavation Rock	Cut	Fill		EBS	Excavation Marsh	Excavation Rock	
1422+00	142200	50.00	16.95	97.37	0.00	0.00	0.00	0.00	65	414	0	0	0	19249	38860	1204	0	15462	-9511
1422+50	142250	50.00	18.59	67.7	0.00	0.00	0.00	0.00	33	153	0	0	0	19382	29013	1204	0	15462	-9631
1423+00	142300	50.00	40.30	25.07	0.00	0.00	0.00	0.00	35	86	0	0	0	19436	23099	1204	0	15462	-9662
1423+50	142350	50.00	78.95	12.21	0.00	0.00	0.00	0.00	110	35	0	0	0	19547	29133	1204	0	15462	-9587
1424+00	142400	50.00	109.35	8.95	0.00	0.00	0.00	0.00	174	20	0	0	0	19721	29153	1204	0	15462	-9432
1424+50	142450	50.00	139.46	8.72	0.00	0.00	0.00	0.00	230	16	0	0	0	19951	29169	1204	0	15462	-9218
1425+00	142500	50.00	163.76	9.95	0.00	0.00	0.00	0.00	281	17	0	0	0	20232	29187	1204	0	15462	-8954
1425+50	142550	50.00	186.19	7.59	0.00	0.00	0.00	0.00	324	16	0	0	0	20556	29203	1204	0	15462	-8647
1426+00	142600	50.00	205.52	4.54	0.00	0.00	0.00	0.00	363	11	0	0	0	20919	29214	1204	0	15462	-8295
1426+50	142650	50.00	208.98	3.31	0.00	0.00	0.00	0.00	384	7	0	0	0	21303	29221	1204	0	15462	-7919
1427+00	142700	50.00	188.29	4.73	0.00	0.00	0.00	0.00	368	7	0	0	0	21671	29229	1204	0	15462	-7558
1427+50	142750	50.00	170.55	7.2	0.00	0.00	0.00	0.00	332	11	0	0	0	22003	29240	1204	0	15462	-7237
1428+00	142800	50.00	132.19	9.91	0.00	0.00	0.00	0.00	280	16	0	0	0	22283	29256	1204	0	15462	-6972
1428+50	142850	50.00	94.48	13.34	0.00	0.00	0.00	0.00	210	22	0	0	0	22493	29277	1204	0	15462	-6784
1429+00	142900	50.00	51.14	15.45	0.00	0.00	0.00	0.00	135	27	0	0	0	22628	29304	1204	0	15462	-6676
1429+50	142950	50.00	25.10	25.91	0.00	0.00	0.00	0.00	71	38	0	0	0	22698	29342	1204	0	15462	-6644
1429+62	142962	142961.861	11.86	25.08	27	0.00	0.00	0.00	11	12	0	0	0	22710	29354	1204	0	15462	-6644
1430+00	143000	38.14	20.72	23.6	0.00	0.00	0.00	0.00	32	36	0	0	0	22742	29389	1204	0	15462	-6648
1430+50	143050	50.00	21.57	23.85	0.00	0.00	0.00	0.00	39	43	0	0	0	22781	29433	1204	0	15462	-6651
1431+00	143100	50.00	22.50	22.6	0.00	0.00	0.00	0.00	41	42	0	0	0	22832	29475	1204	0	15462	-6653
1431+50	143150	50.00	23.07	21.2	0.00	0.00	0.00	0.00	42	41	0	0	0	22864	29515	1204	0	15462	-6651
1432+00	143200	50.00	23.45	19.33	0.00	0.00	0.00	0.00	43	38	0	0	0	22907	29553	1204	0	15462	-6646
1432+50	143250	50.00	24.37	15.49	0.00	0.00	0.00	0.00	44	32	0	0	0	22951	29585	1204	0	15462	-6634
1433+00	143300	50.00	24.35	13.17	0.00	0.00	0.00	0.00	45	27	0	0	0	22996	29611	1204	0	15462	-6615
1433+50	143350	50.00	30.10	3.04	0.00	0.00	0.00	0.00	50	15	0	0	0	23047	29626	1204	0	15462	-6580
1434+00	143400	50.00	57.73	0	0.00	0.00	0.00	0.00	81	3	0	0	0	23128	29629	1204	0	15462	-6501
1434+50	143450	50.00	22.90	9.19	0.00	0.00	0.00	0.00	75	9	0	0	0	23203	29638	1204	0	15462	-6435
1435+00	143500	50.00	21.77	9.74	0.00	0.00	0.00	0.00	41	18	0	0	0	23244	29655	1204	0	15462	-6411
1435+50	143550	50.00	33.73	7.67	0.00	0.00	0.00	0.00	42	18	0	0	0	23286	29673	1204	0	15462	-6387
1436+00	143600	50.00	35.73	6.89	0.00	0.00	0.00	0.00	53	16	0	0	0	23340	29689	1204	0	15462	-6349
1436+50	143650	50.00	29.78	10.06	0.00	0.00	0.00	0.00	64	13	0	0	0	23404	29702	1204	0	15462	-6299
1437+00	143700	50.00	30.62	9.81	0.00	0.00	0.00	0.00	61	16	0	0	0	23465	29718	1204	0	15462	-6254
1437+50	143750	50.00	37.85	6.53	0.00	0.00	0.00	0.00	56	18	0	0	0	23520	29737	1204	0	15462	-6216
1438+00	143800	50.00	48.40	0	0.00	0.00	0.00	0.00	63	15	0	0	0	23584	29752	1204	0	15462	-6168
1438+50	143850	50.00	43.82	0.02	0.00	0.00	0.00	0.00	80	6	0	0	0	23664	29758	1204	0	15462	-6094
1439+00	143900	50.00	37.78	50.18	3.29	0.00	0.00	0.00	85	0	0	0	0	23749	29758	1204	0	15462	-6009
1439+38	143937.82	143937.82	0	0	0.00	0.00	0.00	0.00	66	2	0	0	0	23815	29760	1204	0	15462	-5945
1439+50	143950	12.22	0	0	0.00	0.00	0.00	0.00	24	1	0	0	0	23839	29761	1204	0	15462	-5922
1439+91 BK	143991.475	41.48	0	0	0.00	0.00	0.00	0.00	44	0	0	0	0	23883	29761	1204	0	15462	-5878
1442+42 AH	144242.286	0	35.01	0	0.00	0.00	0.00	0.00	0	0	0	0	0	23883	29761	1204	0	15462	-5878
1442+50	144250	7.70	34.54	0.03	0.00	0.00	0.00	0.00	10	0	0	0	0	23957	29764	1204	0	15462	-5807
1443+00	144300	50.00	34.19	3.05	0.00	0.00	0.00	0.00	64	3	0	0	0	24020	29770	1204	0	15462	-5750
1444+00	144400	50.00	32.77	3.81	0.00	0.00	0.00	0.00	63	7	0	0	0	24083	29778	1204	0	15462	-5694
1444+50	144450	50.00	32.77	3.66	0.00	0.00	0.00	0.00	61	7	0	0	0	24145	29785	1204	0	15462	-5640
1445+00	144500	50.00	36.41	2.16	0.00	0.00	0.00	0.00	64	5	0	0	0	24209	29790	1204	0	15462	-5581
1445+50	144550	50.00	39.14	0.84	0.00	0.00	0.00	0.00	70	3	0	0	0	24279	29793	1204	0	15462	-5514
1446+00	144600	50.00	38.03	1.71	0.00	0.00	0.00	0.00	71	2	0	0	0	24350	29795	1204	0	15462	-5445
1446+50	144650	50.00	36.22	0.42	0.00	0.00	0.00	0.00	69	2	0	0	0	24419	29797	1204	0	15462	-5378
1447+00	144700	50.00	33.35	0	0.00	0.00	0.00	0.00	64	0	0	0	0	24483	29797	1204	0	15462	-5314
1447+50	144750	50.00	33.22	0	0.00	0.00	0.00	0.00	62	0	0	0	0	24545	29797	1204	0	15462	-5253
1448+00	144800	50.00	32.60	0.18	0.00	0.00	0.00	0.00	61	0	0	0	0	24606	29797	1204	0	15462	-5192
1448+50	144850	50.00	32.74	0	0.00	0.00	0.00	0.00	60	1	0	0	0	24666	29798	1204	0	15462	-5131
1449+00	144900	50.00	32.30	0.92	0.00	0.00	0.00	0.00	60	1	0	0	0	24727	29799	1204	0	15462	-5072
1449+50	144950	50.00	30.65	1.38	0.00	0.00	0.00	0.00	58	2	0	0	0	24785	29801	1204	0	15462	-5016
1450+00	145000	50.00	28.56	3.12	0.00	0.00	0.00	0.00	55	4	0	0	0	24840	29805	1204	0	15462	-4965
1450+37	145036.59	36.59	29.26	4.57	0.00	0.00	0.00	0.00	39	5	0	0	0	24879	29810	1204	0	15462	-4931
1450+50	145050	13.41	31.98	3.91	0.00	0.00	0.00	0.00	15	2	0	0	0	24894	29812	1204	0	15462	-4918
1451+00	145100	50.00	69.27	0	0.00	0.00	0.00	0.00	94	4	0	0	0	24988	29816	1204	0	15462	-4821
1451+50	145150	50.00	78.86	0	0.00	0.00	0.00	0.00	137	0	0	0	0	25123	29816	1204	0	15462	-4691
1451+65 BK	145164.978	14.98	58.12	0	0.00	0.00	0.00	0.00	38	0	0	0	0	25163	29816	1204	0	15462	-4653
1452+86 AH	145286.437	0	0	0	0.00	0.00	0.00	0.00	0	0	0	0	0	25163	29816	1204	0	15462	-4653
1453+00	145300	13.56	86.34	0	0.00	0.00	0.00	0.00	22	0	0	0	0	25185	29816	1204	0	15462	-4631

PROJECT ID: 1007-10-84 COUNTY: DANE COUNTY: DANE COMPUTER EARTHWORK DATA SHEET 287

FILE NAME: F:\ME\JDM\ELL119189\CVL11 30\10071001\Sheets\Final\10071084\SEC 09 Computer Earthwork Data\090300_ew.dwg LAYOUT NAME: 09012.EW PLOT BY: SEH INC PLOT SCALE: NIS WISDOT/CADD SHEET 49

Addendum No. 01
 ID 1007-10-84
 Revised Sheet 288
 April 26, 2017

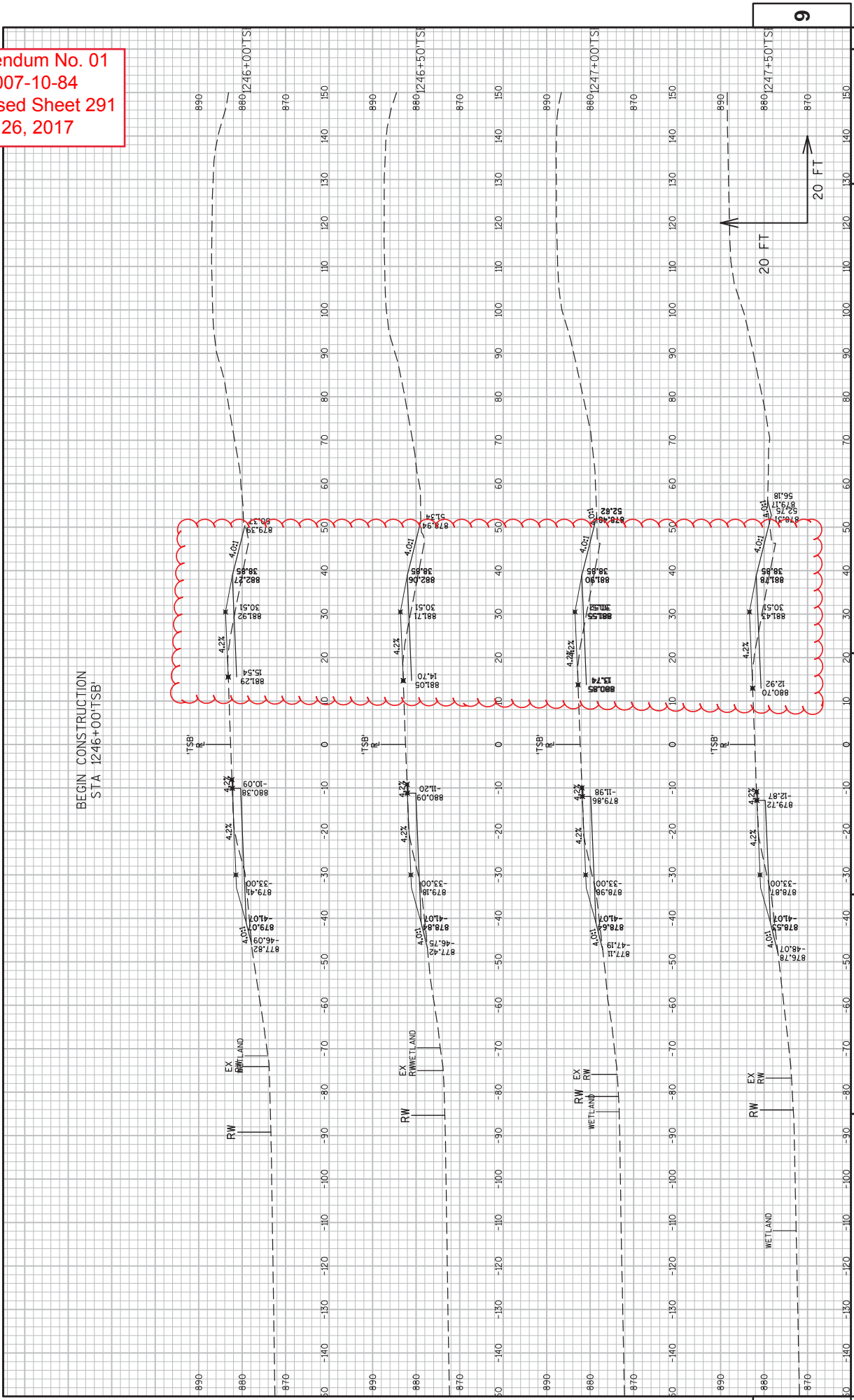
9

PROJECT ID 1007-10-84
 STAGE 2 - SB, IH, 39 MEDIAN

STATION	Real Station	Distance	AREA (SF)			Incremental Vol (CY) (Unadjusted)			Cumulative Vol (CY)			Mass Ordinate					
			Cut	Fill	EBS (In Cross Sections)	Excavation Marsh (In Cross Sections)	Excavation Rock (In Cross Sections)	Cut	Fill	EBS	Excavation Marsh		Excavation Rock				
1453+50	145350	50.00	85.20	0	0.00	0.00	0.00	0.00	318	0	0	25502	29816	1204	0	15462	-4314
1454+00	145400	36.20	63.78	0	0.00	0.00	0.00	0.00	138	0	0	25640	29816	1204	0	15462	-4176
1454+36	145436.197	3.80	34.59	3.63	0.00	0.00	0.00	0.00	66	2	0	25706	29818	1204	0	15462	-4112
1454+50	145450	13.80	26.78	8.46	0.00	0.00	0.00	0.00	16	3	0	25722	29821	1204	0	15462	-4100
1455+00	145500	50.00	21.24	13.18	0.00	0.00	0.00	0.00	45	20	0	25767	29841	1204	0	15462	-4074
1455+50	145550	50.00	20.63	12.73	0.00	0.00	0.00	0.00	40	24	0	25807	29865	1204	0	15462	-4058
1456+00	145600	50.00	21.09	9.81	0.00	0.00	0.00	0.00	39	21	0	25846	29886	1204	0	15462	-4041
1456+50	145650	50.00	21.51	7.08	0.00	0.00	0.00	0.00	39	16	0	25885	29902	1204	0	15462	-4017
1457+00	145700	50.00	21.34	6.39	0.00	0.00	0.00	0.00	40	12	0	25925	29914	1204	0	15462	-3990
1457+50	145750	50.00	20.30	7.43	0.00	0.00	0.00	0.00	39	13	0	25963	29927	1204	0	15462	-3964
1458+00	145800	50.00	20.29	8.64	0.00	0.00	0.00	0.00	38	15	0	26001	29942	1204	0	15462	-3941
1458+50	145850	50.00	20.39	10.25	0.00	0.00	0.00	0.00	38	17	0	26038	29960	1204	0	15462	-3921
1459+00	145900	50.00	19.99	12.1	0.00	0.00	0.00	0.00	37	21	0	26076	29980	1204	0	15462	-3904
1459+50	145950	50.00	20.17	14.17	0.00	0.00	0.00	0.00	37	24	0	26113	30005	1204	0	15462	-3882
1460+00	146000	50.00	19.63	18.83	0.00	0.00	0.00	0.00	37	31	0	26150	30035	1204	0	15462	-3885
1460+35	146035.181	35.18	20.46	23.27	0.00	0.00	0.00	0.00	26	27	0	26176	30063	1204	0	15462	-3887
1460+37	146037.193	2.01	20.59	23.63	0.00	0.00	0.00	0.00	2	2	0	26178	30064	1204	0	15462	-3887
1460+50	146050	12.81	18.55	25.76	0.00	0.00	0.00	0.00	9	12	0	26187	30076	1204	0	15462	-3889
1461+00	146100	50.00	18.57	31.61	0.00	0.00	0.00	0.00	34	53	0	26221	30129	1204	0	15462	-3908
1461+50	146150	50.00	18.37	33.74	0.00	0.00	0.00	0.00	34	61	0	26255	30190	1204	0	15462	-3934
1462+00	146200	50.00	18.77	34.93	0.00	0.00	0.00	0.00	34	64	0	26290	30253	1204	0	15462	-3963
1462+50	146250	50.00	19.19	33.03	0.00	0.00	0.00	0.00	35	63	0	26325	30316	1204	0	15462	-3991
1463+00	146300	50.00	19.68	28.18	0.00	0.00	0.00	0.00	36	57	0	26361	30373	1204	0	15462	-4012
1463+50	146350	50.00	21.45	23.46	0.00	0.00	0.00	0.00	38	48	0	26399	30421	1204	0	15462	-4022
1464+00	146400	50.00	21.73	19.45	0.00	0.00	0.00	0.00	40	40	0	26439	30460	1204	0	15462	-4021
1464+50	146450	50.00	22.54	14.82	0.00	0.00	0.00	0.00	41	32	0	26480	30492	1204	0	15462	-4012
1465+00	146500	50.00	24.11	10.49	0.00	0.00	0.00	0.00	43	23	0	26523	30516	1204	0	15462	-3992
1465+50	146550	50.00	26.48	7.47	0.00	0.00	0.00	0.00	47	17	0	26570	30532	1204	0	15462	-3962
1466+00	146600	50.00	28.42	6.34	0.00	0.00	0.00	0.00	51	13	0	26621	30545	1204	0	15462	-3924
1466+50	146650	50.00	28.81	5.38	0.00	0.00	0.00	0.00	53	11	0	26674	30556	1204	0	15462	-3882
1466+92 BK	146692.461	42.46	29.84	3.91	0.00	0.00	0.00	0.00	46	7	0	26720	30563	1204	0	15462	-3843
COLUMN TOTALS												26720	30563	1204	0	15462	

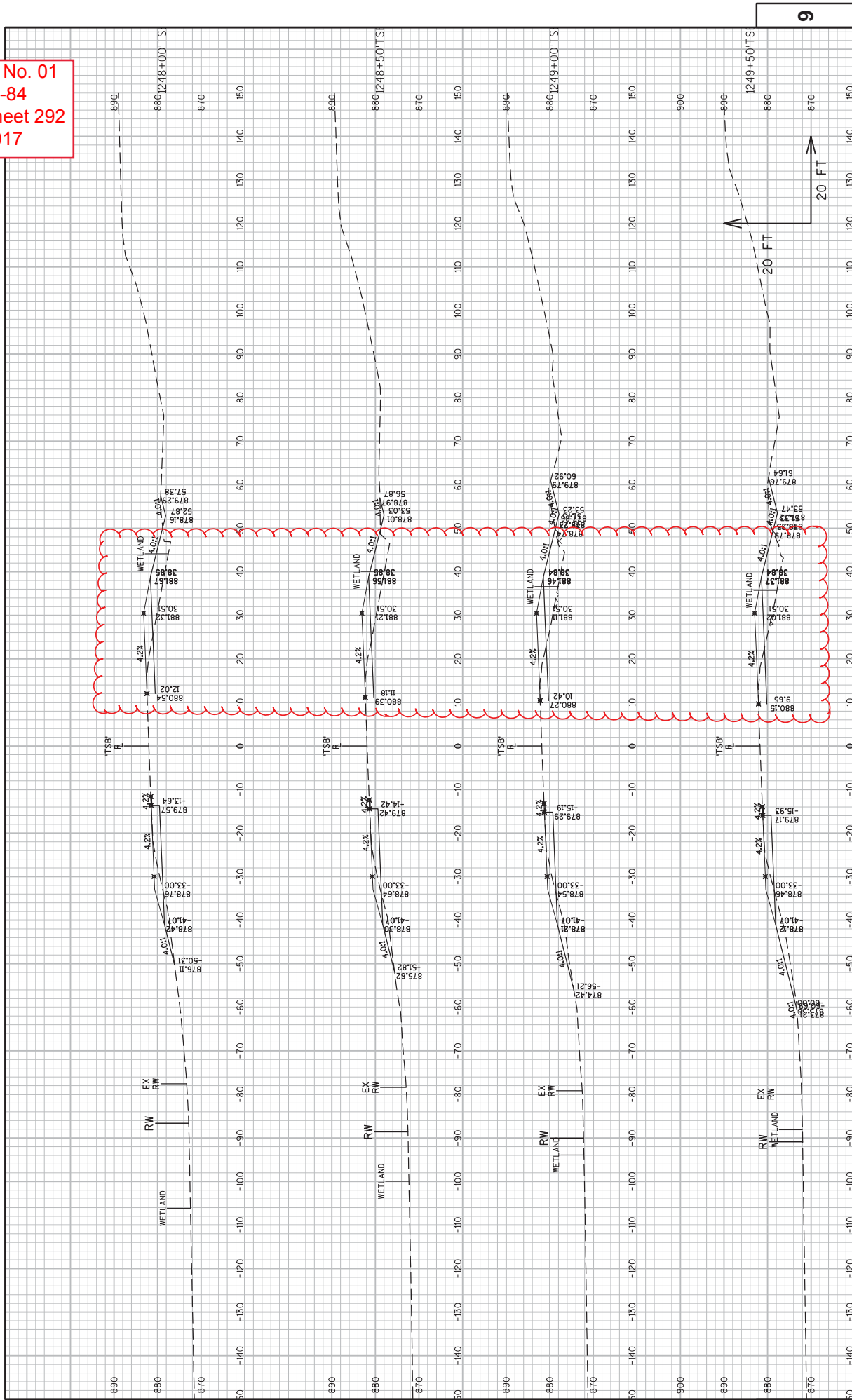
9

Addendum No. 01
 ID 1007-10-84
 Revised Sheet 291
 April 26, 2017



BEGIN CONSTRUCTION
 STA 1246+00 TSP

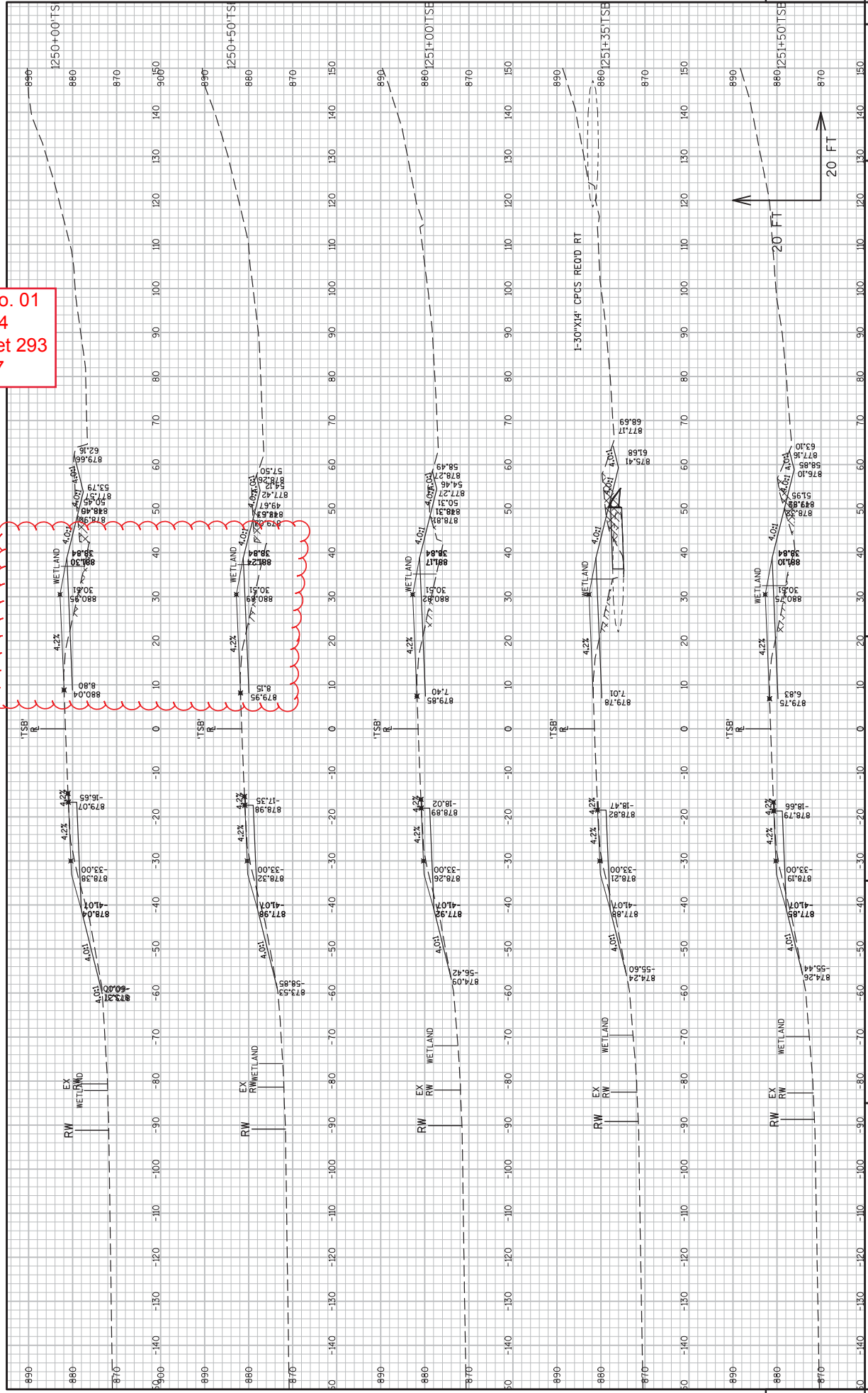
Addendum No. 01
 ID 1007-10-84
 Revised Sheet 292
 April 26, 2017

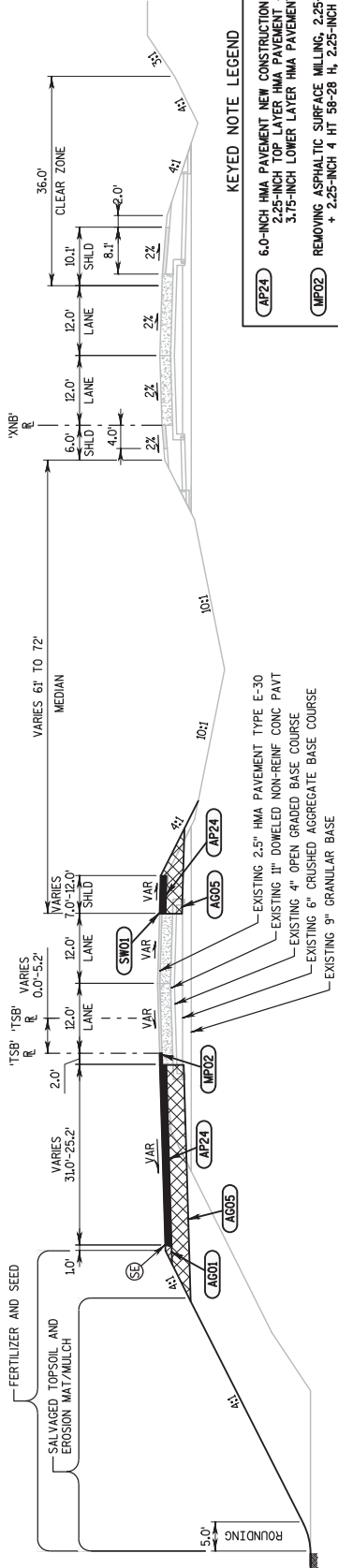


PROJECT NO: 1007-10-84
 COUNTY: DANE
 CROSS SECTIONS: IH 39 SB
 HWY: IH 39
 SHEET 292
 E

FILE NAME : F:\A\5\0\0\0\0\0\0\0\0\CIVIL_30\10071001\SHEETSP_LAN\1007108A\SEC 09 CROSS SECTIONS\VS-12\608 - 136400.DWG
 LAYOUT NAME - 09622.XS 1C
 PLOT BY : SAVANNAH STERN
 PLOT DATE : 4/24/2017 12:44 PM
 PLOT NAME :
 PLOT SCALE : 1 IN:20 FT
 WSDOT/CADD SHEET 49

Addendum No. 01
 ID 1007-10-84
 Revised Sheet 293
 April 26, 2017

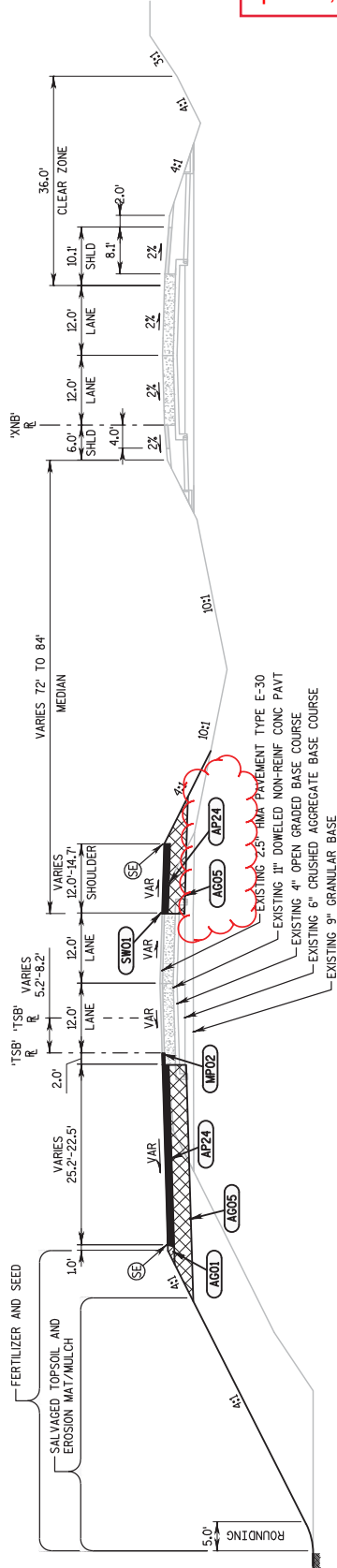




TYPICAL FINISHED SECTION
 STA 1242+27 'TSB' TO 1244+59 'TSB'

KEYED NOTE LEGEND

- AP24** 6.0-INCH HMA PAVEMENT NEW CONSTRUCTION
- 2.25-INCH TOP LAYER HMA PAVEMENT 4 HT 58-28 H
- 3.75-INCH LOWER LAYER HMA PAVEMENT 2 HT 58-28 S
- MP02** REMOVING ASPHALTIC SURFACE MILLING, 2.25-INCH
- + 2.25-INCH 4 HT 58-28 H, 2.25-INCH
- AG01** BASE AGGREGATE DENSE 3/4-INCH (6.0 OR 6.5-INCH)
- AG02** BASE AGGREGATE DENSE 1 1/4-INCH, 6-INCH
- AG05** BASE AGGREGATE DENSE 1 1/4-INCH, 17-INCH
- AG04** SELECT CRUSHED MATERIAL, 16-INCH
- SW01** SAWING ASPHALT
- SE** SAFETY EDGE (INCIDENTAL)



TYPICAL FINISHED SECTION
 STA 1244+59 'TSB' TO 1246+00 'TSB'

Addendum No. 01
 ID 1007-10-88
 Revised Sheet 16
 April 26, 2017

EARTHWORK SUMMARY

CATEGORY	STAGE	LOCATION	STATION - STATION	CUT (2) (CY)	EXCAVATION (3) (CY)	ESS (CY)	205.0220 ROCK EXCAVATION (CY)	205.0400 MARSH EXCAVATION (4) (CY)	FILL (CY)	208.1100 SELECT BORROW (6) (CY)	645.0220 GEGRID TYPE SR (SY)	SPV.0035.001 ROADWAY EMBANKMENT (CY)	MASS ORDINATE +/- (5) (CY)	COMMENTS
1000	1	BEGIN STAGE - CTH B	1036+00TSB - 1041+66TSB	540					18			18	522	
		CTH B - CTH W	1043+90TSB - 1102+27TSB	5189					66			66	5123	
		CTH W - DROTNING RD	1104+50TSB - 1169+80TSB	4410					48			48	4382	
		DROTNING RD - END STAGE	1172+35TSB - 1179+00TSB	369					176			176	190	
		STAGE SUBTOTALS		10905	0	0	0	0	308	0	0	308	10197	
2		BEGIN STAGE - CTH B	1003+74TSB - 1041+66TSB	22473					5435			5435	17038	
		CTH B - CTH W	1043+90TSB - 1102+27TSB	21753					22044			22044	-291	
		CTH W - DROTNING RD	1104+50TSB - 1169+80TSB	21043					41159			41159	-20116	
		DROTNING RD - END STAGE	1172+35TSB - 1179+00TSB	35127					50629			50629	-15702	
		CTH W - SOIL CONSOLIDATION AREA	8+75CSD - 10+80CSD	248					5			5	243	
		CSD DRIVEWAY	47+85W - 59+04B	112					69			69	43	
		CTH W	47+85W - 59+04B	105					103			103	92	
		DROTNING RD	48+51D - 54+51D	186					151			151	35	
		STAGE SUBTOTALS		101197	1520	39586	3178	3178	120486	4686	12200	120486	-18359	
3		BEGIN STAGE - CTH B	1004+50TSB - 1038+50TSB	3652					148			148	2804	
		DROTNING RD - END STAGE	1179+50TSB - 1246+00TSB	5951					409			409	5142	
		CROSSOVER XZT1	1643+57XZT1 - 1955+29XZT1	3292					510			510	2782	
		STAGE SUBTOTALS		11895	0	0	0	0	1067	0	0	1067	10828	
		UNDISTRIBUTED		16480						16480				
		CATEGORY 1000 SUBTOTALS		123937	18000	39586	3178	3178	121871	21178	30200	121871	1666	
		PROJECT TOTALS		123537	18000	39586	3178	3178	121871	21178	30200	121871	1666	

1) EXCAVATION COMMON = CUT + ESS EXCAVATION, ITEM NUMBER 205.0100.
 2) CUT VOLUME INCLUDES CONCRETE AND ASPHALTIC SURFACE MATERIAL.
 3) ESS EXCAVATION TO BE BACKFILLED WITH SELECT BORROW UNLESS OTHERWISE NOTED IN THE PLANS.
 4) EXCAVATION MARSH TO BE BACKFILLED WITH SELECT BORROW IN AREAS OF WATER AS STATED IN NOTE 6. AREAS OF MARSH EXCAVATION NOT REQUIRED TO BE FILLED WITH SELECT BORROW TO BE BACKFILLED WITH EMBANKMENT.
 5) THE MASS ORDINATE IS CALCULATED BY DIVISION. A POSITIVE QUANTITY INDICATES AN EXCESS OF MATERIAL WITHIN THE DIVISION AND A NEGATIVE QUANTITY INDICATES A SHORTAGE OF MATERIAL WITHIN THE DIVISION. STRUCTURE EXCAVATION IS NOT INCLUDED IN THIS CALCULATION.
 MASS ORDINATE = CUT-FILL. THE MASS ORDINATE IS FOR INFORMATION PURPOSES ONLY AS EXCAVATION COMMON AND ROADWAY EMBANKMENT ARE NOT BALANCED FOR QUANTITY PURPOSES AND DOES NOT GUARANTEE THE QUANTITY OF EXCAVATION COMMON, AND IF IT CAN BE REUSED ON SITE. ALL ESS MATERIAL IS ASSUMED TO BE WASTED OFFSITE.
 6) WHERE WATER IS ENCOUNTERED DURING MARSH EXCAVATION, PLACE SELECT BORROW TO AN ELEVATION 2 FEET ABOVE THE WATER LINE.

Addendum No. 01
ID 1007-10-88
Revised Sheet 150
April 26, 2017

Addendum No. 01
 ID 1007-10-88
 Revised Sheet 155
 April 26, 2017

3

TRAFFIC CONTROL

643.0200 S		643.0705		643.0715		643.0800		643.1000		643.0900	
TRAFFIC CONTROL		WARNING		WARNING		ARROW		SIGNS		SIGNS	
CATEGORY	LOCATION	STAGE	DAYS	TYPE A	TYPE C	TYPE C	BOARDS	PCMS	DAYS	DAYS	COMMENTS
1000	IH 39	1	10	8	17	170	2	3	30	26	260
	IH 39	2	70	3680	17	1160	2	140	3	252	4640
	IH 39	3	6	64	17	136	2	16	3	24	168
	UNDISTRIBUTED			96		154	44	54			102
CATEGORY 1000 SUBTOTAL				3,320		1,650	220	360			4,870
PROJECT TOTAL		88	30,400	3,320		1,650	220	360			4,870

TEMPORARY PAVEMENT MARKING

643.0402		643.0403		643.0500		
PAVEMENT MARKING		EPOXY PAINT		REMOVING		
CATEGORY	LOCATION	STAGE	DAYS	TYPE I	TYPE II	TYPE III
1000	IH 39 SB	1	14188	14196	3548	-
	IH 39 SB	2	14196	3548	0	0
	IH 39 SB	3	3429	859	-	-
	IH 39 SB	4	3429	859	0	0
CATEGORY 1000 SUBTOTAL			14188	14196	3548	0
PROJECT TOTAL		88	30,400	3,320		

TEST PITS

PROJECT NUMBER	CATEGORY	LOCATION	UNDISTRIBUTED	PROJECT TOTALS
1007-10-88	1000		20	40
*ADDITIONAL QUANTITIES SHOWN ELSEWHERE IN PLANS				
DELINEATOR/FLEXIBLE TUBULAR MARKERS				

TRAFFIC CONTROL DETOUR SIGNS

CATEGORY	NUMBER	MESSAGE	EACH	DAYS	TOTAL
1000	M1-5A	"COUNTY B"	15	70	1050
	M4-6	"END"	2	70	140
	M4-8	"DETOUR"	15	70	1050
	M05-1		5	70	350
	M05-1L		4	70	280
	M05-1R		4	70	280
STAGE SUBTOTAL					3150
1000	M1-5A	"COUNTY W"	12	55	660
	M4-6	"END"	2	55	110
	M4-8	"DETOUR"	12	55	660
	M05-1		3	55	165
	M05-1L		3	55	165
	M05-1R		4	55	220
STAGE SUBTOTAL					1980
PROJECT TOTAL					5,130

REMOVING PAVEMENT MARKINGS

CATEGORY	STAGE	STATION	LOCATION	WHITE (LF)	YELLOW (LF)	WHITE (LF)
1000	2	1037+00 TSB	SB IH 39	14200	14200	355
STAGE SUBTOTAL				14200	14200	355
1000	3	897+00 TSB	SB IH 39	3400	3400	850
STAGE SUBTOTAL				3400	3400	850
PROJECT TOTAL				3400	3400	850

SAWING PAVEMENT

CATEGORY	STAGE	STATION	LOCATION	SAWING ASPHALT (LF)	SAWING CONCRETE (LF)	REMARKS
1000	1	1098+00 TSB	MEDIAN	572	680,0150	
		1043+24 TSB	MEDIAN	6037	680,0250	
		1104+73 TSB	MEDIAN	6911		
		1171+69 TSB	MEDIAN	701		
STAGE SUBTOTAL				13,821	0	
1000	2	1003+74 TSB	LT	955		SAFETY EDGE
		1013+20 TSB	LT	-	47	MILL AND OVERLAY
		1043+68 TSB	LT	-	36	MILL AND OVERLAY
		1104+73 TSB	LT	-	104	MILL AND OVERLAY
		1171+69 TSB	RT	-	13	MILL AND OVERLAY
		48+10 B	RT	480		SHOULDER
		47+50 W	RT	530		SHOULDER
		48+49 W	RT	530		SHOULDER
		48+79 D	LT	555		SHOULDER
		49+17 D	RT	513		SHOULDER
STAGE SUBTOTAL				4063	200	
1000	3	998+76 TSB	MEDIAN	1,987	857	
		107+46 TSB	MEDIAN	1829		
		1173+00 TSB	MEDIAN	6713		
STAGE SUBTOTAL				10,529	857	
CATEGORY 1000 SUBTOTAL				28,413	1,057	
PROJECT TOTAL				28,413	1,057	

PROJECT NO: 1007-10-88

HWY: IH 39

COUNTY: DANE

MISCELLANEOUS QUANTITIES

SHEET 155

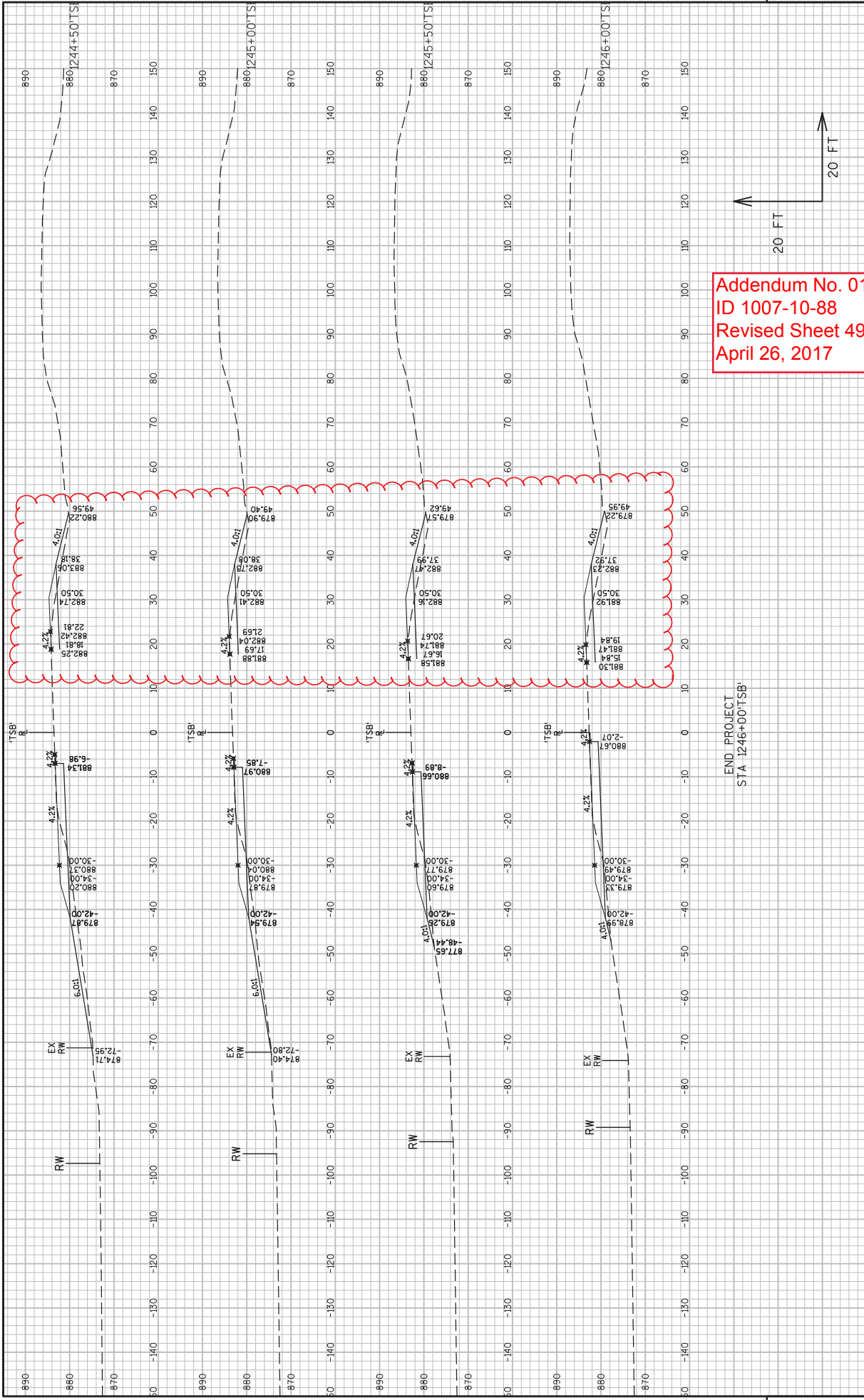
PROJECT ID 1007-10-88
STAGE 3 - SB IH 39 MEDIAN

STATION	Real Station	Distance	AREA (SF)			Incremental Vol (CY) (Unadjusted)			Cumulative Vol (CY)			Mass Ordinate		
			Cut	Fill	EBS (In Cross Sections)	Excavation Rock (In Cross Sections)	Cut	Fill	EBS	Excavation Rock	Excavation Rock			
1237+00	123700	50.00	22.32	0	0.00	0.00	7	0	0	7851	387	0	7465	
1237+50	123750	50.00	22.66	0	0.00	0.00	42	0	0	7893	387	0	7506	
1238+00	123800	50.00	22.99	0	0.00	0.00	42	0	0	7935	387	0	7548	
1238+50	123850	50.00	23.03	0	0.00	0.00	43	0	0	7978	387	0	7591	
1239+00	123900	43.14	31.01	0	0.00	0.00	50	0	0	8028	387	0	7641	
1239+40	123940	6.86	31.43	0	0.00	0.00	58	0	0	8086	387	0	7699	
1239+50	123950	50.00	25.68	0	0.00	0.00	52	0	0	8138	387	0	7751	
1240+00	124000	50.00	24.37	0	0.00	0.00	46	0	0	8184	387	0	7797	
1240+50	124050	50.00	22.86	0	0.00	0.00	38	0	0	8222	387	0	7835	
1240+51	124051.374	1.37	22.84	0	0.00	0.00	5	0	0	8227	387	0	7841	
1241+00	124100	48.63	21.83	0	0.00	0.00	41	0	0	8269	387	0	7882	
1241+50	124150	50.00	20.61	0	0.00	0.00	39	0	0	8308	387	0	7921	
1242+00	124200	50.00	20.01	0	0.00	0.00	38	0	0	8346	387	0	7959	
1242+50	124250	50.00	18.44	1.22	0.00	0.00	36	1	0	8381	388	0	7993	
1243+00	124300	50.00	16.92	5.94	0.00	0.00	33	7	0	8414	394	0	8019	
1243+50	124350	50.00	16.72	8.53	0.00	0.00	31	13	0	8445	408	0	8037	
1244+00	124400	50.00	16.91	9.97	0.00	0.00	31	17	0	8476	425	0	8051	
1244+50	124450	50.00	16.95	12.84	0.00	0.00	31	21	0	8508	446	0	8061	
1245+00	124500	50.00	17.13	17.45	0.00	0.00	32	28	0	8539	474	0	8065	
1245+50	124550	50.00	17.16	22.38	0.00	0.00	32	37	0	8571	511	0	8060	
1246+00 BK	124599.5	49.50	17.36	26.73	0.00	0.00	32	45	0	8603	557	0	8046	
			COLUMN TOTALS					8603	557	0	0	0		

PROJECT ID 1007-10-88
STAGE 3 - CROSSOVER

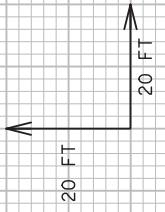
STATION	Real Station	Distance	AREA (SF)			Incremental Vol (CY) (Unadjusted)			Cumulative Vol (CY)			Mass Ordinate		
			Cut	Fill	EBS (In Cross Sections)	Excavation Rock	Cut	Fill	EBS	Excavation Rock				
1943+57 AH	194356.803	0.00	20.04	2.52	0.00	0.00	0	0	0	0	0	0	0	
1944+00	194400	43.20	25.87	8.99	0.00	0.00	37	9	0	88	33	0	55	
1944+50	194450	50.00	29.58	16.59	0.00	0.00	55	36	0	143	69	0	74	
1945+00	194500	50.00	29.81	22.06	0.00	0.00	55	48	0	198	117	0	82	
1945+50	194550	50.00	29.94	29.75	0.00	0.00	57	61	0	255	177	0	78	
1946+00	194600	50.00	31.52	35.75	0.00	0.00	60	66	0	315	244	0	71	
1946+50	194650	50.00	32.76	35.79	0.00	0.00	63	66	0	378	310	0	68	
1947+00	194700	50.00	35.65	35.97	0.00	0.00	70	66	0	448	376	0	72	
1947+50	194750	50.00	39.81	35.15	0.00	0.00	61	51	0	509	427	0	83	
1948+00	194800	50.00	26.56	19.96	0.00	0.00	47	31	0	557	458	0	99	
1948+50	194850	50.00	24.32	13.42	0.00	0.00	58	19	0	614	476	0	138	
1949+00	194900	50.00	37.83	6.75	0.00	0.00	89	12	0	703	488	0	215	
1949+50	194950	50.00	58.68	6.25	0.00	0.00	127	10	0	831	498	0	333	
1950+00	195000	50.00	79.01	4.34	0.00	0.00	163	8	0	994	506	0	488	
1950+50	195050	50.00	97.36	3.96	0.00	0.00	202	4	0	1196	510	0	687	
1951+00	195100	50.00	120.75	0	0.00	0.00	225	0	0	1421	510	0	912	
1951+50	195150	50.00	122.39	0	0.00	0.00	227	0	0	1648	510	0	1138	
1952+00	195200	50.00	122.45	0	0.00	0.00	241	0	0	1889	510	0	1380	
1952+50	195250	50.00	136.05	0	0.00	0.00	253	0	0	2142	510	0	1633	
1953+00	195300	50.00	135.16	0	0.00	0.00	246	0	0	2389	510	0	1879	
1953+50	195350	50.00	130.93	0	0.00	0.00	246	0	0	2635	510	0	2125	
1954+00	195400	50.00	135.14	0	0.00	0.00	254	0	0	2889	510	0	2380	
1954+50	195450	50.00	139.70	0	0.00	0.00	403	0	0	3252	510	0	2783	
1955+28 BK	19537.997	78.00	139.18	0	0.00	0.00	3252	510	0	3252	510	0	2783	
			COLUMN TOTALS					3252	510	0	0	0		

Addendum No. 01
ID 1007-10-88
Revised Sheet 368
April 26, 2017



Addendum No. 01
 ID 1007-10-88
 Revised Sheet 499
 April 26, 2017

END PROJECT
 STA 1246+00/TSB'





Proposal Schedule of Items

Proposal ID: 20170509001 Project(s): 1007-10-84, 1007-10-88

Federal ID(s): WISC 2017260, WISC 2017261

SECTION: 0001

Contract Items

Alt Set ID:

Alt Mbr ID:

Proposal Line Number	Item ID Description	Approximate Quantity and Units	Unit Price	Bid Amount
0160	204.0230 Removing Building (station) 001. Plat Sta 2097+15, LT	LS	LUMP SUM	_____.
0170	204.0245 Removing Storm Sewer (size) 001. 18-Inch	624.000 LF	_____.	_____.
0180	204.0245 Removing Storm Sewer (size) 002. 24-Inch	12.000 LF	_____.	_____.
0190	205.0100 Excavation Common	198,987.000 CY	_____.	_____.
0200	205.0200 Excavation Rock	55,048.000 CY	_____.	_____.
0210	205.0400 Excavation Marsh	3,858.000 CY	_____.	_____.
0220	206.1000 Excavation for Structures Bridges (structure) 700. B-13-140	LS	LUMP SUM	_____.
0230	206.1000 Excavation for Structures Bridges (structure) 701. B-13-164	LS	LUMP SUM	_____.
0240	206.1000 Excavation for Structures Bridges (structure) 702. B-13-148	LS	LUMP SUM	_____.
0250	206.1000 Excavation for Structures Bridges (structure) 703. B-13-146	LS	LUMP SUM	_____.
0260	206.2000 Excavation for Structures Culverts (structure) 800. C-13-3089	LS	LUMP SUM	_____.
0270	206.2000 Excavation for Structures Culverts (structure) 801. C-13-3084	LS	LUMP SUM	_____.
0280	206.5000 Cofferdams (structure) 800. C-13-3084	LS	LUMP SUM	_____.
0290	206.5000 Cofferdams (structure) 801. C-13-3089	LS	LUMP SUM	_____.



Proposal Schedule of Items

Proposal ID: 20170509001 Project(s): 1007-10-84, 1007-10-88

Federal ID(s): WISC 2017260, WISC 2017261

SECTION: 0001

Contract Items

Alt Set ID:

Alt Mbr ID:

Proposal Line Number	Item ID Description	Approximate Quantity and Units	Unit Price	Bid Amount
0300	208.1100 Select Borrow	33,862.000 CY	_____.	_____.
0310	210.1500 Backfill Structure Type A	1,230.000 TON	_____.	_____.
0320	210.2500 Backfill Structure Type B	1,251.000 TON	_____.	_____.
0330	213.0100 Finishing Roadway (project) 001. 1007-10-84	1.000 EACH	_____.	_____.
0340	213.0100 Finishing Roadway (project) 002. 1007-10-88	1.000 EACH	_____.	_____.
0350	305.0110 Base Aggregate Dense 3/4-Inch	4,509.000 TON	_____.	_____.
0360	305.0120 Base Aggregate Dense 1 1/4-Inch	220,505.000 TON	_____.	_____.
0370	311.0115 Breaker Run	125.000 CY	_____.	_____.
0380	312.0110 Select Crushed Material	11,625.000 TON	_____.	_____.
0390	415.0100 Concrete Pavement 10-Inch **P**	13,836.000 SY	_____.	_____.
0400	415.0410 Concrete Pavement Approach Slab **P**	560.000 SY	_____.	_____.
0410	416.0610 Drilled Tie Bars	1,771.000 EACH	_____.	_____.
0420	440.4410 Incentive IRI Ride	27,460.000 DOL	1.00000	27,460.00
0430	450.4000 HMA Cold Weather Paving	9,005.000 TON	_____.	_____.
0440	455.0605 Tack Coat	9,179.000 GAL	_____.	_____.
0450	460.2000 Incentive Density HMA Pavement	38,170.000 DOL	1.00000	38,170.00



Proposal Schedule of Items

Proposal ID: 20170509001 Project(s): 1007-10-84, 1007-10-88

Federal ID(s): WISC 2017260, WISC 2017261

SECTION: 0001

Contract Items

Alt Set ID:

Alt Mbr ID:

Proposal Line Number	Item ID Description	Approximate Quantity and Units	Unit Price	Bid Amount
0460	460.5223 HMA Pavement 3 LT 58-28 S	94.000 TON	_____.	_____.
0470	460.5224 HMA Pavement 4 LT 58-28 S	642.000 TON	_____.	_____.
0480	460.6223 HMA Pavement 3 MT 58-28 S	437.000 TON	_____.	_____.
0490	460.6224 HMA Pavement 4 MT 58-28 S	349.000 TON	_____.	_____.
0500	460.7222 HMA Pavement 2 HT 58-28 S	35,972.000 TON	_____.	_____.
0510	460.7424 HMA Pavement 4 HT 58-28 H	22,959.000 TON	_____.	_____.
0520	502.0100 Concrete Masonry Bridges **P**	1,134.300 CY	_____.	_____.
0530	502.2000 Compression Joint Sealer Preformed Elastomeric (width) 700. 2 1/2-Inch	33.000 LF	_____.	_____.
0540	502.2000 Compression Joint Sealer Preformed Elastomeric (width) 701. 2 1/2-INCH	29.000 LF	_____.	_____.
0550	502.3100 Expansion Device (structure) 700. B-13-140	LS	LUMP SUM	_____.
0560	502.3100 Expansion Device (structure) 701. B-13-164	LS	LUMP SUM	_____.
0570	502.3100 Expansion Device (structure) 702. B-13-148	LS	LUMP SUM	_____.
0580	502.3100 Expansion Device (structure) 703. B-13-146	LS	LUMP SUM	_____.
0590	502.3200 Protective Surface Treatment **P**	1,470.000 SY	_____.	_____.
0600	502.3210 Pigmented Surface Sealer	400.000 SY	_____.	_____.



Proposal Schedule of Items

Proposal ID: 20170509001 Project(s): 1007-10-84, 1007-10-88

Federal ID(s): WISC 2017260, WISC 2017261

SECTION: 0001

Contract Items

Alt Set ID:

Alt Mbr ID:

Proposal Line Number	Item ID Description	Approximate Quantity and Units	Unit Price	Bid Amount
0610	502.4204 Adhesive Anchors No. 4 Bar	122.000 EACH	_____.	_____.
0620	502.4205 Adhesive Anchors No. 5 Bar	24.000 EACH	_____.	_____.
0630	502.4206 Adhesive Anchors No. 6 Bar	74.000 EACH	_____.	_____.
0640	502.4207 Adhesive Anchors No. 7 Bar	102.000 EACH	_____.	_____.
0650	502.4208 Adhesive Anchors No. 8 Bar	32.000 EACH	_____.	_____.
0660	502.4209 Adhesive Anchors No. 9 Bar	7.000 EACH	_____.	_____.
0670	502.4210 Adhesive Anchors No. 10 Bar	8.000 EACH	_____.	_____.
0680	503.0128 Prestressed Girder Type I 28-Inch **P**	2,275.000 LF	_____.	_____.
0690	504.0100 Concrete Masonry Culverts **P**	142.000 CY	_____.	_____.
0700	505.0400 Bar Steel Reinforcement HS Structures **P**	49,620.000 LB	_____.	_____.
0710	505.0600 Bar Steel Reinforcement HS Coated Structures **P**	158,900.000 LB	_____.	_____.
0720	506.2605 Bearing Pads Elastomeric Non-Laminated	6.000 EACH	_____.	_____.
0730	506.2610 Bearing Pads Elastomeric Laminated	52.000 EACH	_____.	_____.
0740	506.4000 Steel Diaphragms (structure) 700. B-13-140 **P**	9.000 EACH	_____.	_____.
0750	506.4000 Steel Diaphragms (structure) 701. B-13-164 **P**	6.000 EACH	_____.	_____.



Proposal Schedule of Items

Proposal ID: 20170509001 Project(s): 1007-10-84, 1007-10-88

Federal ID(s): WISC 2017260, WISC 2017261

SECTION: 0001

Contract Items

Alt Set ID:

Alt Mbr ID:

Proposal Line Number	Item ID Description	Approximate Quantity and Units	Unit Price	Bid Amount
1460	614.2300 MGS Guardrail 3	1,175.000 LF	_____.	_____.
1470	614.2500 MGS Thrie Beam Transition	118.000 LF	_____.	_____.
1480	614.2610 MGS Guardrail Terminal EAT	3.000 EACH	_____.	_____.
1490	616.0100 Fence Woven Wire (height) 001. 4-Ft **p**	39,980.000 LF	_____.	_____.
1500	616.0700.S Fence Safety	400.000 LF	_____.	_____.
1510	618.0100 Maintenance And Repair of Haul Roads (project) 001. 1007-10-84	1.000 EACH	_____.	_____.
1520	618.0100 Maintenance And Repair of Haul Roads (project) 002. 1007-10-88	1.000 EACH	_____.	_____.
1530	619.1000 Mobilization	1.000 EACH	_____.	_____.
1540	624.0100 Water	2,791.000 MGAL	_____.	_____.
1550	625.0500 Salvaged Topsoil	230,390.000 SY	_____.	_____.
1560	627.0200 Mulching	201,740.000 SY	_____.	_____.
1570	628.1104 Erosion Bales	1,000.000 EACH	_____.	_____.
1580	628.1504 Silt Fence	24,700.000 LF	_____.	_____.
1590	628.1520 Silt Fence Maintenance	24,700.000 LF	_____.	_____.
1600	628.1905 Mobilizations Erosion Control	12.000 EACH	_____.	_____.
1610	628.1910 Mobilizations Emergency Erosion Control	7.000 EACH	_____.	_____.



Proposal Schedule of Items

Proposal ID: 20170509001 Project(s): 1007-10-84, 1007-10-88

Federal ID(s): WISC 2017260, WISC 2017261

SECTION: 0001

Contract Items

Alt Set ID:

Alt Mbr ID:

Proposal Line Number	Item ID Description	Approximate Quantity and Units	Unit Price	Bid Amount
2100	ASP.1T0A On-the-Job Training Apprentice at \$5.00/HR	1,350.000 HRS	5.00000	6,750.00
2110	ASP.1T0G On-the-Job Training Graduate at \$5.00/HR	2,400.000 HRS	5.00000	12,000.00
2120	SPV.0035 Special 001. Roadway Embankment	164,240.000 CY		
2130	SPV.0060 Special 001. Baseline CPM Progress Schedule	1.000 EACH		
2140	SPV.0060 Special 002. CPM Progress Schedule Updates and Accepted Revisions	10.000 EACH		
2150	SPV.0060 Special 003. Test Pits	34.000 EACH		
2160	SPV.0060 Special 700. Cleaning and Painting Bearings	10.000 EACH		
2170	SPV.0090 Special 001. Fill Existing Rumble Strips	1,154.000 LF		
2180	SPV.0090 Special 002. Furnishing Temporary Snow Fence	8,390.000 LF		
2190	SPV.0090 Special 003. Installing Temporary Snow Fence	8,390.000 LF		
2200	SPV.0090 Special 150. Compost Tube	1,530.000 LF		
2210	SPV.0090 Special 200. Traffic Control Gawk Screen Furnished	1,665.000 LF		
2220	SPV.0090 Special 201. Traffic Control Gawk Screen Installed	1,665.000 LF		
2230	SPV.0090 Special 202. Concrete Barrier Temporary Precast Left In Place	4,264.000 LF		

