



Wisconsin Department of Transportation

January 7, 2015

Division of Transportation Systems Development

Bureau of Project Development
4802 Sheboygan Avenue, Rm 601
P O Box 7916
Madison, WI 53707-7916

Telephone: (608) 266-1631
Facsimile (FAX): (608) 266-8459

NOTICE TO ALL CONTRACTORS:

Proposal #11: 1133-10-71, WISC 2015 008
DePere - Suamico
Memorial Drive – CTH M
Memorial Dr-Duck Crk NB/IH43 Intchg
USH 41
Brown County

Letting of January 13, 2015

This is Addendum No. 2, which provides for the following:

Special Provisions

| Revised Special Provisions | |
|----------------------------|-------------------------------------|
| Article No. | Description |
| 8.1 | Utilities |
| 8.3 | Railroad Insurance and Coordination |

Schedule of Items

| Revised Bid Item Quantities | | | | | |
|-----------------------------|--|------|------------------|------------------|----------------|
| Bid Item | Item Description | Unit | Old Quantity | Revised Quantity | Proposal Total |
| 204.0100 | Removing Pavement | SY | 34,990 | 35,040 | 35,040 |
| 204.0115 | Removing Asphaltic Surface Butt Joints | SY | 169 | 88 | 88 |
| 204.0120 | Removing Asphaltic Surface Milling | SY | 3,569 | 4,903 | 4,903 |
| 205.0100 | Excavation Common | CY | 131,847 **P** | 131,847 | 131,847 |
| 305.0110 | Base Aggregate Dense ¾-Inch | Ton | 20,670 | 20,930 | 20,930 |
| 305.0120 | Base Aggregate Dense 1 ¼-Inch | Ton | 87,290 | 87,890 | 87,890 |
| 311.0110 | Breaker Run | Ton | 165,608 | 166,198 | 166,198 |
| 616.0100 | Fence Woven Wire (height) 001. 4-Ft | LF | 7,772 | 20 | 20 |
| 616.0206 | Fence Chain Link 6-FT | LF | 1,721 | 4,015 | 4,015 |
| 645.0111 | Geotextile Fabric Type DF Schedule A | SY | 1,185 **P** | 1,185 | 1,185 |

| Added Bid Item Quantities | | | | | |
|----------------------------------|---|------|--------------|------------------|----------------|
| Bid Item | Item Description | Unit | Old Quantity | Revised Quantity | Proposal Total |
| 310.0110 | Base Aggregate Open Graded | Ton | 0 | 1,550 | 1,550 |
| 511.2200 | Temporary Shoring Left in Place (structure) 006. B-05-669 | SF | 0 | 1,200 | 1,200 |
| 645.0112 | Geotextile Fabric Type DF Schedule B | SY | 0 | 2,315 | 2,315 |

| Deleted Bid Item Quantities | | | | | |
|------------------------------------|--|------|--------------|------------------|----------------|
| Bid Item | Item Description | Unit | Old Quantity | Revised Quantity | Proposal Total |
| 204.9090.S | Removing (Item Description) 001. Temporary Shoring Left In Place | LF | 150 | 0 | 0 |
| 511.1200 | Temporary Shoring (structure) 002. B-05-669 | SF | 600 | 0 | 0 |

Plan Sheets

| Revised Plan Sheets | |
|----------------------------|--|
| Plan Sheet | Plan Sheet Title (brief description of changes to sheet) |
| 53 | Removal Plan – Deleted Removing Temporary Shoring |
| 463 | Miscellaneous Quantities – Revised Removing Asphaltic Surface Butt Joints and Removing Asphaltic Surface Mill |
| 467 | Miscellaneous Quantities – Revised Base Aggregate Dense and Breaker Run, Deleted Removing Temporary Shoring Left in Place. |
| 485 | Miscellaneous Quantities – Revised Fence Woven Wire 4-FT and Fence Chain Link |
| 750 | Structure B-5-669 – Deleted Quantity for Temporary Shoring. Added Quantity for Temporary Shoring Left in Place |
| 833 | Structure B-5-81 – Added Quantities for Base Aggregate Open Graded and Geotextile Fabric Type DF Schedule B |
| 834 | Structure B-5-81 – Revised Typical Wall |
| 940 | Computer Earthwork Data – Added Label |

The responsibility for notifying potential subcontractors and suppliers of these changes remains with the prime contractor.

Sincerely,

Mike Coleman

Proposal Development Specialist
Proposal Management Section

ADDENDUM NO. 2

1133-10-71

January 7, 2015

Special Provisions

8.1 Utilities

Add the following paragraph to Green Bay Metropolitan Sewerage District (GBMSD):

During construction GBMSD plans to install new sanitary sewer facilities crossing USH 41 at approximately STA 1181'VEC'+50. The work is tentatively scheduled for August 2015 to December 2016. GBMSD will have work areas southeast of USH 41 adjacent to North Memorial Drive and northwest of USH 41 at the north end of the Project Access Road. Coordinate with GBMSD as needed.

8.3 Railroad Insurance and Coordination

Replace the entire article language with the following:

A Description

Comply with standard spec 107.17 for all work affecting Wisconsin Central Ltd. property and any existing tracks.

A.1 Railroad Insurance Requirements

In addition to standard spec 107.26, provide railroad protective liability insurance coverage as specified in standard spec 107.17.3. Insurance is filed in the name of Wisconsin Central Ltd. (d.b.a. Canadian National).

Notify evidence of the required coverage, and duration to Jackie Macewicz, Manager Public Works at 1625 Depot St., Stevens Point, WI, 54481. Include the following information on the insurance document:

Project Id: 1133-10-71
Route Name: USH 41 and IH 43 interchange, Brown County
Limits: Memorial Dr. – Duck Creek, NB IH 43 Interchange
Crossing ID: 188337B
Railroad Subdivision: Manistique
Railroad Milepost: 3.7

A.2 Work by Railroad

The railroad will perform the work described in this section, except for work described in other special provisions and will be accomplished without cost to the contractor. None

A.3 Names and addresses of Railroad Representatives for Consultation and Coordination

Contact Jackie Macewicz, Manager Public Works, 1625 Depot St., Stevens Point, WI, 54481; TELEPHONE (715) 345-2503; FAX (715) 345-2534; email jackie.macewicz@cn.ca for consultation on railroad requirements during construction.

Contact Mary Ellen Carmody, Audit Officer, Administration Service Center, 700 Pershing Street, Pontiac, MI 48340; TELEPHONE (248) 452-4705; FAX (248) 452-4972; email maryellen.carmody@cn.ca for flagging arrangements. Advise Ms. Carmody that the flagging services are to be billed at the rate for a public highway project.

Amend standard spec 108.4 to include the railroad in the distribution of the initial bar chart, and monthly schedule updates. The bar chart shall specifically show work involving coordination with the railroad.

A.4 Temporary Grade Crossing

If a temporary grade crossing is desired, submit a written request to the railroad representative named in A.3 several weeks prior to the time needed. Approval is subject to the discretion of the railroad. The department has made no arrangements for a temporary grade crossing.

A.5 Train Operation

Approximately 8 through freight trains operate daily through the construction site. Through freight trains operate at up to 20 mph.

B Railroad Flagging

Arrange with the railroad for the flagging of trains and safety of railroad operations if clearances specified in subsection 107.17.1 are not maintained during construction operations. The following conditions may also warrant flagging:

1. Cranes swinging or handling materials or equipment within 25 feet of the centerline of any track.
2. Construction operations that are in proximity of power lines or railroad signal and communication lines, underground cables, fuel oil facilities or pipe lines and which might result in fire or damage to such facilities, danger to railroad operations or danger to the public in the transaction of business on railroad premises.
3. Excavation, tunneling, blasting, pile driving, placing, or removing cofferdams or sheeting, or similar activities might cause the railroad's tracks or buildings to be undermined, heaved out of normal level, shifted out of alignment, or otherwise impaired.
4. Bridge painting activities including rigging of falsework, scaffolding or similar activities within 25 feet of the centerline of any track.
5. Deck removal activities within 25 feet of the centerline of any track.
6. Pouring of bridge decks in spans over an operated track.
7. At any other time in railroad representative's judgment, the contractor's work or operations constitute an intrusion into the track zone and create an extraordinary hazard to railroad traffic, and at any other time when flagging protection is necessary for safety to comply with the operating rules of the railroad.

Projects with concurrent activity may require more than one flagger.

Projects with heavy contractor activity within 25 feet of the centerline of any track or unusual or heavy impact on railroad facilities will normally require a full-time flagger.

The department and railroad will monitor operations for compliance with the above flagging requirements. Violations may result in removal from railroad property until arrangements to adhere to the flagging requirements are satisfied. If the railroad imposes additional flagging requirements beyond the above flagging requirements due to the previous violations, the contractor shall bear all costs of the additional flagging requirements.

C Flagging by Railroad– Railroad Does Not Pay Flagging Costs

C.1 General

Replace paragraph (3) of standard spec 107.17.1 with the following:

Comply with the railroad's rules and regulations regarding operations on railroad right-of-way. If the railroad's chief engineering officer requires, arrange with the railroad to obtain the services of qualified railroad employees to protect railroad traffic through the work area. Bear the cost of these services and make payment directly to the railroad. Notify the appropriate railroad representative as

listed in section A.3 above, in writing, at least five business days before starting work near a track. Provide the specific time planned to start the operations.

Extended Duration Work or Longer Work Day

Work that requires railroad flaggers to occupy the work zone for longer duration or longer than the normal work day will require 40 day written notice to the railroad.

C.2 Rates – Canadian National (WCL, SSMBRCo, DM&IR, DWP)

The following rates, reimbursement provisions, and excluded conditions will be used to determine the contractor's cost of flagging:

\$1,000 daily rate (including wages, labor surcharges, meals, lodging, vehicle and mileage expenses) for a minimum eight-hour flagging day at the job site;

\$1,200 daily rate (including wages, labor surcharges, meals, lodging, vehicle and mileage expenses) for a minimum eight-hour flagging day at the job site on Saturdays, Sundays or holidays;

\$150 per hour overtime rate for all time worked before or after the eight hour flagging day.

The flagger is required to set flags each day in advance of the contractor commencing work that will require flagging. The flagger must also remove the flags each day after the completion of work that required flagging. Any time worked before or after the minimum eight-hour flagging day to set or remove flags will be billed at the overtime rate. The contractor is responsible for knowing the requirements of the railroad for arranging and terminating flagging services and for the associated costs of those services.

C.3 Reimbursement Provisions

The actual cost for flagging will be billed by the railroad. After the completion of the work requiring flagging protection as provided in section B above, the department will reimburse 50% of the cost of such services up to the rates provided above based on paid railroad invoices, except for the excluded conditions enumerated below. In the event actual flagging rates exceed the rates stated above, the department will reimburse 100% of the portion of the rate that is greater than the rates stated above.

C.4 Excluded Conditions

The department will not reimburse any of the cost for additional flagging attributable to the following:

1. Additional flagging requirements imposed by the railroad beyond the flagging requirements provided in subsection B above due to violations by the contractor.
2. Temporary construction crossings arranged for by the contractor.

The contractor shall bear all costs of the additional flagging requirements for the excluded conditions.

C.5 Payment for Flagging

Railroads may issue progressive bills. Notify the railroad when the work is completed and request a final bill from the railroad. The railroad will issue a final bill. Promptly pay railroad-flagging bills, less any charges that may be in dispute. The department will pay for flagging reimbursement under the Railroad Flagging Reimbursement administrative item. The department will withhold flagging reimbursement until any disputed charges are resolved and the final bill is paid. No reimbursement for flagging will be made by the department if a violation of subsection B is documented.

107-034 (20130615)

Schedule of Items

Attached, dated January 7, 2015, are the revised Schedule of Items Pages 1 – 34.

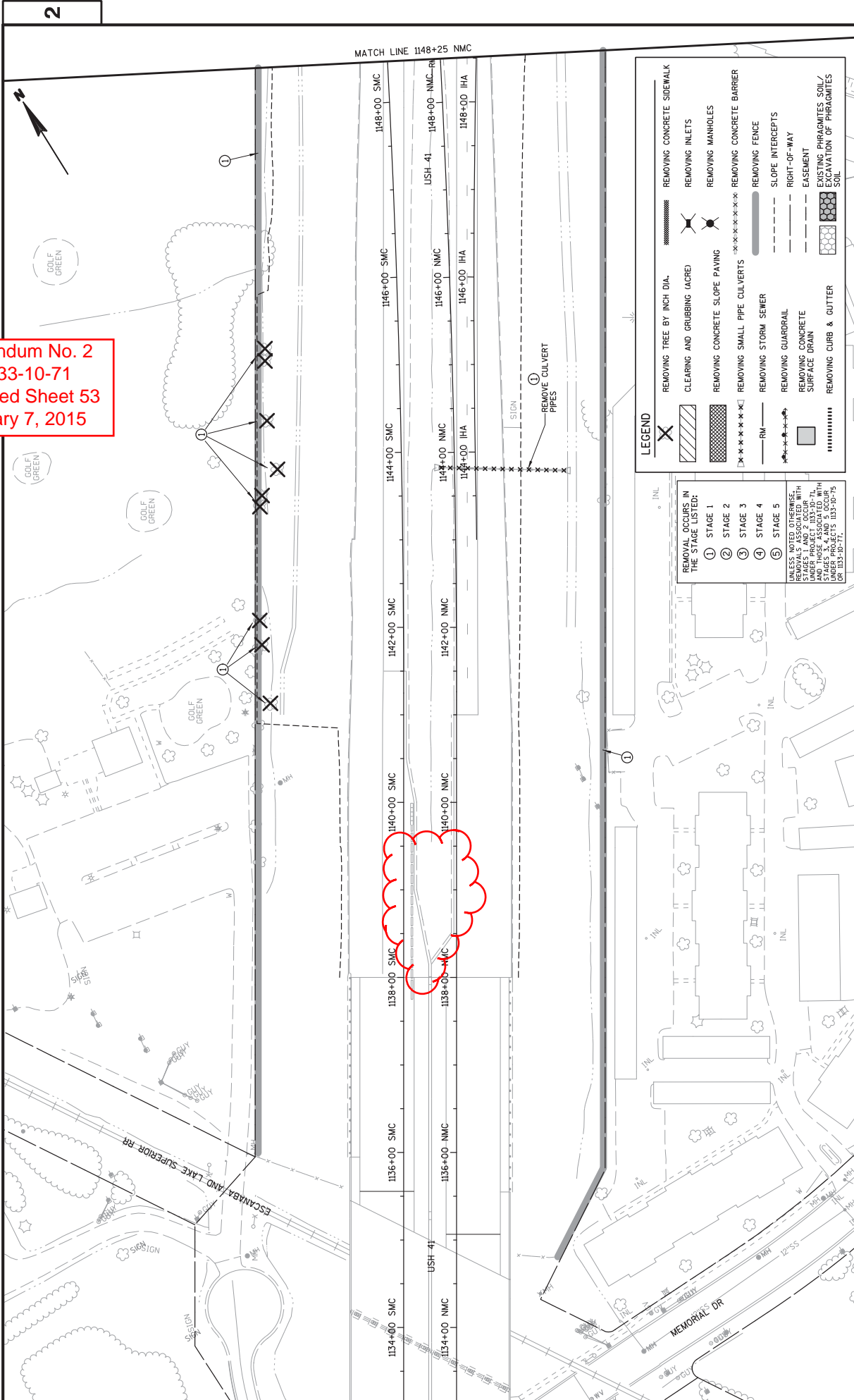
Plan Sheets

The following 8½ x 11-inch sheets are attached and made part of the plans for this proposal:

Revised: 53, 463, 467, 485, 750, 833, 834, and 940.

END OF ADDENDUM

Addendum No. 2
 ID 1133-10-71
 Revised Sheet 53
 January 7, 2015



LEGEND

| | | | |
|--|---------------------------------|--|-------------------------------|
| | REMOVING TREE BY INCH DIA. | | REMOVING CONCRETE SIDEWALK |
| | CLEARING AND GRUBBING (ACRE) | | REMOVING INLETS |
| | REMOVING CONCRETE SLOPE PAVING | | REMOVING MANHOLES |
| | REMOVING SMALL PIPE CULVERTS | | REMOVING CONCRETE BARRIER |
| | REMOVING STORM SEWER | | REMOVING FENCE |
| | REMOVING GUARDRAIL | | SLOPE INTERCEPTS |
| | REMOVING CONCRETE SURFACE DRAIN | | RIGHT-OF-WAY |
| | REMOVING CURB & GUTTER | | EASEMENT |
| | | | EXISTING PHRAGMITES SOIL |
| | | | EXCAVATION OF PHRAGMITES SOIL |

REMOVAL OCCURS IN THE STAGE LISTED:

- STAGE 1
- STAGE 2
- STAGE 3
- STAGE 4
- STAGE 5

UNLESS OTHERWISE SPECIFIED, REMOVALS ASSOCIATED WITH STAGES 1 AND 2 OCCUR WITHIN THE EXISTING RIGHT-OF-WAY AND THOSE ASSOCIATED WITH STAGES 3, 4 AND 5 OCCUR WITHIN THE EXISTING EASEMENT OR 1133-10-71.

CLEARING AND GRUBBING

| STATION | ROADWAY | RT/LT | SY | 201.0110 | 201.0120 | 201.0210 | 201.0220 |
|--------------------------|---------|-------|--------------|------------|--------------|------------|------------|
| | | | CLEARING | CLEARING | GRUBBING | GRUBBING | ID |
| 1141+13 | SMC | LT | -- | 12 | -- | 12 | 12 |
| 1141+81 | SMC | LT | -- | 12 | -- | 12 | 12 |
| 1142+10 | SMC | LT | -- | 12 | -- | 12 | 12 |
| 1143+41 | SMC | LT | -- | 12 | -- | 12 | 12 |
| 1143+54 | SMC | LT | -- | 12 | -- | 12 | 12 |
| 1143+84 | SMC | LT | -- | 12 | -- | 12 | 12 |
| 1144+40 | SMC | LT | -- | 12 | -- | 12 | 12 |
| 1145+09 | SMC | LT | -- | 12 | -- | 12 | 12 |
| 1145+22 | SMC | LT | -- | 12 | -- | 12 | 12 |
| 1171+00 | SMC | LT | 1166 | -- | -- | 1166 | -- |
| 1208+58 | NMC | LT | 629 | -- | 619 | -- | 108 |
| STAGE 1 SUBTOTALS | | | 1,795 | 108 | 1,785 | 108 | 108 |

| STATION | ROADWAY | RT/LT | SY | 201.0110 | 201.0120 | 201.0210 | 201.0220 |
|----------------------------------|---------|-------|--------------|------------|--------------|------------|------------|
| | | | CLEARING | CLEARING | GRUBBING | GRUBBING | ID |
| 1144+74 | SIH | LT | -- | 12 | -- | 12 | 12 |
| 1148+87 | NIH | RT | -- | 12 | -- | 12 | 12 |
| 1149+33 | NIH | RT | -- | 12 | -- | 12 | 12 |
| 1150+72 | NIH | RT | -- | 12 | -- | 12 | 12 |
| 1154+04 | SIH | LT | -- | 12 | -- | 12 | 12 |
| 1158+37 | SIH | LT | -- | 12 | -- | 12 | 12 |
| 1154+08 | NIH | RT | -- | 12 | -- | 12 | 12 |
| 1184+81 | NIH | RT | -- | 12 | -- | 12 | 12 |
| 1197+28 | IHA | RT | 134 | -- | 134 | -- | -- |
| 1198+94 | IHA | RT | -- | 12 | -- | 12 | 12 |
| 1199+50 | IHA | RT | -- | 12 | -- | 12 | 12 |
| 1199+58 | IHA | RT | -- | 12 | -- | 12 | 12 |
| 1199+76 | IHA | RT | -- | 12 | -- | 12 | 12 |
| 1199+83 | IHA | RT | -- | 12 | -- | 12 | 12 |
| 1199+91 | IHA | RT | -- | 12 | -- | 12 | 12 |
| 1200+00 | IHA | RT | -- | 12 | -- | 12 | 12 |
| 1200+17 | IHA | RT | -- | 12 | -- | 12 | 12 |
| 1200+22 | IHA | RT | -- | 12 | -- | 12 | 12 |
| 1200+49 | IHA | RT | -- | 12 | -- | 12 | 12 |
| 1200+58 | IHA | RT | -- | 12 | -- | 12 | 12 |
| 1200+76 | IHA | RT | -- | 12 | -- | 12 | 12 |
| 1202+25 | IHA | RT | -- | 12 | -- | 12 | 12 |
| 1202+86 | IHA | RT | -- | 12 | -- | 12 | 12 |
| 1202+99 | IHA | RT | -- | 12 | -- | 12 | 12 |
| 1203+20 | IHA | RT | -- | 12 | -- | 12 | 12 |
| 1203+70 | IHA | RT | -- | 12 | -- | 12 | 12 |
| 1203+79 | IHA | RT | -- | 12 | -- | 12 | 12 |
| 1203+98 | IHA | RT | -- | 12 | -- | 12 | 12 |
| STAGE 2 SUBTOTALS | | | 134 | 324 | 134 | 324 | 324 |
| PROJECT 1133-10-71 TOTALS | | | 1,929 | 432 | 1,919 | 432 | 432 |

REMOVING PAVEMENTS

| STATION | LOCATION | OFFSET | SY | 204.0100 | 204.0110 | 204.0115 | 204.0120 |
|----------------------------------|-----------|--------|-------------------|----------------------------|--|------------------------------------|-----------------------------------|
| | | | REMOVING PAVEMENT | REMOVING ASPHALTIC SURFACE | REMOVING ASPHALTIC SURFACE BUTT JOINTS | REMOVING ASPHALTIC SURFACE MILLING | REMARKS |
| 1138+00 | NMC | LT | -- | 1333 | -- | -- | SHOULDER WIDENING |
| 1199+67 | NMC | LT-RT | 270 | -- | -- | -- | STORM SEWER CROSSINGS |
| 1152+00 | TWD | RT | 250 | -- | -- | -- | |
| 120+50 | MIL | LT-RT | 60 | -- | -- | -- | |
| 121+50 | MIL | LT-RT | 60 | -- | -- | -- | |
| 121+65 | MIL | LT-RT | 60 | -- | -- | -- | |
| STAGE 1 SUBTOTALS | | | 520 | 120 | 0 | 1,333 | |
| STAGE 2 | | | | | | | |
| 1141+00 | NMC | LT-RT | 8,350 | -- | -- | -- | |
| 1172+85 | NMC | LT-RT | 1,830 | -- | -- | -- | |
| 1181+41 | NMC | LT-RT | 6,380 | -- | -- | -- | |
| 1246+00 | NMC | LT-RT | 680 | -- | -- | -- | ORIGINAL NB ON RAMP FROM VEP |
| 1184+11 | NMC | LT-RT | 4,100 | -- | -- | -- | |
| 1172+00 | NIH | LT | 910 | -- | -- | -- | |
| 1179+00 | NIH | LT | 67 | -- | -- | 2,367 | |
| 1142+75 | SIH - IHA | LT | 8,240 | -- | -- | -- | |
| 1200+50 | SIH - IHA | LT-RT | 4,030 | -- | -- | -- | OB2 ALIGNMENT, OLD SB 41 TO SB 43 |
| 1195+75 | IHA | RT | 10 | -- | -- | 656 | TEMP CONNECTION TO VEP |
| 1173+10 | VEA | RT | 7 | -- | -- | 300 | TEMP CONNECTION TO VEP |
| 1175+70 | VEB | LT-RT | 4 | -- | -- | 247 | TEMP CONNECTION TO VEP |
| 1169+55 | VED | RT | 34,520 | 0 | 88 | 3,570 | |
| STAGE 2 SUBTOTALS | | | 35,040 | 120 | 88 | 4,903 | |
| PROJECT 1133-10-71 TOTALS | | | | | | | |

REMOVING CONCRETE SLOPE PAVING

| STATION | LOCATION | OFFSET | SY |
|----------------------------------|----------|--------|------------|
| 1172+83 | NMC | LT-RT | 130 |
| 1174+08 | NMC | LT-RT | 134 |
| PROJECT 1133-10-71 TOTALS | | | 264 |

REMOVING OLD STRUCTURE

| STATION | LOCATION | DESCRIPTION | SY |
|----------------------------------|----------|-------------|----------|
| 1197+00 | IHA | LT | 1 |
| 1197+00 | IHA | LT | 1 |
| PROJECT 1133-10-71 TOTALS | | | 1 |

Addendum No. 2
ID 1133-10-71
Revised Sheet 463
January 7, 2015

GUARDRAIL MOW STRIP EMULSIFIED ASPHALT

614.0397

| STATION | - | STATION | LOCATION | OFFSET | SY |
|--------------------|---|---------|----------|--------|-------|
| STAGE 1 | | | | | |
| 1138+00 | - | 1158+00 | NMC-IHA | RT | 890 |
| STAGE 1 SUBTOTALS | | | | | |
| | | | | | 890 |
| STAGE 2 | | | | | |
| 1138+00 | | 1156+54 | SMC | LT | 829 |
| 1149+01 | | 1151+80 | NIH | RT | 100 |
| 1149+38 | | 1158+11 | SIH | LT | 367 |
| 1165+55 | | 1176+65 | IHB | RT | 468 |
| 1173+04 | | 1176+15 | IHB | LT | 140 |
| 1180+24 | | 1187+06 | NIH | RT | 279 |
| 1197+35 | | 1197+99 | IHA | RT | 29 |
| STAGE 2 SUBTOTALS | | | | | |
| | | | | | 2,210 |
| PROJECT 1133-10-71 | | | | | |
| | | | | | 3,100 |

GUARDRAIL ITEMS

614.2300 MGS GUARDRAIL 3
 614.2500 MGS THRIE BEAM TRANSITION
 614.2610 MGS GUARDRAIL TERMINAL EAT EACH
 614.2620 MGS GUARDRAIL TERMINAL TYPE 2 EACH

| STATION | - | STATION | LOCATION | OFFSET | LF | LF | EAT | TYPE 2 |
|--------------------|---|---------|----------|--------|--------|-------|-----|--------|
| STAGE 1 | | | | | | | | |
| 1138+00 | - | 1158+00 | NMC-IHA | RT | 1962.5 | 39.5 | 0 | 0 |
| STAGE 1 SUBTOTALS | | | | | | | | |
| | | | | | 1962.5 | 39.5 | 0 | 0 |
| STAGE 2 | | | | | | | | |
| 1138+00 | | 1156+54 | SMC | LT | 1825 | 39.5 | -- | -- |
| 1149+01 | | 1151+80 | NIH | RT | 225 | -- | 1 | 1 |
| 1149+38 | | 1158+11 | SIH | LT | 825 | -- | 1 | 1 |
| 1153+44 | | 1153+65 | IHA | LT | -- | -- | -- | -- |
| 1162+54 | | 1162+75 | VEA | LT | -- | -- | -- | -- |
| 1165+55 | | 1176+65 | IHB | RT | 1012.5 | 39.5 | 1 | -- |
| 1173+04 | | 1176+15 | IHB | LT | 275 | 39.5 | 1 | -- |
| 1180+24 | | 1187+06 | NIH | RT | 587.5 | 39.5 | 1 | -- |
| 1197+35 | | 1197+99 | IHA | RT | 25 | 39.5 | -- | 1 |
| STAGE 2 SUBTOTALS | | | | | | | | |
| | | | | | 4775 | 197.5 | 5 | 3 |
| PROJECT 1133-10-71 | | | | | | | | |
| | | | | | 6737.5 | 237 | 5 | 3 |

FENCING

616.0100.001 616.0206 616.0329.5.001

GATES
 FENCE CHAIN LINK
 WOVEN WIRE CHAIN LINK
 4-FT 6-FT 3.5-FT
 LF LF LF
 EACH EACH EACH

| STATION | - | STATION | LOCATION | OFFSET | LF | LF | LF | REMARKS |
|---------------------------|---|---------|----------|--------|----|-------|----|--|
| STAGE 1 | | | | | | | | |
| 1135+55 | - | 1151+30 | NMC-IHA | RT | -- | 1705 | -- | |
| 1153+90 | | 1153+95 | IHA | RT | -- | 140 | 1 | INSTALL INTO EXISTING, AT END OF LONE GROVE CT |
| 1159+79 | | 1160+57 | IHA | RT | -- | 140 | -- | |
| STAGE 1 SUBTOTALS | | | | | | | | |
| | | | | | 0 | 1,845 | 1 | |
| STAGE 2 | | | | | | | | |
| 1135+95 | | 1156+54 | SMC | LT | -- | 2170 | -- | |
| -- | | 1168+50 | VED | LT | 20 | -- | -- | CONNECTION BETWEEN EX. FENCE & CONC. BARRIER |
| STAGE 2 SUBTOTALS | | | | | | | | |
| | | | | | 20 | 2,170 | 0 | |
| PROJECT 1133-10-71 TOTALS | | | | | | | | |
| | | | | | 20 | 4,015 | 1 | |

FENCE SAFETY

| STAGE 1 | LOCATION | LF |
|------------------------------|----------|-----|
| BEHIND SIDEWALK, WB VELD AVE | | 100 |
| SUBTOTAL STAGE 1 | | 100 |
| STAGE 2 | | |
| BEHIND SIDEWALK, WB VELD AVE | | 200 |
| SUBTOTAL STAGE 2 | | 200 |
| ALL | | 200 |
| UNDISTRIBUTED | | 200 |
| PROJECT TOTAL | | 500 |

Addendum No. 2
 ID 1133-10-71
 Revised Sheet 485
 January 7, 2015

TOTAL ESTIMATED QUANTITIES

| BID ITEM NUMBER | BID ITEMS | UNIT | TOTAL |
|-----------------|--|------|----------|
| 502.3200 | PROTECTIVE SURFACE TREATMENT | SY | 1,385 |
| 504.0500 | CONCRETE MASONRY RETAINING WALLS | CY | 537 |
| 505.0615 | BAR STEEL REINFORCEMENT HS COATED RETAINING WALLS | LB | 63,380 |
| 516.0500 | RUBBERIZED MEMBRANE WATERPROOFING | SY | 50 |
| 612.0406 | PIPE UNDERDRAIN WRAPPED 6-INCH | LF | 1,115 |
| 652.0125 | CONDUIT RIGID METALLIC 2-INCH | LF | 1,105 |
| 652.0225 | CONDUIT RIGID NONMETALLIC SCHEDULE 40 2-INCH | LF | 15 |
| 653.0222 | JUNCTION BOXES 18x12x6-INCH | EACH | 5 |
| 657.6005-S | ANCHOR ASSEMBLIES LIGHT POLES ON STRUCTURES | EACH | 5 |
| SPV.0165-701 | STAINING CONCRETE | SF | 19,015 |
| SPV.0165-850 | WALL WIRE FACED MECHANICALLY STABILIZED EARTH LRFD/OMP PILOT | SF | 14,088 |
| SPV.0165-851 | PRESSRESSED PRECAST CONCRETE WALL PANEL | SF | 14,088 |
| 310.0110 | BASE AGGREGATE OPEN GRADED | TON | 1,550 |
| 645.0112 | GEOTEXTILE FABRIC TYPE OF SCHEDULE B | SY | 2,315 |
| | NON-BID ITEMS | SIZE | 7/8", 1" |
| | PREFORMED FILLER | SIZE | 1/2" |
| | CORK FILLER | SIZE | 1" |
| | EXPANDED POLYSTYRENE | SIZE | 1" |

GENERAL NOTES

DRAWINGS SHALL NOT BE SCALED.
 BAR STEEL REINFORCEMENT SHALL BE EMBEDDED 2" CLEAR UNLESS SHOWN OR NOTED OTHERWISE.
 THE CONTRACTOR SHALL PROVIDE COMPLETE DESIGN, PLANS, DETAILS, SPECIFICATIONS, AND SHOP DRAWINGS FOR THE RETAINING WALLS IN ACCORDANCE WITH THE SPECIAL PROVISIONS.
 THE RETAINING WALL MANUFACTURER SHALL PROVIDE TECHNICAL ASSISTANCE TO THE CONTRACTOR DURING CONSTRUCTION.
 THE COST OF FURNISHING THESE ITEMS SHALL BE INCLUDED IN THE BID ITEM "WALL WIRE FACED MECHANICALLY STABILIZED EARTH LRFD/OMP PILOT".
 PLANS, ELEVATIONS AND DETAILS SHOWN ON THESE DRAWINGS, AND DETAILS COMMON TO THE WALL SYSTEM SELECTED, THE CONTRACTOR SHALL VERIFY THAT THE WALL SYSTEM SELECTED WILL CONFORM TO THE REQUIRED ALIGNMENTS AND DETAILS.
 THE RETAINING WALL IS TO BE DESIGNED USING THE ELEVATIONS GIVEN ON THESE PLANS.
 APPLY PROTECTIVE SURFACE TREATMENT TO THE EXPOSED SURFACE OF THE ANCHOR SLAB AND THE TOP OF THE PARAPETS.
 THE COST OF FURNISHING AND PLACING THE FOOTING UNDER THE PRESSRESSED PRECAST PANELS IS INCLUDED IN THE BID ITEM "PRESSRESSED PRECAST CONCRETE WALL PANEL".
 THE QUANTITY OF CONCRETE MASONRY FOR THE CAST-IN-PLACE ANCHOR SLAB, PARAPETS, AND PARAPET BLASTER FOR LIGHT RETAINING WALLS IS INCLUDED IN THE BID ITEM "CONCRETE MASONRY RETAINING WALLS".
 ALL REFERENCE LINE STATIONS FOR R.O.S-BI ARE ALONG THE FRONT FACE OF WALL UNLESS SHOWN OTHERWISE.
 AT END OF WALL CLOSE SPACE BETWEEN THE WIRE FACE WALL AND PRECAST CONCRETE WALL PANEL WITH 1'-6" WIDE COLUMN OF CONCRETE.
 DESIGN RETAINING WALL FOR A LIVE LOAD SURCHARGE OF 240 PSF.
 DESIGN THE MSE WALL FOR A SUCTION LOAD OF 20 PSF ACTING ON THE PRECAST WALL PANELS.
 BEVEL EXPOSED EDGES OF CONCRETE 3/4" UNLESS NOTED OTHERWISE.
 THE FIRST DIGIT OF A THREE DIGIT BAR NO. AND THE FIRST TWO DIGITS OF A FOUR DIGIT BAR NO. SIGNIFIES THE BAR SIZE.
 JOINT FILLER SHALL CONFORM TO THE REQUIREMENTS OF AASHTO DESIGNATION M13, TYPE 1, II, OR III OR AASHTO DESIGNATION M213.
 THE MAXIMUM VALUE OF THE ANGLE OF INTERNAL FRICTION OF THE WALL BACKFILL MATERIAL IN THE REINFORCED ZONE SHALL BE ASSUMED TO BE 30 WITHOUT CERTIFIED TEST VALUES.
 OPTIONAL TRANSVERSE CONSTRUCTION JOINTS ARE PERMITTED IN THE FOOTING WITH A MINIMUM SPACING OF TWO PANEL JOINTS. FOOTING JOINTS SHALL BE OFFSET A MINIMUM OF 1'-0" FROM WALL JOINTS.
 RUN BAR STEEL THROUGH FOOTING JOINTS.
 DO NOT ALLOW CONCRETE OR FILL TO DROP OR ACCUMULATE IN WALL PANEL CAVITY.
 HOT DIP GALVANIZE ALL STRUCTURAL STEEL CARBON IN ACCORDANCE WITH ASTM A123 WHERE SHOWN.
 PROVIDE A RUBBED SURFACE TREATMENT IN ACCORDANCE WITH SECTION 502.3.7.3 TO ALL PERMANENTLY EXPOSED SURFACES OF CONCRETE MASONRY RETAINING WALLS.
 DESIGN RETAINING WALL TO PROVIDE A FINISHED GRADE SLOPE BEHIND WALL AS SHOWN IN THESE PLANS AND THE ROADWAY CROSS SECTIONS.
 DESIGN FOR RETAINING WALL TO PROVIDE FOR ROADWAY BEHIND WALL AS SHOWN.
 BOX CULVERT B-5-693 WILL BE BUILT PRIOR TO CONSTRUCTION OF WALL R-5-8L.
 SEE SPECIAL PROVISIONS AND SHEET 14 FOR AESTHETIC TREATMENTS TO THE WALL.

DEADMAN ANCHOR SYSTEM WHICH INCLUDES ANCHOR, BLACK, ANCHOR ROD AND PANEL CONNECTION COMPONENTS IS INCLUDED IN THE BID ITEM "PRESSRESSED PRECAST CONCRETE WALL PANEL".

GEOMETRY TABLE

| WALL STATION | ROAD STATION | OFF-SET TO FOF WALL (FT) | TOP OF WALL "A" | FINISHED GRADE EL "B" |
|--------------|--------------|--------------------------|-----------------|-----------------------|
| 0+00.00 | 1159+00.00 | IHA | 40.00 | 594.53 |
| 0+49.80 | 1159+50.00 | IHA | 43.83 | 594.55 |
| 0+85.54 | 1159+85.90 | IHA | 46.71 | 594.65 |
| 0+99.57 | 1160+00.00 | IHA | 47.84 | 594.70 |
| 1+38.05 | 1160+40.55 | VEA | 23.75 | 594.92 |
| 1+47.46 | 1160+50.00 | VEA | 23.75 | 594.99 |
| 1+49.76 | 1161+00.00 | VEA | 23.75 | 595.42 |
| 2+47.06 | 1161+50.00 | VEA | 23.75 | 596.01 |
| 2+96.86 | 1162+00.00 | VEA | 23.75 | 596.75 |
| 3+46.66 | 1162+50.00 | VEA | 23.75 | 597.51 |
| 3+96.46 | 1163+00.00 | VEA | 23.75 | 598.14 |
| 4+46.25 | 1163+50.00 | VEA | 23.75 | 598.64 |
| 4+96.02 | 1164+00.00 | VEA | 23.75 | 599.02 |
| 5+45.78 | 1164+50.00 | VEA | 23.75 | 599.27 |
| 5+95.54 | 1165+00.00 | VEA | 23.75 | 599.40 |
| 6+45.30 | 1165+50.00 | VEA | 23.75 | 599.40 |
| 6+94.37 | 1166+00.00 | VEA | 23.88 | 599.27 |
| 7+43.18 | 1166+50.00 | VEA | 24.52 | 598.99 |
| 7+91.96 | 1167+00.00 | VEA | 25.68 | 598.58 |
| 8+40.69 | 1167+50.00 | VEA | 27.38 | 598.02 |
| 8+89.34 | 1168+00.00 | VEA | 29.59 | 597.33 |
| 9+39.23 | 1168+50.00 | VEA | 32.72 | 597.02 |
| 9+88.29 | 1169+00.00 | VEA | 35.07 | 596.81 |
| 10+38.78 | 1169+50.00 | VEA | 35.81 | 596.42 |
| 10+92.85 | 1170+00.00 | VEA | 37.64 | 595.48 |

DESIGN DATA

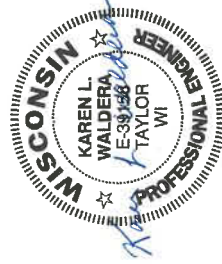
LIVE LOAD:
 LIVE LOAD SURCHARGE (ROADWAY): 240 PSF
 MATERIAL PROPERTIES:
 CONCRETE MASONRY RETAINING WALLS f'c = 4,000 P.S.I.
 PRECAST CONCRETE WALL PANEL f'c = 5,000 P.S.I.
 BAR STEEL REINFORCEMENT f'y = 60,000 P.S.I.
 STRUCTURAL CARBON STEEL f'y = 36,000 P.S.I.
 FOUNDATION DATA:
 FACTORED BEARING RESISTANCE-MSE WALL: SEE WALL EXTERNAL & OVERALL STABILITY EVALUATION TABLE ON SHEET 4
 NOTE: THE WALL HAS BEEN DESIGNED FOR TRAFFIC LOADING ONLY. IF DURING CONSTRUCTION HEAVY EQUIPMENT IS OPERATING IN CLOSE PROXIMITY TO THE WALL, THE SAFETY FACTOR FOR THIS WALL WILL SIGNIFICANTLY DECREASE.

TRAFFIC DATA

USH-41 NB
 A.D.T. (I2015) = 36,700
 A.D.T. (I2035) = 44,800
 DESIGN SPEED 70 MPH
 RAMP VEA
 A.D.T. (I2015) = 7,800
 A.C.T. (I2035) = 8,500
 DESIGN SPEED 60 MPH

Addendum No. 2
 ID 1133-10-71
 Revised Sheet 833
 January 7, 2015

William C. Decker 01/06/15



1-5-2015

| | | | |
|-----|------|--|-------|
| NO. | DATE | REVISION | BY |
| 1 | 1/15 | ADDED BASE AGGREGATE OPEN GRADED AND GEOTEXTILE FABRIC TYPE OF | AYRES |

STATE OF WISCONSIN
 DEPARTMENT OF TRANSPORTATION

STRUCTURE R-5-81 (STAGE 1)
 DRAWING NO. / CLS. / DATE
 KLV

QUANTITIES AND NOTES
 SHEET 2 OF 14
 833

ORIGINAL PLANS PREPARED BY
AYRES ASSOCIATES
 3433 Oakwood Hills Parkway
 Eau Claire, WI 54601
 www.ayresassociates.com

NB USH 41 "NMC" (continued)

| Station | Distance | AREA (SF) | | | | | | Incremental Vol (CY) (Unadjusted) | | | | | | Cumulative Vol (CY) | | | Mass Ordinate | |
|---------|----------|--------------------------|-------|---------------|-----------------------|-----|------------------|-----------------------------------|---------|--------|--------|--------|--------|---------------------|-------|--------|---------------|------|
| | | Cut | Fill | Marsh Ex. Cut | Marsh Ex. Blanket Cut | EBS | Drainage Blanket | Note 1 | Note 2 | Note 3 | Note 4 | Note 5 | Note 6 | Note 7 | Cut | Fill | | 1.00 |
| 1234+50 | 50 | 144.2 | 13.3 | 0 | 0 | 0 | 0 | 284 | 25 | 0 | 0 | 0 | 0 | 0 | 6813 | 101884 | -95071 | |
| 1235+00 | 50 | 130.7 | 13.3 | 0 | 0 | 0 | 0 | 255 | 25 | 0 | 0 | 0 | 0 | 0 | 7067 | 101909 | -94841 | |
| 1235+50 | 50 | 138.9 | 59.8 | 0 | 0 | 0 | 0 | 250 | 68 | 0 | 0 | 0 | 0 | 0 | 7317 | 101976 | -94659 | |
| 1236+00 | 50 | 123.0 | 58.4 | 0 | 0 | 0 | 0 | 242 | 109 | 0 | 0 | 0 | 0 | 0 | 7559 | 102086 | -94526 | |
| 1236+50 | 50 | 100.6 | 64.8 | 0 | 0 | 0 | 0 | 207 | 114 | 0 | 0 | 0 | 0 | 0 | 7766 | 102200 | -94433 | |
| 1237+00 | 50 | 83.1 | 79.1 | 0 | 0 | 0 | 0 | 170 | 133 | 0 | 0 | 0 | 0 | 0 | 7936 | 102333 | -94397 | |
| 1237+50 | 50 | 69.8 | 92.5 | 0 | 0 | 0 | 0 | 142 | 159 | 0 | 0 | 0 | 0 | 0 | 8078 | 102492 | -94414 | |
| 1238+00 | 50 | 59.9 | 97.9 | 0 | 0 | 0 | 0 | 120 | 176 | 0 | 0 | 0 | 0 | 0 | 8198 | 102668 | -94470 | |
| 1238+50 | 50 | 47.0 | 95.5 | 0 | 0 | 0 | 0 | 99 | 179 | 0 | 0 | 0 | 0 | 0 | 8297 | 102847 | -94550 | |
| 1239+00 | 50 | 33.6 | 101.7 | 0 | 0 | 0 | 0 | 75 | 183 | 0 | 0 | 0 | 0 | 0 | 8371 | 103030 | -94658 | |
| 1239+50 | 50 | 29.7 | 104.3 | 0 | 0 | 0 | 0 | 59 | 191 | 0 | 0 | 0 | 0 | 0 | 8430 | 103220 | -94790 | |
| 1240+00 | 50 | 28.8 | 107.3 | 0 | 0 | 0 | 0 | 54 | 196 | 0 | 0 | 0 | 0 | 0 | 8484 | 103416 | -94932 | |
| 1240+50 | 50 | 30.9 | 106 | 0 | 0 | 0 | 0 | 55 | 198 | 0 | 0 | 0 | 0 | 0 | 8540 | 103614 | -95074 | |
| 1241+00 | 50 | 34.1 | 106.4 | 0 | 0 | 0 | 0 | 60 | 197 | 0 | 0 | 0 | 0 | 0 | 8600 | 103811 | -95211 | |
| 1241+50 | 50 | 47.9 | 106.3 | 0 | 0 | 0 | 0 | 76 | 197 | 0 | 0 | 0 | 0 | 0 | 8676 | 104008 | -95332 | |
| 1242+00 | 50 | 62.4 | 85.7 | 0 | 0 | 0 | 0 | 102 | 178 | 0 | 0 | 0 | 0 | 0 | 8778 | 104185 | -95407 | |
| 1242+50 | 50 | 84.9 | 69.6 | 0 | 0 | 0 | 0 | 136 | 144 | 0 | 0 | 0 | 0 | 0 | 8914 | 104329 | -95415 | |
| 1243+00 | 50 | 102.3 | 61.4 | 0 | 0 | 0 | 0 | 173 | 121 | 0 | 0 | 0 | 0 | 0 | 9088 | 104450 | -95363 | |
| 1243+50 | 50 | 117.2 | 54.7 | 0 | 0 | 0 | 0 | 203 | 108 | 0 | 0 | 0 | 0 | 0 | 9291 | 104558 | -95267 | |
| 1244+00 | 50 | 137.2 | 51.2 | 0 | 0 | 0 | 0 | 235 | 98 | 0 | 0 | 0 | 0 | 0 | 9526 | 104656 | -95130 | |
| 1244+50 | 50 | 158.1 | 42.1 | 0 | 0 | 0 | 0 | 273 | 86 | 0 | 0 | 0 | 0 | 0 | 9800 | 104742 | -94943 | |
| 1245+00 | 50 | 174.9 | 38.2 | 0 | 0 | 0 | 0 | 308 | 74 | 0 | 0 | 0 | 0 | 0 | 10108 | 104817 | -94709 | |
| 1245+50 | 50 | 178.5 | 32.8 | 0 | 0 | 0 | 0 | 327 | 66 | 0 | 0 | 0 | 0 | 0 | 10435 | 104883 | -94447 | |
| 1246+00 | 50 | 176.6 | 29.8 | 0 | 0 | 0 | 0 | 329 | 58 | 0 | 0 | 0 | 0 | 0 | 10764 | 104940 | -94176 | |
| 1246+50 | 50 | 181.2 | 29.0 | 0 | 0 | 0 | 0 | 331 | 54 | 0 | 0 | 0 | 0 | 0 | 11095 | 104995 | -93900 | |
| 1247+00 | 50 | 175.9 | 29.9 | 0 | 0 | 0 | 0 | 331 | 55 | 0 | 0 | 0 | 0 | 0 | 11426 | 105049 | -93623 | |
| 1247+50 | 50 | 171.5 | 28.2 | 0 | 0 | 0 | 0 | 322 | 54 | 0 | 0 | 0 | 0 | 0 | 11748 | 105103 | -93356 | |
| 1248+00 | 50 | 168.5 | 29.7 | 0 | 0 | 0 | 0 | 315 | 54 | 0 | 0 | 0 | 0 | 0 | 12063 | 105157 | -93094 | |
| 1248+50 | 50 | 164.0 | 32.0 | 0 | 0 | 0 | 0 | 308 | 57 | 0 | 0 | 0 | 0 | 0 | 12371 | 105214 | -92844 | |
| 1249+00 | 50 | 149.3 | 35.2 | 0 | 0 | 0 | 0 | 290 | 62 | 0 | 0 | 0 | 0 | 0 | 12661 | 105276 | -92616 | |
| * | | | | | | | | 1500 | 0 | 0 | 0 | 0 | 0 | 0 | 14161 | 105276 | -91116 | |
| | | COLUMN SUB-TOTALS | | | | | | 7,632 | 3,417 | 0 | 0 | 0 | 0 | 0 | 0 | | | |
| | | COLUMN TOTALS | | | | | | 14,161 | 105,276 | 0 | 0 | 0 | 0 | 0 | 0 | | | |

*Temporary Crossover Removal; STA 1236+00 NMC - 1247+00 NMC, LT
 measured from existing ground to top of proposed cut. Cut includes pavement material.
 measured from existing ground to top of proposed fill.
 All marsh excavation planned to be wasted offsite. Marsh excavation to be backfilled with Roadway Embankment, unless specified in plans.
 Portion of material excavated as Marsh Excavation, but not to be backfilled (see construction detail).
 Additional excavation necessary to install drainage blanket. Measured from bottom of drainage blanket to existing ground.
 All EBS material assumed to be wasted offsite. All EBS to be backfilled with Roadway Embankment, unless specified by Engineer (see construction detail).
 End area occupied by drainage blanket
 Mass Ordinate = (Cut + Blanket Cut) - [(Marsh Excavation - Marsh Excavation Cut.) + Fill + Blanket Cut - Drainage Blanket]

Addendum No. 2
 ID 1133-10-71
 Revised Sheet 940
 January 7, 2015

SCHEDULE OF ITEMS

REVISED:

CONTRACT:
20150113011

PROJECT(S):
1133-10-71

FEDERAL ID(S):
WISC 2015008

CONTRACTOR : _____

| LINE NO | ITEM DESCRIPTION | APPROX. QUANTITY AND UNITS | UNIT PRICE | | BID AMOUNT | |
|------------|---------------------|----------------------------------|------------|-----|------------|-----|
| | | | DOLLARS | CTS | DOLLARS | CTS |

SECTION 0001 Contract Items

| | | | | | | |
|------|--|-----------------|------|---|---|---|
| 0010 | 201.0110 Clearing | 1,929.000 SY | . | . | . | . |
| 0020 | 201.0120 Clearing | 432.000 ID | . | . | . | . |
| 0030 | 201.0210 Grubbing | 1,919.000 SY | . | . | . | . |
| 0040 | 201.0220 Grubbing | 432.000 ID | . | . | . | . |
| 0050 | 203.0100 Removing Small Pipe Culverts | 7.000 EACH | . | . | . | . |
| 0060 | 203.0200 Removing Old Structure (station) 001. 1192+00 Nmc | LUMP | LUMP | . | . | . |
| 0070 | 203.0200 Removing Old Structure (station) 002. 1173+73.21 Nb | LUMP | LUMP | . | . | . |
| 0080 | 203.0200 Removing Old Structure (station) 002. 1192+50 Smc | LUMP | LUMP | . | . | . |
| 0090 | 203.0200 Removing Old Structure (station) 003. 1189+25 Sih | LUMP | LUMP | . | . | . |
| 0100 | 203.0200 Removing Old Structure (station) 004. 1161+15 Nih | LUMP | LUMP | . | . | . |

SCHEDULE OF ITEMS

REVISED:

CONTRACT:
20150113011PROJECT(S):
1133-10-71FEDERAL ID(S):
WISC 2015008

CONTRACTOR : _____

| LINE NO | ITEM DESCRIPTION | APPROX. QUANTITY AND UNITS | UNIT PRICE | | BID AMOUNT | |
|------------|--|----------------------------------|------------|-----|------------|-----|
| | | | DOLLARS | CTS | DOLLARS | CTS |
| 0110 | 203.0200 Removing Old Structure (station) 005. 1210+60 Smc | LUMP | LUMP | | | . |
| 0120 | 203.0200 Removing Old Structure (station) 006. 1197+00 Iha Lt | LUMP | LUMP | | | . |
| 0130 | 203.0200 Removing Old Structure (station) 007. 325+35 | LUMP | LUMP | | | . |
| 0140 | 203.0200 Removing Old Structure (station) 008. 1185+25 Nmc, 43' Lt | LUMP | LUMP | | | . |
| 0150 | 203.0225.S Debris Containment (structure) 700. B-5-64 | LUMP | LUMP | | | . |
| 0160 | 203.0225.S Debris Containment (structure) 702. B-05-674 | LUMP | LUMP | | | . |
| 0170 | 203.0225.S Debris Containment (structure) 703. B-05-669 | LUMP | LUMP | | | . |
| 0180 | 203.0225.S Debris Containment (structure) 704. B-05-675 | LUMP | LUMP | | | . |
| 0190 | 204.0100 Removing Pavement **p** | 35,040.000 SY | | . | | . |
| 0200 | 204.0110 Removing Asphaltic Surface **p** | 120.000 SY | | . | | . |
| 0210 | 204.0115 Removing Asphaltic Surface Butt Joints **p** | 88.000 SY | | . | | . |

SCHEDULE OF ITEMS

REVISED:

CONTRACT:
20150113011PROJECT(S):
1133-10-71FEDERAL ID(S):
WISC 2015008

CONTRACTOR : _____

| LINE NO | ITEM DESCRIPTION | APPROX. QUANTITY AND UNITS | UNIT PRICE | | BID AMOUNT | |
|------------|---|----------------------------------|------------|-----|------------|-----|
| | | | DOLLARS | CTS | DOLLARS | CTS |
| 0220 | 204.0120 Removing Asphaltic Surface Milling **p** | 4,903.000 SY | . | . | . | . |
| 0230 | 204.0165 Removing Guardrail **p** | 5,305.000 LF | . | . | . | . |
| 0240 | 204.0170 Removing Fence **p** | 19,031.000 LF | . | . | . | . |
| 0250 | 204.0175 Removing Concrete Slope Paving | 264.000 SY | . | . | . | . |
| 0260 | 204.0180 Removing Delineators and Markers | 80.000 EACH | . | . | . | . |
| 0270 | 204.0190 Removing Surface Drains | 6.000 EACH | . | . | . | . |
| 0280 | 204.0210 Removing Manholes | 1.000 EACH | . | . | . | . |
| 0290 | 204.0220 Removing Inlets | 17.000 EACH | . | . | . | . |
| 0300 | 204.0245 Removing Storm Sewer (size) 002. 12-Inch **p** | 144.000 LF | . | . | . | . |
| 0310 | 204.0245 Removing Storm Sewer (size) 003. 18-Inch **p** | 1,356.000 LF | . | . | . | . |
| 0320 | 204.0245 Removing Storm Sewer (size) 004. 24-Inch **p** | 376.000 LF | . | . | . | . |

SCHEDULE OF ITEMS

REVISED:

CONTRACT:
20150113011PROJECT(S):
1133-10-71FEDERAL ID(S):
WISC 2015008

CONTRACTOR : _____

| LINE NO | ITEM DESCRIPTION | APPROX. QUANTITY AND UNITS | UNIT PRICE | | BID AMOUNT | |
|------------|--|----------------------------------|------------|-----|------------|-----|
| | | | DOLLARS | CTS | DOLLARS | CTS |
| 0330 | 204.0245 Removing Storm Sewer (size) 005. 36-Inch **p** | 110.000 LF | . | | . | |
| 0350 | 204.9090.S Removing (Item Description) 002. Concrete Barrier Temporary Precast Left In Place | 9,000.000 LF | . | | . | |
| 0360 | 205.0100 Excavation Common | 131,847.000 CY | . | | . | |
| 0370 | 205.0400 Excavation Marsh | 38,213.000 CY | . | | . | |
| 0380 | 206.1000 Excavation for Structures Bridges (structure) 002. B-05-669 | LUMP | LUMP | | . | |
| 0390 | 206.1000 Excavation for Structures Bridges (structure) 005. B-05-674 | LUMP | LUMP | | . | |
| 0400 | 206.1000 Excavation for Structures Bridges (structure) 006. B-05-675 | LUMP | LUMP | | . | |
| 0410 | 206.1000 Excavation for Structures Bridges (structure) 700. B-5-64 | LUMP | LUMP | | . | |
| 0420 | 208.1100 Select Borrow | 7,300.000 CY | . | | . | |

SCHEDULE OF ITEMS

REVISED:

CONTRACT:
20150113011PROJECT(S):
1133-10-71FEDERAL ID(S):
WISC 2015008

CONTRACTOR : _____

| LINE NO | ITEM DESCRIPTION | APPROX. QUANTITY AND UNITS | UNIT PRICE | | BID AMOUNT | |
|------------|---|----------------------------------|------------|-----|------------|-----|
| | | | DOLLARS | CTS | DOLLARS | CTS |
| 0430 | 209.0300.S Backfill Coarse Aggregate (size) 001. No 1 | 160.000 CY | . | . | . | . |
| 0440 | 210.0100 Backfill Structure **p** | 1,670.000 CY | . | . | . | . |
| 0450 | 213.0100 Finishing Roadway (project) 001. 1133-10-71 | 1.000 EACH | . | . | . | . |
| 0460 | 305.0110 Base Aggregate Dense 3/4-Inch | 20,930.000 TON | . | . | . | . |
| 0470 | 305.0120 Base Aggregate Dense 1 1/4-Inch | 87,890.000 TON | . | . | . | . |
| 0480 | 311.0110 Breaker Run | 166,198.000 TON | . | . | . | . |
| 0490 | 315.0100 Asphaltic Base | 20,926.000 TON | . | . | . | . |
| 0500 | 320.0145 Concrete Base 8-Inch **p** | 2,478.000 SY | . | . | . | . |
| 0510 | 320.0150 Concrete Base 8 1/2-Inch **p** | 1,315.000 SY | . | . | . | . |
| 0520 | 415.0090 Concrete Pavement 9-Inch **p** | 6,412.000 SY | . | . | . | . |
| 0530 | 415.0105 Concrete Pavement 10 1/2-Inch **p** | 109,525.000 SY | . | . | . | . |

SCHEDULE OF ITEMS

REVISED:

CONTRACT:
20150113011PROJECT(S):
1133-10-71FEDERAL ID(S):
WISC 2015008

CONTRACTOR : _____

| LINE NO | ITEM DESCRIPTION | APPROX. QUANTITY AND UNITS | UNIT PRICE | | BID AMOUNT | |
|------------|--|----------------------------------|------------|-----|------------|-----|
| | | | DOLLARS | CTS | DOLLARS | CTS |
| 0540 | 415.0410 Concrete Pavement Approach Slab **p** | 1,856.000 SY | . | | . | |
| 0550 | 416.0610 Drilled Tie Bars | 566.000 EACH | . | | . | |
| 0560 | 416.0620 Drilled Dowel Bars | 144.000 EACH | . | | . | |
| 0570 | 416.1010 Concrete Surface Drains | 11.800 CY | . | | . | |
| 0580 | 416.1110 Concrete Shoulder Rumble Strips | 16,722.000 LF | . | | . | |
| 0590 | 440.4410.S Incentive IRI Ride | 26,000.000 DOL | 1.00000 | | 26000.00 | |
| 0600 | 455.0105 Asphaltic Material PG58-28 | 347.000 TON | . | | . | |
| 0610 | 455.0605 Tack Coat | 1,557.000 GAL | . | | . | |
| 0620 | 460.1100 Hma Pavement Type E-0.3 | 5,270.000 TON | . | | . | |
| 0640 | 460.1130 Hma Pavement Type E-30 | 1,034.000 TON | . | | . | |
| 0650 | 460.2000 Incentive Density HMA Pavement | 4,040.000 DOL | 1.00000 | | 4040.00 | |

SCHEDULE OF ITEMS

REVISED:

CONTRACT:
20150113011PROJECT(S):
1133-10-71FEDERAL ID(S):
WISC 2015008

CONTRACTOR : _____

| LINE NO | ITEM DESCRIPTION | APPROX. QUANTITY AND UNITS | UNIT PRICE | | BID AMOUNT | |
|------------|--|----------------------------------|------------|-----|------------|-----|
| | | | DOLLARS | CTS | DOLLARS | CTS |
| 0660 | 465.0125 Asphaltic Surface Temporary | 14,272.000 TON | . | | . | |
| 0670 | 465.0400 Asphaltic Shoulder Rumble Strips **p** | 10,909.000 LF | . | | . | |
| 0680 | 502.0100 Concrete Masonry Bridges **p** | 158.000 CY | . | | . | |
| 0690 | 502.2000 Compression Joint Sealer Preformed Elastomeric (width) 700. 3-Inch **p** | 34.000 LF | . | | . | |
| 0700 | 502.3100 Expansion Device (structure) 700. B-5-64 **p** | LUMP | LUMP | | . | |
| 0710 | 502.3200 Protective Surface Treatment **p** | 25,837.000 SY | . | | . | |
| 0720 | 502.5002 Masonry Anchors Type L No. 4 Bars **p** | 4.000 EACH | . | | . | |
| 0730 | 502.5005 Masonry Anchors Type L No. 5 Bars | 3.000 EACH | . | | . | |
| 0740 | 502.5010 Masonry Anchors Type L No. 6 Bars **p** | 40.000 EACH | . | | . | |
| 0750 | 502.6110 Masonry Anchors Type S 3/4-Inch **p** | 10.000 EACH | . | | . | |

SCHEDULE OF ITEMS

REVISED:

CONTRACT:
20150113011PROJECT(S):
1133-10-71FEDERAL ID(S):
WISC 2015008

CONTRACTOR : _____

| LINE NO | ITEM DESCRIPTION | APPROX. QUANTITY AND UNITS | UNIT PRICE | | BID AMOUNT | |
|------------|--|----------------------------------|------------|-----|------------|-----|
| | | | DOLLARS | CTS | DOLLARS | CTS |
| 0760 | 503.0128 Prestressed Girder Type I 28-Inch **p** | 2,044.000 LF | . | . | . | . |
| 0770 | 503.0137 Prestressed Girder Type I 36W-Inch **p** | 302.000 LF | . | . | . | . |
| 0780 | 503.0172 Prestressed Girder Type I 72W-Inch **p** | 1,824.000 LF | . | . | . | . |
| 0790 | 504.0500 Concrete Masonry Retaining Walls **p** | 695.000 CY | . | . | . | . |
| 0800 | 505.0405 Bar Steel Reinforcement HS Bridges | 54,260.000 LB | . | . | . | . |
| 0810 | 505.0605 Bar Steel Reinforcement HS Coated Bridges | 344,940.000 LB | . | . | . | . |
| 0820 | 505.0615 Bar Steel Reinforcement HS Coated Retaining Walls | 81,240.000 LB | . | . | . | . |
| 0830 | 506.2605 Bearing Pads Elastomeric Non-Laminated **p** | 114.000 EACH | . | . | . | . |
| 0840 | 506.2610 Bearing Pads Elastomeric Laminated **p** | 2.000 EACH | . | . | . | . |
| 0850 | 506.4000 Steel Diaphragms (structure) 002. B-05-669 **p** | 22.000 EACH | . | . | . | . |
| 0860 | 506.4000 Steel Diaphragms (structure) 005. B-05-674 **p** | 24.000 EACH | . | . | . | . |

SCHEDULE OF ITEMS

REVISED:

CONTRACT:
20150113011PROJECT(S):
1133-10-71FEDERAL ID(S):
WISC 2015008

CONTRACTOR : _____

| LINE NO | ITEM DESCRIPTION | APPROX. QUANTITY AND UNITS | UNIT PRICE | | BID AMOUNT | |
|------------|---|----------------------------------|------------|-----|------------|-----|
| | | | DOLLARS | CTS | DOLLARS | CTS |
| 0870 | 506.4000 Steel Diaphragms (structure) 006. B-05-675 **p** | 12.000 EACH | . | . | . | . |
| 0880 | 506.4000 Steel Diaphragms (structure) 700. B-5-64 **p** | 4.000 EACH | . | . | . | . |
| 0900 | 511.1200 Temporary Shoring (structure) 005. B-05-674 | 1,420.000 SF | . | . | . | . |
| 0910 | 511.1200 Temporary Shoring (structure) 700. B-5-64 | 480.000 SF | . | . | . | . |
| 0920 | 511.1300 Temporary Shoring (location) 001. Sta 1150+50 - Sta 1153+75 Iha | 1,950.000 SF | . | . | . | . |
| 0930 | 511.1300 Temporary Shoring (location) 002. Sta 1161+00 - Sta 1167+00 Ve | 4,515.000 SF | . | . | . | . |
| 0940 | 511.2200 Temporary Shoring Left in Place (structure) 005. B-05-674 | 855.000 SF | . | . | . | . |
| 0950 | 511.2200 Temporary Shoring Left in Place (structure) 700. B-5-64 | 342.000 SF | . | . | . | . |
| 0960 | 511.2300 Temp Shoring Left in Place (location) 001. Sta 1169+76 - Sta 1170+21 Ve | 560.000 SF | . | . | . | . |

SCHEDULE OF ITEMS

REVISED:

CONTRACT:
20150113011PROJECT(S):
1133-10-71FEDERAL ID(S):
WISC 2015008

CONTRACTOR : _____

| LINE NO | ITEM DESCRIPTION | APPROX. QUANTITY AND UNITS | UNIT PRICE | | BID AMOUNT | |
|------------|--|----------------------------------|------------|-----|------------|-----|
| | | | DOLLARS | CTS | DOLLARS | CTS |
| 0970 | 511.2300 Temp Shoring Left in Place (location) 002. Sta 1142+00 - Sta 1145+75 Smc | 1,885.000 SF | . | | . | |
| 0980 | 511.2300 Temp Shoring Left in Place (location) 003. Sta 1146+50 - Sta 1171+35 Nmc | 19,600.000 SF | . | | . | |
| 0990 | 511.2300 Temp Shoring Left in Place (location) 004. Sta 1154+25 - Sta 1162+41 Smc | 4,950.000 SF | . | | . | |
| 1000 | 511.2300 Temp Shoring Left in Place (location) 005. Sta 1234+92 - Sta 1235+49 Nmc | 259.000 SF | . | | . | |
| 1010 | 516.0500 Rubberized Membrane Waterproofing **p** | 175.000 SY | . | | . | |
| 1020 | 520.8000 Concrete Collars for Pipe | 1.000 EACH | . | | . | |
| 1030 | 521.0118 Culvert Pipe Corrugated Steel 18-Inch | 464.000 LF | . | | . | |
| 1040 | 521.0124 Culvert Pipe Corrugated Steel 24-Inch | 15.000 LF | . | | . | |
| 1050 | 521.2005.S Surface Drain Pipe Corrugated Metal Slotted (inch) 001. 18-Inch | 990.000 LF | . | | . | |

SCHEDULE OF ITEMS

REVISED:

CONTRACT:
20150113011PROJECT(S):
1133-10-71FEDERAL ID(S):
WISC 2015008

CONTRACTOR : _____

| LINE NO | ITEM DESCRIPTION | APPROX. QUANTITY AND UNITS | UNIT PRICE | | BID AMOUNT | |
|------------|---|----------------------------------|------------|-----|------------|-----|
| | | | DOLLARS | CTS | DOLLARS | CTS |
| 1060 | 521.2005.S Surface Drain Pipe Corrugated Metal Slotted (inch) 002. 24-Inch | 460.000 LF | . | | . | |
| 1070 | 522.0136 Culvert Pipe Reinforced Concrete Class III 36-Inch | 100.000 LF | . | | . | |
| 1080 | 522.1015 Apron Endwalls for Culvert Pipe Reinforced Concrete 15-Inch | 1.000 EACH | . | | . | |
| 1090 | 522.1018 Apron Endwalls for Culvert Pipe Reinforced Concrete 18-Inch | 34.000 EACH | . | | . | |
| 1100 | 522.1024 Apron Endwalls for Culvert Pipe Reinforced Concrete 24-Inch | 3.000 EACH | . | | . | |
| 1110 | 522.1030 Apron Endwalls for Culvert Pipe Reinforced Concrete 30-Inch | 1.000 EACH | . | | . | |
| 1120 | 522.1036 Apron Endwalls for Culvert Pipe Reinforced Concrete 36-Inch | 2.000 EACH | . | | . | |
| 1130 | 550.0500 Pile Points | 193.000 EACH | . | | . | |
| 1140 | 550.1100 Piling Steel HP 10-Inch X 42 Lb | 108.000 LF | . | | . | |

SCHEDULE OF ITEMS

REVISED:

CONTRACT:
20150113011PROJECT(S):
1133-10-71FEDERAL ID(S):
WISC 2015008

CONTRACTOR : _____

| LINE NO | ITEM DESCRIPTION | APPROX. QUANTITY AND UNITS | UNIT PRICE | | BID AMOUNT | |
|------------|--|----------------------------------|------------|-----|------------|-----|
| | | | DOLLARS | CTS | DOLLARS | CTS |
| 1150 | 550.1120 Piling Steel HP 12-Inch X 53 Lb | 17,495.000 LF | . | . | . | . |
| 1160 | 602.0410 Concrete Sidewalk 5-Inch **p** | 13,430.000 SF | . | . | . | . |
| 1170 | 603.1142 Concrete Barrier Type S42 **p** | 10,798.000 LF | . | . | . | . |
| 1180 | 603.1156 Concrete Barrier Type S56 **p** | 2,843.000 LF | . | . | . | . |
| 1190 | 603.1442 Concrete Barrier Type S42C **p** | 553.000 LF | . | . | . | . |
| 1200 | 603.1456 Concrete Barrier Type S56C **p** | 201.000 LF | . | . | . | . |
| 1210 | 603.3279 Concrete Barrier Transition Type F51SF to S56 | 2.000 EACH | . | . | . | . |
| 1220 | 603.3513 Concrete Barrier Transition Type S32 to S36 | 3.000 EACH | . | . | . | . |
| 1230 | 603.3535 Concrete Barrier Transition Type S36 to S42 | 3.000 EACH | . | . | . | . |
| 1240 | 603.8000 Concrete Barrier Temporary Precast Delivered | 57,525.000 LF | . | . | . | . |
| 1250 | 603.8125 Concrete Barrier Temporary Precast Installed | 87,563.000 LF | . | . | . | . |

SCHEDULE OF ITEMS

REVISED:

CONTRACT:
20150113011PROJECT(S):
1133-10-71FEDERAL ID(S):
WISC 2015008

CONTRACTOR : _____

| LINE NO | ITEM DESCRIPTION | APPROX. QUANTITY AND UNITS | UNIT PRICE | | BID AMOUNT | |
|------------|---|----------------------------------|------------|-----|------------|-----|
| | | | DOLLARS | CTS | DOLLARS | CTS |
| 1260 | 604.0400 Slope Paving Concrete **p** | 44.000 SY | . | . | . | . |
| 1270 | 604.0500 Slope Paving Crushed Aggregate **p** | 200.000 SY | . | . | . | . |
| 1280 | 604.0600 Slope Paving Select Crushed Material **p** | 1,364.000 SY | . | . | . | . |
| 1290 | 606.0200 Riprap Medium | 414.000 CY | . | . | . | . |
| 1300 | 606.0300 Riprap Heavy | 2.000 CY | . | . | . | . |
| 1310 | 608.0312 Storm Sewer Pipe Reinforced Concrete Class III 12-Inch | 719.000 LF | . | . | . | . |
| 1320 | 608.0315 Storm Sewer Pipe Reinforced Concrete Class III 15-Inch | 1,497.000 LF | . | . | . | . |
| 1330 | 608.0318 Storm Sewer Pipe Reinforced Concrete Class III 18-Inch | 2,499.000 LF | . | . | . | . |
| 1340 | 608.0324 Storm Sewer Pipe Reinforced Concrete Class III 24-Inch | 3,921.000 LF | . | . | . | . |
| 1350 | 608.0330 Storm Sewer Pipe Reinforced Concrete Class III 30-Inch | 194.000 LF | . | . | . | . |
| 1360 | 608.0336 Storm Sewer Pipe Reinforced Concrete Class III 36-Inch | 1,442.000 LF | . | . | . | . |

SCHEDULE OF ITEMS

REVISED:

CONTRACT:
20150113011PROJECT(S):
1133-10-71FEDERAL ID(S):
WISC 2015008

CONTRACTOR : _____

| LINE NO | ITEM DESCRIPTION | APPROX. QUANTITY AND UNITS | UNIT PRICE | | BID AMOUNT | |
|------------|---|----------------------------------|------------|-----|------------|-----|
| | | | DOLLARS | CTS | DOLLARS | CTS |
| 1370 | 611.0430 Reconstructing Inlets | EACH 2.000 | . | | . | |
| 1380 | 611.0530 Manhole Covers Type J | EACH 6.000 | . | | . | |
| 1390 | 611.0535 Manhole Covers Type J-Special | EACH 4.000 | . | | . | |
| 1400 | 611.0612 Inlet Covers Type C | EACH 1.000 | . | | . | |
| 1410 | 611.0624 Inlet Covers Type H | EACH 3.000 | . | | . | |
| 1420 | 611.0627 Inlet Covers Type HM | EACH 8.000 | . | | . | |
| 1430 | 611.0654 Inlet Covers Type V | EACH 74.000 | . | | . | |
| 1440 | 611.2004 Manholes 4-Ft Diameter | EACH 7.000 | . | | . | |
| 1450 | 611.2005 Manholes 5-Ft Diameter | EACH 15.000 | . | | . | |
| 1460 | 611.2006 Manholes 6-Ft Diameter | EACH 5.000 | . | | . | |
| 1470 | 611.2007 Manholes 7-Ft Diameter | EACH 2.000 | . | | . | |

SCHEDULE OF ITEMS

REVISED:

CONTRACT:
20150113011PROJECT(S):
1133-10-71FEDERAL ID(S):
WISC 2015008

CONTRACTOR : _____

| LINE NO | ITEM DESCRIPTION | APPROX. QUANTITY AND UNITS | UNIT PRICE | | BID AMOUNT | |
|------------|---|----------------------------------|------------|-----|------------|-----|
| | | | DOLLARS | CTS | DOLLARS | CTS |
| 1480 | 611.2066 Manholes 6x6-Ft | 1.000 EACH | . | | . | |
| 1490 | 611.3003 Inlets 3-Ft Diameter | 3.000 EACH | . | | . | |
| 1500 | 611.3004 Inlets 4-Ft Diameter | 25.000 EACH | . | | . | |
| 1510 | 611.3220 Inlets 2x2-Ft | 1.000 EACH | . | | . | |
| 1520 | 611.3225 Inlets 2x2.5-Ft | 66.000 EACH | . | | . | |
| 1530 | 611.9800.S Pipe Grates | 3.000 EACH | . | | . | |
| 1540 | 612.0106 Pipe Underdrain 6-Inch | 2,130.000 LF | . | | . | |
| 1550 | 612.0206 Pipe Underdrain Unperforated 6-Inch | 140.000 LF | . | | . | |
| 1560 | 612.0406 Pipe Underdrain Wrapped 6-Inch | 2,825.000 LF | . | | . | |
| 1570 | 614.0150 Anchor Assemblies for Steel Plate Beam Guard | 1.000 EACH | . | | . | |
| 1580 | 614.0397 Guardrail Mow Strip Emulsified Asphalt | 3,100.000 SY | . | | . | |

SCHEDULE OF ITEMS

REVISED:

CONTRACT:
20150113011PROJECT(S):
1133-10-71FEDERAL ID(S):
WISC 2015008

CONTRACTOR : _____

| LINE NO | ITEM DESCRIPTION | APPROX. QUANTITY AND UNITS | UNIT PRICE | | BID AMOUNT | |
|------------|--|----------------------------------|------------|-----|------------|-----|
| | | | DOLLARS | CTS | DOLLARS | CTS |
| 1590 | 614.0805 Crash Cushions Permanent Low Maintenance | 2.000 EACH | . | | . | |
| 1600 | 614.0905 Crash Cushions Temporary | 4.000 EACH | . | | . | |
| 1610 | 614.2300 Mgs Guardrail 3 | 6,737.500 LF | . | | . | |
| 1620 | 614.2500 Mgs Thrie Beam Transition | 237.000 LF | . | | . | |
| 1630 | 614.2610 Mgs Guardrail Terminal EAT | 5.000 EACH | . | | . | |
| 1640 | 614.2620 Mgs Guardrail Terminal Type 2 | 3.000 EACH | . | | . | |
| 1650 | 616.0100 Fence Woven Wire (height) 001. 4-Ft | 20.000 LF | . | | . | |
| 1660 | 616.0206 Fence Chain Link 6-FT | 4,015.000 LF | . | | . | |
| 1670 | 616.0329 Gates Chain Link (width) 001. 3. 5-Ft | 1.000 EACH | . | | . | |
| 1680 | 616.0700.S Fence Safety | 500.000 LF | . | | . | |
| 1690 | 618.0100 Maintenance And Repair of Haul Roads (project) 001. 1133-10-71 | 1.000 EACH | . | | . | |

SCHEDULE OF ITEMS

REVISED:

CONTRACT:
20150113011PROJECT(S):
1133-10-71FEDERAL ID(S):
WISC 2015008

CONTRACTOR : _____

| LINE NO | ITEM DESCRIPTION | APPROX. QUANTITY AND UNITS | UNIT PRICE | | BID AMOUNT | |
|------------|--|----------------------------------|------------|-----|------------|-----|
| | | | DOLLARS | CTS | DOLLARS | CTS |
| 1700 | 619.1000 Mobilization | 1.000 EACH | . | | . | |
| 1710 | 621.0100 Landmark Reference Monuments | 12.000 EACH | . | | . | |
| 1720 | 623.0200 Dust Control Surface Treatment | 5,000.000 SY | . | | . | |
| 1730 | 624.0100 Water | 1,750.000 MGAL | . | | . | |
| 1740 | 625.0500 Salvaged Topsoil | 136,925.000 SY | . | | . | |
| 1750 | 627.0200 Mulching | 64,950.000 SY | . | | . | |
| 1760 | 628.1504 Silt Fence | 24,200.000 LF | . | | . | |
| 1770 | 628.1520 Silt Fence Maintenance | 24,200.000 LF | . | | . | |
| 1780 | 628.1905 Mobilizations Erosion Control | 15.000 EACH | . | | . | |
| 1790 | 628.1910 Mobilizations Emergency Erosion Control | 10.000 EACH | . | | . | |
| 1800 | 628.2004 Erosion Mat Class I Type B | 75,000.000 SY | . | | . | |

SCHEDULE OF ITEMS

REVISED:

CONTRACT:
20150113011PROJECT(S):
1133-10-71FEDERAL ID(S):
WISC 2015008

CONTRACTOR : _____

| LINE NO | ITEM DESCRIPTION | APPROX. QUANTITY AND UNITS | UNIT PRICE | | BID AMOUNT | |
|------------|--|----------------------------------|------------|-----|------------|-----|
| | | | DOLLARS | CTS | DOLLARS | CTS |
| 1810 | 628.2008 Erosion Mat Urban Class I Type B | 1,000.000 SY | . | | . | |
| 1820 | 628.6510 Soil Stabilizer Type B | 13.000 ACRE | . | | . | |
| 1830 | 628.7005 Inlet Protection Type A | 145.000 EACH | . | | . | |
| 1840 | 628.7010 Inlet Protection Type B | 95.000 EACH | . | | . | |
| 1850 | 628.7020 Inlet Protection Type D | 40.000 EACH | . | | . | |
| 1860 | 628.7504 Temporary Ditch Checks | 915.000 LF | . | | . | |
| 1870 | 628.7555 Culvert Pipe Checks | 105.000 EACH | . | | . | |
| 1880 | 628.7560 Tracking Pads | 12.000 EACH | . | | . | |
| 1890 | 628.7570 Rock Bags | 925.000 EACH | . | | . | |
| 1900 | 629.0210 Fertilizer Type B | 86.000 CWT | . | | . | |
| 1910 | 630.0120 Seeding Mixture No. 20 | 3,400.000 LB | . | | . | |

SCHEDULE OF ITEMS

REVISED:

CONTRACT:
20150113011PROJECT(S):
1133-10-71FEDERAL ID(S):
WISC 2015008

CONTRACTOR : _____

| LINE NO | ITEM DESCRIPTION | APPROX. QUANTITY AND UNITS | UNIT PRICE | | BID AMOUNT | |
|------------|--|----------------------------------|------------|-----|------------|-----|
| | | | DOLLARS | CTS | DOLLARS | CTS |
| 1920 | 630.0160 Seeding Mixture No. 60 | 75.000 LB | . | . | . | . |
| 1930 | 630.0200 Seeding Temporary | 3,400.000 LB | . | . | . | . |
| 1940 | 633.0100 Delineator Posts Steel | 64.000 EACH | . | . | . | . |
| 1950 | 633.0500 Delineator Reflectors | 208.000 EACH | . | . | . | . |
| 1960 | 633.1000 Delineator Brackets | 144.000 EACH | . | . | . | . |
| 1970 | 633.1100 Delineators Temporary | 255.000 EACH | . | . | . | . |
| 1980 | 633.5200 Markers Culvert End | 33.000 EACH | . | . | . | . |
| 1990 | 634.0614 Posts Wood 4x6-Inch X 14-FT | 8.000 EACH | . | . | . | . |
| 2000 | 634.0616 Posts Wood 4x6-Inch X 16-FT | 12.000 EACH | . | . | . | . |
| 2010 | 634.0618 Posts Wood 4x6-Inch X 18-FT | 6.000 EACH | . | . | . | . |
| 2020 | 634.0810 Posts Tubular Steel 2x2-Inch X 10-FT | 1.000 EACH | . | . | . | . |

SCHEDULE OF ITEMS

REVISED:

CONTRACT:
20150113011PROJECT(S):
1133-10-71FEDERAL ID(S):
WISC 2015008

CONTRACTOR : _____

| LINE NO | ITEM DESCRIPTION | APPROX. QUANTITY AND UNITS | UNIT PRICE | | BID AMOUNT | |
|------------|--|----------------------------------|------------|-----|------------|-----|
| | | | DOLLARS | CTS | DOLLARS | CTS |
| 2030 | 635.0200 Sign Supports Structural Steel HS | 3,649.000 LB | . | . | . | . |
| 2040 | 636.0100 Sign Supports Concrete Masonry ***P** | 221.800 CY | . | . | . | . |
| 2050 | 636.0500 Sign Supports Steel Reinforcement | 352.000 LB | . | . | . | . |
| 2060 | 636.1000 Sign Supports Steel Reinforcement HS | 7,490.000 LB | . | . | . | . |
| 2070 | 636.1500 Sign Supports Steel Coated Reinforcement HS | 30,920.000 LB | . | . | . | . |
| 2080 | 637.1220 Signs Type I Reflective SH | 1,090.000 SF | . | . | . | . |
| 2090 | 637.2210 Signs Type II Reflective H | 258.750 SF | . | . | . | . |
| 2100 | 637.2230 Signs Type II Reflective F | 64.000 SF | . | . | . | . |
| 2110 | 638.2102 Moving Signs Type II | 2.000 EACH | . | . | . | . |
| 2120 | 638.2601 Removing Signs Type I | 32.000 EACH | . | . | . | . |
| 2130 | 638.2602 Removing Signs Type II | 129.000 EACH | . | . | . | . |

SCHEDULE OF ITEMS

REVISED:

CONTRACT:
20150113011PROJECT(S):
1133-10-71FEDERAL ID(S):
WISC 2015008

CONTRACTOR : _____

| LINE NO | ITEM DESCRIPTION | APPROX. QUANTITY AND UNITS | UNIT PRICE | | BID AMOUNT | |
|------------|--|----------------------------------|------------|-----|------------|-----|
| | | | DOLLARS | CTS | DOLLARS | CTS |
| 2140 | 638.3000 Removing Small Sign Supports | 152.000 EACH | . | | . | |
| 2150 | 638.3100 Removing Structural Steel Sign Supports | 23.000 EACH | . | | . | |
| 2160 | 638.4000 Moving Small Sign Supports | 4.000 EACH | . | | . | |
| 2170 | 641.1200 Sign Bridge Cantilevered (structure) 956. S-05-195 | LUMP | LUMP | | . | |
| 2180 | 641.6600 Sign Bridge (structure) 952. S-05-191 | LUMP | LUMP | | . | |
| 2190 | 641.6600 Sign Bridge (structure) 961. S-05-234 | LUMP | LUMP | | . | |
| 2200 | 642.5401 Field Office Type D | 2.000 EACH | . | | . | |
| 2210 | 643.0200 Traffic Control Surveillance and Maintenance (project) 001. 1133-10-71 | 250.000 DAY | . | | . | |
| 2220 | 643.0300 Traffic Control Drums | 197,315.000 DAY | . | | . | |
| 2230 | 643.0420 Traffic Control Barricades Type III | 8,636.000 DAY | . | | . | |
| 2240 | 643.0705 Traffic Control Warning Lights Type A | 16,148.000 DAY | . | | . | |

SCHEDULE OF ITEMS

REVISED:

CONTRACT:
20150113011PROJECT(S):
1133-10-71FEDERAL ID(S):
WISC 2015008

CONTRACTOR : _____

| LINE NO | ITEM DESCRIPTION | APPROX. QUANTITY AND UNITS | UNIT PRICE | | BID AMOUNT | |
|------------|---|----------------------------------|------------|-----|------------|-----|
| | | | DOLLARS | CTS | DOLLARS | CTS |
| 2250 | 643.0715 Traffic Control Warning Lights Type C | 35,553.000 DAY | . | . | . | . |
| 2260 | 643.0800 Traffic Control Arrow Boards | 1,110.000 DAY | . | . | . | . |
| 2270 | 643.0900 Traffic Control Signs | 43,687.000 DAY | . | . | . | . |
| 2280 | 643.0910 Traffic Control Covering Signs Type I | 6.000 EACH | . | . | . | . |
| 2290 | 643.0920 Traffic Control Covering Signs Type II | 16.000 EACH | . | . | . | . |
| 2300 | 643.1000 Traffic Control Signs Fixed Message | 1,409.250 SF | . | . | . | . |
| 2310 | 643.1050 Traffic Control Signs PCMS | 723.000 DAY | . | . | . | . |
| 2320 | 643.2000 Traffic Control Detour (project) 001. 1133-10-71 | 1.000 EACH | . | . | . | . |
| 2330 | 643.3000 Traffic Control Detour Signs | 2,530.000 DAY | . | . | . | . |
| 2340 | 645.0111 Geotextile Fabric Type DF Schedule A | 1,185.000 SY | . | . | . | . |
| 2350 | 645.0120 Geotextile Fabric Type HR | 852.000 SY | . | . | . | . |

SCHEDULE OF ITEMS

REVISED:

CONTRACT:
20150113011PROJECT(S):
1133-10-71FEDERAL ID(S):
WISC 2015008

CONTRACTOR : _____

| LINE NO | ITEM DESCRIPTION | APPROX. QUANTITY AND UNITS | UNIT PRICE | | BID AMOUNT | |
|------------|--|----------------------------------|------------|-----|------------|-----|
| | | | DOLLARS | CTS | DOLLARS | CTS |
| 2360 | 645.0140 Geotextile Fabric Type SAS | 13,107.000 SY | . | | . | |
| 2370 | 646.0106 Pavement Marking Epoxy 4-Inch | 116,190.000 LF | . | | . | |
| 2380 | 646.0126 Pavement Marking Epoxy 8-Inch | 13,120.000 LF | . | | . | |
| 2390 | 646.0600 Removing Pavement Markings | 26,720.000 LF | . | | . | |
| 2400 | 646.0841.S Pavement Marking Grooved Wet Reflective Contrast Tape 4-Inch | 2,650.000 LF | . | | . | |
| 2410 | 646.0843.S Pavement Marking Grooved Wet Reflective Contrast Tape 8-Inch | 220.000 LF | . | | . | |
| 2420 | 647.0166 Pavement Marking Arrows Epoxy Type 2 | 2.000 EACH | . | | . | |
| 2430 | 647.0176 Pavement Marking Arrows Epoxy Type 3 | 1.000 EACH | . | | . | |
| 2440 | 647.0356 Pavement Marking Words Epoxy | 3.000 EACH | . | | . | |
| 2450 | 649.0100 Temporary Pavement Marking 4-Inch | 91,220.000 LF | . | | . | |

SCHEDULE OF ITEMS

REVISED:

CONTRACT:
20150113011PROJECT(S):
1133-10-71FEDERAL ID(S):
WISC 2015008

CONTRACTOR : _____

| LINE NO | ITEM DESCRIPTION | APPROX. QUANTITY AND UNITS | UNIT PRICE | | BID AMOUNT | |
|------------|---|----------------------------------|------------|-----|------------|-----|
| | | | DOLLARS | CTS | DOLLARS | CTS |
| 2460 | 649.0400 Temporary Pavement Marking Removable Tape 4-Inch | 9,840.000 LF | . | | . | |
| 2470 | 649.0701 Temporary Pavement Marking 8-Inch | 7,280.000 LF | . | | . | |
| 2480 | 649.0801 Temporary Pavement Marking Removable Tape 8-Inch | 3,150.000 LF | . | | . | |
| 2490 | 649.1800 Temporary Pavement Marking Arrows Removable Tape | 14.000 EACH | . | | . | |
| 2500 | 649.2000 Temporary Pavement Marking Words Removable Tape | 2.000 EACH | . | | . | |
| 2510 | 652.0125 Conduit Rigid Metallic 2-Inch **p** | 1,208.000 LF | . | | . | |
| 2520 | 652.0225 Conduit Rigid Nonmetallic Schedule 40 2-Inch **p** | 572.000 LF | . | | . | |
| 2540 | 653.0222 Junction Boxes 18x12x6-Inch | 7.000 EACH | . | | . | |
| 2550 | 657.6005.S Anchor Assemblies Light Poles on Structures | 6.000 EACH | . | | . | |
| 2560 | 670.0100 Field System Integrator | LUMP | LUMP | | . | |
| 2570 | 670.0200 ITS Documentation | LUMP | LUMP | | . | |

SCHEDULE OF ITEMS

REVISED:

CONTRACT:
20150113011PROJECT(S):
1133-10-71FEDERAL ID(S):
WISC 2015008

CONTRACTOR : _____

| LINE NO | ITEM DESCRIPTION | APPROX. QUANTITY AND UNITS | UNIT PRICE | | BID AMOUNT | |
|------------|---|----------------------------------|------------|-----|------------|-----|
| | | | DOLLARS | CTS | DOLLARS | CTS |
| 2580 | 673.0225.S Install Pole Mounted Cabinet | 1.000 EACH | . | | . | |
| 2590 | 678.0500 Communication System Testing | LUMP | LUMP | | . | |
| 2600 | 690.0150 Sawing Asphalt | 877.000 LF | . | | . | |
| 2610 | 690.0250 Sawing Concrete | 13,920.000 LF | . | | . | |
| 2620 | ASP.1T0A On-the-Job Training Apprentice at \$5.00/HR | 2,100.000 HRS | 5.00000 | | 10500.00 | |
| 2630 | ASP.1T0G On-the-Job Training Graduate at \$5. 00/HR | 5,760.000 HRS | 5.00000 | | 28800.00 | |
| 2640 | SPV.0035 Special 001. Drainage Blanket | 5,436.000 CY | . | | . | |
| 2650 | SPV.0035 Special 002. Roadway Embankment | 230,660.000 CY | . | | . | |
| 2660 | SPV.0035 Special 003. Excavation Of Phragmites Soil | 760.000 CY | . | | . | |
| 2670 | SPV.0035 Special 004. Granular Material For Es Fabric | 816.000 CY | . | | . | |

SCHEDULE OF ITEMS

REVISED:

CONTRACT:
20150113011PROJECT(S):
1133-10-71FEDERAL ID(S):
WISC 2015008

CONTRACTOR : _____

| LINE NO | ITEM DESCRIPTION | APPROX. QUANTITY AND UNITS | UNIT PRICE | | BID AMOUNT | |
|------------|---|----------------------------------|------------|-----|------------|-----|
| | | | DOLLARS | CTS | DOLLARS | CTS |
| 2680 | SPV.0035 Special 700. High Performance Concrete (Hpc) Masonry Structures **P** | 2,368.000 CY | . | . | . | . |
| 2690 | SPV.0060 Special 001. Cpm Baseline Schedule | 1.000 EACH | . | . | . | . |
| 2700 | SPV.0060 Special 002. Cpm Schedule Monthly Updates | 8.000 EACH | . | . | . | . |
| 2710 | SPV.0060 Special 003. Vibrating Wire Piezometer Instrumentation System, Delivered | 1.000 EACH | . | . | . | . |
| 2720 | SPV.0060 Special 004. Settlement Gauges | 1.000 EACH | . | . | . | . |
| 2730 | SPV.0060 Special 005. Concrete Barrier Transition Type S56 (54-Inch Base) To S56 (36-Inch Base) | 1.000 EACH | . | . | . | . |
| 2740 | SPV.0060 Special 006. Concrete Barrier Transition Type V56 To S56 (36-Inch Wide Base) | 6.000 EACH | . | . | . | . |
| 2750 | SPV.0060 Special 007. Concrete Barrier Transition Type Iv V33.5 To S42 Block | 2.000 EACH | . | . | . | . |
| 2760 | SPV.0060 Special 008. Concrete Barrier Transition Type I V33.5 To S56 Block | 2.000 EACH | . | . | . | . |

SCHEDULE OF ITEMS

REVISED:

CONTRACT:
20150113011PROJECT(S):
1133-10-71FEDERAL ID(S):
WISC 2015008

CONTRACTOR : _____

| LINE NO | ITEM DESCRIPTION | APPROX. QUANTITY AND UNITS | UNIT PRICE | | BID AMOUNT | |
|------------|---|----------------------------------|------------|-----|------------|-----|
| | | | DOLLARS | CTS | DOLLARS | CTS |
| 2770 | SPV.0060 Special 010. Section Survey Monuments, Reconstruct Project | 3.000 EACH | . | | . | |
| 2780 | SPV.0060 Special 011. Removing Sand Barrel Array And Concrete Pad At Sign Structure Support | 3.000 EACH | . | | . | |
| 2790 | SPV.0060 Special 102. Storm Sewer Tap | 1.000 EACH | . | | . | |
| 2800 | SPV.0060 Special 103. Inlet Cover Type Dw | 3.000 EACH | . | | . | |
| 2810 | SPV.0060 Special 104. Drain Slotted Vane Type A 3-Foot | 1.000 EACH | . | | . | |
| 2820 | SPV.0060 Special 105. Drain Slotted Vane Type B 6-Foot | 9.000 EACH | . | | . | |
| 2830 | SPV.0060 Special 107. Temporary Drainage Manhole 4-Ft Diameter | 6.000 EACH | . | | . | |
| 2840 | SPV.0060 Special 108. Temporary Inlet Cover | 4.000 EACH | . | | . | |
| 2850 | SPV.0060 Special 109. Temporary Manhole Cover | 2.000 EACH | . | | . | |
| 2860 | SPV.0060 Special 111. Inlet Covers Bolted | 18.000 EACH | . | | . | |

SCHEDULE OF ITEMS

REVISED:

CONTRACT:
20150113011PROJECT(S):
1133-10-71FEDERAL ID(S):
WISC 2015008

CONTRACTOR : _____

| LINE NO | ITEM DESCRIPTION | APPROX. QUANTITY AND UNITS | UNIT PRICE | | BID AMOUNT | |
|------------|---|----------------------------------|------------|-----|------------|-----|
| | | | DOLLARS | CTS | DOLLARS | CTS |
| 2870 | SPV.0060 Special 114. Storm Sewer Plug | 24.000 EACH | . | | . | |
| 2880 | SPV.0060 Special 115. Cover Plates | 8.000 EACH | . | | . | |
| 2890 | SPV.0060 Special 150. Inlet Protection Type A Special | 5.000 EACH | . | | . | |
| 2900 | SPV.0060 Special 151. Sedimentation Basin | 10.000 EACH | . | | . | |
| 2910 | SPV.0060 Special 152. Temporary Stone Ditch Checks | 25.000 EACH | . | | . | |
| 2920 | SPV.0060 Special 153. Tracking Pad Maintenance | 2.000 EACH | . | | . | |
| 2930 | SPV.0060 Special 200. Maintenance And Removal Of Crash Cushions Temp Left In Place By Others | 10.000 EACH | . | | . | |
| 2940 | SPV.0060 Special 201. Temporary Thrie Beam Connection | 2.000 EACH | . | | . | |
| 2950 | SPV.0060 Special 205. Temporarily Mount And Locate Type I Signs | 3.000 EACH | . | | . | |
| 2960 | SPV.0060 Special 206. Left In Place Delineator Temporary | 255.000 EACH | . | | . | |

SCHEDULE OF ITEMS

REVISED:

CONTRACT:
20150113011PROJECT(S):
1133-10-71FEDERAL ID(S):
WISC 2015008

CONTRACTOR : _____

| LINE NO | ITEM DESCRIPTION | APPROX. QUANTITY AND UNITS | UNIT PRICE | | BID AMOUNT | |
|------------|---|----------------------------------|------------|-----|------------|-----|
| | | | DOLLARS | CTS | DOLLARS | CTS |
| 2970 | SPV.0060 Special 207. Crash Cushion Temporary Left In Place | 1.000 EACH | . | | . | |
| 2980 | SPV.0060 Special 310. Pavement Marking Grooved Preformed Thermoplastic Arrows Type 5 | 1.000 EACH | . | | . | |
| 3020 | SPV.0060 Special 400. Install Dynamic Message Sign | 1.000 EACH | . | | . | |
| 3030 | SPV.0060 Special 401. Install Ip Radio | 1.000 EACH | . | | . | |
| 3040 | SPV.0060 Special 402. Salvage Dynamic Message Sign | 1.000 EACH | . | | . | |
| 3050 | SPV.0060 Special 403. Salvage Pole Mounted Cabinet | 1.000 EACH | . | | . | |
| 3060 | SPV.0060 Special 404. Salvage Ip Radio | 1.000 EACH | . | | . | |
| 3070 | SPV.0060 Special 950. Bar Couplers Vertical Footing Reinforcement No. 7 | 60.000 EACH | . | | . | |
| 3080 | SPV.0060 Special 951. Bar Couplers Vertical Footing Reinforcement No. 8 | 366.000 EACH | . | | . | |
| 3090 | SPV.0075 Special 150. Street Sweeping | 500.000 HRS | . | | . | |

SCHEDULE OF ITEMS

REVISED:

CONTRACT:
20150113011PROJECT(S):
1133-10-71FEDERAL ID(S):
WISC 2015008

CONTRACTOR : _____

| LINE NO | ITEM DESCRIPTION | APPROX. QUANTITY AND UNITS | UNIT PRICE | | BID AMOUNT | |
|------------|--|----------------------------------|------------|-----|------------|-----|
| | | | DOLLARS | CTS | DOLLARS | CTS |
| 3100 | SPV.0075 Special 200. Truck Mounted Attenuator With Operator | 150.000 HRS | . | . | . | . |
| 3110 | SPV.0075 Special 201. Truck Mounted Attenuator Without Operator | 150.000 HRS | . | . | . | . |
| 3120 | SPV.0085 Special 700. Bar Steel Reinforcement Hs Stainless Bridges | 5,930.000 LB | . | . | . | . |
| 3130 | SPV.0090 Special 003. Concrete Curb & Gutter 32-Inch Type A Full Depth **p** | 111.000 LF | . | . | . | . |
| 3140 | SPV.0090 Special 005. Concrete Curb & Gutter 56-Inch Type A Full Depth **p** | 16.000 LF | . | . | . | . |
| 3150 | SPV.0090 Special 008. Concrete Curb & Gutter 6-Inch Sloped 36-Inch Type A Full Depth **p** | 48.000 LF | . | . | . | . |
| 3160 | SPV.0090 Special 009. Concrete Curb & Gutter 6-Inch Sloped 60-Inch Type A Full Depth **p** | 1,090.000 LF | . | . | . | . |
| 3170 | SPV.0090 Special 012. Strip Drains | 107,277.000 LF | . | . | . | . |
| 3200 | SPV.0090 Special 016. Concrete Curb & Gutter And Barrier, Cold Weather Covering, Plastic 1 Layer | 200.000 LF | . | . | . | . |

SCHEDULE OF ITEMS

REVISED:

CONTRACT:
20150113011PROJECT(S):
1133-10-71FEDERAL ID(S):
WISC 2015008

CONTRACTOR : _____

| LINE NO | ITEM DESCRIPTION | APPROX. QUANTITY AND UNITS | UNIT PRICE | | BID AMOUNT | |
|------------|---|----------------------------------|------------|-----|------------|-----|
| | | | DOLLARS | CTS | DOLLARS | CTS |
| 3210 | SPV.0090 Special 017. Concrete Curb & Gutter And Barrier, Cold Weather Covering, Plastic 2 Layers | 200.000 LF | . | | . | |
| 3220 | SPV.0090 Special 018. Conc C&G And Barrier, Cold Weather Covering, Plastic/Hay/Plastic Or Blanket | 200.000 LF | . | | . | |
| 3230 | SPV.0090 Special 100. Storm Sewer Temporary 18-Inch | 1,075.000 LF | . | | . | |
| 3240 | SPV.0090 Special 101. Storm Sewer Temporary 24-Inch | 132.000 LF | . | | . | |
| 3250 | SPV.0090 Special 200. Concrete Barrier Temporary Precast Anchoring | 1,000.000 LF | . | | . | |
| 3260 | SPV.0090 Special 201. Glare Screens Temporary | 1,070.000 LF | . | | . | |
| 3270 | SPV.0090 Special 202. Concrete Barrier Temporary Precast Left In Place | 33,175.000 LF | . | | . | |
| 3280 | SPV.0090 Special 700. Downspout Rtrp 6-Inch | 8.000 LF | . | | . | |
| 3290 | SPV.0105 Special 001. Survey Project 1133-10-71 | LUMP | LUMP | | . | |

SCHEDULE OF ITEMS

REVISED:

CONTRACT:
20150113011PROJECT(S):
1133-10-71FEDERAL ID(S):
WISC 2015008

CONTRACTOR : _____

| LINE NO | ITEM DESCRIPTION | APPROX. QUANTITY AND UNITS | UNIT PRICE | | BID AMOUNT | |
|------------|---|----------------------------------|-------------|-----|------------|-----|
| | | | DOLLARS | CTS | DOLLARS | CTS |
| 3300 | SPV.0105 Special 004. Geotechnical Instrumentation | LUMP | LUMP | | | . |
| 3310 | SPV.0105 Special 007. Concrete Pavement Joint Layout | LUMP | LUMP | | | . |
| 3320 | SPV.0105 Special 201. Maintaining Traffic Control For Duck Creek Recreational Vehicles | LUMP | LUMP | | | . |
| 3330 | SPV.0165 Special 200. Traffic Control Signs Fixed Message Left In Place | SF | 192.000 | | | . |
| 3340 | SPV.0165 Special 250. Permanent Covering Signs Type I | SF | 82.000 | | | . |
| 3350 | SPV.0165 Special 700. Architectural Surface Treatment | SF | 8,083.000 | | | . |
| 3360 | SPV.0165 Special 701. Staining Concrete | SF | 43,502.000 | | | . |
| 3370 | SPV.0165 Special 702. Staining Concrete Brick | SF | 6,753.000 | | | . |
| 3380 | SPV.0165 Special 703. Longitudinal Grooving Bridge Deck | SF | 184,534.000 | | | . |
| 3390 | SPV.0165 Special 705. Temporary Shoring Railroad B-05-674 | SF | 590.000 | | | . |

SCHEDULE OF ITEMS

REVISED:

CONTRACT:
20150113011PROJECT(S):
1133-10-71FEDERAL ID(S):
WISC 2015008

CONTRACTOR : _____

| LINE NO | ITEM DESCRIPTION | APPROX. QUANTITY AND UNITS | UNIT PRICE | | BID AMOUNT | |
|------------|--|----------------------------------|------------|-----|------------|-----|
| | | | DOLLARS | CTS | DOLLARS | CTS |
| 3400 | SPV.0165 Special 706. Temporary Shoring Railroad B-05-675 | 280.000 SF | . | . | . | . |
| 3410 | SPV.0165 Special 850. Wall Wire Faced Mechanically Stabilized Earth Lrfd/Qmp Pilot ***p** | 19,463.000 SF | . | . | . | . |
| 3420 | SPV.0165 Special 851. Prestressed Precast Concrete Wall Panel ***p** | 19,463.000 SF | . | . | . | . |
| 3430 | SPV.0165 Special 950. Sign Blanks Left-In-Place | 297.000 SF | . | . | . | . |
| 3440 | SPV.0180 Special 008. Concrete Pavement Variable Depth | 1,173.000 SY | . | . | . | . |
| 3450 | SPV.0180 Special 009. Geogrid Reinforcement | 5,000.000 SY | . | . | . | . |
| 3460 | SPV.0180 Special 011. Concrete Pavement, Cold Weather Covering, Plastic 1 Layer | 5,000.000 SY | . | . | . | . |
| 3470 | SPV.0180 Special 012. Concrete Pavement, Cold Weather Covering, Plastic 2 Layer | 3,000.000 SY | . | . | . | . |
| 3480 | SPV.0180 Special 013. Concrete Pavement, Cold Weather Covering, Plastic/Hay/Plastic Or Blanket | 2,000.000 SY | . | . | . | . |

SCHEDULE OF ITEMS

REVISED:

CONTRACT:
20150113011PROJECT(S):
1133-10-71FEDERAL ID(S):
WISC 2015008

CONTRACTOR : _____

| LINE NO | ITEM DESCRIPTION | APPROX. QUANTITY AND UNITS | UNIT PRICE | | BID AMOUNT | |
|------------|---|----------------------------------|------------|-----|------------|-----|
| | | | DOLLARS | CTS | DOLLARS | CTS |
| 3490 | SPV.0180 Special 014. Install Geotextile Fabric Type Es | 2,448.000 SY | . | . | . | . |
| 3500 | SPV.0195 Special 005. Cold Patch | 10.000 TON | . | . | . | . |
| 3510 | SPV.0195 Special 006. Mill And Pave Joint | 108.000 TON | . | . | . | . |
| 3520 | SPV.0195 Special 007. Mill And Pave Rumble Strip | 50.000 TON | . | . | . | . |
| 3530 | 204.0280 Sealing Pipes | 2.000 EACH | . | . | . | . |
| 3540 | 204.0291.S Abandoning Sewer | 4.000 CY | . | . | . | . |
| 3550 | 460.4000 HMA Cold Weather Paving | 156.000 TON | . | . | . | . |
| 3560 | SPV.0090 Special 013. Pre-Bored Strip Drains | 26,819.000 LF | . | . | . | . |
| 3570 | 310.0110 Base Aggregate Open Graded | 1,550.000 TON | . | . | . | . |
| 3580 | 511.2200 Temporary Shoring Left in Place (structure) 006. B-05-669 | 1,200.000 SF | . | . | . | . |
| 3590 | 645.0112 Geotextile Fabric Type DF Schedule B | 2,315.000 SY | . | . | . | . |
| | SECTION 0001 TOTAL | | | | . | . |
| | TOTAL BID | | | | . | . |