



Wisconsin Department of Transportation

February 5, 2015

Division of Transportation Systems Development

Bureau of Project Development
 4802 Sheboygan Avenue, Rm 601
 P O Box 7916
 Madison, WI 53707-7916

Telephone: (608) 266-1631
 Facsimile (FAX): (608) 266-8459

NOTICE TO ALL CONTRACTORS:

**Proposal #07: 5411-02-74, WISC 2014 433
 Stoughton - Madison
 Cottage Grove Road SB Bridge
 B-13-632
 USH 51
 Dane County**

**5411-02-75
 Stoughton - Madison
 Cottage Grove Road SB Bridge
 B-13-632
 USH 51
 Dane County**

Letting of February 10, 2015

This is Addendum No. 1, which provides for the following:

Special Provisions

Revised Special Provisions	
Article No.	Description
16	Public Convenience and Safety
30	Special Compaction
84	Fence Chain Link Polymer-Coated 4-Ft., Item SPV.0090.04; 6-Ft., Item SPV. 0090.05.

Added Special Provisions	
Article No.	Description
112	Holiday Work Restrictions
113	Salvaged Hydric Soil

Schedule of Items

Revised Bid Item Quantities					
Bid Item	Item Description	Unit	Old Quantity	Revised Quantity	Proposal Total
205.0100	Excavation Common	CY	87,512	88,852	88,852
205.0400	Marsh Excavation	CY	30,096	33,096	33,096
208.0100	Borrow	CY	87,471	87,264	87,264
603.1142	Concrete Barrier Type S42	LF	915	839	839
625.0500	Salvaged Topsoil	SY	54,500	48,683	48,683
650.7500	Construction Staking Concrete Barrier	LF	915	839	839
SPV.0060.12	Sanitary Sewer Tap	EACH	4	6	6
SPV.0060.21	Sanitary Force Main Connection	EACH	2	1	1

Added Bid Item Quantities					
Bid Item	Item Description	Unit	Old Quantity	Revised Quantity	Proposal Total
603.3513	Concrete Barrier Transition Type S32 to S36	EACH	0	2	2
603.3535	Concrete Barrier Transition Type S36 to S42	EACH	0	2	2
SPV.0180.02	Salvaged Hydric Soil	SY	0	5817	5817

Plan Sheets

Revised Plan Sheets	
Plan Sheet	Plan Sheet Title (brief description of changes to sheet)
39	Paving Detail – Updated to call out bid items that were added above.
71	Sanitary Sewer plan sheet – updated to correct “C900” pipe callout to SDR 35 – matches bid item.
73	Sanitary Sewer plan sheet – updated to show additional “Tap” callout.
223	Miscellaneous Quantity plan sheet – Updated to include quantity changes to Excavation Common, Marsh Excavation, and Borrow
224	Miscellaneous Quantity plan sheet – Updated to include quantity changes to Excavation Common, Marsh Excavation, and Borrow
225	Miscellaneous Quantity plan sheet – Updated the Base Aggregate Dense Table and Select Crushed Material Table (first two quantity rows of each) to list the correct Stage Completed. The first two rows were changed from stages 1B and 2 to stages 2, 3, and 4.
228	Miscellaneous Quantity plan sheet – Updated to include quantity changes to the Concrete Barrier Wall Type S42 Table and to include information changes (Back Width Column) to the Crash Cushions Table.
231	Miscellaneous Quantity plan sheet – Updated to include quantity changes to the bid item 625.0500 in the Finishing Items Table. Also add the Salvaged Hydric Soil Table.
248	Miscellaneous Quantity plan sheet – Updated to include quantity changes to the bid items SPV.0060.12 and SPV.0060.21 in the Sanitary Sewer Structures

The responsibility for notifying potential subcontractors and suppliers of these changes remains with the prime contractor.

Sincerely,

Mike Coleman

Proposal Development Specialist
Proposal Management Section

ADDENDUM NO. 1

5411-02-74/75

February 5, 2015

Special Provisions

16. Public Convenience and Safety

Replace entire article language with the following:

Revise standard spec 107.8(6) as follows:

Check for and comply with local ordinances governing the hours of operation of construction equipment. Do not operate motorized construction equipment from 7 PM until the following 7 AM, except for work required for the polymer overlay of the northbound USH 51 bridge (B-13-008); demolition of the southbound USH 51 bridge (B-13-210); or placement of the girders for the southbound USH 51 bridge (B-13-632) or the southbound exit ramp bridge (B-13-660), unless written approval is granted by the engineer.

30. Special Compaction

*Revise the Article title to: **30. Standard Compaction***

Replace the entire article language with the following:

Add the following to standard spec 207.3.6.1:

(5) Compact embankments, outside the roadway foundation as specified in 207.3.6.1(4), unless those embankment areas are adjacent to the proposed MSE walls. In embankments adjacent to the proposed MSE walls, compact the embankment areas outside the roadway foundation as specified in 207.3.6.2.

Add the following to standard spec 207.3.6.2:

(4) Standard compaction is required for all embankment construction from the face of MSE walls to the finished slope. Standard compaction is also required for embankment construction below the MSE wall face, footing, and MSE wall backfill structure.

84. Fence Chain Link Polymer-Coated 4-Ft., Item SPV.0090.04; 6-Ft., Item SPV. 0090.05.

*Add the following to **B.2 Framework**:*

For fence installed in soil or earth, furnish concrete in accordance to the plan details and standard specifications for Fence Chain Link. Furnish posts of sufficient length for setting in accordance to the detail for Fence Chain Link. All other materials shall be as noted within this article.

112. Holiday Work Restrictions

Do not perform work on, nor haul materials of any kind along or across any portion of the highway carrying USH 51 traffic, and entirely clear the traveled way and shoulders of such portions of the highway of equipment, barricades, signs, lights, and any other material that might impede the free flow of traffic during the following holiday periods:

- From noon Friday, May 22, 2015 to 6:00 AM Tuesday, May 26, 2015 for Memorial Day;
 - From noon Thursday, July 3, 2015 to 6:00 AM Monday, July 6, 2015 for Independence Day;
 - From noon Friday, September 4, 2015 to 6:00 AM Tuesday, September 8, 2015 for Labor Day;
 - From noon Friday, November 20, 2015 to 6:00 AM Monday, November 23, 2015 for opening weekend of deer hunting season;
 - From noon Wednesday, November 25, 2015 to 6:00 AM Monday, November 30, 2015 for Thanksgiving;
 - From noon, Friday, May 27, 2016 to 6:00 AM Tuesday, May 31, 2016 for Memorial Day;
 - From noon, Friday, July 1, 2016 to 6:00 AM Tuesday, July 5, 2016 for Independence Day;
 - From noon, Friday, September 2, 2016 to 6:00 AM Tuesday, September 6, 2016 for Labor Day
- 107-005 (20050502)

113. Salvaged Hydric Soil, Item SPV.0180.02.

A Description

This special provision describes salvaging hydric soils as described in the Wetlands article of the special provisions, in accordance to standard spec 625, and as hereinafter provided.

B Material

Salvage hydric soils material as described in the Wetlands article of the special provisions and in accordance to standard spec 625.

C Construction

Excavate the existing topsoil in the area designated for placement of the hydric soils, to a minimum depth of two feet, as detailed in the plans.

Place hydric soils at a minimum thickness of two feet and in accordance to standard spec 625. Excess hydric soil material may be hauled from the site or used on the project as directed by the engineer.

D. Measurement

The department will measure Salvaged Hydric Soil by the square yard, acceptably completed.

E. Payment

The department will pay for measured quantities at the contract unit price under the following bid item:

ITEM NUMBER	DESCRIPTION	UNIT
SPV.0180.02	Salvage Hydric Soil	SY

Payment for Salvaged Hydric Soil is in accordance to standard spec 625 and as hereinafter provided.

Excavation of the top two feet of material within the areas of marsh excavation is paid for under the Marsh Excavation standard bid item.

Excavation of the area where the hydric soils are to be placed is paid for under the Excavation Common (EBS) standard bid item.

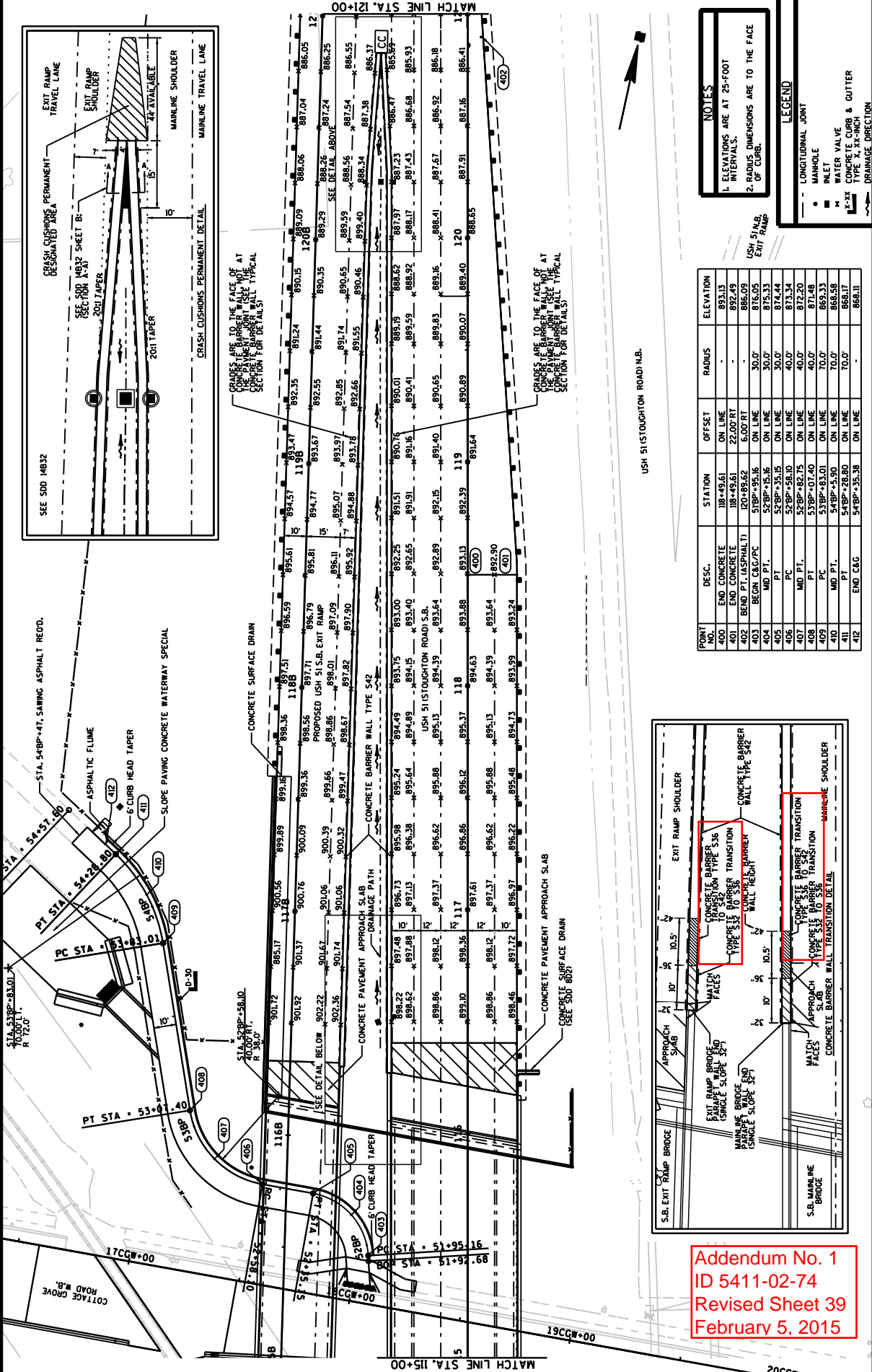
Schedule of Items

Attached, dated February 5, 2015, are the revised Schedule of Items Pages 4, 5, 12, 17, 26, 35, 36, 40, and 41.

Plan Sheets

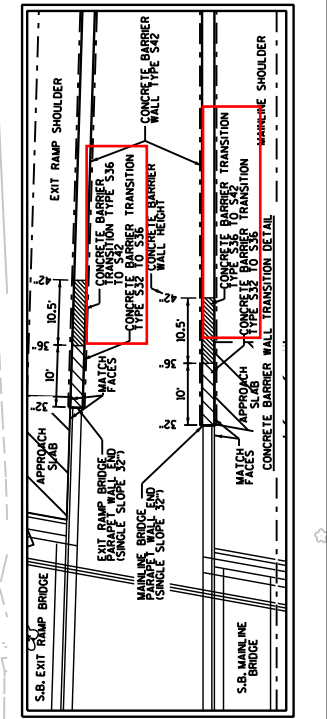
The following 8½ x 11-inch sheets are attached and made part of the plans for this proposal:
Revised: 39, 71, 73, 223, 224, 225, 228, 231, and 248.

END OF ADDENDUM



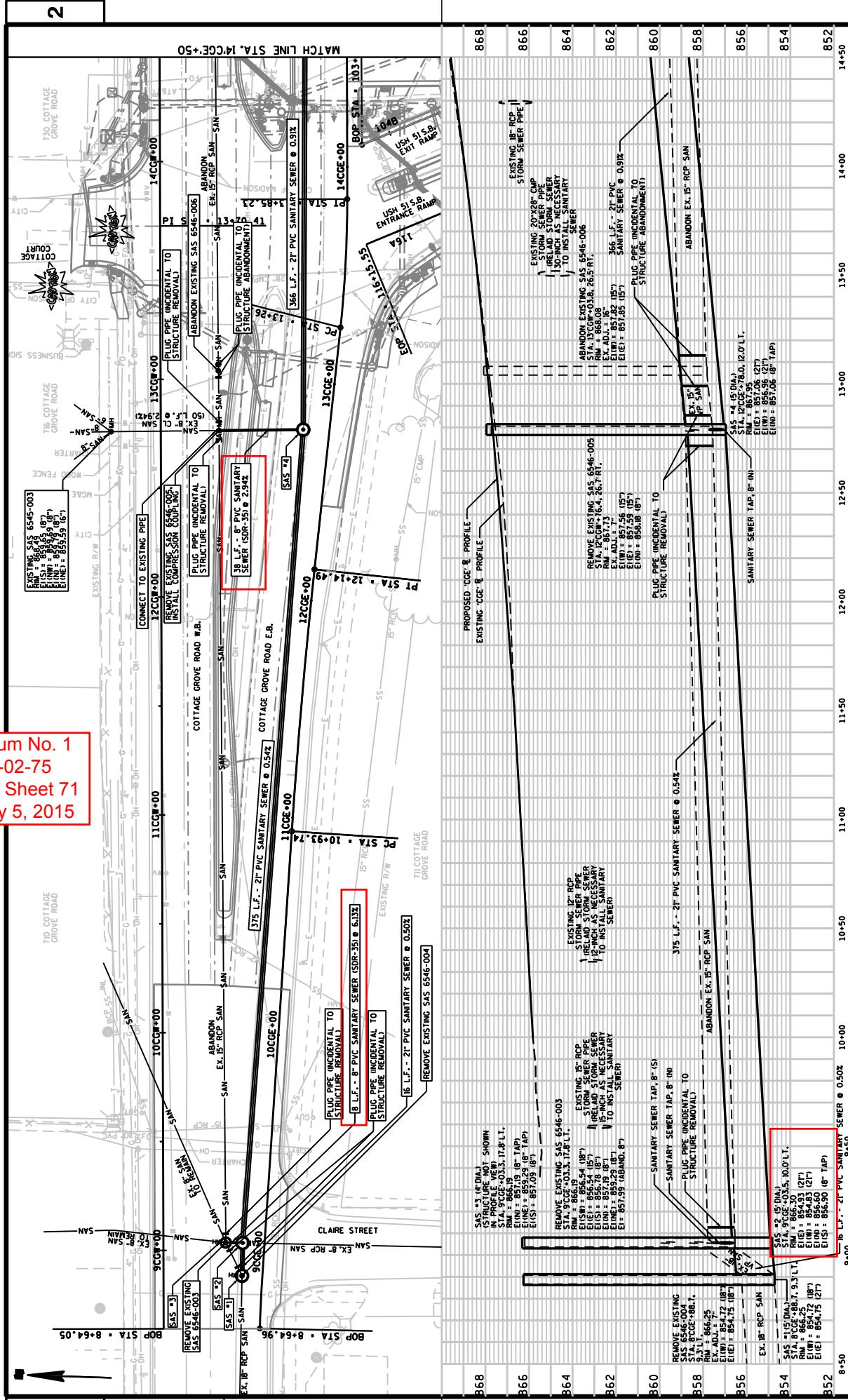
FROM NO.	DESC.	STATION	OFFSET	RADIUS	ELEVATION
400	END CONCRETE	118+49.61	ON LINE	-	893.13
401	END CONCRETE	118+49.61	22.00 RT	-	892.49
402	BEND PT. (ASPHALT)	120+89.62	6.00 RT	-	886.09
403	BEGIN C&G/PC	52BP+55.16	ON LINE	30.0'	876.05
404	MD PT.	52BP+55.16	ON LINE	30.0'	875.33
405	MD PT.	52BP+55.16	ON LINE	30.0'	874.44
406	PC	52BP+58.10	ON LINE	40.0'	873.34
407	MD PT.	52BP+82.75	ON LINE	40.0'	872.20
408	PT	53BP+07.40	ON LINE	40.0'	871.48
409	PC	53BP+83.01	ON LINE	70.0'	869.33
410	MD PT.	54BP+5.90	ON LINE	70.0'	868.58
411	PT	54BP+28.80	ON LINE	70.0'	868.17
412	END C&G	54BP+35.38	ON LINE	-	868.11

- NOTES**
- ELEVATIONS ARE AT 25-FOOT INTERVALS.
 - RADIUS DIMENSIONS ARE TO THE FACE OF CURB.
- LEGEND**
- LONGITUDINAL JOINT
 - MANHOLE
 - INLET
 - WATER VALVE
 - CONCRETE CURB & GUTTER
 - TYPE X, X'-INCH
 - DRAINAGE DIRECTION

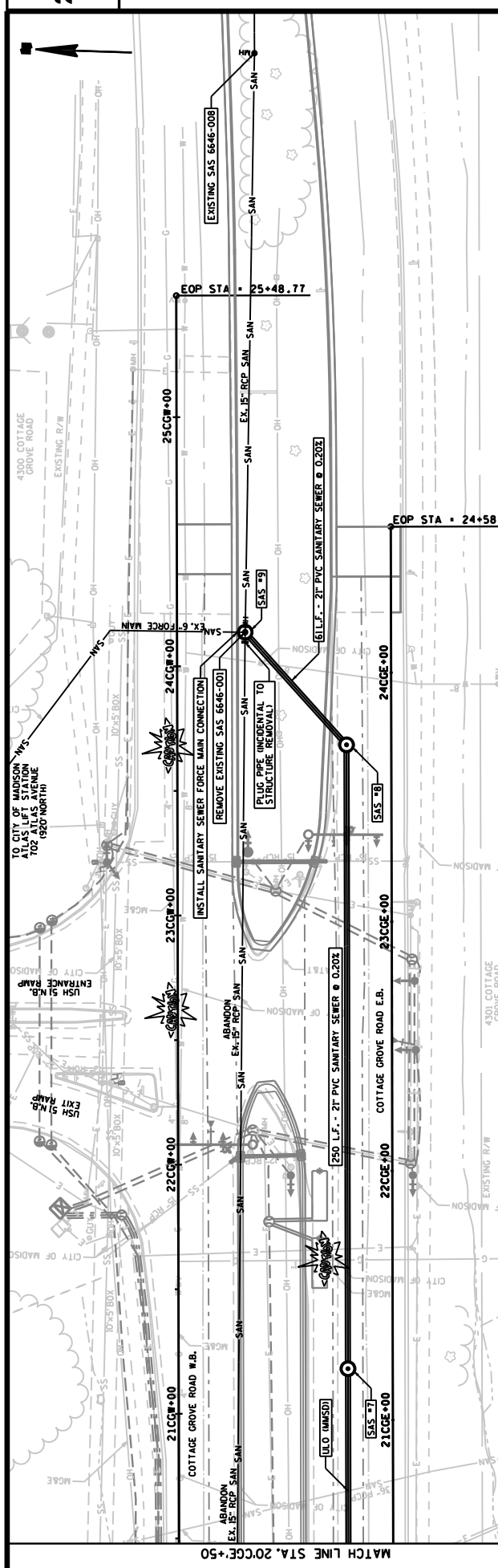


Addendum No. 1
 ID 5411-02-74
 Revised Sheet 39
 February 5, 2015

Addendum No. 1
 ID 5411-02-75
 Revised Sheet 71
 February 5, 2015



Station	Description	Station	Description
868	REMOVE EXISTING SAS 6546-003 STA. 90CE+88.7, 9.3' LT. RM = 866.20 E(IN) = 854.72 (21) E(EN) = 854.75 (21)	11+50	REMOVE EXISTING SAS 6546-003 STA. 100CE+88.7, 9.3' LT. RM = 866.20 E(IN) = 854.72 (21) E(EN) = 854.75 (21)
866	REMOVE EXISTING SAS 6546-004 STA. 90CE+88.7, 9.3' LT. RM = 866.20 E(IN) = 854.72 (21) E(EN) = 854.75 (21)	12+00	REMOVE EXISTING SAS 6546-003 STA. 100CE+88.7, 9.3' LT. RM = 866.20 E(IN) = 854.72 (21) E(EN) = 854.75 (21)
864	REMOVE EXISTING SAS 6546-005 STA. 90CE+88.7, 9.3' LT. RM = 866.20 E(IN) = 854.72 (21) E(EN) = 854.75 (21)	12+50	REMOVE EXISTING SAS 6546-003 STA. 100CE+88.7, 9.3' LT. RM = 866.20 E(IN) = 854.72 (21) E(EN) = 854.75 (21)
862	REMOVE EXISTING SAS 6546-006 STA. 90CE+88.7, 9.3' LT. RM = 866.20 E(IN) = 854.72 (21) E(EN) = 854.75 (21)	13+00	REMOVE EXISTING SAS 6546-003 STA. 100CE+88.7, 9.3' LT. RM = 866.20 E(IN) = 854.72 (21) E(EN) = 854.75 (21)
860	REMOVE EXISTING SAS 6546-007 STA. 90CE+88.7, 9.3' LT. RM = 866.20 E(IN) = 854.72 (21) E(EN) = 854.75 (21)	13+50	REMOVE EXISTING SAS 6546-003 STA. 100CE+88.7, 9.3' LT. RM = 866.20 E(IN) = 854.72 (21) E(EN) = 854.75 (21)
858	REMOVE EXISTING SAS 6546-008 STA. 90CE+88.7, 9.3' LT. RM = 866.20 E(IN) = 854.72 (21) E(EN) = 854.75 (21)	14+00	REMOVE EXISTING SAS 6546-003 STA. 100CE+88.7, 9.3' LT. RM = 866.20 E(IN) = 854.72 (21) E(EN) = 854.75 (21)
856	REMOVE EXISTING SAS 6546-009 STA. 90CE+88.7, 9.3' LT. RM = 866.20 E(IN) = 854.72 (21) E(EN) = 854.75 (21)	14+50	REMOVE EXISTING SAS 6546-003 STA. 100CE+88.7, 9.3' LT. RM = 866.20 E(IN) = 854.72 (21) E(EN) = 854.75 (21)
854	REMOVE EXISTING SAS 6546-010 STA. 90CE+88.7, 9.3' LT. RM = 866.20 E(IN) = 854.72 (21) E(EN) = 854.75 (21)		
852	REMOVE EXISTING SAS 6546-011 STA. 90CE+88.7, 9.3' LT. RM = 866.20 E(IN) = 854.72 (21) E(EN) = 854.75 (21)		



Station	Description
2050	2050 L.F. - 24\"/>
2100	EXISTING 36\"/>
2150	2150 L.F. - 24\"/>
2200	ABANDON EX. 15\"/>
2250	2250 L.F. - 24\"/>
2300	EXISTING 15\"/>
2350	2350 L.F. - 24\"/>
2400	EXISTING 6\"/>
2450	2450 L.F. - 24\"/>
2500	EXISTING 6\"/>
2550	2550 L.F. - 24\"/>
26+50	26+50 L.F. - 24\"/>

Addendum No. 1
ID 5411-02-75
Revised Sheet 73
February 5, 2015

PROJECT NO: 5411-02-75	COUNTY: DANE	SANITARY SEWER: COTTAGE GROVE ROAD	SHEET: 73	
HWY: USH 51		*NOTE: PIPE SHALL CONFORM TO PSIS, ASTM F679 @ 58		

FILE NAME: P:\90s\93\0093080\CADD\PROJECTS\San_Tory Sewer\Son_03.dgn
 PLOT DATE: 2/4/2015
 PLOT BY: ckleier
 PLOT SCALE: 1:161.8181
 WISDOT/CADD S-SHEET 410

EARTHWORK SUMMARY

Division 1 TC - STAGE 1	From/To Station	Location	Common Excavation (1) 205.0(100)		Salvaged/ Unusable Pavement Material (4)	Available Material (5)	Marsh Excavation (6)	Reduced Marsh in Fill Backfill (10)	Expanded Marsh Backfill (10)	Unexpanded Fill		Mass Ordinate +/- (14)	Waste	Borrow	Select Borrow	Comment:
			Cut (2)	EBS Excavation (3)						Factor	Factor					
CATEGORY 0010	99+55.00 to 107+00	Temporary Pavement Stage 1B (south end)	130	0	0	130	0	0	1.50	65	1.95	48	48	(Item #208.0100)	451.43	Temporary widening
	107+50.00 to 114+91.68	US 51 SB Mainline (south end)	17	0	0	17	0	0	0	33,758	42,197	42,180	42,180			
	104+75.00 to 116+40.00	SB Entrance Ramp	68,336	0	0	71,633	0	0	0	11,575	10,901	60,792	60,792			
	104+50.00 to 119+53+20	SB Exit Ramp (south end)	801	0	0	346	0	0	0	44,857	33,475	-33,129	-33,129			451.43
	108+00 to 114+50	Release	0	0	0	0	0	0	0	0	0	-50	-50			
	107+00 to 112+00	Temporary Pavement Stage 2 (south end)	1,310	0	0	1,274	0	0	0	34,638	48,277	0	0			Temporary widening and Stage 2 temporary roadway
		UNDISTRIBUTED	0	300	0	0	3,000	0	4,500	500	625	425	425			
		PROJECT SUBTOTAL	74,252	491	73,331	33,096	20,912	49,643	90,775	87,329	-15,142	-15,142	151,142			

Temporary Pavement Stage 2 fills are accounted for in the US 51 SB Mainline quantity. They are accounted for in these cross sections and are shown again on this line for reference only.

Division 1 TC - STAGE 2 & 3	From/To Station	Location	Common Excavation (1) 205.0(100)		Salvaged/ Unusable Pavement Material (4)	Available Material (5)	Marsh Excavation (6)	Reduced Marsh in Fill Backfill (10)	Expanded Marsh Backfill (10)	Unexpanded Fill		Mass Ordinate +/- (14)	Waste	Borrow	Select Borrow	Comment:
			Cut (2)	EBS Excavation (3)						Factor	Factor					
CATEGORY 0010	99+75.07 to 114+91.68	US 51 SB Mainline (south end)	4,324	0	1,097	3,227	0	0	1.50	10,159	12,669	-9,471	-9,471	(Item #208.0100)	451.43	Temporary Pavement Removals
	100+00 to 112+00	Temporary Pavement Stage 2	794	0	794	0	0	0	0	0	0	0	0			Temporary Pavement Removals
	124+00 to 137+00	Temporary Pavement Stage 2	1,657	0	1,289	448	0	0	0	0	0	448	448			Temporary Pavement Removals
	94+57 to 108+52	Temporary Pavement Stage 3 (south end)	50	0	0	50	0	0	0	333	416	-366	-366			Temporary widening
		PROJECT SUBTOTAL	6,765	0	3,090	3,725	0	0	0	10,492	13,115	-9,838	-9,838			

Division 1 TC - STAGE 4	From/To Station	Location	Common Excavation (1) 205.0(100)		Salvaged/ Unusable Pavement Material (4)	Available Material (5)	Marsh Excavation (6)	Reduced Marsh in Fill Backfill (10)	Expanded Marsh Backfill (10)	Unexpanded Fill		Mass Ordinate +/- (14)	Waste	Borrow	Select Borrow	Comment:
			Cut (2)	EBS Excavation (3)						Factor	Factor					
CATEGORY 0010	94+57 to 108+52	US 51 SB Mainline (south end)	560	0	0	560	0	0	0	0	1.25	560	560	(Item #208.0100)	451.43	grading
		PROJECT SUBTOTAL	560	0	0	560	0	0	0	0	0	560	560			

Division 2 TC - STAGE 1	From/To Station	Location	Common Excavation (1) 205.0(100)		Salvaged/ Unusable Pavement Material (4)	Available Material (5)	Marsh Excavation (6)	Reduced Marsh in Fill Backfill (10)	Expanded Marsh Backfill (10)	Unexpanded Fill		Mass Ordinate +/- (14)	Waste	Borrow	Select Borrow	Comment:
			Cut (2)	EBS Excavation (3)						Factor	Factor					
CATEGORY 0010	120+80 to 139+16	Temporary Pavement Stage 1B (north end)	450	0	0	450	0	0	1.50	111	1.25	311	311	(Item #208.0100)	451.43	Temporary widening
	139+16 to 142+00	SE Entrance Ramp	1	0	0	1	0	0	0	39	39	-39	-39			
	139+16 to 142+00	SE Entrance Ramp	1	0	0	1	0	0	0	2,976	2,976	-2,976	-2,976			
	128+00 to 137+00	Temporary Pavement Stage 2 (north end)	1,338	0	1,338	0	0	0	0	5,793	7,197	-7,197	-7,197			
		PROJECT SUBTOTAL	1,769	0	1,338	451	0	0	0	36,830	46,535	-46,086	-46,086			

Addendum No. 1
 ID 5411-02-74
 Revised Sheet 223
 February 5, 2015

EARTHWORK SUMMARY CONT.

Division 2 TC - STAGE 2&3	From/To Station	Location	Common Excavation (1) 205.0100		Salvaged/ Unusable Pavement Material (4)	Available Material (5)	Marsh Excavation (6)	Reduced Marsh in Fill (8)	Expanded Marsh Backfill (10)		Unexpanded Fill	Expanded Fill (13)		Mass Ordinate +/- (14)	Waste	Borrow	Select Borrow	Comment:	
			Cut (2)	EBS Excavation (3)					Factor	Factor		Factor	Factor						
CATEGORY 0010	11+07.9810 to 13+02.97	US 51 SB Marlene (north end)	1,306	0	1,212	93	0	0.60	1.50	0	11,864	14,255	-14,411	-14,411	(Item #208.0100)	(Item #208.1000)		Temporary widening	
	12+59.27 to 13+47.5	Temporary Pavement Stage 3 (north end)	230	0	0	230	0	0	0	13	0	16	2.4	2.4					
		UNDISTRIBUTED	0	50	0	0	0	0	0	0	11,617	14,521	-14,198	-14,198					
		PROJECT SUBTOTAL	1,536	50	1,212	323	0	0	0	0	11,617	14,521	-14,198	-14,198					

Division 2 TC - STAGE 4	From/To Station	Location	Common Excavation (1) 205.0100		Salvaged/ Unusable Pavement Material (4)	Available Material (5)	Marsh Excavation (6)	Reduced Marsh in Fill (8)	Expanded Marsh Backfill (10)		Unexpanded Fill	Expanded Fill (13)		Mass Ordinate +/- (14)	Waste	Borrow	Select Borrow	Comment:	
			Cut (2)	EBS Excavation (3)					Factor	Factor		Factor	Factor						
CATEGORY 0010	12+59.27 to 13+47.5	US 51 SB Marlene (north end)	170	0	0	170	0	0.60	1.50	0	0	1,25	170	170	170				grading
		PROJECT SUBTOTAL	170	0	0	170	0	0	0	0	0	1,25	170	170	170				

Division 3 TC - STAGE 1 (CG1-CG3)	From/To Station	Location	Common Excavation (1) 205.0100		Salvaged/ Unusable Pavement Material (4)	Available Material (5)	Marsh Excavation (6)	Reduced Marsh in Fill (8)	Expanded Marsh Backfill (10)		Unexpanded Fill	Expanded Fill (13)		Mass Ordinate +/- (14)	Waste	Borrow	Select Borrow	Comment:	
			Cut (2)	EBS Excavation (3)					Factor	Factor		Factor	Factor						
CATEGORY 0010	10+06.00 to 24+06.38	Cottage Grove Road (EB)	1,752	0	1,224	528	0	0.60	1.50	172	0	216	312	312	(Item #208.0100)	(Item #208.1000)			
	10+03.00 to 24+03.98	Cottage Grove Road (WB)	1,601	0	1,400	201	0	0	0	140	0	175	26	26					
	23+00.00 to 27+00.00	Cottage Grove Road (WB Crossover)	150	0	0	150	0	0	0	0	0	0	150	150				Includes removal of temporary pavement structure.	
	23+00.00 to 27+00.00	Cottage Grove Road (EB Crossover)	127	0	0	127	0	0	0	0	0	0	127	127				Includes removal of temporary pavement structure.	
		UNDISTRIBUTED	0	100	0	0	0	0	0	0	0	0	0	0					
		PROJECT SUBTOTAL	3,720	100	2,624	1,006	0	0	0	0	0	391	615	615	0	0	0	0	
		GRAND TOTAL 54110274	88,852			33,066									87,264		45,143		

1) Common Excavation is the sum of the Cut and EBS Excavation columns. Item number 205.0100
 2) Salvaged/Unusable Pavement Material is included in Cut.
 3) EBS Excavation to be backfilled with Select Borrow material. Note: this is designers choice, can be backfilled with Borrow, or Cut as well.
 4) Salvaged/Unusable Pavement Material
 5) Available Material = Cut - Salvaged/Unusable Pavement Material
 6) Marsh Excavation - to be backfilled with Granular Backfill Material, 205.0100
 7) Reduced Marsh in Fill - Expanded Marsh material is usable in fills outside the 1:1 slope. Marsh in Fill Reduction factor = 0.6
 8) Expanded Marsh in Fill - Expanded Marsh material is usable in fills outside the 1:1 slope. Marsh in Fill Reduction factor = 1.5. Item number 205.11
 9) Expanded Fill Factor = 1.25
 10) Expanded Fill Factor = 1.25
 Depending on selections:
 Expanded Fill = (Unexpanded Fill - Rock* Rock Factor - Reduced EBS) * Fill Factor
 Or
 Expanded Fill = (Unexpanded Fill - Rock* Rock Factor - Reduced EBS) * Fill Factor
 Or
 Expanded Fill = (Unexpanded Fill - Rock* Rock Factor - Reduced Marsh) * Fill Factor
 Or
 Expanded Fill = (Unexpanded Fill - Rock* Rock Factor) * Fill Factor

Addendum No. 1
ID 5411-02-74
Revised Sheet 224
February 5, 2015

PROJECT NO: 5411-02-74	COUNTY: DANE	MISCELLANEOUS QUANTITIES	SHEET 224
HWY: USH 51		FILE NAME : F:\306\93\N0093080\CADD\Projects\Miscellaneous Quant\17\asn\loc\1\misc\Quantity Sheet Border.dgn	
PROJECT DATE : 5/20/2014		PLOT SCALE : 1:1200	
PLOT BY : JOE LANE		PROJECT NAME :	

BASE AGGREGATE DENSE			
CATEGORY	STATION	TO STATION	STAGE COMPLETED
			(305.0110) 3/4-INCH 1 1/4-INCH
			(305.0120) TON
0010	USH 51 S.B. MAINLINE	112+26 99+37	380 3,830
	USH 51 S.B. ENTRANCE RAMP	130+33 103A+75	800 170
	USH 51 S.B. EXIT RAMP	116A+16	2,430
	COTTAGE GROVE ROAD E.B.	113B+58 103B+66 116B+32	180 900 230
	COTTAGE GROVE ROAD W.B.	113B+58 121B+91 170GE+76	1,870 900 800
	COTTAGE GROVE ROAD W.B.	170GE+54 STAGING LIMITS	600
	COTTAGE GROVE ROAD W.B.	80CGW+64 16CGW+93	940 530
	MULTIUSE PATH	57BP+93	160
	CONCRETE DRAINAGE DITCH	57BP+47	70
	USH 51 S.B. TEMPORARY PAVEMENT (STAGE 1B)	107+00	1,110
	USH 51 S.B. TEMPORARY PAVEMENT (STAGE 2)	120+86	900
	USH 51 S.B. TEMPORARY PAVEMENT (STAGE 3)	99TC+06 123TC+50	3,280 2,390
	USH 51 S.B. TEMPORARY PAVEMENT (STAGE CG3)	137TC+18 108+50	1,710
	COTTAGE GROVE ROAD W.B. TEMPORARY PAVEMENT (STAGE CG2)	120+86 135TC+50	980
	UNDISTRIBUTED		29,930

2, 3, & 4
2, 3, & 4
1B & 3

CONCRETE PAVEMENT			
CATEGORY	STATION	TO STATION	STAGE COMPLETED
			(415.0090) 9-INCH SY
			(415.0100) 10-INCH SY
0010	USH 51 S.B. MAINLINE	111+62 100+37	0 0
	USH 51 S.B. ENTRANCE RAMP	128+50 103A+75	0 0
	USH 51 S.B. EXIT RAMP	116A+16	0
	COTTAGE GROVE ROAD E.B.	113B+39 103B+66 121B+94	0 0 0
	COTTAGE GROVE ROAD W.B.	103B+66 116B+32 170GE+76	2,385 2,145
	COTTAGE GROVE ROAD W.B.	24TCG+39	336
	COTTAGE GROVE ROAD W.B.	10CGW+22 17CGW+49	2,380 1,835
	PROJECT TOTALS		8,715
	PROJECT TOTALS		19,095

CONCRETE PAVEMENT GAPS

CATEGORY	LOCATION	(415.0210) EACH
0010	COTTAGE GROVE ROAD W.B. AND COTTAGE COURT INTERSECTION UNDISTRIBUTED	1
	PROJECT TOTAL	2

CONCRETE MEDIAN SLOPED NOSE

CATEGORY	STATION	LOCATION	(620.0300) SF
0010	USH 51 S.B. EXIT RAMP	103B+90 RT	50
	COTTAGE GROVE ROAD	107GE+55 LT	115
	PROJECT TOTAL		165

CONCRETE PAVEMENT APPROACH SLAB

CATEGORY	STATION	TO STATION	(415.0410) SY
0010	USH 51 S.B. MAINLINE	111+62 116+17	174 118
	USH 51 S.B. EXIT RAMP	113B+39	61
	PROJECT TOTAL		411

Addendum No. 1
ID 5411-02-74
Revised Sheet 225
February 5, 2015

SELECT CRUSHED MATERIAL

CATEGORY	STATION	TO STATION	(312.0110) TON	STAGE COMPLETED
0010	USH 51 S.B. MAINLINE	112+26 99+37	4,610 5,300	2, 3, & 4 2, 3, & 4
	USH 51 S.B. ENTRANCE RAMP	130+33 103A+75	2,600	1B & 3
	USH 51 S.B. EXIT RAMP	113B+58 103B+66 121B+91	2,340 1,340	1B & 3 1B & 3
	USH 51 S.B. TEMPORARY PAVEMENT (STAGE 2)	113TC+35 99TC+36	1,450 1,290	1B
	USH 51 S.B. TEMPORARY PAVEMENT (STAGE 3)	130+32 STAGING LIMITS	1,070	2
	FRENCH DRAINS	130+32 STAGING LIMITS	40	-
	UNDISTRIBUTED (FOR EBS)		1,000	-
	PROJECT TOTAL		21,110	

2, 3, & 4
2, 3, & 4

DRILLED TIE BARS

CATEGORY	STATION	TO STATION	LOCATION	(416.0610) EACH
0010	COTTAGE GROVE ROAD E.B.	107GE+21 150GE+32	ON LINE	75 64
	COTTAGE GROVE ROAD W.B.	180GE+08 10CGW+22	ON LINE	210 107
	PROJECT TOTAL			768

DRILLED DOWEL BARS

CATEGORY	STATION	TO STATION	LOCATION	(416.0620) EACH
0010	COTTAGE GROVE ROAD E.B.	120GE+44 150GE+32	RT	2 2
	COTTAGE GROVE ROAD W.B.	130CGW+43 140CGW+19	LT	2 2
	PROJECT TOTAL			8

Addendum No. 1
ID 5411-02-74
Revised Sheet 228
February 5, 2015

CURB RAMP DETECTABLE WARNING FIELD NATURAL PATINA											
CATEGORY	STATION	TO STATION	LOCATION	SPV 0090.01 SPECIAL 24-INCH TYPE A	SPV 0090.02 SPECIAL 24-INCH TYPE D	SPV 0090.03 CONCRETE CURB INTEGRAL SPECIAL 12-INCH TYPE D	(601.0409) 30-INCH TYPE A	(601.0411) 30-INCH TYPE D	(601.0474) 4-INCH SLOPED 30-INCH TYPE G	(601.0576) 4-INCH SLOPED 30-INCH TYPE J	(602.0515) CONSTRUCTION STAKING CURB & GUTTER AND CURB & GUTTER
				LF	LF	LF	LF	LF	LF	LF	SF
0010	USH 51 S.B. MAINLINE	104A+50	LT	-	-	-	-	415	100	-	515
		111+60	RT	-	-	-	50	-	-	-	50
	USH 51 S.B. ENTRANCE RAMP	111A+99	RT	-	-	-	-	-	-	-	8
		115A+96	RT	-	-	-	430	-	-	-	8
	USH 51 S.B. EXIT RAMP	104B+33	LT	-	-	-	115	-	-	-	8
		103B+86	RT	-	-	-	430	-	-	-	8
		103B+90	RT	-	-	-	810	-	-	-	8
		111B+71	RT	-	-	-	-	-	-	-	8
	COTTAGE GROVE ROAD E.B.	130GE+55	LT	275	-	-	-	-	-	-	275
		12CGE+44	RT	-	-	-	185	-	-	-	330
		14CGE+08	LT	320	10	-	-	-	-	-	70
		17CGE+01	RT	-	-	70	-	-	-	-	480
		17CGE+68	LT	440	-	-	-	-	-	-	390
		22CGE+36	LT	-	-	-	160	230	-	-	270
		22CGE+68	LT	-	-	-	-	-	-	-	30
		13CGW+46	RT	270	-	-	30	-	-	-	36
		13CGW+48	RT	-	-	-	35	-	-	-	305
		14CGW+86	LT	-	-	-	-	-	-	-	495
		14CGW+86	LT	-	-	-	-	-	-	-	395
		17CGW+04	RT	255	50	-	-	-	-	-	245
		17CGW+40	RT	485	10	-	150	245	-	-	245
		22CGW+87	RT	-	-	-	-	-	-	-	245
	MULTI-USE PATH	51BP+35	ON LINE	-	-	-	-	-	-	-	5,855
	PROJECT TOTALS			2,045	110	70	2,395	720	415	100	

CONCRETE CURB & GUTTER											
CATEGORY	STATION	TO STATION	LOCATION	(602.0410) 5-INCH SF	(602.0420) 7-INCH SF	(603.0500) CONCRETE CURB INTEGRAL SPECIAL 12-INCH TYPE D	(601.0409) 30-INCH TYPE A	(601.0411) 30-INCH TYPE D	(601.0474) 4-INCH SLOPED 30-INCH TYPE G	(601.0576) 4-INCH SLOPED 30-INCH TYPE J	(602.0515) CONSTRUCTION STAKING CURB & GUTTER AND CURB & GUTTER
				LF	LF	LF	LF	LF	LF	LF	SF
0010	USH 51 S.B. EXIT RAMP	107B+84	RT (MEDIAN)	2,010	-	-	-	-	-	-	-
		104B+29	LT (ISLAND)	630	-	-	-	-	-	-	-
	COTTAGE GROVE ROAD E.B.	10CGE+55	RT	805	-	-	-	-	-	-	-
		13CGE+10	RT	290	-	-	-	-	-	-	-
		14CGE+10	LT (MEDIAN)	130	-	-	-	-	-	-	-
		15CGE+05	RT	135	-	-	-	-	-	-	-
		18CGE+22	RT	-	50	-	-	-	-	-	-
	COTTAGE GROVE ROAD W.B.	13CGW+28	LT	130	-	-	-	-	-	-	-
		13CGW+90	LT	260	-	-	-	-	-	-	-
		17CGW+75	LT	230	170	-	-	-	-	-	-
		18CGW+01	RT (MEDIAN)	-	400	-	-	-	-	-	-
	PROJECT TOTALS			4,620	620						

CONCRETE BARRIER WALL TYPE S42											
CATEGORY	STATION	TO STATION	LOCATION	(603.2142) CONCRETE BARRIER FIXED OBJECT PROJECTION TYPE S42	(603.3513) CONCRETE BARRIER TRANSITION TYPE S32 TO S36	(603.3535) CONCRETE BARRIER TRANSITION TYPE S36 TO S42	(603.0500) DELINEATOR REFLECTORS BRACKETS	(603.1000) DELINEATOR CONSTRUCTION STAKING CONCRETE BARRIER	(603.7500) CONCRETE BARRIER	(614.0905) CRASH CUSHIONS PERMANENT TEMPORARY	(614.0905) CRASH CUSHIONS TEMPORARY
				LF	LF	LF	EA	EA	EA	EA	EA
0010	USH 51 S.B. MAINLINE	118+37	LT	-	1	-	-	-	-	-	-
		118+48	LT	-	-	1	-	-	-	-	-
		118+48	LT	420	-	-	-	-	-	-	-
		120+68	LT	-	-	4	4	4	420	-	-
		120+83	LT	-	-	-	-	-	-	-	-
		120+83	LT	15	-	-	-	-	-	-	-
	USH 51 S.B. EXIT RAMP	116B+30	RT	-	1	-	-	-	-	-	-
		116B+40	RT	-	-	-	-	-	-	-	-
		116B+51	RT	-	1	-	-	-	-	-	-
		116B+51	RT	419	-	4	4	4	419	-	-
		120B+69	RT	-	-	-	-	-	-	-	-
	PROJECT TOTALS			839	2	2	8	8	839		

MISCELLANEOUS QUANTITIES											
CATEGORY	STATION	TO STATION	LOCATION	(614.2300) MGS GUARDRAIL 3	(614.2300) MGS GUARDRAIL 3	(614.2300) MGS GUARDRAIL 3	(614.2300) MGS GUARDRAIL 3	(614.2300) MGS GUARDRAIL 3	(614.2300) MGS GUARDRAIL 3	(614.2300) MGS GUARDRAIL 3	(614.2300) MGS GUARDRAIL 3
				LF	LF	LF	LF	LF	LF	LF	LF
0010	USH 51 S.B. MAINLINE	106B+82	RT	187.5	-	-	-	-	-	-	-
		116+15	RT	950.0	-	-	-	-	-	-	-
		116+15	RT	39.4	-	-	-	-	-	-	-
		106A+100	LT	450.0	-	-	-	-	-	-	-
		106A+100	LT	-	150.0	-	-	-	-	-	-
	USH 51 S.B. EXIT RAMP	106A+50	LT	-	-	-	-	-	-	-	-
		107B+50	LT	512.5	-	-	-	-	-	-	-
		111B+74	RT	125.0	-	-	-	-	-	-	-
		117B+60	LT	537.5	-	-	-	-	-	-	-
	PROJECT TOTALS			3,062.5	150.0	197.0	4	4	3		

FINISHING ITEMS

CATEGORY	STATION	TO STATION	LOCATION	(625.0100) TOPSOIL SY	(627.0200) MULCHING SY	(620.0210) FERTILIZER TYPE B CWT	(630.0130) SEEDING MIXTURE NO. 30 LB	(630.0140) SEEDING MIXTURE NO. 40 LB	(630.0160) SEEDING MIXTURE NO. 60 LB	(630.0170) SEEDING MIXTURE NO. 70 LB	(630.0175) SEEDING MIXTURE NO. 75 LB	(630.0180) SEEDING MIXTURE NO. 80 LB	(630.0200) SEEDING TEMPORARY CLASS 1 TYPE A SY	(638.0002) EROSION MAT CLASS 1 TYPE A SY	(638.0006) EROSION MAT URBAN CLASS 1 TYPE A SY	
																(625.0500) SALVAGED TOPSOIL SY
0010	USH 51 S.B. MAINLINE															
		112A+00		RT	2,405	-	2.28	65	-	-	-	-	-	2,405	-	-
		STAGINGS LIMITS	103A+75	LT	294	-	0.18	5	-	-	-	-	-	294	-	-
		STAGINGS LIMITS	113A+00	LT	6,579	2,615	5.09	-	-	-	25	-	-	3,964	-	-
		105A+25		RT	2,800	-	2.60	74	-	-	-	-	-	2,800	-	-
		STAGINGS LIMITS	115A+40	RT	2,800	-	2.60	-	-	-	-	-	-	2,800	-	-
		STAGINGS LIMITS	121B+01	LT	2,146	-	2.43	-	-	-	1	-	-	2,146	-	-
		USH 51 S.B. ENTRANCE RAMP	116A+15	LT	6,470	6,552	8.11	-	1	87	23	25	17	5,735	-	-
		USH 51 S.B. EXIT RAMP	104B+30	LT	4,064	661	2.69	-	-	-	-	12	11	3,403	-	-
		117B+00		LT	2,575	-	1.79	-	-	-	-	-	7	2,575	-	-
COTTAGE GROVE ROAD E.B.																
	120GE+00		LT	113	-	0.07	-	2	-	-	-	-	-	113	-	-
	110GE+75		RT	85	-	0.05	-	2	-	-	-	-	-	85	-	-
	140GE+23		LT	773	-	0.49	-	14	-	-	-	-	-	773	-	-
	140GE+82		RT	191	-	0.12	-	3	-	-	-	-	-	191	-	-
	230GE+21		LT	1,224	-	0.77	-	22	-	-	-	-	-	1,224	-	-
	220GE+92		LT	1,465	-	0.92	-	26	-	-	-	-	-	1,465	-	-
COTTAGE GROVE ROAD W.B.																
	130GW+13		LT	62	-	0.03	-	1	-	-	-	-	-	62	-	-
	130GW+88		LT	167	-	0.11	-	3	-	-	-	-	-	167	-	-
	160GW+95		LT	574	-	0.36	-	10	-	-	-	-	-	574	-	-
	230GW+03		LT	113	-	0.07	-	2	-	-	-	-	-	113	-	-
	230GW+25		LT	113	-	0.07	-	2	-	-	-	-	-	113	-	-
MULT-USE PATH																
	54BP+47		LT	543	543	0.34	-	10	-	-	-	-	-	543	-	-
	54BP+83		RT	1,378	679	0.99	-	12	-	-	5	-	-	889	-	-
USH 51 S.B. STAGE 1B																
	107A+00		RT	824	-	-	-	-	-	-	-	22	824	-	-	
USH 51 S.B. STAGE 2																
	120+80		RT	1,837	-	-	-	-	-	-	-	50	1,837	-	-	
USH 51 S.B. STAGE 3																
	108TC+00		LT	703	-	-	-	-	-	-	-	19	703	-	-	
	110TC+50		LT	1,284	-	-	-	-	-	-	-	35	1,284	-	-	
	108TC+65		RT	753	-	-	-	-	-	-	-	20	753	-	-	
	123TC+50		LT	727	-	-	-	-	-	-	-	20	727	-	-	
USH 51 S.B. STAGE 3																
	108A+50		RT	932	-	-	-	-	-	-	-	25	932	-	-	
	125A+25		RT	1,320	2,750	7.49	36	27	23	7	25	25	36	1,320	-	
	STAGINGS LIMITS		RT	10,849	13,800	37.00	180	135	110	30	110	115	63	7,389	-	
UNDISTRIBUTED				5,900	48,683								290	40,000		1,151
PROJECT TOTALS				5,900	13,800	37.00	180	135	110	30	110	115	290	40,000		5,900

SALVAGED HYDRIC SOIL

CATEGORY	STATION	TO STATION	LOCATION	(SPV.0180.01) SY
0010	USH 51 S.B. ENTRANCE RAMP			
	106A+50		LT	5817
PROJECT TOTAL				5817

Addendum No. 1
 ID 5411-02-74
 Revised Sheet 231
 February 5, 2015

Addendum No. 1
ID 5411-02-75
Revised Sheet 248
February 5, 2015

SANITARY SEWER STRUCTURES

CATEGORY	STRUCTURE NUMBER	LOCATION (UPSTREAM)	STATION	LOCATION (OFFSET)	FINAL RIM	TEMP RIMELEV.	EXISTING EXISTING	NET ADJUST	DEPTH	(SPV.0060.0) SANITARY SEWER ACCESS STRUCTURE, 5-FOOT DIAMETER EACH	(SPV.0060.09) SANITARY SEWER ACCESS STRUCTURE, 4-FOOT DIAMETER EACH	(SPV.0060.02) MANHOLE COVER TYPE SPECIAL LOGO EACH	(SPV.0060.12) SANITARY SEWER TAP EACH	(SPV.0060.21) SANITARY FORCE MAIN CONNECTION EACH
COTTAGE GROVE ROAD														
0010	SAS91	8CGE+88.70	LT-9.30	866.25	-	-	-	-	854.72	1	-	1	-	-
	SAS92	9CGE+03.50	LT-10.00	866.30	-	-	-	-	854.83	1	-	1	-	-
	SAS93	9CGE+03.30	LT-17.80	866.19	-	-	-	-	857.09	1	-	1	-	-
	SAS94	12CGE+78.00	LT-12.00	867.95	-	-	-	-	856.96	1	-	1	-	-
	SAS95	16CGE+45.00	LT-18.00	873.11	-	-	-	-	860.39	1	-	1	-	-
	SAS96	18CGE+70.00	LT-18.00	875.50	-	-	-	-	862.38	1	-	1	-	-
	SAS97	21CGE+20.00	LT-18.00	873.86	-	-	-	-	862.90	1	-	1	-	-
	SAS98	23CGE+70.00	LT-18.00	873.07	-	-	-	-	863.42	1	-	1	-	-
	SAS99	24CGE+13.80	RT-27.30	873.60	-	-	-	-	863.64	1	-	1	-	-
PROJECT TOTALS										6	1	9	6	1

ADDITIONAL QUANTITIES FOUND ELSEWHERE

SANITARY SEWER PIPES (SEWER MAIN)

CATEGORY	LOCATION (DOWNSTREAM)	LOCATION (UPSTREAM)	EI (DOWNSTREAM)	EI (UPSTREAM)	SLOPE (%)	FOR SANITARY SEWER	SEWER PIPE 8 INCH LF	SEWER PIPE PVC, 2 INCH LF	SEWER PIPE PVC, 2 INCH LF	(SPV.0090.09) SANITARY BORE AND JACK	(SPV.0090.14) SANITARY BORE AND JACK	(SPV.0090.18) SANITARY COMPRESSION COUPLING EACH	(SPV.0090.19) ELECTRONIC MARKERS EACH	(SPV.0090.11) SANITARY SEWER LATERAL LF	NOTES
COTTAGE GROVE ROAD															
0010	SAS91	854.75	854.83	0.50%	16	-	-	16	-	-	-	-	-	-	-
	SAS92	856.60	857.09	0.13%	8	-	-	8	-	-	-	-	-	-	-
	SAS93	854.93	856.96	0.54%	375	-	-	375	-	-	-	-	-	-	-
	SAS94	857.06	860.39	0.91%	366	-	-	366	-	-	-	-	-	-	-
	SAS95	860.49	862.38	0.84%	225	-	-	225	-	-	-	-	-	-	-
	SAS96	862.40	862.90	0.20%	250	-	-	250	-	-	-	-	-	-	-
	SAS97	862.92	863.42	0.20%	250	-	-	250	-	-	-	-	-	-	-
	SAS98	863.52	863.64	0.20%	61	-	-	61	-	-	-	-	-	-	-
	SAS99	868.18	868.18	2.95%	38	-	-	38	-	-	-	-	-	-	-
	EX SAS 6546-005	857.06	-	-	-	-	-	-	-	-	-	-	-	-	INSTALL COMPRESSION TO PIPE NORTH OF SAS 6546-005
	LATERAL-UNDISTRIBUTED	-	-	-	35	-	-	-	-	-	-	-	-	35	UNDISTRIBUTED NO LATERALS EXPECTED
PROJECT TOTALS										46	1	1	35		

REMOVE SEWER ACCESS STRUCTURES

CATEGORY	EXIST. STRUCTURE NUMBER	STATION	LOCATION (OFFSET)	RIM	EI	DEPTH	(SPV.0060.15) REMOVE SANITARY SEWER STRUCTURE EACH	(SPV.0060.16) ABANDON SEWER ACCESS STRUCTURES EACH	NOTES
COTTAGE GROVE ROAD									
0010	6546-004	8CGE+88.70	LT-9.30	866.25	854.72	11.53	1	-	-
	6546-003	9CGE+03.30	LT-17.80	866.19	856.54	9.65	1	-	BLOCK MANHOLE STRUCTURE
	6546-005	12CGW+76.40	RT-26.70	867.73	857.56	10.17	1	-	BLOCK MANHOLE STRUCTURE
	6546-006	13CGW+03.38	RT-26.50	868.08	857.82	10.26	1	-	BLOCK MANHOLE STRUCTURE
	6546-007	126CGW+44.50	RT-24.20	873.00	858.98	14.02	1	-	-
	6546-008	17CGW+63.10	RT-23.80	875.20	862.13	13.07	1	-	-
	6646-002	20CGW+12.50	RT-23.00	874.17	863.15	11.02	1	-	BLOCK MANHOLE STRUCTURE
	6646-001	24CGW+13.60	RT-27.30	873.60	863.94	9.66	1	-	-
PROJECT TOTALS								4	4

SCHEDULE OF ITEMS

REVISED:

CONTRACT:
20150210007PROJECT(S):
5411-02-74
5411-02-75FEDERAL ID(S):
WISC 2014433
N/A

CONTRACTOR : _____

LINE NO	ITEM DESCRIPTION	APPROX. QUANTITY AND UNITS	UNIT PRICE		BID AMOUNT	
			DOLLARS	CTS	DOLLARS	CTS
0300	204.9105.S Removing (item description) 02. Traffic Signal Equipment (Ush 51 Nb & Cottage Grove Road)	LUMP	LUMP			.
0310	204.9165.S Removing (item description) 01. Modular Block Retaining Wall	SF	440.000			.
0320	204.9165.S Removing (item description) 02. Concrete Masonry Wall	SF	320.000			.
0330	204.9180.S Removing (item description) 01. Concrete Slope Paving Waterway	SY	615.000			.
0340	205.0100 Excavation Common	CY	88,852.000			.
0350	205.0400 Excavation Marsh	CY	33,096.000			.
0360	206.1000 Excavation for Structures Bridges (structure) 01. B-13-632	LUMP	LUMP			.
0370	206.1000 Excavation for Structures Bridges (structure) 02. B-13-660	LUMP	LUMP			.
0380	206.2000 Excavation for Structures Culverts (structure) 01. C-13-2075	LUMP	LUMP			.

SCHEDULE OF ITEMS

REVISED:

CONTRACT:
20150210007PROJECT(S):
5411-02-74
5411-02-75FEDERAL ID(S):
WISC 2014433
N/A

CONTRACTOR : _____

LINE NO	ITEM DESCRIPTION	APPROX. QUANTITY AND UNITS	UNIT PRICE		BID AMOUNT	
			DOLLARS	CTS	DOLLARS	CTS
0390	206.3000 Excavation for Structures Retaining Walls (structure) 01. R-13-228	LUMP	LUMP			.
0400	206.3000 Excavation for Structures Retaining Walls (structure) 02. R-13-229	LUMP	LUMP			.
0410	208.0100 Borrow	87,264.000 CY	.		.	.
0420	208.1100 Select Borrow	45,143.000 CY	.		.	.
0430	210.0100 Backfill Structure	1,100.000 CY	.		.	.
0440	213.0100 Finishing Roadway (project) 01. 5411-02-74	1.000 EACH	.		.	.
0450	305.0110 Base Aggregate Dense 3/4-Inch	1,850.000 TON	.		.	.
0460	305.0120 Base Aggregate Dense 1 1/4-Inch	30,377.000 TON	.		.	.
0470	311.0115 Breaker Run	86.000 CY	.		.	.
0480	312.0110 Select Crushed Material	21,110.000 TON	.		.	.

SCHEDULE OF ITEMS

REVISED:

CONTRACT:
20150210007PROJECT(S):
5411-02-74
5411-02-75FEDERAL ID(S):
WISC 2014433
N/A

CONTRACTOR : _____

LINE NO	ITEM DESCRIPTION	APPROX. QUANTITY AND UNITS	UNIT PRICE		BID AMOUNT	
			DOLLARS	CTS	DOLLARS	CTS
1100	550.1100 Piling Steel HP 10-Inch X 42 Lb	3,960.000 LF	.		.	
1110	550.1120 Piling Steel HP 12-Inch X 53 Lb	3,355.000 LF	.		.	
1120	601.0409 Concrete Curb & Gutter 30-Inch Type A	2,395.000 LF	.		.	
1130	601.0411 Concrete Curb & Gutter 30-Inch Type D	720.000 LF	.		.	
1140	601.0574 Concrete Curb & Gutter 4-Inch Sloped 30-Inch Type G	415.000 LF	.		.	
1150	601.0576 Concrete Curb & Gutter 4-Inch Sloped 30-Inch Type J	100.000 LF	.		.	
1160	602.0410 Concrete Sidewalk 5-Inch	4,620.000 SF	.		.	
1170	602.0420 Concrete Sidewalk 7-Inch	620.000 SF	.		.	
1180	602.0515 Curb Ramp Detectable Warning Field Natural Patina	192.000 SF	.		.	
1190	603.1142 Concrete Barrier Type S42	839.000 LF	.		.	

SCHEDULE OF ITEMS

REVISED:

CONTRACT:
20150210007PROJECT(S):
5411-02-74
5411-02-75FEDERAL ID(S):
WISC 2014433
N/A

CONTRACTOR : _____

LINE NO	ITEM DESCRIPTION	APPROX. QUANTITY AND UNITS	UNIT PRICE		BID AMOUNT	
			DOLLARS	CTS	DOLLARS	CTS
1610	618.0100 Maintenance And Repair of Haul Roads (project) 01. 5411-02-74	1.000 EACH	.		.	
1620	619.1000 Mobilization	1.000 EACH	.		.	
1630	620.0300 Concrete Median Sloped Nose	165.000 SF	.		.	
1640	624.0100 Water	500.000 MGAL	.		.	
1650	625.0100 Topsoil	5,900.000 SY	.		.	
1660	625.0500 Salvaged Topsoil	48,683.000 SY	.		.	
1670	627.0200 Mulching	13,800.000 SY	.		.	
1680	628.1504 Silt Fence	7,500.000 LF	.		.	
1690	628.1520 Silt Fence Maintenance	15,000.000 LF	.		.	
1700	628.1905 Mobilizations Erosion Control	30.000 EACH	.		.	

SCHEDULE OF ITEMS

REVISED:

CONTRACT:
20150210007PROJECT(S):
5411-02-74
5411-02-75FEDERAL ID(S):
WISC 2014433
N/A

CONTRACTOR : _____

LINE NO	ITEM DESCRIPTION	APPROX. QUANTITY AND UNITS	UNIT PRICE		BID AMOUNT	
			DOLLARS	CTS	DOLLARS	CTS
2550	650.6500 Construction Staking Structure Layout (structure) 05. C-13-2075	LUMP	LUMP			.
2560	650.7000 Construction Staking Concrete Pavement	7,931.000 LF	.			.
2570	650.7500 Construction Staking Concrete Barrier	839.000 LF	.			.
2580	650.8500 Construction Staking Electrical Installations (project) 01. 5411-02-74	LUMP	LUMP			.
2590	650.9910 Construction Staking Supplemental Control (project) 01. 5411-02-74	LUMP	LUMP			.
2600	650.9920 Construction Staking Slope Stakes	5,556.000 LF	.			.
2610	652.0125 Conduit Rigid Metallic 2-Inch	44.000 LF	.			.
2620	652.0225 Conduit Rigid Nonmetallic Schedule 40 2-Inch	5,214.000 LF	.			.
2630	652.0235 Conduit Rigid Nonmetallic Schedule 40 3-Inch	2,785.000 LF	.			.
2640	652.0310 Conduit Rigid Nonmetallic Schedule 80 1-Inch	8.000 LF	.			.

SCHEDULE OF ITEMS

REVISED:

CONTRACT:
20150210007PROJECT(S):
5411-02-74
5411-02-75FEDERAL ID(S):
WISC 2014433
N/A

CONTRACTOR : _____

LINE NO	ITEM DESCRIPTION	APPROX. QUANTITY AND UNITS	UNIT PRICE		BID AMOUNT	
			DOLLARS	CTS	DOLLARS	CTS
3450	SPV.0060 Special 05. Salvage & Reinstall Traffic Equipment	8.000 EACH	.		.	
3460	SPV.0060 Special 06. Abandon Concrete Base	1.000 EACH	.		.	
3470	SPV.0060 Special 07. Cleaning And Painting Bearings	40.000 EACH	.		.	
3480	SPV.0060 Special 08. Adjust Water Valve Box	4.000 EACH	.		.	
3490	SPV.0060 Special 09. Sanitary Sewer Access Structure, 4-Foot Diameter	1.000 EACH	.		.	
3500	SPV.0060 Special 10. Sanitary Sewer Access Structure, 5-Foot Diameter	8.000 EACH	.		.	
3510	SPV.0060 Special 11. Adjust Sas Special	1.000 EACH	.		.	
3520	SPV.0060 Special 12. Sanitary Sewer Tap	6.000 EACH	.		.	
3530	SPV.0060 Special 13. Sewer Electronic Markers	1.000 EACH	.		.	
3540	SPV.0060 Special 14. Sanitary Lateral Reconnect	1.000 EACH	.		.	

SCHEDULE OF ITEMS

REVISED:

CONTRACT:
20150210007PROJECT(S):
5411-02-74
5411-02-75FEDERAL ID(S):
WISC 2014433
N/A

CONTRACTOR : _____

LINE NO	ITEM DESCRIPTION	APPROX. QUANTITY AND UNITS	UNIT PRICE		BID AMOUNT	
			DOLLARS	CTS	DOLLARS	CTS
3550	SPV.0060 Special 15. Remove Sanitary Sewer Structure	4.000 EACH	.		.	
3560	SPV.0060 Special 16. Abandon Sewer Access Structures	4.000 EACH	.		.	
3570	SPV.0060 Special 17. Abandon Sanitary Sewer - Pipe Plug	4.000 EACH	.		.	
3580	SPV.0060 Special 18. Temporary Sanitary Sewer Connection	2.000 EACH	.		.	
3590	SPV.0060 Special 19. Install Compression Coupling	1.000 EACH	.		.	
3600	SPV.0060 Special 20. Pipe Supports	1.000 EACH	.		.	
3610	SPV.0060 Special 21. Sanitary Force Main Connection	1.000 EACH	.		.	
3620	SPV.0060 Special 22. 4x4x4-Inch Flush Mounted Junction Box	4.000 EACH	.		.	
3630	SPV.0060 Special 23. Settlement Gauges	5.000 EACH	.		.	
3640	SPV.0060 Special 24. Vibrating Wire Piezometer Instrumentation System	6.000 EACH	.		.	

SCHEDULE OF ITEMS

REVISED:

CONTRACT:
20150210007PROJECT(S):
5411-02-74
5411-02-75FEDERAL ID(S):
WISC 2014433
N/A

CONTRACTOR : _____

LINE NO	ITEM DESCRIPTION	APPROX. QUANTITY AND UNITS	UNIT PRICE		BID AMOUNT	
			DOLLARS	CTS	DOLLARS	CTS
3930	SPV.0105 Special 13. Geotechnical Instrumentation	LUMP	LUMP			.
3940	SPV.0165 Special 01. Deck Surface Patching	SF	250.000	.		.
3950	SPV.0165 Special 02. Concrete Surface Repair Special	SF	900.000	.		.
3960	SPV.0165 Special 03. Fiber Wrap Pier Reinforcing	SF	1,050.000	.		.
3970	SPV.0165 Special 04. Under Deck Spall Repair	SF	15.000	.		.
3980	SPV.0165 Special 05. Wall Concrete Panel Mechanically Stabilized Earth Lrfd/Qmp	SF	11,643.000	.		.
3990	SPV.0165 Special 06. Wall Wire Faced Mechanically Stabilized Earth Lrfd/Qmp	SF	1,572.000	.		.
4000	SPV.0180 Special 01. Slope Paving Concrete Waterway Special	SY	220.000	.		.
4010	603.3513 Concrete Barrier Transition Type S32 to S36	EACH	2.000	.		.
4020	603.3535 Concrete Barrier Transition Type S36 to S42	EACH	2.000	.		.

SCHEDULE OF ITEMS

REVISED:

CONTRACT:
20150210007

PROJECT(S):
5411-02-74
5411-02-75

FEDERAL ID(S):
WISC 2014433
N/A

CONTRACTOR : _____

LINE NO	ITEM DESCRIPTION	APPROX. QUANTITY AND UNITS	UNIT PRICE		BID AMOUNT	
			DOLLARS	CTS	DOLLARS	CTS
4030	SPV.0180 Special 02. Salvaged Hydric Soil	5,817.000 SY	.		.	
	SECTION 0001 TOTAL				.	
	TOTAL BID				.	