



Wisconsin Department of Transportation

February 6, 2015

Division of Transportation Systems Development

Bureau of Project Development
4802 Sheboygan Avenue, Rm 601
P O Box 7916
Madison, WI 53707-7916

Telephone: (608) 266-1631
Facsimile (FAX): (608) 266-8459

NOTICE TO ALL CONTRACTORS:

Proposal #13: 2265-16-70, WISC 2015 006
27th Street, City of Franklin/Oak Creek
W Drexel Ave to College Ave (CTH ZZ)
STH 241
Milwaukee County

Letting of February 10, 2015

This is Addendum No. 2, which provides for the following:

Plan Sheets

Revised Plan Sheets	
Plan Sheet	Plan Sheet Title (brief description of changes to sheet)
3	Remove a note from the general notes page.
51	Add a detail for Removing Storm Sewer items.

Plan Sheets

The following 8½ x 11-inch sheets are attached and made part of the plans for this proposal:
Revised: 3 and 51

The responsibility for notifying potential subcontractors and suppliers of these changes remains with the prime contractor.

Sincerely,

Mike Coleman

Proposal Development Specialist
Proposal Management Section

END OF ADDENDUM

THE LOCATIONS OF EXISTING AND PROPOSED UTILITY INSTALLATIONS AS SHOWN ON THE PLANS ARE APPROXIMATE. THERE MAY BE OTHER UTILITY INSTALLATIONS WITHIN THE PROJECT AREA THAT ARE NOT SHOWN.

NO TREES OR SHRUBS ARE TO BE REMOVED WITHOUT APPROVAL OF THE ENGINEER. ELEVATIONS SHOWN FOR CURB AND GUTTER ARE FLANGE ELEVATION. DISTANCES SHOWN FOR CURB AND GUTTER RADII ARE MEASURED TO THE FLANGE (UNLESS OTHERWISE SHOWN OR NOTED).

SUBSURFACE EXPLORATION REPORTS ARE AVAILABLE FOR REVIEW. CONTACT PROJECT MANAGER, TOM LAZCANO, AT THE WISCONSIN DEPARTMENT OF TRANSPORTATION, SE REGION, PHONE NUMBER (262) 574-5437. BORROW SITES SELECTED BY THE CONTRACTOR ARE SUBJECT TO APPROVAL BY THE WISCONSIN DEPARTMENT OF TRANSPORTATION - BUREAU OF ENVIRONMENT AND THE STATE HISTORIC PRESERVATION OFFICER.

EROSION CONTROL DEVICES ARE TO BE PLACED IN SEQUENCE WITH CONSTRUCTION STAGING AND MAINTAINED THROUGH EACH STAGE OR AS DETERMINED BY THE ENGINEER.

PROTECT ALL SLOPES 3:1 OR STEEPER WITH EROSION MAT AFTER SEEDING AND FERTILIZING. THE CONTRACTOR SHALL GIVE THE PROJECT ENGINEER AT LEAST TWO WEEKS NOTICE PRIOR TO ANY CONSTRUCTION ACTIVITIES THAT MAY DISTURB ANY PUBLIC SURVEY MONUMENTS.

LANDMARK REFERENCE MONUMENTS WILL BE INSTALLED BY SEWRPC. CONTRACTOR SHALL CALL JOHN WASHBURN AT (262) 547-6721, AT LEAST TWO WEEKS PRIOR TO WORK NEAR ANY PUBLIC SURVEY MONUMENT.

STATIONING, DISTANCES, AND OFFSETS FOR SIGNS ARE APPROXIMATE AND THE EXACT LOCATIONS OF SIGNS ARE TO BE DETERMINED IN THE FIELD BY THE ENGINEER.

IMMEDIATELY AFTER CONSTRUCTION OF ANY INLET, CONTRACTOR SHALL INSTALL THE INLET PROTECTION TO MINIMIZE SEDIMENTATION IN THE INLET AND STORM SEWER.

PRIOR TO ORDERING DRAINAGE PIPES AND STRUCTURES, THE CONTRACTOR SHALL VERIFY RELATED DRAINAGE INFORMATION IN THE PLAN WITH THE ENGINEER.

EXISTING DRIVEWAYS AND FIELD ENTRANCES SHALL BE RESTORED IN KIND AS DIRECTED BY THE ENGINEER IN THE FIELD AND AT THE LOCATION DETERMINED BY THE ENGINEER.

TEMPORARY STORAGE OF ANY EXCAVATED MATERIAL WILL NOT BE PERMITTED IN WETLANDS.

TRAFFIC CONTROL DEVICES SHALL BE ADJUSTED TO FIT FIELD CONDITIONS AS DIRECTED BY THE ENGINEER.

TINING ON CONCRETE PAVEMENT SHALL BE LONGITUDINAL.

EXPANSION JOINTS SHALL BE CONSTRUCTED AT ALL RADIUS POINTS IN CURB AND GUTTER.

ANY MESH OR REINFORCEMENT FOUND DURING REMOVAL OF THE PAVEMENT SHALL BE CONSIDERED INCIDENTAL TO THE ITEM -REMOVING PAVEMENT-

THE REMOVAL OF CONCRETE DRIVEWAYS AND CONCRETE MEDIANS WILL BE MEASURED AND PAID FOR IN ACCORDANCE WITH THE ITEM OF REMOVING CONCRETE SIDEWALK.

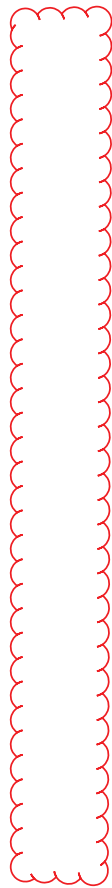
FINAL ADJUSTMENT OF SANITARY SEWER MANHOLE, FIRE HYDRANTS, AND WATER VALVE MANHOLE TO FIT THE CONTOUR OF THE NEW PAVEMENT SHALL BE DONE BY THE CITIES OF MILWAUKEE, GREENFIELD, FRANKLIN, OR OAK CREEK AND WILL BE COORDINATED WITH THE RESPECTIVE PUBLIC WORKS DIRECTORS.

FINISHING ROADWAY SHALL INCLUDE CLEANOUT OF EXISTING DRAINAGE STRUCTURES AS DIRECTED BY THE ENGINEER.

RIGHTS OF ENTRY TO CONSTRUCT SIDEWALKS, PRIVATE AND COMMERCIAL ENTRANCES HAVE BEEN OBTAINED FOR THIS PROJECT, AS SHOWN ON PLAN WITHIN TEMPORARY LIMITED EASEMENT (TLE).

UNDERDRAIN PIPE CONNECTION/TAP DRAINAGE STRUCTURES WILL BE INCIDENTAL TO PIPE UNDERDRAIN 6-INCH BID ITEM.

THE CONTRACTOR SHALL NOTIFY DIGGERS HOTLINE AND AFFECTED UTILITIES PRIOR TO THE START OF WORK. ANY LOCAL MUNICIPAL UTILITY WHICH IS NOT A MEMBER OF THE DIGGERS HOTLINE MUST BE CONTACTED SEPARATELY.



INLET AND DISCHARGE ELEVATIONS FOR DRAINAGE STRUCTURES SHOWN ON THE PLAN MAY BE ADJUSTED BY THE ENGINEER TO FIT FIELD CONDITIONS.

CROSS SECTIONS SHOWN INCLUDE THE THICKNESS OF TOPSOIL WHERE REQUIRED. TOPSOIL SHALL BE REPLACED WITH 4-INCH TYPICAL DEPTH. A SAWED JOINT IS REQUIRED WHERE NEW HMA PAVEMENT MEETS EXISTING HMA PAVEMENT.

EXISTING BUSINESS SIGNS LOCATED WITHIN THE TLE ARE TO REMAIN UNLESS SHOWN IN THE REMOVAL PLAN. REMOVAL OF EROSION CONTROL DEVICES IS INCLUDED IN THE COST OF THE RESPECTIVE BID ITEMS.

THE EROSION CONTROL FEATURES AS SHOWN IN THE PLANS ARE AT SUGGESTED LOCATIONS. EXACT LOCATIONS WILL BE DETERMINED BY THE ENGINEER IN THE FIELD.

ALL PRIVATE EXISTING UTILITIES ARE TO BE ADJUSTED BY THE UTILITIES CONCERNED, UNLESS NOTED IN THE PLANS.

PLACE TOPSOIL IN ALL GRADED AREAS AS DESIGNATED BY THE ENGINEER IMMEDIATELY AFTER GRADING HAS BEEN COMPLETED. SEED, MULCH AND FERTILIZE OR SOD AND FERTILIZE ALL AREAS WITHIN 5 CALENDAR DAYS AFTER PLACEMENT OF TOPSOIL.

SAWOUT ASPHALTIC AND CONCRETE DRIVEWAYS AND/OR PARKING LOTS AT THE MATCHLINE AS SHOWN ON THE PLAN DETAILS OR AS DIRECTED BY THE ENGINEER.

UNLESS OTHERWISE SHOWN OR NOTED, TEMPORARY PAVEMENTS SHALL BE 6-INCHES OF ASPHALTIC SURFACE TEMPORARY OVER 8-INCHES OF BASE AGGREGATE DENSE, 1 1/4-INCH.

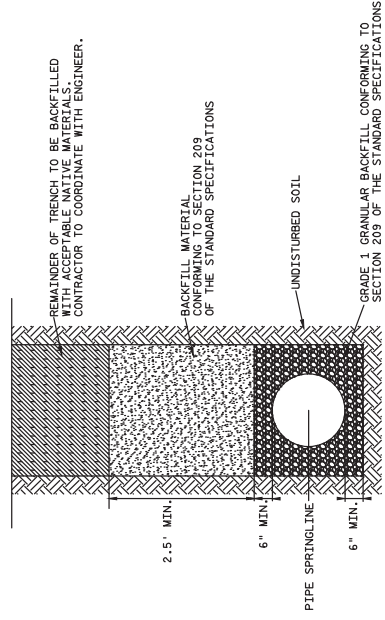
SIGNS IN CONFLICT WITH TRAFFIC CONTROL "IN USE" SHALL BE COVERED AS DIRECTED BY THE ENGINEER AND PAID FOR UNDER THE ITEM TRAFFIC CONTROL COVERING SIGNS TYPE I AND TYPE II.

ASPHALT PATHS SHALL BE CONSTRUCTED WITH ASPHALTIC SURFACE, 3-INCH OVER 4-INCHES OF BASE AGGREGATE DENSE 1 1/4-INCH.

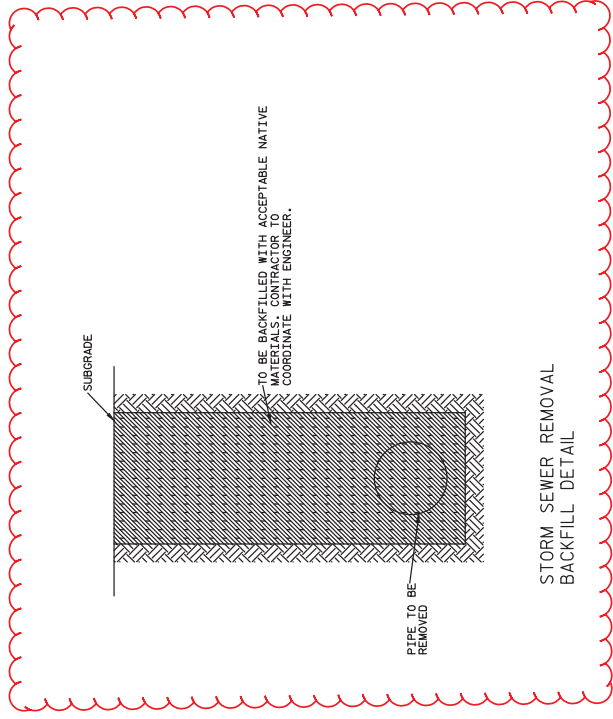
CONSTRUCT HMA PAVEMENT WITH THE FOLLOWING LAYERS AND GRADATIONS:

PAVEMENT TYPE	TOTAL LAYER PAVEMENT THICKNESS	LAYERS	NOMINAL MAXIMUM SIZE GRADATION	ASPHALTIC MATERIAL
E-10	8"	2" UPPER LAYER 3" LOWER LAYER 3" LOWER LAYER	12.5 MM 19.0 MM 19.0 MM	PG-64-28 PG-64-28 PG-64-28
E-1	6"	2.5" UPPER LAYER 3.5" LOWER LAYER	12.5 MM 19.0 MM	PG-64-28 PG-64-28
ASPHALTIC SURFACE	5"	2.5" UPPER LAYER 2.5" LOWER LAYER	19.00 MM	
ASPHALTIC SURFACE TEMPORARY	6"	SINGLE LAYER	25.00 MM	

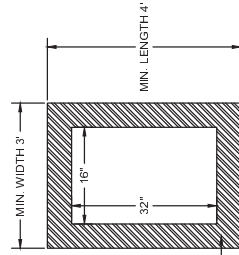
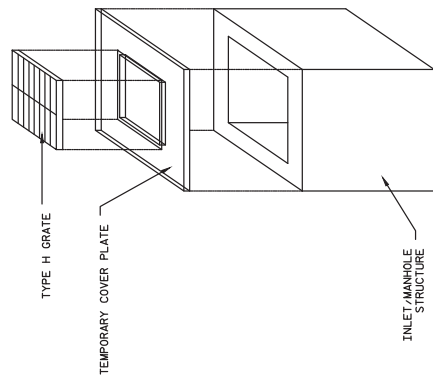
Addendum No.2
ID 2265-16-70
Revised Sheet 3
February 6, 2015



STORM SEWER TRENCH DETAIL



Addendum No.2
 ID 2265-16-70
 Revised Sheet 51
 February 6, 2015



STEEL TEMPORARY COVER PLATE

TEMPORARY COVER PLATE DETAIL

NOTES:
 TEMPORARY COVER PLATE SHALL BE H2O LOAD RATED STEEL PLATE. CONTRACTOR SHALL CUT A 16" WIDE BY 32" LONG HOLE IN THE COVER PLATE. THE COVER PLATE SHALL BE PLACED IN THE INLET STRUCTURE. THE GRATE SHALL BE PLACED IN THE INLET STRUCTURE OVER THE OPENING IN STAGE 1 CONSTRUCTION TO ALLOW FOR DRAINAGE DURING STAGES 1 AND 2. IN STAGE 3 WHEN CURB AND GUTTER ARE ROADED THE TEMPORARY COVER PLATE SHALL BE REMOVED. THE TYPE H GRATE SHALL BE THEN PLACED ON THE FRAME. MINIMUM PLATE DIMENSIONS SHALL BE 3" WIDE BY 4' LONG. MINIMUM STEEL PLATE THICKNESS CAPABLE OF RESISTING H2O LOADING.