



# Wisconsin Department of Transportation

February 3, 2015

**Division of Transportation Systems Development**

Bureau of Project Development  
 4802 Sheboygan Avenue, Rm 601  
 P O Box 7916  
 Madison, WI 53707-7916

**NOTICE TO ALL CONTRACTORS:**

Telephone: (608) 266-1631  
 Facsimile (FAX): (608) 266-8459

**Proposal #15: 3729-00-74, WISC 2015 092**  
**39<sup>th</sup> Avenue**  
**STH 165 to 97<sup>th</sup> Street**  
**Local Street**  
**Kenosha County**

**Letting of February 10, 2015**

This is Addendum No. 1, which provides for the following:

**Special Provisions**

Added Special Provisions	
Article No.	Description
36	Traffic
37	Public Convenience and Safety
38	Concrete Curb and Gutter 8.75-inch Depth 30-Inch Type A

**Schedule of Items**

Added Bid Item Quantities					
Bid Item	Item Description	Unit	Old Quantity	Revised Quantity	Proposal Total
416.0620	Drilled Dowel Bars	Each	0	80	80
SPV.0090.08	Concrete Curb and Gutter 8.75-Inch Depth Type A	LF	0	12,200	12,200

Deleted Bid Item Quantities					
Bid Item	Item Description	Unit	Old Quantity	Revised Quantity	Proposal Total
601.0409	Concrete Curb and Gutter 30-Inch Type A	LF	12,200	0	0

**Plan Sheets**

<b>Revised Plan Sheets</b>	
Plan Sheet	Plan Sheet Title (brief description of changes to sheet)
6-9	Typical Sections - Added tie bars at lane lines and changed concrete curb and gutter type
10	Construction Details – Added construction detail for new curb and gutter type
17-22	Paving Details – Added Tie bars at match points and updated legend with new curb and gutter type.
66	Miscellaneous Quantities – Changed curb and gutter type and added drilled tie bars

<b>Added Plan Sheets</b>	
Plan Sheet	Plan Sheet Title (brief description of changes to sheet)
22A	Paving Details –Sheet 22A was missing from plan set and has been included.

The responsibility for notifying potential subcontractors and suppliers of these changes remains with the prime contractor.

Sincerely,

*Mike Coleman*

Proposal Development Specialist  
Proposal Management Section

**ADDENDUM NO. 1**

**3729-00-74**

**February 3, 2015**

**Special Provisions**

**36. Traffic.**

Maintain access to properties along 39<sup>th</sup> Avenue and Springbrook Road to residents, businesses, and emergency vehicles at all times. All driveways for the Pleasant Prairie Village Hall and Fire Department on Springbrook Road must be accessible at all times without specific approval by the engineer. Maintain and keep open access to all other driveways and parking lots where alternative access is not available at all times by closing one driveway at a time, or constructing the driveway one half at a time.

Do not store equipment, vehicles or materials beyond the project limits without specific approval by the engineer.

**37. Public Convenience and Safety.**

*Revise standard spec 107.8(6) as follows:*

Check for and comply with local ordinances governing the hours of operation of construction equipment. Do not operate motorized construction equipment from 10:00 PM until the following 7:00 AM on weekdays and from 9:00 PM until the following 8:00 AM on weekends, unless prior written approval is obtained from the engineer.

**38. Concrete Curb and Gutter 8.75-Inch Depth 30-Inch Type A, Item SPV.0090.08**

**A Description**

Perform this work in accordance to the pertinent requirements of section 601 of the standard specifications and conform to the construction detail shown in the plans.

**B Materials**

Use materials as described in the construction detail shown in the plans.

**C Construction**

Perform work in accordance to subsection 601.3 of the standard specifications.

**D Measurement**

The department will measure Concrete Curb and Gutter 8-Inch Depth 30-Inch Type A by the linear foot acceptably completed, measured along the flow line of the gutter.

**E Payment**

The Department will pay for measured quantities at the unit price under the following bid item:

ITEM NUMBER	DESCRIPTION	UNIT
SPV.0090.08	Concrete Curb and Gutter 8.75-Inch Depth 30-Inch Type A	LF

Payment is full compensation for preparing the foundation; all special construction required at driveway entrances or curb ramps; for providing all materials, including concrete, and expansion joints; for placing, finishing, protecting, and curing concrete, and for furnishing all labor, tools, equipment, and incidentals necessary to complete the contract work.

**Schedule of Items**

Attached, dated February 3, 2015, are the revised Schedule of Items Pages 1 – 18.

**Plan Sheets**

The following 8½ x 11-inch sheets are attached and made part of the plans for this proposal:

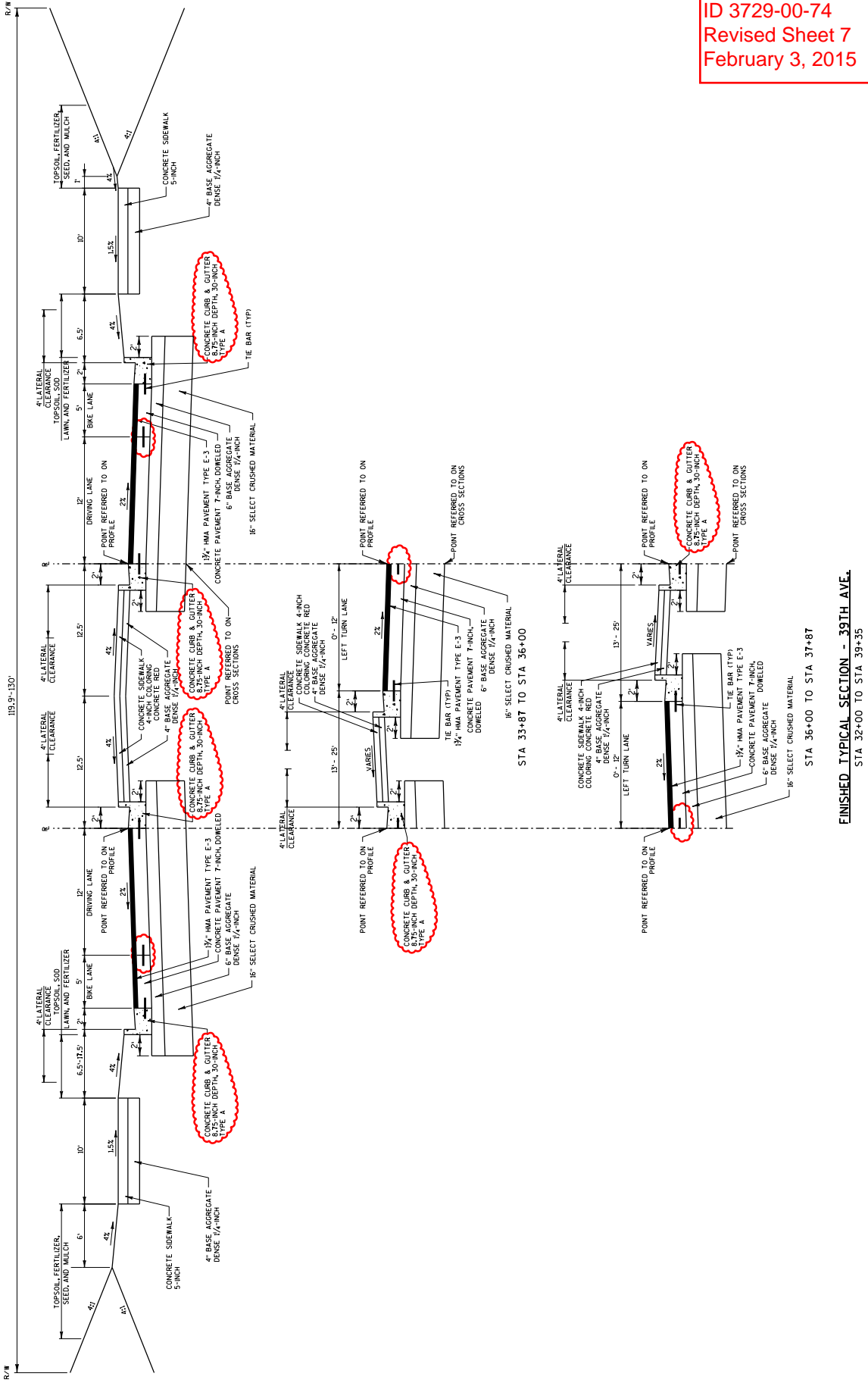
Revised: 6-10, 17-22, and 66.

Added: 22A

END OF ADDENDUM

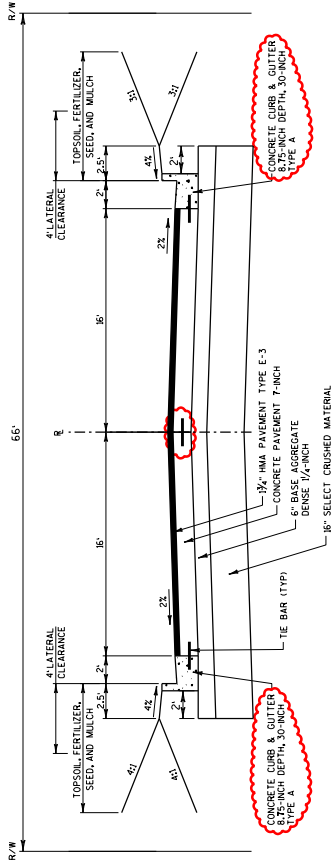


Addendum No. 1  
 ID 3729-00-74  
 Revised Sheet 7  
 February 3, 2015

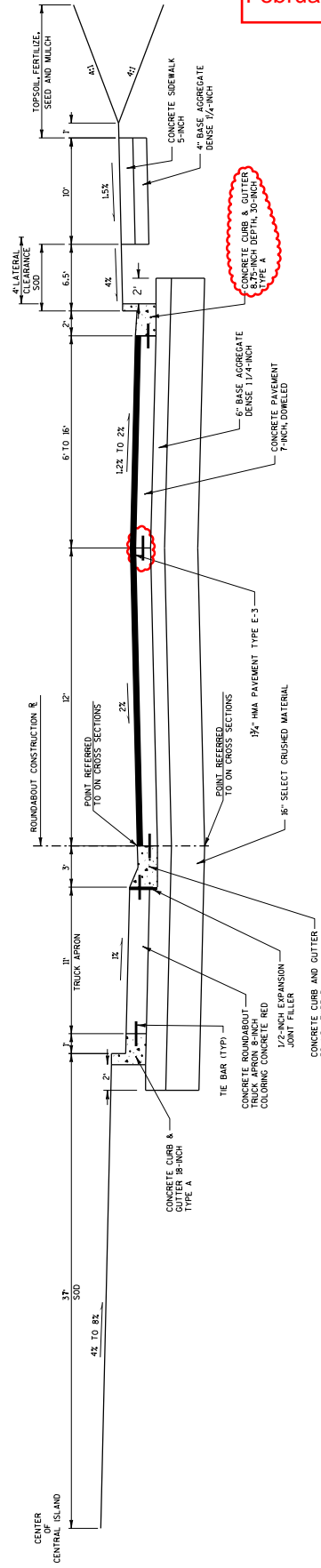


FINISHED TYPICAL SECTION - 39TH AVE.  
 STA 32+00 TO STA 39+35





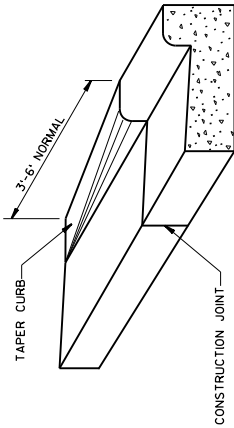
**FINISHED TYPICAL SECTION - 100TH STREET**  
 STA 300+23 TO STA 301+00



**ROUNDABOUT - TYPICAL HALF-SECTION FOR 39TH AVE & SPRINGBROOK RD**

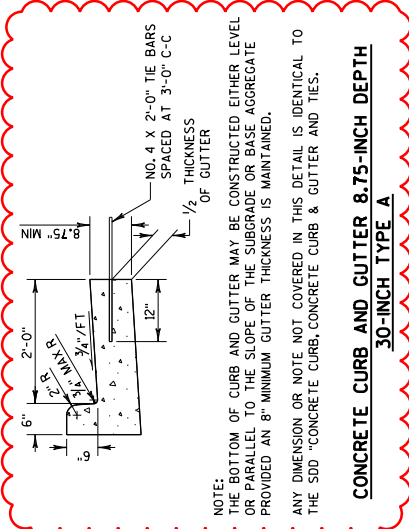
Addendum No. 1  
 ID 3729-00-74  
 Revised Sheet 9  
 February 3, 2015





**DETAIL OF CURB & GUTTER TERMINI**

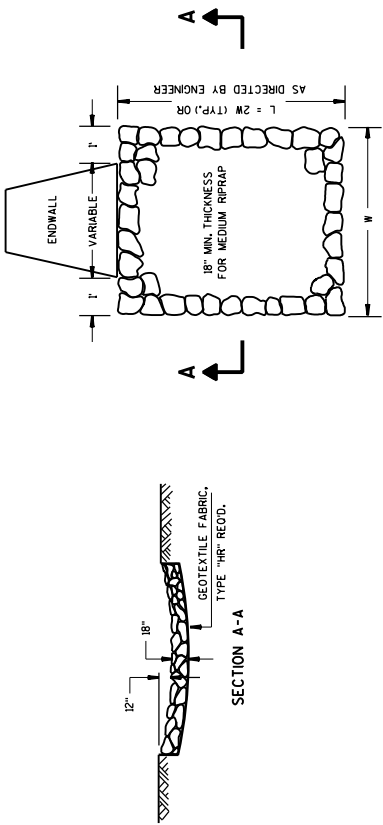
STA 4H+03 RT  
STA 11H+50 LT  
STA 11H+50 RT



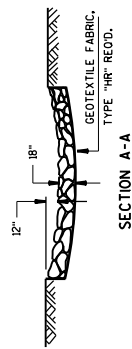
**CONCRETE CURB AND GUTTER 8.75-INCH DEPTH  
30-INCH TYPE A**

**NOTE:**  
THE BOTTOM OF CURB AND GUTTER MAY BE CONSTRUCTED EITHER LEVEL OR PARALLEL TO THE SLOPE OF THE SUBGRADE OR BASE AGGREGATE PROVIDED AN 8" MINIMUM GUTTER THICKNESS IS MAINTAINED.  
ANY DIMENSION OR NOTE NOT COVERED IN THIS DETAIL IS IDENTICAL TO THE SDD "CONCRETE CURB, CONCRETE CURB & GUTTER AND TIES."

NO. 4 X 2'-0" TIE BARS  
SPACED AT 3'-0" C-C  
1/2 THICKNESS  
OF GUTTER



**MEDIUM RIPRAP TREATMENT AT CULVERTS**

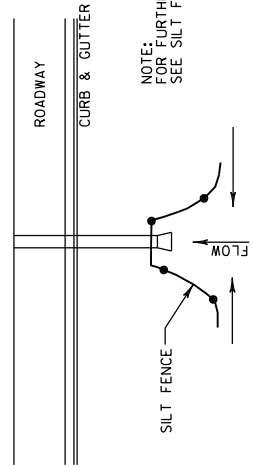


**SECTION A-A**

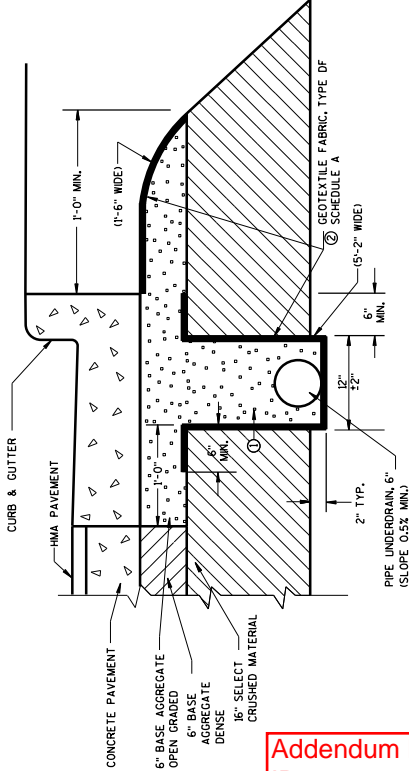
**GENERAL NOTES**

THE DIMENSIONS SHOWN ON THE TYPICAL CROSS SECTIONS WILL GOVERN IN THE EVENT THERE IS A CONFLICT WITH THE DETAILS SHOWN ON THIS DRAWING.

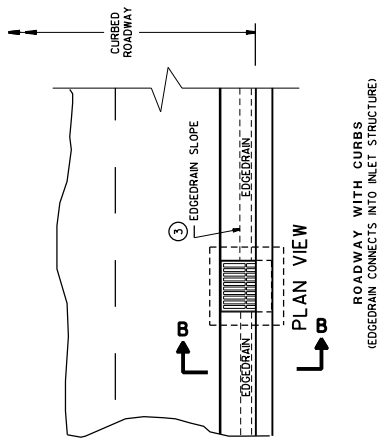
- ① TRENCH BACKFILL WILL BE PAD FOR AS BASE AGGREGATE OPEN GRADED.
- ② TOTAL FABRIC WIDTH IS 6'-8" FOR PAYMENT.
- ③ EDGE DRAIN SHALL BE LAID PARALLEL TO THE GRADE OF ROADWAY.



**TYPICAL SILT FENCE DETAIL AT PIPE INLET**



**EDGE DRAIN IN URBAN ROADWAY  
SECTION B-B**

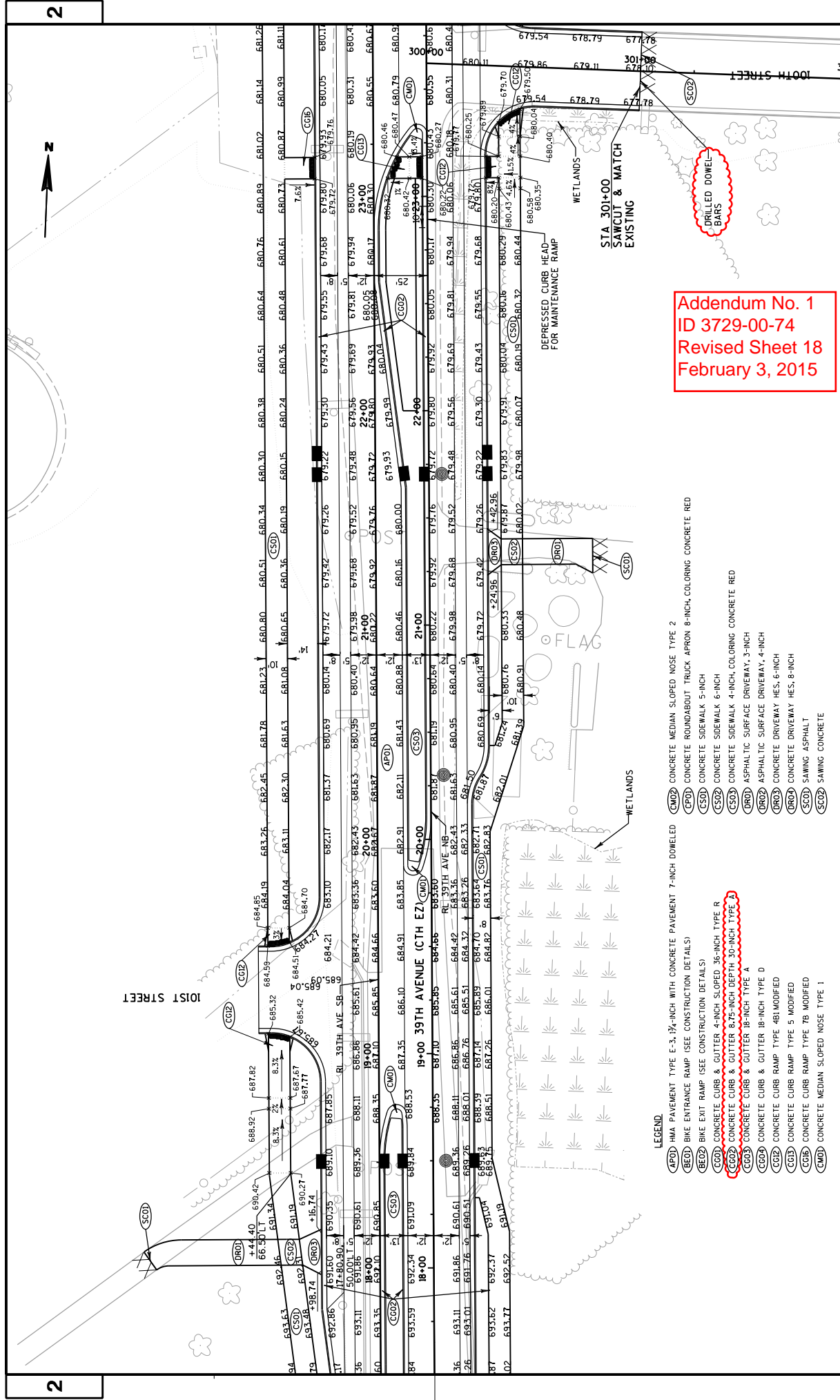


**PLAN VIEW**

**NOTE:**  
SEE TYPICAL SECTIONS, STORM SEWER PLANS & MISC QUANTITIES FOR LOCATIONS.

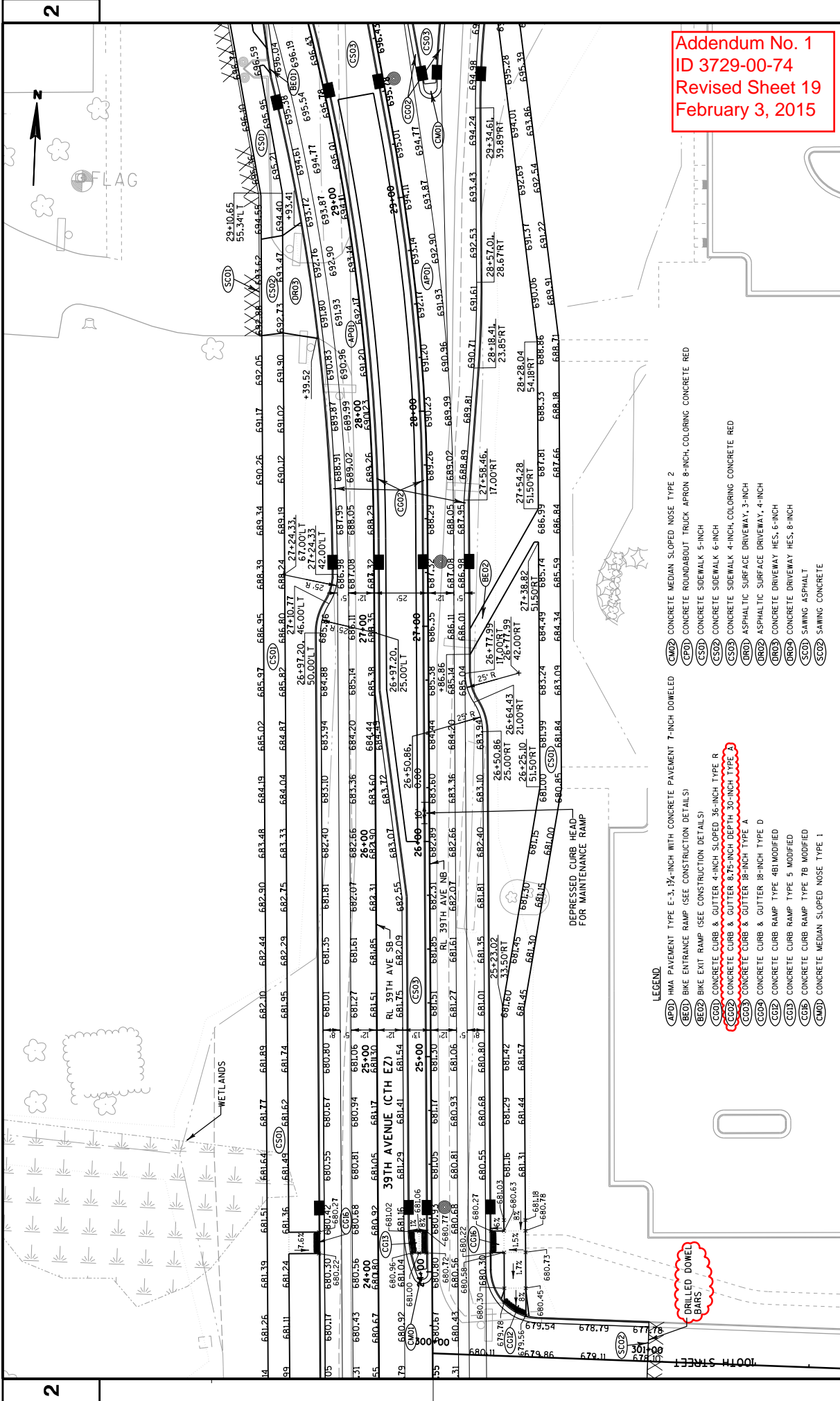
**Addendum No. 1  
ID 3729-00-74  
Revised Sheet 10  
February 3, 2015**





Addendum No. 1  
ID 3729-00-74  
Revised Sheet 18  
February 3, 2015

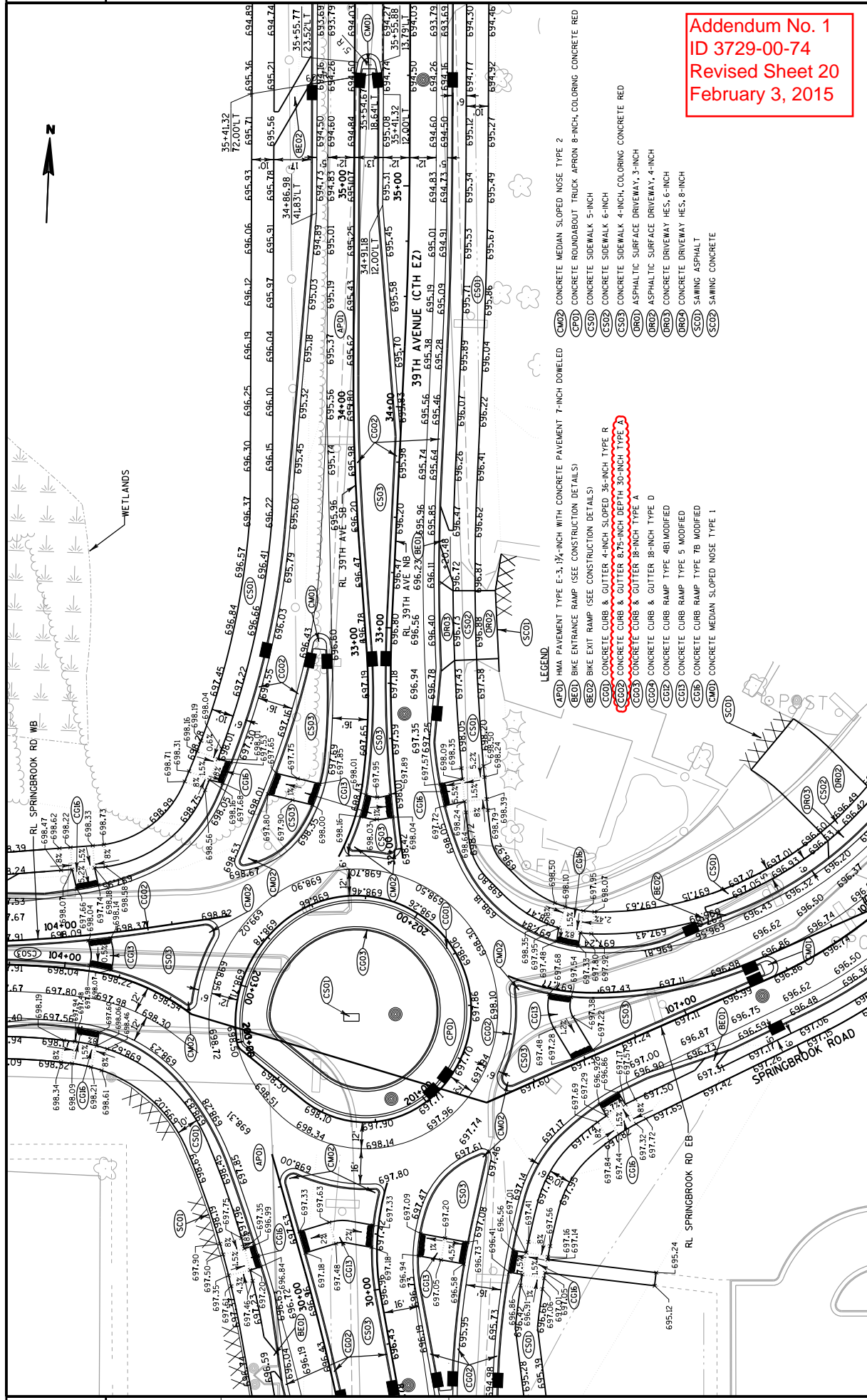
- LEGEND**
- (E-3) HMA PAVEMENT TYPE E-3, 1 1/2-INCH WITH CONCRETE PAVEMENT 7-INCH DOWELED
  - (BE0) BIKE ENTRANCE RAMP (SEE CONSTRUCTION DETAILS)
  - (BE2) BIKE EXIT RAMP (SEE CONSTRUCTION DETAILS)
  - (C00) CONCRETE CURB & GUTTER 4-INCH SLOPED 36-INCH TYPE R
  - (C02) CONCRETE CURB & GUTTER 8.75-INCH DEPTH 30-INCH TYPE 3
  - (C03) CONCRETE CURB & GUTTER 18-INCH TYPE A
  - (C04) CONCRETE CURB & GUTTER 18-INCH TYPE D
  - (C05) CONCRETE CURB RAMP TYPE 4B1MODIFIED
  - (C06) CONCRETE CURB RAMP TYPE 5 MODIFIED
  - (C07) CONCRETE CURB RAMP TYPE TB MODIFIED
  - (C08) CONCRETE MEDIAN SLOPED NOSE TYPE 1
  - (C09) CONCRETE MEDIAN SLOPED NOSE TYPE 2
  - (EFD) CONCRETE ROUNDABOUT TRUCK APRON 8-INCH, COLORING CONCRETE RED
  - (CSD) CONCRETE SIDEWALK 5-INCH
  - (CS2) CONCRETE SIDEWALK 6-INCH
  - (CS3) CONCRETE SIDEWALK 4-INCH, COLORING CONCRETE RED
  - (DRD) ASPHALTIC SURFACE DRIVEWAY, 3-INCH
  - (DR2) ASPHALTIC SURFACE DRIVEWAY, 4-INCH
  - (DR3) CONCRETE DRIVEWAY HES, 6-INCH
  - (DR4) CONCRETE DRIVEWAY HES, 8-INCH
  - (SCD) SAWING ASPHALT
  - (SC2) SAWING CONCRETE



Addendum No. 1  
 ID 3729-00-74  
 Revised Sheet 19  
 February 3, 2015

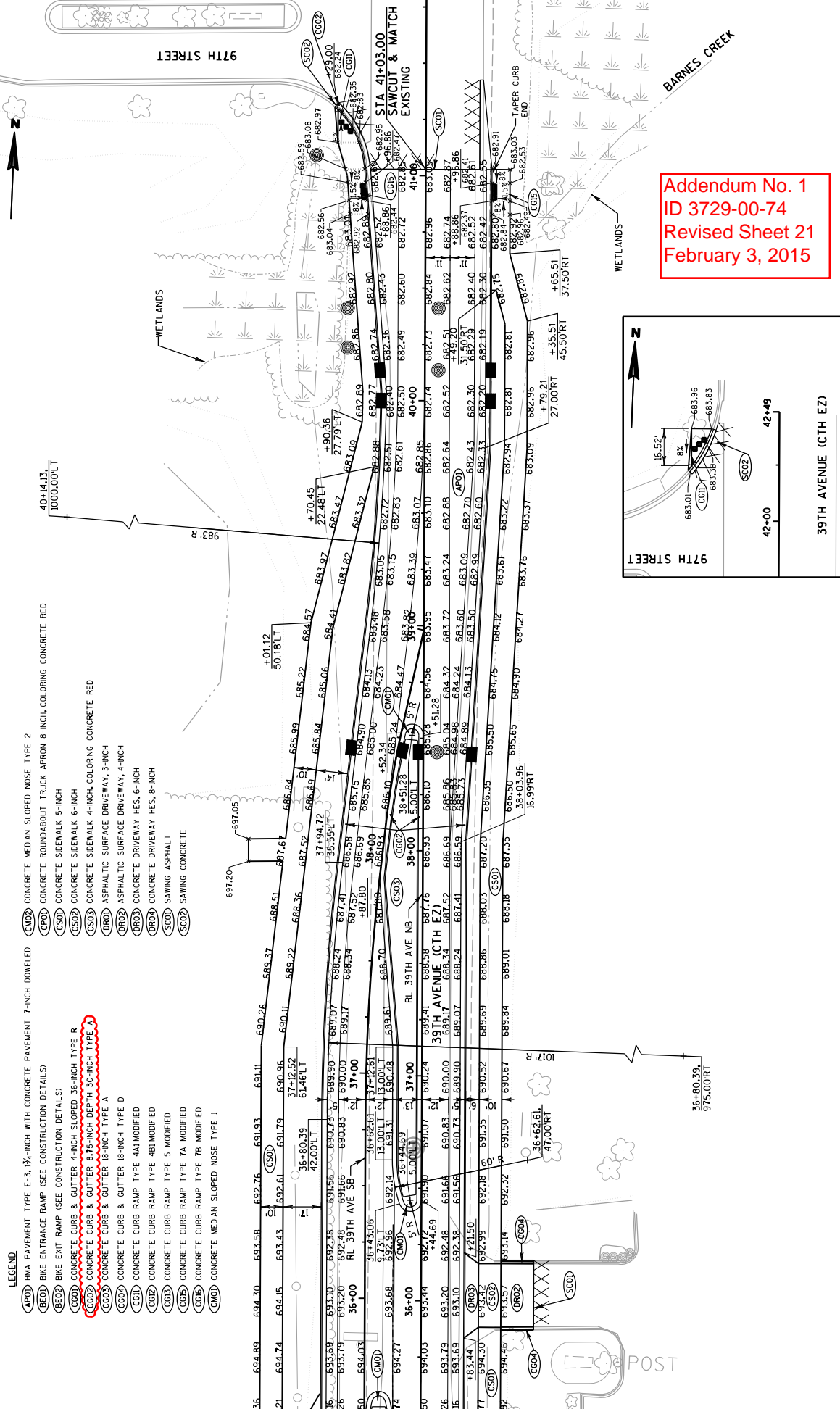
- LEGEND**
- (APD) HMA PAVEMENT TYPE E-3, 1 1/4-INCH WITH CONCRETE PAVEMENT 7-INCH DOWELED
  - (BED) BIKE ENTRANCE RAMP (SEE CONSTRUCTION DETAILS)
  - (BEZ) BIKE EXIT RAMP (SEE CONSTRUCTION DETAILS)
  - (CCD) CONCRETE CURB & GUTTER 4-INCH SLOPED 36-INCH TYPE R
  - (CCD) CONCRETE CURB & GUTTER 4-INCH SLOPED 36-INCH TYPE A
  - (CCD) CONCRETE CURB & GUTTER 8 1/2-INCH DEPTH 30-INCH TYPE A
  - (CCD) CONCRETE CURB & GUTTER 18-INCH TYPE A
  - (CCD) CONCRETE CURB & GUTTER 18-INCH TYPE D
  - (CCD) CONCRETE CURB RAMP TYPE 4B1 MODIFIED
  - (CCD) CONCRETE CURB RAMP TYPE 5 MODIFIED
  - (CCD) CONCRETE CURB RAMP TYPE 7B MODIFIED
  - (CCD) CONCRETE MEDIAN SLOPED NOSE TYPE 1
  - (CON) CONCRETE MEDIAN SLOPED NOSE TYPE 2
  - (FPO) CONCRETE ROUNDABOUT TRUCK APRON 8-INCH, COLORING CONCRETE RED
  - (CSI) CONCRETE SIDEWALK 5-INCH
  - (CSO) CONCRETE SIDEWALK 4-INCH, COLORING CONCRETE RED
  - (BRD) ASPHALTIC SURFACE DRIVEWAY, 3-INCH
  - (BRD) ASPHALTIC SURFACE DRIVEWAY, 4-INCH
  - (BRD) CONCRETE DRIVEWAY HES, 6-INCH
  - (BRD) CONCRETE DRIVEWAY HES, 8-INCH
  - (SCO) SAWING ASPHALT
  - (SCD) SAWING CONCRETE





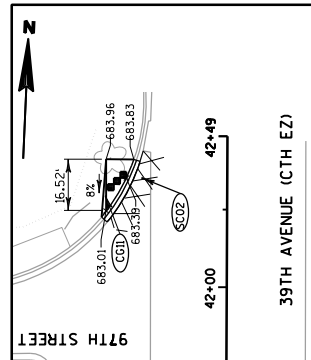
Addendum No. 1  
 ID 3729-00-74  
 Revised Sheet 20  
 February 3, 2015

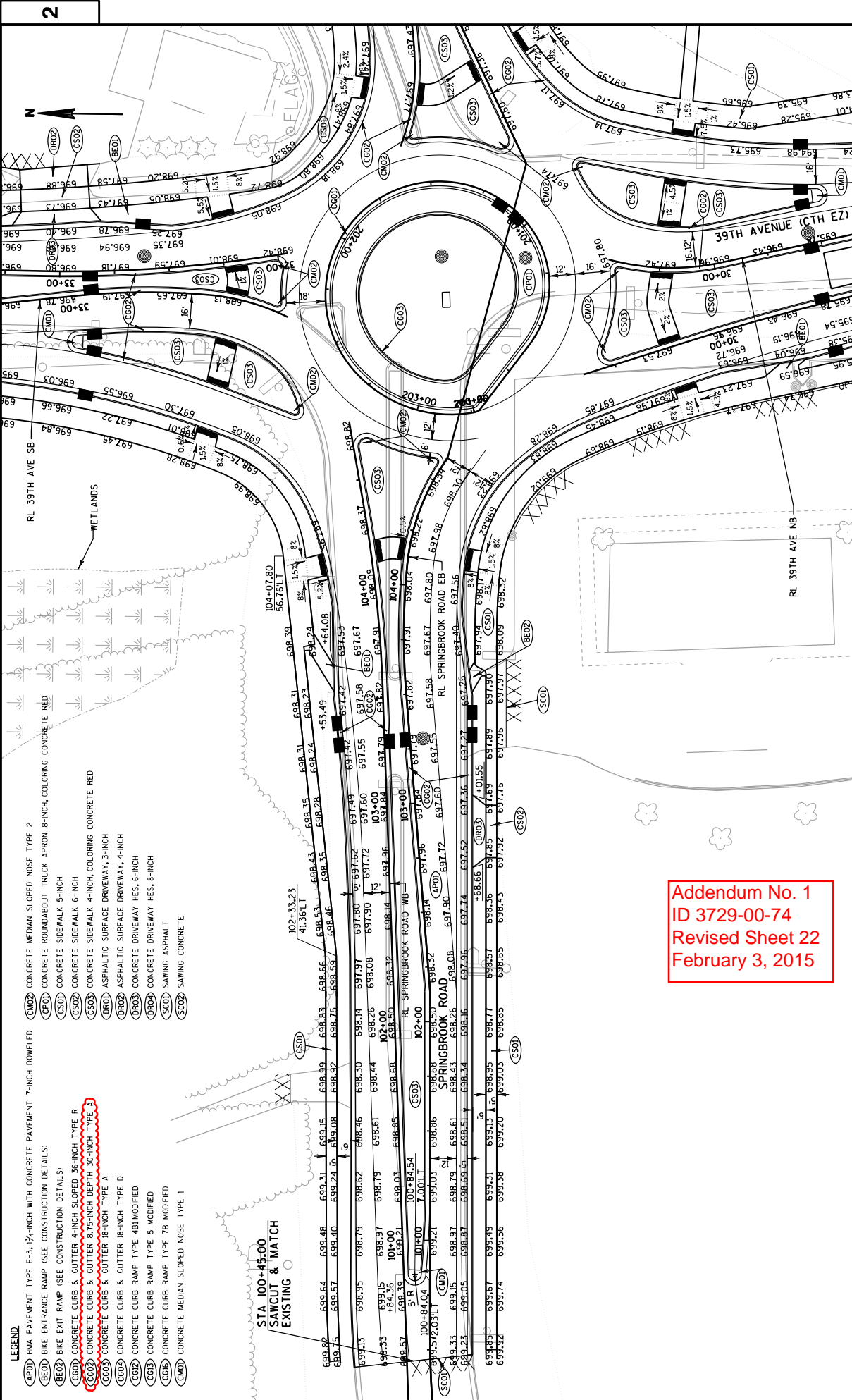
- LEGEND
- (CM02) HMA PAVEMENT TYPE E-3, 1/2-INCH WITH CONCRETE PAVEMENT 7-INCH DOMELED
  - (AP02) BIKE ENTRANCE RAMP (SEE CONSTRUCTION DETAILS)
  - (BE02) BIKE EXIT RAMP (SEE CONSTRUCTION DETAILS)
  - (CG02) CONCRETE CURB & GUTTER 4-INCH SLOPED 36-INCH TYPE R
  - (CG03) CONCRETE CURB & GUTTER 6.75-INCH DEPTH 30-INCH TYPE R
  - (CG04) CONCRETE CURB & GUTTER 18-INCH TYPE A
  - (CG05) CONCRETE CURB & GUTTER 18-INCH TYPE D
  - (CG06) CONCRETE CURB RAMP TYPE 4B MODIFIED
  - (CG07) CONCRETE CURB RAMP TYPE 5 MODIFIED
  - (CG08) CONCRETE CURB RAMP TYPE 7B MODIFIED
  - (CM01) CONCRETE MEDIAN SLOPED NOSE TYPE 1
  - (SC01) SAWING CONCRETE
  - (CM03) CONCRETE MEDIAN SLOPED NOSE TYPE 2
  - (EP01) CONCRETE ROUNDABOUT TRUCK APRON 8-INCH, COLORING CONCRETE RED
  - (CS01) CONCRETE SIDEWALK 5-INCH
  - (CS02) CONCRETE SIDEWALK 6-INCH
  - (CS03) CONCRETE SIDEWALK 4-INCH, COLORING CONCRETE RED
  - (DR01) ASPHALTIC SURFACE DRIVEWAY, 3-INCH
  - (DR02) ASPHALTIC SURFACE DRIVEWAY, 4-INCH
  - (DR03) CONCRETE DRIVEWAY HES, 6-INCH
  - (DR04) CONCRETE DRIVEWAY HES, 8-INCH
  - (SD01) SAWING ASPHALT
  - (SC02) SAWING CONCRETE



- LEGEND**
- (AFD) HMA PAVEMENT TYPE E-3, 1/2-INCH WITH CONCRETE PAVEMENT 7-INCH DOWELED
  - (BEI) BIKE ENTRANCE RAMP (SEE CONSTRUCTION DETAILS)
  - (BER) BIKE EXIT RAMP (SEE CONSTRUCTION DETAILS)
  - (CDD) CONCRETE CURB & GUTTER 4-INCH-SLOPED 36-INCH TYPE B
  - (CDE) CONCRETE CURB & GUTTER 4-INCH-SLOPED 36-INCH TYPE A
  - (CEC) CONCRETE CURB & GUTTER 8.75-INCH DEPTH 30-INCH TYPE A
  - (CEG) CONCRETE CURB & GUTTER 18-INCH TYPE A
  - (CED) CONCRETE CURB & GUTTER 18-INCH TYPE D
  - (CCL) CONCRETE CURB RAMP TYPE 4A1 MODIFIED
  - (CCR) CONCRETE CURB RAMP TYPE 4B1 MODIFIED
  - (CCS) CONCRETE CURB RAMP TYPE 5 MODIFIED
  - (CCM) CONCRETE CURB RAMP TYPE 7A MODIFIED
  - (CCN) CONCRETE CURB RAMP TYPE 7B MODIFIED
  - (CMD) CONCRETE MEDIAN SLOPED NOSE TYPE 1
  - (CMD2) CONCRETE MEDIAN SLOPED NOSE TYPE 2
  - (CPO) CONCRETE ROUNDABOUT TRUCK APRON 8-INCH, COLORING CONCRETE RED
  - (CS0) CONCRETE SIDEWALK 5-INCH
  - (CS2) CONCRETE SIDEWALK 6-INCH
  - (CS3) CONCRETE SIDEWALK 4-INCH, COLORING CONCRETE RED
  - (CS4) CONCRETE SURFACE DRIVEWAY, 3-INCH
  - (BR0) ASPHALTIC SURFACE DRIVEWAY, 4-INCH
  - (BR2) ASPHALTIC SURFACE DRIVEWAY, HES, 6-INCH
  - (BR3) CONCRETE DRIVEWAY HES, 8-INCH
  - (SC0) SAWING ASPHALT
  - (SC2) SAWING CONCRETE

Addendum No. 1  
 ID 3729-00-74  
 Revised Sheet 21  
 February 3, 2015





- LEGEND:**
- (APD) HMA PAVEMENT TYPE E-3, 1 1/2-INCH WITH CONCRETE PAVEMENT 7-INCH DOWELED
  - (BED) BIKE ENTRANCE RAMP (SEE CONSTRUCTION DETAILS)
  - (BE2) BIKE EXIT RAMP (SEE CONSTRUCTION DETAILS)
  - (CC0) CONCRETE CURB & GUTTER 4-INCH SLOPED, 36-INCH TYPE R
  - (CC02) CONCRETE CURB & GUTTER 8 1/2-INCH DEPTH 30-INCH TYPE B
  - (CC03) CONCRETE CURB & GUTTER 18-INCH TYPE A
  - (CC04) CONCRETE CURB & GUTTER 18-INCH TYPE D
  - (CC2) CONCRETE CURB RAMP TYPE 4B MODIFIED
  - (CC3) CONCRETE CURB RAMP TYPE 5 MODIFIED
  - (CC6) CONCRETE CURB RAMP TYPE 7B MODIFIED
  - (CMD) CONCRETE MEDIAN SLOPED NOSE TYPE 1
  - (CND) CONCRETE MEDIAN SLOPED NOSE TYPE 2
  - (CPD) CONCRETE ROUNDABOUT TRUCK APRON 8-INCH, COLORING CONCRETE RED
  - (CS0) CONCRETE SIDEWALK 5-INCH
  - (CS2) CONCRETE SIDEWALK 6-INCH
  - (CS3) CONCRETE SIDEWALK 4-INCH, COLORING CONCRETE RED
  - (AS0) ASPHALTIC SURFACE DRIVEWAY, 3-INCH
  - (AS2) ASPHALTIC SURFACE DRIVEWAY, 4-INCH
  - (IN0) CONCRETE DRIVEWAY HES, 6-INCH
  - (IN2) CONCRETE DRIVEWAY HES, 8-INCH
  - (SAS) SAWING ASPHALT
  - (SC0) SAWING CONCRETE

STA 100+45.00  
SAWCUT & MATCH  
EXISTING

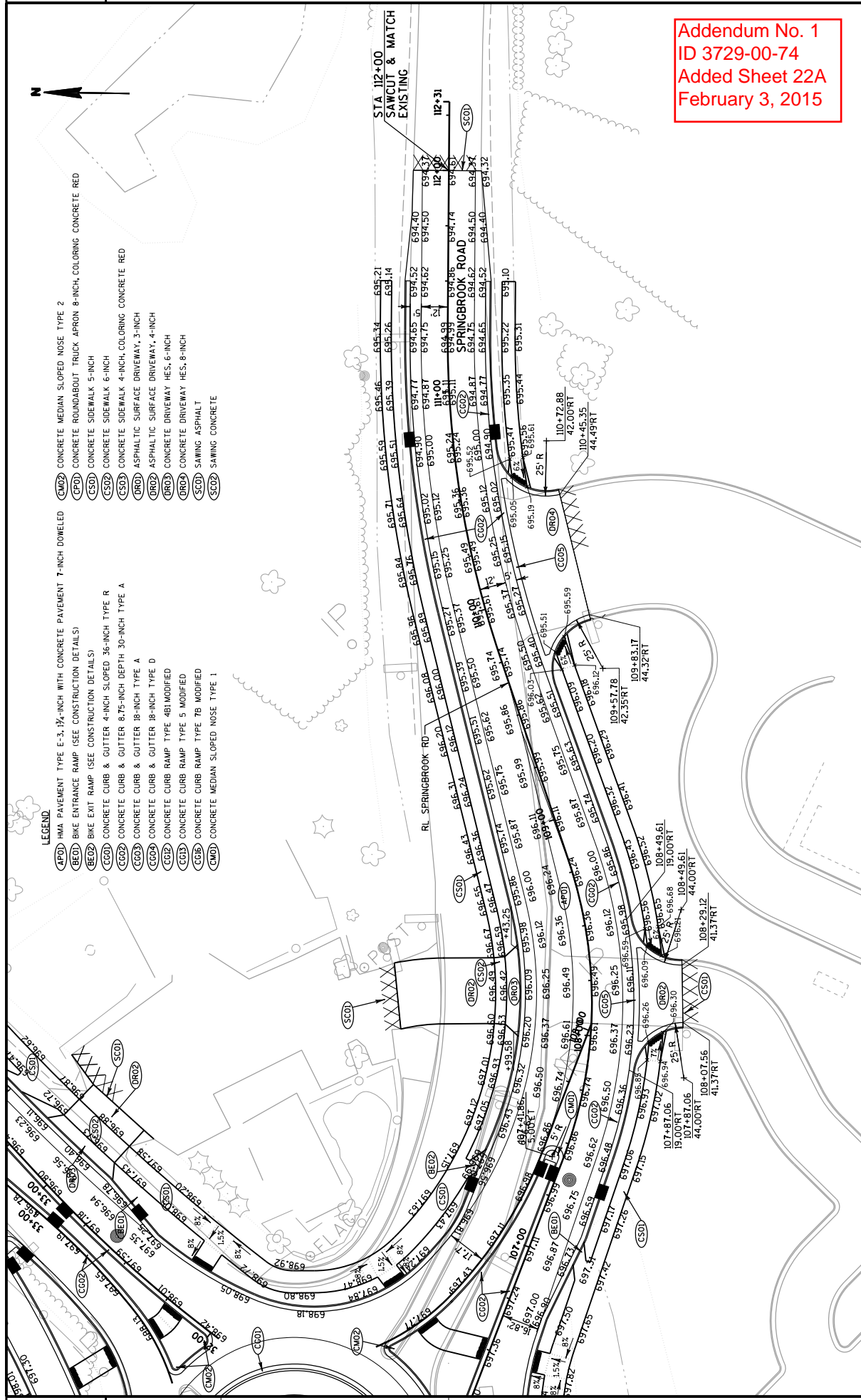
Addendum No. 1  
ID 3729-00-74  
Revised Sheet 22  
February 3, 2015





LEGEND

- (APD) HMA PAVEMENT TYPE E-3, 1 1/2-INCH WITH CONCRETE PAVEMENT 7-INCH DOWELED
- (BED) BIKE ENTRANCE RAMP (SEE CONSTRUCTION DETAILS)
- (BED) BIKE EXIT RAMP (SEE CONSTRUCTION DETAILS)
- (CGD) CONCRETE CURB & GUTTER 4-INCH SLOPED 36-INCH TYPE R
- (CGD) CONCRETE CURB & GUTTER 8.75-INCH DEPTH 30-INCH TYPE A
- (CGD) CONCRETE CURB & GUTTER 18-INCH TYPE A
- (CGD) CONCRETE CURB & GUTTER 18-INCH TYPE D
- (CGD) CONCRETE CURB RAMP TYPE 4B1 MODIFIED
- (CGD) CONCRETE CURB RAMP TYPE 5 MODIFIED
- (CUB) CONCRETE CURB RAMP TYPE 7B MODIFIED
- (CMD) CONCRETE MEDIAN SLOPED NOSE TYPE 1
- (CNS) CONCRETE MEDIAN SLOPED NOSE TYPE 2
- (CPD) CONCRETE ROUNDABOUT TRUCK APRON 8-INCH, COLORING CONCRETE RED
- (CSD) CONCRETE SIDEWALK 5-INCH
- (CSD) CONCRETE SIDEWALK 6-INCH
- (CSD) CONCRETE SIDEWALK 4-INCH, COLORING CONCRETE RED
- (DRD) ASPHALTIC SURFACE DRIVEWAY, 3-INCH
- (DRD) ASPHALTIC SURFACE DRIVEWAY, 4-INCH
- (DRD) CONCRETE DRIVEWAY HES, 6-INCH
- (DRD) CONCRETE DRIVEWAY HES, 8-INCH
- (SDI) SAWING ASPHALT
- (SCD) SAWING CONCRETE



Addendum No. 1  
 ID 3729-00-74  
 Added Sheet 22A  
 February 3, 2015



PIPE UNDERDRAIN				CONCRETE				DRILLED DOWEL BARS			
STATION	LOCATION	QUANTITY	UNIT	STATION	LOCATION	QUANTITY	UNIT	STATION	LOCATION	QUANTITY	UNIT
21+75	39TH	50	200	415.0270	DRIVEWAY	240	580	415.0280	DRIVEWAY	39TH	50
40+00	39TH	50	200	415.0280	DRIVEWAY	46	230	415.0280	DRIVEWAY	15+75	39TH
103+00	SPRINGBROOK	50	200	415.0280	DRIVEWAY	23	150	415.0280	DRIVEWAY	301+00	100TH
PROJECT TOTAL			150	PROJECT TOTAL			340	PROJECT TOTAL			30

SAPHALTIC ITEMS				CONCRETE CURB AND GUTTER				
STATION	LOCATION	QUANTITY	UNIT	STATION	LOCATION	QUANTITY	UNIT	
15+75	39TH ROADWAY	57	580	601.0205	GUTTER	180	240	
15+80	30+45	14	1100	601.0205	GUTTER	180	240	
32+00	41+03	300	530	601.0411	30-NCH TYPE A	65	330	
32+00	41+03	5	180	601.0411	30-NCH TYPE B	65	330	
100+45	104+80	160	220	601.0411	30-NCH TYPE C	65	330	
108+10	112+00	12	158	601.0411	30-NCH TYPE D	65	330	
108+10	112+00	230	250	601.0411	30-NCH TYPE E	65	330	
108+10	112+00	14	49	601.0411	30-NCH TYPE F	65	330	
200+00	203+25	130	52	601.0411	30-NCH TYPE G	65	330	
PROJECT TOTAL			1480	PROJECT TOTAL			180	240

CONCRETE SIDEWALK				LAWN RESTORATION				
STATION	LOCATION	QUANTITY	UNIT	STATION	LOCATION	QUANTITY	UNIT	
40+50	39TH	140	12000	624.0100	WATER	100	9000	
35+00	45+37	85	6900	624.0100	WATER	54	4800	
100+45	104+80	47	3800	624.0100	WATER	22	2000	
108+10	112+00	1500	6300	624.0100	WATER	27	2400	
200+00	203+25	25	112	624.0100	WATER	51	460	
PROJECT TOTAL			24800	PROJECT TOTAL			2681	23280

RFRAP				CONCRETE MEDIAN				LANDMARK REFERENCE MONUMENT			
STATION	LOCATION	QUANTITY	UNIT	STATION	LOCATION	QUANTITY	UNIT	STATION	OFF FEET	EA	EA
40+85	70+RT	11	23	15+75	30+45	39TH	1	38+68	41T	1	1
PROJECT TOTAL			11	PROJECT TOTAL			240	PROJECT TOTAL			1

EROSION CONTROL SCHEDULE			
STATION	LOCATION	QUANTITY	UNIT
15+75	30+45	39TH	10
32+00	45+37	39TH	10
100+45	104+80	SPRINGBROOK	10
108+10	112+00	SPRINGBROOK	10
200+00	203+25	ROUNDABOUT	10
PROJECT TOTAL			50

Addendum No. 1  
ID 3729-00-74  
Revised Sheet 66  
February 3, 2015

DRILLED DOWEL BARS

STATION	LOCATION	QUANTITY	UNIT
415.0280	DRIVEWAY	39TH	50
415.0280	DRIVEWAY	15+75	30
415.0280	DRIVEWAY	100TH	30
PROJECT TOTAL			90

STATION	LOCATION	QUANTITY	UNIT
601.0411	30-NCH TYPE A	65	330
601.0411	30-NCH TYPE B	65	330
601.0411	30-NCH TYPE C	65	330
601.0411	30-NCH TYPE D	65	330
601.0411	30-NCH TYPE E	65	330
601.0411	30-NCH TYPE F	65	330
601.0411	30-NCH TYPE G	65	330
PROJECT TOTAL			420

LAWN RESTORATION

STATION	LOCATION	QUANTITY	UNIT
624.0100	WATER	100	9000
624.0100	WATER	54	4800
624.0100	WATER	22	2000
624.0100	WATER	27	2400
624.0100	WATER	51	460
PROJECT TOTAL			2681

EROSION CONTROL SCHEDULE

STATION	LOCATION	QUANTITY	UNIT
15+75	30+45	39TH	10
32+00	45+37	39TH	10
100+45	104+80	SPRINGBROOK	10
108+10	112+00	SPRINGBROOK	10
200+00	203+25	ROUNDABOUT	10
PROJECT TOTAL			50

LANDMARK REFERENCE MONUMENT

STATION	OFF FEET	EA	EA
38+68	41T	1	1
PROJECT TOTAL			1

CONCRETE MEDIAN

STATION	LOCATION	QUANTITY	UNIT
15+75	30+45	39TH	1
32+00	45+37	39TH	1
100+45	104+80	SPRINGBROOK	1
108+10	112+00	SPRINGBROOK	1
PROJECT TOTAL			4

## SCHEDULE OF ITEMS

REVISED:

CONTRACT:  
20150210015PROJECT(S):  
3729-00-74FEDERAL ID(S):  
WISC 2015092

CONTRACTOR : \_\_\_\_\_

LINE NO	ITEM DESCRIPTION	APPROX. QUANTITY AND UNITS	UNIT PRICE		BID AMOUNT	
			DOLLARS	CTS	DOLLARS	CTS

## SECTION 0001 Roadway Items

0010	201.0105 Clearing	23.000 STA	.	.	.	.
0020	201.0120 Clearing	100.000 ID	.	.	.	.
0030	201.0205 Grubbing	23.000 STA	.	.	.	.
0040	201.0220 Grubbing	100.000 ID	.	.	.	.
0050	203.0100 Removing Small Pipe Culverts	7.000 EACH	.	.	.	.
0060	204.0100 Removing Pavement	2,373.000 SY	.	.	.	.
0070	204.0150 Removing Curb & Gutter	3,960.000 LF	.	.	.	.
0080	204.0170 Removing Fence	730.000 LF	.	.	.	.
0090	204.0180 Removing Delineators and Markers	3.000 EACH	.	.	.	.
0100	204.0195 Removing Concrete Bases	9.000 EACH	.	.	.	.

## SCHEDULE OF ITEMS

REVISED:

CONTRACT:  
20150210015PROJECT(S):  
3729-00-74FEDERAL ID(S):  
WISC 2015092

CONTRACTOR : \_\_\_\_\_

LINE NO	ITEM DESCRIPTION	APPROX. QUANTITY AND UNITS	UNIT PRICE		BID AMOUNT	
			DOLLARS	CTS	DOLLARS	CTS
0110	204.0210 Removing Manholes	2.000 EACH	.	.	.	.
0120	204.0215 Removing Catch Basins	15.000 EACH	.	.	.	.
0130	204.0220 Removing Inlets	1.000 EACH	.	.	.	.
0140	204.0245 Removing Storm Sewer (size) 01. 12-Inch	196.000 LF	.	.	.	.
0150	204.0245 Removing Storm Sewer (size) 02. 15-Inch	404.000 LF	.	.	.	.
0160	204.0245 Removing Storm Sewer (size) 03. 18-Inch	310.000 LF	.	.	.	.
0170	204.9035.S Removing (item description) 01. Riprap	50.000 CY	.	.	.	.
0180	204.9060.S Removing (item description) 01. Apron Endwall	5.000 EACH	.	.	.	.
0190	204.9090.S Removing (item description) 01. Landscaping Bricks	158.000 LF	.	.	.	.
0200	205.0100 Excavation Common	34,400.000 CY	.	.	.	.
0210	205.0400 Excavation Marsh	5.000 CY	.	.	.	.

## SCHEDULE OF ITEMS

REVISED:

CONTRACT:  
20150210015PROJECT(S):  
3729-00-74FEDERAL ID(S):  
WISC 2015092

CONTRACTOR : \_\_\_\_\_

LINE NO	ITEM DESCRIPTION	APPROX. QUANTITY AND UNITS	UNIT PRICE		BID AMOUNT	
			DOLLARS	CTS	DOLLARS	CTS
0220	208.1100 Select Borrow	527.000 CY	.	.	.	.
0230	305.0110 Base Aggregate Dense 3/4-Inch	13.000 TON	.	.	.	.
0240	305.0120 Base Aggregate Dense 1 1/4-Inch	11,947.000 TON	.	.	.	.
0250	310.0110 Base Aggregate Open Graded	150.000 TON	.	.	.	.
0260	312.0110 Select Crushed Material	23,200.000 TON	.	.	.	.
0270	405.0100 Coloring Concrete Red	370.000 CY	.	.	.	.
0280	415.0070 Concrete Pavement 7-Inch	20,160.000 SY	.	.	.	.
0290	416.0260 Concrete Driveway HES 6-Inch	329.000 SY	.	.	.	.
0300	416.0280 Concrete Driveway HES 8-Inch	190.000 SY	.	.	.	.
0310	416.0508 Concrete Roundabout Truck Apron 8-Inch	340.000 SY	.	.	.	.
0320	440.4410.S Incentive IRI Ride	1,430.000 DOL	.	.	.	.

## SCHEDULE OF ITEMS

REVISED:

CONTRACT:  
20150210015PROJECT(S):  
3729-00-74FEDERAL ID(S):  
WISC 2015092

CONTRACTOR : \_\_\_\_\_

LINE NO	ITEM DESCRIPTION	APPROX. QUANTITY AND UNITS	UNIT PRICE		BID AMOUNT	
			DOLLARS	CTS	DOLLARS	CTS
0330	455.0120 Asphaltic Material PG64-28	120.000 TON	.	.	.	.
0340	455.0605 Tack Coat	1,245.000 GAL	.	.	.	.
0350	460.1103 HMA Pavement Type E-3	2,232.000 TON	.	.	.	.
0360	460.2000 Incentive Density HMA Pavement	1,400.000 DOL	.	.	.	.
0370	465.0120 Asphaltic Surface Driveways and Field Entrances	105.000 TON	.	.	.	.
0380	522.1015 Apron Endwalls for Culvert Pipe Reinforced Concrete 15-Inch	2.000 EACH	.	.	.	.
0390	522.1048 Apron Endwalls for Culvert Pipe Reinforced Concrete 48-Inch	1.000 EACH	.	.	.	.
0400	601.0205 Concrete Gutter 24-Inch	180.000 LF	.	.	.	.
0410	601.0405 Concrete Curb & Gutter 18-Inch Type A	240.000 LF	.	.	.	.
0420	601.0407 Concrete Curb & Gutter 18-Inch Type D	29.000 LF	.	.	.	.

## SCHEDULE OF ITEMS

REVISED:

CONTRACT:  
20150210015PROJECT(S):  
3729-00-74FEDERAL ID(S):  
WISC 2015092

CONTRACTOR : \_\_\_\_\_

LINE NO	ITEM DESCRIPTION	APPROX. QUANTITY AND UNITS	UNIT PRICE		BID AMOUNT	
			DOLLARS	CTS	DOLLARS	CTS
0440	601.0411 Concrete Curb & Gutter 30-Inch Type D	65.000 LF	.	.	.	.
0450	601.0580 Concrete Curb & Gutter 4-Inch Sloped 36-Inch Type R	320.000 LF	.	.	.	.
0460	602.0405 Concrete Sidewalk 4-Inch	24,600.000 SF	.	.	.	.
0470	602.0410 Concrete Sidewalk 5-Inch	68,725.000 SF	.	.	.	.
0480	602.0415 Concrete Sidewalk 6-Inch	2,160.000 SF	.	.	.	.
0490	602.0505 Curb Ramp Detectable Warning Field Yellow	668.000 SF	.	.	.	.
0500	606.0200 Riprap Medium	11.000 CY	.	.	.	.
0510	608.0324 Storm Sewer Pipe Reinforced Concrete Class III 24-Inch	2,409.000 LF	.	.	.	.
0520	608.0348 Storm Sewer Pipe Reinforced Concrete Class III 48-Inch	165.000 LF	.	.	.	.
0530	608.0412 Storm Sewer Pipe Reinforced Concrete Class IV 12-Inch	78.000 LF	.	.	.	.
0540	608.0415 Storm Sewer Pipe Reinforced Concrete Class IV 15-Inch	922.000 LF	.	.	.	.

## SCHEDULE OF ITEMS

REVISED:

CONTRACT:  
20150210015PROJECT(S):  
3729-00-74FEDERAL ID(S):  
WISC 2015092

CONTRACTOR : \_\_\_\_\_

LINE NO	ITEM DESCRIPTION	APPROX. QUANTITY AND UNITS	UNIT PRICE		BID AMOUNT	
			DOLLARS	CTS	DOLLARS	CTS
0550	611.0420 Reconstructing Manholes	EACH 6.000	.		.	
0560	611.0530 Manhole Covers Type J	EACH 18.000	.		.	
0570	611.0624 Inlet Covers Type H	EACH 39.000	.		.	
0580	611.0639 Inlet Covers Type H-S	EACH 19.000	.		.	
0590	611.1230 Catch Basins 2x3-FT	EACH 57.000	.		.	
0600	611.2004 Manholes 4-FT Diameter	EACH 16.000	.		.	
0610	611.2007 Manholes 7-FT Diameter	EACH 2.000	.		.	
0620	611.2008 Manholes 8-FT Diameter	EACH 1.000	.		.	
0630	611.8110 Adjusting Manhole Covers	EACH 4.000	.		.	
0640	611.8120.S Cover Plates Temporary	EACH 10.000	.		.	
0650	612.0106 Pipe Underdrain 6-Inch	LF 600.000	.		.	

## SCHEDULE OF ITEMS

REVISED:

CONTRACT:  
20150210015PROJECT(S):  
3729-00-74FEDERAL ID(S):  
WISC 2015092

CONTRACTOR : \_\_\_\_\_

LINE NO	ITEM DESCRIPTION	APPROX. QUANTITY AND UNITS	UNIT PRICE		BID AMOUNT	
			DOLLARS	CTS	DOLLARS	CTS
0660	612.0600 Underdrain Trench	600.000 LF	.	.	.	.
0670	619.1000 Mobilization	1.000 EACH	.	.	.	.
0680	620.0200 Concrete Median Blunt Nose	240.000 SF	.	.	.	.
0690	620.0300 Concrete Median Sloped Nose	750.000 SF	.	.	.	.
0700	621.0100 Landmark Reference Monuments	1.000 EACH	.	.	.	.
0710	623.0200 Dust Control Surface Treatment	27,400.000 SY	.	.	.	.
0720	624.0100 Water	598.100 MGAL	.	.	.	.
0730	625.0100 Topsoil	23,260.000 SY	.	.	.	.
0740	627.0200 Mulching	36,160.000 SY	.	.	.	.
0750	628.1504 Silt Fence	2,960.000 LF	.	.	.	.
0760	628.1520 Silt Fence Maintenance	2,960.000 LF	.	.	.	.



## SCHEDULE OF ITEMS

REVISED:

CONTRACT:  
20150210015PROJECT(S):  
3729-00-74FEDERAL ID(S):  
WISC 2015092

CONTRACTOR : \_\_\_\_\_

LINE NO	ITEM DESCRIPTION	APPROX. QUANTITY AND UNITS	UNIT PRICE		BID AMOUNT	
			DOLLARS	CTS	DOLLARS	CTS
0770	628.1905 Mobilizations Erosion Control	10.000 EACH	.		.	
0780	628.1910 Mobilizations Emergency Erosion Control	6.000 EACH	.		.	
0790	628.2004 Erosion Mat Class I Type B	1,550.000 SY	.		.	
0800	628.7005 Inlet Protection Type A	41.000 EACH	.		.	
0810	628.7015 Inlet Protection Type C	40.000 EACH	.		.	
0820	628.7020 Inlet Protection Type D	18.000 EACH	.		.	
0830	628.7504 Temporary Ditch Checks	113.000 LF	.		.	
0840	628.7555 Culvert Pipe Checks	4.000 EACH	.		.	
0850	629.0210 Fertilizer Type B	7.500 CWT	.		.	
0860	630.0140 Seeding Mixture No. 40	236.000 LB	.		.	
0870	630.0160 Seeding Mixture No. 60	2.000 LB	.		.	

## SCHEDULE OF ITEMS

REVISED:

CONTRACT:  
20150210015PROJECT(S):  
3729-00-74FEDERAL ID(S):  
WISC 2015092

CONTRACTOR : \_\_\_\_\_

LINE NO	ITEM DESCRIPTION	APPROX. QUANTITY AND UNITS	UNIT PRICE		BID AMOUNT	
			DOLLARS	CTS	DOLLARS	CTS
0880	630.0200 Seeding Temporary	630.000 LB	.		.	
0890	631.0300 Sod Water	88.200 MGAL	.		.	
0900	631.1000 Sod Lawn	7,800.000 SY	.		.	
0910	632.0101 Trees (species) (size) (root) 01. Sienna Glen Maple B&B 2. 5" Cal	7.000 EACH	.		.	
0920	632.0101 Trees (species) (size) (root) 02. State Street Miyabe Maple B&B 3.0" Cal	5.000 EACH	.		.	
0930	632.0101 Trees (species) (size) (root) 03. Autumn Brilliance Serviceberry B&B 2.0" Cal	7.000 EACH	.		.	
0940	632.0101 Trees (species) (size) (root) 04. Japanese Tree Lilac B&B 2.5" Cal	6.000 EACH	.		.	
0950	632.0101 Trees (species) (size) (root) 05. Golden Glory Corneliancherry Dogwood B&B 6' Multi-Stem	1.000 EACH	.		.	
0960	632.0101 Trees (species) (size) (root) 06. Skyline Honeylocust B&B 3.0" Cal Burlapped, 3.0" Cal	12.000 EACH	.		.	

## SCHEDULE OF ITEMS

REVISED:

CONTRACT:  
20150210015PROJECT(S):  
3729-00-74FEDERAL ID(S):  
WISC 2015092

CONTRACTOR : \_\_\_\_\_

LINE NO	ITEM DESCRIPTION	APPROX. QUANTITY AND UNITS	UNIT PRICE		BID AMOUNT	
			DOLLARS	CTS	DOLLARS	CTS
0970	632.0101 Trees (species) (size) (root) 07. Kentucky Coffeetree B&B 2.5" Cal	EACH 6.000	.		.	
0980	632.0101 Trees (species) (size) (root) 08. Frontier Elm B&B 2.5" Cal 2.5" Cal	EACH 11.000	.		.	
0990	632.0201 Shrubs (species) (size) (root) 01. Tiger Eyes Cutleaf Staghorn Sumac #5 Cont 24" Min Ht	EACH 6.000	.		.	
1000	632.9101 Landscape Planting Surveillance and Care Cycles	EACH 20.000	.		.	
1010	637.2210 Signs Type II Reflective H	SF 723.610	.		.	
1020	638.2602 Removing Signs Type II	EACH 31.000	.		.	
1030	638.3000 Removing Small Sign Supports	EACH 27.000	.		.	
1040	642.5401 Field Office Type D	EACH 1.000	.		.	
1050	643.0100 Traffic Control (project) 01. 3729-00-04	EACH 1.000	.		.	
1060	643.0420 Traffic Control Barricades Type III	DAY 2,016.000	.		.	

## SCHEDULE OF ITEMS

REVISED:

CONTRACT:  
20150210015PROJECT(S):  
3729-00-74FEDERAL ID(S):  
WISC 2015092

CONTRACTOR : \_\_\_\_\_

LINE NO	ITEM DESCRIPTION	APPROX. QUANTITY AND UNITS	UNIT PRICE		BID AMOUNT	
			DOLLARS	CTS	DOLLARS	CTS
1070	643.0705 Traffic Control Warning Lights Type A	4,032.000 DAY	.	.	.	.
1080	643.0900 Traffic Control Signs	1,344.000 DAY	.	.	.	.
1090	643.2000 Traffic Control Detour (project) 01. 3729-00-04	1.000 EACH	.	.	.	.
1100	643.3000 Traffic Control Detour Signs	39,648.000 DAY	.	.	.	.
1110	645.0111 Geotextile Fabric Type DF Schedule A	450.000 SY	.	.	.	.
1120	645.0120 Geotextile Fabric Type HR	23.000 SY	.	.	.	.
1130	646.0106 Pavement Marking Epoxy 4-Inch	9,638.000 LF	.	.	.	.
1140	646.0126 Pavement Marking Epoxy 8-Inch	1,190.000 LF	.	.	.	.
1150	646.0156 Pavement Marking Epoxy 18-Inch	140.000 LF	.	.	.	.
1160	647.0156 Pavement Marking Arrows Epoxy Type 1	3.000 EACH	.	.	.	.
1170	647.0160 Pavement Marking Arrows Epoxy Type 2R	1.000 EACH	.	.	.	.

## SCHEDULE OF ITEMS

REVISED:

CONTRACT:  
20150210015PROJECT(S):  
3729-00-74FEDERAL ID(S):  
WISC 2015092

CONTRACTOR : \_\_\_\_\_

LINE NO	ITEM DESCRIPTION	APPROX. QUANTITY AND UNITS	UNIT PRICE		BID AMOUNT	
			DOLLARS	CTS	DOLLARS	CTS
1180	647.0166 Pavement Marking Arrows Epoxy Type 2	1.000 EACH	.		.	
1190	647.0170 Pavement Marking Arrows Epoxy Type 3R	2.000 EACH	.		.	
1200	647.0176 Pavement Marking Arrows Epoxy Type 3	1.000 EACH	.		.	
1210	647.0206 Pavement Marking Arrows Bike Lane Epoxy	14.000 EACH	.		.	
1220	647.0306 Pavement Marking Symbols Bike Lane Epoxy	14.000 EACH	.		.	
1230	647.0356 Pavement Marking Words Epoxy	7.000 EACH	.		.	
1240	647.0456 Pavement Marking Curb Epoxy	583.000 LF	.		.	
1250	647.0566 Pavement Marking Stop Line Epoxy 18-Inch	16.000 LF	.		.	
1260	647.0606 Pavement Marking Island Nose Epoxy	10.000 EACH	.		.	
1270	647.0726 Pavement Marking Diagonal Epoxy 12-Inch	194.000 LF	.		.	
1280	647.0766 Pavement Marking Crosswalk Epoxy 6-Inch	861.000 LF	.		.	

## SCHEDULE OF ITEMS

REVISED:

CONTRACT:  
20150210015PROJECT(S):  
3729-00-74FEDERAL ID(S):  
WISC 2015092

CONTRACTOR : \_\_\_\_\_

LINE NO	ITEM DESCRIPTION	APPROX. QUANTITY AND UNITS	UNIT PRICE		BID AMOUNT	
			DOLLARS	CTS	DOLLARS	CTS
1290	650.4000 Construction Staking Storm Sewer	80.000 EACH	.		.	
1300	650.4500 Construction Staking Subgrade	7,170.000 LF	.		.	
1310	650.5500 Construction Staking Curb Gutter and Curb & Gutter	100.000 LF	.		.	
1320	650.7000 Construction Staking Concrete Pavement	7,170.000 LF	.		.	
1330	650.9910 Construction Staking Supplemental Control (project) 01. 3729-00-04	LUMP	LUMP		.	
1340	650.9920 Construction Staking Slope Stakes	6,840.000 LF	.		.	
1350	652.0225 Conduit Rigid Nonmetallic Schedule 40 2-Inch	8,025.000 LF	.		.	
1360	653.0105 Pull Boxes Steel 12x24-Inch	4.000 EACH	.		.	
1370	653.0140 Pull Boxes Steel 24x42-Inch	1.000 EACH	.		.	
1380	653.0145 Pull Boxes Steel 24x48-Inch	1.000 EACH	.		.	
1390	653.0905 Removing Pull Boxes	15.000 EACH	.		.	

## SCHEDULE OF ITEMS

REVISED:

CONTRACT:  
20150210015PROJECT(S):  
3729-00-74FEDERAL ID(S):  
WISC 2015092

CONTRACTOR : \_\_\_\_\_

LINE NO	ITEM DESCRIPTION	APPROX. QUANTITY AND UNITS	UNIT PRICE		BID AMOUNT	
			DOLLARS	CTS	DOLLARS	CTS
1400	654.0101 Concrete Bases Type 1	82.000 EACH	.		.	
1410	654.0217 Concrete Control Cabinet Bases Type 9 Special	1.000 EACH	.		.	
1420	655.0620 Electrical Wire Lighting 8 AWG	8,025.000 LF	.		.	
1430	655.0625 Electrical Wire Lighting 6 AWG	14,350.000 LF	.		.	
1440	655.0630 Electrical Wire Lighting 4 AWG	17,560.000 LF	.		.	
1450	655.0635 Electrical Wire Lighting 2 AWG	22,434.000 LF	.		.	
1460	655.0640 Electrical Wire Lighting 1 AWG	18.000 LF	.		.	
1470	656.0400 Electrical Service Main Lugs Only Meter Pedestal (location) Control Cabinet A	LUMP	LUMP		.	
1480	659.0802 Plaques Sequence Identification	83.000 EACH	.		.	
1490	659.2130 Lighting Control Cabinets 120/240 30-Inch	1.000 EACH	.		.	

## SCHEDULE OF ITEMS

REVISED:

CONTRACT:  
20150210015PROJECT(S):  
3729-00-74FEDERAL ID(S):  
WISC 2015092

CONTRACTOR : \_\_\_\_\_

LINE NO	ITEM DESCRIPTION	APPROX. QUANTITY AND UNITS	UNIT PRICE		BID AMOUNT	
			DOLLARS	CTS	DOLLARS	CTS
1500	690.0150 Sawing Asphalt	750.000 LF	.	.	.	.
1510	690.0250 Sawing Concrete	290.000 LF	.	.	.	.
1520	715.0415 Incentive Strength Concrete Pavement	1,180.000 DOL	.	.	.	.
1530	ASP.1T0A On-the-Job Training Apprentice at \$5.00/HR	1,200.000 HRS	.	.	.	.
1540	ASP.1T0G On-the-Job Training Graduate at \$5. 00/HR	1,200.000 HRS	.	.	.	.
1550	SPV.0060 Special 01. Decorative 20-Ft Light Pole With Dual 95-Watt Led Luminaires	82.000 EACH	.	.	.	.
1560	SPV.0060 Special 02. Construction Staking Irrigation System	761.000 EACH	.	.	.	.
1570	SPV.0060 Special 03. Steel Sign Posts 9-Ft	2.000 EACH	.	.	.	.
1580	SPV.0060 Special 04. Steel Sign Posts 11-Ft	14.000 EACH	.	.	.	.
1590	SPV.0060 Special 05. Steel Sign Posts 13-Ft	19.000 EACH	.	.	.	.
1600	SPV.0060 Special 06. Steel Sign Posts 15-Ft	35.000 EACH	.	.	.	.



## SCHEDULE OF ITEMS

REVISED:

CONTRACT:  
20150210015PROJECT(S):  
3729-00-74FEDERAL ID(S):  
WISC 2015092

CONTRACTOR : \_\_\_\_\_

LINE NO	ITEM DESCRIPTION	APPROX. QUANTITY AND UNITS	UNIT PRICE		BID AMOUNT	
			DOLLARS	CTS	DOLLARS	CTS
1610	SPV.0060 Special 07. Butterfly Valve And Box 16-Inch	1.000 EACH	.		.	
1620	SPV.0060 Special 08. Butterfly Valve And Box 12-Inch	2.000 EACH	.		.	
1630	SPV.0060 Special 09. Auxiliary Hydrant Valve & Box 6-Inch	7.000 EACH	.		.	
1640	SPV.0060 Special 10. Hydrant	8.000 EACH	.		.	
1650	SPV.0060 Special 11. Water Service Fittings 2-Inch	1.000 EACH	.		.	
1660	SPV.0060 Special 12. Install Outside Drop On Sanitary Sewer Manhole	1.000 EACH	.		.	
1670	SPV.0060 Special 13. Construction Staking Sanitary Sewer	4.000 EACH	.		.	
1680	SPV.0060 Special 14. Construction Staking Water Main	19.000 EACH	.		.	
1690	SPV.0060 Special 15. External Manhole Seal	32.000 EACH	.		.	
1700	SPV.0060 Special 16. Construction Staking Ada Curb Ramp	32.000 EACH	.		.	
1710	SPV.0090 Special 01. Construction Staking Concrete Sidewalk	6,840.000 LF	.		.	

## SCHEDULE OF ITEMS

REVISED:

CONTRACT:  
20150210015PROJECT(S):  
3729-00-74FEDERAL ID(S):  
WISC 2015092

CONTRACTOR : \_\_\_\_\_

LINE NO	ITEM DESCRIPTION	APPROX. QUANTITY AND UNITS	UNIT PRICE		BID AMOUNT	
			DOLLARS	CTS	DOLLARS	CTS
1720	SPV.0090 Special 02. Water Main 16-Inch	6.000 LF	.	.	.	.
1730	SPV.0090 Special 03. Water Main 12-Inch	642.000 LF	.	.	.	.
1740	SPV.0090 Special 04. Hydrant Lead 6-Inch	104.000 LF	.	.	.	.
1750	SPV.0090 Special 05. Water Service 2-Inch	42.000 LF	.	.	.	.
1760	SPV.0090 Special 06. Sanitary Sewer 8-Inch	964.000 LF	.	.	.	.
1770	SPV.0090 Special 07. Test Rolling	7,170.000 LF	.	.	.	.
1780	SPV.0105 Special 01. Irrigation System	LUMP	LUMP	.	.	.
1790	SPV.0105 Special 02. Removing Traffic Signals	LUMP	LUMP	.	.	.
1800	SPV.0105 Special 03. Activated Flashing Led Sign Unit Sta 27+50	LUMP	LUMP	.	.	.
1810	SPV.0105 Special 04. Activated Flashing Led Sign Unit Sta 35+00	LUMP	LUMP	.	.	.
1820	SPV.0105 Special 05. Activated Flashing Led Sign Unit Sta 103+00	LUMP	LUMP	.	.	.

SCHEDULE OF ITEMS

REVISED:

CONTRACT:  
20150210015

PROJECT(S):  
3729-00-74

FEDERAL ID(S):  
WISC 2015092

CONTRACTOR : \_\_\_\_\_

LINE NO	ITEM DESCRIPTION	APPROX. QUANTITY AND UNITS	UNIT PRICE		BID AMOUNT	
			DOLLARS	CTS	DOLLARS	CTS
1830	SPV.0105 Special 06. Activated Flashing Led Sign Unit Sta 112+70	LUMP	LUMP			.
1840	SPV.0105 Special 07. Base Station Control Unit	LUMP	LUMP			.
1850	SPV.0105 Special 08. Construction Staking Lighting System	LUMP	LUMP			.
1860	SPV.0200 Special 01. Sanitary Manhole 48-Inch	VF	61.000	.		.
1870	416.0620 Drilled Dowel Bars	EACH	80.000	.		.
1880	SPV.0090 Special 08. Concrete Curb and Gutter 8.75-Inch Depth 30-Inch Type A	LF	12,200.000	.		.
	SECTION 0001 TOTAL					.
	TOTAL BID					.