



# Wisconsin Department of Transportation

July 2, 2015

**Division of Transportation Systems Development**

Bureau of Project Development  
 4802 Sheboygan Avenue, Rm 601  
 P O Box 7916  
 Madison, WI 53707-7916

Telephone: (608) 266-1631  
 Facsimile (FAX): (608) 266-8459

**NOTICE TO ALL CONTRACTORS:**

**Proposal #11: 3360-04-60  
 Slinger - Addison  
 Maple Avenue to W County Line  
 STH 175  
 Washington County**

**Letting of July 14, 2015**

This is Addendum No. 01, which provides for the following:

**Special Provisions**

Added Special Provisions	
Article No.	Description
23	Pavement Marking Grooved Preformed Thermoplastic Arrows Type 2, Item SPV. 0060.01; Words, Item SPV.0060.02; Yield Line Symbols 18-Inch, Item SPV.0060.03; Stop Line 18-Inch, Item SPV.0090.03

**Schedule of Items**

Revised Bid Item Quantities					
Bid Item	Item Description	Unit	Old Quantity	Revised Quantity	Proposal Total
648.0100	Locating No-Passing Zones	MI	21	10.50	10.50

Added Bid Item Quantities					
Bid Item	Item Description	Unit	Old Quantity	Revised Quantity	Proposal Total
SPV.0060.01	Pavement Marking Grooved Preformed Thermoplastic Arrows Type 2	Each	0	8	8
SPV.0060.02	Pavement Marking Grooved Preformed Thermoplastic Words	Each	0	8	8
SPV.0060.03	Pavement Marking Grooved Preformed Thermoplastic Yield Line Symbols 18-Inch	Each	0	11	11
SPV.0090.03	Pavement Marking Grooved Preformed Thermoplastic Stop Line 18-Inch	LF	0	958	958

<b>Deleted Bid Item Quantities</b>					
Bid Item	Item Description	Unit	Old Quantity	Revised Quantity	Proposal Total
647.0168	Pavement Marking Arrows Preformed Thermoplastic Type 2	Each	8	0	0
647.0358	Pavement Marking Words Preformed Thermoplastic	Each	8	0	0
647.0528	Pavement Marking Yield Line Symbols Preformed Thermoplastic 18-Inch	Each	11	0	0
647.0568	Pavement Marking Stop Line Preformed Thermoplastic 18-Inch	LF	958	0	0

**Plan Sheets**

<b>Revised Plan Sheets</b>	
Plan Sheet	Plan Sheet Title (brief description of changes to sheet)
20-37	Pavement Marking (revised Legend bid item descriptions)
98	Miscellaneous Quantities (revised quantity for Item 648.0100 Locating No-Passing Zones)
99	Miscellaneous Quantities (revised pavement marking bid item number and names)

The responsibility for notifying potential subcontractors and suppliers of these changes remains with the prime contractor.

Sincerely,

*Mike Coleman*

Proposal Development Specialist  
 Proposal Management Section

## ADDENDUM NO. 01

3360-04-60

July 2, 2015

### Special Provisions

23. **Pavement Marking Grooved Preformed Thermoplastic Arrows Type 2, Item SPV. 0060.01; Words, Item SPV.0060.02; Yield Line Symbols 18-Inch, Item SPV.0060.03; Stop Line 18-Inch, Item SPV.0090.03**

#### **A Description**

This special provision describes grooving the pavement surface, and furnishing and installing preformed thermoplastic pavement marking as shown on the plans, in accordance with section 647 of the standards specifications, and as hereinafter provided.

#### **B Materials**

Furnish 125 mils preformed thermoplastic pavement marking from the department's approved products list. If required, furnish sealant material recommended by the manufacturer.

#### **C Construction**

##### **C.1 General**

For quality assurance, provide the project engineer and the region's Marking Section evidence of manufacturer training in the proper placement and installation of preformed thermoplastic pavement marking.

Plane the grooved lines in accordance with the plan details. Use grooving equipment with a free-floating, independent cutting or grinding head. Plane a minimum number of passes to create a smooth groove.

##### **C.2 Groove Depth**

Cut the groove to a depth of 120 mils  $\pm$ 10 mils deep from the pavement surface or, if tined, from the high point of the tined surface. Measure depth using a straightedge placed perpendicular to the groove. The department may periodically check groove depths.

##### **C.3 Groove Width – Linear Markings**

Cut the groove 1-inch wider than the width of the thermoplastic.

##### **C.4 Groove Position**

Position the groove edge in accordance with the plan details.

##### **C.4.1 Linear Marking**

Groove at a minimum of 4-inches, but not greater than, 12-inches from both ends of the line segment. Achieve straight alignment with the grooving equipment.

##### **C.4.2 Special Marking**

Groove at a minimum of 4-inches from the perimeter of the special marking. Groove separate areas for Word Items.

##### **C.5 Groove Cleaning**

##### **C.5.1 Concrete**

Cooling the cutting head with water may be necessary for some applications and equipment. If cooling water is necessary, flush the groove immediately with water after cutting to remove any build-up of cement dust and water slurry. If this is not done, the slurry may harden in the groove.

If water is used in the grooving process, allow the groove to dry a minimum of 24 hours after groove cleaning, after removal of excess water, and prior to pavement marking application. Clean and dry the groove for proper application of the sealant, and placement of the pavement marking. Use a high-pressure air blower with at least 185 ft<sup>3</sup>/min air flow and 90 psi air pressure to clean the groove; use of the air blower does not decrease the amount of time required for the groove to dry.

### **C.5.2 Asphalt**

Use a high-pressure air blower with at least 185 ft<sup>3</sup>/min air flow and 90 psi air pressure to clean the groove.

Check for structural integrity in supporting grooving operations. If the structural integrity of the asphalt pavement is inadequate to support grooving operations, immediately notify the engineer.

### **C.6 Preformed Thermoplastic Application**

Preheat the surface if necessary based on manufacturer's recommendation.

Apply preformed thermoplastic in the groove as per manufacturer's recommendations. If manufacturer's recommendations require a sealant, apply a sealant lower than 91g/l VOC during the following period of time due to Volatile Organic Compound Limitations:

May 1 to September 30, both dates inclusive – the Southeast Region and the ozone non-attainment Northeast Region counties of Sheboygan, Manitowoc, and Kewaunee.

Use any sealant in the remainder counties and for the remainder of the year. The sealant must be wet.

### **D Measurement**

The department will measure Pavement Marking Grooved Preformed Thermoplastic by the unit, acceptably placed, or in length by the linear foot of tape placed in accordance with the contract and accepted.

### **E Payment**

The department will pay for measured quantities at the contract unit price under the following bid items:

ITEM NUMBER	DESCRIPTION	UNIT
SPV.0060.01	Pavement Marking Grooved Preformed Thermoplastic Arrows Type 2	Each
SPV.0060.02	Pavement Marking Grooved Preformed Thermoplastic Words	Each
SPV.0060.03	Pavement Marking Grooved Preformed Thermoplastic Yield Line Symbols 18-Inch	Each
SPV.0090.03	Pavement Marking Grooved Preformed Thermoplastic Stop Line 18-Inch	LF

Payment is full compensation for cleaning and preparing the pavement surface, furnishing and installing the material; and for furnishing all labor, tools, and equipment.

### **Schedule of Items**

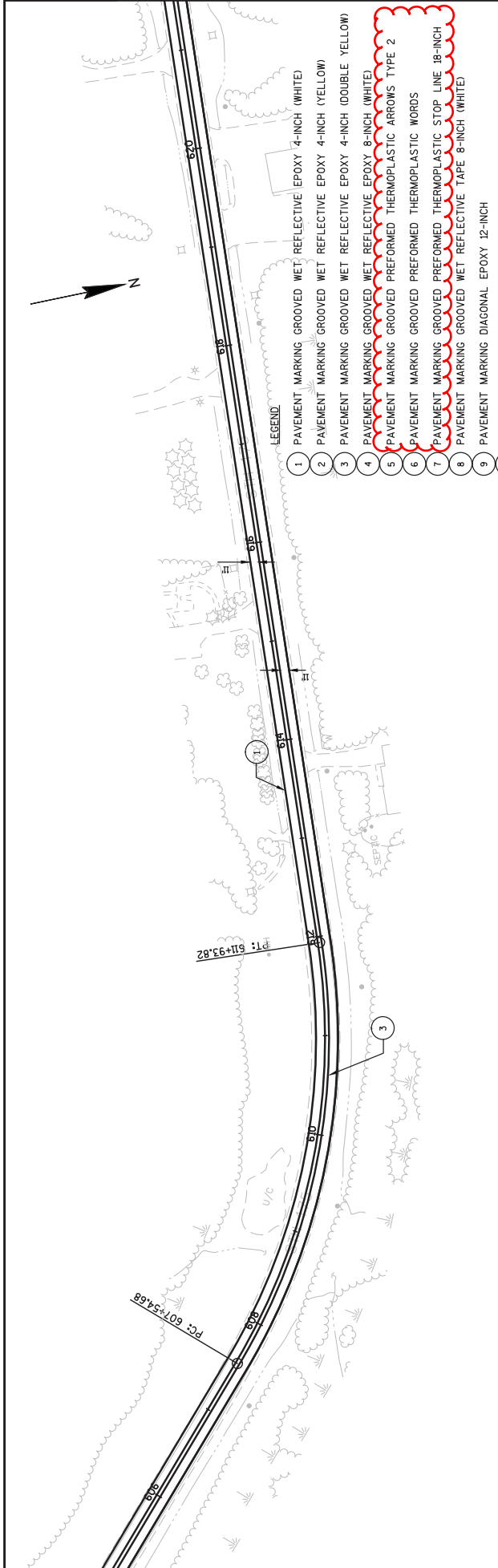
Attached, dated July 2, 2015, are the revised Schedule of Items Pages 6 and 7.

### **Plan Sheets**

The following 8½ x 11-inch sheets are attached and made part of the plans for this proposal:  
Revised: 20-37, 98, and 99.

END OF ADDENDUM



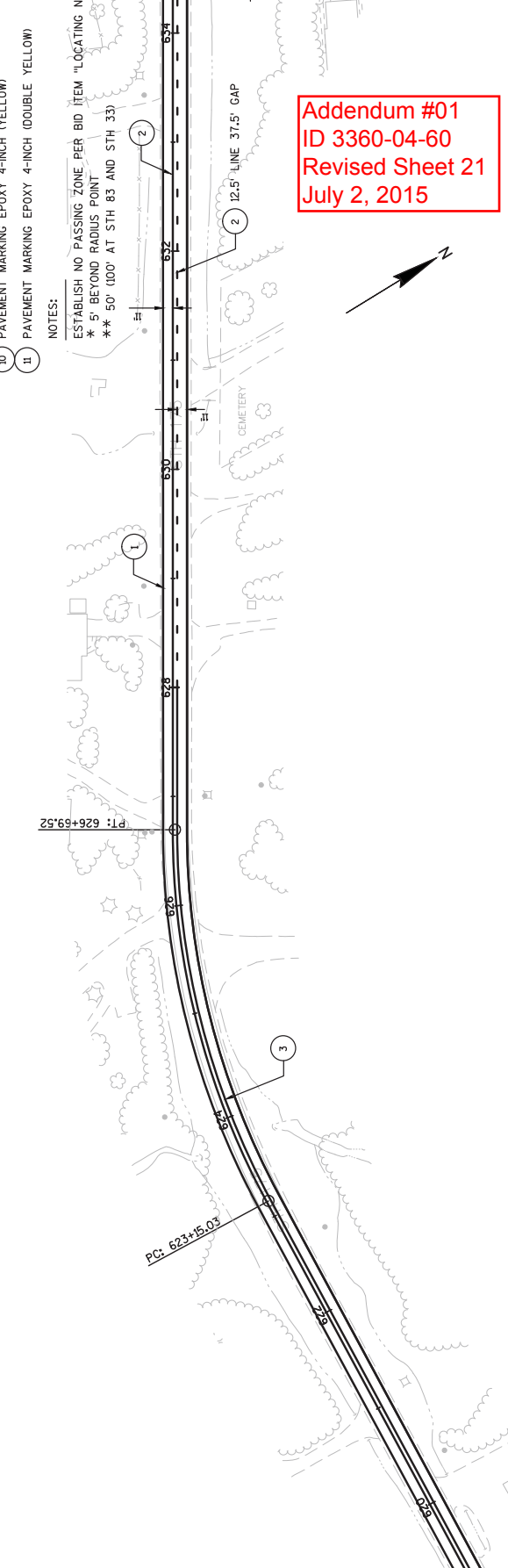


LEGEND:

- 1) PAVEMENT MARKING GROOVED WET REFLECTIVE EPOXY 4-INCH (WHITE)
- 2) PAVEMENT MARKING GROOVED WET REFLECTIVE EPOXY 4-INCH (YELLOW)
- 3) PAVEMENT MARKING GROOVED WET REFLECTIVE EPOXY 4-INCH (DOUBLE YELLOW)
- 4) PAVEMENT MARKING GROOVED WET REFLECTIVE EPOXY 8-INCH (WHITE)
- 5) PAVEMENT MARKING GROOVED PREFORMED THERMOPLASTIC ARROWS TYPE 2
- 6) PAVEMENT MARKING GROOVED PREFORMED THERMOPLASTIC WORDS
- 7) PAVEMENT MARKING GROOVED PREFORMED THERMOPLASTIC STOP LINE 18-INCH
- 8) PAVEMENT MARKING GROOVED WET REFLECTIVE TAPE 8-INCH (WHITE)
- 9) PAVEMENT MARKING DIAGONAL EPOXY 12-INCH
- 10) PAVEMENT MARKING EPOXY 4-INCH (YELLOW)
- 11) PAVEMENT MARKING EPOXY 4-INCH (DOUBLE YELLOW)

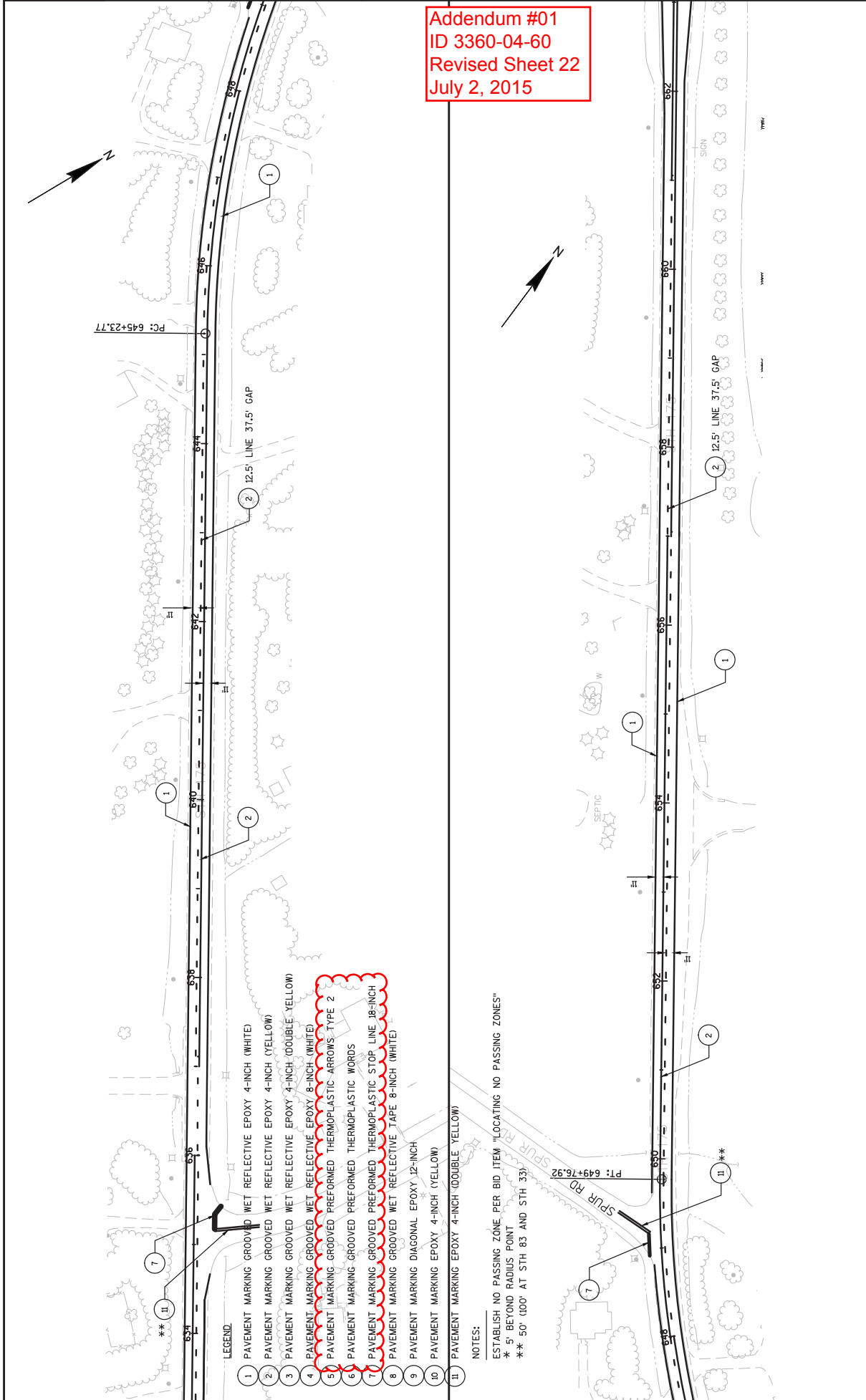
NOTES:

- ESTABLISH NO PASSING ZONE PER BID ITEM "LOCATING NO PASSING ZONES"
- \* 5' BEYOND RADIUS POINT
- \*\* 50' (100' AT STH 83 AND STH 33)



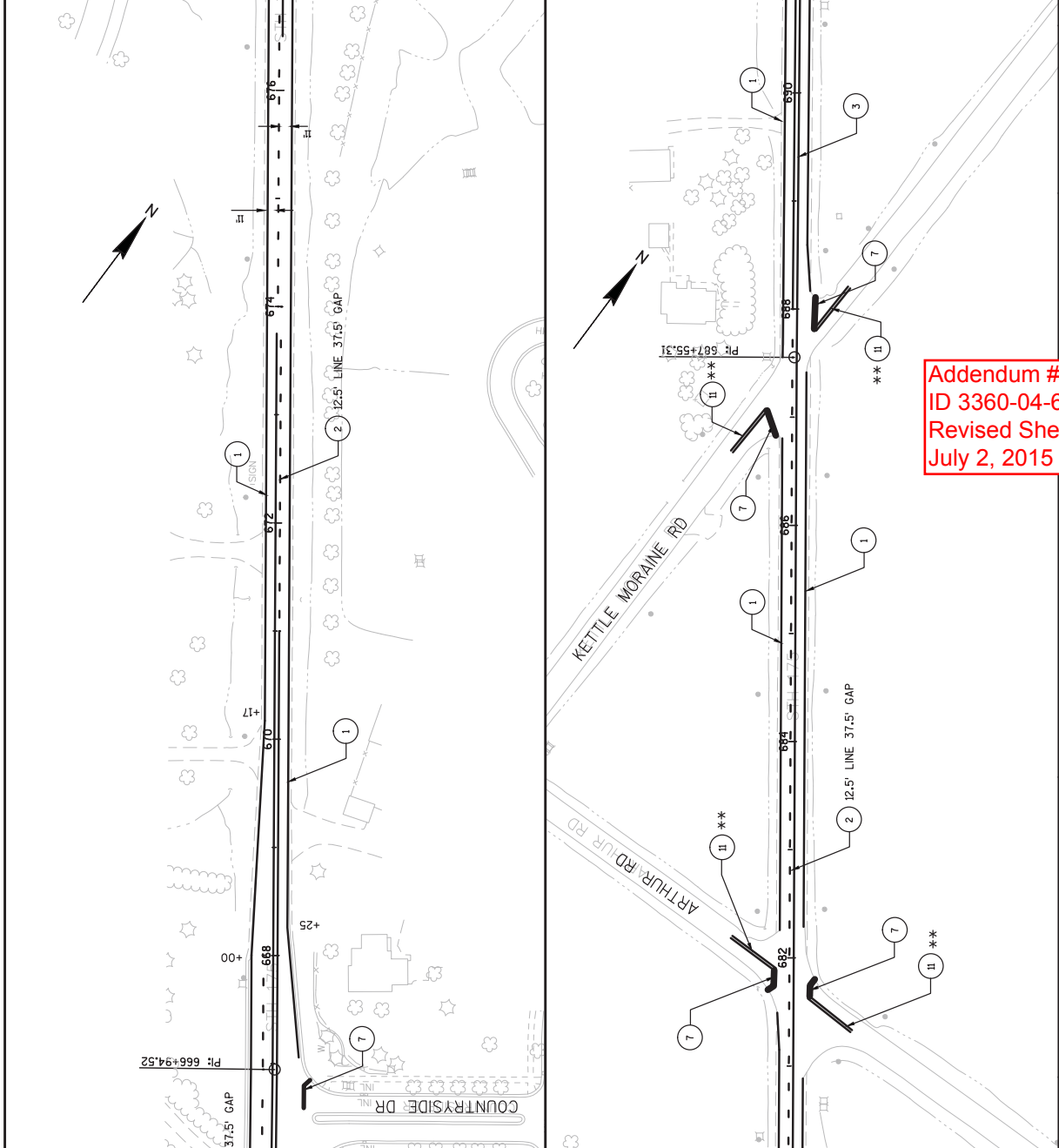
Addendum #01  
ID 3360-04-60  
Revised Sheet 21  
July 2, 2015

Addendum #01  
 ID 3360-04-60  
 Revised Sheet 22  
 July 2, 2015



- LEGEND**
- 1 PAVEMENT MARKING GROOVED WET REFLECTIVE EPOXY 4-INCH (WHITE)
  - 2 PAVEMENT MARKING GROOVED WET REFLECTIVE EPOXY 4-INCH (YELLOW)
  - 3 PAVEMENT MARKING GROOVED WET REFLECTIVE EPOXY 4-INCH (DOUBLE-YELLOW)
  - 4 PAVEMENT MARKING GROOVED WET REFLECTIVE EPOXY 8-INCH (WHITE)
  - 5 PAVEMENT MARKING GROOVED PREFORMED THERMOPLASTIC ARROWS, TYPE 2
  - 6 PAVEMENT MARKING GROOVED PREFORMED THERMOPLASTIC WORDS
  - 7 PAVEMENT MARKING GROOVED THERMOPLASTIC STOP LINE 18-INCH
  - 8 PAVEMENT MARKING GROOVED WET REFLECTIVE TAPE 8-INCH (WHITE)
  - 9 PAVEMENT MARKING DIAGONAL EPOXY 12-INCH
  - 10 PAVEMENT MARKING EPOXY 4-INCH (YELLOW)
  - 11 PAVEMENT MARKING EPOXY 4-INCH (DOUBLE YELLOW)
  - \*\* BEYOND RADIUS POINT
  - \*\* 50' (00' AT STH 83 AND STH 33)

**NOTES:**  
 ESTABLISH NO PASSING ZONE PER BID ITEM "LOCATING NO PASSING ZONES"  
 \* 5' BEYOND RADIUS POINT  
 \*\* 50' (00' AT STH 83 AND STH 33)



- LEGEND**
- 1 PAVEMENT MARKING GROOVED WET REFLECTIVE EPOXY 4-INCH (WHITE)
  - 2 PAVEMENT MARKING GROOVED WET REFLECTIVE EPOXY 4-INCH (YELLOW)
  - 3 PAVEMENT MARKING GROOVED WET REFLECTIVE EPOXY 4-INCH (DOUBLE YELLOW)
  - 4 PAVEMENT MARKING GROOVED WET REFLECTIVE EPOXY 8-INCH (WHITE)
  - 5 PAVEMENT MARKING GROOVED WET REFLECTIVE EPOXY 8-INCH (YELLOW)
  - 6 PAVEMENT MARKING GROOVED WET REFLECTIVE EPOXY 8-INCH (DOUBLE YELLOW)
  - 7 PAVEMENT MARKING GROOVED WET REFLECTIVE EPOXY 4-INCH (WHITE)
  - 8 PAVEMENT MARKING GROOVED WET REFLECTIVE TAPE 8-INCH (WHITE)
  - 9 PAVEMENT MARKING DIAGONAL EPOXY 12-INCH
  - 10 PAVEMENT MARKING EPOXY 4-INCH (YELLOW)
  - 11 PAVEMENT MARKING EPOXY 4-INCH (DOUBLE YELLOW)

- 12 PAVEMENT MARKING GROOVED THERMOPLASTIC STOP LINE 18-INCH
  - 13 PAVEMENT MARKING GROOVED THERMOPLASTIC STOP LINE 18-INCH
  - 14 PAVEMENT MARKING GROOVED WET REFLECTIVE TAPE 8-INCH (WHITE)
  - 15 PAVEMENT MARKING GROOVED WET REFLECTIVE TAPE 8-INCH (WHITE)
  - 16 PAVEMENT MARKING DIAGONAL EPOXY 12-INCH
  - 17 PAVEMENT MARKING EPOXY 4-INCH (YELLOW)
  - 18 PAVEMENT MARKING EPOXY 4-INCH (DOUBLE YELLOW)
- NOTES:**  
 ESTABLISH NO PASSING ZONE PER BID ITEM "LOCATING NO PASSING ZONES"  
 \* 5' BEYOND RADIUS POINT  
 \*\* 50' (100' AT STH 83 AND STH 33)

Addendum #01  
 ID 3360-04-60  
 Revised Sheet 23  
 July 2, 2015





**Addendum #01**  
**ID 3360-04-60**  
**Revised Sheet 25**  
**July 2, 2015**



PI: 731+70.89

② 12.5' LINE 37.5' GAP

①

②

- LEGEND:
- ① PAVEMENT MARKING GROOVED WET REFLECTIVE EPOXY 4-INCH (WHITE)
  - ② PAVEMENT MARKING GROOVED WET REFLECTIVE EPOXY 4-INCH (YELLOW)
  - ③ PAVEMENT MARKING GROOVED WET REFLECTIVE EPOXY 4-INCH (DOUBLE YELLOW)
  - ④ PAVEMENT MARKING GROOVED WET REFLECTIVE EPOXY 8-INCH (WHITE)
  - ⑤ PAVEMENT MARKING GROOVED PREFORMED THERMOPLASTIC ARROWS TYPE 2
  - ⑥ PAVEMENT MARKING GROOVED PREFORMED THERMOPLASTIC WORDS
  - ⑦ PAVEMENT MARKING GROOVED PREFORMED THERMOPLASTIC STOP LINE 18-INCH
  - ⑧ PAVEMENT MARKING GROOVED WET REFLECTIVE TAPE 8-INCH (WHITE)
  - ⑨ PAVEMENT MARKING DIAGONAL EPOXY 12-INCH
  - ⑩ PAVEMENT MARKING EPOXY 4-INCH (YELLOW)
  - ⑪ PAVEMENT MARKING EPOXY 4-INCH (DOUBLE YELLOW)

NOTES:

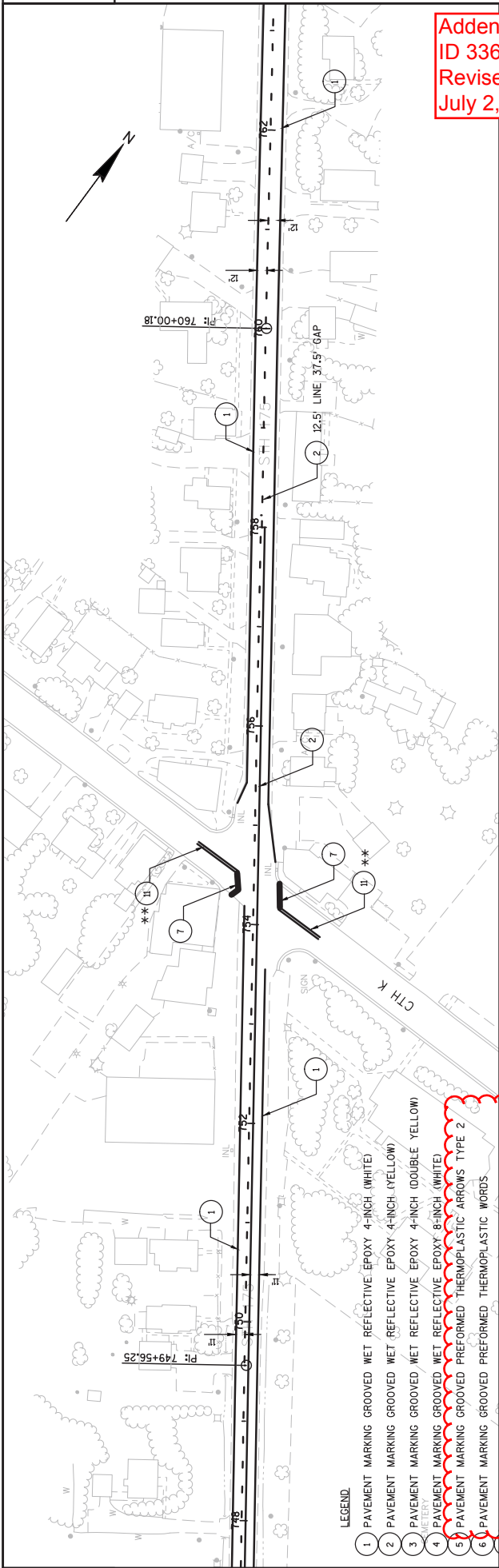
ESTABLISH NO PASSING ZONE PER BID ITEM "LOCATING NO PASSING ZONES"  
 \* 5' BEYOND RADIUS POINT  
 \*\* 50' 100' AT STH 83 AND STH 333



② 12.5' LINE 37.5' GAP

①

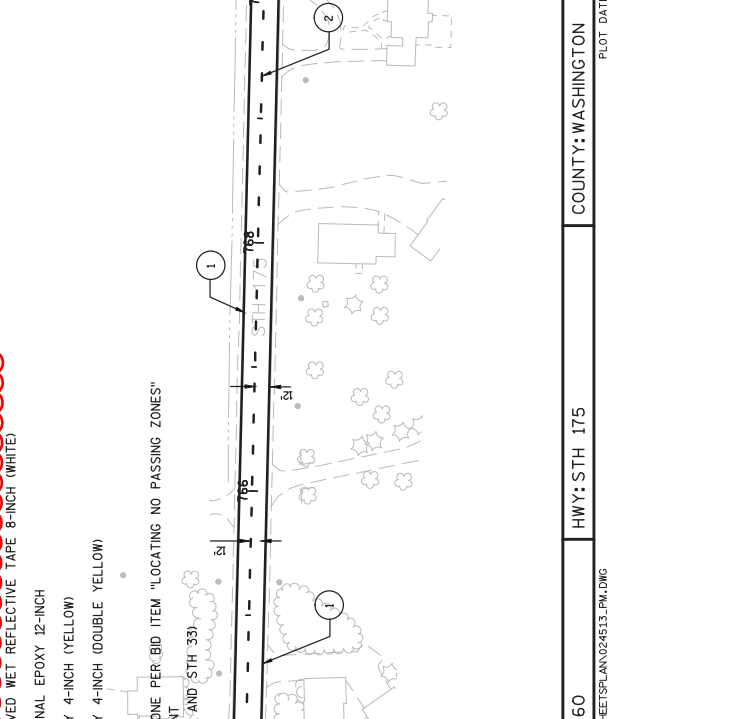
②

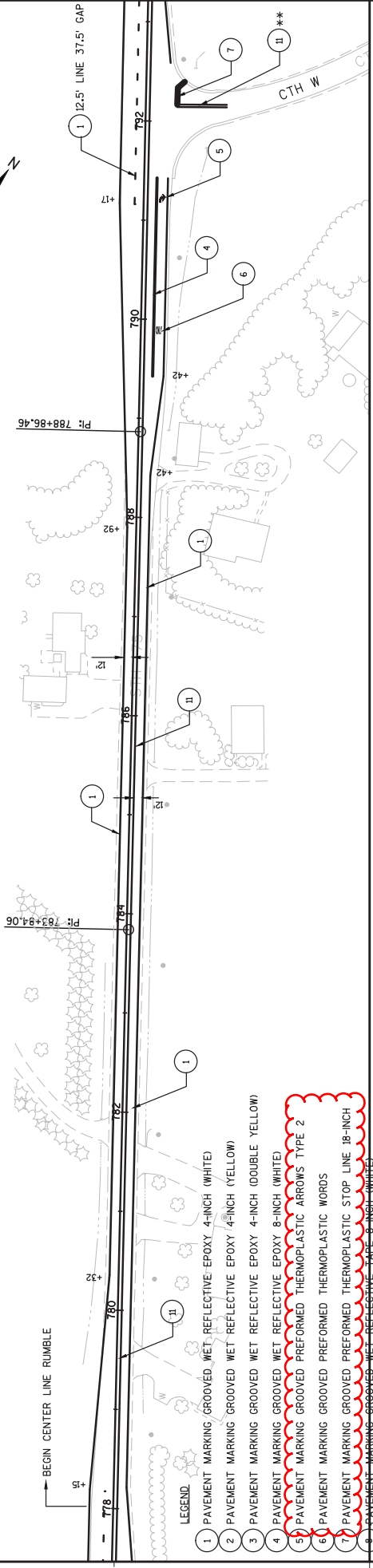


Addendum #01  
 ID 3360-04-60  
 Revised Sheet 26  
 July 2, 2015

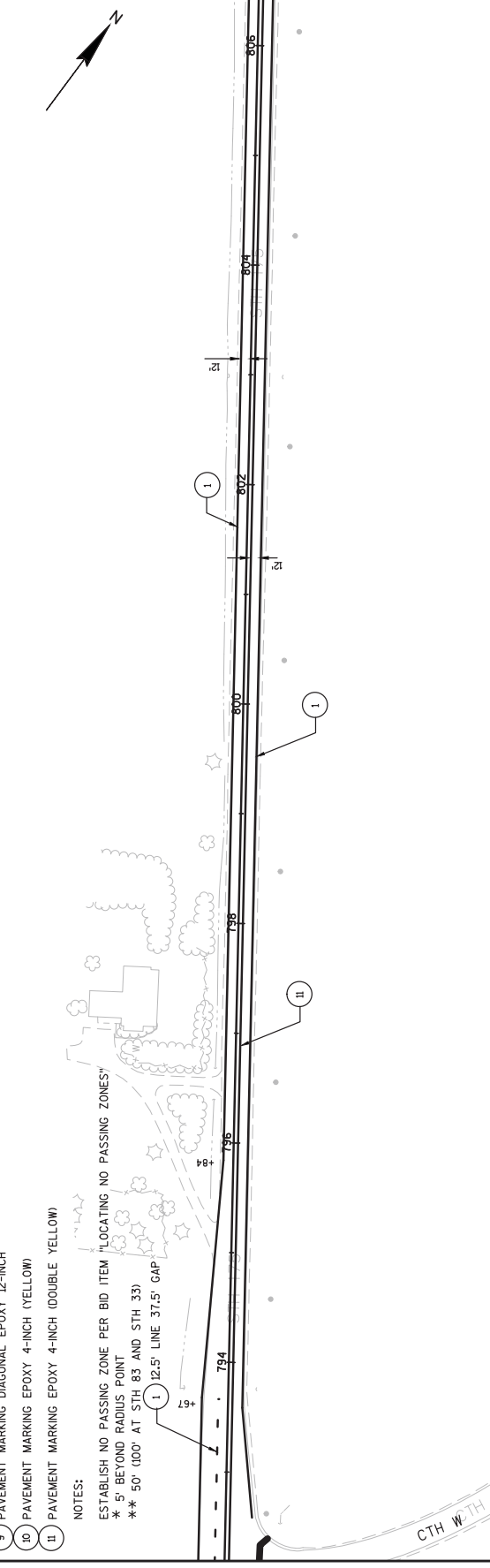
- LEGEND**
- 1 PAVEMENT MARKING GROOVED MET REFLECTIVE EPOXY 4-INCH (WHITE)
  - 2 PAVEMENT MARKING GROOVED MET REFLECTIVE EPOXY 4-INCH (YELLOW)
  - 3 PAVEMENT MARKING GROOVED MET REFLECTIVE EPOXY 4-INCH (DOUBLE YELLOW)
  - 4 PAVEMENT MARKING GROOVED MET REFLECTIVE EPOXY 8-INCH (WHITE)
  - 5 PAVEMENT MARKING GROOVED PREFORMED THERMOPLASTIC ARROWS TYPE 2
  - 6 PAVEMENT MARKING GROOVED PREFORMED THERMOPLASTIC WORDS
  - 7 PAVEMENT MARKING GROOVED PREFORMED THERMOPLASTIC STOP LINE 18-INCH
  - 8 PAVEMENT MARKING GROOVED MET REFLECTIVE TAPE 8-INCH (WHITE)
  - 9 PAVEMENT MARKING DIAGONAL EPOXY 12-INCH
  - 10 PAVEMENT MARKING EPOXY 4-INCH (YELLOW)
  - II PAVEMENT MARKING EPOXY 4-INCH (DOUBLE YELLOW)

**NOTES:**  
 ESTABLISH NO PASSING ZONE PER BID ITEM "LOCATING NO PASSING ZONES"  
 \* 5' BEYOND RADIUS POINT  
 \*\* 50' (100' AT STH 83 AND STH 33)





**Addendum #01**  
**ID 3360-04-60**  
**Revised Sheet 27**  
**July 2, 2015**



- LEGEND**
- 1 PAVEMENT MARKING GROOVED WET REFLECTIVE EPOXY 4-INCH (WHITE)
  - 2 PAVEMENT MARKING GROOVED WET REFLECTIVE EPOXY 4-INCH (YELLOW)
  - 3 PAVEMENT MARKING GROOVED WET REFLECTIVE EPOXY 4-INCH (DOUBLE YELLOW)
  - 4 PAVEMENT MARKING GROOVED WET REFLECTIVE EPOXY 8-INCH (WHITE)
  - 5 PAVEMENT MARKING GROOVED PREFORMED THERMOPLASTIC ARROWS TYPE 2
  - 6 PAVEMENT MARKING GROOVED PREFORMED THERMOPLASTIC WORDS
  - 7 PAVEMENT MARKING GROOVED PREFORMED THERMOPLASTIC STOP LINE 18-INCH
  - 8 PAVEMENT MARKING GROOVED WET REFLECTIVE EPOXY 8-INCH (WHITE)
  - 9 PAVEMENT MARKING DIAGONAL EPOXY 12-INCH
  - 10 PAVEMENT MARKING EPOXY 4-INCH (YELLOW)
  - 11 PAVEMENT MARKING EPOXY 4-INCH (DOUBLE YELLOW)

**NOTES:**

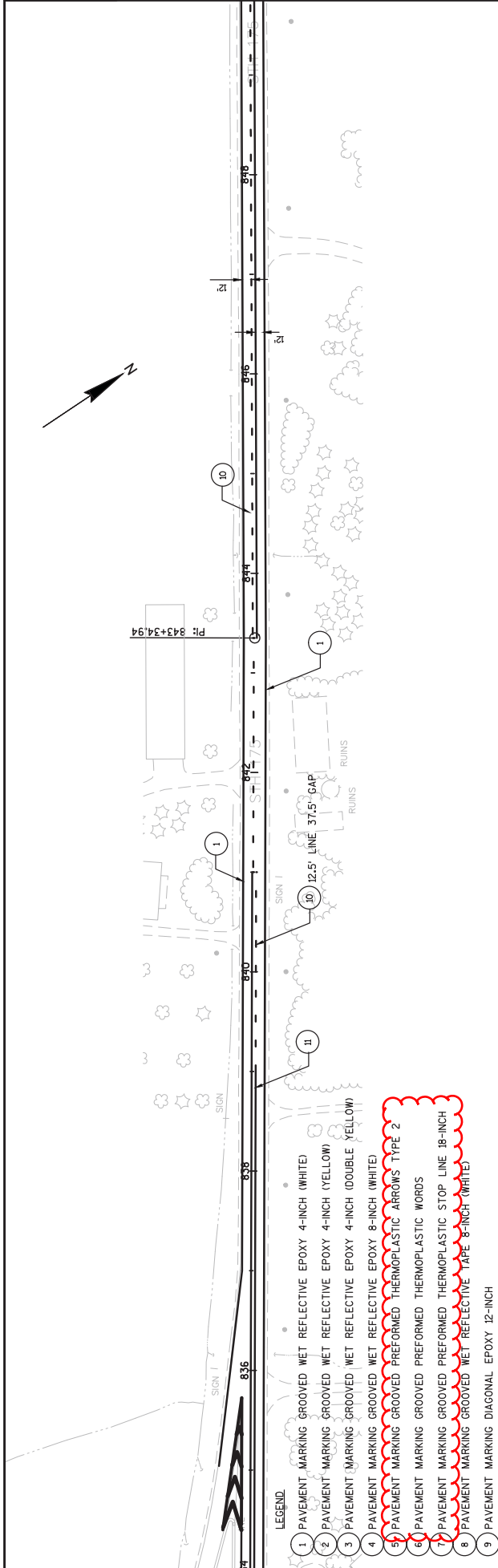
- ESTABLISH NO PASSING ZONE PER BID ITEM "LOCATING NO PASSING ZONES"
- \*\* 5' BEYOND RADIUS POINT
- \*\* 50' (100' AT STH 83 AND STH 33)
- \*\* 12.5' LINE 37.5' GAP



- 1 PAVEMENT MARKING GROOVED WET REFLECTIVE EPOXY 4-INCH (WHITE)
- 2 PAVEMENT MARKING GROOVED WET REFLECTIVE EPOXY 4-INCH (YELLOW)
- 3 PAVEMENT MARKING GROOVED WET REFLECTIVE EPOXY 4-INCH (DOUBLE YELLOW)
- 4 PAVEMENT MARKING GROOVED WET REFLECTIVE EPOXY 8-INCH (WHITE)
- 5 PAVEMENT MARKING GROOVED PREFORMED THERMOPLASTIC ARROWS TYPE 2
- 6 PAVEMENT MARKING GROOVED PREFORMED THERMOPLASTIC WORDS
- 7 PAVEMENT MARKING GROOVED PREFORMED THERMOPLASTIC STOP LINE 18-INCH
- 8 PAVEMENT MARKING GROOVED WET REFLECTIVE TAPE 18-INCH (WHITE)
- 9 PAVEMENT MARKING DIAGONAL EPOXY 12-INCH
- 10 PAVEMENT MARKING EPOXY 4-INCH (YELLOW)
- 11 PAVEMENT MARKING EPOXY 4-INCH (DOUBLE YELLOW)
- 12 PAVEMENT MARKING GROOVED PREFORMED THERMOPLASTIC YIELD LINE SYMBOLS 18-INCH

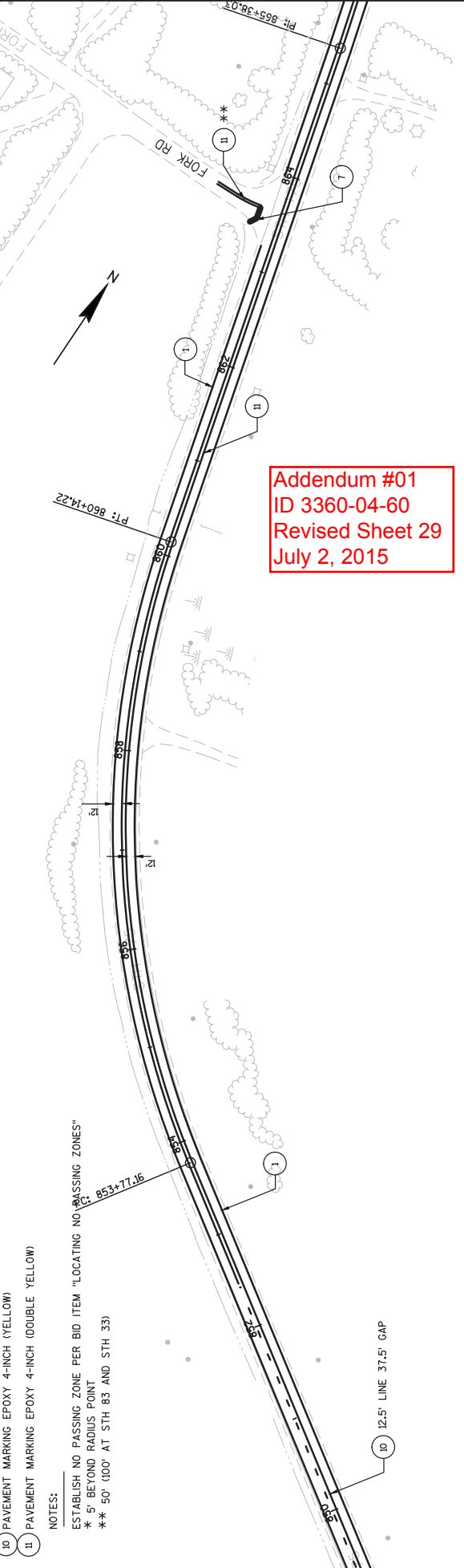
NOTES:  
ESTABLISH NO. PASSING ZONE PER BID ITEM "LOCATING NO. PASSING ZONES"  
\* 5' BEYOND RADIUS POINT  
\*\* 50' (OO' AT STH 83 AND STH 33)

PROJECT NO: 3360-04-60	HWY: STH 175	COUNTY: WASHINGTON	PAVEMENT MARKING	SHEET 28
FILE NAME: I:\NVP\GIS\3360\04\3360\04\03\PLAN\024537.PLDWG	DATE: 6/23/2015 10:27 AM	PLOT BY: ROTIER, STEVEN J	PLOT NAME:	WISDOT/CADD SHEET 44
				PLOT SCALE: 1:1 IN:100 FT

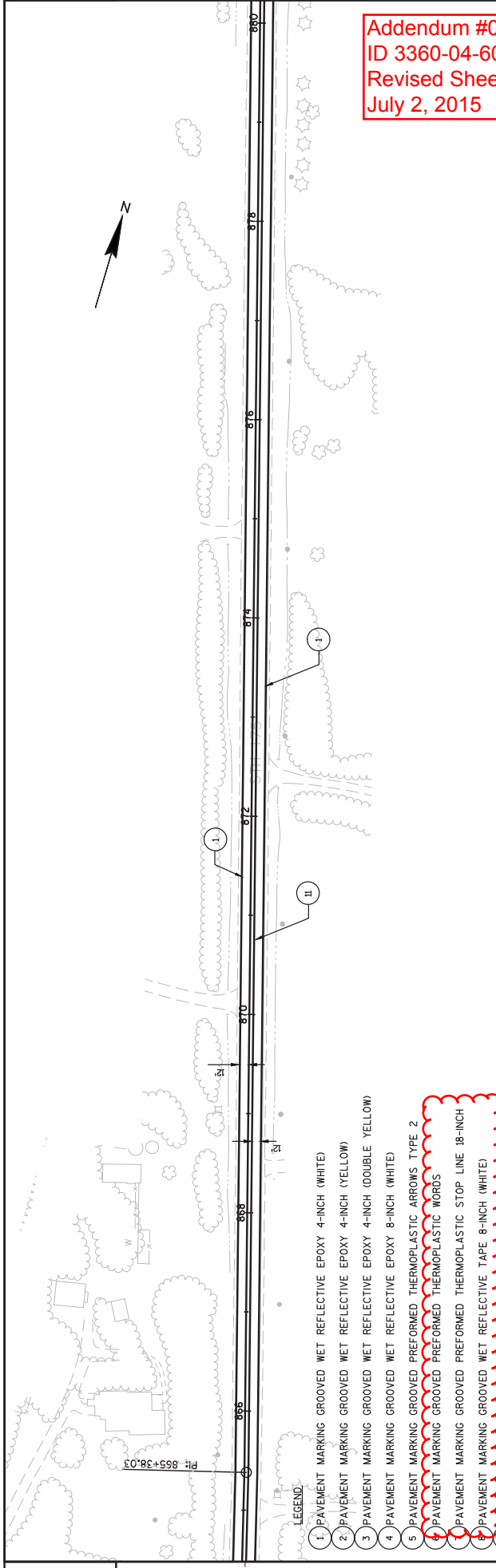


- LEGEND.**
- 1 PAVEMENT MARKING GROOVED WET REFLECTIVE EPOXY 4-INCH (WHITE)
  - 2 PAVEMENT MARKING GROOVED WET REFLECTIVE EPOXY 4-INCH (YELLOW)
  - 3 PAVEMENT MARKING GROOVED WET REFLECTIVE EPOXY 4-INCH (DOUBLE YELLOW)
  - 4 PAVEMENT MARKING GROOVED WET REFLECTIVE EPOXY 8-INCH (WHITE)
  - 5 PAVEMENT MARKING GROOVED PREFORMED THERMOPLASTIC ARROWS TYPE 2
  - 6 PAVEMENT MARKING GROOVED PREFORMED THERMOPLASTIC WORDS
  - 7 PAVEMENT MARKING GROOVED PREFORMED THERMOPLASTIC STOP LINE 18-INCH
  - 8 PAVEMENT MARKING GROOVED WET REFLECTIVE TAPE 8-INCH (WHITE)
  - 9 PAVEMENT MARKING DIAGONAL EPOXY 12-INCH
  - 10 PAVEMENT MARKING EPOXY 4-INCH (YELLOW)
  - II PAVEMENT MARKING EPOXY 4-INCH (DOUBLE YELLOW)

- NOTES:**
- ESTABLISH NO. PASSING ZONE PER BID ITEM "LOCATING NO. PASSING ZONES"
  - \* 5' BEYOND RADIUS POINT
  - \*\* 50' 100' AT STH 83 AND STH 333



Addendum #01  
ID 3360-04-60  
Revised Sheet 29  
July 2, 2015

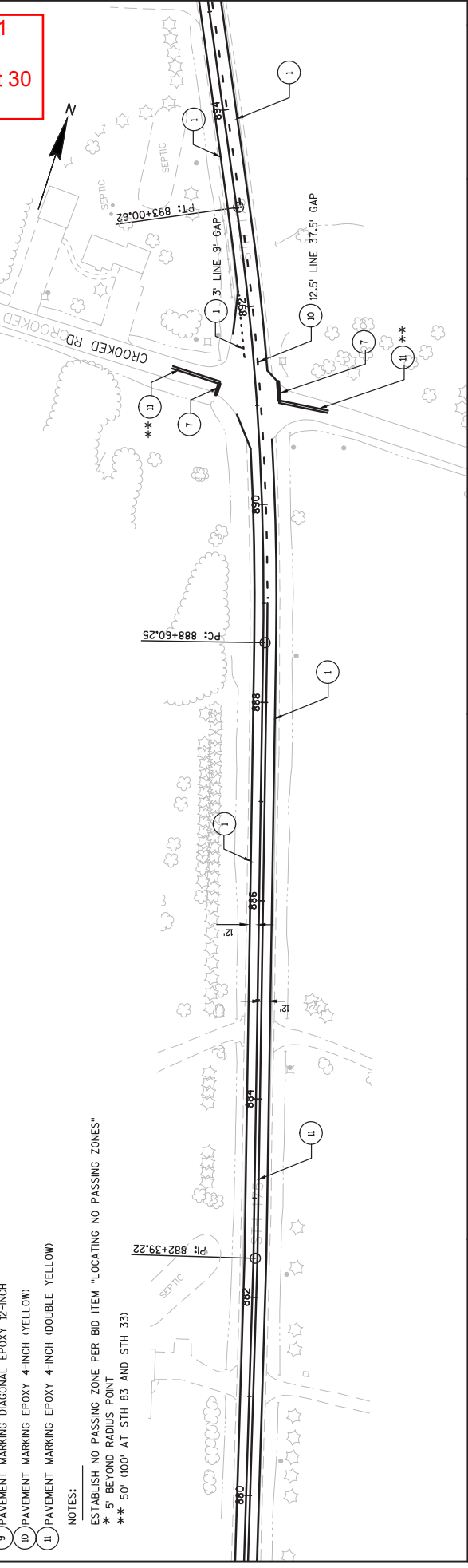


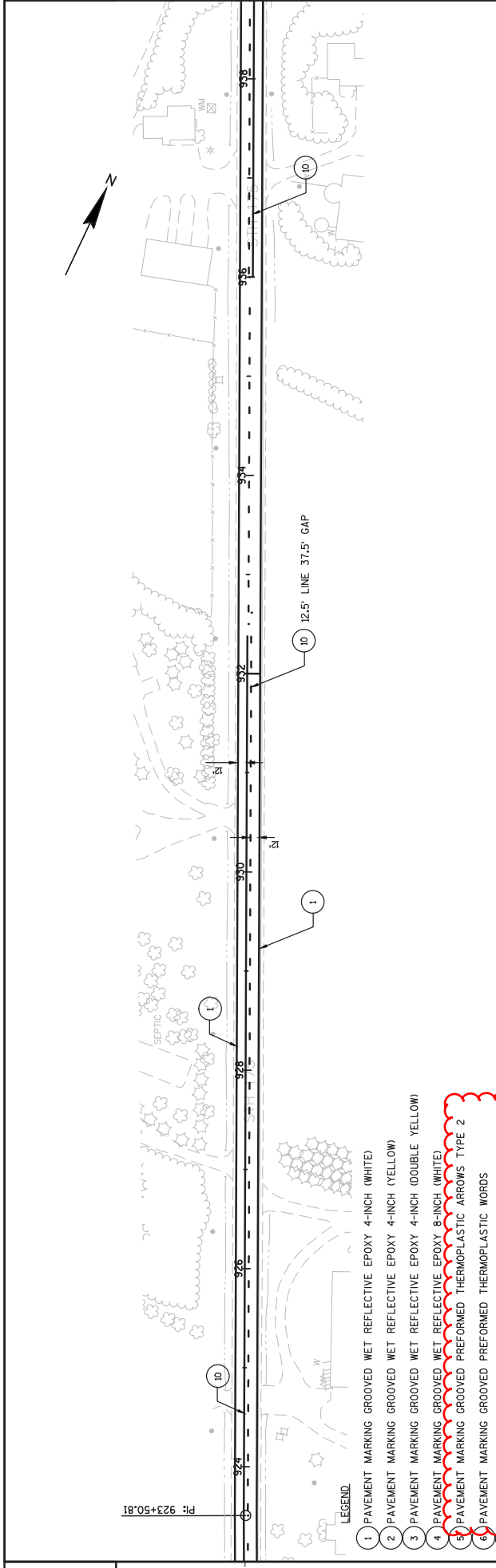
Addendum #01  
 ID 3360-04-60  
 Revised Sheet 30  
 July 2, 2015

- LEGEND:
- 1. PAVEMENT MARKING GROOVED WET REFLECTIVE EPOXY 4-INCH (WHITE)
  - 2. PAVEMENT MARKING GROOVED WET REFLECTIVE EPOXY 4-INCH (YELLOW)
  - 3. PAVEMENT MARKING GROOVED WET REFLECTIVE EPOXY 4-INCH (DOUBLE YELLOW)
  - 4. PAVEMENT MARKING GROOVED WET REFLECTIVE EPOXY 8-INCH (WHITE)
  - 5. PAVEMENT MARKING GROOVED PREFORMED THERMOPLASTIC ARROWS, TYPE 2
  - 6. PAVEMENT MARKING GROOVED PREFORMED THERMOPLASTIC WORDS
  - 7. PAVEMENT MARKING GROOVED PREFORMED THERMOPLASTIC STOP LINE 18-INCH
  - 8. PAVEMENT MARKING GROOVED WET REFLECTIVE TAPE 8-INCH (WHITE)
  - 9. PAVEMENT MARKING DIAGONAL EPOXY 12-INCH
  - 10. PAVEMENT MARKING EPOXY 4-INCH (YELLOW)
  - 11. PAVEMENT MARKING EPOXY 4-INCH (DOUBLE YELLOW)

NOTES:

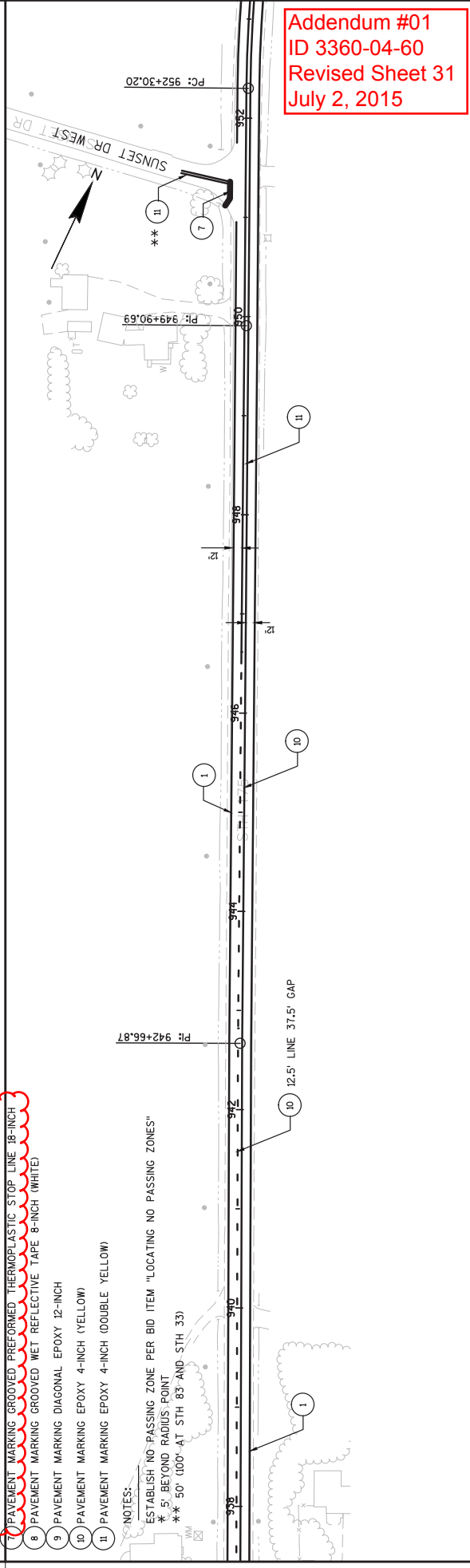
- ESTABLISH NO PASSING ZONE PER BID ITEM "LOCATING NO PASSING ZONES"
- \* 5' BEYOND RADIUS POINT
- \*\* 50' (100' AT STH 83 AND STH 33)





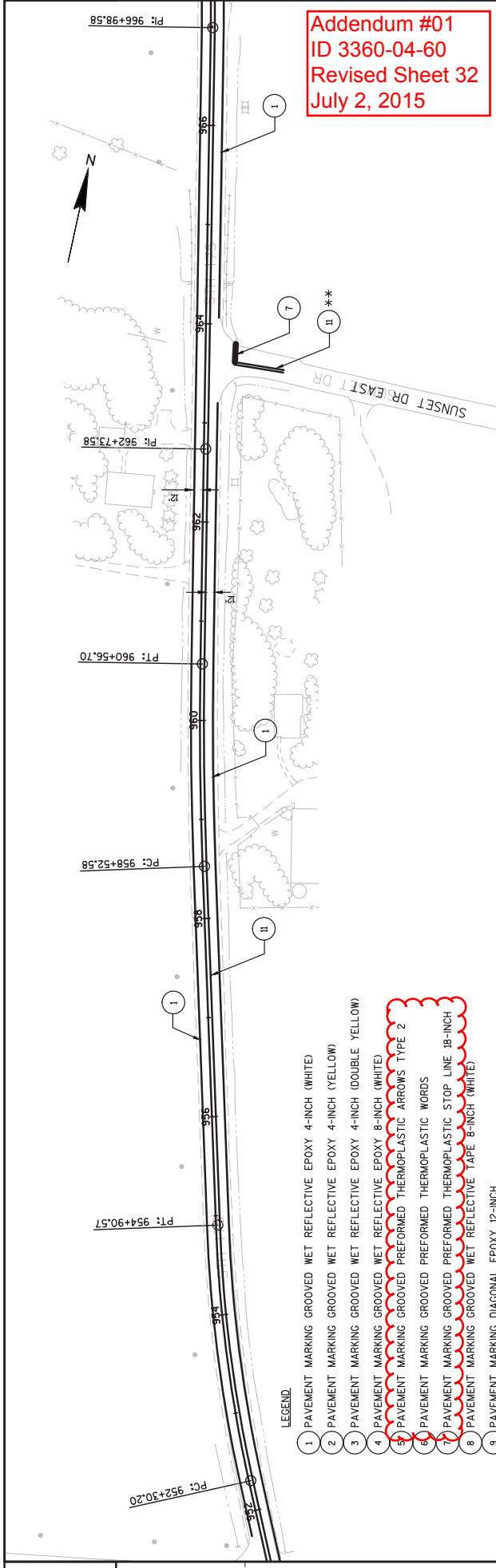
- LEGEND
- 1 PAVEMENT MARKING GROOVED WET REFLECTIVE EPOXY 4-INCH (WHITE)
  - 2 PAVEMENT MARKING GROOVED WET REFLECTIVE EPOXY 4-INCH (YELLOW)
  - 3 PAVEMENT MARKING GROOVED WET REFLECTIVE EPOXY 4-INCH (DOUBLE YELLOW)
  - 4 PAVEMENT MARKING GROOVED WET REFLECTIVE EPOXY 8-INCH (WHITE)
  - 5 PAVEMENT MARKING GROOVED PREFORMED THERMOPLASTIC ARROWS TYPE 2
  - 6 PAVEMENT MARKING GROOVED PREFORMED THERMOPLASTIC WORDS
  - 7 PAVEMENT MARKING GROOVED PREFORMED THERMOPLASTIC STOP LINE 18-INCH
  - 8 PAVEMENT MARKING GROOVED WET REFLECTIVE TAPE 8-INCH (WHITE)
  - 9 PAVEMENT MARKING DIAGONAL EPOXY 12-INCH
  - 10 PAVEMENT MARKING EPOXY 4-INCH (YELLOW)
  - 11 PAVEMENT MARKING EPOXY 4-INCH (DOUBLE YELLOW)

NOTES:  
 ESTABLISH NO-PASSING ZONE PER BID ITEM "LOCATING NO-PASSING ZONES"  
 \* .5' BEYOND RADIUS POINT  
 \*\* 50' (00'-AT STH 83' AND STH 33')



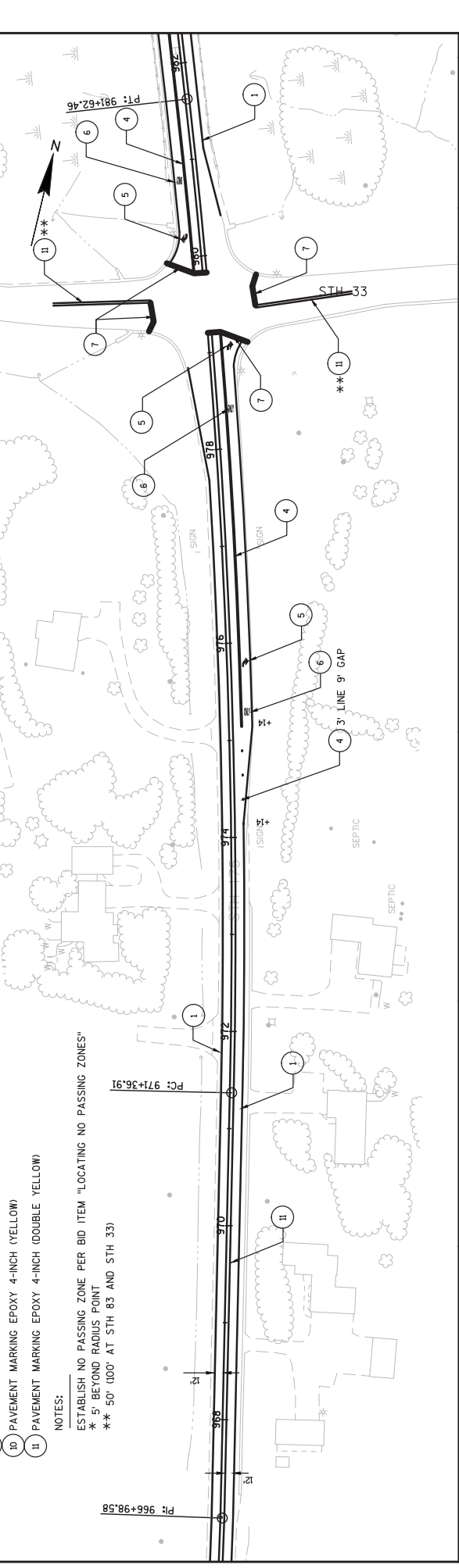
Addendum #01  
 ID 3360-04-60  
 Revised Sheet 31  
 July 2, 2015





Addendum #01  
 ID 3360-04-60  
 Revised Sheet 32  
 July 2, 2015

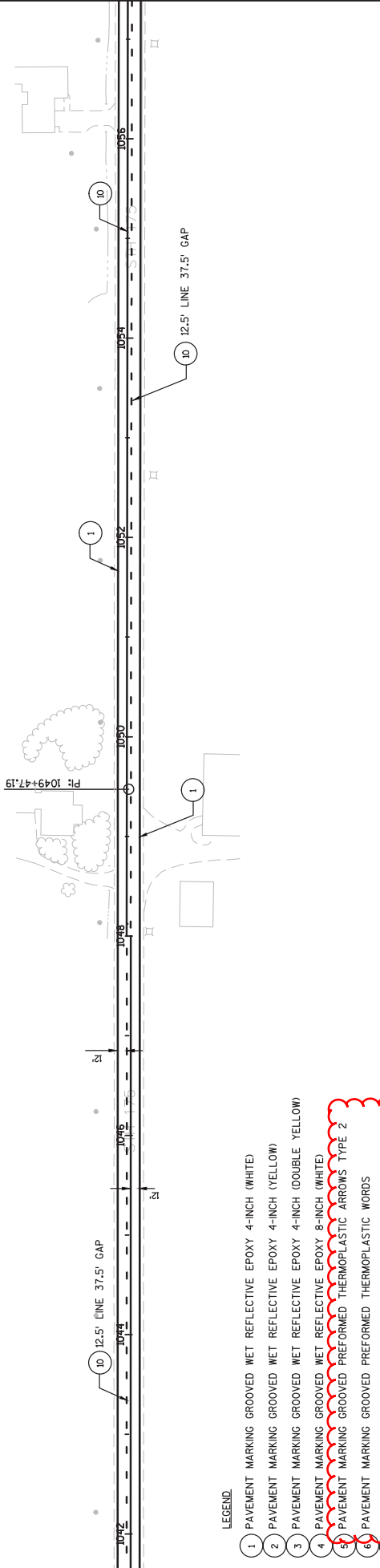
- LEGEND:**
- 1 PAVEMENT MARKING GROOVED WET REFLECTIVE EPOXY 4-INCH (WHITE)
  - 2 PAVEMENT MARKING GROOVED WET REFLECTIVE EPOXY 4-INCH (YELLOW)
  - 3 PAVEMENT MARKING GROOVED WET REFLECTIVE EPOXY 4-INCH (DOUBLE YELLOW)
  - 4 PAVEMENT MARKING GROOVED WET REFLECTIVE EPOXY 8-INCH (WHITE)
  - 5 PAVEMENT MARKING GROOVED WET REFLECTIVE EPOXY 8-INCH (YELLOW)
  - 6 PAVEMENT MARKING GROOVED WET REFLECTIVE EPOXY 8-INCH (DOUBLE YELLOW)
  - 7 PAVEMENT MARKING GROOVED WET REFLECTIVE EPOXY 8-INCH (WHITE)
  - 8 PAVEMENT MARKING GROOVED WET REFLECTIVE EPOXY 8-INCH (YELLOW)
  - 9 PAVEMENT MARKING GROOVED WET REFLECTIVE EPOXY 8-INCH (DOUBLE YELLOW)
  - 10 PAVEMENT MARKING GROOVED WET REFLECTIVE EPOXY 8-INCH (WHITE)
  - 11 PAVEMENT MARKING GROOVED WET REFLECTIVE EPOXY 8-INCH (YELLOW)
  - 12 PAVEMENT MARKING GROOVED WET REFLECTIVE EPOXY 8-INCH (DOUBLE YELLOW)



- NOTES:**
- ESTABLISH NO PASSING ZONE PER BID ITEM "LOCATING NO PASSING ZONES"
  - \* 5' BEYOND RADIUS POINT
  - \*\* 50' (100' AT STH 83 AND STH 33)

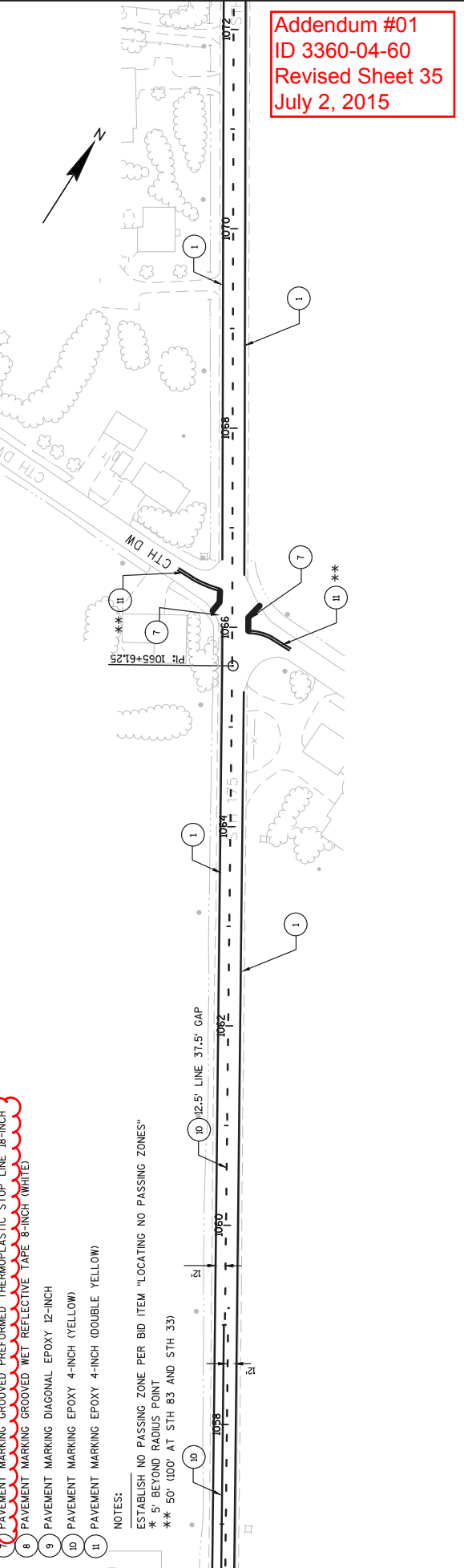




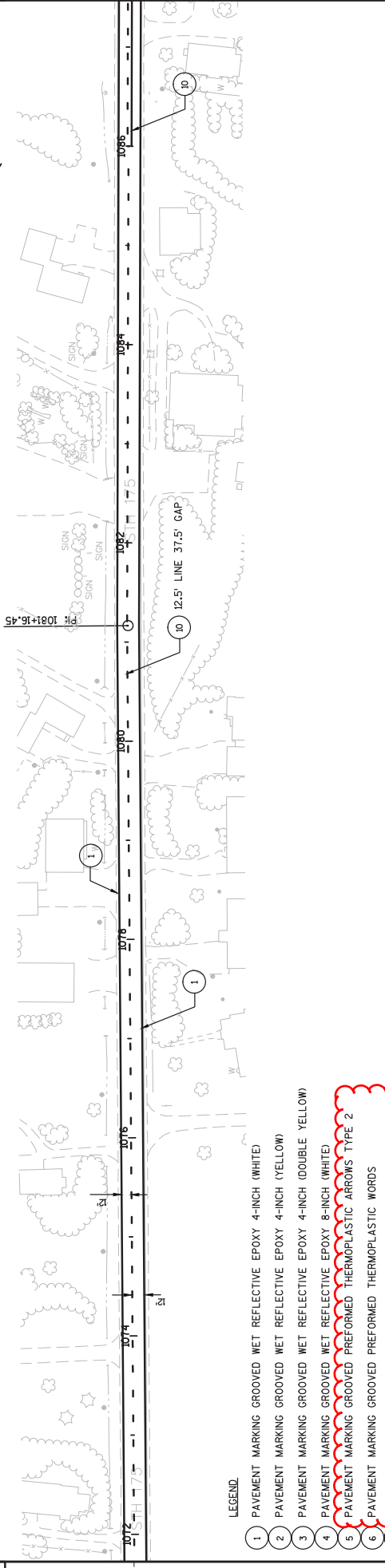


- LEGEND:**
- 1 PAVEMENT MARKING GROOVED WET REFLECTIVE EPOXY 4-INCH (WHITE)
  - 2 PAVEMENT MARKING GROOVED WET REFLECTIVE EPOXY 4-INCH (YELLOW)
  - 3 PAVEMENT MARKING GROOVED WET REFLECTIVE EPOXY 4-INCH (DOUBLE YELLOW)
  - 4 PAVEMENT MARKING GROOVED WET REFLECTIVE EPOXY 8-INCH (WHITE)
  - 5 PAVEMENT MARKING GROOVED PREFORMED THERMOPLASTIC ARROWS TYPE 2
  - 6 PAVEMENT MARKING GROOVED PREFORMED THERMOPLASTIC WORDS
  - 7 PAVEMENT MARKING GROOVED PREFORMED THERMOPLASTIC STOP LINE 18-INCH
  - 8 PAVEMENT MARKING GROOVED WET REFLECTIVE TAPE 8-INCH (WHITE)
  - 9 PAVEMENT MARKING DIAGONAL EPOXY 12-INCH
  - 10 PAVEMENT MARKING EPOXY 4-INCH (YELLOW)
  - 11 PAVEMENT MARKING EPOXY 4-INCH (DOUBLE YELLOW)

- NOTES:**
- ESTABLISH NO PASSING ZONE PER BID ITEM "LOCATING NO PASSING ZONES"
  - \* 5' BEYOND RADIUS POINT
  - \*\* 50' (100' AT STH 83 AND STH 33)



**Addendum #01**  
**ID 3360-04-60**  
**Revised Sheet 35**  
**July 2, 2015**

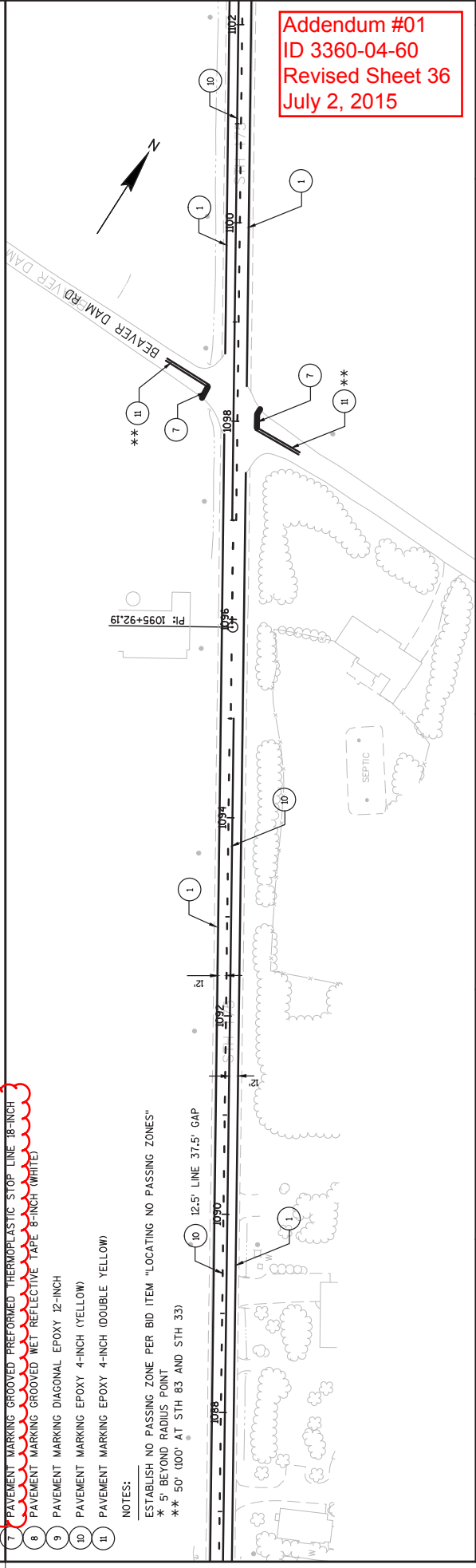


**LEGEND**

- 1 PAVEMENT MARKING GROOVED WET REFLECTIVE EPOXY 4-INCH (WHITE)
- 2 PAVEMENT MARKING GROOVED WET REFLECTIVE EPOXY 4-INCH (YELLOW)
- 3 PAVEMENT MARKING GROOVED WET REFLECTIVE EPOXY 4-INCH (DOUBLE YELLOW)
- 4 PAVEMENT MARKING GROOVED WET REFLECTIVE EPOXY 8-INCH (WHITE)
- 5 PAVEMENT MARKING GROOVED PREFORMED THERMOPLASTIC ARROWS TYPE 2
- 6 PAVEMENT MARKING GROOVED PREFORMED THERMOPLASTIC WORDS
- 7 PAVEMENT MARKING GROOVED PREFORMED THERMOPLASTIC STOP LINE 18-INCH
- 8 PAVEMENT MARKING GROOVED WET REFLECTIVE TAPE 8-INCH (WHITE)
- 9 PAVEMENT MARKING DIAGONAL EPOXY 12-INCH
- 10 PAVEMENT MARKING EPOXY 4-INCH (YELLOW)
- 11 PAVEMENT MARKING EPOXY 4-INCH (DOUBLE YELLOW)

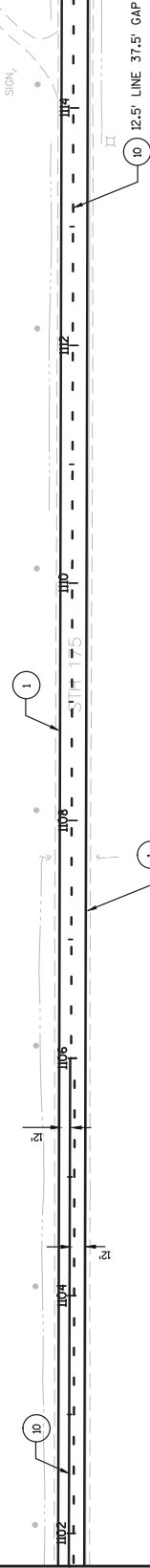
**NOTES:**

- ESTABLISH NO PASSING ZONE PER BID ITEM "LOCATING NO PASSING ZONES"
- \* 5' BEYOND RADIUS POINT
- \*\* 50' (100' AT STH 83 AND STH 33)



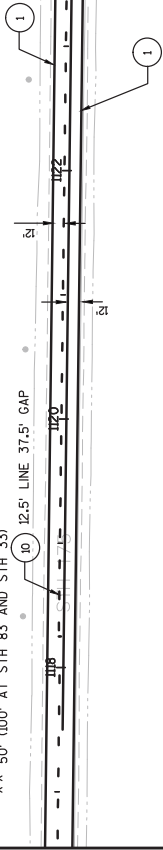
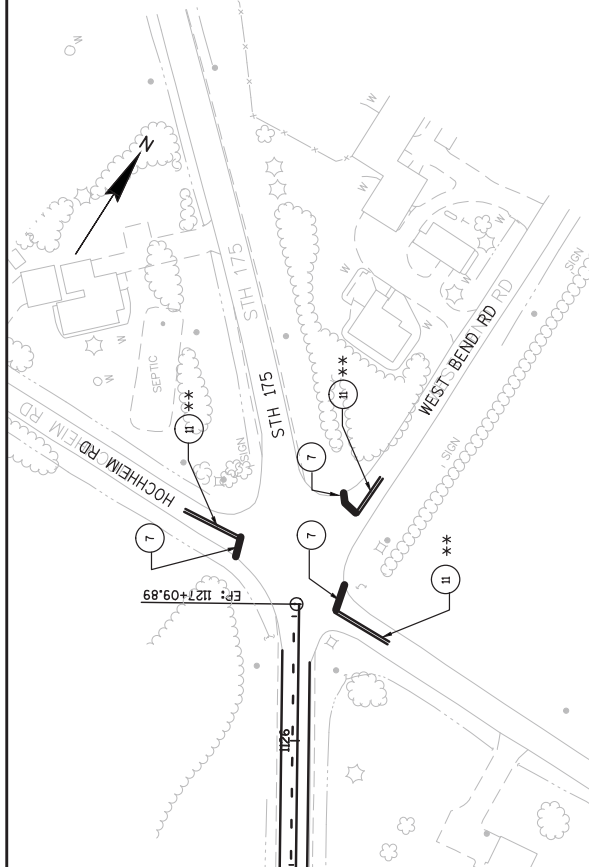
Addendum #01  
ID 3360-04-60  
Revised Sheet 36  
July 2, 2015

Addendum #01  
 ID 3360-04-60  
 Revised Sheet 37  
 July 2, 2015



- LEGEND.
- 1 PAVEMENT MARKING GROOVED WET REFLECTIVE EPOXY 4-INCH (WHITE)
  - 2 PAVEMENT MARKING GROOVED WET REFLECTIVE EPOXY 4-INCH (YELLOW)
  - 3 PAVEMENT MARKING GROOVED WET REFLECTIVE EPOXY 4-INCH (DOUBLE YELLOW)
  - 4 PAVEMENT MARKING GROOVED WET REFLECTIVE EPOXY 8-INCH (WHITE)
  - 5 PAVEMENT MARKING GROOVED PREFORMED THERMOPLASTIC ARROWS TYPE 2
  - 6 PAVEMENT MARKING GROOVED PREFORMED THERMOPLASTIC WORDS
  - 7 PAVEMENT MARKING GROOVED PREFORMED THERMOPLASTIC STOP LINE 18-INCH
  - 8 PAVEMENT MARKING GROOVED WET REFLECTIVE TAPE 8-INCH (WHITE)
  - 9 PAVEMENT MARKING DIAGONAL EPOXY 12-INCH
  - 10 PAVEMENT MARKING EPOXY 4-INCH (YELLOW)
  - 11 PAVEMENT MARKING EPOXY 4-INCH (DOUBLE YELLOW)

NOTES:  
 ESTABLISH NO PASSING ZONE PER BID ITEM "LOCATING NO PASSING ZONES"  
 \* 5' BEYOND RADIUS POINT  
 \*\* 50' (100' AT STH 83 AND STH 33)



**BARRIER SYSTEM GRADING SHAPING FINISHING**

\*FOR INFORMATION ONLY\*

STATION	TO	STATION	LOCATION	FILL	TOPSOIL	SEEDING	MULCHING
				C.Y.	S.Y.	LB	S.Y.
897+00	TO	898+20	RT	4	171	3	171
897+20	TO	898+20	LT	8	108	2	108
964+00	TO	965+50	RT	6	77	1	77
963+68	TO	967+00	LT	16	87	2	87
<b>TOTAL</b>				<b>34</b>	<b>443</b>	<b>8</b>	<b>443</b>

**FINISHING ITEMS**

625.0500	629.0210	630.0130		
SALVAGED FERTILIZER		SEEDING		
TOPSOIL	TYPEB	NO.30		
SY	CMT	LB		
584+20 TO 587+74	RT	38	.02	.7
584+00 TO 587+30	LT	39	.02	.7
892+10 TO 893+14	LT	36	.02	.6
UNDISTRIBUTED		--	.02	.5
<b>TOTAL</b>		<b>113.0</b>	<b>.08</b>	<b>2.5</b>

**EROSION CONTROL MOBILIZATION**

628.1905	628.1910
MOBILIZATIONS	
EROSION CONTROL	EROSION CONTROL
EACH	EACH
3	3
<b>TOTAL</b>	<b>3</b>

**LOCATING NO-PASSING ZONES**

Addendum #01  
ID 3360-04-60  
Revised Sheet 98  
July 2, 2015

648.0100
LOCATING
NO-PASSING ZONES
LOCATING ZONES
STH 175
10.5
<b>TOTAL</b>
10.5

**GUARDRAIL ITEMS**

STATION	TO	STATION	LOCATION	REMOVING GUARDRAIL LF	FINISHING EACH	GUARDRAIL MOW STRIP ASPHALT SY	GUARDRAIL GUARDRAIL LF	MGS THRIE BEAM TRANSITION LF	GUARDRAIL TERMINAL EAT	BACKFILL SLURRY CY
204.0165		614.0396								
584+20	TO	587+74	RT	354	--	--	264	40	1	6.0
584+00	TO	587+30	LT	330	--	--	240	40	1	5.5
590+32	TO	595+38	RT	506	--	--	416	40	1	8.5
590+39	TO	595+71	LT	532	--	--	442	40	1	9.0
892+10	TO	893+14	LT	104	--	--	--	--	--	2.0
897+00	TO	898+20	RT	85	1	--	25	40	1	1.5
897+20	TO	898+20	LT	86	1	--	13	40	1	1.5
964+00	TO	965+50	RT	133	1	50	53	--	2	2.5
963+68	TO	967+00	LT	146	1	83	232	--	2	2.5
<b>TOTAL</b>				<b>2,276</b>	<b>4</b>	<b>133</b>	<b>1,685</b>	<b>240</b>	<b>10</b>	<b>39.0</b>

**EROSION CONTROL ITEMS**

STATION	TO	STATION	LOCATION	EROSION BALES EACH	SLT FENCE LF	SILT FENCE MAINTENANCE LF	EROSION MAT URBAN CLASS I TYPE B SY	INLET PROTECTION TYPE C EACH	TEMPORARY DITCH CHECKS LF	ROCK BAGS EACH
628.1104		628.1504								
584+20	TO	587+74	RT	--	90	90	39	1	--	--
584+00	TO	587+30	LT	--	75	75	39	1	--	--
590+32	TO	595+38	RT	--	60	60	--	1	--	--
590+39	TO	595+71	LT	--	60	60	--	1	--	--
892+10	TO	893+14	LT	--	150	150	41	--	--	10
897+00	TO	898+20	RT	60	200	200	76	--	10	--
897+20	TO	898+20	LT	60	180	180	47	--	10	--
963+70	TO	965+51	RT	--	260	260	24	--	20	--
963+68	TO	965+72	LT	--	540	540	22	--	10	10
UNDISTRIBUTED				30	150	150	50	--	20	20
<b>TOTAL</b>				<b>150</b>	<b>1,765</b>	<b>1,765</b>	<b>338</b>	<b>4</b>	<b>70</b>	<b>40</b>

**TRAFFIC CONTROL**

STATION	TO	STATION	LOCATION	# OF DAYS	TRAFFIC CONTROL 3360-04-60 EACH	TRAFFIC CONTROL DRUMS EACH	TRAFFIC CONTROL BARRICADES TYPE III EACH	TRAFFIC CONTROL SIGNS EACH
643.0100		643.0300						
594+20	TO	595+38	RT	8	--	35	280	2
594+00	TO	595+71	LT	8	--	37	296	2
892+10	TO	893+14	LT	5	--	12	60	2
897+00	TO	898+20	RT	6	--	12	72	--
897+20	TO	898+20	LT	6	--	12	72	--
963+70	TO	965+51	RT	5	--	15	75	2
963+68	TO	965+72	LT	8	--	15	120	2
<b>TOTAL</b>				<b>50</b>	<b>1</b>	<b>--</b>	<b>975</b>	<b>19</b>

PROJECT NO: 3360-04-60

HWY: STH 175

COUNTY: WASHINGTON

MISCELLANEOUS QUANTITIES

E

FILE NAME: \_\_\_\_\_

PLOT NAME: \_\_\_\_\_

PLOT BY: \_\_\_\_\_

PLOT DATE: \_\_\_\_\_

PLOT SCALE: 1:1

SHEET: 98

**PAVEMENT MARKING**

STATION	TO	STATION	646.0106	646.0406	646.0883.S	646.2304.S	646.2308.S	SPV.0060.01	SPV.0060.02	SPV.0060.03	SPV.0060.03	647.0726
			EPOXY 4-INCH (YELLOW) LF	SAME DAY EPOXY 4-INCH (YELLOW) LF	GROOVED WET REFLECTIVE TAPE 8-INCH (WHITE) LF	GROOVED WET REFLECTIVE EPOXY 4-INCH (WHITE) LF	GROOVED WET REFLECTIVE EPOXY 4-INCH (YELLOW) LF	GROOVED PREFORMED THERMOPLASTIC ARROWS TYPE 2 LF	WORDS EACH	YIELD LINE SYMBOLS 18-INCH EACH	STOP LINE 18-INCH LF	DIAGONAL EPOXY 12-INCH (WHITE) LF
582+50	TO	587+60	1,000	1,000	1,000	1,000	1,000					
590+10	TO	635+25	8,660	8,660	8,660	8,660	8,660					
635+25	TO	649+25	2,150	2,150	2,150	2,150	2,150					
649+25	TO	666+50	1,930	1,930	1,930	1,930	200	1	1	1	1	
666+50	TO	681+75	2,420	2,420	2,420	2,420	2,420					
681+75	TO	687+40	890	890	890	890	890					
687+40	TO	714+75	5,010	5,010	5,010	5,010	5,010					
714+75	TO	754+50	2,870	2,870	2,870	2,870	2,870					
754+50	TO	776+50	850	850	850	850	850					
776+50	TO	792+00	4,290	4,290	4,290	4,290	4,290	1	1	1	1	
792+00	TO	820+25	5,550	5,550	5,550	5,540	5,540					
820+25	TO	833+00	1,375	1,375	1,375	2,310	2,310					
833+00	TO	863+50	5,350	5,350	280	5,820	5,820			11	19	150
863+50	TO	891+15	5,425	5,425		5,460	5,460					
891+15	TO	906+00	1,675	1,675		2,750	2,750					
906+00	TO	914+00	700	700		1,510	1,510					
914+00	TO	951+50	5,500	5,500		7,430	7,430					
951+50	TO	963+75	2,450	2,450		2,380	2,380					
963+75	TO	979+50	3,150	3,150		3,080	3,080	2	2	2	2	19
979+50	TO	1004+20	4,950	4,950		4,700	4,700	4	4	4	4	154
1004+20	TO	1034+50	4,675	4,675		5,940	5,940					45
1034+50	TO	1066+20	3,600	3,600		6,060	6,060					100
1066+20	TO	1098+20	2,650	2,650		6,220	6,220					33
1098+20	TO	1127+00	2,975	2,975		5,600	5,600					22
SUBTOTAL			53,125	80,095	280	105,000	26,970	1,400	8	8	11	958
TOTAL			53,125	80,095	280	131,970	1,400	8	8	11	958	150

**CONSTRUCTION STAKING**

LOCATION	LF	LS
650.5500	86	54,250
650.8000		
650.9910		
CURB AND RESURFACING SUPPLEMENTAL		
GUTTER REFERENCE CONTROL		
TOTAL	86	54,250

Addendum #01  
ID 3360-04-60  
Revised Sheet 99  
July 2, 2015



## SCHEDULE OF ITEMS

REVISED:

CONTRACT:  
20150714011PROJECT(S):  
3360-04-60FEDERAL ID(S):  
N/A

CONTRACTOR : \_\_\_\_\_

LINE NO	ITEM DESCRIPTION	APPROX. QUANTITY AND UNITS	UNIT PRICE		BID AMOUNT	
			DOLLARS	CTS	DOLLARS	CTS
0540	646.2304.S Pavement Marking Grooved Wet Reflective Epoxy 4-Inch	131,970.000 LF	.		.	
0550	646.2308.S Pavement Marking Grooved Wet Reflective Epoxy 8-Inch	1,400.000 LF	.		.	
0600	647.0726 Pavement Marking Diagonal Epoxy 12-Inch	150.000 LF	.		.	
0610	648.0100 Locating No-Passing Zones	10.500 MI	.		.	
0620	650.5500 Construction Staking Curb Gutter and Curb & Gutter	86.000 LF	.		.	
0630	650.8000 Construction Staking Resurfacing Reference	54,250.000 LF	.		.	
0640	650.9910 Construction Staking Supplemental Control (project) 01. 3360-04-60	LUMP	LUMP		.	
0650	690.0150 Sawing Asphalt	5,820.000 LF	.		.	
0660	690.0250 Sawing Concrete	34.000 LF	.		.	
0670	SPV.0035 Special 01. Backfill Slurry	39.000 CY	.		.	

SCHEDULE OF ITEMS

REVISED:

CONTRACT:  
20150714011

PROJECT(S):  
3360-04-60

FEDERAL ID(S):  
N/A

CONTRACTOR : \_\_\_\_\_

LINE NO	ITEM DESCRIPTION	APPROX. QUANTITY AND UNITS	UNIT PRICE		BID AMOUNT	
			DOLLARS	CTS	DOLLARS	CTS
0680	SPV.0090 Special 01. Concrete Curb And Gutter 32-Inch SPECIAL	108.000 LF	.		.	
0690	SPV.0090 Special 02. Sawing Concrete Curb Head	123.000 LF	.		.	
0700	SPV.0060 Special 01. Pavement Marking Grooved Preformed Thermoplastic Arrows Type 2	8.000 EACH	.		.	
0710	SPV.0060 Special 02. Pavement Marking Grooved Preformed Thermoplastic Words	8.000 EACH	.		.	
0720	SPV.0060 Special 03. Pavement Marking Grooved Preformed Thermoplastic Yield Line Symbols 18-Inch	11.000 EACH	.		.	
0730	SPV.0090 Special 03. Pavement Marking Grooved Preformed Thermoplastic Stop Line 18-Inch	958.000 LF	.		.	
	SECTION 0001 TOTAL				.	
	TOTAL BID				.	