



Wisconsin Department of Transportation

August 20, 2015

Division of Transportation Systems Development

Bureau of Project Development
 4802 Sheboygan Avenue, Rm 601
 P O Box 7916
 Madison, WI 53707-7916

Telephone: (608) 266-1631
 Facsimile (FAX): (608) 266-8459

NOTICE TO ALL CONTRACTORS:

**Proposal #01: 1000-44-73
 Holy Hill Rd
 Wisconsin SOR RR – USH 41/45
 STH 167
 Washington County**

Letting of September 15, 2015

This is Addendum No. 01, which provides for the following:

Special Provisions

Revised Special Provisions	
Article No.	Description
3	Prosecution and Progress. (Add language about flagging work operations)

Added Special Provisions	
Article No.	Description
15	Pavement Marking Grooved Preformed Plastic Tape 8-Inch, Item SPV.0090.02

Schedule of Items

Revised Bid Item Quantities					
Bid Item	Item Description	Unit	Old Quantity	Revised Quantity	Proposal Total
204.0115	Removing Asphaltic Surface Butt Joints	SY	861	1,261	1,261
211.0400	Prepare foundation for Asphaltic Shoulders	STA	16	22	22
305.0110	Base Aggregate Dense ¾-Inch	TON	231	271	271
305.0120	Base Aggregate Dense 1 ¼-Inch	TON	985	1,052	1,052
455.0105	Asphaltic Material PG58-28	TON	133	143	143
628.1504	Silt Fence	LF	375	1,009	1,009
628.1520	Silt Fence Maintenance	LF	375	1,009	1,009
638.2602	Removing Signs Type II	EACH	1	3	3
643.0300	Traffic Control Drums	DAY	2,890	3,140	3,140
643.0420	Traffic Control Barricades Type III	DAY	390	400	400
643.0705	Traffic Control Warning Lights Type A	DAY	780	800	800
643.0900	Traffic Control Signs	DAY	1,040	1,075	1,075

646.0106	Pavement Marking Epoxy 4-Inch	LF	9,910	10,437	10,437
646.0600	Removing Pavement Marking	LF	1,138	1,437	1,437
690.0150	Sawing Asphalt	LF	1,317	1,867	1,867
SPV.0060.01	Pavement Marking Grooved Preformed Thermoplastic Arrow Type 2	EACH	6	8	8
SPV.0060.02	Pavement Marking Grooved Preformed Thermoplastic Words	EACH	6	7	7
SPV.0090.01	Pavement Marking Grooved Preformed Thermoplastic Stop Line	LF	107	142	142

Added Bid Item Quantities					
Bid Item	Item Description	Unit	Old Quantity	Revised Quantity	Proposal Total
205.0100	Excavation Common	CY	0	96	96
460.1101	HMA Pavement Type E-1	TON	0	165	165
634.0816	Posts Tubular Steel 2"X2"X16'	EACH	0	2	2
637.2210	Removing Small Sign Supports	EACH	0	2	2
638.3000	Signs Type II Reflective H	SF	0	18	18
SPV.0090.02	Pavement Marking Grooved Preformed Plastic Tape 8-Inch	LF	0	244	244

Plan Sheets

Revised Plan Sheets	
Plan Sheet	Plan Sheet Title (brief description of changes to sheet)
1	Title Sheet (Added shoulder widening work at STH 164 & STH 167 intersection)
2	General Notes (Revised and added more notes)
3	Utilities & Contacts (Revised and added more contacts)
33	Miscellaneous Quantities (Revised Silt Fence quantities)

Added Plan Sheets	
Plan Sheet	Plan Sheet Title (brief description of why sheet was added)
3A	Project Overview (Changed of Scope to add shoulder widening work at STH 164)
6A	Typical Section (Changed of Scope to add shoulder widening work at STH 164)
10A	Plan Detail (Changed of Scope to add shoulder widening work at STH 164)
10B	Erosion Control (Sheet was missing in the plans)
10C	Erosion Control (Changed of Scope to add shoulder widening work at STH 164)
10D	Permanent Signing (Changed of Scope to add shoulder widening work at STH 164)
13A	Pavement Marking (Changed of Scope to add shoulder widening work at STH 164)
24A	Traffic Control (Changed of Scope to add shoulder widening work at STH 164)
28A	Alignment Diagram (Changed of Scope to add shoulder widening work at STH 164)
35A	Miscellaneous Quantities (Changed of Scope to add shoulder widening work at STH 164)
35B	Miscellaneous Quantities (Changed of Scope to add shoulder widening work at STH 164)
35C	Miscellaneous Quantities (Changed of Scope to add shoulder widening work at STH 164)
36A	Plan & Profile (Changed of Scope to add shoulder widening work at STH 164)
81A	Earthwork (Changed of Scope to add shoulder widening work at STH 164)

Other

Revise the contract time for completion from 13 working days to 18 working days (an increase in 5 working days).

The responsibility for notifying potential subcontractors and suppliers of these changes remains with the prime contractor.

Sincerely,

Mike Coleman

Proposal Development Specialist
Proposal Management Section

ADDENDUM NO. 01

1000-44-73

August 20, 2015

Special Provisions

3. Prosecution and Progress.

Add the following:

STH 164/STH 167 Intersection:

Keep STH 167 open to two lanes of traffic during construction of the westbound right turn lane. Close the westbound shoulder of STH 167 in the work zone. Install traffic control devices prior to beginning work on the right turn lane.

Between 9 am and 4 pm, shift traffic to the south using traffic control drums as detailed in the plan. When flagging operations are necessary during working hours, 3 flaggers will be required. Locate one flagger east of the work zone to control westbound traffic, one flagger between the work zone and the STH 167/STH 164 intersection to control traffic turning east off of STH 164 from either direction and one just west of the STH 167/STH 164 intersection to control traffic approaching the work zone from the west. The flagger between the work zone and STH 167/STH 164 intersection may allow a maximum of a 3 to 4 car queue to build up before releasing traffic to avoid blockage of the intersection.

During non-working hours build up the shoulder with gravel so there is no abrupt drop off from the through lane. Use standard detail drawing 15D 28-2 Traffic Control, Work on Shoulder or Parking Lane, Undivided Roadway during non-working hours. Keep traffic control devices in place until right turn lane has been paved, shouldered, and striped.

15. Pavement Marking Grooved Preformed Plastic Tape 8-Inch, Item SPV.0090.02.

A Description

This special provision describes furnishing, grooving, and installing preformed plastic pavement marking tape as shown on the plans, in accordance with section 646 of the standards specifications, and as hereinafter provided.

B Materials

Furnish grooved preformed plastic pavement marking tape and adhesive material, if required, from the department's approved products list.

Furnish a copy of the manufacturer's recommendations to the engineer before preparing the pavement marking grooves.

C Construction

C.1 General

For quality assurance, provide the project engineer and the region's Marking Section evidence of manufacturer training in the proper placement and installation of pavement marking tape.

Plane the grooved lines in accordance with details in the plan. Use grooving equipment with a free-floating, independent cutting or grinding head. Plane a minimum number of passes to create a smooth groove.

C.2 Groove Depth

Cut the groove to a depth of 120 mils \pm 10 mils from the pavement surface or, if tined, from the high point of the tined surface. Measure depth using a straightedge placed perpendicular to the groove. The department may periodically check groove depths.

C.3 Groove Width – Longitudinal Markings

Cut the groove one-inch wider than the width of the tape.

C.4 Groove Position

Position the groove edge in accordance with plan details. Groove a minimum of 4 inches, but not greater than, 12 inches from both ends of the tape segment. Achieve straight alignment with the grooving equipment.

C.5 Groove Cleaning

C.5.1 Concrete

Cooling the cutting head with water may be necessary for some applications and equipment. If cooling water is necessary, flush the groove immediately with water after cutting to remove any build-up of cement dust and water slurry. If this is not done, the slurry may harden in the groove.

If water is used in the grooving process, allow the groove to dry a minimum of 24 hours after groove cleaning, after removal of excess water, and prior to pavement marking application. Clean and dry the groove for proper application of the adhesive, and placement of the pavement marking. Use a high-pressure air blower with at least 185 ft³/min air flow and 90 psi air pressure to clean the groove; use of the air blower does not decrease the amount of time required for the groove to dry.

C.5.2 New Asphalt

Groove pavement 5 or more days after paving.

If opening to traffic an asphalt lane that is not grooved, place temporary pavement marking. For asphalt lanes not open to traffic, temporary pavement marking is not required.

Use a high-pressure air blower with at least 185 ft³/min air flow and 90 psi air pressure to clean the groove.

C.5.3 Existing Asphalt

Check for structural integrity in supporting grooving operations. If the structural integrity of the asphalt pavement is inadequate to support grooving operations, immediately notify the engineer.

Use a high-pressure air blower with at least 185 ft³/min air flow and 90 psi air pressure to clean the groove.

C.6 Tape Application

Apply the tape when both the air and surface temperature are 40 degrees F and rising.

Apply tape in the groove as per manufacturer's recommendations. If manufacturer's recommendations require surface preparation adhesive, apply an adhesive with lower than 91g/l VOC during the following period of time due to Volatile Organic Compound Limitations:

May 1 to September 30, both dates inclusive – the Southeast Region and the ozone non-attainment Northeast Region counties of Sheboygan, Manitowoc, and Kewaunee.

Use any adhesive from the preformed plastic approved products list in the remainder counties and for the remainder of the year.

The adhesive must be dry (feels tacky but is no longer in liquid form) and have a matte finish rather than a glossy wet appearance.

Tamp the pavement marking tape with a tamper cart roller cut to fit the groove. Tamp three complete cycles with grooved modified equipment.

D Measurement

The department will measure Pavement Marking Grooved Preformed Plastic Tape (Width) in length by the linear foot of tape placed in accordance with the contract and accepted.

E Payment

The department will pay for measured quantities at the contract unit price under the following bid items:

ITEM NUMBER	DESCRIPTION	UNIT
SPV.0090.02	Pavement Marking Grooved Preformed Plastic Tape 8-Inch	LF

Payment is full compensation for cleaning and preparing the pavement surface; furnishing and installing the material; furnishing, placing, and removing temporary pavement marking, if necessary; and for furnishing all labor, tools, equipment, and incidentals necessary to complete the contract work.

Schedule of Items

Attached, dated August 20, 2015, are the revised Schedule of Items Pages 1 – 8.

Plan Sheets

The following 8½ x 11-inch sheets are attached and made part of the plans for this proposal:

Revised sheets: 1, 2, 3, and 33.

Added sheets 3A, 6A, 10A – 10D, 13A, 24A, 28A, 35A – 35C, 36A, and 81A.

END OF ADDENDUM

STATE OF WISCONSIN DEPARTMENT OF TRANSPORTATION

PLAN OF PROPOSED IMPROVEMENT

HOLY HILL RD.

WISCONSIN SOR RR TO USH 41/45

STH 167

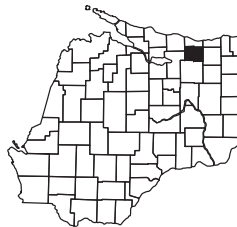
WASHINGTON COUNTY

STATE PROJECT NUMBER
1000-44-73

ORDER OF SHEETS

Section No.	Title
1	Typical Sections and Details
2	Estimate of Quantities
3	Miscellaneous Quantities
4	Right of Way Plat
5	Plan and Profile
6	Standard Detail Drawings
7	Sign Plates
8	Structure Plans
9	Computer Earthwork Data
9	Cross Sections

TOTAL SHEETS =



DESIGN DESIGNATION

A.A.D.T.	2017 = 12,000
A.A.D.T.	2035 = 15,400
D.H.V.	= 6.5%
D.V.	= 62.3%
T.	= 8.2%
DESIGN SPEED	= 45 MPH
ESALS	=

CONVENTIONAL SYMBOLS

PLAN	PROFILE
CORPORATE LIMITS	GRADE LINE
PROPERTY LINE	ORIGINAL GROUND
LOT LINE	MARSH OR ROCK PROFILE
LIMITED HIGHWAY EASEMENT	(IT TO BE OPENED OR SLOPPED)
EXISTING RIGHT OF WAY	SPECIAL DITCH
PROPOSED OR NEW R/W LINE	GRADE ELEVATION
SLOPE INTERCEPT	CULVERT (Profile View)
REFERENCE LINE	UTILITIES
EXISTING CULVERT	ELECTRIC
PROPOSED CULVERT	FIBER OPTIC
(BOX OR PIPE)	GAS
COMBUSTIBLE FLUIDS	SANITARY SEWER
	STORM SEWER
	TELEPHONE
MARSH AREA	WATER
	UTILITY PEDESTAL
WOODED OR SHRUB AREA	POWER POLE
	TELEPHONE POLE

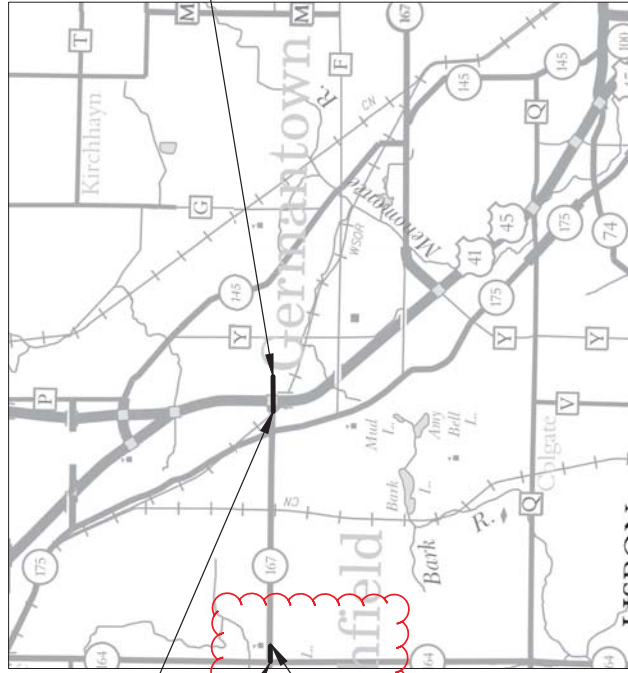
STATE PROJECT	FEDERAL PROJECT
1000-44-73	PROJECT
	CONTRACT

Addendum No. 01
ID 1000-44-73
Revised Sheet 1
August 20, 2015

STATE OF WISCONSIN
DEPARTMENT OF TRANSPORTATION

PREPARED BY: Surveyor: DOT, Designer: N. YANG, Project Manager: CHRISTIE HANNA, Regional Examiner: REEM SHAIKH, Regional Supervisor: REEM SHAIKH, C.O. Examiner: [Signature]

APPROVED FOR THE DEPARTMENT: April 30, 2015, [Signature] (Signature)



HORIZONTAL POSITIONS SHOWN ON THIS PLAN ARE WISCONSIN COUNTY COORDINATES, WASHINGTON COUNTY, NAD83 (2007), IN U.S. SURVEY FEET. VALUES ARE GRID COORDINATES. GRID BEARINGS AND GRID DISTANCES ARE SHOWN IN THIS PLAN. GRID BEARINGS AND GRID ELEVATIONS SHOWN ON THIS PLAN ARE REFERENCED TO THE NATIONAL GEODETIC VERTICAL DATUM OF NAVD88 (2007).

GENERAL NOTES:

- NO TREES OR SHRUBS ARE TO BE REMOVED WITHOUT THE APPROVAL OF THE ENGINEER
- THE LOCATIONS OF EXISTING & PROPOSED UTILITY INSTALLATIONS AS SHOWN ON THE PLANS ARE APPROXIMATE. THERE MAY BE OTHER UTILITY INSTALLATIONS WITHIN THE PROJECT AREA THAT ARE NOT SHOWN.
- ANY LOCAL MUNICIPAL UTILITY WHICH IS NOT A MEMBER OF THE DIGGERS HOTLINE MUST BE CONTACTED SEPARATELY.
- ALL HOLES OR OPENINGS BELOW SUBGRADE RESULTING FROM ABANDONMENT OR REMOVAL OF EXISTING STRUCTURES SHALL BE BACKFILLED WITH SUITABLE MATERIAL OR AS DIRECTED BY THE ENGINEER.
- DIMENSIONS GIVEN FOR EXISTING FEATURES SHALL BE CONSIDERED AS APPROXIMATE AND SHALL BE MEASURED IN THE FIELD FOR MATCHING PURPOSES.
- CURB AND GUTTER RADII, GRADES AND OFFSETS ARE TO THE FLANGE UNLESS NOTED OTHERWISE.
- THE CONTRACTORS PAVING OPERATIONS SHALL BE CONSISTENT WITH THE PLAN TYPICAL SECTIONS AND CONSTRUCTED TO PREVENT HMA LONGITUDINAL JOINTS FROM BEING LOCATED WITHIN A DRIVING OR TURNING LANE.
- WHEN THE QUANTITY OF BASE AGGREGATE DENSE 3/4 INCH, BASE AGGREGATE DENSE 1 1/4 INCH OR HMA PAVEMENT IS MEASURED FOR PAYMENT BY THE TON, THE DEPTH OR THICKNESS SHOWN ON THE PLAN IS APPROXIMATE AND THE ACTUAL DEPTH VARY DEPENDING ON THE ACTUAL DISTRIBUTION OF THE MATERIAL AS APPROVED BY THE ENGINEER IN THE FIELD.
- RESHAPE ANY PREVIOUSLY GRASSED AREAS WHICH ARE DISTURBED BY CONTRACTOR OPERATIONS OUTSIDE OF THE NORMAL CONSTRUCTION LIMITS.
- PURSUANT TO CHAPTER 59 OF THE WISCONSIN STATUTES, THE CONTRACTOR SHALL CAREFULLY MAKE A SEARCH FOR EVIDENCE OF ALL LANDMARKS, BENCHMARKS, AND OTHER CONTROL POINTS IN ALL AREAS WHERE SUCH LANDMARKS, BENCHMARKS, AND OTHER CONTROL POINTS MAY EXIST.
- THE CONTRACTOR IS TO WORK WITH UTMOST CARE AND PROTECT ALL SURVEY MARKERS. REMOVAL OF ANY SURVEY MARKERS IS TO BE WITH THE APPROVAL OF THE ENGINEER.
- ANY PROPOSED CHANGES BY THE CONTRACTOR TO TRAFFIC CONTROL DEVICES/STAGING SHALL BE PRESENTED TO THE ENGINEER IN WRITING A MINIMUM OF 48 HOURS PRIOR TO INSTALLATION FOR REVIEW AND APPROVAL.
- PRIVATE AND COMMERCIAL ENTRANCES SHALL BE RESTORED IN KIND TO EXISTING CONDITIONS, AS SHOWN ON THE PLANS, OR AS DIRECTED BY THE ENGINEER. CONSTRUCTION LIMITS ON PRIVATE AND COMMERCIAL ENTRANCES SHALL BE AS SHOWN ON THE PLANS OR AS DIRECTED BY THE ENGINEER.
- ALL COMMERCIAL AND RESIDENTIAL DRIVEWAYS ARE TO REMAIN OPEN DURING CONSTRUCTION. TEMPORARY CLOSINGS WILL BE NECESSARY AND ALLOWED AS APPROVED BY THE ENGINEER AND COORDINATED WITH PROPERTY OWNERS. 48 HOUR NOTICE TO THE PROPERTY OWNER IS REQUIRED PRIOR TO THE TEMPORARY CLOSING.
- RE-TOPSOIL OF GRADED AREAS AS DESIGNATED BY THE ENGINEER, IMMEDIATELY AFTER GRADING IS COMPLETED WITHIN THOSE AREAS. SEED, FERTILIZE, AND MULCH/EROSION MAT TOP-SOILED AREAS AS DESIGNATED BY THE ENGINEER, WITHIN FIVE (5) CALENDAR DAYS AFTER PLACEMENT OF TOPSOIL. IF GRADED AREAS ARE LEFT EXPOSED FOR MORE THAN (14) CALENDAR DAYS, SEED THOSE AREAS WITH TEMPORARY SEED.
- STOCKPILE EXCESS MATERIAL OR SPOILS ON UPLAND AREAS AWAY FROM WETLANDS, FLOODPLAINS AND WATERWAYS. STOCKPILED SOIL SHALL BE PROTECTED AGAINST EROSION. IF STOCKPILED MATERIAL IS LEFT FOR MORE THAN FOURTEEN (14) CALENDAR DAYS, SEED THE STOCKPILE WITH TEMPORARY SEED.
- EROSION CONTROL BMP'S ARE AT SUGGESTED LOCATIONS. THE ACTUAL LOCATIONS WILL BE DETERMINED BY THE CONTRACTORS EIP AND BY THE ENGINEER. EROSION CONTROL BMP'S SHALL BE MAINTAINED UNTIL PERMANENT VEGETATION IS ESTABLISHED OR UNTIL THE ENGINEER DETERMINES THAT THE BMP IS NO LONGER REQUIRED.
- EROSION CONTROL FEATURES ARE TO BE PLACED IN SEQUENCE WITH CONSTRUCTION STAGING AND MAINTAINED THROUGH EACH STAGE OR AS DETERMINED BY THE ENGINEER.
- IMMEDIATELY AFTER CONSTRUCTION OF ANY INLET, CONTRACTOR SHALL CONSTRUCT THE INLET PROTECTION TO MINIMIZE SEDIMENTATION IN THE INLET AND STORM SEWER.
- MISCELLANEOUS REMOVAL ITEMS SHALL BE REMOVED TO AN EXISTING JOINT, SAWCUT WHERE SHOWN ON PLANS OR AS DIRECTED BY THE ENGINEER.
- ALL SIGN LOCATIONS SHALL BE REVIEWED BY THE ENGINEER PRIOR TO INSTALLATION.
- LOCATIONS OF EXISTING UTILITIES AND RIGHT OF WAY SHOWN ON THE CROSS SECTIONS ARE APPROXIMATE AND ARE TO BE USED FOR REFERENCE ONLY.
- A SAWED JOINT IS REQUIRED WHERE NEW HAM SURFACE MEETS EXISTING ASPHALTIC CONCRETE SURFACE.
- SHOULDERS SHALL BE PAVED FULL WIDTH IN LOCATIONS WHICH REQUIRE STEEL PLATE BEAM GUARD AND SHALL BE PAVED PRIOR TO BEAM GUARD INSTALLATION.
- HMA PAVEMENT SHALL BE CONSTRUCTED AS FOLLOWS:
 1. STH 167 FROM STA 115+80 TO 118+91 & FROM STA 121+05 TO STA 132+62 = (4 1/2 INCH HMA PAVEMENT TYPE E-3)
 - SHALL BE PLACED WITH ONE 2 1/2 INCH LOWER LAYER (PG58-28, 19.0 mm) AND
 - ONE 1 1/2 INCH UPPER LAYER (PG58-28, 12.5mm)
 2. STH 167 FROM STA 170+75.63 TO STA 176+02.40 (4 INCH HMA PAVEMENT TYPE E-1)
 - SHALL BE PLACED WITH ONE 4.0 INCH UPPER LAYER (PG58-28, 12.5mm)

STANDARD ABBREVIATIONS

AC	AGGREGATE
AGG	AGGREGATE
ASPH	ASPHALT
BM	BENCHMARK
CL	CENTER LINE
C/L	CENTER LINE
CON	CONCRETE
CO	COUNTY
CTH	COUNTY TRUNK HIGHWAY
CULV	CULVERT
C&G	CURB & GUTTER
DIA	DIAMETER
X	EAST GRID COORDINATE
ELE	ELEVATION
EXIST	EXISTING
FERT	FERTILIZE
FL	FLOW LINE
FL	FLOW LINE
CWT	HUNDREDWEIGHT
HYD	HYDRANT
INV	INVERT
LF	LINEAR FOOT
LS	LUMP SUM
PAVT	PAVEMENT
PLE	PERMANENT LIMITED EASEMENT
REQD	REQUIRED
ROW	RIGHT OF WAY
SDD	STANDARD DETAIL DRAWINGS
SSPRC	STORM SEWER PIPE
STH	REINFORCED CONCRETE STATE TRUNK HIGHWAY
STA	STATION
TEL	TELEPHONE
TLE	TEMPORARY LIMITED EASEMENT
TYP	TYPICAL
Y	NORTH GRID COORDINATE

Addendum No. 01
ID 1000-44-73
Revised Sheet 2
August 20, 2015

UTILITIES

Frontier - Wisconsin
Ryan Osnes
Manager, Engineering
118 Division Street
Plymouth, WI 53073
(920) 893-7465
ryan.d.osnes@ftr.com

Time Warner Cable
Steve Cramer
1320 N. Dr. Martin Luther King Drive
Milwaukee, WI 53212
(414) 277-4045
wis.engineering@twcable.com

Level 3 Communications
Nickey Worthington
Network Relocations
1025 Eldorado Boulevard
Broomfield, CO 80021
(720) 888-0336
nickey.worthington@level3.com

WE Energies - GAS
LaTroy Brumfield
Project Manager
333 W. Everett Street - A200
Milwaukee, WI 53203
(414) 221-5617
latroy.brumfield@we-energies.com

Charter Communications
Tom Harycki
2312 Continental Drive
West Bend, WI 53095
(262) 306-8756 Ext. 20702
tharycki@charter.com

PAETEC Business Services
Jim Kostuch
Supervisor - OSP Network
13935 Bishops Drive
Brookfield, WI 53005
(262) 792-7938
james.kostuch@windstream.com

AT&T Wisconsin
Aper Kolu
Manager, OSP Design & engineering
2005 Pewaukee Road
Waukesha, WI 53188
(262) 970-8464
Ak308a@att.com

WisDOT - Signals
Dan Detrick
141 NW Barstow Street
PO Box 798
Waukesha, WI 53187-0798
(414) 750-2805

WisDOT - Signals
Elizabeth Lloyd-Weis
141 NW Barstow Street
PO Box 798
Waukesha, WI 53187-0798
(262) 521-4404

LaTroy Brumfield, Project Manager

We Energies (Electric)
333 W. Everett St - A299
Milwaukee, WI 53203
Phone: (414) 221-5617
Fax: (414) 221-2336
latroy.brumfield@we-energies.com

LaTroy Brumfield, Project Manager
Wisc. Gas Co. dba We Energies
(fka Northlight)
333 W. Everett St - A299
Milwaukee, WI 53203
Phone: (414) 221-5617
Fax: (414) 221-2336
latroy.brumfield@we-energies.com

Tom Harycki
Charter Communications
2312 Continental Drive
West Bend, WI 53095
Phone: (262) 306-8756 Ext. 20702
Fax: (262) 306-9021
tharycki@charter.com

Tom Wondra
Washington Hwy., County of
900 Lang Street
West Bend, WI 53090
Phone: (262) 335-4435
Fax: (262) 335-4439
tom.wondra@co.washington.wi.us

Daniel Ludwig
Director of Public Works
N112 W17001 Mequon Rd
P.O. Box 337
Germantown, WI 53022
(262) 253-8254
atlwater@bhvi.fr.com

TW Cable Engineering
Time Warner Cable
1320 N. Dr. Martin Luther King Dr.
Milwaukee, WI 53212
Phone: (414) 277-4045
wis.engineering@twcable.com

Mike Gauthier
Public Work supervisor
Richfield, Village of
4128 Hubertus Road
Hubertus, WI 53033
Phone: (262) 628-2260
Fax: (262) 628-2984
dow@richfieldwi.gov

CONTACTS:

Kristina Betzold
Environmental Analysis and Review Specialist
Wisconsin DNR
2300 NDr. Martin Luther King Jr. Dr.
Milwaukee, WI 53212
Phone: (414) 263-8517
Cell: (414) 507-4946
kristina.betzold@wisconsin.gov

Washington County Engineer/Surveyor
Scott M. Schmidt, PE, RLS
Washington County Public Agency Center
333 East Washington St., Suite 2300
P.O. BOX 2003
West Bend, WI 53095-2003
Phone: 262-335-6881 FAX: 262-335-4171
scott.schmidt@co.washington.wi.us

Christine Hanna
WISDOT Project Manager SE-Region
141 NW Barstow St
P.O. Box 798
Waukesha, WI 53187-0798
Phone: (262) 548-8809
FAX: (262) 548-8645
christine.hanna@dot.wis.gov

Elizabeth Lloyd-Weis
WISDOT SE Region Traffic Signals
141 NW Barstow St
P.O. Box 798
Waukesha, WI 53187-0798
Phone: 262-521-4404
elizabeth.lloydweis@dot.wis.gov

Jeff Madson
WISDOT SE Region STOC
141 NW Barstow St
P.O. Box 798
Waukesha, WI 53187-0798
Office: 414-225-3723
jeffrey.madson@dot.wis.gov

Eric Perera
SE Region Highway Lighting Engineer
Wisconsin Department of Transportation
141 NW Barstow St
Waukesha, WI 53187-0798
Office: 262-574-5422
Mobile: 414-750-0935
eric.perera@dot.wis.gov

OTHER CONTACTS

Brian Field
Dodge County Highway Commissioner
211 E. Center Street
Juneau, WI 53039-1309
(920) 386-3680
bfield@co.dodge.wi.us

Tom Wondra
Washington County Highway Commissioner
900 Lang Street
West Bend, WI 53090
(262) 335-4435
Tom.wondra@co.washington.wi.us

Allison Bussler
Director of Public Works - Waukesha County
Waukesha County Administration Center
515 W. Moreland Road
Waukesha, WI 53188
(262) 548-7740
abussler@waukeshacounty.gov

Dan Vandermolten
Town of Ashippun - Dodge County
PO Box 206
(262) 445-2480
highway@townofashippun.org

Dave Lofy
Town of Erin - Washington County
1846 STH 83 South
Hartford, WI 53027
(414) 750-9629
erintown@netwurx.net

Jim Healy
Village of Richfield - Washington County
4128 Hubertus Road
Hubertus, WI 53033
(262) 628-2260 Ext. 115
administrator@richfieldwi.gov

Owen Salzman
Town of Oconomowoc
W359 N6812 Brown Street
Oconomowoc, WI 53066
(920) 474-4449
clerk@townofconomowoc.com

Dan Wiemer
Village of Oconomowoc Lake
38528 W Pabst Court,
Oconomowoc, WI 53066
(262) 567-5301
Villagehall@conomowoc.com

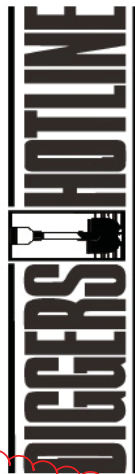
OTHER CONTACTS

Designer Contact:
Foth Infrastructure & Environment, LLC
Chris Saxby, PE
5117 West Tarrace Drive
Madison, WI 53718
(608) 242-5942
chris.saxby@foth.com

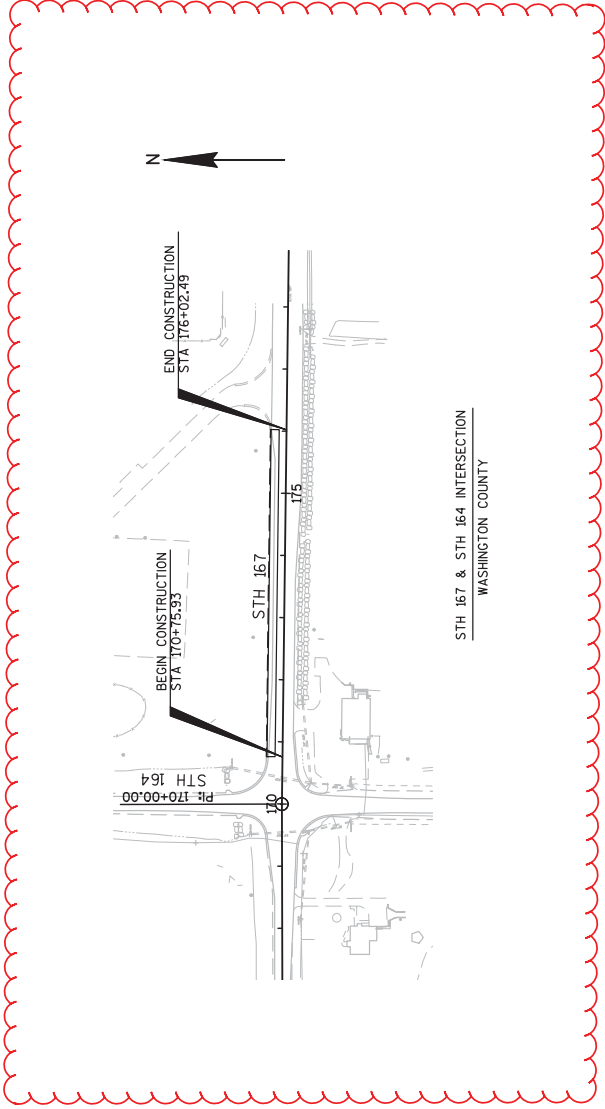
WisDOT Contact:
Heather Sackman, PE
141 NW Barstow Street
PO Box 798
Waukesha, WI 53187-0798
heather.sackman@dot.wis.gov

DNR Contact:
Kristina Betzold
Southeast Region Headquarters
2300 N. Dr. Martin Luther King Jr. Dr.
Milwaukee, WI 53212
(414) 263-8517
kristina.betzold@wisconsin.gov

Addendum No. 01
ID 1000-44-73
Revised Sheet 3
August 20, 2015



Dial 811 or (800) 242-8511
www.DiggersHotline.com



STH 167 & STH 164 INTERSECTION
WASHINGTON COUNTY

Addendum No. 01
ID 1000-44-73
Added Sheet 3A
August 20, 2015

PROJECT NO: 1000-44-73

HWY: HOLY HILL RD.

COUNTY: WASHINGTON

PROJECT OVERVIEW: STH 167

SHEET 3A

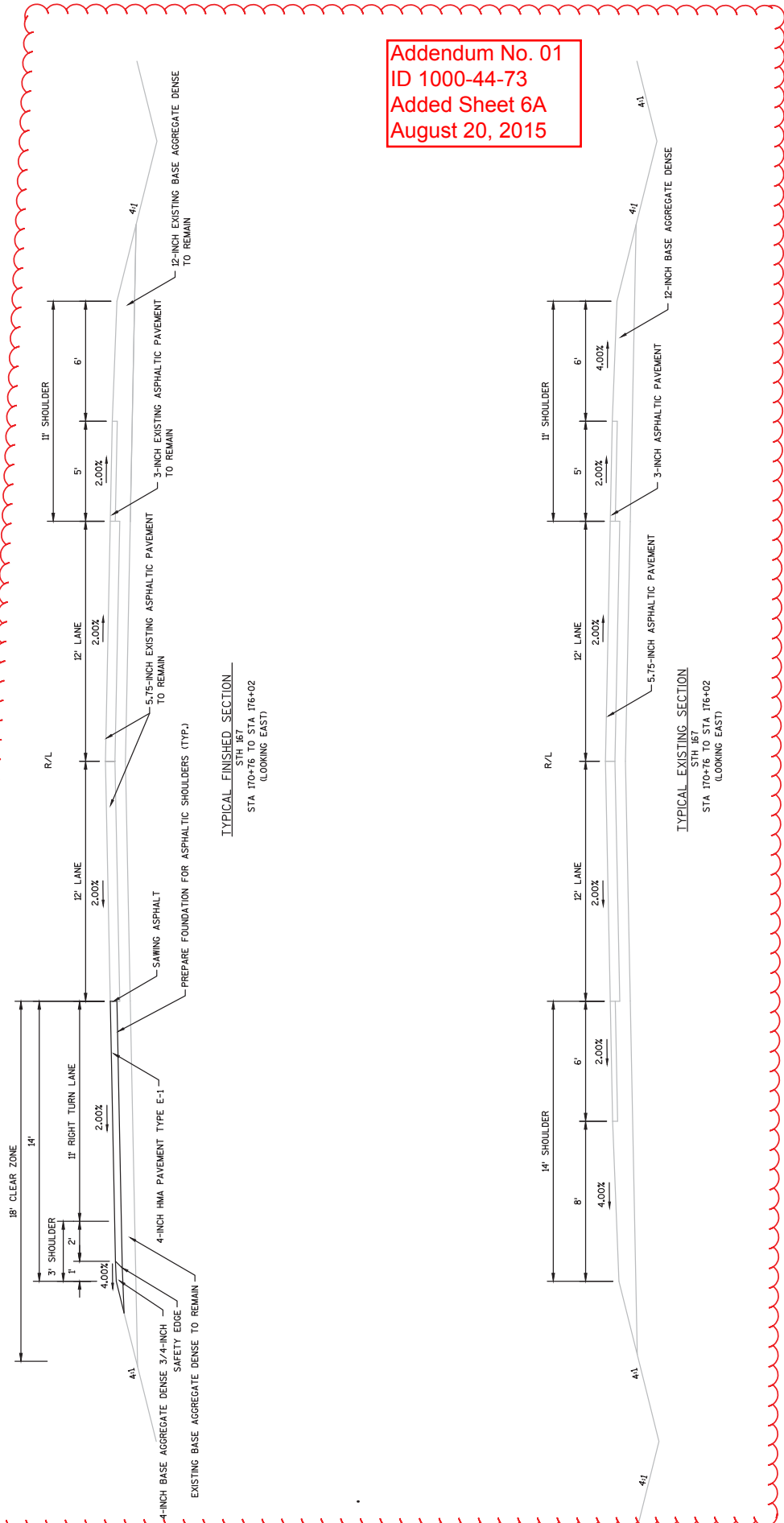
E

FILE NAME : X:\MO\JE\2014\140009-00\CAD2\1000-44-73\SHEETPLAN\02201-PO.DWG
1000-44-73 - 02201-PO - 02

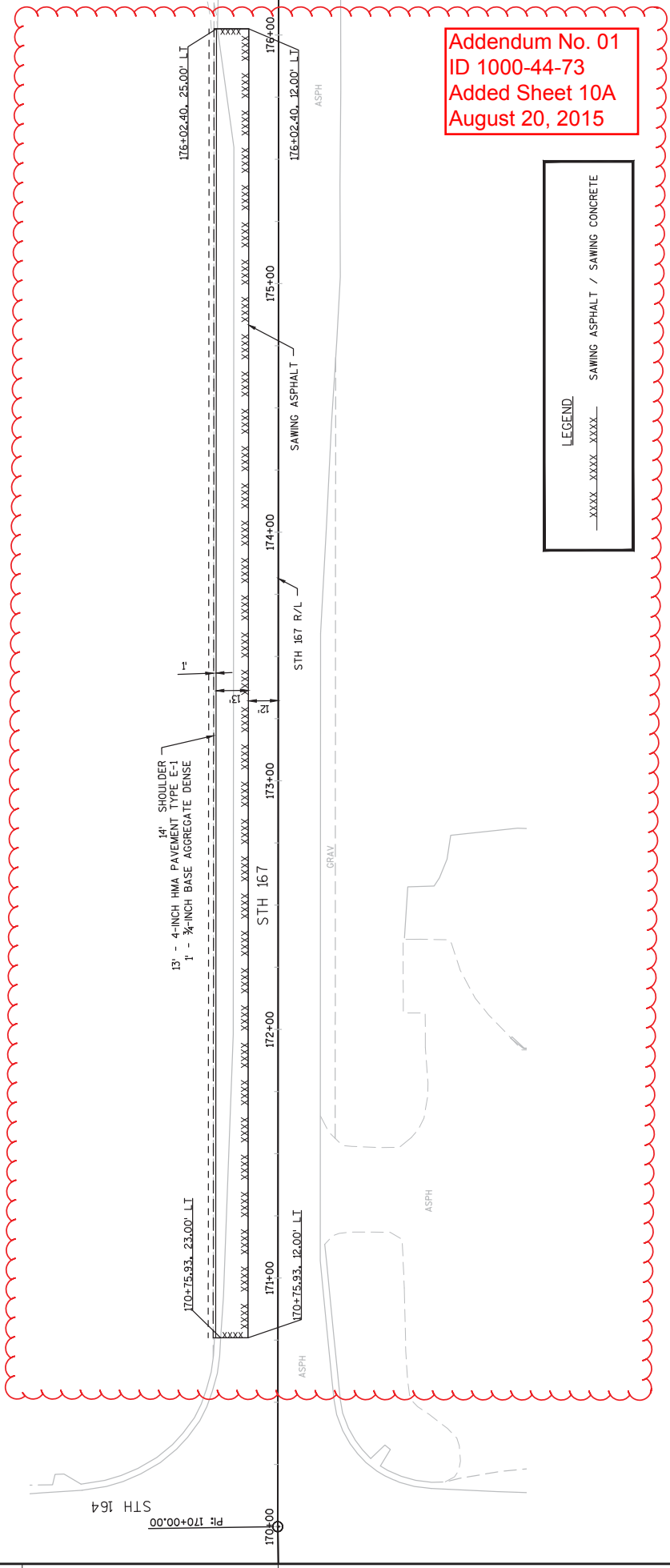
PLOT DATE : 8/17/2015 10:16 AM

PLOT NAME : HEIN, MIKE

PLOT SCALE : *****
WISDOT/CADD SHEET 42

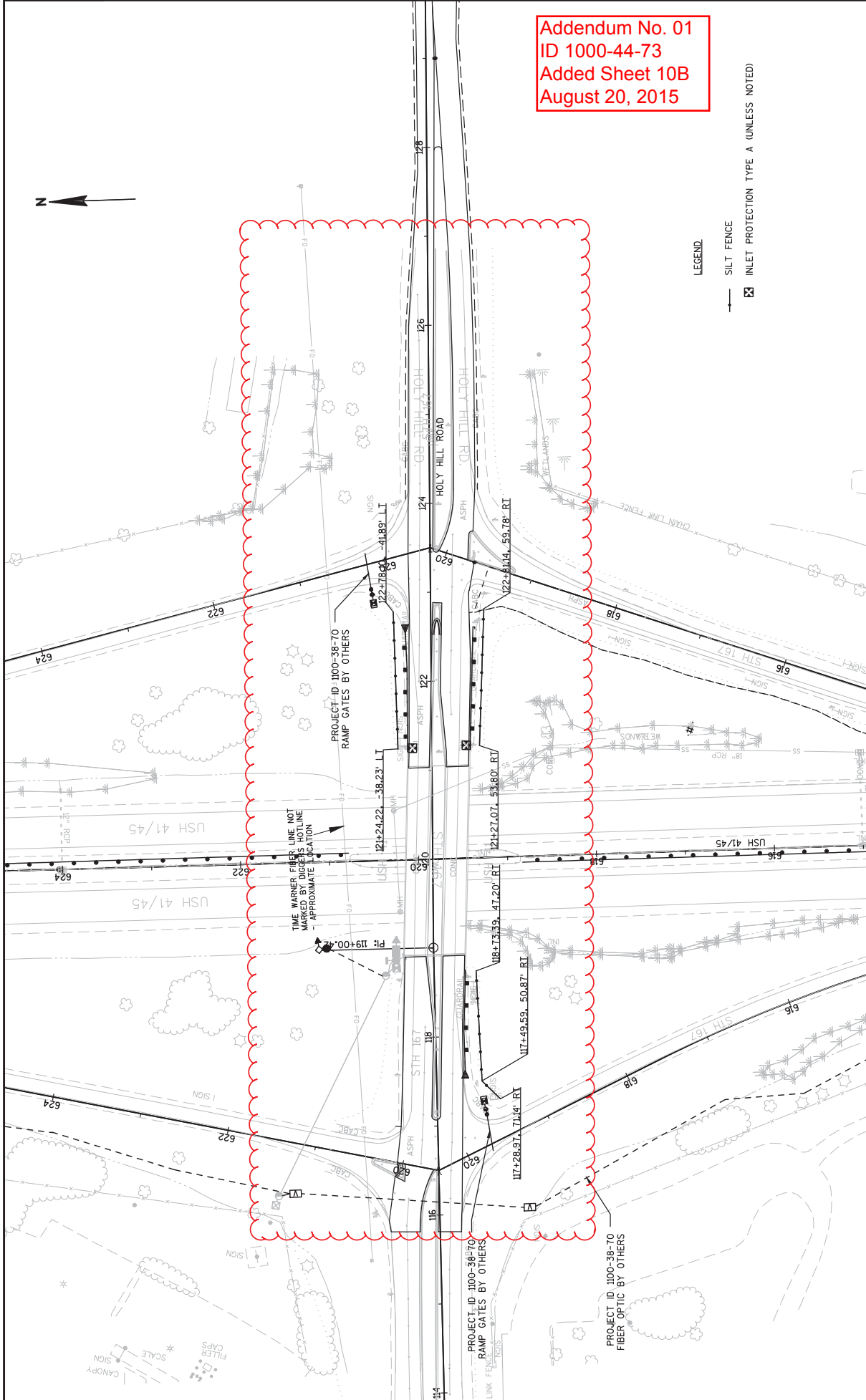


Addendum No. 01
 ID 1000-44-73
 Added Sheet 6A
 August 20, 2015



Addendum No. 01
 ID 1000-44-73
 Added Sheet 10A
 August 20, 2015

LEGEND
 -XXXX-XXXX-XXXX- SAWING ASPHALT / SAWING CONCRETE



Addendum No. 01
 ID 1000-44-73
 Added Sheet 10B
 August 20, 2015

LEGEND
 → SILT FENCE
 ☒ INLET PROTECTION TYPE A (UNLESS NOTED)

2



Addendum No. 01
ID 1000-44-73
Added Sheet 10C
August 20, 2015

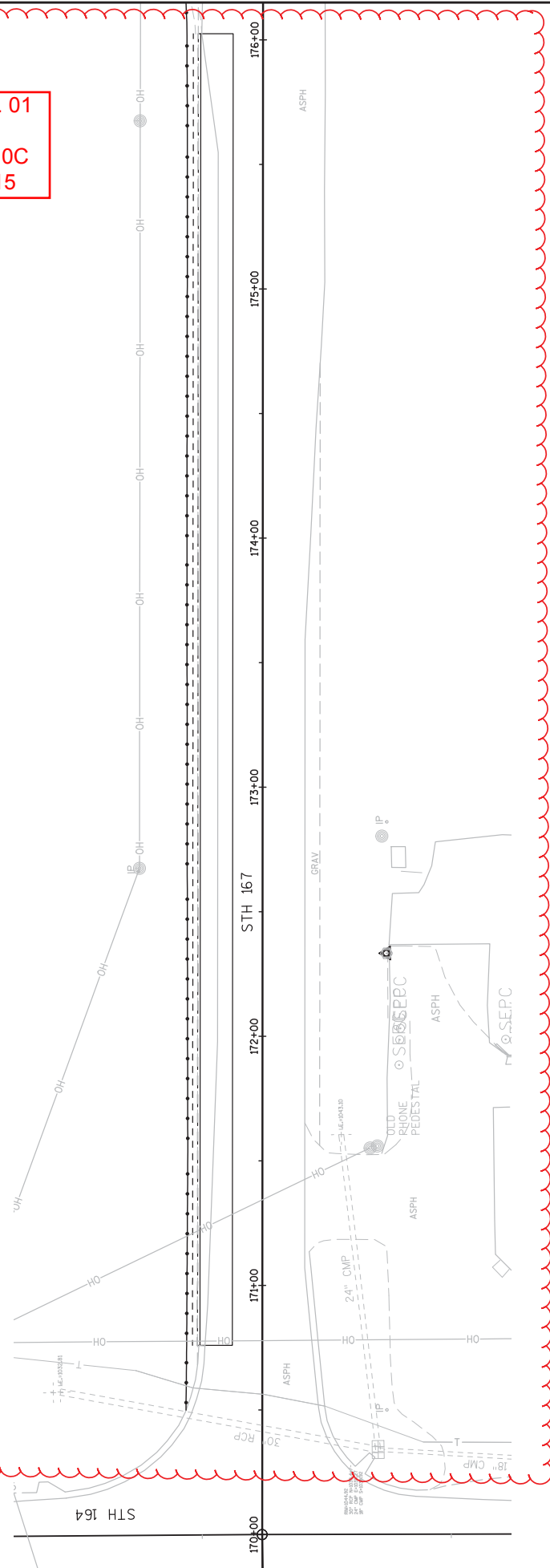
LEGEND

- SILT FENCE
- SLOPE INTERCEPT
- INLET PROTECTION
- TEMPORARY DITCH CHECK
- CULVERT PIPE DITCH CHECK
- SURFACE WATER FLOW

NOTES:

EROSION CONTROL FEATURES AS SHOWN ON THE PLAN ARE SUGGESTED LOCATIONS. EXACT LOCATIONS WILL BE DETERMINED BY THE ENGINEER IN THE FIELD.

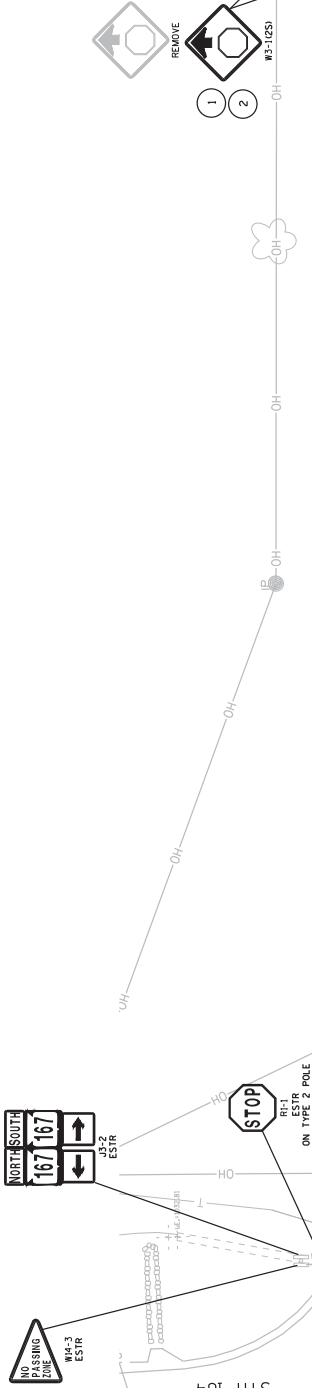
ALL DISTURBED AREAS TO BE RESTORED USING 4-INCH TOPSOIL - SEED, FERTILIZER AND EROSION MAT CLASS 1, TYPE B URBAN, UNLESS OTHERWISE INDICATED.



2

LEGEND

- EXISTING SIGN MOUNTED ON POST(S)
- EXISTING SIGN MOUNTED ON BRIDGE OR SIGN BRIDGE
- PROPOSED SIGN MOUNTED ON POST(S)
- PROPOSED SIGN MOUNTED ON BRIDGE OR SIGN BRIDGE
- VARIABLE MESSAGE SIGN
- EXISTING LIGHT OR SIGNAL POLE
- SIGN BRIDGE
- CANTILEVER SIGN BRIDGE
- DENOTES SIGN NUMBER
- (XXX) INDICATES SIGN SIZE
- (XXX) INDICATES YEAR OF SIGN



Addendum No. 01
 ID 1000-44-73
 Added Sheet 10D
 August 20, 2015



PAVEMENT MARKING LEGEND

- 1 PAVEMENT MARKING EPOXY 4-INCH (WHITE)
- 2 PAVEMENT MARKING EPOXY 4-INCH (YELLOW)
- 3 PAVEMENT MARKING EPOXY 4-INCH (WHITE) 12.5' LINE 37.5' GAP
- 4 PAVEMENT MARKING GROOVED CONTRAST PREFORMED PLASTIC TAPE 4-INCH (WHITE) 3" LINE 9" GAP
- 5 PAVEMENT MARKING EPOXY 8-INCH (WHITE)
- 6 PAVEMENT MARKING GROOVED CONTRAST PREFORMED PLASTIC TAPE 8-INCH
- 7 PAVEMENT MARKING GROOVED CONTRAST PREFORMED THERMOPLASTIC ARROWS TYPE 2
- 8 PAVEMENT MARKING GROOVED CONTRAST PREFORMED THERMOPLASTIC ARROWS TYPE 2
- 9
- 10 PAVEMENT MARKING CONTRAST GROOVED PREFORMED THERMOPLASTIC ARROWS TYPE 4
- 11 PAVEMENT MARKING CONTRAST GROOVED PREFORMED THERMOPLASTIC WORDS
- 12 PAVEMENT MARKING GROOVED PREFORMED THERMOPLASTIC WORDS
- 13 PAVEMENT MARKING CONTRAST GROOVED PREFORMED THERMOPLASTIC STOP LINE 18-INCH
- 14 PAVEMENT MARKING CONTRAST GROOVED PREFORMED THERMOPLASTIC STOP LINE 18-INCH
- 15 PAVEMENT MARKING GROOVED PREFORMED THERMOPLASTIC STOP LINE 18-INCH
- 16 PAVEMENT MARKING ISLAND NOSE EPOXY
- 17 PAVEMENT MARKING DIAGONAL EPOXY 24-INCH

STA. 176+62 - 176+09 LT
REMOVING PAVEMENT MARKINGS
EDGE LINE 4-INCH

STA. 170+32 LT
REMOVING PAVEMENT MARKINGS
STOP LINE 18-INCH

STH 164

170+00

172+00

173+00

174+00

175+00

176+00

STH 167

ASPH

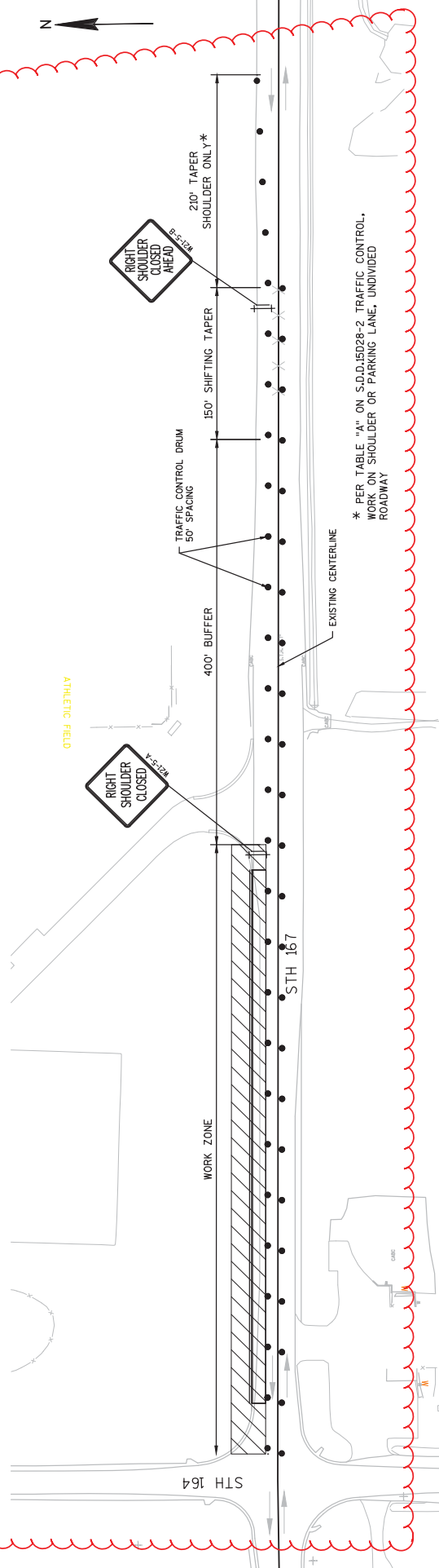
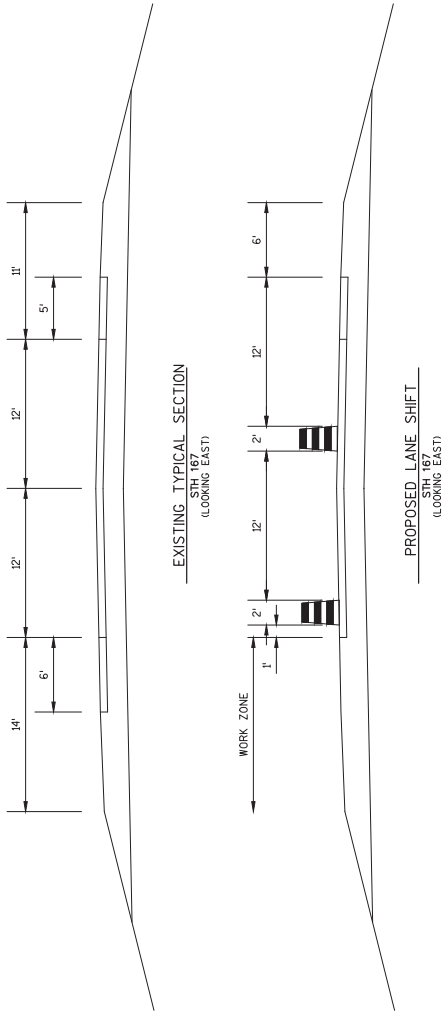
GRAY

ASPH

Addendum No. 01
ID 1000-44-73
Added Sheet 13A
August 20, 2015

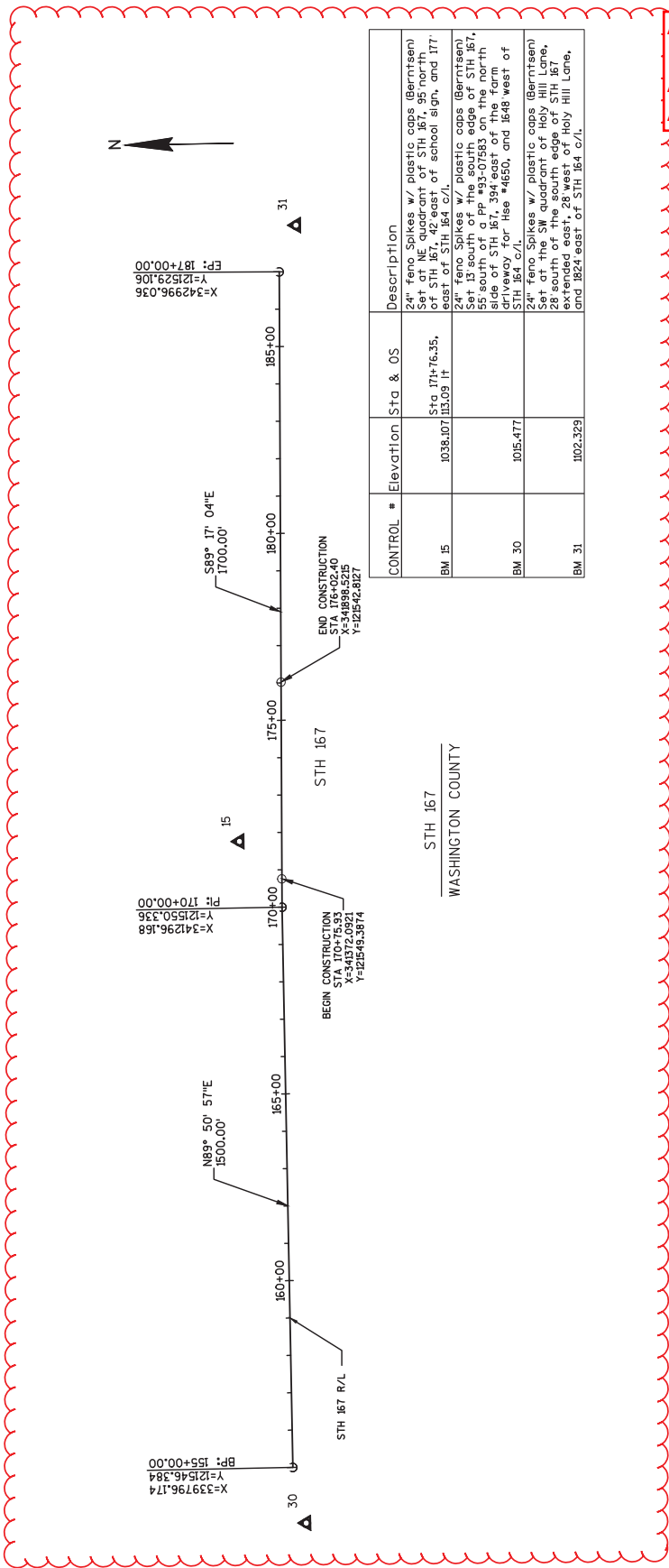
Addendum No. 01
 ID 1000-44-73
 Added Sheet 24A
 August 20, 2015

- NOTES:
 1. EXISTING STRIPING TO REMAIN IN PLACE. NO TEMPORARY STRIPING REQUIRED.
 2. SEE S.D.D.I5D28-2 TRAFFIC CONTROL, WORK ON PARKING LANE, UNDIVIDED ROADWAY FOR ADVANCED SIGNING.
 3. PROVIDE GAP IN DRUMS AS NECESSARY TO ALLOW VEHICLES ACCESS TO AND FROM SCHOOL DRIVEWAY.



* PER TABLE "A" ON S.D.D.I5D28-2 TRAFFIC CONTROL, WORK ON SHOULDER OR PARKING LANE, UNDIVIDED ROADWAY





Addendum No. 01
 ID 1000-44-73
 Added Sheet 28A
 August 20, 2015

CONTROL #	Elevation	Sta & OS	Description
BM 15	1038.107	Sta 174+76.35, 115.09 IT	24" feno Spikes w/ plastic caps (Berritsen) Set at NE quadrant of STH 167, 95 north of STH 167, 42 east of school sign, and 177 east of STH 164 c/l.
BM 30	1015.477		24" feno Spikes w/ plastic caps (Berritsen) Set 13 south of the south edge of STH 167, 55 south of a pp #33-07593 on the north side of STH 167, 394 east of the farm driveaway for Hse #4650, and 1648 west of STH 164 c/l.
BM 31	1102.329		24" feno Spikes w/ plastic caps (Berritsen) Set at the SW quadrant of Holy Hill Lane, 28 south of the south edge of STH 167, extended east, 28 west of Holy Hill Lane, and 1824 east of STH 164 c/l.

MAINTENANCE AND REPAIR OF HAUL ROADS (PROJECT) 1000-44-73

STATION	TO	STATION	LOCATION	618.0100
115+81	-	132+61	PROJECT LIMITS	EACH
TOTAL 0010				1

MOBILIZATION

STATION	TO	STATION	LOCATION	619.1000
115+81	-	132+61	HOLY HILL RD	EACH
TOTAL 0010				1

CONCRETE MEDIAN SLOPED NOSE

STATION	TO	STATION	LOCATION	620.0300
122+63	-	122+68	HOLY HILL RD MED ISLAND	SF
TOTAL 0010				20

SILT FENCE & SILT FENCE MAINTENANCE

STATION	TO	STATION	LOCATION	SILT FENCE	SILT FENCE
117+29	-	118+73	HOLY HILL RD, RT	628.1504	152
121+27	-	122+60	HOLY HILL RD, RT	628.1520	133
121+24	-	122+78	HOLY HILL RD, LT		154
TOTAL 0010				439	439

EROSION CONTROL & LANDSCAPING

STATION	TO	STATION	LOCATION	MOBILIZATION	EROSION	SEEDING
115+81	-	132+61	HOLY HILL RD	EMERGENCY	CLASS I	MIXTURE
117+73	-	118+71	HOLY HILL RD RT	EROSION	TYPE B	NO. 30
121+25	-	122+73	HOLY HILL RD LT	CONTROL	628.2004	630.0130
121+25	-	122+73	HOLY HILL RD RT	EACH	628.1910	629.0210
TOTAL 0010				1	263	8

Addendum No. 01
ID 1000-44-73
Revised Sheet 33
August 20, 2015

Addendum No. 01
 ID 1000-44-73
 Added Sheet 35A
 August 20, 2015

REMOVING ASPHALTIC SURFACE BUTT JOINTS

CATEGORY	STA	STA	LOCATION	SY
0010	170+76	176+02	LT	400
TOTAL				400

HMA PAVEMENT

CATEGORY	STA	STA	LOCATION	TON
0010	170+76	176+02	LT	165
TOTAL				165

BASE AGGREGATE DENSE

CATEGORY	STA	STA	LOCATION	TON
0010	170+76	176+02	LT	40
TOTAL				40

FOUNDATION

CATEGORY	STA	STA	LOCATION	TON
0010	170+76	176+02	LT	67
TOTAL				67

SILT FENCE

CATEGORY	STA	STA	LOCATION	LF
0010	170+50	176+19	LT	570
TOTAL				570

Category	Division	From/To Station	Location	Excavation Common		Salvaged/Unusable Pavement Material (4)	Available Material (5)	Unexpanded Fill	Expanded Fill Factor 1.15	Mass Ordinate +/- (14)	Comment:
				Cut (2)	(Item # 205.0100) EBS CY						
0010	1	170+76 TO 176+02	STH 167	96	0	29	67	0	0	67	
Division Subtotal											
				96	0	29	67	0	0	67	

- 1) Common Excavation is the sum of the Cut and EBS Excavation columns. Item number 205.0100
- 2) Salvaged/Unusable Pavement Material is included in Cut for individual Category
- 4) Salvaged/Unusable Pavement Material
- 14) The Mass Ordinate + or - Qty calculated for the Division. Plus quantity indicates an excess of material within the Division. Minus indicates a shortage of material within the Division.

Addendum No. 01
ID 1000-44-73
Added Sheet 35B
August 20, 2015

TRAFFIC CONTROL

CATEGORY	LOCATION	NUMBER	DAY	TOTAL	NUMBER	DAY	TOTAL	NUMBER	DAY	TOTAL	NUMBER	DAY	TOTAL
0010	STH 164/STH 167 INTERSECTION	50	5	250	2	5	10	4	5	20	7	5	35
		TOTAL		250			10			20			35

643.0300 TRAFFIC CONTROL DRUMS
 643.0420 TRAFFIC CONTROL BARRICADES TYPE III
 643.0705 TRAFFIC CONTROL WARNING LIGHTS
 643.0900 TRAFFIC CONTROL SIGNS

PAVEMENT MARKING

CATEGORY	STATION	STATION	LOCATION	LF	COMMENT
0010	170+32	170+32	LT	---	RIGHT TURN ARROW ONLY
	170+60	170+60	LT	---	RIGHT TURN ARROW ONLY
	171+66	171+66	LT	---	RIGHT TURN ARROW CHANNELIZING LINE
	172+56	172+56	LT	---	RT EDGELINE
	170+32	172+76	LT	244	
	170+76	176+03	LT	527	
	TOTAL			527	35

646.0106 SPV.0090.02 GROOVED PREFORMED THERMOPLASTIC ARROW TYPE 2 (WHITE) LF EACH
 SPV.0060.01 GROOVED PREFORMED THERMOPLASTIC WORDS (WHITE) EACH
 SPV.0090.01 GROOVED PREFORMED THERMOPLASTIC STOP LINE 18-INCH LF

REMOVING PAVEMENT MARKINGS

CATEGORY	STATION	STATION	LOCATION	LF	COMMENTS
0010	170+32	170+32	LT	35	STOP BAR 18-INCH
	170+32	170+76	LT	44	CHANNELIZING 8-INCH
	172+82	175+02	LT	220	EDGELINE WHITE
	TOTAL			299	

646.0600 REMOVING PAVEMENT MARKINGS

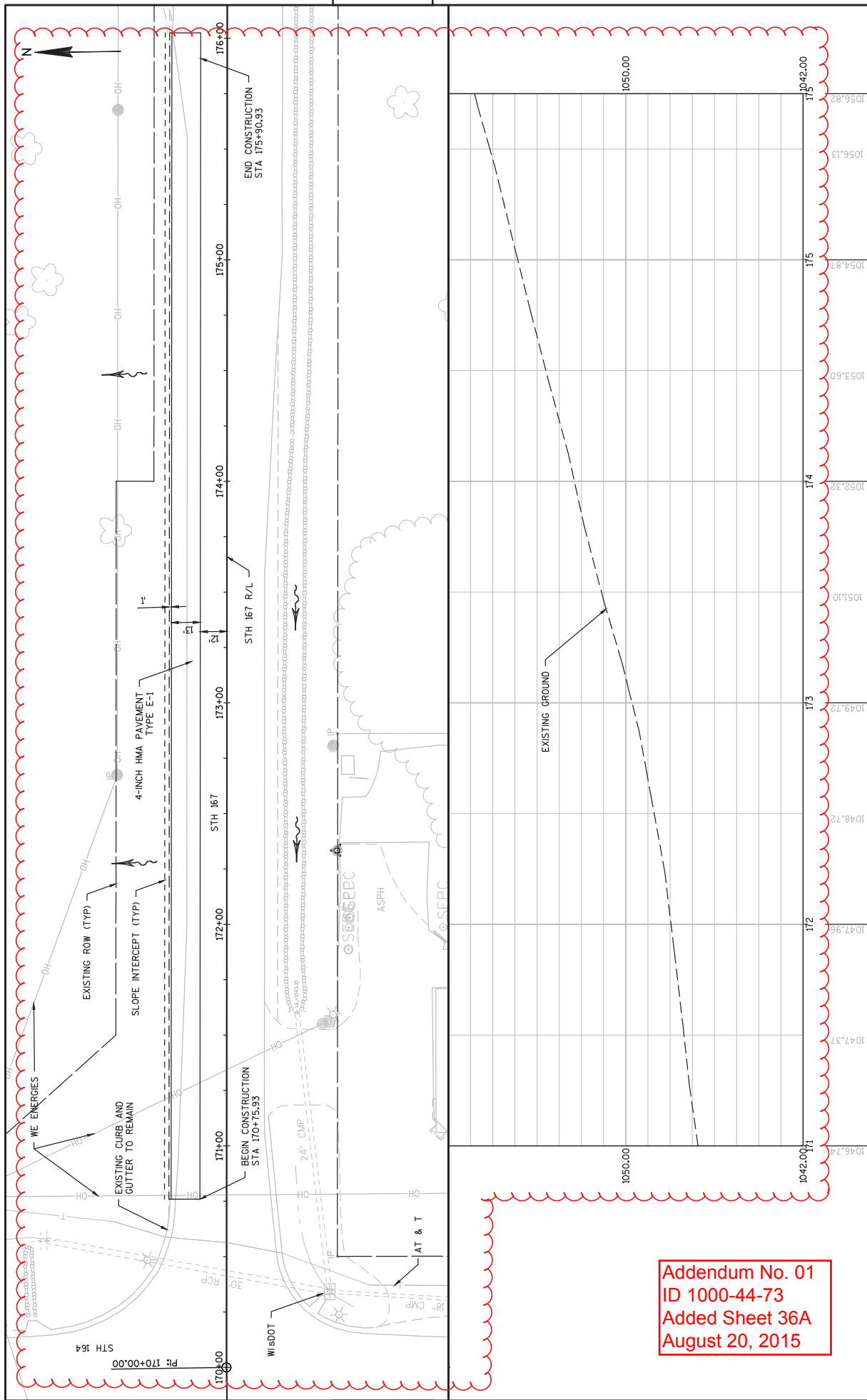
SAWING

CATEGORY	STATION	STATION	LOCATION	LF	COMMENTS
0010	170+76	176+02	LT	550	SAWING ASPHALT
	TOTAL			550	

690.0150 SAWING ASPHALT

SIGN NO.	SIGN CODE & SIZE	SIGN MESSAGE	SIGN SIZE		SIGN TYPE II REFLECTIVE	REM SIGNS TYPE II [EA]	638.3000 REM SMALL SIGN SUP [EA]	634.0622 WOOD POSTS 4" X 6" X 22' [EA]	634.0816 POSTS TUBULAR STEEL 2" X 2" X 16' [EA]	MOUNT ON SAME POST AS SIGN #	REMARKS / NEW SIGN LOCATION						
			W [IN.]	H [IN.]													
1	W3-1 (2S)	STOP AHEAD	36	X 36	9.000	1	1	1	1								
2	W3-1 (2S)	STOP AHEAD	36	X 36	9.000	1	1	1	1								
UNDISTRIBUTED																	
TOTALS											18.000	2	2	2	2		

Addendum No. 01
ID 1000-44-73
Added Sheet 35C
August 20, 2015



Addendum No. 01
 ID 1000-44-73
 Added Sheet 36A
 August 20, 2015

Addendum No. 01
ID 1000-44-73
Added Sheet 81A
August 20, 2015

STH 164/STH 167 INTERSECTION

STATION	Distance	AREA (SF)		Incremental Vol (CY) (Unadjusted)			Cumulative Vol (CY)		Mass Ordinate Note 8
		Cut	Salvaged/Unusable Pavement Material	Fill	Cut Note 1	Salvaged/Unusable Pavement Material Note 2	Fill Note 3	Cut 1.00 Note 1	
170+75.93		4.9	1.5	0.0	0	0	0	0	0
171+00.00	24.07	4.9	1.5	0.0	4	0	4	0	3
171+50.00	50.00	4.9	1.5	0.0	9	3	14	0	9
172+00.00	50.00	4.9	1.5	0.0	9	3	23	0	16
172+50.00	50.00	4.9	1.5	0.0	9	3	32	0	22
173+00.00	50.00	4.9	1.5	0.0	9	3	41	0	28
173+50.00	50.00	4.9	1.5	0.0	9	3	50	0	35
174+00.00	50.00	4.9	1.5	0.0	9	3	59	0	41
174+50.00	50.00	4.9	1.5	0.0	9	3	68	0	48
175+00.00	50.00	4.9	1.5	0.0	9	3	77	0	54
175+50.00	50.00	4.9	1.5	0.0	9	3	87	0	60
176+00.00	50.00	4.9	1.5	0.0	9	3	96	0	67
176+02.40	2.40	4.9	1.5	0.0	0	0	96	0	67

96	29	0
----	----	---

- 1) Cut includes Salvaged/Unusable Pavement material
- 2) This does not show up in cross sections
- 3) Does not include Unusable Pavement Exc volume
- 8) If Marsh or EBS to be backfilled with Cut or Borrow: [(Cut + Marsh Exc + EBS) - ((Fill - Reduced Marsh in Fill) - (Reduced EBS in Fill) - Expanded Rock) * Fill Factor]

SCHEDULE OF ITEMS

REVISED:

CONTRACT:
20150915001PROJECT(S):
1000-44-73FEDERAL ID(S):
N/A

CONTRACTOR : _____

LINE NO	ITEM DESCRIPTION	APPROX. QUANTITY AND UNITS	UNIT PRICE		BID AMOUNT	
			DOLLARS	CTS	DOLLARS	CTS

SECTION 0001 Contract Items

0010	204.0115 Removing Asphaltic Surface Butt Joints	1,261.000 SY
0020	204.0125 Removing Asphaltic Surface Milling	1,845.000 TON
0030	204.0150 Removing Curb & Gutter	110.000 LF
0040	204.0165 Removing Guardrail	380.000 LF
0050	211.0100 Prepare Foundation for Asphaltic Paving (project) 01. 1000-44-73	LUMP	LUMP	.	.	.
0060	211.0400 Prepare Foundation for Asphaltic Shoulders	22.000 STA
0070	213.0100 Finishing Roadway (project) 01. 1000-44-73	1.000 EACH
0080	305.0110 Base Aggregate Dense 3/4-Inch	271.000 TON
0090	305.0120 Base Aggregate Dense 1 1/4-Inch	1,052.000 TON
0100	416.0610 Drilled Tie Bars	10.000 EACH

SCHEDULE OF ITEMS

REVISED:

CONTRACT:
20150915001PROJECT(S):
1000-44-73FEDERAL ID(S):
N/A

CONTRACTOR : _____

LINE NO	ITEM DESCRIPTION	APPROX. QUANTITY AND UNITS	UNIT PRICE		BID AMOUNT	
			DOLLARS	CTS	DOLLARS	CTS
0110	455.0105 Asphaltic Material PG58-28	143.000 TON
0120	455.0605 Tack Coat	233.000 GAL
0130	460.1103 HMA Pavement Type E-3	2,210.000 TON
0140	460.2000 Incentive Density HMA Pavement	1,420.000 DOL	1.00000	.	1420.00	.
0150	460.4000 HMA Cold Weather Paving	552.000 TON
0160	460.4110.S Reheating HMA Pavement Longitudinal Joints	1,372.000 LF
0170	465.0305 Asphaltic Surface Safety Islands	1.700 TON
0180	601.0553 Concrete Curb & Gutter 4-Inch Sloped 36-Inch Type D	50.000 LF
0190	611.0654 Inlet Covers Type V	2.000 EACH
0200	611.8120.S Cover Plates Temporary	2.000 EACH
0210	614.0010 Barrier System Grading Shaping Finishing	2.000 EACH

SCHEDULE OF ITEMS

REVISED:

CONTRACT:
20150915001PROJECT(S):
1000-44-73FEDERAL ID(S):
N/A

CONTRACTOR : _____

LINE NO	ITEM DESCRIPTION	APPROX. QUANTITY AND UNITS	UNIT PRICE		BID AMOUNT	
			DOLLARS	CTS	DOLLARS	CTS
0220	614.2300 MGS Guardrail 3	200.000
		LF				
0230	614.2500 MGS Thrie Beam Transition	78.800
		LF				
0240	614.2610 MGS Guardrail Terminal EAT	2.000
		EACH				
0250	614.2620 MGS Guardrail Terminal Type 2	1.000
		EACH				
0260	618.0100 Maintenance And Repair of Haul Roads (project) 01. 1000-44-73	1.000
		EACH				
0270	619.1000 Mobilization	1.000
		EACH				
0280	620.0300 Concrete Median Sloped Nose	20.000
		SF				
0290	628.1504 Silt Fence	1,009.000
		LF				
0300	628.1520 Silt Fence Maintenance	1,009.000
		LF				
0310	628.1905 Mobilizations Erosion Control	1.000
		EACH				

SCHEDULE OF ITEMS

REVISED:

CONTRACT:
20150915001PROJECT(S):
1000-44-73FEDERAL ID(S):
N/A

CONTRACTOR : _____

LINE NO	ITEM DESCRIPTION	APPROX. QUANTITY AND UNITS	UNIT PRICE		BID AMOUNT	
			DOLLARS	CTS	DOLLARS	CTS
0320	628.1910 Mobilizations Emergency Erosion Control	1.000 EACH	.		.	
0330	628.2004 Erosion Mat Class I Type B	263.000 SY	.		.	
0340	628.7010 Inlet Protection Type B	2.000 EACH	.		.	
0350	629.0210 Fertilizer Type B	0.200 CWT	.		.	
0360	630.0130 Seeding Mixture No. 30	8.000 LB	.		.	
0370	638.2602 Removing Signs Type II	3.000 EACH	.		.	
0380	641.8100 Overhead Sign Support (structure) 01. S-66-241	LUMP	LUMP		.	
0390	643.0100 Traffic Control (project) 01. 1000-44-73	1.000 EACH	.		.	
0400	643.0300 Traffic Control Drums	3,140.000 DAY	.		.	
0410	643.0420 Traffic Control Barricades Type III	400.000 DAY	.		.	
0420	643.0500 Traffic Control Flexible Tubular Marker Posts	37.000 EACH	.		.	

SCHEDULE OF ITEMS

REVISED:

CONTRACT:
20150915001PROJECT(S):
1000-44-73FEDERAL ID(S):
N/A

CONTRACTOR : _____

LINE NO	ITEM DESCRIPTION	APPROX. QUANTITY AND UNITS	UNIT PRICE		BID AMOUNT	
			DOLLARS	CTS	DOLLARS	CTS
0430	643.0600 Traffic Control Flexible Tubular Marker Bases	37.000 EACH
0440	643.0705 Traffic Control Warning Lights Type A	800.000 DAY
0450	643.0715 Traffic Control Warning Lights Type C	830.000 DAY
0460	643.0800 Traffic Control Arrow Boards	33.000 DAY
0470	643.0900 Traffic Control Signs	1,075.000 DAY
0480	643.0920 Traffic Control Covering Signs Type II	31.000 EACH
0490	643.1000 Traffic Control Signs Fixed Message	76.500 SF
0500	643.1050 Traffic Control Signs PCMS	92.000 DAY
0510	643.2000 Traffic Control Detour (project) 01. 1000-44-73	1.000 EACH
0520	643.3000 Traffic Control Detour Signs	890.000 DAY
0530	646.0106 Pavement Marking Epoxy 4-Inch	10,437.000 LF

SCHEDULE OF ITEMS

REVISED:

CONTRACT:
20150915001PROJECT(S):
1000-44-73FEDERAL ID(S):
N/A

CONTRACTOR : _____

LINE NO	ITEM DESCRIPTION	APPROX. QUANTITY AND UNITS	UNIT PRICE		BID AMOUNT	
			DOLLARS	CTS	DOLLARS	CTS
0540	646.0600 Removing Pavement Markings	1,437.000 LF
0550	646.0881.S Pavement Marking Grooved Wet Reflective Tape 4-Inch	200.000 LF
0560	646.0883.S Pavement Marking Grooved Wet Reflective Tape 8-Inch	510.000 LF
0570	647.0456 Pavement Marking Curb Epoxy	45.000 LF
0580	647.0606 Pavement Marking Island Nose Epoxy	1.000 EACH
0590	647.0726 Pavement Marking Diagonal Epoxy 12-Inch	112.000 LF
0600	649.0400 Temporary Pavement Marking Removable Tape 4-Inch	8,700.000 LF
0610	649.1200 Temporary Pavement Marking Stop Line Removable Tape 18-Inch	28.000 LF
0620	650.5000 Construction Staking Base	1,568.000 LF
0630	650.5500 Construction Staking Curb Gutter and Curb & Gutter	50.000 LF

SCHEDULE OF ITEMS

REVISED:

CONTRACT:
20150915001PROJECT(S):
1000-44-73FEDERAL ID(S):
N/A

CONTRACTOR : _____

LINE NO	ITEM DESCRIPTION	APPROX. QUANTITY AND UNITS	UNIT PRICE		BID AMOUNT	
			DOLLARS	CTS	DOLLARS	CTS
0640	650.8000 Construction Staking Resurfacing Reference	1,800.000 LF
0650	650.9910 Construction Staking Supplemental Control (project) 01. 1000-44-73	LUMP	LUMP	.	.	.
0660	690.0150 Sawing Asphalt	1,867.000 LF
0670	690.0250 Sawing Concrete	12.000 LF
0680	SPV.0060 Special 01. Pavement Marking Grooved Preformed Thermoplastic Arrows Type 2	8.000 EACH
0690	SPV.0060 Special 02. Pavement Marking Grooved Preformed Thermoplastic Words	7.000 EACH
0700	SPV.0090 Special 01. Pavement Marking Grooved Preformed Thermoplastic Stop Bars 18-Inch	142.000 LF
0710	SPV.0105 Special 01. Removing Overhead Sign Support and Footing	LUMP	LUMP	.	.	.
0720	205.0100 Excavation Common	96.000 CY
0730	460.1101 HMA Pavement Type E-1	165.000 TON

SCHEDULE OF ITEMS

REVISED:

CONTRACT:
20150915001

PROJECT(S):
1000-44-73

FEDERAL ID(S):
N/A

CONTRACTOR : _____

LINE NO	ITEM DESCRIPTION	APPROX. QUANTITY AND UNITS	UNIT PRICE		BID AMOUNT	
			DOLLARS	CTS	DOLLARS	CTS
0740	634.0816 Posts Tubular Steel 2x2-Inch X 16-FT	2.000 EACH	.		.	
0750	638.3000 Removing Small Sign Supports	2.000 EACH	.		.	
0760	637.2210 Signs Type II Reflective H	18.000 SF	.		.	
0770	SPV.0090 Special 02. Pavement Marking Grooved Preformed Plastic Tape 8-Inch	244.000 LF	.		.	
	SECTION 0001 TOTAL				.	
	TOTAL BID				.	