



Wisconsin Department of Transportation

August 20, 2015

Division of Transportation Systems Development

Bureau of Project Development
 4802 Sheboygan Avenue, Rm 601
 P O Box 7916
 Madison, WI 53707-7916

Telephone: (608) 266-1631
 Facsimile (FAX): (608) 266-8459

NOTICE TO ALL CONTRACTORS:

Proposal #02: 1060-44-70, WISC 2015484
East West Freeway
CTH P to CTH F
ID 94
Waukesha County

Letting of September 15, 2015

This is Addendum No. 01, which provides for the following:

Special Provisions

Revised Special Provisions	
Article No.	Description
7	Utilities
13	Information to Bidders, U.S. Army Corps of Engineers Section 404 Permit

Added Special Provisions	
Article No.	Description
78	EBS Excavation, Item SPV.0035.0001
79	Field Office Fixed, Item SPV.0105.0002

Schedule of Items

Revised Bid Item Quantities					
Bid Item	Item Description	Unit	Old Quantity	Revised Quantity	Proposal Total
205.0100	Common Excavation (**P**)	CY	32,435	27,251	27,251
208.0100	Borrow (**P**)	CY	639	639	639

Added Bid Item Quantities					
Bid Item	Item Description	Unit	Old Quantity	Revised Quantity	Proposal Total
SPV.0035.0001	EBS Excavation	CY	0	5,184	5,184
SPV.0105.0002	Field Office Fixed	LS	0	1	1

Deleted Bid Item Quantities					
Bid Item	Item Description	Unit	Old Quantity	Revised Quantity	Proposal Total
642.5401	Field Office Type D	EACH	1	0	0

Plan Sheets

Revised Plan Sheets	
Plan Sheet	Plan Sheet Title (brief description of changes to sheet)
2	Updated utility contacts
50	Added Centurylink facilities
55	Added Centurylink facilities
61	Added Centurylink facilities
66	Added Centurylink facilities
421	Divided Common Excavation column two bid items, Common Excavation and EBS Excavation
433	Replaced Field Office Type D with SPV item for Field Office Fixed

Added Plan Sheets	
Plan Sheet	Plan Sheet Title (brief description of why sheet was added)
688A	Added sheet for B-67-69 bridge plan
688B	Added sheet for B-67-69 bridge plan
688C	Added sheet for B-67-69 bridge plan
688D	Added sheet for B-67-69 bridge plan
688E	Added sheet for B-67-69 bridge plan
688F	Added sheet for B-67-69 bridge plan

Deleted Plan Sheets	
Plan Sheet	Plan Sheet Title (brief description of why sheet was deleted)
689	In-correct plan sheet for B-67-69

The responsibility for notifying potential subcontractors and suppliers of these changes remains with the prime contractor.

Sincerely,

Mike Coleman

Proposal Development Specialist
Proposal Management Section

ADDENDUM NO. 01

1060-44-70

August 20, 2015

Special Provisions

7. Utilities.

Delete entire article language and replace with the following:

The provisions of administrative rule TRANS 220 apply to this project.

Underground and overhead utility facilities are located within the project limits. Utility adjustments are required for this construction project as noted below. Coordinate construction activities with a call to Diggers Hotline or a direct call to the utilities that have facilities in the area as required per statutes. Use caution to insure the integrity of underground facilities and maintain code clearances from overhead facilities at all times.

Contact the local governing road authority to find out if there are any locally owned facilities within the project limits.

Contact each utility company listed in the plans, prior to preparing bids, to obtain current information on the status of existing and any new utility relocation work.

107 – SER2 (20101021)

The following utilities have facilities within the construction limits.

- WisDOT Lighting has existing underground and overhead lighting facilities within the project limits. Remove, adjust, reconstruct, abandon and leave in place the lighting facilities as shown in the plans.
- WisDOT Signals has existing underground and overhead signal facilities within the project limits. Remove, adjust, reconstruct, abandon and leave in place the signal facilities as shown in the plans.

The following utilities have facilities within the construction limits, however, no adjustments are anticipated:

- We Energies – gas and electric
- Town of Delafield
- WisDOT STOC
- Time Warner Cable – aerial and underground facilities
- PAETEC Business Services – buried fiber cable
- ATC Management, Inc. – Overhead 138,000 volt transmission lines
- AT&T Wisconsin – communications

- AT&T Corporation
- Summit Utility District 2 - Sanitary Sewer
- City of Pewaukee – Water and Sewer
- Midwest Fiber Networks
- Level 3
- Century Link
- TDS Metrocom
- WisDOT ATR

AT&T Corporation has fiber that runs along the eastbound IH 94 R/W from CTH P to STH 83. AT&T Corporation is not anticipating the need for relocation and the facility will remain in service during construction. AT&T plant protection personnel should be present during any work near the duct package. Notify AT&T Corporation representative Charles Conely at 608-338-3015, three working days prior to any work near the duct package to schedule a plant protection personal representative to be on-site during construction.

We Energies Gas and Electric have facilities within the construction limits, but is not anticipating the need for relocation. It is imperative that the highway contractor contact We Energies if removing any gas facilities or electrical underground cables, to verify that they have been abandoned and carry no natural gas or electrical current. The contractor must not assume that unmarked facilities have been abandoned. At no time is it acceptable to push, pull, cut or drill an unmarked facility without explicit consent from We Energies. Contractor must call the We Energies 24 hour Dispatch lines to arrange for this verification. We Energies Electric Dispatch #1-800-662-4797; We Energies Gas Dispatch #1-800-261-5325.

We Energies Gas requires a watchdog to be set up through Digger’s Hotline during any ground disturbances around the 8-inch ST gas main running along STH 83 and the 6-inch HP gas main running along Maple Avenue.

If utility conflicts occur, they will be adjusted during construction in coordination with the contractor.

13. Information to Bidders, U.S. Army Corps of Engineers Section 404 Permit.

Add the following paragraph:

As part of the permit, access to the work area for restoring drainage to the ditch along I-94 WB under the CTH F overpass structures shall be from the outside shoulder at the west end of concrete barrier protecting the bridge pier. Access shall not be permitted from the east side of CTH F overpass structures.

78. EBS Excavation, SPV.0035.0001.

A Description

Follow section 205.1 of the standard specifications.

B Materials

Follow section 205.2 of the standard specifications.

Delete section 205.2.1 paragraph (2) of the standard specifications.

C Construction

Follow section 205.3.4 of the standard specifications.

D Measurement

Follow section 205.4 of the standard specifications.

The department will measure EBS Excavation by the cubic yard, acceptably completed.

E Payment

Follow section 205.5 of the standard specifications.

The department will pay for measured quantities at the contract unit price under the following bid item:

ITEM NUMBER	DESCRIPTION	UNIT
SPV.0035.001	EBS Excavation	CY

79. Field Office Fixed, SPV.0105.0002.

Replace standard spec 642 with the following:

A Description

Furnish, equip, and maintain field office facilities.

B Materials

B.1 General

The contractor is encouraged to provide a permanent/fixed facility for use as a field office that is an existing office building, or an existing building converted to office-type use, located not more than one mile (1.0 mile) from the project limits and approved by the engineer. In the case such a suitable permanent/fixed facility cannot be located, a temporary/modular facility shall be provided.

Supply a first aid kit in each field office provided under the contract. Ensure the kits are readily accessible to project personnel. Check and replenish the contents of each kit at least once a week. Ensure that each kit contains, at a minimum, a supply of latex-free examination gloves, CPR masks, adhesive tape, pressure and cling bandages, antiseptic wipes, bite/sting swabs, cold packs, and safety goggles.

Equip the facilities with Class A, B, and C fire extinguisher(s) conforming to all applicable codes and NFPA standards.

Minimum interior useable floor space shall be 2000 square feet, not including shared spaces, such as plan review areas, conference rooms, meeting areas, hallways, and restrooms.

Provide a suitably sized, open meeting area, including tables and folding chairs to accommodate regularly scheduled meetings of 50 people, as approved by the engineer.

Provide 10 large cubicles, including a desk, shelf, and a 4-drawer file cabinet, a coat rack and two small waste baskets with liners. Modular cubicle workstation furniture may be used if approved by the engineer. Provide four private rooms (minimum size 10' X 10'), equipped, in addition to the above, with a four shelf bookcase, and a 48" x 36" whiteboard with dry erase markers. These rooms shall have an interior door with a lockset.

Provide one ergonomically correct office chair in working condition, with, at a minimum, the following features, for each desk:

- Five-legged base with casters.
- High backrest.
- Seat adjustable from 15 inches (381 mm) to 22 inches (558 mm) from the floor with a seamless waterfall, rounded front edge.
- Adjustable arms.

Provide the field office with 20 high-speed computer Internet connection(s) at a setting of no less than 1 MB and up to 10 MB. The high-speed Internet connection must consist of a “small office/home networking” package. The package shall include a Dynamic IP Address (DHCP) and a Modem Router. The package must accommodate IPsec based VPN products. Provide a high speed wireless network with connection to a separate copier/printer/scanner which has the ability to copy, print and scan 11” x 17” paper.

Provide one new, leased, high-capacity color printer/photocopier/scanner capable of printing and copying up to 11” x 17” paper, with the ability to perform duplexing, sorting, stapling, and multiple sheet auto feeding, with a built-in scanner with the capability to scan black and white and color up to 11” x 17” at a minimum of 600 dpi, and with a network connection, as approved by the engineer.

Maintain the field office equipment and provide supplies for the photocopiers as requested by the engineer.

Provide and maintain an adequate supply of bottled drinking water with cups. Provide one 18 cubic foot minimum size refrigerator with freezer and one microwave (900-watt minimum). Provide small waste basket liners, tall kitchen garbage bags and disinfecting wet wipes for the duration of the project, and as also requested by the engineer.

Provide clearly marked recycling and waste receptacles (9 gallon minimum) within the field office, and separate recycling and waste dumpsters near the field office. Cover outdoor containers to keep out rain, snow, and wind-driven debris. Provide regularly scheduled recycling and waste pick-up.

Maintain interior sanitary facilities conforming to State and local health requirements, in clean and good working condition, and stock with supplies (toilet paper, liquid hand soap, paper towels) for the duration of the contract, and as also requested by the engineer.

Provide for weekly professional cleaning of the field office during regular business hours.

Equip these facilities with suitable artificial lighting and adequate heating and air conditioning equipment along with the necessary fuel to maintain a minimum temperature of 68F (20C) during the hours occupied.

The contractor may furnish, if the contract allows, the field offices jointly in cooperation with other contractors on designated projects.

Do not combine field offices, or combine them with, or attach them to, any buildings used by the contractor, unless the engineer allows in writing.

The field office shall remain available for department use for 60 calendar days beyond the contract completion date or until the engineer approves its closure or removal.

These field facilities are for the sole use of the department.

B.2 Permanent/Fixed Facility Field Office

Provide a permanent/fixed facility that is an existing office building, or an existing building converted to office-type use, meeting all applicable codes and standards, located not more than one mile (1.0 mile) from the project limits and approved by the engineer.

Include an adjacent, no-fee, lighted parking lot large enough to accommodate the needs of the field offices at peak usage, as approved by the engineer. Maintain the parking lot and egress, including snow removal.

Do not begin construction operations requiring the use of the field offices by the department until the required field offices are furnished, fully equipped, and made ready for use as the engineer directs.

B.3 Temporary/Modular Facility Field Office

Provide rented, modular field offices that are designed as mobile office units, no more than five years old, or other engineer-approved types that are floored, roofed, and weatherproofed, and have a minimum ceiling height of 8 feet-0 inches (2.44 m). Provide R-11 or better insulation in all walls, floors, and ceilings. Provide skirting around the perimeter of the mobile office units.

Equip these facilities with suitable artificial lighting and adequate central heating and cooling equipment designed to maintain a comfortable temperature during occupied hours, at the approval of the engineer.

Provide electrical power by connecting to the existing power grid.

Provide and maintain suitable interior or exterior sanitary facilities conforming to State and local health requirements, in clean and good working condition, and stock with sanitary supplies including hand sanitizer for the duration of the contract, at the approval of the engineer.

Provide a sufficient number and size of operable windows, located in order to promote effective cross ventilation, and equipped with required locks and metal screens. Windows are to be of the horizontal slider type. All rooms are to have at least one window.

The exterior doors shall be constructed of steel and equipped with heavy-duty locks with attached security plates. There shall be vandal-resistant exterior lights located at all exterior doors. Provide steps at all exterior doors.

Provide a level, graded CABC (at a minimum) site for field offices, including an adjacent, no-fee parking lot large enough to accommodate the needs of the field offices at peak usage, as approved by the engineer. Maintain the parking lot and egress, including snow removal.

Anchor or secure the field offices to prevent them from overturning by high velocity winds. Locate the field office in a dust-reduced and vibration-free environment.

Do not begin construction operations requiring the use of the field offices by the department until the required field offices are furnished, leveled, and secured in the approved locations, fully equipped, and made ready for use as the engineer directs.

C (Vacant)

D Measurement

The department will measure Field Office Fixed as a single lump sum unit of work for the entire field office(s), acceptably completed.

E Payment

The department will pay for measured quantities at the contract unit price under the following bid item:

ITEM NUMBER
SPV.0105.002

DESCRIPTION
Field Office Fixed

UNIT
LS

Payment is full compensation for providing, equipping, securing, and maintaining the facility; and for providing all incidentals and sundries, including but not limited to utilities, fuel, security, toilet facilities, and office supplies as required, either independently or jointly, for the time specified B.1.

Schedule of Items

Attached, dated August 20, 2015, are the revised Schedule of Items Pages 3 and 12 – 23.

Plan Sheets

The following 8½ x 11-inch sheets are attached and made part of the plans for this proposal:

Revised: 2, 50, 55, 61, 66, 421, and 433.

Added: 688A, 688B, 688C, 688D, 688E, and 688F.

END OF ADDENDUM

UTILITY CONTACTS

WISDOT STOC

MR. JEFF MADSON
433 W ST. PAUL AVE, STE 300
MILWAUKEE, WI 53203-3007
414-225-3723
jeffrey.madson@dot.wi.gov

WISDOT ATR PULL BOXES

MR. CLIFF SEROWSKI
935 S. 60TH STREET
WEST ALLIS, WI 53214
414-266-1157
clifford.serowski@dot.wi.gov

AT&T WISCONSIN

MR. ALFER KOLCU
2006 PEWAUKEE RD
WAUKESHA, WI 53188
262-352-3791
ak308x@att.com

AT&T CORP.

MR. CARL DONAHUE
866 ROCK CREEK ROAD
PLANO, IL 60545
847-420-9115; FAX 847-244-9597
cd8729@att.com

CENTURYLINK

MR. KEVIN ZICKERT
224 INDUSTRIAL DRIVE
NORTH FRAIRE, WI 53153
262-392-5200; FAX X 262-392-5233
kevin.zickert@centurylink.com

CITY OF PEWAUKEE DPW

MR. JEFF WEGEL
W240 N3065 PEWAUKEE RD
PEWAUKEE, WI 53072
262-691-0770; FAX 262-691-1798
wegel@pewaukee.wi.us

TIME WARNER CABLE

TW CABLE ENGINEERING
1320 N MARTIN LUTHER KING DR
MILWAUKEE, WI 53212
414-277-4045
w.is.engineering@twcable.com

TOWN OF DELA FIELD

MS. MARY ELSNER
N14 W30782 GOLF RD
DELA FIELD, WI 53018
262-646-2398

WISDOT SIGNALS

MR. DERRIN WOLFORD
141 NW BARSTOW STREET
WAUKESHA, WI 53187-0798
derrin.wolford@dot.wi.gov

MIDWEST FIBER NETWORKS

MR. RICHARD TRGOVEC
3701 W. BURNHAM STREET STE C
MILWAUKEE WI 53215
414-672-5612; FAX 414-226-2269
rtgovec@midwestfiber.netw.orfcs.com

PAETEC BUSINESS SERVICES

MR. JIM KOSTUCH
13935 BISHOPS DR
BROOKFIELD, WI 53005
262-792-7938
james.kostuch@windstream.com

LEVEL 3

MR. BRAHIM GADDOUR
3235 INTERTECH DRIVE, SUITE 600
BROOKFIELD, WI 53045
414-908-1027
reb@level3.com

ATC MANAGEMENT INC

MR. MIKE OLSEN
801 O'KEEFE ROAD
PO BOX 6113
DEPERE, WI 54115-6113
920-338-6582

WISDOT LIGHTING

MR. ERIC PEREA
141 NW BARSTOW STREET
PO BOX 798
WAUKESHA, WI 53187-0798
eric.perea@dot.wi.gov
mbsen@atcllc.com

WE ENERGIES (ELECTRIC & GAS)

MR. LATROY BRUMFIELD
333 W. EVERETT ST - A299
MILWAUKEE, WI 53203
414-221-4578; FAX X 414-221-2336
latroy.brumfield@w-e-energies.com

SUMMIT UTILITY DISTRICT 2

MR. HENRY ELLING
2911 N. DOUSMAN ROAD
OCONOMOWOC, WI 53066
262-567-2757; FAX 262-567-4115
ellingh@summittown.org

TDS METROCOM

MR. MICHAEL JOHNSON
20875 CROSSROADS CIRCLE, SUITE 600
WAUKESHA, WI 53186
262-754-3052; FAX X 262-717-6002
michaeljohnson@tdstelecom.com

WE ENERGIES (ELECTRIC): CONSTRUCTION FIELD CONTACT

BRYAN STOEHR
500 S. 116TH ST.
WEST ALLIS, WI
PHONE: 414-944-5516
MOBILE: 414-416-6059
bryan.stoehr@w-e-energies.com

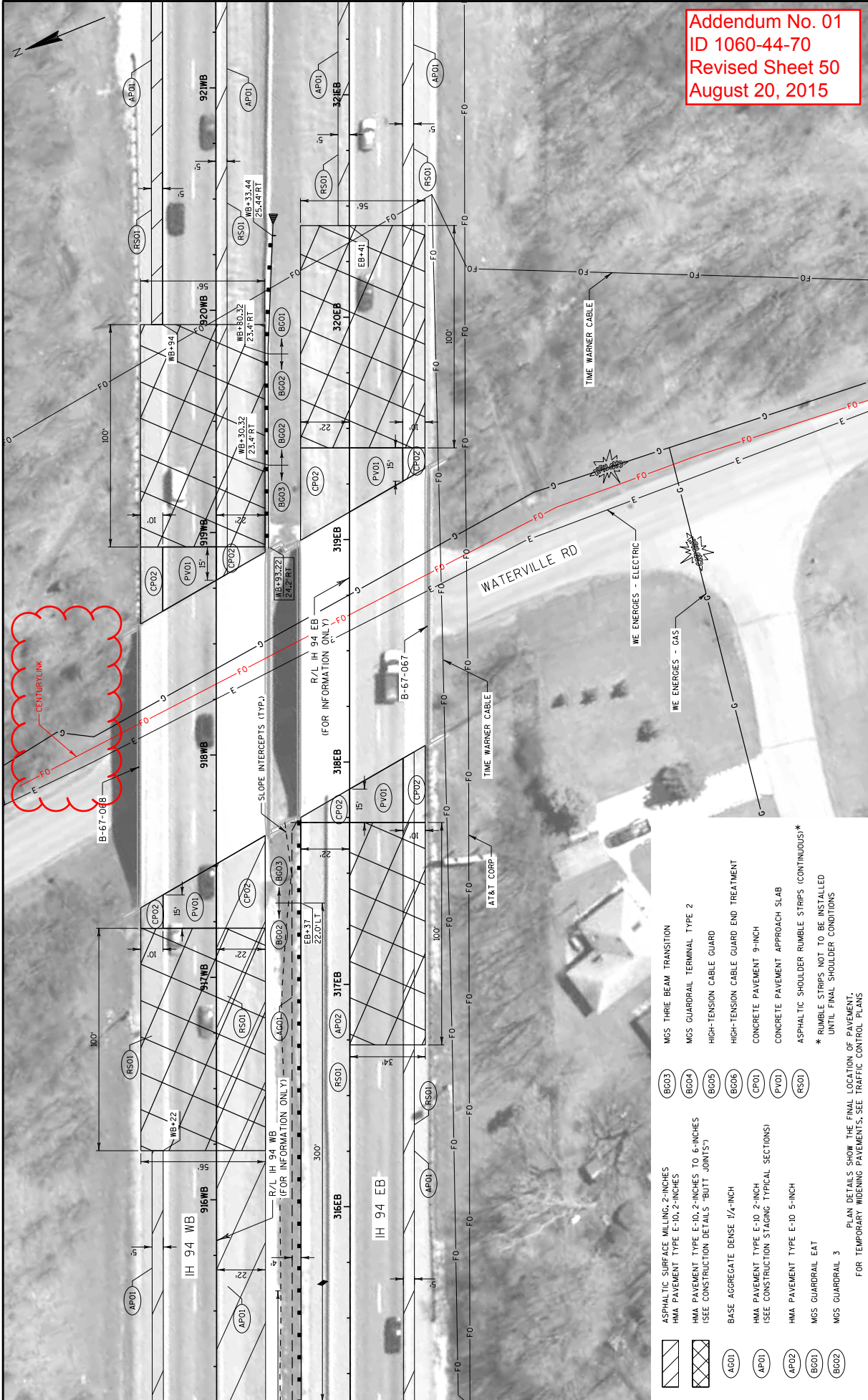
WE ENERGIES (GAS): CONSTRUCTION FIELD CONTACT

TROY NEALEY
500 S. 116TH ST.
WEST ALLIS, WI
PHONE: 414-944-5547
MOBILE: 414-3224661
troy.nealey@w-e-energies.com

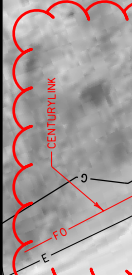


Dial 811 or (800) 242-8511
www.DiggersHotline.com

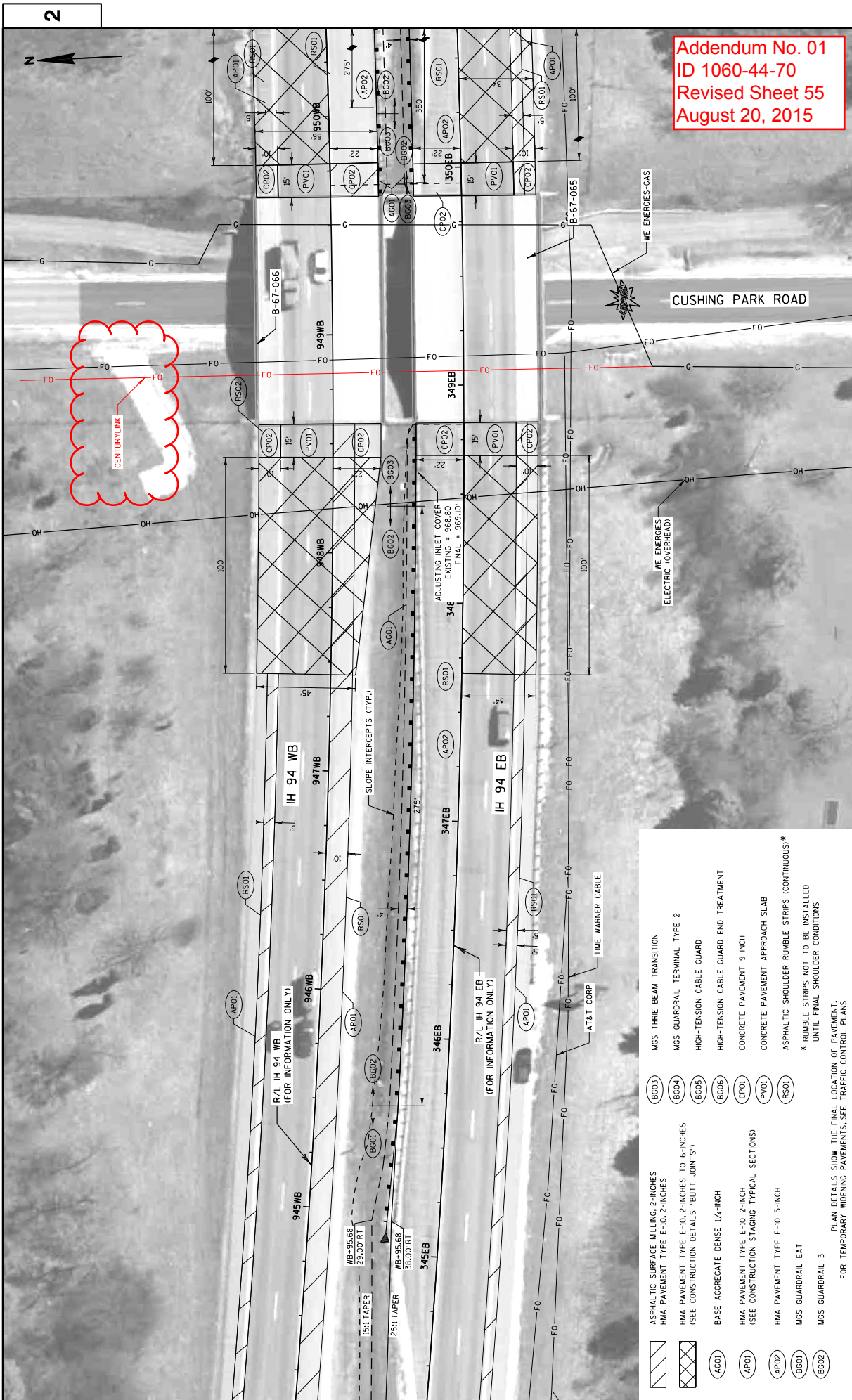
Addendum No. 01
ID 1060-44-70
Revised Sheet 2
August 20, 2015



Addendum No. 01
 ID 1060-44-70
 Revised Sheet 50
 August 20, 2015



- ASPHALTIC SURFACE MILLING, 2-INCHES
 - HMA PAVEMENT TYPE E-10, 2-INCHES
 - HMA PAVEMENT TYPE E-10, 2-INCHES (SEE CONSTRUCTION DETAILS "BUTT JOINTS")
 - BASE AGGREGATE DENSE 1 1/2-INCH
 - HMA PAVEMENT TYPE E-10, 2-INCH (SEE CONSTRUCTION STAGING TYPICAL SECTIONS)
 - HMA PAVEMENT TYPE E-10, 5-INCH
 - MCS GUARDRAIL EAT
 - MCS GUARDRAIL 3
 - MCS THRE BEAM TRANSITION
 - MCS GUARDRAIL TERMINAL TYPE 2
 - HIGH-TENSION CABLE GUARD
 - HIGH-TENSION CABLE GUARD END TREATMENT
 - CONCRETE PAVEMENT 9-INCH
 - CONCRETE PAVEMENT APPROACH SLAB
 - ASPHALTIC SHOULDER RUMBLE STRIPS (CONTINUOUS)**
- * RUMBLE STRIPS NOT TO BE INSTALLED UNTIL FINAL SHOULDER CONDITIONS FOR TEMPORARY TRAVELING PAVEMENTS, SEE TRAFFIC CONTROL PLANS



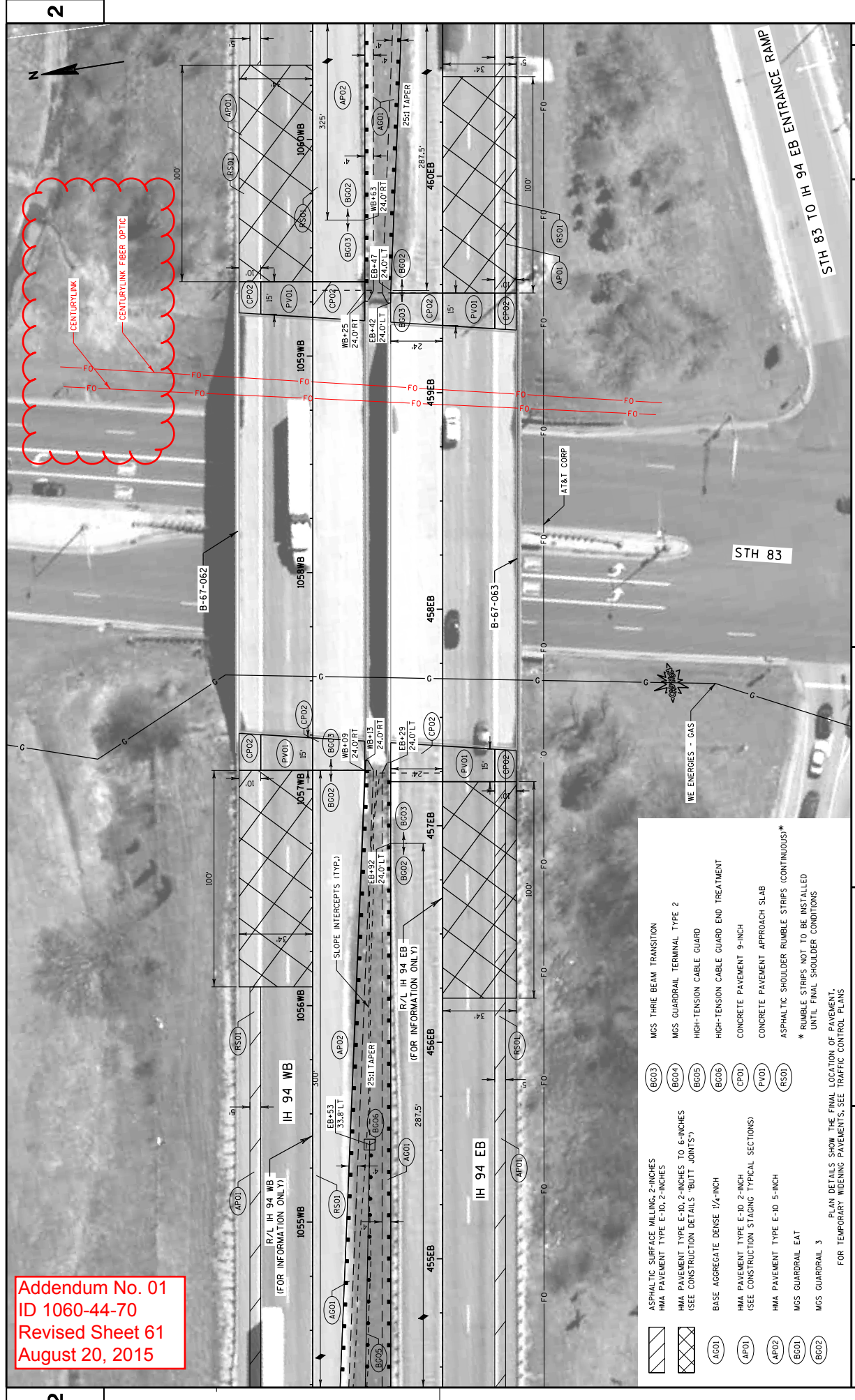
Addendum No. 01
 ID 1060-44-70
 Revised Sheet 55
 August 20, 2015

CENTURYLINK

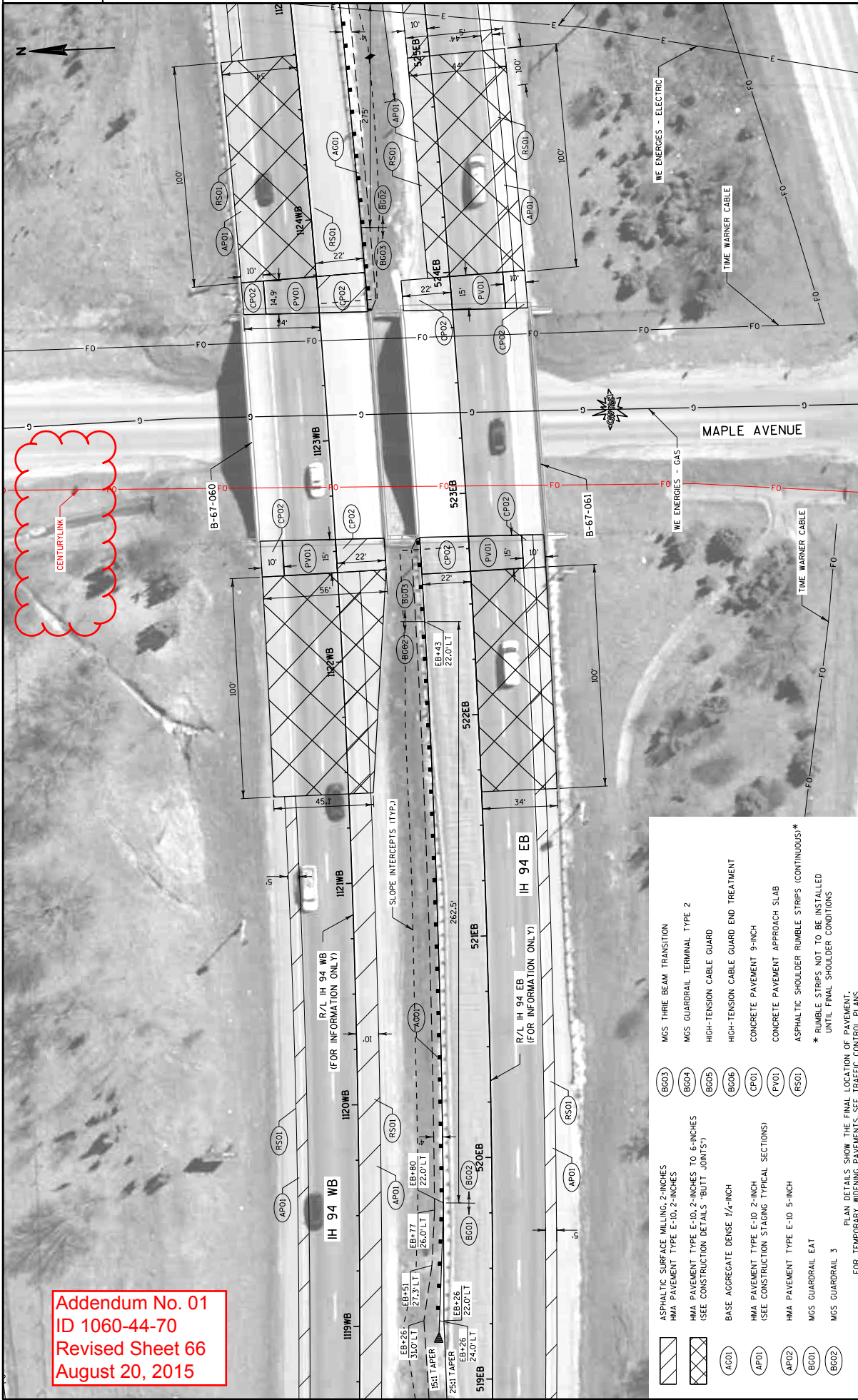
- | | |
|---|---|
| <ul style="list-style-type: none"> ASPHALTIC SURFACE MILLING, 2-INCHES HMA PAVEMENT TYPE E-10, 2-INCHES HMA PAVEMENT TYPE E-10, 2-INCHES TO 6-INCHES (SEE CONSTRUCTION DETAILS "BUTT JOINTS") BASE AGGREGATE DENSE 1/4-INCH HMA PAVEMENT TYPE E-10, 2-INCH (SEE CONSTRUCTION STAGING TYPICAL SECTIONS) HMA PAVEMENT TYPE E-10, 5-INCH MCS GUARDRAIL EAT MCS GUARDRAIL 3 | <ul style="list-style-type: none"> MCS THREE BEAM TRANSITION MCS GUARDRAIL TERMINAL TYPE 2 HIGH-TENSION CABLE GUARD HIGH-TENSION CABLE GUARD END TREATMENT CONCRETE PAVEMENT 9-INCH CONCRETE PAVEMENT APPROACH SLAB ASPHALTIC SHOULDER RUMBLE STRIPS (CONTINUOUS)* <p>* RUMBLE STRIPS NOT TO BE INSTALLED UNTIL FINAL SHOULDER CONDITIONS</p> |
|---|---|



ADDENDUM NO. 01
ID 1060-44-70
Revised Sheet 61
August 20, 2015



- ASPHALTIC SURFACE MILLING, 2-INCHES
- HMA PAVEMENT TYPE E-10, 2-INCHES
- HMA PAVEMENT TYPE E-10, 2-INCHES (SEE CONSTRUCTION DETAILS "BUTT JOINTS")
- BASE AGGREGATE DENSE 1 1/2-INCH
- HMA PAVEMENT TYPE E-10, 2-INCH (SEE CONSTRUCTION STAGING TYPICAL SECTIONS)
- HMA PAVEMENT TYPE E-10, 5-INCH
- MCS GUARDRAIL EAT
- MCS GUARDRAIL 3
- MCS THRE BEAM TRANSITION
- MCS GUARDRAIL TERMINAL TYPE 2
- HIGH-TENSION CABLE GUARD
- HIGH-TENSION CABLE GUARD END TREATMENT
- CONCRETE PAVEMENT APPROACH SLAB
- ASPHALTIC SHOULDER RUMBLE STRIPS (CONTINUOUS)*
- * RUMBLE STRIPS NOT TO BE INSTALLED UNTIL FINAL SHOULDER CONDITIONS FOR TEMPORARY WIDENING PAVEMENTS, SEE TRAFFIC CONTROL PLANS



Addendum No. 01
 ID 1060-44-70
 Revised Sheet 66
 August 20, 2015

- ASPHALTIC SURFACE MILLING, 2-INCHES
 - HMA PAVEMENT TYPE E-10, 2-INCHES
 - HMA PAVEMENT TYPE E-10, 2-INCHES TO 6-INCHES (SEE CONSTRUCTION DETAILS "BUTT JOINTS")
 - BASE AGGREGATE DENSE 1/4-INCH
 - HMA PAVEMENT TYPE E-10, 2-INCH (SEE CONSTRUCTION STAGING TYPICAL SECTIONS)
 - HMA PAVEMENT TYPE E-10 5-INCH
 - MGS GUARDRAIL EAT
 - MGS GUARDRAIL 3
 - MGS THRE BEAM TRANSITION
 - MGS GUARDRAIL TERMINAL TYPE 2
 - HIGH-TENSION CABLE GUARD
 - HIGH-TENSION CABLE GUARD END TREATMENT
 - CONCRETE PAVEMENT 9-INCH
 - CONCRETE PAVEMENT APPROACH SLAB
 - ASPHALTIC SHOULDER RUMBLE STRIPS (CONTINUOUS)*
- * RUMBLE STRIPS NOT TO BE INSTALLED UNTIL FINAL SHOULDER CONDITIONS FOR TEMPORARY WIDENING PAVEMENTS, SEE TRAFFIC CONTROL PLANS

Category	Division	From/To Station	Location	Common Excavation (1) (Item No. 205.0100) Cut (±)	EBS Excavation (8) Item No. SPV.0035.0001 EBS Excavation (3)	Salvaged/Unusable Pavement Material (4)	Unexpanded Fill	Expanded Fill (5)		Mass Ordinate +/- (6)	Waste	Borrow	Comment:					
								Factor										
1000	1	914WB+32 to 917WB+63 929WB+92 to 963WB+25 1048WB+75 to 1068WB+00 1123WB+57 to 1131WB+75	WB Waterville WB Cushing Park WB STH 83 WB Maple	96.3	35.0	35.0	0.0	0.0	1.25	96.3	131.3	0.0	(Item No. 208.0100) 0.0 0.0 0.0 0.0	STAGE 1A WIDENING				
				2720.7	916.0	916.0	327.1	408.9	2311.9	0.0								
				2073.0	549.0	549.0	0.0	0.0	2073.0	0.0								
				1479.3	441.0	441.0	6.1	7.6	1473.3	0.0								
				6389.2	1941.0	1941.0	333.1	416.4	5954.4	0.0								
				Division 1 Subtotal														
				2161.7	516.0	516.0	0.0	0.0	2161.7	0.0								
				469.1	385.0	385.0	36.5	48.2	430.6	0.0								
				2524.6	1008.0	1008.0	70.4	88.1	2454.2	0.0								
				1829.4	715.0	715.0	293.8	367.3	1535.5	0.0								
1893.6	619.0	619.0	66.4	83.0	1827.2	0.0												
8878.5	3243.0	3243.0	469.3	586.6	8409.2	0.0												
Division 2 Subtotal																		
3		273EB+57 to 294EB+75 307EB+70 to 317EB+65 329EB+23 to 364EB+00 449EB+00 to 466EB+70 507EB+50 to 532EB+17	IH 94 Nemadbin Median IH 94 Waterville Median IH 94 Cushing Park Median IH 94 STH 83 Median IH 94 Maple Median	2063.0	0.0	0.0	2161.8	2702.2	-88.8	0.0	639	(7)						
				871.5	0.0	0.0	566.3	707.9	305.2	0.0								
				4573.4	0.0	0.0	2981.7	3727.1	1592.2	0.0								
				1763.9	0.0	0.0	823.8	1029.8	940.0	0.0								
				2731.1	0.0	0.0	1555.4	1944.2	1175.7	0.0								
Division 3 Subtotal																		
4		242EBM+50 to 248EBM+50	CTH F Ditch	27.3	0.0	0.0	2.1	2.7	25.2	24.6	0.0	STAGE 4A DITCH REGRADING						
				27.3	0.0	0.0	2.1	2.7	25.2	0.0								
Division 4 Subtotal																		
Category 1000 Totals				27257.2	5184.0	5184.0	8891.0	11114.0	18278.0	21960.0	639.0							

Addendum No. 01
ID 1060-44-70
Revised Sheet 421
August 20, 2015

PLOT SCALE: 1:1

- Common Excavation is the Cut column. Item number 205.0100
- Salvaged/Unusable Pavement Material is equal to the amount of material determined to be removed for EBS.
- EBS Excavation to be backfilled with Breaker Run (Item No. 310.0100) and Select Crushed Material (Item No. 312.0110).
- EBS quantity calculated under assumption 20% of project area will require EBS. Final locations for EBS to be determined by Engineer.
- Expanded Fill. Factor = 1.25
- The Mass Ordinate + or - Qty calculated for the Division. Plus quantity indicates an excess of material within the Division. Minus indicates a shortage of material within the Division.
- Fill material available from Division 1, 2, or 3. Borrow (Item No. 208.0100) quantity is not required.
- EBS Excavation is the EBS Excavation column. Item number SPV.0035.0001

MOBILIZATION

619:1000 MOBILIZATION	
CATEGORY	PROJECT
1000	1060-44-70
	1
<hr/>	
	PROJECT 1060-44-70 TOTAL
	1

EROSION CONTROL MOBILIZATION

628:1905 MOBILIZATIONS		628:1910 MOBILIZATIONS	
EROSION CONTROL		EROSION CONTROL	
CATEGORY	PROJECT	CATEGORY	PROJECT
1000	1060-44-70	1000	1060-44-70
	4		1
	3		1
	3		1
	3		1
	1		1
	1		1
	1		1
	1		1
<hr/>		<hr/>	
	PROJECT 1060-44-70 TOTAL		7
	16		7

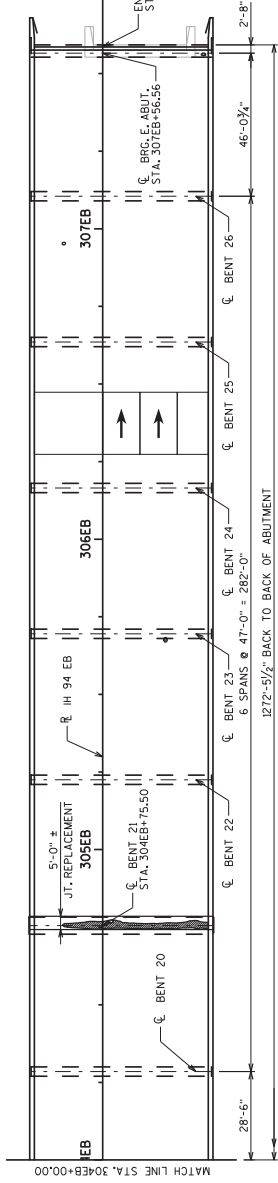
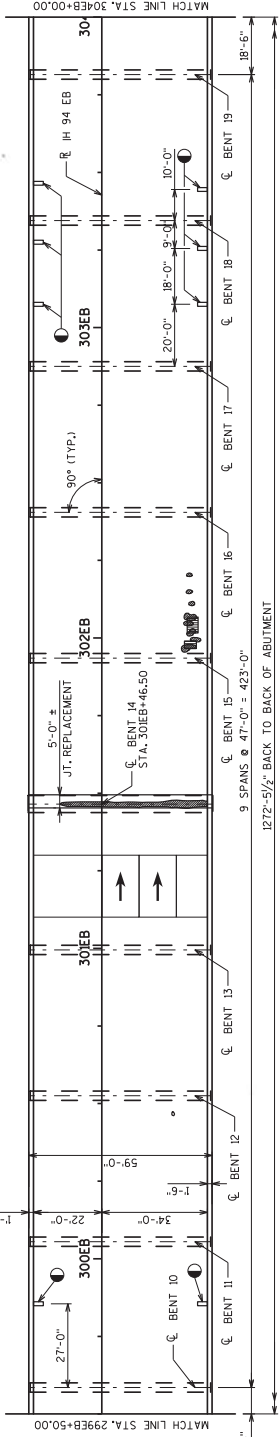
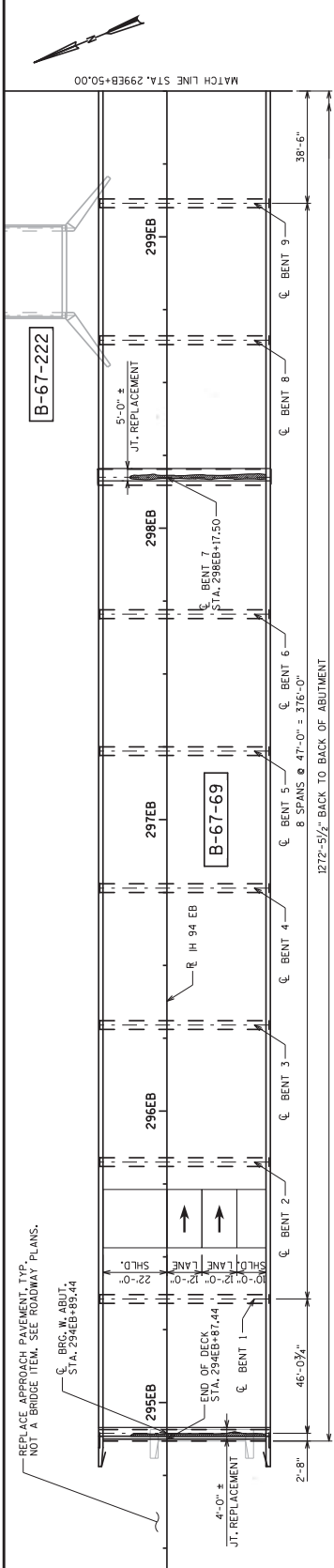
FIELD OFFICE FIXED

SRV.0105.0002 FIELD OFFICE FIXED	
CATEGORY	ROADWAY
1000	PROJECT 1060-44-70
	1.0
<hr/>	
	PROJECT 1060-44-70 TOTAL
	1.0

Addendum No. 01
ID 1060-44-70
Revised Sheet 433
August 20, 2015

STATE PROJECT NUMBER
1060-44-70

Addendum No. 01
ID 1060-44-70
Added Sheet 688A
August 20, 2015



- LIST OF DRAWINGS**
- GENERAL PLAN
 - TYPICAL SECTION GENERAL NOTES AND QUANTITIES
 - EXPANSION JOINT (1 OF 2)
 - EXPANSION JOINT (2 OF 2)
 - EXPANSION JOINT DETAILS
 - EXPANSION JOINT DETAILS



STRUCTURES DESIGN CONTACTS
BRIDGE OFFICE: (608) 266-8489
WILLIAM DREHER
HEATHER ANDERS (414) 359-2300

NO.	DATE	REVISION	BY

ORIGINAL PLANS PREPARED BY
HNTB
1144 W. BARK PLACE
MILWAUKEE, WI 53224
(414) 359-2300

STATE OF WISCONSIN
DEPARTMENT OF TRANSPORTATION
ACCEPTED: *William J. Decker* 06/18/15
CHIEF STRUCTURES DESIGN ENGINEER DATE

STRUCTURE B-67-69
IH 94 EB OVER NEMAHNIN LAKE CHANNEL (BARK RIVER)
COUNTY: WAUKESHA TOWN: GRAYVILLE SUMMIT
DESIGN SPEC.: WAUKESHA
REHABILITATION: N/A
BY: EAJ/ESL
CHECKED: EAJ/ESL
DESIGNED: EAJ/ESL
DATE: 06/18/15

GENERAL PLAN
SHEET 1 OF 6
688A



DECK INSPECTION RESULTS
(INFRARED INSPECTION DATE: 6/13/14)
FOR INFORMATION ONLY

FIELD OBSERVATIONS SUMMARY		S.N. B-67-69	
ITEM	UNIT	QUANT.	%
DELAMINATION	F ²	71182	
SPALL	F ²	303	0.4
DEBOND	F ²	<0.1	
ASPHALT PATCH	F ²	N/A	
CONCRETE PATCH	F ²	0	
SHADE/DEBRIS	F ²	27	<0.1

HYDRAULIC DATA

100 YEAR FREQUENCY (FROM HSI SYSTEM 10/22/13)
O100 = NOT AVAILABLE
HW100 = NOT AVAILABLE
WATERWAY AREA = NOT AVAILABLE
SCOUR CRITICAL COEF = AVAILABLE
ROAD OVERTOPPING = NOT AVAILABLE

TRAFFIC DATA

IH 94 EB & WB
A.D.T. = 60,500 (2026)
R.D.S. = 70 MP.H.
ULTIMATE STRESSES FOR MATERIALS
CONCRETE MASONRY: f_c = 4,000 psi
SUPERSTRUCTURE: f_c = 3,500 psi
ALL OTHER: f_c = 3,500 psi
BAR STEEL REINFORCEMENT: f_y = 60,000 psi

DESIGN DATA

LIVE LOAD
DESIGN ALLOWING HS20
OPERATING RATING HS27
WISCONSIN STANDARD PERMIT VEHICLE (WS-SPV) = 180 KIPS
ULTIMATE STRESSES FOR MATERIALS
CONCRETE MASONRY: f_c = 4,000 psi
SUPERSTRUCTURE: f_c = 3,500 psi
ALL OTHER: f_c = 3,500 psi
BAR STEEL REINFORCEMENT: f_y = 60,000 psi

PLOT SCALE: 1:40:1

PLOT NAME: #FILE#

PLOT DATE: 4/25/2015 7:21:17 AM

PLOT BY: eaj@linck

FILE NAME: I:\S9899\31\B-67-69\cos\080101_00_00

GENERAL NOTES

DRAWINGS SHALL NOT BE SCALED.
DIMENSIONS SHOWN ARE BASED ON THE EXISTING STRUCTURE PLANS.
ALL DIMENSIONS ARE IN FEET AND INCHES UNLESS OTHERWISE NOTED. ALL STATIONS AND ELEVATIONS ARE IN FEET.
LOCATIONS OF THE FOLLOWING BID ITEMS SHALL BE DETERMINED IN THE FIELD BY THE PROJECT ENGINEER:
- PREPARATION DECKS
- CONCRETE SURFACE REPAIR
- FULL DEPTH DECK REPAIR

QUANTITIES SHOWN FOR THE ABOVE BID ITEMS ARE APPROXIMATE.
UNDER THE BID ITEM "MASONRY ANCHORS TYPE 1 NO. 5 BARS" ANCHORED REINFORCING STEEL SHALL BE PAID FOR SEPARATELY AS PROVIDED IN SECTION 505 OF THE STANDARD SPECIFICATIONS FOR BAR STEEL REINFORCEMENT.
BAR STEEL REINFORCEMENT SHALL BE EMBEDDED 2' CLEAR UNLESS OTHERWISE SHOWN OR NOTED.

ALL REINFORCING BARS ARE ENGLISH. THE FIRST OR FIRST TWO DIGITS OF THE BAR MARK SIGNIFIES THE BAR SIZE. BAR DIMENSIONS ARE OUT TO OUT OF BAR.
UTILIZE EXISTING BAR STEEL REINFORCEMENT WHERE SHOWN AND EXTEND 24 BAR DIAMETERS INTO NEW WORK UNLESS SPECIFIED OTHERWISE.
EXPANSION JOINT ASSEMBLY, INCLUDING ANCHOR STUDS AND HARDWARE, SHALL BE PAID FOR IN THE LUMP-SUM PRICE BID AS "EXPANSION DEVICE B-67-69".

"PROTECTIVE SURFACE TREATMENT" SHALL BE APPLIED TO THE FOLLOWING COMPLETED SURFACES:
- TOP OF DECK SLAB/OVERLAY
- TOP AND INSIDE FACES OF REPLACEMENT PARAPET SECTIONS
PROTECTIVE SURFACE TREATMENT PAID FOR UNDER "PROTECTIVE SURFACE TREATMENT RESEAL" SHALL BE APPLIED TO THE FOLLOWING SURFACES:
- TOP AND INSIDE FACES OF EXISTING PARAPETS

INSTALL AT PAVING NOTCH A NEW 1/2" PREFORMED JOINT FILLER WHICH SHALL BE CONSIDERED INCIDENTAL TO "CONCRETE MASONRY OVERLAY DECKS". HOT POURED JOINT SEALANT AT FILLER INCIDENTAL TO "CONCRETE MASONRY OVERLAY DECKS".
JOINT FILLER SHALL CONFORM TO THE REQUIREMENTS OF AASHTO M83 TYPE 1, 2, OR 3, OR AASHTO M233.

SEAL ALL EXPOSED HORIZONTAL AND VERTICAL SURFACES OF 1/2" JOINT FILLER WITH HOT POURED JOINT SEALANT 1/2" DEEP AND HOLD 1/4" BELOW SURFACE OF CONCRETE.
ANY EXCAVATION REQUIRED TO COMPLETE THE PAVING BLOCK AT THE ABUTMENTS IS TO BE CONSIDERED INCIDENTAL TO THE BID ITEM "CONCRETE MASONRY OVERLAY DECKS".
NEW CONCRETE AT JOINT REPAIR IS PAID FOR AS "CONCRETE MASONRY OVERLAY DECKS".

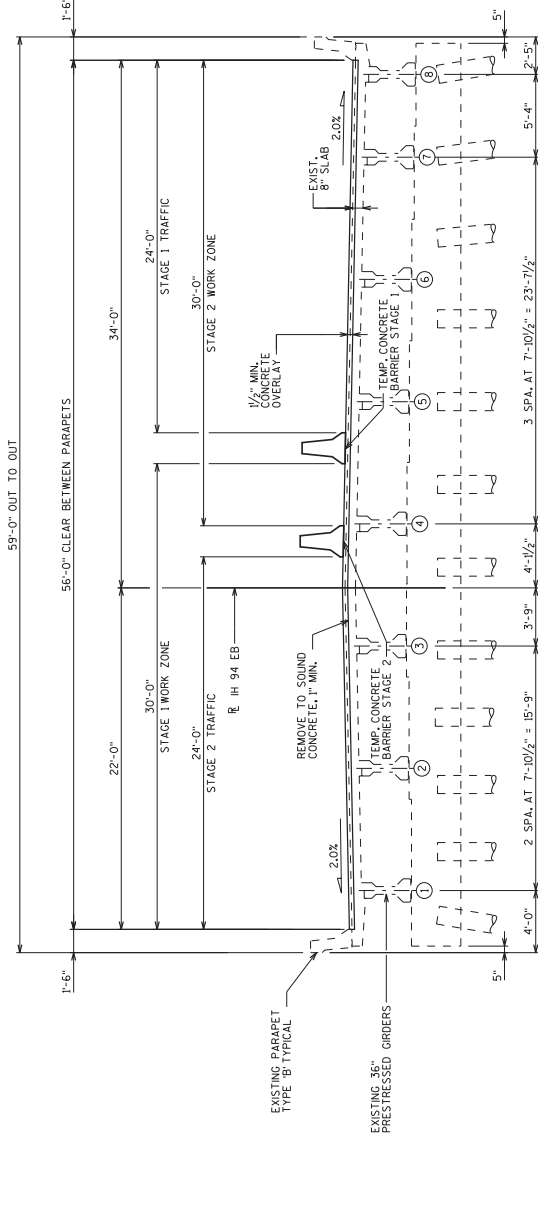
ALL CONCRETE REMOVAL NOT COVERED WITH A CONCRETE OVERLAY SHALL BE DEFINED BY A 1-INCH DEEP SAW CUT.
BEVEL EDGES OF EXPOSED CONCRETE TO MATCH EXISTING BEVELS UNLESS NOTED OTHERWISE.
A MINIMUM OF 1-INCH OF CONCRETE SHALL BE REMOVED FROM THE ENTIRE BRIDGE DECK UNDER THE BID ITEM "CLEANING DECKS".

PROFILE GRADE LINE SHALL BE DETERMINED IN THE FIELD BASED UPON A MINIMUM OVERLAY THICKNESS OF 1/2" PLACED ABOVE THE DECK SURFACE AFTER THE "CLEANING DECKS".
CONTRACTOR SHALL CONTACT THE STRUCTURES DESIGN SECTION FOR ANY ADDITIONAL TAPERING LIMITS AT DRAINS TO ACCOUNT FOR ADDITIONAL OVERLAY THICKNESS.

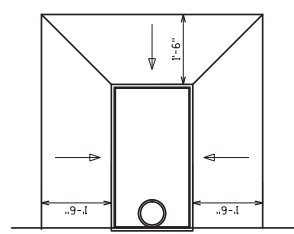
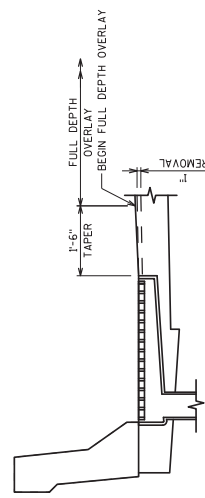
VIEWER DRAIN DOWNSPOUTS ARE NOT CLOSED ORCE CONSTRUCTION COMPLETED. CLOSED DOWNSPOUTS TO BE CLEANED OUT AND CONSIDERED INCIDENTAL TO "CLEAN DECK INLETS".
MAINTAIN EXISTING DRAINS. IF OVERLAY EXCEEDS 1/2" CONTACT ENGINEER ABOUT ADJUSTING TAPERING LIMITS AT DRAINS TO ACCOUNT FOR ADDITIONAL OVERLAY THICKNESS.
DEBRIS CONTAINMENT FOR JOINT REMOVAL AND REPLACEMENT OPERATIONS AND OTHER OPERATIONS SHALL BE PROVIDED BY THE CONTRACTOR USING AN EXISTING OLD STRUCTURE OVER WATERWAY WITH DEBRIS CAPTURE SYSTEM STA. 30+00.

REMOVAL OF THE PARAPET AT THE JOINTS IS INCLUDED IN BID ITEM "JOINT REPAIR".
NEW CONCRETE TO REPLACE PARAPET IS PAID FOR UNDER BID ITEM "CONCRETE MASONRY OVERLAY DECKS".

Addendum No. 01
ID 1060-44-70
Added Sheet 688B
August 20, 2015



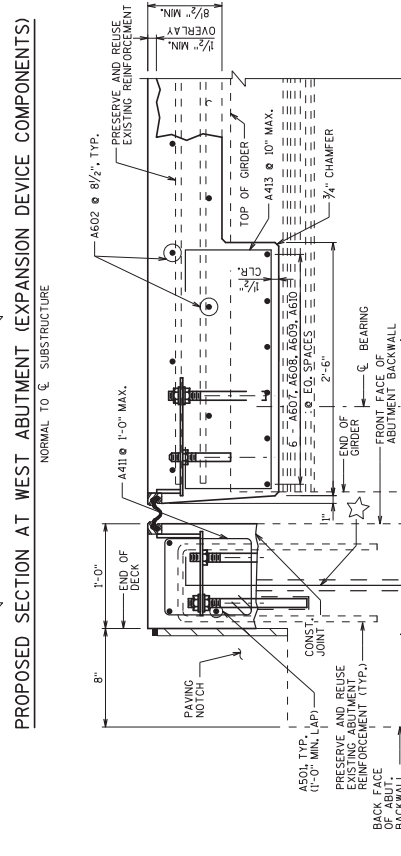
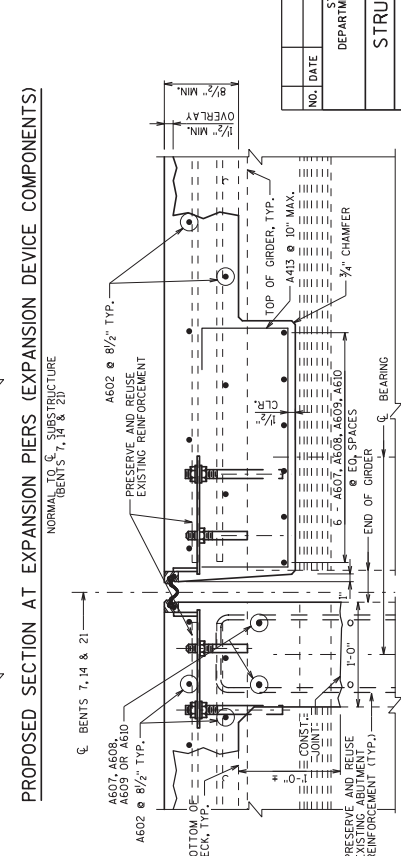
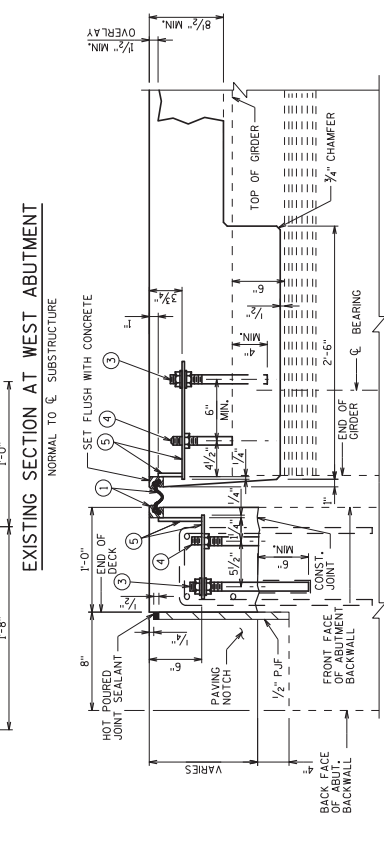
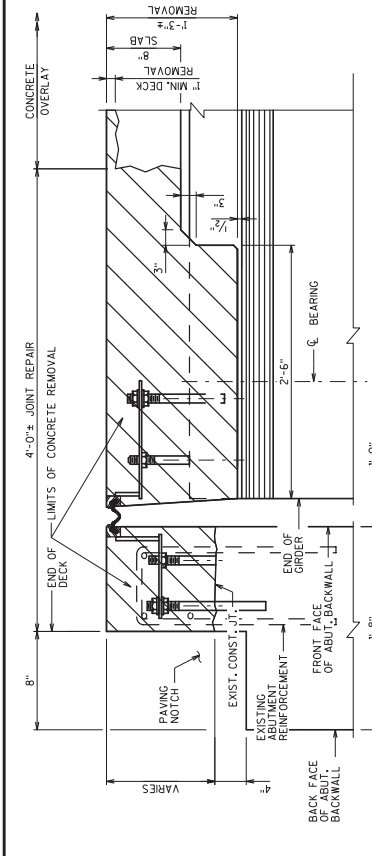
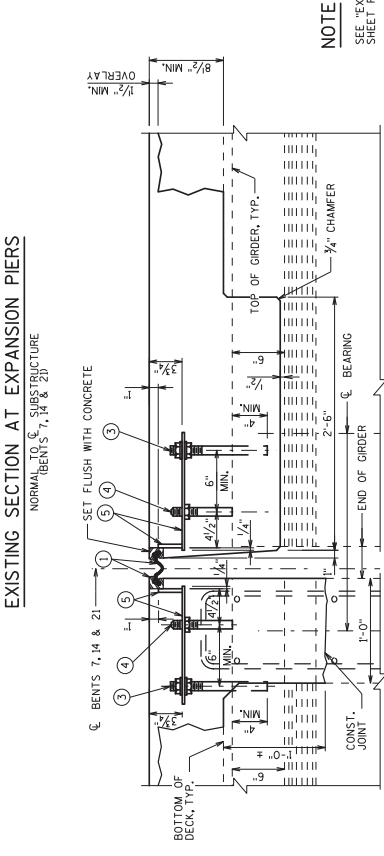
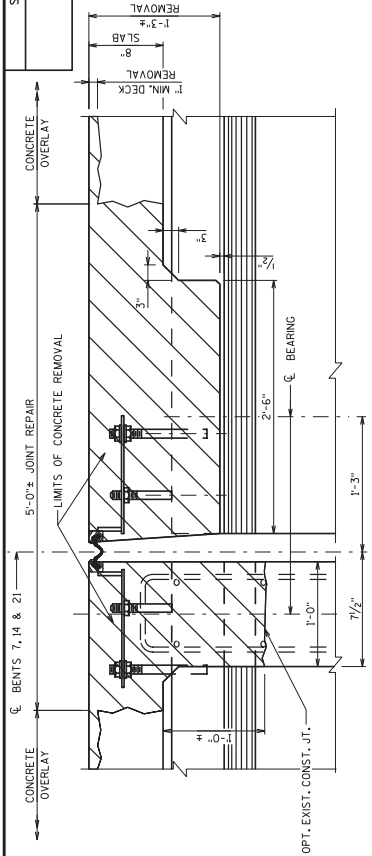
TYPICAL SECTION
(LOOKING EAST)



DRAIN TAPERING DETAILS

TOTAL ESTIMATED QUANTITIES

ITEM NO.	BID ITEM	UNIT	TOTAL
203.0700.S	REMOVING OLD STRUCTURE OVER WATERWAY WITH DEBRIS CAPTURE SYSTEM STA. 30+00	LS	1
502.3200.0003	EXPANSION DEVICE B-67-69	LS	1
502.3200	PROTECTIVE SURFACE TREATMENT	SY	7,924
502.3215.S	PROTECTIVE SURFACE TREATMENT RESEAL	SY	1,011
502.5005	MASONRY ANCHORS TYPE 1 NO. 5 BARS	EACH	57
505.0605	BAR STEEL REINFORCEMENT HS COATED BRIDGES	LB	7,560
505.0604	BAR COUPLERS NO. 4	EACH	14
505.0306	SUPPLERS NO. 8	SY	73
509.0302	PREPARATION DECKS TYPE 1	SY	3
509.0500	CLEANING DECKS	SY	7,791
509.1000	CONCRETE SURFACE REPAIR	SY	125
509.1500	FULL-DEPTH DECK REPAIR	SF	80
509.2000	CONCRETE MASONRY OVERLAY DECKS	SY	1
509.2500	CLEAN DECK INLETS	CY	486
SPV.0060.4001	CLEAN DECK INLETS	EACH	8
	NON-BID ITEMS	SIZE	1/2"
	PREFORMED JOINT FILLER		
	ALL ITEMS ARE CATEGORY 2090		



Addendum No. 01
ID 1060-44-70
Added Sheet 688C
August 20, 2015

NOTE
SEE EXPANSION JOINT (2 OF 2)
SHEET FOR ADDITIONAL INFORMATION

NO.	DATE	REVISION	BY
STATE OF WISCONSIN DEPARTMENT OF TRANSPORTATION			
STRUCTURE B-67-69			
DRAWN		EJA	PKS
CHECKED		KTM	
EXPANSION JOINT (1 OF 2)			SHEET 3 OF 6
			688C

PLOT SCALE : 0.333333:1

PLOT NAME : #FILE#

PLOT BY : eajl@trk

PLOT DATE : 4/25/2015 7:21:22 AM

FILE NAME : I:\S9899\31\B-67-69\cds\080103_expj1.dgn

EXPANSION JOINT NOTES

ONE FIELD SPICE PERMITTED IN STEEL EXTRUSIONS, UNLESS MORE ARE REQUIRED FOR STAGED CONSTRUCTION, HANDLING OR GALVANIZING REQUIREMENTS. IF USED, DETAILS SHALL BE SUBMITTED FOR APPROVAL. NO SPLICING PERMITTED IN NEOPRENE STRIP SEAL. AFTER FABRICATION, BUT BEFORE SHIPMENT, STRAIGHTEN STEEL EXTRUSIONS SUCH THAT THEY SHALL BE FREE FROM WARP, TWIST AND SHEER.

FABRICATOR SHALL PROVIDE MEANS OF KEEPING GALVANIZED SURFACES FREE FROM CORROSION THROUGHOUT TO APPLICATION OF NEOPRENE ADHESIVE FOR NEOPRENE GLAND INSTALLATION. SANDBLAST PLATES, SUPPORTS AND EXTRUSIONS AFTER FABRICATION IN ACCORDANCE WITH SSPC-AB 13. NEOPRENE STRIP SHALL BE GALVANIZED AFTER BLAST CLEANING. THE PLATES, SUPPORTS AND EXTRUSIONS SHALL BE HOT DIPPED GALVANIZED.

ANCHOR SYSTEM NO. 8 AND NO. 9 SHALL CONFORM TO ASTM A307 AND SHALL BE GALVANIZED IN ACCORDANCE WITH ASTM A153 CLASS C AND D.

STRIP SEAL EXPANSION JOINT ASSEMBLY, INCLUDING ANCHOR STUDS AND HARDWARE WILL BE PAID FOR AT THE LUMP SUM PRICE BID FOR EXPANSION DEVICE B-67-69.

LEGEND

- ① NEOPRENE STRIP SEAL (4 - INCH & STEEL EXTRUSIONS.
- ② STUDS 3/8" DIA. x 6 1/2" LONG AT 6" ALTERNATE CENTERS. WELD TO EXTRUSIONS AND BEND AS SHOWN AFTER WELDING.
- ②A 1/2" THICK ANCHOR PLATE WITH 3/8" DIA. ROD OR ALTERNATE STRIP SEAL ANCHOR. WELD ROD TO ANCHOR PLATE. WELD ANCHOR PLATE TO NO. 1 AT 1'-6" CENTERS BETWEEN GIRDERS.
- ③ 3/4" DIA. THREADED ROD WITH 2 NUTS AND PLATE WASHERS, FOR ANCHORING TO GROUND. THE ROD AND NUTS SHALL BE HOT DIPPED THREADED ROD INTO FIELD DRILLED HOLES IN ABUTMENT BACKWALL AS SHOWN.
- ④ 3/4" DIA. THREADED ROD WITH NUT. TACK WELD NUT TO NO. 5.
- ⑤ FABRICATE SUPPORT FROM 3" x 3/2" BAR AS SHOWN OR EQUIVALENT. ANTI-SIZE LUBRICANT. PLACE IN COUNTERSUNK HOLE. FIELD WELDED COVER WELDED AREAS WITH EPOXY COATING MATERIAL. PROVIDE 1/2" DIA. HOLE FOR NO. 3 AND 1" DIA. HOLE FOR NO. 4.
- ⑥ GALVANIZED PLATE 3/8" x 10 1/2" x 2'-2" LONG WITH HOLES FOR NO. 7.
- ⑦ 3/4" DIA. x 1 1/2" STAINLESS STEEL SOCKET FLAT HEAD SCREWS WITH ANTI-SIZE LUBRICANT. PLACE IN COUNTERSUNK HOLE. RECESS 3/8" BELOW PLATE SURFACE.
- ⑧ 3/4" DIA. x 4" GALVANIZED HEX HEAD BOLT. BEND 45°.
- ⑨ 3/4" DIA. x 2 1/2" GALVANIZED THREADED COUPLING.
- ⑩ 1" x 5" SLOTTED COUNTERSUNK HOLE FOR NO. 7. PLACE SLOT PARALLEL TO DIRECTION OF MOVEMENT.

▲ SET JOINT OPENING AT - SEE TEMP. TABLE

☆ MASONRY ANCHORS TYPE L NO. 5 BARS. EMBED A MINIMUM OF 6" INTO CONCRETE. SET IN 1" DIA. HOLES AND WELD TO ANCHOR JOINT HARDWARE. TURN TO LEG AS NECESSARY TO FIT. ANCHORS SHALL BE APPROVED FOR USE IN CRACKED CONCRETE.

EXISTING BARS ARE LIKELY TO BE CORRODED AND/OR DAMAGED DURING CONCRETE REMOVAL. PRESERVE AND INCORPORATE AS MUCH REBAR AS PRACTICAL. SUPPLEMENT WITH THE BARS INDICATED BY ☆

Addendum No. 01
ID 1060-44-70
Added Sheet 688D
August 20, 2015

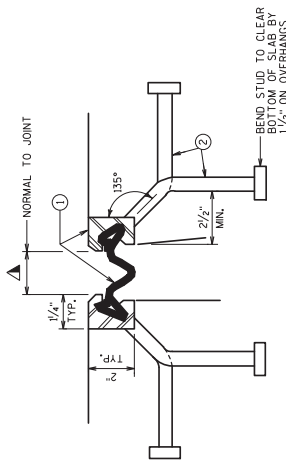
NO.	DATE	REVISION	BY
STATE OF WISCONSIN DEPARTMENT OF TRANSPORTATION			
STRUCTURE B-67-69			
DRAWN: EAJ		CHECKS: HDA	
EXPANSION JOINT (2 OF 2)			SHEET 4 OF 6
688D			

TEMPERATURE TABLE

TEMP.	BENTS 7, 14	BENT 21
85°	1 1/2"	1 1/2"
75°	1 1/2"	1 1/2"
65°	1 1/2"	1 1/2"
55°	2"	2"
45°	2 1/4"	2 1/4"
35°	2 1/2"	2 1/2"
25°	2 3/4"	2 3/4"
15°	3"	2 1/2"
5°	3 1/4"	3 1/4"

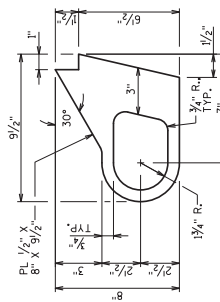
SET JOINT OPENING AT WEST ABUTMENT AT 1 1/4".

A SMALL JOINT OPENING DUE TO A HIGH TEMPERATURE AT TIME OF CONSTRUCTION MAY REQUIRE NEOPRENE STRIP SEAL INSTALLATION INTO STEEL EXTRUSIONS PRIOR TO SETTING THE EXPANSION JOINT.

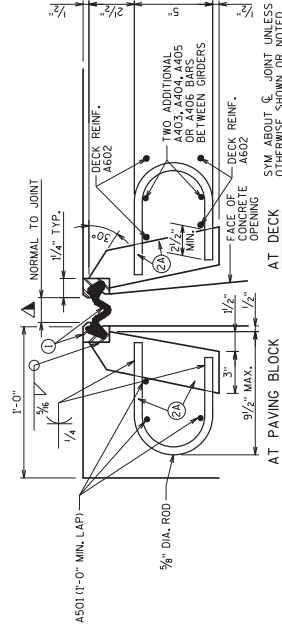


SECTION THRU JOINT

EXTERIOR GIRDER TO EDGE OF DECK AND AT PARAPETS

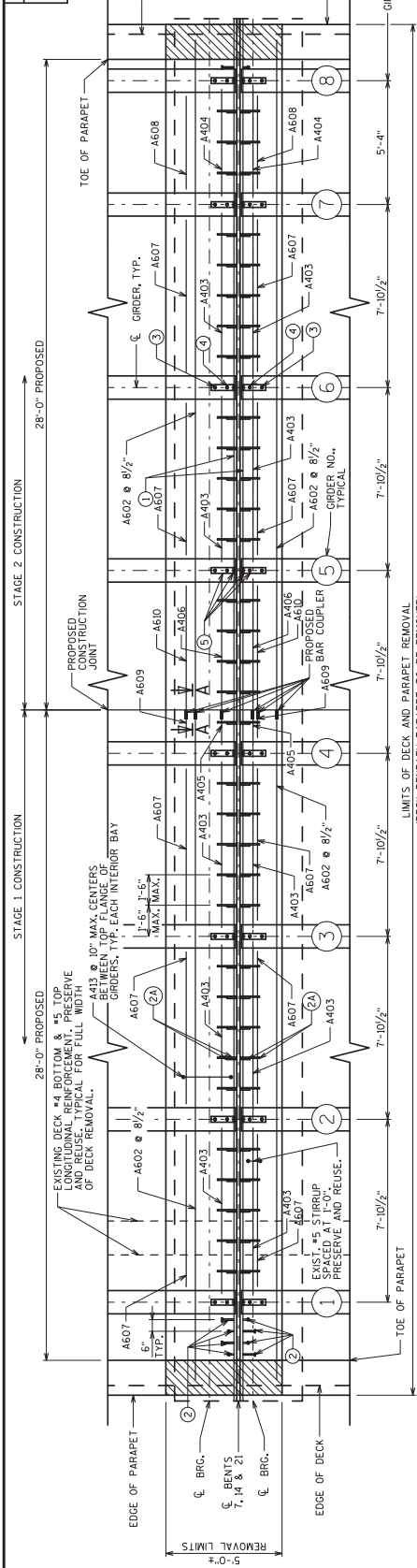


ALTERNATE STRIP SEAL ANCHOR

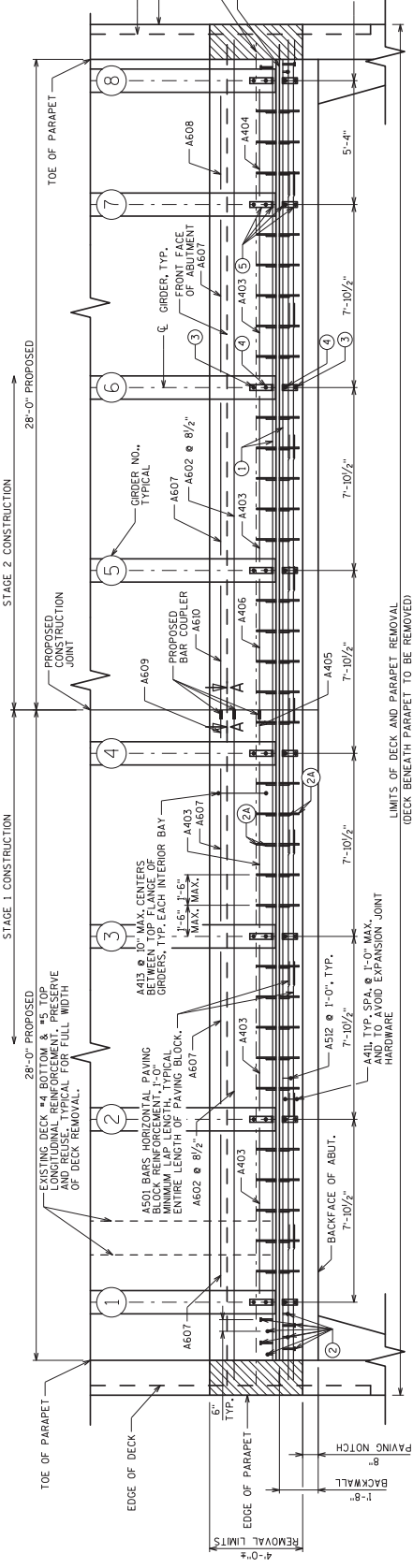


SECTION THRU JOINT

ROADWAY TRAFFIC AREA BETWEEN EXTERIOR GIRDERS



PLAN B-67-69 EXPANSION JOINT REPLACEMENT BENTS 7, 14 & 21
(SEE EXPANSION JOINT DETAILS SHEET FOR BILL OF BARS)

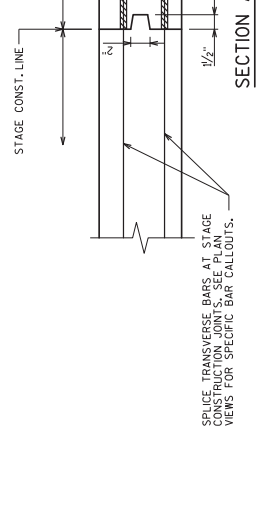


PLAN B-67-69 WEST ABUTMENT EXPANSION JOINT REPLACEMENT
(SEE EXPANSION JOINT DETAILS SHEET FOR BILL OF BARS)

NO.	DATE	REVISION	BY
STATE OF WISCONSIN DEPARTMENT OF TRANSPORTATION			
STRUCTURE B-67-69			
EXPANSION JOINT			
REINFORCEMENT			
SHEET 5 OF 6			688E

Addendum No. 01
ID 1060-44-70
Added Sheet 688E
August 20, 2015

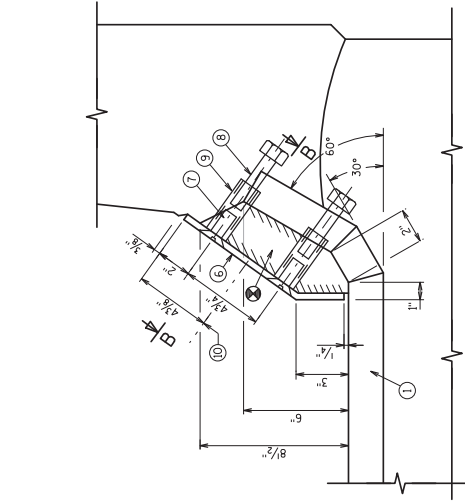
NOTES
 BID ITEM - JOINT REPAIR SHALL BE MEASURED FROM OUT-TO-OUT
 SPICE CONSTRUCTION JOINTS. SEE PLAN VIEWS FOR SPECIFIC
 BAR CALLOUTS.
 SEE EXPANSION JOINT 11 OF 271 EXPANSION JOINT 12 OF 241 AND
 PARAPET REINFORCEMENT NOT SHOWN ON THIS SHEET. REFER TO
 EXPANSION JOINT DETAILS SHEET FOR PARAPET REINFORCEMENT.



B-67-69 BILL OF BARS

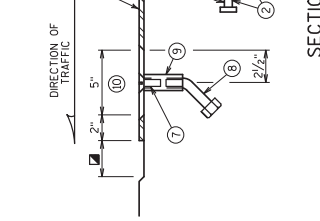
BAR MARK	NO. REQ'D.	LENGTH	SERIES	LOCATION
A501	X 30	6'-9"		PAVING BLOCK - HORIZONTAL
A602	X 86	28'-10"		DECK - TRANSVERSE
A403	X 70	7'-2"		DECK - HORIZ. BETWEEN ORDERS STAGES 1 & 2
A404	X 14	4'-7"		DECK - HORIZ. BETWEEN ORDERS STAGE 2
A405	X 14	1'-2"		DECK - HORIZ. BETWEEN ORDERS STAGE 1
A406	X 14	5'-3"		DECK - HORIZ. BETWEEN ORDERS STAGE 2
A601	X 50	6'-6"		DIAPHRAGM - HORIZ. BETWEEN ORDERS STAGES 1 & 2
A608	X 30	4'-6"		DIAPHRAGM - HORIZ. BETWEEN ORDERS STAGE 2
A503	X 30	4'-2"		DIAPHRAGM - HORIZ. BETWEEN ORDERS STAGE 1
A504	X 30	5'-4"		DIAPHRAGM - HORIZ. BETWEEN ORDERS STAGE 2
A411	X 57	3'-2"	X	PAVING BLOCK - ANCHOR
A512	X 57	3'-0"	X	DIAPHRAGM - STRIPUPS BETWEEN ORDERS
A413	X 240	3'-10"	X	PARAPET - VERTICAL
A414	X 56	4'-10"	X	PARAPET - VERTICAL
A415	X 52	4'-3"	X	PARAPET - VERTICAL
A416	X 4	4'-5"	X	PARAPET - VERTICAL

NOTE: DIMENSIONS ARE OUT TO OUT OF BAR.
BAR SIZE IS INDICATED BY THE FIRST OR FIRST TWO DIGITS OF A BAR MARK SIGNIFIES THE BAR SIZE.



SECTION A-A

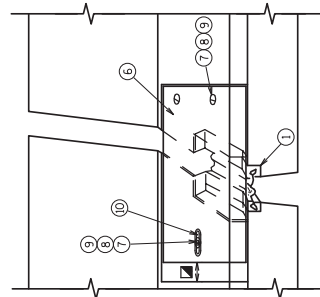
PLAN AT SLOPED FACE PARAPET
SOUTH PARAPET SHOWN, NORTH PARAPET MIRRORRED.



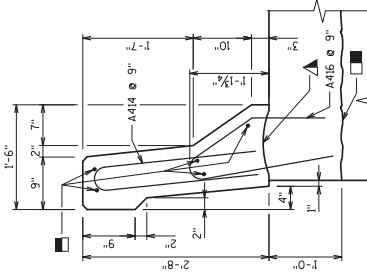
SECTION B-B

- LEGEND**
- ☒ BLOCK OUT CONCRETE 2" EACH SIDE OF JOINT OPENING
 - ☒ JOINT OPENING DIM. ALONG SKEW PLUS 1/2"
 - ☒ MASONRY ANCHORS, TYPE L NO. 5
 - ☆ EXISTING CONST. JOINT
 - ▲ NEW CONST. JOINT SAME LOCATION, STRIKE OFF AND LEAVE ROUGH.
 - ☐ CONST. JOINT LIMIT OF CONCRETE REMOVAL
 - ▣ PRESERVE AND REUSE EXISTING LONGITUDINAL REINFORCEMENT
 - * MATCH TOP ELEVATION OF REPLACEMENT PARAPET TO TOP ELEVATION OF EXISTING PARAPET

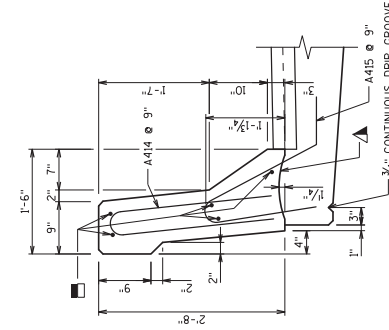
NOTE
SEE EXPANSION JOINT SHEETS FOR ADDITIONAL INFORMATION.



VIEW OF SLOPED FACE PARAPET
PLATES FROM ROADWAY

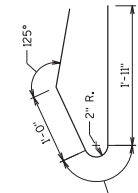


SECTION THRU
PARAPET ON ABUTMENT
AT JOINT REPAIR

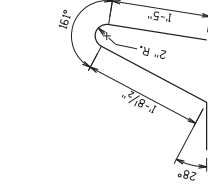


SECTION THRU
PARAPET ON BRIDGE
AT JOINT REPAIR *

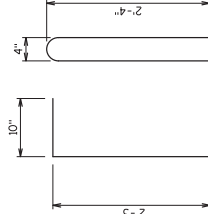
Addendum No. 01
ID 1060-44-70
Added Sheet 688F
August 20, 2015



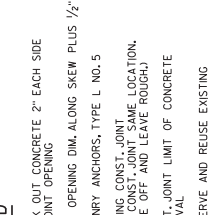
A416



A415



A414



A512

SCHEDULE OF ITEMS

REVISED:

CONTRACT:
20150915002PROJECT(S):
1060-44-70FEDERAL ID(S):
WISC 2015484

CONTRACTOR : _____

LINE NO	ITEM DESCRIPTION	APPROX. QUANTITY AND UNITS	UNIT PRICE		BID AMOUNT	
			DOLLARS	CTS	DOLLARS	CTS
0200	205.0100 Excavation Common ***	27,251.000 CY
0210	208.0100 Borrow ***	639.000 CY
0220	213.0100 Finishing Roadway (project) 0001. 1060-44-70	1.000 EACH
0230	305.0110 Base Aggregate Dense 3/4-Inch	1,914.000 TON
0240	305.0120 Base Aggregate Dense 1 1/4-Inch	34,434.000 TON
0250	305.0500 Shaping Shoulders	131.000 STA
0260	311.0110 Breaker Run	8,429.000 TON
0270	312.0110 Select Crushed Material	6,603.000 TON
0280	415.0090 Concrete Pavement 9-Inch	1,320.000 SY
0290	415.0410 Concrete Pavement Approach Slab	1,165.000 SY
0300	416.0610 Drilled Tie Bars	38.000 EACH

SCHEDULE OF ITEMS

REVISED:

CONTRACT:
20150915002PROJECT(S):
1060-44-70FEDERAL ID(S):
WISC 2015484

CONTRACTOR : _____

LINE NO	ITEM DESCRIPTION	APPROX. QUANTITY AND UNITS	UNIT PRICE		BID AMOUNT	
			DOLLARS	CTS	DOLLARS	CTS
1150	638.2601 Removing Signs Type I	20.000 EACH	.		.	
1160	638.2602 Removing Signs Type II	294.000 EACH	.		.	
1170	638.3000 Removing Small Sign Supports	203.000 EACH	.		.	
1180	638.3100 Removing Structural Steel Sign Supports	2.000 EACH	.		.	
1200	643.0100 Traffic Control (project) 0001. 1060-44-70	1.000 EACH	.		.	
1210	643.0300 Traffic Control Drums	129,818.000 DAY	.		.	
1220	643.0410 Traffic Control Barricades Type II	4,629.000 DAY	.		.	
1230	643.0705 Traffic Control Warning Lights Type A	9,172.000 DAY	.		.	
1240	643.0715 Traffic Control Warning Lights Type C	35,990.000 DAY	.		.	
1250	643.0800 Traffic Control Arrow Boards	1,020.000 DAY	.		.	
1260	643.0900 Traffic Control Signs	14,798.000 DAY	.		.	

SCHEDULE OF ITEMS

REVISED:

CONTRACT:
20150915002PROJECT(S):
1060-44-70FEDERAL ID(S):
WISC 2015484

CONTRACTOR : _____

LINE NO	ITEM DESCRIPTION	APPROX. QUANTITY AND UNITS	UNIT PRICE		BID AMOUNT	
			DOLLARS	CTS	DOLLARS	CTS
1270	643.0910 Traffic Control Covering Signs Type I	2.000 EACH
1280	643.0920 Traffic Control Covering Signs Type II	20.000 EACH
1290	643.1000 Traffic Control Signs Fixed Message	144.000 SF
1300	643.1050 Traffic Control Signs PCMS	1,304.000 DAY
1310	643.1055.S Truck or Trailer Mounted Attenuator	272.000 DAY
1320	643.3000 Traffic Control Detour Signs	2,881.000 DAY
1330	646.0106 Pavement Marking Epoxy 4-Inch	87,542.000 LF
1340	646.0600 Removing Pavement Markings	66,759.000 LF
1350	646.0841.S Pavement Marking Grooved Wet Reflective Contrast Tape 4-Inch	10,021.000 LF
1360	646.0843.S Pavement Marking Grooved Wet Reflective Contrast Tape 8-Inch	10,804.000 LF

SCHEDULE OF ITEMS

REVISED:

CONTRACT:
20150915002PROJECT(S):
1060-44-70FEDERAL ID(S):
WISC 2015484

CONTRACTOR : _____

LINE NO	ITEM DESCRIPTION	APPROX. QUANTITY AND UNITS	UNIT PRICE		BID AMOUNT	
			DOLLARS	CTS	DOLLARS	CTS
1370	647.0158 Pavement Marking Arrows Preformed Thermoplastic Type 1	4.000 EACH	.		.	
1380	647.0168 Pavement Marking Arrows Preformed Thermoplastic Type 2	14.000 EACH	.		.	
1390	647.0178 Pavement Marking Arrows Preformed Thermoplastic Type 3	1.000 EACH	.		.	
1400	647.0198 Pavement Marking Arrows Preformed Thermoplastic Type 5	2.000 EACH	.		.	
1410	647.0358 Pavement Marking Words Preformed Thermoplastic	17.000 EACH	.		.	
1420	647.0568 Pavement Marking Stop Line Preformed Thermoplastic 18-Inch	257.000 LF	.		.	
1430	647.0726 Pavement Marking Diagonal Epoxy 12-Inch	93.000 LF	.		.	
1440	647.0746 Pavement Marking Diagonal Epoxy 24-Inch	676.000 LF	.		.	
1450	647.0955 Removing Pavement Markings Arrows	15.000 EACH	.		.	
1460	647.0965 Removing Pavement Markings Words	12.000 EACH	.		.	

SCHEDULE OF ITEMS

REVISED:

CONTRACT:
20150915002PROJECT(S):
1060-44-70FEDERAL ID(S):
WISC 2015484

CONTRACTOR : _____

LINE NO	ITEM DESCRIPTION	APPROX. QUANTITY AND UNITS	UNIT PRICE		BID AMOUNT	
			DOLLARS	CTS	DOLLARS	CTS
1470	649.0400 Temporary Pavement Marking Removable Tape 4-Inch	172,871.000 LF	.		.	
1480	649.1200 Temporary Pavement Marking Stop Line Removable Tape 18-Inch	150.000 LF	.		.	
1490	649.2100 Temporary Raised Pavement Markers	244.000 EACH	.		.	
1500	652.0225 Conduit Rigid Nonmetallic Schedule 40 2-Inch	323.000 LF	.		.	
1510	652.0235 Conduit Rigid Nonmetallic Schedule 40 3-Inch	158.000 LF	.		.	
1520	652.0615 Conduit Special 3-Inch	130.000 LF	.		.	
1530	652.0700.S Install Conduit into Existing Item	11.000 EACH	.		.	
1540	652.0800 Conduit Loop Detector	112.000 LF	.		.	
1550	653.0135 Pull Boxes Steel 24x36-Inch	2.000 EACH	.		.	
1560	653.0140 Pull Boxes Steel 24x42-Inch	1.000 EACH	.		.	
1570	653.0905 Removing Pull Boxes	3.000 EACH	.		.	

SCHEDULE OF ITEMS

REVISED:

CONTRACT:
20150915002PROJECT(S):
1060-44-70FEDERAL ID(S):
WISC 2015484

CONTRACTOR : _____

LINE NO	ITEM DESCRIPTION	APPROX. QUANTITY AND UNITS	UNIT PRICE		BID AMOUNT	
			DOLLARS	CTS	DOLLARS	CTS
1580	654.0105 Concrete Bases Type 5	15.000 EACH
1590	654.0220 Concrete Control Cabinet Bases Type 10	6.000 EACH
1600	655.0260 Cable Traffic Signal 12-14 AWG	445.000 LF
1610	655.0515 Electrical Wire Traffic Signals 10 AWG	348.000 LF
1620	655.0610 Electrical Wire Lighting 12 AWG	1,350.000 LF
1630	655.0630 Electrical Wire Lighting 4 AWG	3,921.000 LF
1640	655.0700 Loop Detector Lead In Cable	303.000 LF
1650	655.0800 Loop Detector Wire	346.000 LF
1660	657.0100 Pedestal Bases	6.000 EACH
1670	657.0255 Transformer Bases Breakaway 11 1/2-Inch Bolt Circle	14.000 EACH
1680	657.0425 Traffic Signal Standards Aluminum 15-FT	6.000 EACH

SCHEDULE OF ITEMS

REVISED:

CONTRACT:
20150915002PROJECT(S):
1060-44-70FEDERAL ID(S):
WISC 2015484

CONTRACTOR : _____

LINE NO	ITEM DESCRIPTION	APPROX. QUANTITY AND UNITS	UNIT PRICE		BID AMOUNT	
			DOLLARS	CTS	DOLLARS	CTS
1690	661.0200 Temporary Traffic Signals for Intersections (location) 3001. IH 94 EB Rmps & STH 164/CTH J	LUMP	LUMP			.
1700	661.0200 Temporary Traffic Signals for Intersections (location) 3002. IH 94 WB Rmps & STH 164/CTH J	LUMP	LUMP			.
1710	661.0300 Generators	4.000 DAY		.		.
1720	662.1032.S Ramp Closure Gates Hardwired 32-FT	3.000 EACH		.		.
1730	662.1037.S Ramp Closure Gates Hardwired 37-FT	2.000 EACH		.		.
1740	662.1040.S Ramp Closure Gates Hardwired 40-FT	3.000 EACH		.		.
1750	662.2028.S Ramp Closure Gates Solar 28-FT	1.000 EACH		.		.
1760	662.2030.S Ramp Closure Gates Solar 30-FT	2.000 EACH		.		.
1770	662.2037.S Ramp Closure Gates Solar 37-FT	1.000 EACH		.		.
1780	662.2040.S Ramp Closure Gates Solar 40-FT	2.000 EACH		.		.

SCHEDULE OF ITEMS

REVISED:

CONTRACT:
20150915002PROJECT(S):
1060-44-70FEDERAL ID(S):
WISC 2015484

CONTRACTOR : _____

LINE NO	ITEM DESCRIPTION	APPROX. QUANTITY AND UNITS	UNIT PRICE		BID AMOUNT	
			DOLLARS	CTS	DOLLARS	CTS
1790	662.3028.S Ramp Closure Gate Arms Stockpile 28-FT	1.000 EACH	.		.	
1800	662.3030.S Ramp Closure Gate Arms Stockpile 30-FT	1.000 EACH	.		.	
1810	662.3032.S Ramp Closure Gate Arms Stockpile 32-FT	1.000 EACH	.		.	
1820	662.3037.S Ramp Closure Gate Arms Stockpile 37-FT	1.000 EACH	.		.	
1830	662.3040.S Ramp Closure Gate Arms Stockpile 40-FT	1.000 EACH	.		.	
1840	662.4000.S Ramp Closure Gate Flashers Stockpile	1.000 EACH	.		.	
1850	670.0100 Field System Integrator 3001. FTMS	LUMP	LUMP		.	
1860	670.0200 ITS Documentation 3001. FTMS	LUMP	LUMP		.	
1870	675.0400.S Install Ethernet Switch	1.000 EACH	.		.	
1880	678.0006 Install Fiber Optic Cable Outdoor Plant 6-CT	1,148.000 LF	.		.	
1890	678.0400 Fiber Optic Termination	12.000 EACH	.		.	

SCHEDULE OF ITEMS

REVISED:

CONTRACT:
20150915002

PROJECT(S):
1060-44-70

FEDERAL ID(S):
WISC 2015484

CONTRACTOR : _____

LINE NO	ITEM DESCRIPTION	APPROX. QUANTITY AND UNITS	UNIT PRICE		BID AMOUNT	
			DOLLARS	CTS	DOLLARS	CTS
1900	678.0500 Communication System Testing 3001. FTMS	LUMP	LUMP			.
1910	690.0150 Sawing Asphalt	43,649.000 LF	.		.	
1920	690.0250 Sawing Concrete	1,907.000 LF	.		.	
1930	715.0415 Incentive Strength Concrete Pavement	500.000 DOL	1.00000		500.00	
1940	ASP.1T0A On-the-Job Training Apprentice at \$5.00/HR	2,200.000 HRS	5.00000		11000.00	
1950	ASP.1T0G On-the-Job Training Graduate at \$5.00/HR	3,000.000 HRS	5.00000		15000.00	
1960	SPV.0060 Special 0001. Salvage Terminal High-Tension Cable TL-3, Gibraltar	4.000 EACH	.		.	
1970	SPV.0060 Special 0002. Terminal High-Tension Cable, TL-3, Gibraltar	4.000 EACH	.		.	
1980	SPV.0060 Special 0003. Reinstall Terminal High-Tension Cable TL-3, Gibraltar	4.000 EACH	.		.	
1990	SPV.0060 Special 1000. Lamp Disposal High Intensity Discharge	2.000 EACH	.		.	

SCHEDULE OF ITEMS

REVISED:

CONTRACT:
20150915002PROJECT(S):
1060-44-70FEDERAL ID(S):
WISC 2015484

CONTRACTOR : _____

LINE NO	ITEM DESCRIPTION	APPROX. QUANTITY AND UNITS	UNIT PRICE		BID AMOUNT	
			DOLLARS	CTS	DOLLARS	CTS
2000	SPV.0060 Special 1001. Group Luminaire Maintenance 30-Foot 250W HPS	2.000 EACH	.		.	
2010	SPV.0060 Special 1002. Removing And Reinstalling Lighting Units	1.000 EACH	.		.	
2020	SPV.0060 Special 1300. Ground Rod	6.000 EACH	.		.	
2030	SPV.0060 Special 3001. Install Fiber Optic Media Converter	1.000 EACH	.		.	
2040	SPV.0060 Special 4000. Cleaning and Painting Bearings	17.000 EACH	.		.	
2050	SPV.0060 Special 4001. Clean Deck Inlets	8.000 EACH	.		.	
2060	SPV.0060 Special 8000. Cover Plates Temporary Special	1.000 EACH	.		.	
2070	SPV.0090 Special 0001. Salvage High-Tension Cable TL-3, Socketed, Gibraltar	2,685.000 LF	.		.	
2080	SPV.0090 Special 0002. High-Tension Cable TL-3, Socketed, Gibraltar	2,280.000 LF	.		.	
2090	SPV.0090 Special 0003. Reinstall High-Tension Cable TL-3, Socketed, Gibraltar	2,280.000 LF	.		.	

SCHEDULE OF ITEMS

REVISED:

CONTRACT:
20150915002PROJECT(S):
1060-44-70FEDERAL ID(S):
WISC 2015484

CONTRACTOR : _____

LINE NO	ITEM DESCRIPTION	APPROX. QUANTITY AND UNITS	UNIT PRICE		BID AMOUNT	
			DOLLARS	CTS	DOLLARS	CTS
2100	SPV.0105 Special 0001. Survey Project 1060-44-70	LUMP	LUMP			.
2110	SPV.0105 Special 1000. Maintenance of Lighting Systems	LUMP	LUMP			.
2120	SPV.0105 Special 3001. Temp EVP System IH 94 EB Ramps & STH 164 / CTH J	LUMP	LUMP			.
2130	SPV.0105 Special 3002. Temp EVP System IH 94 WB Ramps & STH 164 / CTH J	LUMP	LUMP			.
2140	SPV.0105 Special 3003. Temp Vehicle Detction System for Intrsects IH 94 EB Ramps & STH 164/CTH J	LUMP	LUMP			.
2150	SPV.0105 Special 3004. Temp Vehicle Detection System for Intrsects IH 94 WB Ramps & STH 164/CTH J	LUMP	LUMP			.
2160	SPV.0105 Special 3005. Covering Traffic Signal Heads IH 94 Ramps & STH 164 / CTH J	LUMP	LUMP			.
2170	SPV.0105 Special 3007. Remove Traffic Signals IH 94 & STH 164/CTH J	LUMP	LUMP			.
2180	SPV.0105 Special 3008. Remove Loop Detector Wire & Lead- in Cable IH 94 & STH 164/CTH J	LUMP	LUMP			.

SCHEDULE OF ITEMS

REVISED:

CONTRACT:
20150915002

PROJECT(S):
1060-44-70

FEDERAL ID(S):
WISC 2015484

CONTRACTOR : _____

LINE NO	ITEM DESCRIPTION	APPROX. QUANTITY AND UNITS	UNIT PRICE		BID AMOUNT	
			DOLLARS	CTS	DOLLARS	CTS
2190	SPV.0105 Special 4000. Vegetation Removal B-67-14	LUMP	LUMP			.
2200	SPV.0105 Special 4001. Vegetation Removal B-67-60	LUMP	LUMP			.
2210	SPV.0105 Special 4002. Vegetation Removal B-67-61	LUMP	LUMP			.
2220	SPV.0105 Special 4003. Vegetation Removal B-67-62	LUMP	LUMP			.
2230	SPV.0105 Special 4004. Vegetation Removal B-67-63	LUMP	LUMP			.
2240	SPV.0105 Special 4005. Vegetation Removal B-67-65	LUMP	LUMP			.
2250	SPV.0105 Special 4006. Vegetation Removal B-67-66	LUMP	LUMP			.
2260	SPV.0105 Special 4007. Vegetation Removal B-67-67	LUMP	LUMP			.
2270	SPV.0105 Special 4008. Vegetation Removal B-67-68	LUMP	LUMP			.
2280	SPV.0105 Special 4009. Vegetation Removal B-67-140	LUMP	LUMP			.
2290	SPV.0105 Special 4010. Vegetation Removal B-67-234	LUMP	LUMP			.

SCHEDULE OF ITEMS

REVISED:

CONTRACT:
20150915002

PROJECT(S):
1060-44-70

FEDERAL ID(S):
WISC 2015484

CONTRACTOR : _____

LINE NO	ITEM DESCRIPTION	APPROX. QUANTITY AND UNITS	UNIT PRICE		BID AMOUNT	
			DOLLARS	CTS	DOLLARS	CTS
2300	SPV.0105 Special 4011. Vegetation Removal B-67-235	LUMP	LUMP			.
2310	SPV.0105 Special 4020. Fence Removal and Replacement B-67-234	LUMP	LUMP			.
2320	SPV.0105 Special 4021. Fence Removal and Replacement B-67-235	LUMP	LUMP			.
2330	SPV.0165 Special 4000. Removing Loose Concrete	438.000 SF	.			.
2340	SPV.0170 Special 0001. Proof Rolling	192.000 STA	.			.
2350	SPV.0180 Special 0001. Geogrid Reinforcement	865.000 SY	.			.
2360	SPV.0180 Special 4000. Clean Abutment Seats	111.000 SY	.			.
2370	SPV.0195 Special 0001. Cold Patch	30.000 TON	.			.
2380	SPV.0035 Special 0001. EBS Excavation	5,184.000 CY	.			.
2390	SPV.0105 Special 0002. Field Office Fixed	LUMP	LUMP			.
	SECTION 0001 TOTAL					.
	TOTAL BID					.