



Wisconsin Department of Transportation

February 26, 2018

Division of Transportation Systems Development

Bureau of Project Development
 4802 Sheboygan Avenue, Rm 601
 P O Box 7916
 Madison, WI 53707-7916

Telephone: (608) 266-1631
 Facsimile (FAX): (608) 266-8459

NOTICE TO ALL CONTRACTORS:

Proposal #03: 3300-01-73, WISC 2018 137
C Lake Mills, Main Street
Topel Street to Madison Street
STH 89
Jefferson County

3300-01-74
C Lake Mills, Main Street
Topel Street to Madison Street
STH 89
Jefferson County

Letting of March 13, 2018

This is Addendum No. 01, which provides for the following:

Special Provisions:

Revised Special Provisions	
Article No.	Description
4	Traffic
6	Utilities
27	Granular Backfill, Sanitary Sewer, Item SPV.0035.26; Water Main, Item SPV.0035.27
41	Water Main Gate Valve and Valve Box, 6-Inch, SPV.0060.31, 8-Inch, SPV.0060.32; 10-Inch, SPV.0060.33; 12-Inch, SPV.0060.34
59	Water Main, Ductile Iron (DI), 6-Inch, SPV.0090.28, 8-Inch, SPV.0090.29; 10-Inch, SPV.0090.30; 12-Inch, SPV.0090.31
61	Sanitary Sewer, Polyvinyl Chloride (PVC), SDR 35 8-Inch, Item SPV.0090.34; SDR 35 10-Inch, Item SPV.0094.35; SDR 35 12-Inch, Item SPV.0090.36; SDR 26 12-Inch, Item SPV.0090.37; SDR 35 15-Inch Item SPV.0090.38
62	Water Main Insulation, Item SPV.0090.39

Added Special Provisions	
Article No.	Description
68	Pedestrian Activated Flashing Beacon Assembly

Schedule of Items:

Revised Bid Item Quantities					
Bid Item	Item Description	Unit	Old Quantity	Revised Quantity	Proposal Total
625.0100	Topsoil	SY	12,343	470	12,813
634.0616	Posts Wood 4x6-Inch x 16-FT	EACH	20	-2	18
637.2210	Signs Type II Reflective H	SF	656.56	3.00	659.56

637.2230	Signs Type II Reflective F	SF	147	33	180
654.0101	Concrete Bases Type 1	EACH	8	1	9
655.0615	Electrical Wire Lighting 10 AWG	LF	1,749	345	2,094
657.0100	Pedestal Bases	EACH	4	4	8
SPV.0090.39	Water Main Insulation	LF	100	450	550

Added Bid Item Quantities					
Bid Item	Item Description	Unit	Old Quantity	Revised Quantity	Proposal Total
655.0240	Cable Traffic Signal 7-14 AWG	LF	0	130	130
657.0420	Traffic Signal Standards Aluminum 13-FT	EACH	0	4	4
658.0500	Pedestrian Push Buttons	EACH	0	4	4
SPV.0060.54	Pedestrian Activated Flashing Beacon	EACH	0	2	2

Deleted Bid Item Quantities					
Bid Item	Item Description	Unit	Old Quantity	Revised Quantity	Proposal Total
625.0500	Salvaged Topsoil	SY	470	-470	0
654.0102	Concrete Bases Type 2	EACH	1	-1	0

Plan Sheets:

Revised Plan Sheets	
Plan Sheet	Plan Sheet Title (brief description of changes to sheet)
2	General Notes (Updated contact information for WE Energies and added Contact information for WisDNR for water line utility)
88	Water Main Details (Revised note regarding joint restraining)
89	Water Service and insulation Details (Revised notes regarding insulation thickness)
120	Permanent Signing & Marking (Add push button signs and adjusted pole location)
125	Permanent Signing & Marking (Add Ped. Crossing signs, arrows and push button signs. Revise location of Bike lane sign and pole.)
127	Lighting Plan General Notes (Updated notes to reflect change from using RRFB to Pedestrian Activated Beacons)
132	Lighting Plan Layouts (Revised beacon information at Milton Street to reflect changes from using RRFBs to Pedestrian Activated Beacons)
137	Lighting Plan Layouts (Revised beacon information at Water Street to reflect changes from using RRFBs to Pedestrian Activated Beacons)
190	Miscellaneous Quantities (Delete item Salvaged topsoil, Revise quantity for Topsoil item)
193	Miscellaneous Quantities (Revise Permanent Signs and posts quantities)
194	Miscellaneous Quantities (Revise Permanent Sign quantities)
202	Miscellaneous Quantities (Revise notes referring to RRFBs)
203	Miscellaneous Quantities (Revise bid item quantities and break out a new table for the Pedestrian Activated Flashing Beacon items.)
205	Miscellaneous Quantities (Revise Water Main Insulation quantity)
206	Miscellaneous Quantities (Revise Water Main Insulation quantity)
208	Miscellaneous Quantities (Revise Unit of measurement for SPV.0035.26 to CY)

Added Plan Sheets	
Plan Sheet	Plan Sheet Title (brief description of why sheet was added)
337A	Sign Plate – Added sign RR10-4D, L & R
347A	Sign Plate – Added sign W11-2

The responsibility for notifying potential subcontractors and suppliers of these changes remains with the prime contractor.

Sincerely,

Mike Coleman

Proposal Development Specialist
Proposal Management Section

ADDENDUM NO. 01

3300-01-73/74

February 26, 2018

Special Provisions

4. Traffic

*Insert the following after paragraph seven under section titled **B Vehicle Access**:*

Beginning September 4th, 2018 and continuing until the Winter Suspension, provide and maintain a drivable 20' wide access between Lake Park Place and both intersections of Catlin Drive so that school busses and other drivers can get to and from the Lake Mills high school. This may require staged construction and the use of pavement gaps at these locations.

*Replace paragraphs two and three under section titled **C Intersection Closures** with the following:*

Cross traffic may each be closed for a maximum number of times prior to September 4th, 2018 as follows:

- One time per intersection to complete all utility and storm sewer construction, subgrade construction, and base aggregate dense placement for a maximum of 7 calendar days.
- One time per intersection for curb and gutter and concrete paving for a maximum of 7 calendar days.

On or after September 4th, 2018, the contractor shall be required to maintain access between Lake Park Place and Catlin Dr. as previously described in section B of this article. The contractor may request partial closures of the Lake Park Place intersection to the engineer in writing by providing detailed workplan of the planned closure times and schedule of work items for the intersection. The engineer will review the workplan and determine if proper emergency and school bus access is provided as required in these special provisions.

6. Utilities.

*Replace subsection titled **Department of Natural Resources (DNR)** under section titled **Project 3300-01-73** with the following:*

Department of Natural Resources (DNR) has a 24-inch water main crossing South Main St. at approximately Station 85+20.

The existing 24" water main will not be relocated and will remain in place.

Determine the exact location and depth of the pipe by using the Utility Line Opening bid item.

The contractor shall exercise extreme caution when working over and around the DNR facilities.

Notify the DNR project engineer and Hatchery Operations Supervisor 14 to 16 calendar days in advance of when the contractor will be working on site near the DNR's water line. Follow-up with a confirmation notice to the engineer and the DNR not less than 3 working days so the DNR representatives can be on site.

Field contact for the DNR is Ron Daggett, DNR project engineer, 3911 Fish Hatchery Road, Fitchburg, WI 53711, (608) 275-3235 Office or email Ronald.Daggett@wisconsin.gov and Steve Merson, Hatchery Operations Supervisor, (920) 648-8012 Office or email

Steve.Merson@wisconsin.gov when the contractor will be on site, so they may be present during contractor activity near the water line.

*Replace the last paragraph under subsection titled **We Energies - Gas** under section titled **Project 3300-01-73** with the following:*

We Energies – gas field contact is Jacob Schoenung, 500 S 116th St., West Allis, WI 53024, (262) 844-6705 office, (414) 416-3365 mobile or email jacob.schoenung@we-energies.com.

*Delete entire section titled **Project 3300-01-74***

27. Granular Backfill, Sanitary Sewer, Item SPV.0035.26; Water Main, Item SPV.0035.27

*Replace paragraph eight under section titled **C Construction** with the following:*

The City of Lake Mills is responsible for providing and paying for a geotechnical consultant to perform compaction testing of trench backfill. A compaction test shall be performed approximately every 50 linear feet of utility trench and one test per water service or sanitary lateral trench. Additional tests may be requested by the Engineer, Department, or City of Lake Mills as deemed necessary.

*Replace paragraph three under section titled **E Payment** with the following:*

Payment is full compensation for work herein specified and for all labor, tools, equipment and incidentals required to complete the work.

41. Water Main Gate Valve and Valve Box, 6-Inch, SPV.0060.31; 8-inch, SPV.0060.32; 10-Inch, SPV.0060.33; 12-Inch, SPV.0060.34

*Replace paragraph one under section titled **B.1 Valves** with the following:*

Valves shall be Mueller A-2360, Waterous Series 2500, or equal right close mechanical joint resilient seat valves. Valve body nuts and bolts shall be stainless steel.

59. Water Main, Ductile Iron (DI), 6-Inch, SPV.0090.28, 8-Inch, SPV.0090.29; 10-Inch, SPV.0090.30; 12-Inch, SPV.0090.31

*Replace paragraph seventeen under section titled **B Materials** with the following:*

Pipe restraint fittings shall be provided as follows:

- a) For ductile iron pipe with ductile iron mechanical joints MEGALUG Series 1100 or 1100SD by EBAA Iron Sales, Inc.
- b) For ductile iron pipe with ductile iron push-on joints MEGALUG Series 1100HD or 1700 by EBAA Iron Sales, Inc.

*Add the following paragraph at the end of section titled **B Materials**:*

Polyethylene encasement shall conform to AWWA C105. Film shall be Class C-Carbon Black, with a minimum thickness of 0.008 inches (8 mils). Tape for securing the fill shall be a thermoplastic

material with a pressure sensitive adhesive face capable of bonding to metal, asphaltic coating, and polyethylene. Tape shall have a minimum thickness of 8 mils and a minimum width of 1 inch.

*Replace paragraph four under section titled **C.5 Pipe Laying** with the following:*

Bedding material shall be hard and durable and shall be made by crushing sound limestone or dolomite ledge rock, or crushed gravel aggregate. Bedding material shall conform to the requirements of ASTM 33. Ductile iron pipe shall be bedded according to the Class B bedding detail in the drawings or Type 3 laying condition of AWWA C600. Bedding material shall conform to Size No. 57, Size No. 8, or Size No. 9 below. Where ductile iron pipe is polyethylene encased, bedding material shall conform to Size No. 8 or No. 9 below.

*Replace the table after paragraph four under section titled **C.5 Pipe Laying** with the following:*

PERCENTAGE BY WEIGHT PASSING INDICATED SIEVE

Size	1 1/2 IN	1 IN	3/4 IN	1/2 IN	3/8 IN	No. 4	No. 8	No. 16	No. 30	No. 100
57	100	95-100		25-60		0-10	0-5			
8				100	85-100	10-30	0-10	0-5		
9				100	75-100	0-25	0-5			
10					100	85-100				10-30

*Add the following paragraph after paragraph eight under section titled **C.5 Pipe Laying**:*

Contractor shall provide polyethylene encasement on all water main, fittings, fire hydrant leads, and fire hydrant barrels where such water system infrastructure is installed in areas of contaminated soil and/or groundwater. The polyethylene film shall be as free as is commercially possible of gels, streaks, pinholes, particles of foreign matter, and undispersed raw materials. There shall be no other visible defect such as holes, tears, blisters, or thinning out at folds. The areas where known potential for contamination exists are shown on the Drawings however, the extent of contamination and required polyethylene encasement in these known areas or additional areas discovered during construction shall be determined by the City of Lake Mills' geotechnical consultant during construction.

*Replace paragraph twelve under section titled **C.6 Backfilling** with the following:*

The City of Lake Mills is responsible for providing and paying for a geotechnical consultant to perform compaction testing of trench backfill. A compaction test shall be performed approximately every 50 linear feet of utility trench and one test per water service or sanitary lateral trench. Additional tests may be requested by the Engineer, Department, or City of Lake Mills as deemed necessary.

- 61. Sanitary Sewer, Polyvinyl Chloride (PVC), SDR 35 8-Inch, Item SPV.0090.34; SDR 35 10-Inch, Item SPV.0090.35; SDR 35 12-Inch, Item SPV.0090.36; SDR 26 12-Inch, Item SPV.0090.37; SDR 35 15-Inch, Item SPV.0090.38**

*Replace paragraph three under section titled **C.18 Backfill Consolidation** with the following:*

Backfill material beneath paved areas or future paved areas and within 5 feet of paved areas or future paved areas shall be consolidated as follows: Within 3 feet of the surface 95% of maximum dry density, below 3 feet from the surface to 1 foot above the pipe 90% of maximum dry density, as determined by the modified Proctor Test (ASTM D1557). Unless otherwise specified, compact backfill material placed in other areas to the point where no additional consolidation can be observed from the compaction equipment being used.

*Replace paragraph five under section titled **C.18 Backfill Consolidation** with the following:*

The City of Lake Mills is responsible for providing and paying for a geotechnical consultant to perform compaction testing of trench backfill. A compaction test shall be performed approximately every 50 linear feet of utility trench and one test per water service or sanitary lateral trench. Additional tests may be requested by the Engineer, Department, or City of Lake Mills as deemed necessary.

- 62. Water Main Insulation, Item SPV.0090.39**

*Replace paragraph one under section titled **B Materials** with the following:*

Water Main Insulation shall be 4 inches total thickness of extruded polystyrene boards.

*Replace paragraph three under section titled **E Payment** with the following:*

Payment is full compensation to furnish and install polystyrene boards with 4 inches of total thickness at the locations shown on the plans and additional locations as identified by Engineer or City of Lake Mills.

- 68. Pedestrian Activated Flashing Beacon Assembly, Item SPV.0060.54.**

A Description

This special provision describes furnishing and installing a Pedestrian Activated Flashing Beacon Assembly for a pedestrian crosswalk.

B Materials

Furnishing and installing of 13-foot poles, pole cap, pedestal base, concrete base, conduit and wire from pole to pole, pedestrian push buttons, and the electrical services for these devices are paid for separately.

Materials to be furnished under this item include the control box(s), all necessary controls, four (4) LED yellow flashers, all mounting hardware for control box(s), flashers, and wire within each pole from control box, flashers and push buttons. The yellow LED flashers shall be 12-inch individual LED signal assemblies from the WisDot Approved Products listings and conforming to Section 658 Traffic Signals of the Standard Specification. The control box shall be a lockable, weather-tight pole mounted box with internal controls to receive and process pedestrian push button calls and control four LED flashers. Controls shall operate at 120 volts AC. The hardware shall be consistent with that used for traffic signals as described elsewhere in these specifications. All materials are subject to review and approval by the City of Lake Mills.

C Construction

Pedestrian Activated Flashing Beacon Assembly shall consist of two yellow flashers per pole, each flasher facing opposing traffic directions, with one pair of flashers on each side of the street, at designated pedestrian crosswalks. Each designated crosswalk shall consist of two poles in the terrace, one on each side of the street. The pole mounted flashers shall be installed above the pedestrian crossing sign on each pole. Refer to project signing sheets for signs to be attached to each pole. The control box, with all necessary control components, shall be mounted on the pole closest to the electric service lateral at each crosswalk. Refer to plan drawings for service lateral location. The control system shall receive a pedestrian push button call from either pole at the crosswalk and allow the owner to adjust the amount of time the flashers will be active upon receiving a pedestrian call. The increments shall be by seconds and range from 30-seconds to 180-seconds. Flashers for both traffic directions shall be active when any push button call is received. Flashers facing the same direction of traffic shall operate on an alternate pattern. The flash rate shall be once per second, with the flasher illuminated for approximately 0.5 seconds during each cycle.

D Measurement

The department will measure Pedestrian Activated Flashing Beacon Assembly by the EACH acceptably completed and in working order.

E Payment

The department will pay for measured quantities at the contract unit price under the following bid item:

ITEM NUMBER	DESCRIPTION	UNIT
SPV.0060.54	Pedestrian Activated Flashing Beacon Assembly	EACH

Payment is full compensation for furnishing and installing all materials for a complete Pedestrian Activated Flashing Beacon Assembly at a pedestrian crosswalk and for furnishing all labor, tools, equipment, and incidentals necessary to complete the contract work.

Schedule of Items

Attached, dated February 26, 2018, are the revised Schedule of Items Pages 1 – 14.

Plan Sheets

The following 8½ x 11-inch sheets are attached and made part of the plans for this proposal:
Revised: 2, 88, 89, 120, 125, 127, 132, 137, 190, 193, 194, 202, 203, 205, 206 and 208.
Added: 337A, 347A,

END OF ADDENDUM

GENERAL NOTES

- NO TREES OR SHRUBS THAT ARE NOT MARKED ON THE PLAN TO BE REMOVED SHALL BE REMOVED WITHOUT THE APPROVAL OF THE ENGINEER IN THE FIELD.
- THE LOCATIONS OF EXISTING AND PROPOSED UTILITY INSTALLATIONS AS SHOWN ON THE PLANS ARE APPROXIMATE. THERE MAY BE OTHER UTILITY INSTALLATIONS WITHIN THE PROJECT LIMITS THAT ARE NOT SHOWN. CONTRACTORS SHALL COORDINATE WITH THE COUNTY ENGINEER'S OFFICE WITH A CALL TO DIGGERS HOTLINE AND/OR A DIRECT CALL TO THE UTILITIES THAT HAVE FACILITIES IN THE AREA. NOT ALL UTILITIES ARE MEMBERS OF DIGGERS HOTLINE.
- ASPHALTIC SURFACE AND WEIGHT CALCULATIONS ARE BASED ON 112 LB/SY IN PLACE THE 3.5" AND 5" ASPHALTIC SURFACE IN TWO LAYERS.
- THE TRACK COAT BETWEEN LAYERS OF ASPHALTIC SURFACE. THE APPLICATION RATE IS 0.05 GALLONS PER SQUARE YARD OR AS DIRECTED BY THE ENGINEER.
- ALL CONTRACTOR'S PAVING OPERATIONS SHALL BE CONSISTENT WITH THE PLAN TYPICAL SECTIONS AND CONSTRUCTED TO PREVENT ASPHALTIC SURFACE LONGITUDINAL JOINTS FROM BEING LOCATED WITHIN A DRIVING, TURNING, BIKE OR PARKING LANE.
- ASPHALT PAVING LIMITS AT INTERSECTIONS ARE TO BE DETERMINED IN THE FIELD BY THE ENGINEER AND SHALL HAVE BUTT JOINTS.
- SAWCUTS, AS SHOWN ON THE PLANS, ARE SUGGESTED LOCATIONS AND MAY BE ADJUSTED AT THE DISCRETION OF THE ENGINEER TO BETTER SUIT FIELD CONDITIONS.
- EXACT SIGN LOCATIONS SHOWN ON THE PLANS ARE APPROXIMATE AND THE LOCATIONS OF SIGNS ARE TO BE DETERMINED BY THE ENGINEER.
- THE EROSION CONTROL DEVICES AS SHOWN ON THE EROSION CONTROL SHEETS ARE AT SUGGESTED LOCATIONS. EXACT LOCATIONS WILL BE DETERMINED BY THE ENGINEER. EROSION CONTROL DEVICES SHALL BE PLACED IN SEQUENCE WITH CONSTRUCTION OPERATIONS OR AS DETERMINED BY THE ENGINEER.
- INLETS SHALL BE COVERED AS NECESSARY TO PREVENT CONSTRUCTION MATERIAL FROM FALLING INTO THE INLETS.
- ALL OPENINGS OF HOLES BELOW SUBGRADE RESULTING FROM REMOVALS OR ABANDONMENTS SHALL BE BACKFILLED WITH GRANULAR MATERIAL AND COMPACTED. GRANULAR MATERIAL IS INCIDENTAL TO THE REMOVAL ITEM.
- ALL PROPERTY LINES IN PLANS ARE APPROXIMATE.
- THE LOCATION OF STOP LINES SHALL BE DETERMINED IN THE FIELD BY THE ENGINEER.
- CURB AND GUTTER PLAN GRADES ARE AT THE FLANGE LINE UNLESS OTHERWISE NOTED.
- RADIUS DIMENSIONS FOR THE CURB AND GUTTER ARE TO THE FLANGE OF THE CURB.
- UTILITY LINES IN CROSS SECTIONS ARE FOR HORIZONTAL REFERENCE ONLY.
- RIGHT OF WAY LINES SHOWN IN THE CROSS SECTIONS ARE APPROXIMATE.
- DISTURBED AREAS WITHIN THE RIGHT-OF-WAY SHALL BE FERTILIZED, SEEDED AND MULCHED.
- CONSTRUCT INSIDE EDGE OF SIDEWALK 1/2 INCH HIGHER THAN TOP OF CURB WHEN THEY ARE ADJACENT TO EACH OTHER.
- SIDEWALK REPLACEMENT SHOULD BE TO THE NEAREST JOINT.
- NEW STEPS OR NEW DROPS BETWEEN ENTRANCES AND SIDEWALK SHALL NOT BE ADDED AT ANY LOCATION WITHIN THE PROJECT UNLESS APPROVED BY THE ENGINEER.
- CONTRACTOR SHALL MAINTAIN ACCESS TO ALL DRIVEWAYS AT ALL TIMES EXCEPT WHEN PAVING OR INSTALLING UTILITIES THAT REQUIRE THE DRIVEWAY TO BE CLOSED. ACCESS TO DRIVEWAY SHALL BE RE-ESTABLISHED IMMEDIATELY AFTER PAVEMENT OR UTILITIES ARE INSTALLED.

Addendum No. 01
 ID 3300-01-73
 Revised Sheet 2
 February 26, 2018

UTILITIES AND OTHER CONTACTS

CHARTER COMMUNICATIONS (COMMUNICATION)
 FIELD CONTACT: RON FRASE
 600 CHITWOOD DRIVE
 WAUKESHA, WI 53186
 PHONE: 261-8309
 (920) 349-3202; MOBILE (608) 438-9648
 ron.frase@charter.com

BRANDON STORM
 2701 DANIELS ST.
 MADISON, WI 53718
 (608) 274-3822; MOBILE (608) 444-9493

LAKE MILLS LIGHT AND WATER DEPT (ELECTRICITY)
 FIELD CONTACT: KEVIN WILSON or AL MILLBRATH
 155 S. INDUSTRIAL DRIVE
 LAKE MILLS, WI 53551
 (920) 648-4026

LAKE MILLS WASTEWATER UTILITY (SANITARY)
 PAUL HERMANSON
 155 S. INDUSTRIAL DRIVE
 LAKE MILLS, WI 53551
 (920) 648-4026; MOBILE (920) 725-4684
 phermanson@ci.lake-mills.wi.us

SPRINT COMMUNICATIONS (COMMUNICATION)
 FIELD CONTACT: KENNETH M. NINE
 110 N. MAIN ST.
 CULVER, IN 46511
 (574) 842-5830; MOBILE (574) 904-6336
 Kennethnine@sprint.net

JAMES BURTON
 1901 N. ROSELLE RD.
 SCHUMBERG, IL 60195
 (800) 788-0751; MOBILE (708) 955-6659

WI DNR FISH HATCHERY (WATER)
 FIELD CONTACT: RON DAGGETT
 3911 FISH HATCHERY ROAD
 FITCHBURG, WI 53711
 (608) 275-3235
 Ronald.Daggett@wisconsin.gov
STEVE MERSON
 LAKE MILLS FISH HATCHERY
 (920) 648-3012
 Steve.Merson@wisconsin.gov

WI DNR LASON
 LAURA BUB
 3911 FISH HATCHERY ROAD
 FITCHBURG, WI 53711-5397
 (608) 275-3485
 Laura.bub@wisconsin.gov

DESIGN PROJECT MANAGER (WISDOT)
 BRANDAN HAGER
 2101 WRIGHT ST.
 MADISON, WI 53704
 (608) 245-2625
 Brandan.Hager@dot.wi.gov

FRONTIER COMMUNICATIONS OF WI LLC (COMMUNICATION)
 FIELD CONTACT: ED SIEBER
 1000 W. WISCONSIN ST.
 SUITE 100
 WAUKESHA, WI 53186
 (608) 837-1410; MOBILE (262) 325-7048
 Edward.o.sieber@ftr.com

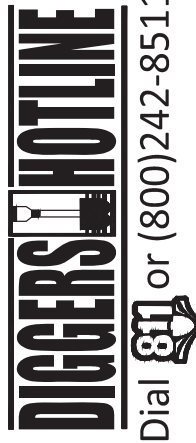
RUSS RYAN
 107 PLEASANT VIEW DR.
 PLYMOUTH, WI 53708
 (920) 893-7212; MOBILE (920) 737-9662

LAKE MILLS LIGHT AND WATER DEPT (WATER)
 PAUL HERMANSON
 155 S. INDUSTRIAL DRIVE
 LAKE MILLS, WI 53551
 (920) 648-4026; MOBILE (920) 725-4684
 phermanson@ci.lake-mills.wi.us

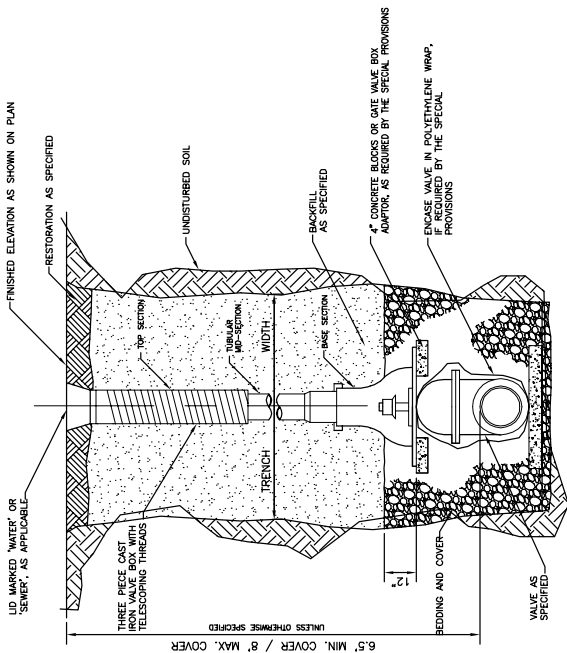
CITY OF LAKE MILLS (COMMUNICATION)
 PAUL HERMANSON
 155 S. INDUSTRIAL DRIVE
 LAKE MILLS, WI 53551
 (920) 648-4026; MOBILE (920) 725-4684
 phermanson@ci.lake-mills.wi.us

WE ENERGIES (GAS/PETROLEUM)
 FIELD CONTACT: JACOB SCHOENUNG
 500 S 116th ST.
 WEST ALLIS, WI 53024
 (262) 894-6705; MOBILE (414) 416-3365
 jacob.schoenung@we-energies.com

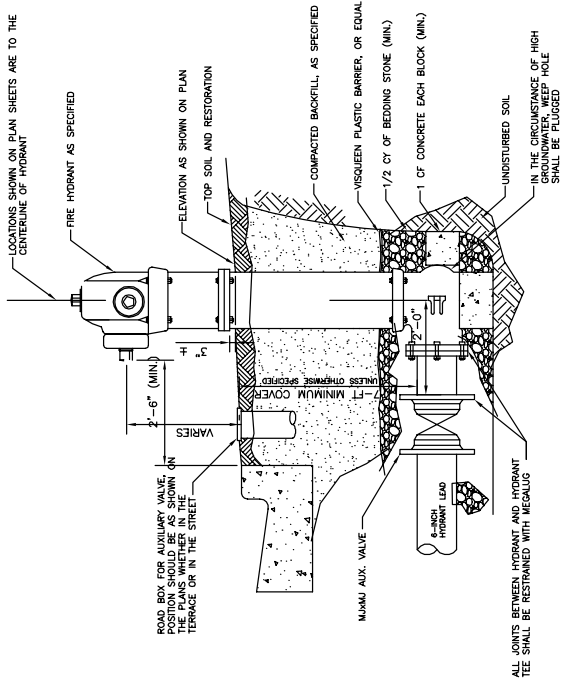
DAN SANDE
 301 W. EVERETT ST.
 A-208
 MILWAUKEE, WI 53203
 (414) 221-4578; MOBILE (414) 550-4993



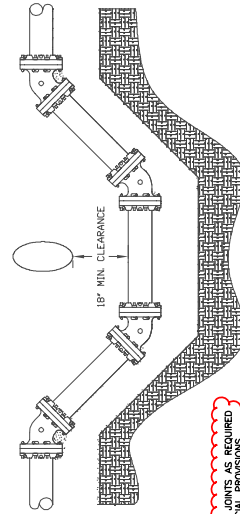
Dial 811 or (800) 242-8511
www.DiggersHotline.com



WATER MAIN GATE VALVE AND VALVE BOX



FIRE HYDRANT WITH AUXILIARY VALVE AND LEAD



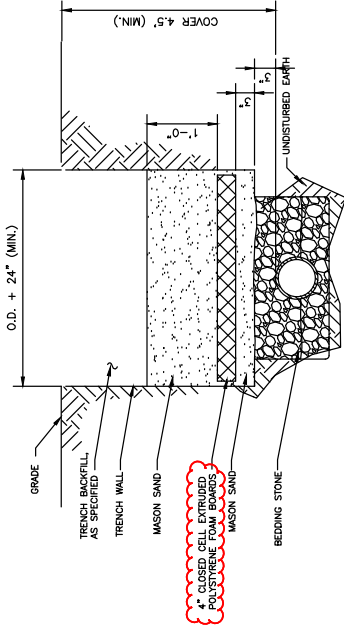
PROVIDE METALLIC FITTINGS AS NECESSARY TO OBTAIN 18\"/>

RESTRAIN JOINTS AS REQUIRED PER SPECIAL PROVISIONS

WATER MAIN OFFSET DETAIL
NO SCALE

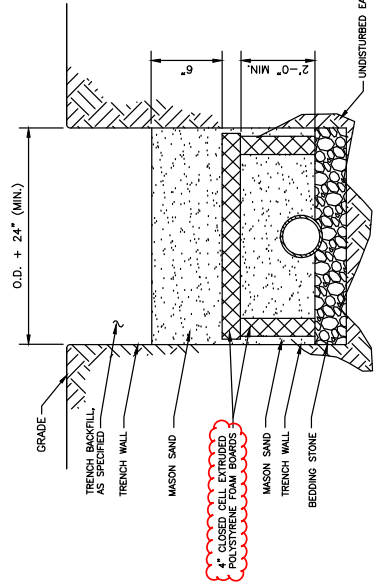
Addendum No. 01
ID 3300-01-73
Revised Sheet 88
February 26, 2018

Addendum No. 01
 ID 3300-01-73
 Revised Sheet 89
 February 26, 2018

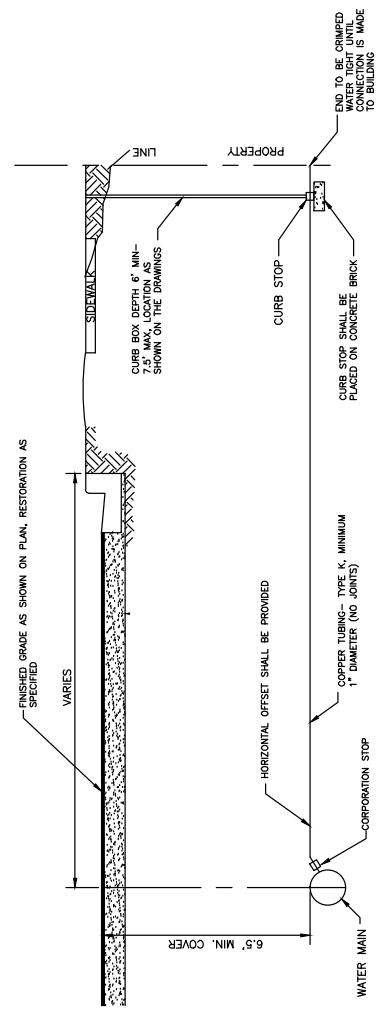


FULL WIDTH INSULATION

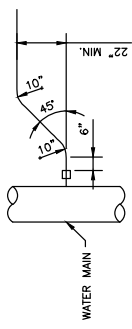
- NOTES:
1. INSULATION REQUIRED ON ALL PIPES HAVING LESS THAN 6'-0" OF COVER, AND NO PIPES SHALL BE INSTALLED WITH LESS THAN 5'-0" OF COVER
 2. INSULATION REQUIRED ON ALL WATER MAIN PIPES WITHIN 3 FT OF STORM SEWER



INVERTED U INSULATION



SECTION VIEW

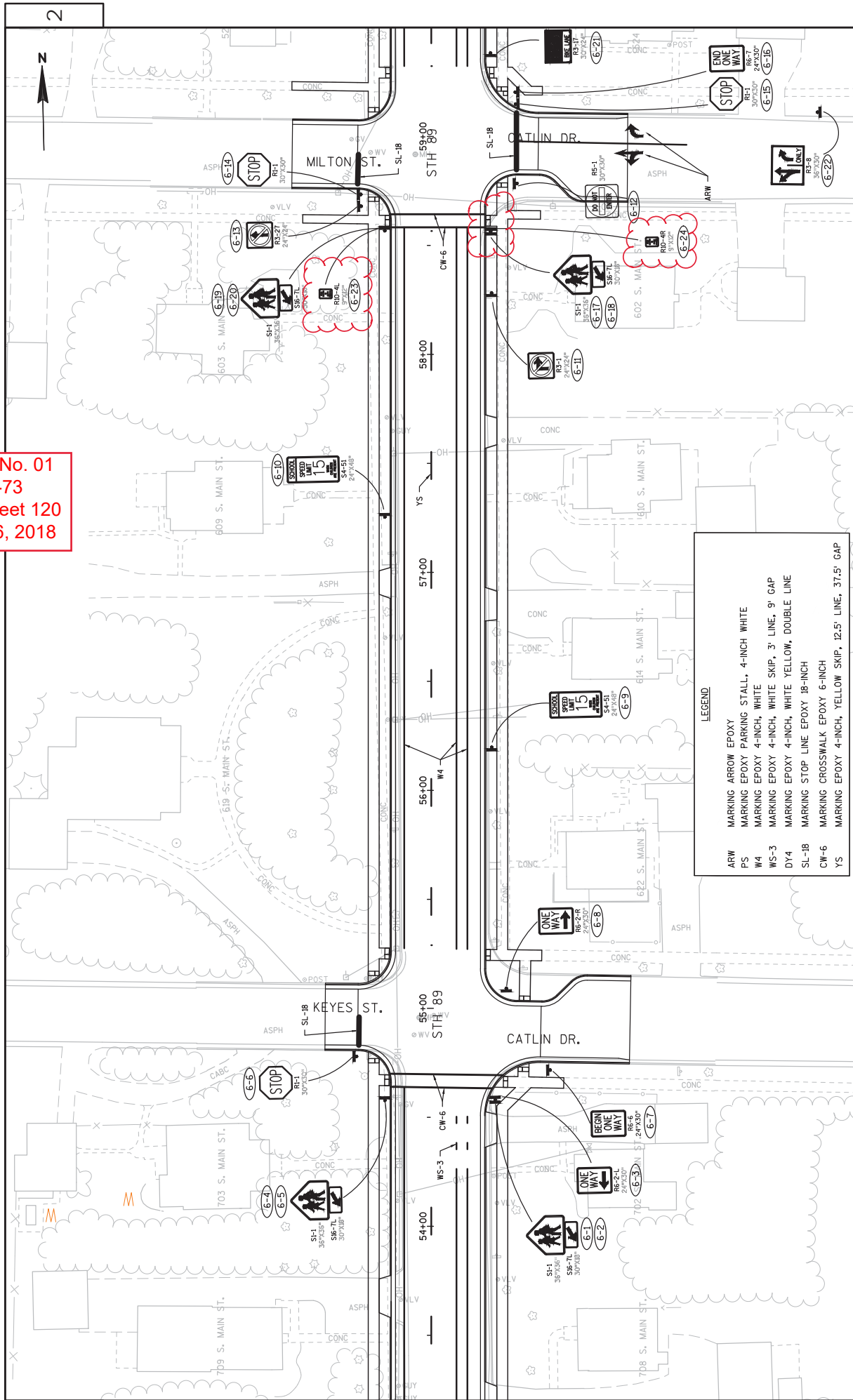


HORIZONTAL OFFSET PLAN VIEW

- NOTES
1. ALL FITTINGS SHALL BE FLARED OR COMPRESSION JOINT TYPE, AND CONFORM TO AWWA REQUIREMENTS
 2. CORPORATION STOP TO BE TAPPED INTO DUCTILE IRON WATER MAIN, UNLESS OTHERWISE SPECIFIED, AND TAPPED TO PVC WATER MAIN WITH A SADDLE
 3. ALL TAPS TO BE MADE UNDER PRESSURE WHEN APPLICABLE
 4. NO TAPS TO BE CLOSER THAN 18" APART ALONG MAIN
 5. ALL COPPER TUBE BENDS TO BE SMOOTH RADIUS, 10" MIN
 6. WATER SERVICE LATERAL TO BE TESTED ALONG WITH MAIN LINE UNLESS IT IS AN EXISTING SERVICE BEING RECONNECTED

WATER_SERVICE_COPPER

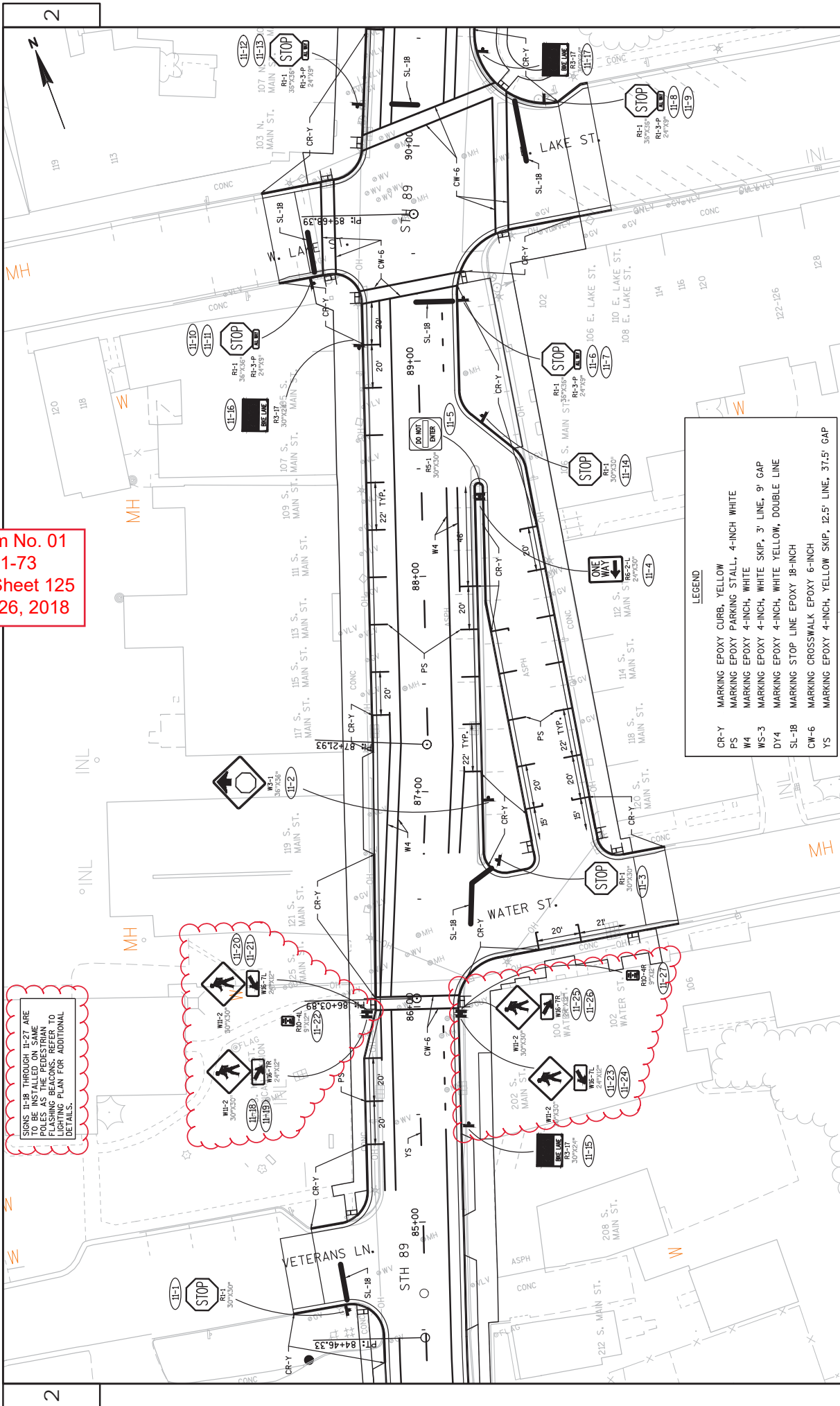
Addendum No. 01
 ID 3300-01-73
 Revised Sheet 120
 February 26, 2018



LEGEND

ARW	MARKING ARROW EPOXY
PS	MARKING EPOXY PARKING STALL, 4-INCH WHITE
W4	MARKING EPOXY 4-INCH, WHITE
WS-3	MARKING EPOXY 4-INCH, WHITE SKIP, 3' LINE, 9' GAP
DY4	MARKING EPOXY 4-INCH, WHITE SKIP, WHITE YELLOW, DOUBLE LINE
SL-18	MARKING STOP LINE EPOXY 18-INCH
CW-6	MARKING CROSSWALK EPOXY 6-INCH
YS	MARKING EPOXY 4-INCH, YELLOW SKIP, 12.5' LINE, 37.5' GAP

Addendum No. 01
 ID 3300-01-73
 Revised Sheet 125
 February 26, 2018



Signs II-21 through II-27 are to be installed on poles as the pedestrian flashing beacons. Refer to lighting plan for additional details.

LEGEND

CR-Y	MARKING EPOXY CURB, YELLOW
PS	MARKING EPOXY PARKING STALL, 4-INCH WHITE
W4	MARKING EPOXY 4-INCH, WHITE
WS-3	MARKING EPOXY 4-INCH, WHITE SKIP, 3' LINE, 9' GAP
DY4	MARKING EPOXY 4-INCH, WHITE YELLOW, DOUBLE LINE
SL-1B	MARKING STOP LINE EPOXY 18-INCH
CW-6	MARKING CROSSWALK EPOXY 6-INCH
YS	MARKING EPOXY 4-INCH, YELLOW SKIP, 12.5' LINE, 37.5' GAP

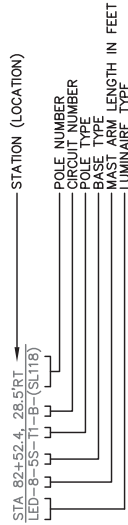
LIGHTING PLANS PREPARED BY:

DATE _____ SIGNATURE _____

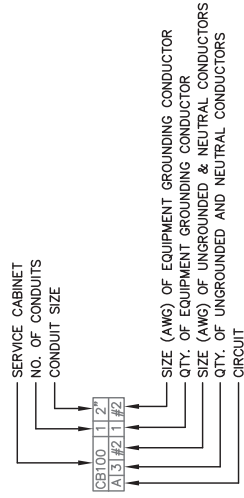
LEGEND:

- SINGLE ARM LIGHTING UNIT - TYPE 1 (DECORATIVE LIGHT POLE)
- ARMLESS LIGHTING UNIT - TYPE 2 (DECORATIVE LIGHT POLE)
- LIGHTING CONDUIT (2" SCHEDULE 40 PVC UNLESS NOTED)
- CONCRETE CONTROL CABINET BASE/ELECTRICAL SERVICE
- PULL BOX (24"x42" STEEL)
- POLE MOUNTED PEDESTRIAN ACTIVATED FLASHING BEACON W/ SIGNS (PAFB)
- PUSH BUTTON
- STOP SIGN WITH FLASHER

LIGHTING UNIT LEGEND



CONDUIT/CONDUCTOR LEGEND



ABBREVIATIONS:

PWO = PULL WIRE ONLY

NOTES:

- 1) WISCONSIN DOT ELECTRICAL UNIT SHALL APPROVE THE FINAL LOCATION FOR ALL CONCRETE BASES AND PULLBOXES IN THE FIELD PRIOR TO INSTALLATION. CONTACT THEM 3 DAYS IN ADVANCE.
- 2) PITCH ALL CONDUIT TOWARD PULLBOXES. A 2" DRAIN DUCT TO DITCH OR STORM SEWER REQUIRED FOR ALL PULLBOXES IN LOW POINTS. REFER TO THE MISCELLANEOUS QUANTITIES FOR LOCATIONS OF DRAIN DUCT.
- 3) THE LOCATION OF EXISTING AND PROPOSED UTILITIES AS SHOWN ON THE PLANS ARE APPROXIMATE. IN ADDITION, THERE MAY BE OTHER UTILITIES WITHIN THE PROJECT AREA WHICH ARE NOT SHOWN. THE CONTRACTOR SHALL VERIFY THE LOCATIONS OF ALL UTILITIES PRIOR TO CONSTRUCTION.
- 4) ALL POLES SHALL BE PLACED A MINIMUM OF 2-3 FEET FROM THE BACK OF CURB.
- 5) CABINET BASES AND THE PULLBOXES AND CONDUIT WITHIN THE AREA OF CABINET BASES SHALL BE INSTALLED PER FIELD CONDITIONS (WITH ENGINEER APPROVAL). VERIFY THE LOCATION OF ALL ELECTRICAL FACILITIES WITH THE ENGINEER PRIOR TO INSTALLING.
- 6) ALL STREET LIGHT CIRCUITS TO BE 120/240 SINGLE PHASE. STREET LIGHTS TO OPERATE AT 120 VOLTS. ALTERNATING PHASE CONDUCTORS FROM POLE TO POLE. CONTRACTOR TO BALANCE ELECTRICAL LOADS ON EACH FEEDER.
- 7) NO SPLICES ALLOWED IN PULLBOXES UNLESS NOTED OTHERWISE.
- 8) CONDUIT MUST BE PLACED PRIOR TO CURB AND GUTTER AND SIDEWALK CONSTRUCTION.
- 9) FLASHER ASSEMBLIES TO OPERATE AT 120 VOLTS.
- 10) FOR LAKE MILLS LIGHT AND WATER ASSISTANCE CONTACT MR. CHRIS EVENSON, LEAD FOREMAN, AT 920-648-4026.

Addendum No. 01
 ID 3300-01-73
 Revised Sheet 127
 February 26, 2018

Sheet 1 of 17

HIGHWAY LIGHTING
 STH 89 (N/S MAIN ST.)
 CITY OF LAKE MILLS
 JEFFERSON COUNTY

DESIGN: FORSTER ELECTRICAL ENGINEERING
 DATE: 2018-02-19
 REV: 3



LAKE MILLS LIGHT & WATER EXISTING SECONDARY PEDESTAL & WOOD POLE CONTACT LML&W AT (920) 848-4026 FOR ASSISTANCE IN INSTALLING THE CONDUIT FROM THE PEDESTAL TO THE PEDESTAL UTILITY TO PROVIDE AND INSTALL SERVICE CONDUCTORS.

(1) 2-INCH PVC FOR FUTURE UTILITY SERVICE CABLES TO PAFB1.

STA 58+56.8, 21.0'LT
PAFB ASSEMBLY CONCRETE BASE TYPE 1 PEDESTAL BASE TYPE 1 TRAFFIC SIGNAL STAND, ALUM. 13FT PEDESTRIAN PUSH BUTTON

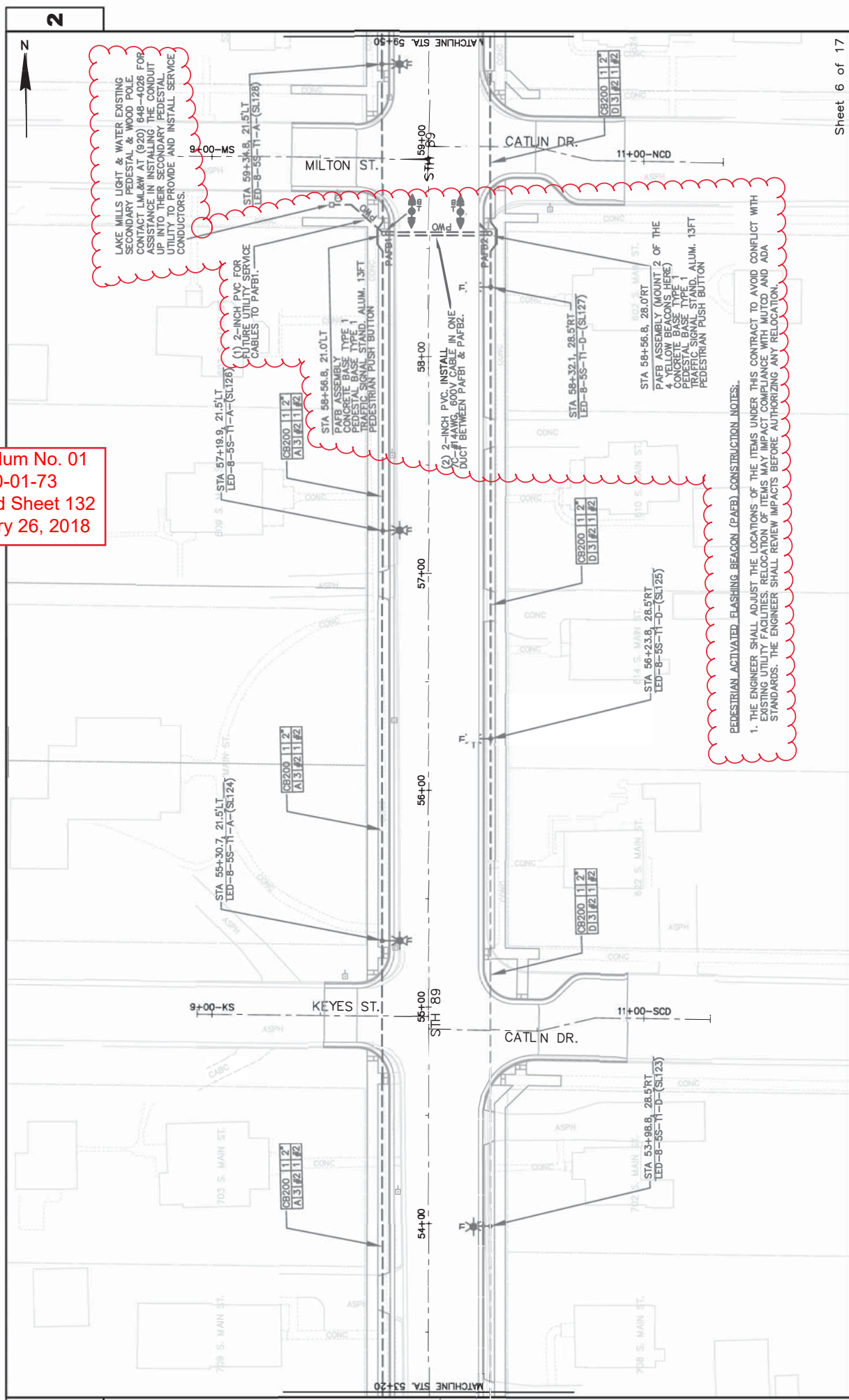
(2) 2-INCH PVC, INSTALL 600V CABLE IN ONE DUCT BETWEEN PAFB1 & PAFB2.

STA 56+56.8, 28.0'RT
PAFB ASSEMBLY (MOUNT 2 OF THE 4 YELLOW BEACONS HERE)
CONCRETE BASE TYPE 1 TRAFFIC SIGNAL STAND, ALUM. 13FT PEDESTRIAN PUSH BUTTON

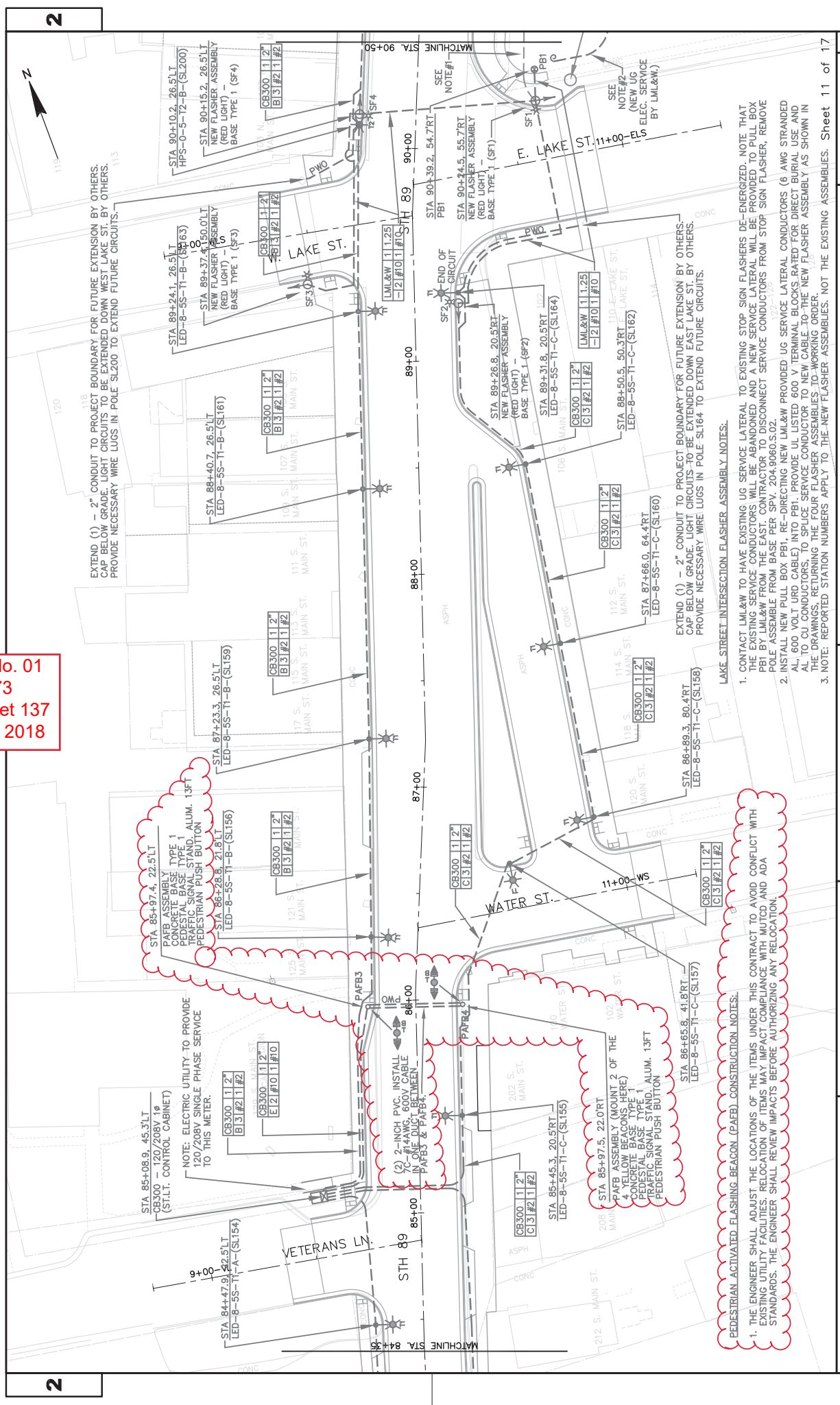
PEDESTRIAN ACTIVATED FLASHING BEACON (PAFB) CONSTRUCTION NOTES:

1. THE ENGINEER SHALL ADJUST THE LOCATIONS OF THE ITEMS UNDER THIS CONTRACT TO AVOID CONFLICT WITH EXISTING UTILITY FACILITIES. RELOCATION OF ITEMS MAY IMPACT PLACEMENT WITH TDD, AND ADA STANDARDS. THE ENGINEER SHALL REVIEW IMPACTS BEFORE AUTHORIZING ANY RELOCATION.

Addendum No. 01
ID 3300-01-73
Revised Sheet 132
February 26, 2018



Addendum No. 01
 ID 3300-01-73
 Revised Sheet 137
 February 26, 2018



EXTEND (1) - 2" CONDUIT TO PROJECT BOUNDARY FOR FUTURE EXTENSION BY OTHERS. CAP BELOW GRADE. LIGHT CIRCUITS TO BE EXTENDED DOWN WEST LAKE ST. BY OTHERS. PROVIDE NECESSARY WIRE LUGS IN POLE SL200 TO EXTEND FUTURE CIRCUITS.

EXTEND (1) - 2" CONDUIT TO PROJECT BOUNDARY FOR FUTURE EXTENSION BY OTHERS. CAP BELOW GRADE. LIGHT CIRCUITS TO BE EXTENDED DOWN EAST LAKE ST. BY OTHERS. PROVIDE NECESSARY WIRE LUGS IN POLE SL164 TO EXTEND FUTURE CIRCUITS.

LAKE STREET INTERSECTION FLASHER ASSEMBLY NOTES:

- CONTACT LML&W TO HAVE EXISTING UG SERVICE LATERAL TO EXISTING STOP SIGN FLASHERS DE-ENERGIZED. NOTE THAT THE EXISTING SERVICE CONDUCTORS WILL BE ABANDONED AND A NEW SERVICE LATERAL WILL BE PROVIDED TO PULL BOX PBI BY LML&W FROM THE EAST. CONTRACTOR TO DISCONNECT SERVICE CONDUCTORS FROM STOP SIGN FLASHER. REMOVE POLE ASSEMBLY FROM BASE PER SITE: 204-9060.502.
- INSTALL NEW PULL BOX PBI, RE-DIRECTING NEW LML&W PROVIDED UG SERVICE LATERAL CONDUCTORS (6 AWG STRANDED ALUMINUM) TO PBI. RE-DIRECTING EXISTING UG SERVICE CONDUCTORS TO NEW PBI. REMOVE EXISTING PBI AND ALL TO CU CONDUCTORS TO STOP SIGN FLASHER ASSEMBLY. THE NEW FLASHER ASSEMBLY (AS SHOWN IN THE DRAWINGS) RETURNING THE FOUR FLASHER ASSEMBLIES TO WORKING ORDER.
- NOTE: REPORTED STATION NUMBERS APPLY TO THE NEW FLASHER ASSEMBLIES. NOT THE EXISTING ASSEMBLIES. Sheet 11 of 17

STA 85+97.4, 22.5LT
 PAFB ASSEMBLY
 CONCRETE BASE TYPE 1
 PEDESTRIAN SIGNAL STAND, ALUM. 13FT
 PEDESTRIAN PUSH BUTTON
 LED-8-55-TI-B-(SL156)

STA 85+97.5, 22.0RT
 PAFB ASSEMBLY (MOUNT 2 OF THE 4 YELLOW BEACONS HERE)
 CONCRETE BASE TYPE 1
 PEDESTRIAN SIGNAL STAND, ALUM. 13FT
 PEDESTRIAN PUSH BUTTON
 LED-8-55-TI-C-(SL155)

PEDESTRIAN ACTIVATED FLASHING BEACON (PAFB) CONSTRUCTION NOTES:
 1. THE ENGINEER SHALL ADJUST THE LOCATIONS OF THE ITEMS UNDER THIS CONTRACT TO AVOID CONFLICT WITH EXISTING UTILITY FACILITIES. RELOCATION OF ITEMS MAY IMPACT COMPLIANCE WITH MUTCD AND ADA STANDARDS. THE ENGINEER SHALL REVIEW IMPACTS BEFORE AUTHORIZING ANY RELOCATION.

RESTORATION ITEMS

CATEGORY	STATION	TO	STATION	LOCATION	SY	CLASS	SY	CLASS	SY	CMT	SEEDING MIXTURE NO.	LB	SEEDING LB	TEMPORARY	REMARKS
STAGE 1															
0010	89+83	-	95+41	STH 89 - RT	-	691	-	-	-	-	-	-	-	-	E LAKE ST TO MADISON ST
0010	86+34	-	89+83	STH 89 - RT	-	160	-	-	-	-	-	-	-	-	WATER ST TO E LAKE ST
0010	84+87	-	89+88	STH 89 - LT	-	97	-	-	-	-	-	-	-	-	VETERANS LN TO W LAKE ST
0010	84+40	-	86+34	STH 89 - RT	22	20	0.01	0.01	0.4	0.4	-	-	-	-	S. STAGE 1 LIMITS TO WATER ST
0010	84+40	-	84+87	STH 89 - LT	22	45	0.01	0.01	0.4	0.4	-	-	-	-	S. STAGE 1 LIMITS TO VETERANS LN
STAGE 2															
0010	62+88	-	84+40	STH 89 - RT	2,410	3,824	-	1.52	43.4	43.4	-	-	-	-	E LAKE PARK PL TO N. STAGE 2 LIMITS
0010	68+37	-	84+40	STH 89 - LT	1,795	3,066	-	1.13	32.3	32.3	-	-	-	-	PHILLIPS LN TO N. STAGE 2 LIMITS
0010	62+88	-	68+37	STH 89 - LT	615	944	-	0.39	11.1	11.1	-	-	-	-	W LAKE PARK PL TO PHILLIPS LN
STAGE 3															
0010	58+97	-	62+88	STH 89 - RT	438	651	-	0.28	7.9	7.9	-	-	-	-	N. CATLIN DR TO E LAKE PARK PL
0010	58+91	-	62+88	STH 89 - LT	445	813	-	0.28	8.0	8.0	-	-	-	-	MILTON ST TO W LAKE PARK PL
0010	54+90	-	58+97	STH 89 - RT	456	687	-	0.29	8.2	8.2	-	-	-	-	S. CATLIN DR TO N. CATLIN DR
0010	54+95	-	58+91	STH 89 - LT	444	605	-	0.28	8.0	8.0	-	-	-	-	KEYES ST TO MILTON ST
0010	44+36	-	54+95	STH 89 - LT	1,186	1,601	-	0.75	21.3	21.3	-	-	-	-	WOODLAND BEACH RD TO KEYES ST
0010	44+00	-	54+90	STH 89 - RT	1,221	2,049	-	0.77	22.0	22.0	-	-	-	-	S. STAGE 3 LIMITS TO S. CATLIN DR
0010	44+00	-	44+36	STH 89 - LT	40	48	-	0.03	0.7	0.7	-	-	-	-	S. STAGE 3 LIMITS TO WOODLAND BEACH RD
STAGE 4															
0010	40+18	-	44+00	STH 89 - RT	428	1,432	-	0.27	7.7	7.7	-	-	-	-	PINNACLE DR TO N. STAGE 4 LIMITS
0010	38+17	-	44+00	STH 89 - LT	653	968	-	0.41	11.8	11.8	-	-	-	-	COLUMBUS ST TO N. STAGE 4 LIMITS
0010	29+50	-	40+18	STH 89 - RT	1,196	2,298	-	0.75	21.5	21.5	-	-	-	-	S. STAGE 4 LIMITS TO PINNACLE DR
0010	34+77	-	38+17	STH 89 - LT	381	450	-	0.24	6.9	6.9	-	-	-	-	SANDY BEACH RD TO COLUMBUS ST
0010	31+72	-	34+77	STH 89 - LT	342	1,014	-	0.22	6.1	6.1	-	-	-	-	CTHA TO SANDY BEACH RD
0010	29+50	-	31+72	STH 89 - LT	249	395	-	0.16	4.5	4.5	-	-	-	-	S. STAGE 4 LIMITS TO CTHA
0010	8+32 SBR	-	10+00 SBR	SANDY BEACH RD	470	-	-	-	-	-	-	-	28.8	-	SANDY BEACH RD TEMPORARY ACCESS
TOTAL 0010					12,813	21,858	125	7.79	222.2	28.8					

EROSION CONTROL ITEMS

CATEGORY	STATION	TO	STATION	LOCATION	SY	CLASS	SY	CLASS	SY	CMT	STATION	TO	STATION	LOCATION	PROJECT	REMARKS
EROSION CONTROL																
0010	84+40	-	95+41	STH 89	-	-	-	-	-	-	95+41	-	95+41	PROJECT	10	MOBILIZATION EROSION CONTROL
0010	62+88	-	84+40	STH 89	492	492	-	-	-	-	-	-	-	-	-	628,1905 MOBILIZATIONS
0010	44+00	-	62+88	STH 89	211	211	-	-	-	-	-	-	-	-	-	628,1910 MOBILIZATIONS
0010	29+50	-	44+00	STH 89	1,187	1,187	-	-	-	-	-	-	-	-	-	EROSION CONTROL
0010	8+25 A	-	8+75 A	CTHA	-	-	-	-	-	-	-	-	-	-	-	EMERGENCY EROSION CONTROL
TOTAL 0010					1,890	1,890	3									

Addendum No. 01
 ID 3300-01-73
 Revised Sheet 190
 February 26, 2018

Addendum No. 01
 ID 3300-01-73
 Revised Sheet 194
 February 26, 2018

PERMANENT SIGNING CONT.

CATEGORY	SIGN NO.	SIGN CODE	SIGN SIZE	MESSAGE	634.0814		634.0616		634.0810		634.0811		634.0812		634.0814		637.2210	637.2230	REMARKS	
					WOOD	POSTS	WOOD	POSTS	TUBULAR	POSTS	TUBULAR	TUBULAR	STEEL	POSTS	TUBULAR	STEEL				POSTS
0010	11-5	R5-1	30 X 30	DO NOT ENTER	-	-	-	-	-	-	-	-	-	-	-	-	6.25	-	ON SAME POST AS 11-4, OPPOSITE SIDE	
0010	11-6	R1-1	36 X 36	STOP	-	-	-	-	-	-	-	-	-	-	-	-	7.46	-	ON FLASHING BEACON	
0010	11-7	R1-3P	24 X 9	ALL WAY	-	-	-	-	-	-	-	-	-	-	-	-	1.5	-	ON SAME FLASHING BEACON AS 11-6	
0010	11-8	R1-1	36 X 36	STOP	-	-	-	-	-	-	-	-	-	-	-	-	7.46	-	ON FLASHING BEACON	
0010	11-9	R1-3P	24 X 9	ALL WAY	-	-	-	-	-	-	-	-	-	-	-	-	1.5	-	ON SAME FLASHING BEACON AS 11-8	
0010	11-10	R1-1	36 X 36	STOP	-	-	-	-	-	-	-	-	-	-	-	-	7.46	-	ON FLASHING BEACON	
0010	11-11	R1-3P	24 X 9	ALL WAY	-	-	-	-	-	-	-	-	-	-	-	-	1.5	-	ON SAME FLASHING BEACON AS 11-10	
0010	11-12	R1-1	36 X 36	STOP	-	-	-	-	-	-	-	-	-	-	-	-	7.46	-	ON FLASHING BEACON	
0010	11-13	R1-3P	24 X 9	ALL WAY	-	-	-	-	-	-	-	-	-	-	-	-	1.5	-	ON SAME FLASHING BEACON AS 11-12	
0010	11-14	R1-1	30 X 30	STOP	-	-	-	-	-	-	-	-	-	-	-	-	5.18	-	-	
0010	11-15	R3-17	30 X 24	BKE LANE	-	-	-	-	-	-	-	-	-	-	-	-	5	-	-	
0010	11-16	R3-17	30 X 24	BKE LANE	-	-	-	-	-	-	-	-	-	-	-	-	5	-	-	
0010	11-17	R3-17	30 X 24	BKE LANE	-	-	-	-	-	-	-	-	-	-	-	-	5	-	-	
0010	11-18	W11-2	30 X 30	"PEDESTRIAN" SYMBOL	-	-	-	-	-	-	-	-	-	-	-	-	6.25	-	ON FLASHING BEACON POLE	
0010	11-19	W16-7R	24 X 12	"TLT DOWN RIGHT ARROW" SYMBOL	-	-	-	-	-	-	-	-	-	-	-	-	2	-	ON SAME POST AS 11-18	
0010	11-20	W11-2	30 X 30	"PEDESTRIAN" SYMBOL	-	-	-	-	-	-	-	-	-	-	-	-	6.25	-	ON SAME POST AS 11-18	
0010	11-21	W16-7L	24 X 12	"TLT DOWN LEFT ARROW" SYMBOL	-	-	-	-	-	-	-	-	-	-	-	-	2	-	ON SAME POST AS 11-18	
0010	11-22	R10-4L	9 X 12	PUSH BUTTON TO CROSS W/ LEFT ARROW	-	-	-	-	-	-	-	-	-	-	-	-	0.75	-	ON SAME POST AS 11-18	
0010	11-23	W11-2	30 X 30	"PEDESTRIAN" SYMBOL	-	-	-	-	-	-	-	-	-	-	-	-	6.25	-	ON FLASHING BEACON POLE	
0010	11-24	W16-7L	24 X 12	"TLT DOWN LEFT ARROW" SYMBOL	-	-	-	-	-	-	-	-	-	-	-	-	2	-	ON SAME POST AS 11-23	
0010	11-25	W11-2	30 X 30	"PEDESTRIAN" SYMBOL	-	-	-	-	-	-	-	-	-	-	-	-	6.25	-	ON SAME POST AS 11-23	
0010	11-26	W16-7R	24 X 12	"TLT DOWN RIGHT ARROW" SYMBOL	-	-	-	-	-	-	-	-	-	-	-	-	2	-	ON SAME POST AS 11-23	
0010	11-27	R10-4R	9 X 12	PUSH BUTTON TO CROSS W/ RIGHT ARROW	-	-	-	-	-	-	-	-	-	-	-	-	0.75	-	ON SAME POST AS 11-23	
0010	12-1	J11-1	24 X 36	CNTY. B	-	-	-	-	-	-	-	-	-	-	-	-	6.5	-	-	
0010	12-2	R2-1	24 X 30	SPEED LIMIT 25	-	-	-	-	-	-	-	-	-	-	-	-	5	-	-	
0010	12-3	J12-1	24 X 45	COUNTY A, "RIGHT ARROW" SYMBOL	-	-	-	-	-	-	-	-	-	-	-	-	7.5	-	-	
0010	12-4	R2-1	24 X 30	SPEED LIMIT 25	-	-	-	-	-	-	-	-	-	-	-	-	5	-	-	
0010	12-5	J13-2	48 X 45	COUNTY B, "DOUBLE A ROW" SYMBOL, COUNTY A, "RIGHT ARROW" SYMBOL	-	-	-	-	-	-	-	-	-	-	-	-	15	-	-	
0010	12-6	JV	24 X 48	COUNTY A, COUNTY G	-	-	-	-	-	-	-	-	-	-	-	-	8	-	-	
0010	12-7	R1-1	36 X 36	STOP	-	-	-	-	-	-	-	-	-	-	-	-	7.46	-	-	
0010	12-8	JV	24 X 72	ALTERNATE 94, SOUTH 89	-	-	-	-	-	-	-	-	-	-	-	-	12	-	-	
0010	12-9	R1-1	36 X 36	STOP	-	-	-	-	-	-	-	-	-	-	-	-	7.46	-	ON FLASHING BEACON	
0010	12-10	R1-3P	24 X 9	ALL WAY	-	-	-	-	-	-	-	-	-	-	-	-	1.5	-	ON SAME FLASHING BEACON AS 12-9	
0010	12-11	D1-4	90 X 48	"UP ARROW" SYMBOL, GLACIAL DRUMLIN STATE TRAIL, "LEFT ARROW" SYMBOL, AZTALAN STATE PARK	-	-	-	-	-	-	-	-	-	-	-	-	30	-	-	
0010	12-12	R1-1	36 X 36	STOP	-	-	-	-	-	-	-	-	-	-	-	-	7.46	-	ON FLASHING BEACON	
0010	12-13	R1-3P	24 X 9	ALL WAY	-	-	-	-	-	-	-	-	-	-	-	-	1.5	-	ON SAME FLASHING BEACON AS 12-12	
0010	12-14	J13-2	48 X 45	COUNTY A, "AHEAD AND LEFT ARROW" SYMBOL, COUNTY B, "DOUBLE A ROW" SYMBOL	-	-	-	-	-	-	-	-	-	-	-	-	15	-	ON FLASHING BEACON	
0010	12-15	R1-1	36 X 36	STOP	-	-	-	-	-	-	-	-	-	-	-	-	7.46	-	ON FLASHING BEACON	
0010	12-16	R1-3P	24 X 9	ALL WAY	-	-	-	-	-	-	-	-	-	-	-	-	1.5	-	ON SAME FLASHING BEACON AS 12-15	
0010	12-17	R1-1	36 X 36	STOP	-	-	-	-	-	-	-	-	-	-	-	-	7.46	-	ON FLASHING BEACON	
0010	12-18	R1-3P	24 X 9	ALL WAY	-	-	-	-	-	-	-	-	-	-	-	-	1.5	-	ON SAME FLASHING BEACON AS 12-17	
0010	12-19	R3-17	30 X 24	BKE LANE	-	-	-	-	-	-	-	-	-	-	-	-	5	-	-	
0010	12-20	R3-17-B	30 X 12	"FENDS"	-	-	-	-	-	-	-	-	-	-	-	-	2.5	-	-	
0010	12-21	R3-17	30 X 24	BKE LANE	-	-	-	-	-	-	-	-	-	-	-	-	5	-	-	
0010	12-22	R3-17	30 X 24	BKE LANE	-	-	-	-	-	-	-	-	-	-	-	-	5	-	-	
0010	12-23	R3-17-A	30 X 12	"AHEAD"	-	-	-	-	-	-	-	-	-	-	-	-	2.5	-	-	
SUBTOTAL 0010					0	3	1	13	2	49	10	2	5	8	1	231.07	33	-	-	
TOTAL 0010					3	18	13	2	49	10	2	5	8	1	659.56	180.00	-	-	-	-

State Project No. 3300-01-73

LIGHTING CONDUIT AND WIRE

FROM	TO	652.0225 * CONDUIT RIGID NONMETALLIC SCH 40 2-INCH LF	655.0635 * ELECTRICAL WIRE LIGHTING 2 AWG LF	REMARKS
ALL ITEMS ARE CATEGORY 0020				
SL 101	-	SL 102	399	
SL 102	-	SL 104	404	
SL 104	-	CB 100	616	
SL 99	-	SL 100	424	
SL 100	-	SL 103	572	
CB 100	-	SL 105	500	
CB 100	-	CB 100	504	
CB 100	-	SL 105	31	
SL 105	-	SL 108	680	
SL 108	-	SL 110	438	
SL 110	-	SL 112	1136	
SL 112	-	SL 114	520	
SL 114	-	SL 116	520	
SL 116	-	SL 118	696	
CB 100	-	SL 107	728	
SL 107	-	SL 109	246	
SL 109	-	SL 111	117	
SL 111	-	SL 113	496	
SL 113	-	SL 115	824	
SL 115	-	SL 117	205	
SL 117	-	SL 119	548	
SL 119	-	SL 121	558	
SL 121	-	SL 122	285	
SL 122	-	SL 124	816	
SL 124	-	SL 126	292	
SL 126	-	SL 128	189	
SL 128	-	SL 130	215	
SL 130	-	CB 200	824	
SL 130	-	CB 200	876	
SL 121	-	SL 123	798	
SL 123	-	SL 125	259	
SL 125	-	SL 127	825	
SL 127	-	SL 129	860	
SL 129	-	SL 131	838	
SL 131	-	CB 200	216	
SL 131	-	CB 200	44	
CB 200	-	SL 132	620	
SL 132	-	SL 134	144	
SL 134	-	SL 136	804	
SL 136	-	SL 138	504	
SL 138	-	SL 140	524	
SL 140	-	SL 142	636	
CB 200	-	SL 133	196	
SL 133	-	SL 135	828	
SL 135	-	SL 137	784	
SL 137	-	SL 139	840	
SL 139	-	SL 141	740	
SL 141	-	SL 143	852	
SL 143	-	SL 145	591	
SL 145	-	SL 147	621	
SL 147	-	SL 149	200	
SL 149	-	SL 151	539	
SL 151	-	SL 153	780	
SL 153	-	CB 300	768	
SL 153	-	CB 300	744	
SL 153	-	CB 300	356	
SL 145	-	SL 147	816	
SL 147	-	SL 149	516	
SL 149	-	SL 151	776	
SL 151	-	SL 153	720	
SL 153	-	CB 300	888	
SL 153	-	CB 300	211	
SUB-TOTALS			10300	41088

Refer to separate material list for PAFB conduit/full box system also in this vicinity.

Refer to separate material list for PAFB conduit/full box system also in this vicinity.

State Project No. 3300-01-73

LIGHTING CONDUIT AND WIRE

FROM	TO	652.0225 * CONDUIT RIGID NONMETALLIC SCH 40 2-INCH LF	655.0635 * ELECTRICAL WIRE LIGHTING 2 AWG LF	REMARKS
ALL ITEMS ARE CATEGORY 0020				
CB 300	-	SL 156	135	
SL 156	-	SL 159	93	
SL 159	-	SL 161	117	
SL 161	-	SL 163	83	
SL 163	-	SL 200	88	
SL 200	-	SL 201	376	
SL 201	-	SL 202	72	
SL 202	-	SL 203	76	
SL 203	-	SL 204	300	
SL 204	-	SL 205	328	
SL 205	-	SL 206	68	
SL 206	-	SL 207	259	
SL 200	-	Proj. Boundary	41	
CB 300	-	SL 155	96	
SL 155	-	SL 157	123	
SL 157	-	SL 158	45	
SL 158	-	SL 160	83	
SL 160	-	SL 162	86	
SL 162	-	SL 164	93	
SL 164	-	Proj. Boundary	68	
SUB-TOTALS			1678	6722

Refer to separate material list for PAFB conduit/full box system also in this vicinity.

Cap conduit below grade. To be extended down W. Lake St. by other.

Refer to separate material list for PAFB conduit/full box system also in this vicinity.

Cap conduit below grade. To be extended down E. Lake St. by other.

State Project No. 3300-01-73

LIGHTING CONTROL

CABINET NUMBER	STATION	OFFSET	R/L	654.0230 CONCRETE CONTROL CABINET BASES TYPE L30 EACH	656.0400.01 ELECTRICAL SERVICE MAN LUGS ONLY METER PEDESTAL EACH	656.0400.02 ELECTRICAL SERVICE MAN LUGS ONLY METER PEDESTAL EACH	656.0400.03 ELECTRICAL SERVICE MAN LUGS ONLY METER PEDESTAL EACH	REMARKS
CB 100	34+06.8	39.0'	LT	1	1	1	1	
CB 200	62+63.4	63.5'	RT	1	1	1	1	
CB 300	85+08.9	45.3'	LT	1	1	1	1	
ALL ITEMS ARE CATEGORY 0020								
SUB-TOTALS				3	3	3	3	

Service voltage to be 120/240V single phase
Service voltage to be 200/240V single phase
Provide 5th meter. Jaw at 6 o'clock position. Snap on Jaw is not acceptable. Include P-20 breaker in panelboard for PAFB circuit.

Addendum No. 01
ID 3300-01-73
Revised Sheet 202
February 26, 2018

Sheet 16 of 17

HIGHWAY LIGHTING
STH 89 (N/S MAIN ST.)
CITY OF LAKE MILLS
JEFFERSON COUNTY

DESIGN: FORSTER ELECTRICAL ENGINEERING
DATE: 2018-02-19
REV: 3

**Addendum No. 01
ID 3300-01-73
Revised Sheet 203
February 26, 2018**

3

3

State Project No. 3300-01-73

LIGHTING CONDUIT AND WIRE

FROM	TO	LF	LF	REMARKS
652.0215	CONDUIT RIGID	655.0815	655.0240	
1.14-INCH	NONMETALLIC SCH-40	WIRE LIGHTING	CABLE TRAFFIC	
	2-INCH	10-AWG	SIGNAL	
		7-14-AWG		

State Project No. 3300-01-73

ALL ITEMS ARE CATEGORY 0030

UTILITY	PAFB 1	PAFB 2	PAFB 3	PAFB 4	REMARKS
Milken Street and Main	32	100	100	92	
Water Street and Main	100	345	65	65	
Lake Street and Main (Standard Flasher Assembly)	15	78	423	288	
Malden Street and Main (Standard Flasher Assembly)	85	444	168	130	
SUB-TOTALS	465	2094	485	130	

* ADDITIONAL QUANTITIES LISTED ELSEWHERE

State Project No. 3300-01-73

BASES, POLES AND ARMS

POLE NUMBER	STATION	OFFSET	LOCATION	REMARKS
PAFB 1	584-568	21'	LT	
PAFB 2	584-568	28'	RT	
PAFB 3	85-974	22.9	LT	
PAFB 4	85-975	22'	RT	
SUB-TOTALS	4	4	4	2

* ADDITIONAL QUANTITIES LISTED ELSEWHERE

State Project No. 3300-01-73

BASES, POLES AND ARMS

POLE NUMBER	STATION	OFFSET	LOCATION	REMARKS
SF 1	80-245	55.7'	RT	
SF 2	89-268	20.5'	RT	
SF 3	89-374	50.0'	LT	
SF 4	90-152	25.5'	LT	
SF 5	95-455	20.7'	RT	
TOTALS	5	4	4	4

* ADDITIONAL QUANTITIES LISTED ELSEWHERE

State Project No. 3300-01-73

PULL BOXES

PULL BOX NUMBER	STATION	OFFSET	RL	REMARKS
PB 1	89-382	54.7'	RT	
PB 2	95-157	52.8'	RT	
PB 3	(Existing Pull Box)			
SHEET TOTALS	3			

ALL ITEMS ARE CATEGORY 0030

653.0140
PULL BOXES STEEL
24x42-INCH

State Project No. 3300-01-73

BASES, POLES AND ARMS

POLE NUMBER	STATION	OFFSET	LOCATION	REMARKS
SF 1	80-245	55.7'	RT	
SF 2	89-268	20.5'	RT	
SF 3	89-374	50.0'	LT	
SF 4	90-152	25.5'	LT	
SF 5	95-455	20.7'	RT	
TOTALS	5	4	4	4

* ADDITIONAL QUANTITIES LISTED ELSEWHERE

Note: The reported station applies to the new assembly, not the existing assembly. Provide and install new Standard Flasher pole assembly, with pedestal base, 11 foot tall pole, and single 8 inch diameter LED signal light to be mounted at top of pole using single slip/riser offset-serialized mounting assembly, omitting pole cap. Refer to SDD 8-E-7.5 for more information. All flash electronics, mounting hardware and cable terminations required to complete the installation are considered incidental to the bid items.

Note: The reported station applies to the new assembly, not the existing assembly. Provide and install new Standard Flasher pole assembly, with pedestal base, 11 foot tall pole, and single 8 inch diameter LED signal light to be mounted at top of pole using single slip/riser offset-serialized mounting assembly, omitting pole cap. Refer to SDD 8-E-7.5 for more information. All flash electronics, mounting hardware and cable terminations required to complete the installation are considered incidental to the bid items.

Note: The reported station applies to the new assembly, not the existing assembly. Provide and install new Standard Flasher pole assembly, with pedestal base, 11 foot tall pole, and single 8 inch diameter LED signal light to be mounted at top of pole using single slip/riser offset-serialized mounting assembly, omitting pole cap. Refer to SDD 8-E-7.5 for more information. All flash electronics, mounting hardware and cable terminations required to complete the installation are considered incidental to the bid items.

Note: The reported station applies to the new assembly, not the existing assembly. Provide and install new Standard Flasher pole assembly, with pedestal base, 11 foot tall pole, and single 8 inch diameter LED signal light to be mounted at top of pole using single slip/riser offset-serialized mounting assembly, omitting pole cap. Refer to SDD 8-E-7.5 for more information. All flash electronics, mounting hardware and cable terminations required to complete the installation are considered incidental to the bid items.

Note: The reported station applies to the new assembly, not the existing assembly. Contractor to remove existing Standard Flasher pole assembly and store for installation. Re-install Stop Sign pole assembly on new concrete base. Retain existing internal wiring and flash/electronics.

Note: Two of the four yellow flashing beacons are to be installed on this pole. Refer to project signing sheets for signs to be attached to this pole. Refer to project signing sheets for signs to be attached to this pole. Refer to project signing sheets for signs to be attached to this pole. Note: Two of the four yellow flashing beacons are to be installed on this pole. Refer to project signing sheets for signs to be attached to this pole. Note: Two of the four yellow flashing beacons are to be installed on this pole. Refer to project signing sheets for signs to be attached to this pole.

Note: Two of the four yellow flashing beacons are to be installed on this pole. Refer to project signing sheets for signs to be attached to this pole. Note: Two of the four yellow flashing beacons are to be installed on this pole. Refer to project signing sheets for signs to be attached to this pole.

Note: Two of the four yellow flashing beacons are to be installed on this pole. Refer to project signing sheets for signs to be attached to this pole. Note: Two of the four yellow flashing beacons are to be installed on this pole. Refer to project signing sheets for signs to be attached to this pole.

Note: Two of the four yellow flashing beacons are to be installed on this pole. Refer to project signing sheets for signs to be attached to this pole. Note: Two of the four yellow flashing beacons are to be installed on this pole. Refer to project signing sheets for signs to be attached to this pole.

Note: Two of the four yellow flashing beacons are to be installed on this pole. Refer to project signing sheets for signs to be attached to this pole. Note: Two of the four yellow flashing beacons are to be installed on this pole. Refer to project signing sheets for signs to be attached to this pole.

Sheet 17 of 17

HIGHWAY LIGHTING
STH 89 (N/S MAIN ST.)
CITY OF LAKE MILLS
JEFFERSON COUNTY

DESIGN: FORSTER ELECTRICAL ENGINEERING
DATE: 2018-02-19

REVISIONS: REV: 2

PROJECT NO: 3300-01-73

COUNTY: JEFFERSON

HWY: STH 89

LIGHTING PLAN - QUANTITIES

SHEET 203

WISDOT/CADD SHEET 42

FILE NAME: D:\NABUTZ CURRENT WORK\3 LAKE MILLS PROJECTS\3-15D LAKE MILLS LIGHTING\3-15D-WD01-3300-01-73-003.DWG PLOT DATE: 2/20/2018 PLOT BY: FORSTER ENGINEERING PLOT NAME: LIGHTING PLAN - QUANTITIES PLOT SCALE: 1:1

BENTONITE CLAY DAMS

CATEGORY	LOCATION	SPV.0060.38
0000	UNDISTRIBUTED	EA
		4

WATER MAIN INSULATION

CATEGORY	ALIGNMENT	STATION	LOCATION	SPV.0090.39
0000				LF*
	CTH A	09+46.0	14.5' RT	8
	CTH A	09+32.0	29' LT	8
	89 PROP	34+83.0	7' LT	8
	CS	09+69.9	5' LT	8
	89 PROP	44+28.3	7.2' LT	8
	WBR	09+63.9	8' RT	8
	89 PROP	47+38.1	40.5' RT	8
	SCD	10+34.0	26.3' RT	8
	SCD	10+14.4	11.2' LT	8
	KS	09+69.7	11.2' LT	8
	89 PROP	59+00	7' LT	8
	89 PROP	59+00	31' LT	8
	LPP	09+64.1	8.5' RT	8
	LPP	09+93.0	8.4' RT	8
	LPP	10+30.7	7.8' RT	8
	PL	09+67.8	7.5' RT	8
	VL	9+89.1	13.8' RT	8
	VL	9+60.2	18.0' LT	8
	89 PROP	85+20.0	29' RT	16
	89 PROP	89+58.5	0.0'	8
	WLS	09+50.6	10.5' RT	8
	WLS	09+57.1	6.4' LT	8
	UNDISTRIBUTED			336
	TOTALS			550

*ACTUAL QUANTITY AND LOCATION TO BE FIELD DETERMINED BY ENGINEER

SANITARY SEWER MANHOLE (4-FOOT DIAMETER)

CATEGORY	STRUCTURE NUMBER	REFERENCE ALIGNMENT	STATION	LOCATION (OFFSET)	FINAL TOP OF CASTING	IE	DEPTH	EA
0020								
	1	CTH A	8+52.05	0.00	861.03	850.61	10.4	EA
	2	89 PROP	31+74.28	-26.83	860.26	849.68	10.6	EA
	3	89 PROP	32+97.92	-9.22	860.08	849.25	10.8	EA
	4	89 PROP	34+75.00	1.00	858.52	848.70	9.8	EA
	5	89 PROP	38+13.29	1.01	860.26	847.76	12.5	EA
	6	89 PROP	40+45.00	5.98	859.53	847.08	12.4	EA
	7	89 PROP	44+37.00	6.00	858.68	846.00	12.7	EA
	8	89 PROP	47+50.00	6.00	860.41	845.32	15.3	EA
	9	89 PROP	51+25.00	6.00	865.96	844.08	21.9	EA
	10	89 PROP	54+96.00	6.00	864.09	843.05	21.0	EA
	11	89 PROP	58+32.00	6.00	860.74	841.96	18.8	EA
	12	89 PROP	62+87.00	6.00	857.87	840.87	17.0	EA
	13	89 PROP	65+00.00	6.00	859.11	840.24	18.9	EA
	14	89 PROP	68+37.00	6.00	861.11	839.30	21.8	EA
	15	89 PROP	72+25.00	6.00	856.40	838.23	18.2	EA
	16	89 PROP	76+00.00	6.00	843.76	833.90	9.9	EA
	17	89 PROP	79+60.00	6.00	841.12	831.45	9.7	EA
	18	89 PROP	83+80.00	6.00	836.99	827.72	11.3	EA
	19	89 PROP	84+91.98	0.18	833.72	826.00	7.7	EA
	20	89 PROP	86+33.42	0.00	830.28	821.55	8.7	EA
	21	89 PROP	86+77.83	-4.64	829.93	821.70	8.2	EA
	1A	89 PROP	29+75.00	0.00	858.88	850.29	8.6	EA
	4A	SBR	9+21.52	-0.14	858.04	850.26	7.8	EA
	5A	CS	9+57.51	2.36	860.40	851.25	9.1	EA
	7A	WBR	9+46.99	-0.36	859.09	849.25	9.8	EA
	89 PROP	40+43.22	-9.07	859.46	850.89	8.6	EA	
	UNDISTRIBUTED							
	TOTALS							26

WATER MAIN INSULATION

CATEGORY	ALIGNMENT	STATION	OFFSET TO MAIN CONNECTION	1-INCH	2-INCH	1-INCH	2-INCH	SPV.0090.39
0000 (CONT)				LF	EA	LF	EA	LF
	89 PROP	80+01.80	30.50	7	1	---	---	---
	89 PROP	80+21.55	30.50	61	1	---	---	8
	89 PROP	80+161.00	30.50	7	1	---	---	8
	89 PROP	80+63.20	30.50	61	1	---	---	8
	89 PROP	81+35.50	30.50	61	1	---	---	8
	89 PROP	81+61.60	30.50	7	1	---	---	---
	89 PROP	82+00.00	30.50	7	1	---	---	---
	89 PROP	82+55.00	30.00	61	1	---	---	8
	89 PROP	83+00.00	21.50	8	1	---	---	---
	89 PROP	83+52.40	24.50	54	1	---	---	8
	89 PROP	83+54.50	24.50	7	1	---	---	---
	89 PROP	83+95.40	24.50	7	1	---	---	---
	89 PROP	84+39.80	25.00	9	1	---	---	---
	89 PROP	84+71.40	25.00	11	1	---	---	---
	89 PROP	85+79.50	25.50	9	1	---	---	---
	89 PROP	85+08.60	25.00	58	1	---	---	8
	89 PROP	85+20.40	24.00	60	1	---	---	---
	89 PROP	86+52.00	20.90	60	1	---	---	8
	89 PROP	86+93.30	18.00	56	1	---	---	8
	89 PROP	87+46.50	16.00	55	1	---	---	8
	89 PROP	87+72.25	16.00	55	1	---	---	8
	89 PROP	88+11.30	16.00	55	1	---	---	8
	89 PROP	88+36.00	16.00	55	1	---	---	8
	89 PROP	88+54.00	16.00	55	1	---	---	8
	89 PROP	88+79.30	15.50	55	1	---	---	8
	89 PROP	90+31.00	37.00	75	1	---	---	---
	89 PROP	90+41.30	37.00	75	1	---	---	---
	89 PROP	90+50.80	37.00	75	1	---	---	---
	89 PROP	90+88.00	37.00	74	1	---	---	---
	89 PROP	91+61.00	36.80	74	1	---	---	---
	89 PROP	91+72.40	36.70	74	1	---	---	---
	89 PROP	92+02.40	36.50	74	1	---	---	---
	89 PROP	92+39.40	36.70	74	1	---	---	---
	89 PROP	92+62.40	36.50	73	1	---	---	---
	89 PROP	92+75.30	36.50	73	1	---	---	---
	89 PROP	93+65.50	36.50	74	1	---	---	---
	89 PROP	94+33.80	35.90	72	1	---	---	---
	89 PROP	94+55.20	35.70	72	1	---	---	---
	WS	11+02.55	-8.60	41	1	---	---	---
	WLS	9+57.32	10.40	48	1	---	---	---
	UNDISTRIBUTED			100	200	5	7	12
	SUBTOTALS			2,089	200	45	7	112
	TOTALS			5,153	200	135	7	142

*SEE WATER MAIN INSULATION TABLE FOR ADD'L ITEMS

Addendum No. 01
ID 3300-01-73
Revised Sheet 206
February 26, 2018

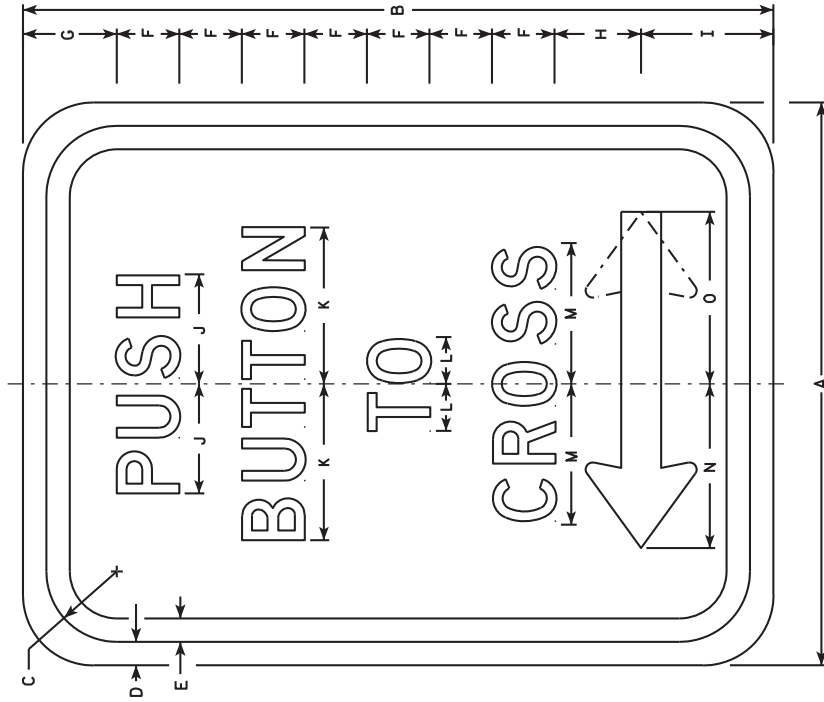
Addendum No. 01
ID 3300-01-73
Revised Sheet 208
February 26, 2018

SANTARY SEWER PIPES															
CATEGORY	LOCATION (DOWNSTREAM)	LOCATION (UPSTREAM)	IE (DOWNSTREAM)	IE (UPSTREAM)	SLOPE (%)	SDR 35				SDR 26				CONNECT TO EXISTING SANITARY SEWER, MAIN OR MANHOLE	
						8-INCH LF	10-INCH LF	12-INCH LF	15-INCH LF	12-INCH LF	15-INCH LF	18-INCH LF	24-INCH LF		
0020	2	1	850.01	850.61	0.49%	223								62	
	3	2	849.35	849.68	0.25%			131						66	
	4	3	848.80	849.25	0.25%			179						90	
	5	4	847.86	848.70	0.25%			338						159	
	6	5	847.18	847.76	0.25%			232						116	
	7	6	846.10	847.08	0.25%			392						196	
	8	7	845.21	846.00	0.25%			313						157	
	9	8	844.18	845.12	0.25%			375						188	
	10	9	843.15	844.08	0.25%			371						186	
	11	10	842.06	843.05	0.25%			396						198	
	12	11	840.97	841.96	0.25%			395						198	
	13	12	840.34	840.87	0.25%			213						107	
	14	13	839.40	840.24	0.25%			337						159	
	15	14	838.33	839.30	0.25%							388		194	
	16	15	834.00	838.23	1.13%							375		188	
	17	16	831.50	833.90	0.67%							360		180	
	18	17	827.77	831.45	1.05%			349						175	
	19	18	826.05	827.72	0.92%			181						91	
	20	19	821.80	826.00	2.97%							141		71	
EX MH SAN-1	20	20	819.64	821.55	1.77%						108			54	
EX MH SAN-6941	21	21	820.55	821.70	0.40%									144	
	12	CONNECT TO EXISTING	846.99	848.86	3.33%			287						144	
	10	CONNECT TO EXISTING	848.79	850.11	2.86%			46						28	
	10	CONNECT TO EXISTING	849.10	849.68	0.14%			78						23	
	11	CONNECT TO EXISTING	847.84	849.58	3.48%			50						39	
	14	CONNECT TO EXISTING	846.15	846.35	0.40%			50						25	
	19	CONNECT TO EXISTING	826.40	826.56	0.26%			60						25	
	2	1A	849.78	850.29	0.25%			207						30	
	4	4A	849.47	850.26	1.00%			79						104	
	5	5A	850.70	851.25	1.27%			43						40	
	7	7A	846.98	849.25	0.45%			60						22	
	7	CONNECT TO EXISTING	851.48	851.64	0.40%			40						30	
	6		849.58	850.89	0.66%			15						8	
TOTALS						1,222	15	4,409	108	1,389	3,572	13			

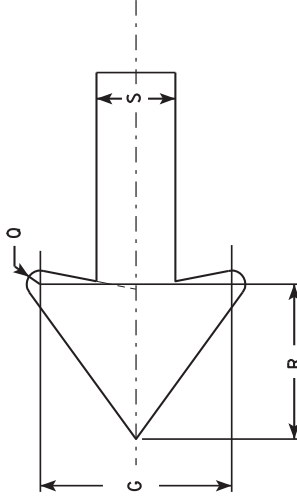
NOTES

1. Sign is Type II - Type H Reflective - reference WIS DOT Standard Specification for HIGHWAY and STRUCTURE CONSTRUCTION latest edition.
2. Color:
Background - White
Message - Black
3. Message Series - D
4. Corners may be square or rounded when base material is plywood but borders shall be rounded as shown. When base material is metal, the corners and borders shall be rounded.
5. R10-4D (double)
R10-4L (left)
R10-4R (right)

Addendum No. 01
ID 3300-01-73
Added Sheet 337A
February 26, 2018



ARROW DETAIL



R10-4D, L & R

SIZE	A	B	C	D	E	F	G	H	I	J	K	L	M	N	O	P	Q	R	S	T	U	V	W	X	Y	Z	APPROX. SQ. FT.
1	6	9	1/2	1/8	1/8	3/4	1 1/8	1	1 5/8	1 1/4	1 3/4	1/2	1 1/2	1 3/4	1 1/8	1/6	1/6	1/6	1/2								0.38
2S	9	12	1 1/8	3/8	3/8	1	1 1/2	1 3/8	2 1/8	2 3/4	2 1/2	3/4	2 1/4	2 5/8	2 3/4	1/8	1/8	1 1/4	5/8								0.75
2M	9	12	1 1/8	3/8	3/8	1	1 1/2	1 3/8	2 1/8	2 3/4	2 1/2	3/4	2 1/4	2 5/8	2 3/4	1/8	1/8	1 1/4	5/8								0.75
3																											
4																											
5																											

STANDARD SIGN
R10-4D, L & R

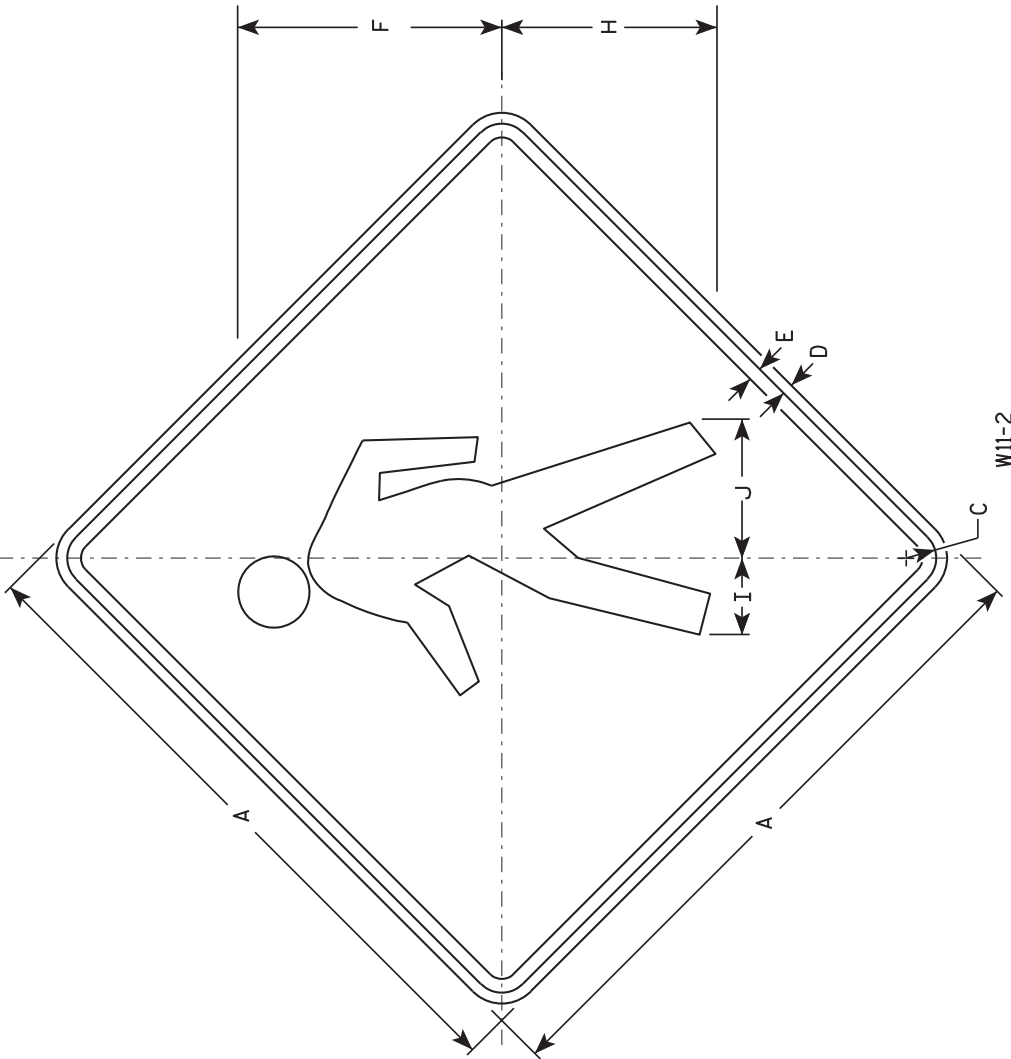
APPROVED
Matthew P. Rowch
State Traffic Engineer
DATE 4/5/11 PLATE NO. R10-4D.5

SHEET NO: 337A E

PROJECT NO: COUNTY: HWY: PLOT DATE: 05-APR-2011 10:10 PLOT BY: mscj:bn PLOT NAME: WISCONSIN DEPT OF TRANSPORTATION

NOTES

1. Sign is Type II - Type F Reflective - reference WIS DOT Standard Specification for HIGHWAY and STRUCTURE CONSTRUCTION latest edition.
2. Color:
Background - Yellow
Message - Black
3. Corners may be square or rounded when base material is plywood but borders shall be rounded as shown. When base material is metal, the corners and borders shall be rounded.



W11-2

SIZE	A	B	C	D	E	F	G	H	I	J	K	L	M	N	O	P	Q	R	S	T	U	V	W	X	Y	Z	Area
1	24	1 1/8	3/8	1/2	9 3/4	7 7/8	2 7/8	5 1/8	4.0																		
2S	30	1 3/8	1/2	5/8	12 1/8	9 7/8	3 1/2	6 3/8	6.25																		
2M	36	1 5/8	5/8	3/4	14 1/2	11 7/8	4 1/4	7 5/8	9.0																		
3	36	1 5/8	5/8	3/4	14 1/2	11 7/8	4 1/4	7 5/8	9.0																		
4	48	2 1/4	3/4	1	19 3/8	15 3/4	5 5/8	10 1/4	16.0																		

Addendum No. 01
ID 3300-01-73
Added Sheet 347A
February 26, 2018

STANDARD SIGN
W11-2
WISCONSIN DEPT OF TRANSPORTATION
APPROVED *Matthew R. Rauch*
For State Traffic Engineer
DATE 6/7/10 PLATE NO. W11-2.7

PROJECT NO: _____ COUNTY: _____ HWY: _____ SHEET NO: 347A E
PLOT DATE: 07-JUN-2010 13:23 PLOT BY: dt,jph PLOT NAME: _____ PLOT SCALE: 1:5.70681811.000000 WISDOT/CADDIS SHEET 42



Proposal Schedule of Items

Proposal ID: 20180313003 Project(s): 3300-01-73, 3300-01-74

Federal ID(s): WISC 2018137, N/A

SECTION: 0001

Contract Items

Alt Set ID:

Alt Mbr ID:

Proposal Line Number	Item ID Description	Approximate Quantity and Units	Unit Price	Bid Amount
0002	201.0110 Clearing	280.000 SY	_____.	_____.
0004	201.0120 Clearing	1,397.000 ID	_____.	_____.
0006	201.0210 Grubbing	280.000 SY	_____.	_____.
0008	201.0220 Grubbing	2,481.000 ID	_____.	_____.
0010	204.0100 Removing Pavement	14,340.000 SY	_____.	_____.
0012	204.0150 Removing Curb & Gutter	8,254.000 LF	_____.	_____.
0014	204.0155 Removing Concrete Sidewalk	6,245.000 SY	_____.	_____.
0016	204.0195 Removing Concrete Bases	15.000 EACH	_____.	_____.
0018	204.0210 Removing Manholes	10.000 EACH	_____.	_____.
0020	204.0220 Removing Inlets	19.000 EACH	_____.	_____.
0022	204.0235 Removing Buildings (parcel) 01. Parcel #2	LS	LUMP SUM	_____.
0024	204.0240 Site Clearance (parcel) 01. Parcel #2	LS	LUMP SUM	_____.
0026	204.0245 Removing Storm Sewer (size) 01. 8-Inch To 20-Inch	1,272.000 LF	_____.	_____.
0028	204.0245 Removing Storm Sewer (size) 02. 21-Inch To 36-Inch	1,053.000 LF	_____.	_____.
0030	204.9060.S Removing (item description) 01. Street Light Assembly	15.000 EACH	_____.	_____.



Proposal Schedule of Items

Proposal ID: 20180313003 Project(s): 3300-01-73, 3300-01-74

Federal ID(s): WISC 2018137, N/A

SECTION: 0001

Contract Items

Alt Set ID:

Alt Mbr ID:

Proposal Line Number	Item ID Description	Approximate Quantity and Units	Unit Price	Bid Amount
0032	204.9060.S Removing (item description) 02. Stop Sign Flasher Assembly	4.000 EACH	_____.	_____.
0034	204.9090.S Removing (item description) 01. Existing Concrete Steps	37.000 LF	_____.	_____.
0036	205.0100 Excavation Common	41,322.000 CY	_____.	_____.
0038	213.0100 Finishing Roadway (project) 01. 3300-01-73	1.000 EACH	_____.	_____.
0040	305.0110 Base Aggregate Dense 3/4-Inch	1,949.000 TON	_____.	_____.
0042	305.0120 Base Aggregate Dense 1 1/4-Inch	15,423.000 TON	_____.	_____.
0044	312.0110 Select Crushed Material	28,985.000 TON	_____.	_____.
0046	405.0100 Coloring Concrete WisDOT Red	14.000 CY	_____.	_____.
0048	415.0080 Concrete Pavement 8-Inch	32,211.000 SY	_____.	_____.
0050	415.0210 Concrete Pavement Gaps	10.000 EACH	_____.	_____.
0052	415.1080 Concrete Pavement HES 8-Inch	73.000 SY	_____.	_____.
0054	415.5110.S Concrete Pavement Joint Layout	1.000 LS	_____.	_____.
0056	416.0160 Concrete Driveway 6-Inch	2,133.000 SY	_____.	_____.
0058	416.0180 Concrete Driveway 8-Inch	230.000 SY	_____.	_____.
0060	416.0610 Drilled Tie Bars	31.000 EACH	_____.	_____.
0062	416.0620 Drilled Dowel Bars	40.000 EACH	_____.	_____.



Proposal Schedule of Items

Proposal ID: 20180313003 Project(s): 3300-01-73, 3300-01-74

Federal ID(s): WISC 2018137, N/A

SECTION: 0001

Contract Items

Alt Set ID:

Alt Mbr ID:

Proposal Line Number	Item ID Description	Approximate Quantity and Units	Unit Price	Bid Amount
0064	440.4410 Incentive IRI Ride	4,992.000 DOL	1.00000	4,992.00
0066	455.0605 Tack Coat	82.700 GAL	_____	_____
0068	465.0105 Asphaltic Surface	421.000 TON	_____	_____
0070	465.0120 Asphaltic Surface Driveways and Field Entrances	212.000 TON	_____	_____
0072	465.0125 Asphaltic Surface Temporary	233.000 TON	_____	_____
0074	522.1015 Apron Endwalls for Culvert Pipe Reinforced Concrete 15-Inch	1.000 EACH	_____	_____
0076	522.1030 Apron Endwalls for Culvert Pipe Reinforced Concrete 30-Inch	1.000 EACH	_____	_____
0078	522.1036 Apron Endwalls for Culvert Pipe Reinforced Concrete 36-Inch	1.000 EACH	_____	_____
0080	601.0409 Concrete Curb & Gutter 30-Inch Type A	13,587.000 LF	_____	_____
0082	601.0411 Concrete Curb & Gutter 30-Inch Type D	1,016.000 LF	_____	_____
0084	601.0586 Concrete Curb & Gutter 4-Inch Sloped 30-Inch Type TBTT	30.000 LF	_____	_____
0086	602.0405 Concrete Sidewalk 4-Inch	67,993.000 SF	_____	_____
0088	602.0415 Concrete Sidewalk 6-Inch	122.000 SF	_____	_____
0090	602.0505 Curb Ramp Detectable Warning Field Yellow	668.000 SF	_____	_____
0092	602.1500 Concrete Steps	177.000 SF	_____	_____



Proposal Schedule of Items

Proposal ID: 20180313003 Project(s): 3300-01-73, 3300-01-74

Federal ID(s): WISC 2018137, N/A

SECTION: 0001

Contract Items

Alt Set ID:

Alt Mbr ID:

Proposal Line Number	Item ID Description	Approximate Quantity and Units	Unit Price	Bid Amount
0094	608.0315 Storm Sewer Pipe Reinforced Concrete Class III 15-Inch	311.000 LF	_____	_____
0096	608.0324 Storm Sewer Pipe Reinforced Concrete Class III 24-Inch	2,562.000 LF	_____	_____
0098	608.0330 Storm Sewer Pipe Reinforced Concrete Class III 30-Inch	442.000 LF	_____	_____
0100	608.0336 Storm Sewer Pipe Reinforced Concrete Class III 36-Inch	693.000 LF	_____	_____
0102	608.0412 Storm Sewer Pipe Reinforced Concrete Class IV 12-Inch	589.000 LF	_____	_____
0104	608.0415 Storm Sewer Pipe Reinforced Concrete Class IV 15-Inch	1,470.000 LF	_____	_____
0106	608.0424 Storm Sewer Pipe Reinforced Concrete Class IV 24-Inch	1,835.000 LF	_____	_____
0108	611.0530 Manhole Covers Type J	48.000 EACH	_____	_____
0110	611.0612 Inlet Covers Type C	2.000 EACH	_____	_____
0112	611.0624 Inlet Covers Type H	90.000 EACH	_____	_____
0114	611.1004 Catch Basins 4-FT Diameter	1.000 EACH	_____	_____
0116	611.1006 Catch Basins 6-FT Diameter	9.000 EACH	_____	_____
0118	611.1230 Catch Basins 2x3-FT	2.000 EACH	_____	_____
0120	611.2004 Manholes 4-FT Diameter	22.000 EACH	_____	_____
0122	611.2005 Manholes 5-FT Diameter	9.000 EACH	_____	_____



Proposal Schedule of Items

Proposal ID: 20180313003 Project(s): 3300-01-73, 3300-01-74

Federal ID(s): WISC 2018137, N/A

SECTION: 0001

Contract Items

Alt Set ID:

Alt Mbr ID:

Proposal Line Number	Item ID Description	Approximate Quantity and Units	Unit Price	Bid Amount
0124	611.2006 Manholes 6-FT Diameter	6.000 EACH	_____.	_____.
0126	611.2007 Manholes 7-FT Diameter	1.000 EACH	_____.	_____.
0128	611.3003 Inlets 3-FT Diameter	2.000 EACH	_____.	_____.
0130	611.3004 Inlets 4-FT Diameter	24.000 EACH	_____.	_____.
0132	611.3230 Inlets 2x3-FT	57.000 EACH	_____.	_____.
0134	611.8105 Adjusting Catch Basin Covers	2.000 EACH	_____.	_____.
0136	611.8115 Adjusting Inlet Covers	2.000 EACH	_____.	_____.
0138	611.8120.S Cover Plates Temporary	10.000 EACH	_____.	_____.
0140	618.0100 Maintenance And Repair of Haul Roads (project) 01. 3300-01-73	1.000 EACH	_____.	_____.
0142	619.1000 Mobilization	1.000 EACH	_____.	_____.
0144	624.0100 Water	210.000 MGAL	_____.	_____.
0146	625.0100 Topsoil	12,813.000 SY	_____.	_____.
0150	628.1504 Silt Fence	1,890.000 LF	_____.	_____.
0152	628.1520 Silt Fence Maintenance	1,890.000 LF	_____.	_____.
0154	628.1905 Mobilizations Erosion Control	10.000 EACH	_____.	_____.
0156	628.1910 Mobilizations Emergency Erosion Control	8.000 EACH	_____.	_____.



Proposal Schedule of Items

Proposal ID: 20180313003 Project(s): 3300-01-73, 3300-01-74

Federal ID(s): WISC 2018137, N/A

SECTION: 0001

Contract Items

Alt Set ID:

Alt Mbr ID:

Proposal Line Number	Item ID Description	Approximate Quantity and Units	Unit Price	Bid Amount
0158	628.2006 Erosion Mat Urban Class I Type A	21,858.000 SY	_____.	_____.
0160	628.2027 Erosion Mat Class II Type C	125.000 SY	_____.	_____.
0162	628.7005 Inlet Protection Type A	45.000 EACH	_____.	_____.
0164	628.7015 Inlet Protection Type C	56.000 EACH	_____.	_____.
0166	628.7020 Inlet Protection Type D	48.000 EACH	_____.	_____.
0168	628.7560 Tracking Pads	3.000 EACH	_____.	_____.
0170	629.0210 Fertilizer Type B	7.790 CWT	_____.	_____.
0172	630.0140 Seeding Mixture No. 40	222.200 LB	_____.	_____.
0174	630.0200 Seeding Temporary	28.800 LB	_____.	_____.
0176	634.0614 Posts Wood 4x6-Inch X 14-FT	3.000 EACH	_____.	_____.
0178	634.0616 Posts Wood 4x6-Inch X 16-FT	18.000 EACH	_____.	_____.
0180	634.0618 Posts Wood 4x6-Inch X 18-FT	13.000 EACH	_____.	_____.
0182	634.0810 Posts Tubular Steel 2x2-Inch X 10-FT	2.000 EACH	_____.	_____.
0184	634.0811 Posts Tubular Steel 2x2-Inch X 11-FT	49.000 EACH	_____.	_____.
0186	634.0812 Posts Tubular Steel 2x2-Inch X 12-FT	5.000 EACH	_____.	_____.
0188	634.0814 Posts Tubular Steel 2x2-Inch X 14-FT	8.000 EACH	_____.	_____.
0190	637.2210 Signs Type II Reflective H	659.560 SF	_____.	_____.



Proposal Schedule of Items

Proposal ID: 20180313003 Project(s): 3300-01-73, 3300-01-74

Federal ID(s): WISC 2018137, N/A

SECTION: 0001

Contract Items

Alt Set ID:

Alt Mbr ID:

Proposal Line Number	Item ID Description	Approximate Quantity and Units	Unit Price	Bid Amount
0192	637.2230 Signs Type II Reflective F	180.000 SF	_____.	_____.
0194	638.2602 Removing Signs Type II	73.000 EACH	_____.	_____.
0196	638.3000 Removing Small Sign Supports	67.000 EACH	_____.	_____.
0198	638.4000 Moving Small Sign Supports	8.000 EACH	_____.	_____.
0200	642.5401 Field Office Type D	1.000 EACH	_____.	_____.
0202	643.0300 Traffic Control Drums	360.000 DAY	_____.	_____.
0204	643.0420 Traffic Control Barricades Type III	7,045.000 DAY	_____.	_____.
0206	643.0705 Traffic Control Warning Lights Type A	8,382.000 DAY	_____.	_____.
0208	643.0900 Traffic Control Signs	64,262.000 DAY	_____.	_____.
0210	643.0920 Traffic Control Covering Signs Type II	42.000 EACH	_____.	_____.
0212	643.1000 Traffic Control Signs Fixed Message	476.000 SF	_____.	_____.
0214	643.1050 Traffic Control Signs PCMS	52.000 DAY	_____.	_____.
0216	643.5000 Traffic Control	1.000 EACH	_____.	_____.
0218	644.1410.S Temporary Pedestrian Surface Asphalt	3,458.000 SF	_____.	_____.
0220	644.1616.S Temporary Pedestrian Safety Fence	3,567.000 LF	_____.	_____.
0222	646.1020 Marking Line Epoxy 4-Inch	20,229.000 LF	_____.	_____.
0224	646.5020 Marking Arrow Epoxy	2.000 EACH	_____.	_____.



Proposal Schedule of Items

Proposal ID: 20180313003 Project(s): 3300-01-73, 3300-01-74

Federal ID(s): WISC 2018137, N/A

SECTION: 0001

Contract Items

Alt Set ID:

Alt Mbr ID:

Proposal Line Number	Item ID Description	Approximate Quantity and Units	Unit Price	Bid Amount
0226	646.6120 Marking Stop Line Epoxy 18-Inch	342.000 LF	_____.	_____.
0228	646.7420 Marking Crosswalk Epoxy Transverse Line 6-Inch	1,265.000 LF	_____.	_____.
0230	646.8120 Marking Curb Epoxy	1,133.000 LF	_____.	_____.
0232	646.8320 Marking Parking Stall Epoxy	444.000 LF	_____.	_____.
0234	649.0150 Temporary Marking Line Removable Tape 4-Inch	960.000 LF	_____.	_____.
0236	650.4000 Construction Staking Storm Sewer	146.000 EACH	_____.	_____.
0238	650.4500 Construction Staking Subgrade	8,043.000 LF	_____.	_____.
0240	650.5000 Construction Staking Base	518.000 LF	_____.	_____.
0242	650.5500 Construction Staking Curb Gutter and Curb & Gutter	1,016.000 LF	_____.	_____.
0244	650.7000 Construction Staking Concrete Pavement	7,526.000 LF	_____.	_____.
0246	650.8500 Construction Staking Electrical Installations (project) 01. 3300-01-73	LS	LUMP SUM	_____.
0248	650.9000 Construction Staking Curb Ramps	62.000 EACH	_____.	_____.
0250	650.9910 Construction Staking Supplemental Control (project) 01. 3300-01-73	LS	LUMP SUM	_____.
0252	650.9920 Construction Staking Slope Stakes	8,043.000 LF	_____.	_____.
0254	652.0215 Conduit Rigid Nonmetallic Schedule 40 1 1/4-Inch	465.000 LF	_____.	_____.



Proposal Schedule of Items

Proposal ID: 20180313003 Project(s): 3300-01-73, 3300-01-74

Federal ID(s): WISC 2018137, N/A

SECTION: 0001

Contract Items

Alt Set ID:

Alt Mbr ID:

Proposal Line Number	Item ID Description	Approximate Quantity and Units	Unit Price	Bid Amount
0256	652.0225 Conduit Rigid Nonmetallic Schedule 40 2-Inch	12,302.000 LF	_____.	_____.
0258	653.0140 Pull Boxes Steel 24x42-Inch	2.000 EACH	_____.	_____.
0260	654.0101 Concrete Bases Type 1	9.000 EACH	_____.	_____.
0264	654.0105 Concrete Bases Type 5	8.000 EACH	_____.	_____.
0266	654.0230 Concrete Control Cabinet Bases Type L30	3.000 EACH	_____.	_____.
0268	655.0610 Electrical Wire Lighting 12 AWG	6,234.000 LF	_____.	_____.
0270	655.0615 Electrical Wire Lighting 10 AWG	2,094.000 LF	_____.	_____.
0272	655.0635 Electrical Wire Lighting 2 AWG	47,810.000 LF	_____.	_____.
0274	656.0400 Electrical Service Main Lugs Only Meter Pedestal (location) 01. STA 34+96.8, 39.0' LT	LS	LUMP SUM	_____.
0276	656.0400 Electrical Service Main Lugs Only Meter Pedestal (location) 02. STA 62+63.4, 63.5' RT	LS	LUMP SUM	_____.
0278	656.0400 Electrical Service Main Lugs Only Meter Pedestal (location) 03. STA 85+08.9, 45.3' LT	LS	LUMP SUM	_____.
0280	657.0100 Pedestal Bases	8.000 EACH	_____.	_____.
0282	657.0415 Traffic Signal Standards Aluminum 11-FT	4.000 EACH	_____.	_____.
0284	658.0170 Traffic Signal Face 1S 8-Inch	4.000 EACH	_____.	_____.



Proposal Schedule of Items

Proposal ID: 20180313003 Project(s): 3300-01-73, 3300-01-74

Federal ID(s): WISC 2018137, N/A

SECTION: 0001

Contract Items

Alt Set ID:

Alt Mbr ID:

Proposal Line Number	Item ID Description	Approximate Quantity and Units	Unit Price	Bid Amount
0286	659.2130 Lighting Control Cabinets 120/240 30-Inch	3.000 EACH	_____.	_____.
0288	690.0150 Sawing Asphalt	2,103.000 LF	_____.	_____.
0290	690.0250 Sawing Concrete	3,378.000 LF	_____.	_____.
0292	715.0415 Incentive Strength Concrete Pavement	8,494.000 DOL	1.00000	8,494.00
0294	999.1000.S Seismograph	LS	LUMP SUM	_____.
0296	999.1500.S Crack and Damage Survey	LS	LUMP SUM	_____.
0298	ASP.1T0A On-the-Job Training Apprentice at \$5.00/HR	2,200.000 HRS	5.00000	11,000.00
0300	ASP.1T0G On-the-Job Training Graduate at \$5.00/HR	1,550.000 HRS	5.00000	7,750.00
0302	SPV.0035 Special 26. Granular Backfill, Sanitary Sewer	3,572.000 CY	_____.	_____.
0304	SPV.0035 Special 27. Granular Backfill, Water Main	3,595.000 CY	_____.	_____.
0306	SPV.0045 Special 01. Temporary Curb Ramp	3,964.000 DAY	_____.	_____.
0308	SPV.0045 Special 02. Temporary Crosswalk	2,018.000 DAY	_____.	_____.
0310	SPV.0060 Special 01. Remove, Salvage, And Reinstall Stop Sign Flasher Assembly	1.000 EACH	_____.	_____.
0312	SPV.0060 Special 02. Landmark Reference Monuments Special	2.000 EACH	_____.	_____.
0314	SPV.0060 Special 03. Research And Locate Existing Land Parcel Monuments	64.000 EACH	_____.	_____.



Proposal Schedule of Items

Proposal ID: 20180313003 Project(s): 3300-01-73, 3300-01-74

Federal ID(s): WISC 2018137, N/A

SECTION: 0001

Contract Items

Alt Set ID:

Alt Mbr ID:

Proposal Line Number	Item ID Description	Approximate Quantity and Units	Unit Price	Bid Amount
0316	SPV.0060 Special 04. Verify And Replace Existing Land Parcel Monuments	64.000 EACH	_____.	_____.
0318	SPV.0060 Special 05. Inlet Cover Type 3290A	4.000 EACH	_____.	_____.
0320	SPV.0060 Special 06. Connect Storm Sewer To Existing Manhole	6.000 EACH	_____.	_____.
0322	SPV.0060 Special 07. Connect Storm Sewer Manhole To Existing Storm Sewer Pipe	10.000 EACH	_____.	_____.
0324	SPV.0060 Special 26. Connect to Existing Water Main	19.000 EACH	_____.	_____.
0326	SPV.0060 Special 27. Connect to Existing Water Service	142.000 EACH	_____.	_____.
0328	SPV.0060 Special 28. Water Service Corporation, Curb Stop and Box, 1-Inch	135.000 EACH	_____.	_____.
0330	SPV.0060 Special 29. Water Service Corporation, Curb Stop, and Box, 2-Inch	7.000 EACH	_____.	_____.
0332	SPV.0060 Special 30. Fire Hydrant with Auxilary Valve and 6-Inch Lead	18.000 EACH	_____.	_____.
0334	SPV.0060 Special 31. Water Main Gate Valve and Valve Box, 6-Inch	2.000 EACH	_____.	_____.
0336	SPV.0060 Special 32. Water Main Gate Valve and Valve Box, 8-Inch	10.000 EACH	_____.	_____.
0338	SPV.0060 Special 33. Water Main Gate Valve and Valve Box, 10-Inch	4.000 EACH	_____.	_____.
0340	SPV.0060 Special 34. Water Main Gate Valve and Valve Box, 12-Inch	18.000 EACH	_____.	_____.



Proposal Schedule of Items

Proposal ID: 20180313003 Project(s): 3300-01-73, 3300-01-74

Federal ID(s): WISC 2018137, N/A

SECTION: 0001

Contract Items

Alt Set ID:

Alt Mbr ID:

Proposal Line Number	Item ID Description	Approximate Quantity and Units	Unit Price	Bid Amount
0342	SPV.0060 Special 35. Adjust Existing Valve Box	6.000 EACH	_____.	_____.
0344	SPV.0060 Special 36. Water Main Offset	5.000 EACH	_____.	_____.
0346	SPV.0060 Special 37. Utility Line Opening (ULO)	12.000 EACH	_____.	_____.
0348	SPV.0060 Special 38. Betonite Clay Dams	4.000 EACH	_____.	_____.
0350	SPV.0060 Special 39. Flourocarbon Water Main Gaskets	15.000 EACH	_____.	_____.
0352	SPV.0060 Special 40. Nitrile Water Main Gaskets	20.000 EACH	_____.	_____.
0354	SPV.0060 Special 41. Connect to Existing Sanitary Sewer Main or Manhole	13.000 EACH	_____.	_____.
0356	SPV.0060 Special 42. Connect to Existing Sanitary Sewer Lateral	151.000 EACH	_____.	_____.
0358	SPV.0060 Special 43. Sanitary Sewer Manhole (4-Foot Diameter)	26.000 EACH	_____.	_____.
0360	SPV.0060 Special 44. Construct Outside Drop	7.000 EACH	_____.	_____.
0362	SPV.0060 Special 51. Special Concrete Base-Type 5	66.000 EACH	_____.	_____.
0364	SPV.0060 Special 52. Decorative Pole Assembly-Type 1	66.000 EACH	_____.	_____.
0366	SPV.0060 Special 53. Decorative Pole Assembly-Type 2	8.000 EACH	_____.	_____.
0368	SPV.0090 Special 01. Pipe Underdrain Wrapped 6-Inch And Aggregate	7,612.000 LF	_____.	_____.
0370	SPV.0090 Special 02. Stair Hand Railing	3.000 LF	_____.	_____.



Proposal Schedule of Items

Proposal ID: 20180313003 Project(s): 3300-01-73, 3300-01-74

Federal ID(s): WISC 2018137, N/A

SECTION: 0001

Contract Items

Alt Set ID:

Alt Mbr ID:

Proposal Line Number	Item ID Description	Approximate Quantity and Units	Unit Price	Bid Amount
0372	SPV.0090 Special 03. Concrete Curb And Gutter 30-Inch Type A Special	273.000 LF	_____.	_____.
0374	SPV.0090 Special 26. Water Service Copper, 1- Inch	5,153.000 LF	_____.	_____.
0376	SPV.0090 Special 27. Water Service Copper, 2- Inch	200.000 LF	_____.	_____.
0378	SPV.0090 Special 28. Water Main, Ductile Iron (DI), 6-Inch	204.000 LF	_____.	_____.
0380	SPV.0090 Special 29. Water Main, Ductile Iron (DI), 8-Inch	841.000 LF	_____.	_____.
0382	SPV.0090 Special 30. Water Main, Ductile Iron (DI), 10-Inch	387.000 LF	_____.	_____.
0384	SPV.0090 Special 31. Water Main, Ductile Iron (DI), 12-Inch	5,961.000 LF	_____.	_____.
0386	SPV.0090 Special 32. Sanitary Lateral, 4-Inch	5,095.000 LF	_____.	_____.
0388	SPV.0090 Special 33. Sanitary Lateral, 6-Inch	200.000 LF	_____.	_____.
0390	SPV.0090 Special 34. Sanitary Sewer, Polyvinyl Chloride (PVC), SDR 35, 8-Inch	1,222.000 LF	_____.	_____.
0392	SPV.0090 Special 35. Sanitary Sewer, Polyvinyl Chloride (PVC), SDR 35, 10-Inch	15.000 LF	_____.	_____.
0394	SPV.0090 Special 36. Sanitary Sewer, Polyvinyl Chloride (PVC), SDR 35, 12-Inch	4,409.000 LF	_____.	_____.
0396	SPV.0090 Special 37. Sanitary Sewer, Polyvinyl Chloride (PVC), SDR 26, 12-Inch	1,389.000 LF	_____.	_____.



Proposal Schedule of Items

Proposal ID: 20180313003 Project(s): 3300-01-73, 3300-01-74

Federal ID(s): WISC 2018137, N/A

SECTION: 0001

Contract Items

Alt Set ID:

Alt Mbr ID:

Proposal Line Number	Item ID Description	Approximate Quantity and Units	Unit Price	Bid Amount
0398	SPV.0090 Special 38. Sanitary Sewer, Polyvinyl Chloride (PVC), SDR 35, 15-Inch	108.000 LF	_____.	_____.
0400	SPV.0090 Special 39. Water Main Insulation	550.000 LF	_____.	_____.
0402	SPV.0105 Special 26. Temporary Water Main and Service Connections	LS	LUMP SUM	_____.
0404	SPV.0105 Special 27. Remove Existing Water Main	LS	LUMP SUM	_____.
0406	SPV.0105 Special 28. Abandon Existing Water Main	LS	LUMP SUM	_____.
0408	SPV.0105 Special 29. Abandon Existing Sanitary Sewer	LS	LUMP SUM	_____.
0410	SPV.0195 Special 01. Excavation, Hauling, and Disposal of Contaminated Soil	3,591.000 TON	_____.	_____.
0412	655.0240 Cable Traffic Signal 7-14 AWG	130.000 LF	_____.	_____.
0414	657.0420 Traffic Signal Standards Aluminum 13-FT	4.000 EACH	_____.	_____.
0416	658.0500 Pedestrian Push Buttons	4.000 EACH	_____.	_____.
0418	SPV.0060 Special 54. Pedestrian Activated Flashing Beacon Assembly	2.000 EACH	_____.	_____.
Section: 0001			Total:	_____.
			Total Bid:	_____.