



Wisconsin Department of Transportation

February 15, 2018

Division of Transportation Systems Development

Bureau of Project Development
4802 Sheboygan Avenue, Rm 601
P O Box 7916
Madison, WI 53707-7916

Telephone: (608) 266-1631
Facsimile (FAX): (608) 266-8459

NOTICE TO ALL CONTRACTORS:

Proposal #17: 2190-00-70, WISC 2018 146
West Wisconsin Avenue
N 35th Street to N 20th Street
Local Street
Milwaukee County

2190-00-71, WISC 2018 147
West Wisconsin Avenue
N 38th Street to N 35th Street
USH 18
Milwaukee County

Letting of March 13, 2018

This is Addendum No. 01, which provides for the following:

Schedule of Items:

Revised Bid Item Quantities					
Bid Item	Item Description	Unit	Old Quantity	Revised Quantity	Proposal Total
SPV.0060.002	Installing City Furnished Signs	Each	264	-2	262

Plan Sheets:

PROJECT ID 2190-00-70

Revised Plan Sheets	
Plan Sheet	Plan Sheet Title (brief description of changes to sheet)
133, 134	Permanent Signing Plan (revisions to sign locations and sizes)
137-139, 141-143	Permanent Signing Plan (revisions to sign locations and sizes)
358	Miscellaneous Quantities (revision to sign quantity)

Schedule of Items

Attached, dated February 15, 2018, are the revised Schedule of Items Page 10.

Plan Sheets

The following 8½ x 11-inch sheets are attached and made part of the plans for this proposal:

PROJECT ID 2190-00-70

Revised: 137-139, 141-143, 358

PROJECT ID 2190-00-71

Revised: 133, 134

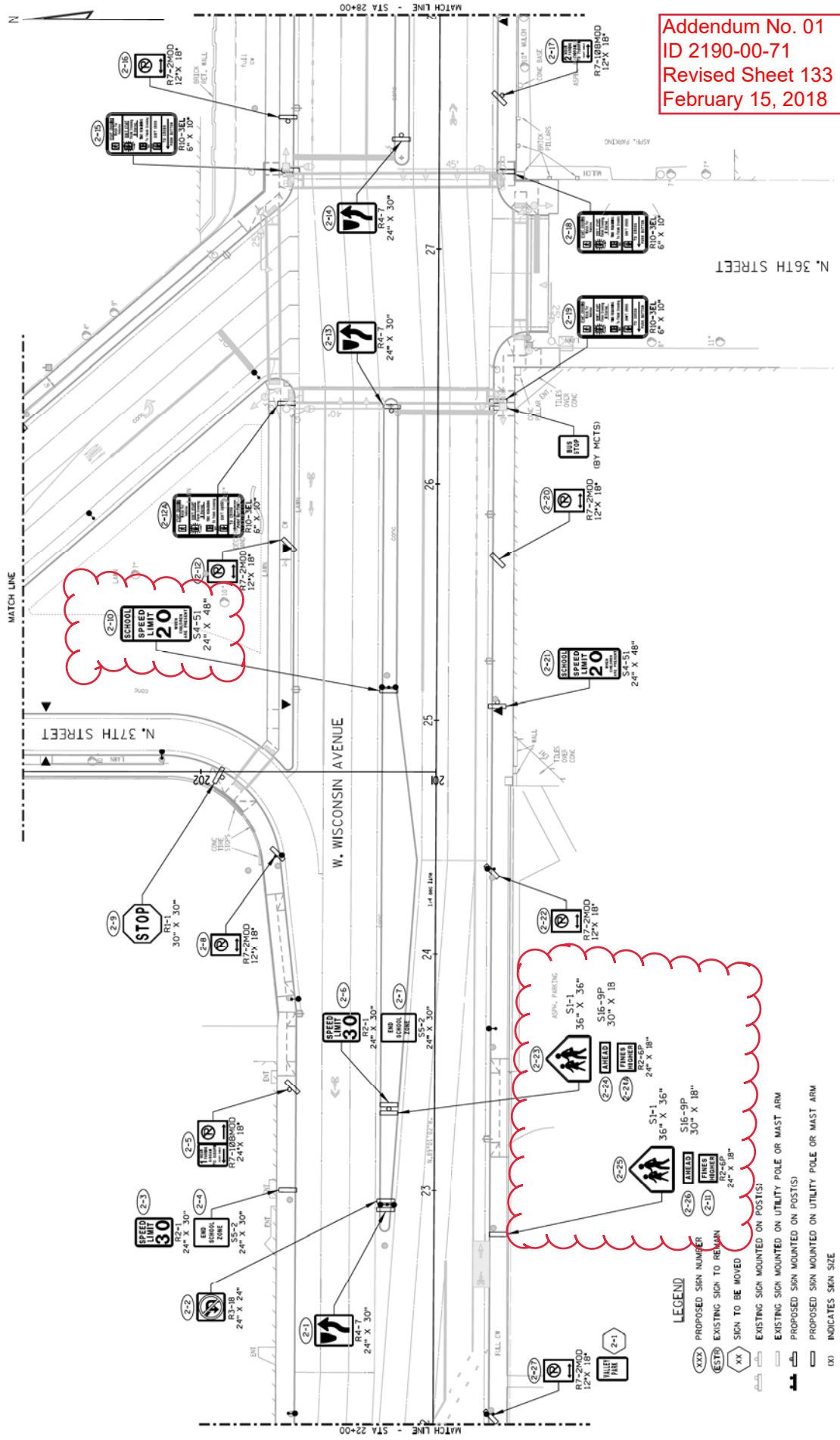
The responsibility for notifying potential subcontractors and suppliers of these changes remains with the prime contractor.

Sincerely,

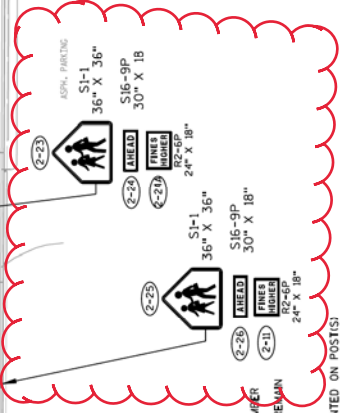
Mike Coleman

Proposal Development Specialist
Proposal Management Section

END OF ADDENDUM

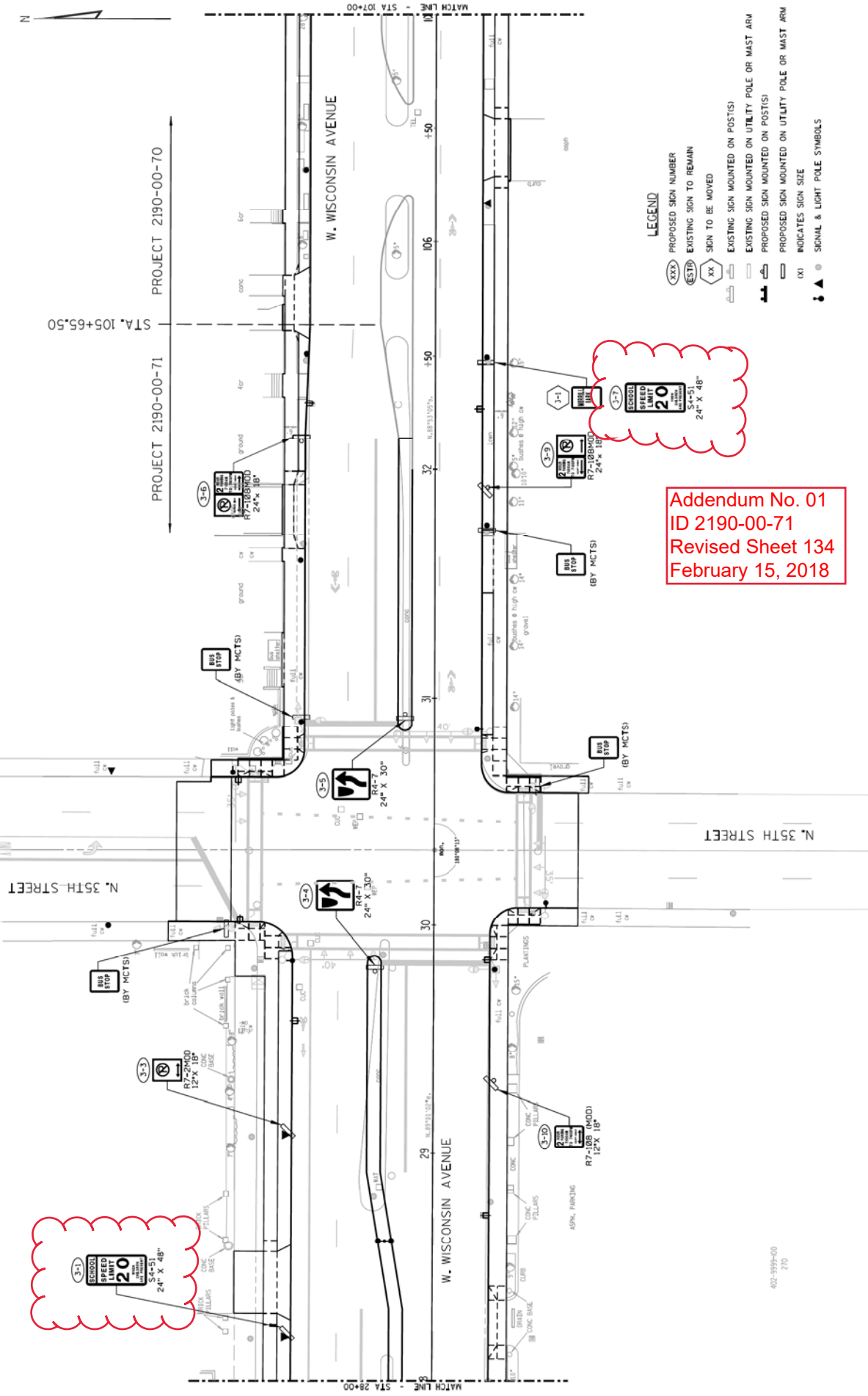


Addendum No. 01
 ID 2190-00-71
 Revised Sheet 133
 February 15, 2018

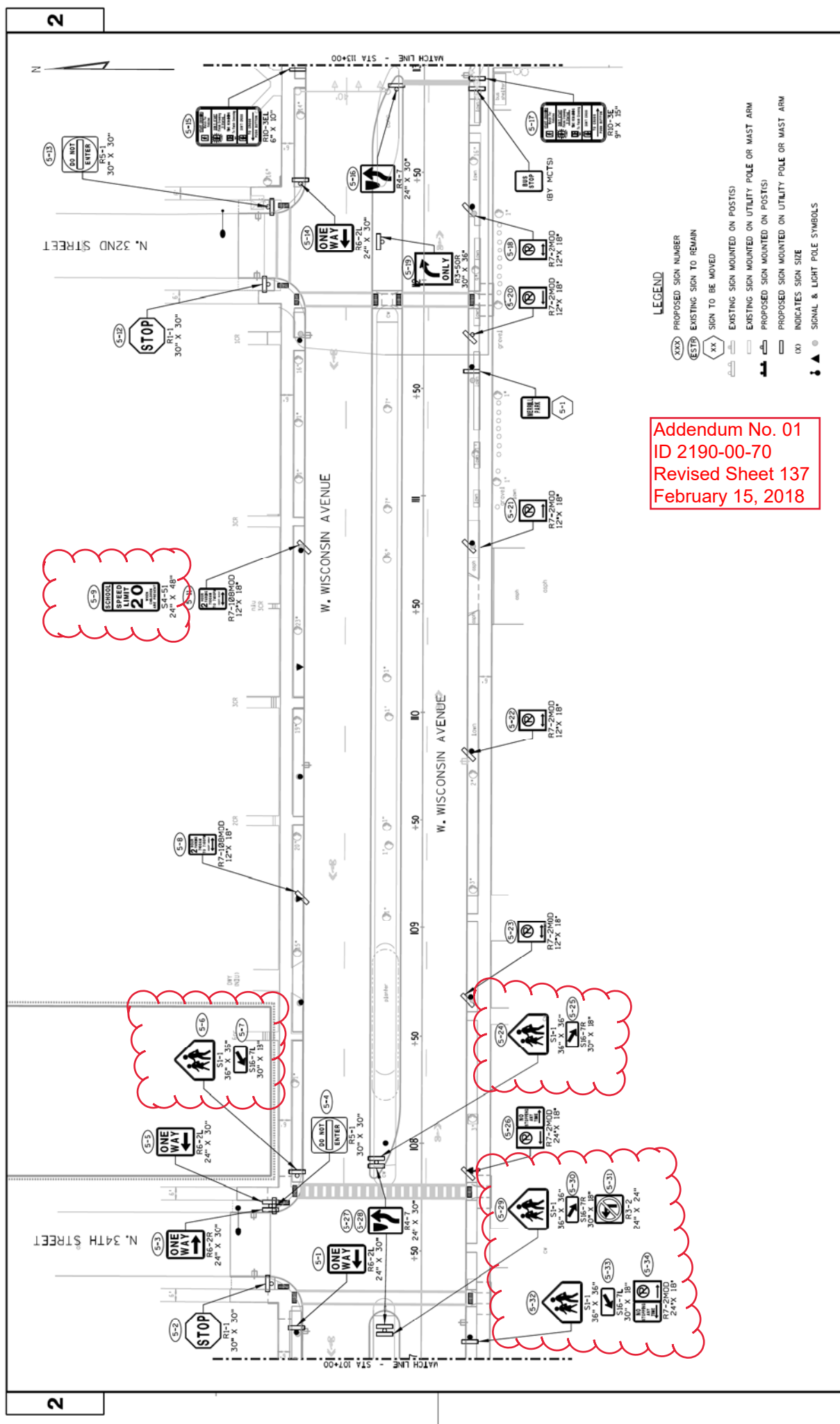


LEGEND

- (XXX) PROPOSED SIGN NUMBER
- (E3TR) EXISTING SIGN TO REMAIN
- XX SIGN TO BE MOVED
- EXISTING SIGN MOUNTED ON POST(S)
- EXISTING SIGN MOUNTED ON UTILITY POLE OR MAST ARM
- PROPOSED SIGN MOUNTED ON POST(S)
- PROPOSED SIGN MOUNTED ON UTILITY POLE OR MAST ARM
- (X) INDICATES SIGN SIZE
- ▲ ● SIGNAL & LIGHT POLE SYMBOLS



Addendum No. 01
 ID 2190-00-71
 Revised Sheet 134
 February 15, 2018

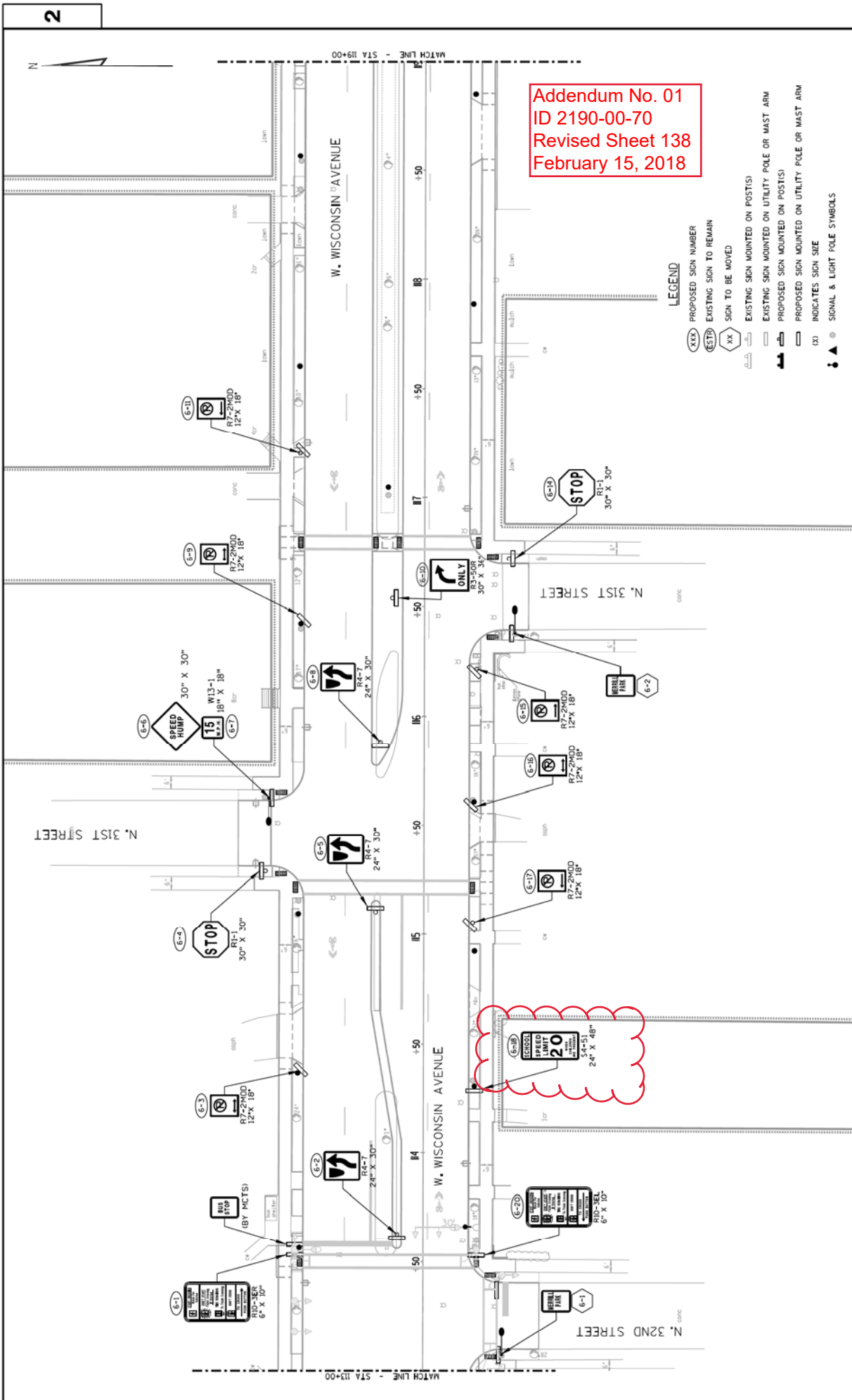


Addendum No. 01
 ID 2190-00-70
 Revised Sheet 137
 February 15, 2018

- LEGEND**
- XXX PROPOSED SIGN NUMBER
 - XXX EXISTING SIGN TO REMAIN
 - XXX SIGN TO BE MOVED
 - EXISTING SIGN MOUNTED ON POST(S)
 - EXISTING SIGN MOUNTED ON UTILITY POLE OR MAST ARM
 - PROPOSED SIGN MOUNTED ON POST(S)
 - PROPOSED SIGN MOUNTED ON UTILITY POLE OR MAST ARM
 - (X) INDICATES SIGN SIZE
 - ▲ SIGNAL & LIGHT POLE SYMBOLS

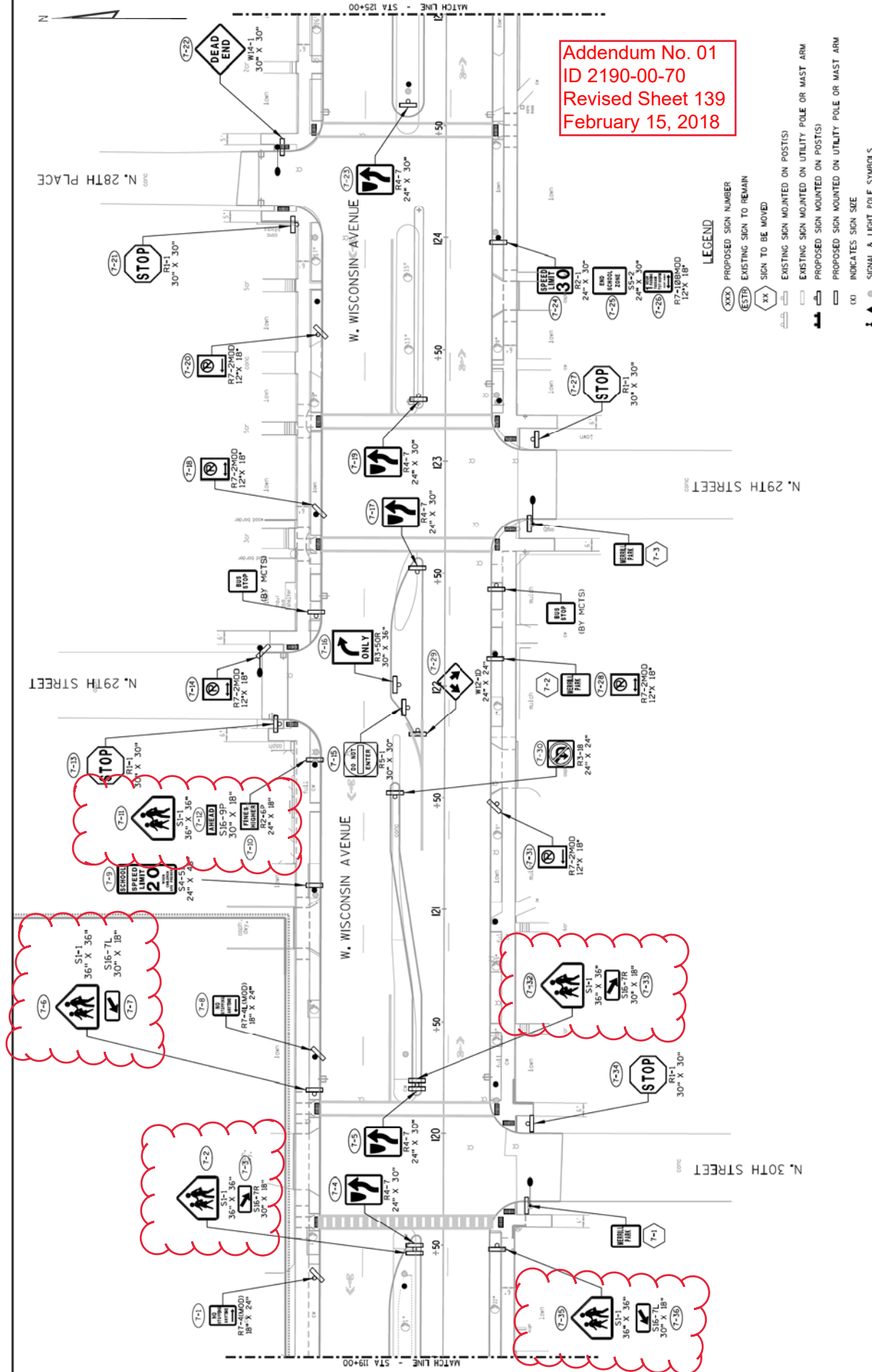
2

2



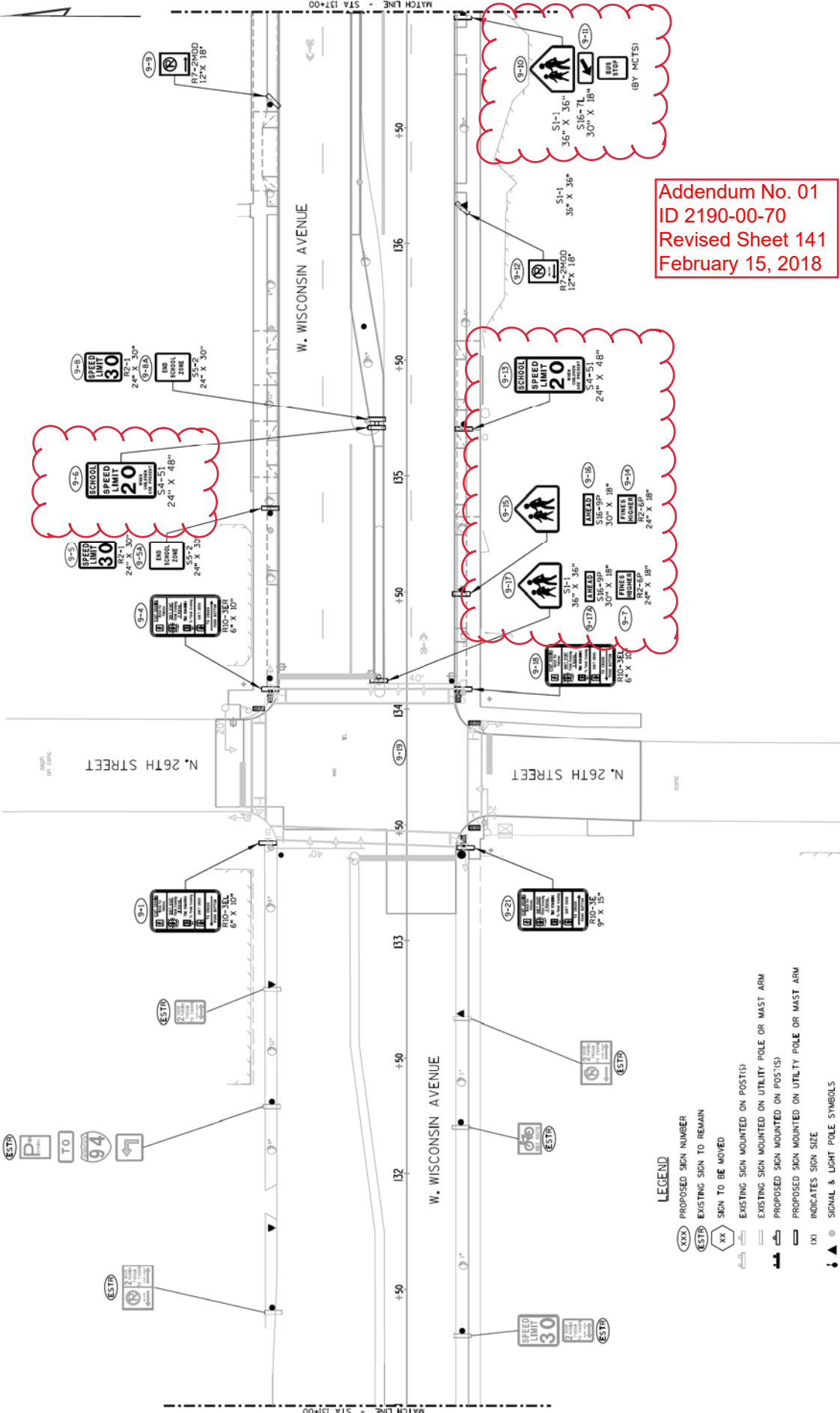
Addendum No. 01
 ID 2190-00-70
 Revised Sheet 138
 February 15, 2018

- LEGEND**
- (XXX) PROPOSED SIGN NUMBER
 - (EST) EXISTING SIGN TO REMAIN
 - (XX) SIGN TO BE MOVED
 - EXISTING SIGN MOUNTED ON POST(S)
 - EXISTING SIGN MOUNTED ON UTILITY POLE OR MAST ARM
 - PROPOSED SIGN MOUNTED ON POST(S)
 - PROPOSED SIGN MOUNTED ON UTILITY POLE OR MAST ARM
 - (X) INDICATES SIGN SIZE
 - ▲ & ● SIGNAL & LIGHT POLE SYMBOLS

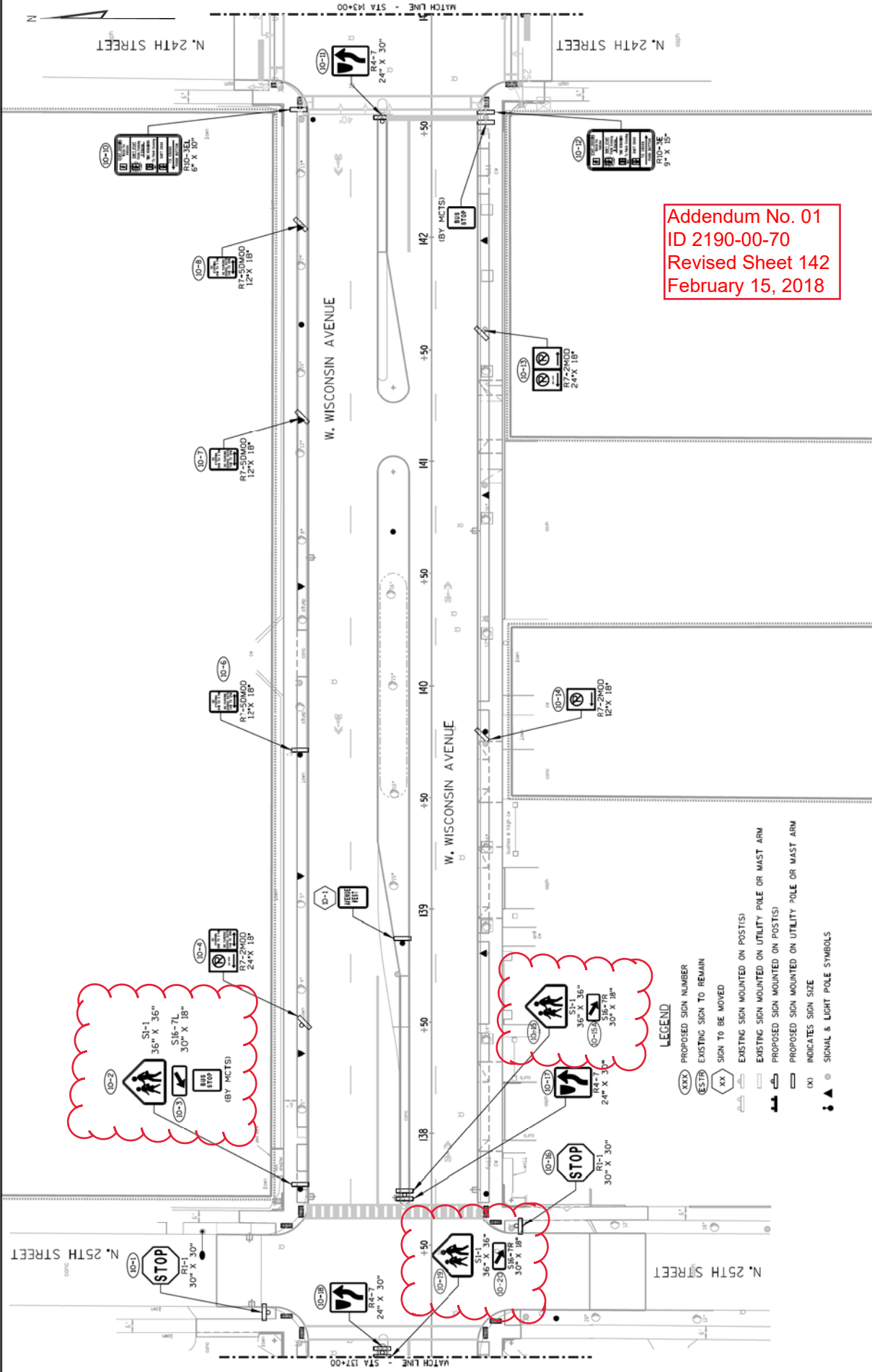


Addendum No. 01
 ID 2190-00-70
 Revised Sheet 139
 February 15, 2018

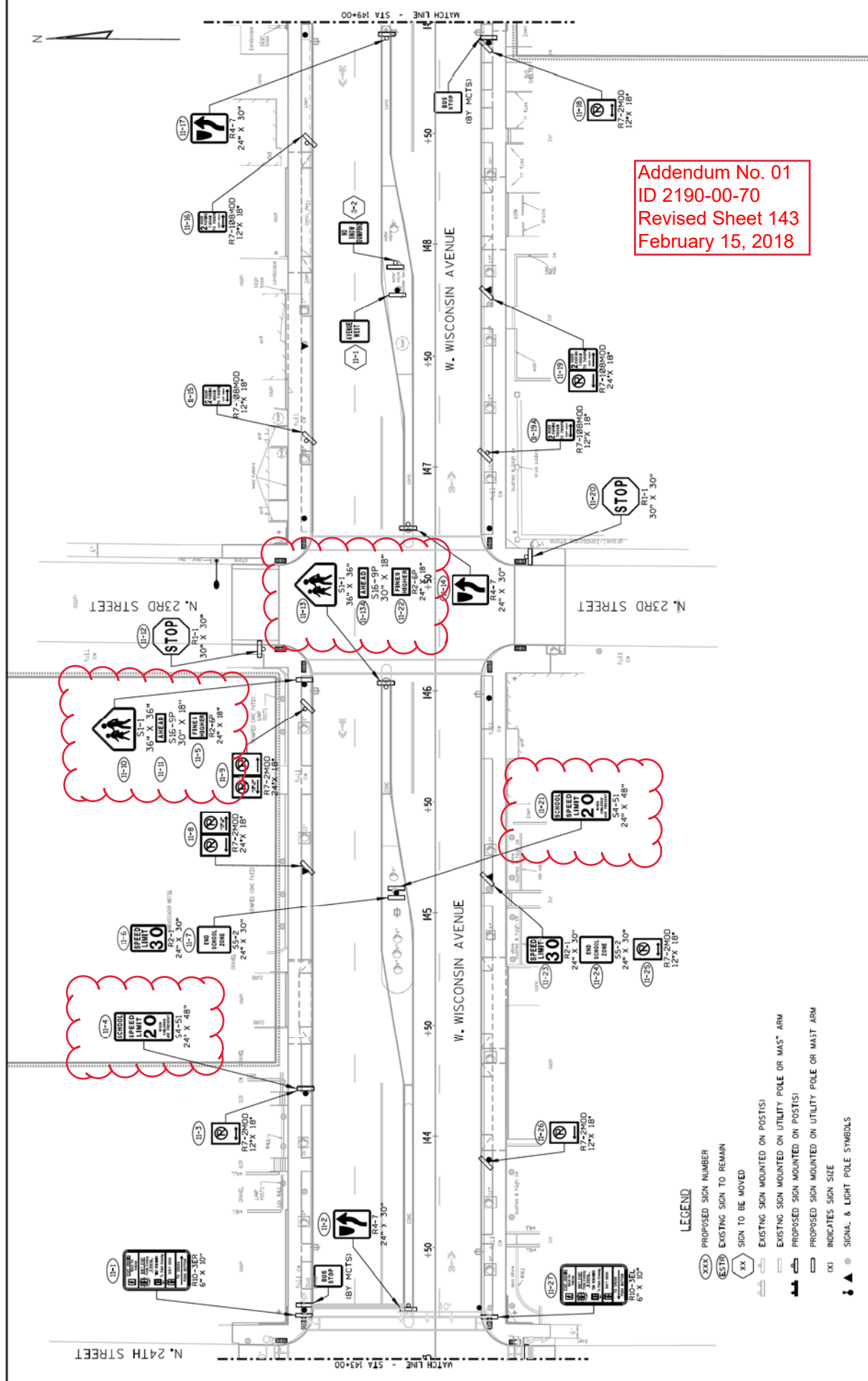
- LEGEND**
- XXX PROPOSED SIGN NUMBER
 - ESTR EXISTING SIGN TO REMAIN
 - XX SIGN TO BE MOVED
 - EXISTING SIGN MOUNTED ON POST(S)
 - EXISTING SIGN MOUNTED ON UTILITY POLE OR MAST ARM
 - PROPOSED SIGN MOUNTED ON POST(S)
 - PROPOSED SIGN MOUNTED ON UTILITY POLE OR MAST ARM
 - (X) INDICATES SIGN SIZE
 - ▲ SIGNAL & LIGHT POLE SYMBOLS



Addendum No. 01
 ID 2190-00-70
 Revised Sheet 141
 February 15, 2018



Addendum No. 01
 ID 2190-00-70
 Revised Sheet 142
 February 15, 2018

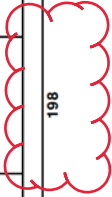


Addendum No. 01
 ID 2190-00-70
 Revised Sheet 143
 February 15, 2018

- LEGEND**
- (XX) PROPOSED SIGN NUMBER
 - (ESTR) EXISTING SIGN TO REMAIN
 - (XX) SIGN TO BE MOVED
 - EXISTING SIGN MOUNTED ON POST(S)
 - EXISTING SIGN MOUNTED ON UTILITY POLE OR MAST ARM
 - PROPOSED SIGN MOUNTED ON POST(S)
 - PROPOSED SIGN MOUNTED ON UTILITY POLE OR MAST ARM
 - (X) INDICATES SIGN SIZE
 - ▲ ○ ● SIGNAL & LIGHT POLE SYMBOLS

TYPE II SIGNS

SIGN NO.	LOCATION	STATION	SIGN CODE	MESSAGE	SIZE	FOR INFORMATION ONLY			INSTALL CITY FURNISHED SIGN EACH	REMARKS	
						CITY FURNISHED POSTS 14 FT EACH	CITY FURNISHED POSTS 16 FT EACH	CITY FURNISHED POSTS 18 FT EACH			
12-21	WISC. AVE	151+92	RT W16-7L		24 X 12	-	-	2.0	1	ATTACH TO LIGHT POLE	
12-22	WISC. AVE	151+92	RT R7-108MOD WITH R7-2MOD	BETWEEN SIGNS, LA; 2 HOUR, 7:00 AM TO 7:00 PM, EXCEPT SUNDAY, RA	24 X 18	-	-	3.0	1	ATTACH TO LIGHT POLE	
12-23	WISC. AVE	151+12	RT R7-108MOD	2 HOUR, 7:00 AM TO 7:00 PM, EXCEPT SUNDAY, DA	12 X 18	-	-	1.5	1	ATTACH TO LIGHT POLE	
12-24	WISC. AVE	149+76	RT R7-108MOD WITH R7-2MOD	2 HOUR, 7:00 AM TO 7:00 PM, EXCEPT SUNDAY, LA; BUS STOP, RA	24 X 18	1	-	3.0	1	-	
13-1	WISC. AVE	155+34	LT R7-2MOD	LA, BUS STOP; RA	24 X 18	1	-	3.0	1	-	
13-2	WISC. AVE	155+69	LT R7-2MOD	DA	12 X 18	-	-	1.5	1	ATTACH TO LIGHT POLE	
13-3	WISC. AVE	155+87	LT R4-7		24 X 30	-	-	5.0	1	-	
13-4	WISC. AVE	156+64	LT R4-7		24 X 30	1	-	5.0	1	-	
13-5	WISC. AVE	156+70	LT R7-2MOD	DA	12 X 18	-	-	1.5	1	ATTACH TO LIGHT POLE	
13-6	WISC. AVE	156+49	RT R1-1		30 X 30	1	-	6.3	1	-	
13-7	WISC. AVE	155+03	RT R7-108MOD WITH R7-2MOD	BUS STOP, LA; 2 HOUR, 7:00 AM TO 7:00 PM, EXCEPT SUNDAY, RA	24 X 18	1	-	3.0	1	-	
TOTAL						56	14	12	836.4	198	



Addendum No. 01
 ID 2190-00-70
 Revised Sheet 358
 February 15, 2018



Proposal Schedule of Items

Proposal ID: 20180313017 Project(s): 2190-00-70, 2190-00-71

Federal ID(s): WISC 2018146, WISC 2018147

SECTION: 0001 Roadway Items

Alt Set ID: Alt Mbr ID:

Proposal Line Number	Item ID Description	Approximate Quantity and Units	Unit Price	Bid Amount
0276	SPV.0060 Special 002. Installing City Furnished Signs	262.000 EACH	_____.	_____.
0278	SPV.0060 Special 003. Marking Symbol Preformed Plastic	4.000 EACH	_____.	_____.
0280	SPV.0060 Special 004. Marking Arrow Preformed Plastic	8.000 EACH	_____.	_____.
0282	SPV.0060 Special 005. Marking Word Preformed Plastic	4.000 EACH	_____.	_____.
0284	SPV.0060 Special 006. Woods Purple Aster #1 CG	72.000 EACH	_____.	_____.
0286	SPV.0060 Special 007. Russian Sage #1 CG	12.000 EACH	_____.	_____.
0288	SPV.0060 Special 008. Shasta Daisy Becky #1 CG	24.000 EACH	_____.	_____.
0290	SPV.0060 Special 009. Cloud Nine Switchgrass #1 CG	14.000 EACH	_____.	_____.
0292	SPV.0060 Special 010. Catmint Blue Wonder #1 CG	120.000 EACH	_____.	_____.
0294	SPV.0060 Special 011. Karl Forester Grass #1 CG	144.000 EACH	_____.	_____.
0296	SPV.0060 Special 012. Day Lilies #1 CG	96.000 EACH	_____.	_____.
0298	SPV.0060 Special 013. Zagreb Coreopsis #1 CG	48.000 EACH	_____.	_____.
0300	SPV.0060 Special 014. Signature Bed	3.000 EACH	_____.	_____.
0302	SPV.0060 Special 016. Furnish and Install Radar Vehicle Sensing Device	1.000 EACH	_____.	_____.
0304	SPV.0060 Special 017. Adjusting Water Boxes	139.000 EACH	_____.	_____.