



Wisconsin Department of Transportation

March 6, 2018

Division of Transportation Systems Development

Bureau of Project Development
4802 Sheboygan Avenue, Rm 601
P O Box 7916
Madison, WI 53707-7916

Telephone: (608) 266-1631
Facsimile (FAX): (608) 266-8459

NOTICE TO ALL CONTRACTORS:

Proposal #18: 2200-14-70, WISC2018 148
East/West Wells Street
6th Street to Broadway
USH 18
Milwaukee County

Letting of March 13, 2018

This is Addendum No. 02, which provides the following:

Special Provisions:

Revised Special Provisions	
Article No.	Description
3.	Prosecution and Progress

Plan Sheets:

Revised Plan Sheets	
Plan Sheet	Plan Sheet Title (brief description of changes to sheet)
28	Construction Details (Note about construction change to 2 nd Street & Plankinton Avenue)
167	Plan (Note about construction change to 2 nd Street & Plankinton Avenue)
169	Plan (Note about construction change to 2 nd Street & Plankinton Avenue)
175	Plan (Note about construction change to 2 nd Street & Plankinton Avenue)
177	Plan (Note about construction change to 2 nd Street & Plankinton Avenue)

The responsibility for notifying potential subcontractors and suppliers of these changes remains with the prime contractor.

Sincerely,

Mike Coleman

Proposal Development Specialist
Proposal Management Section

ADDENDUM NO. 02

2200-14-70

March 6, 2018

Special Provisions

3. Prosecution and Progress.

Add the following after paragraph seven:

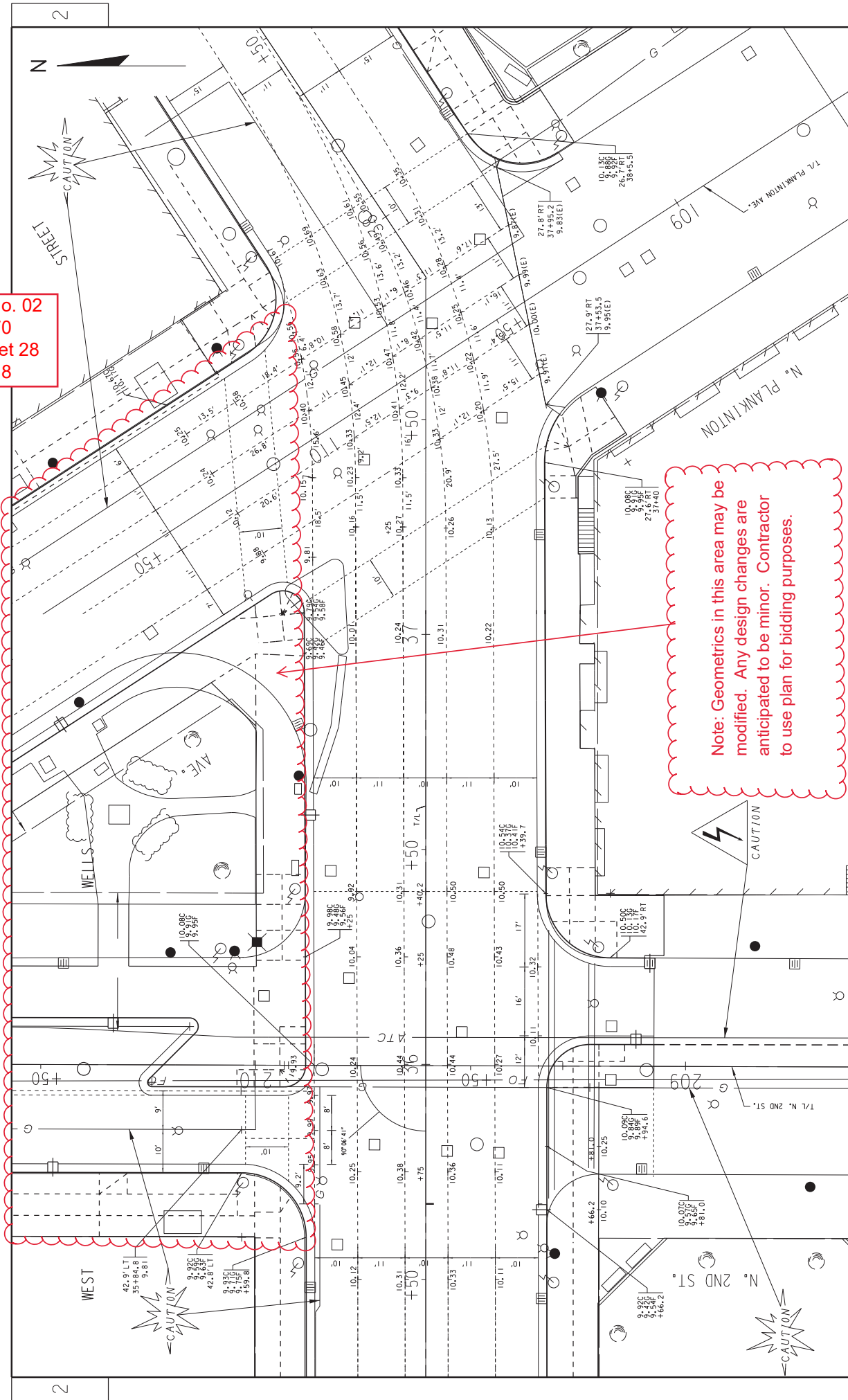
Contract work on North 2nd Street from West Wells Street to North Plankinton Avenue and on North Plankinton Avenue from West Wells Street to North 2nd Street has the potential to be geometrically modified after the project is LET. Any potential design modifications would come from the engineer in charge, are anticipated to be minor, and are not anticipated to impact project quantities or unit prices. The contractor is to use the LET plan for bidding purposes.

Plan Sheets

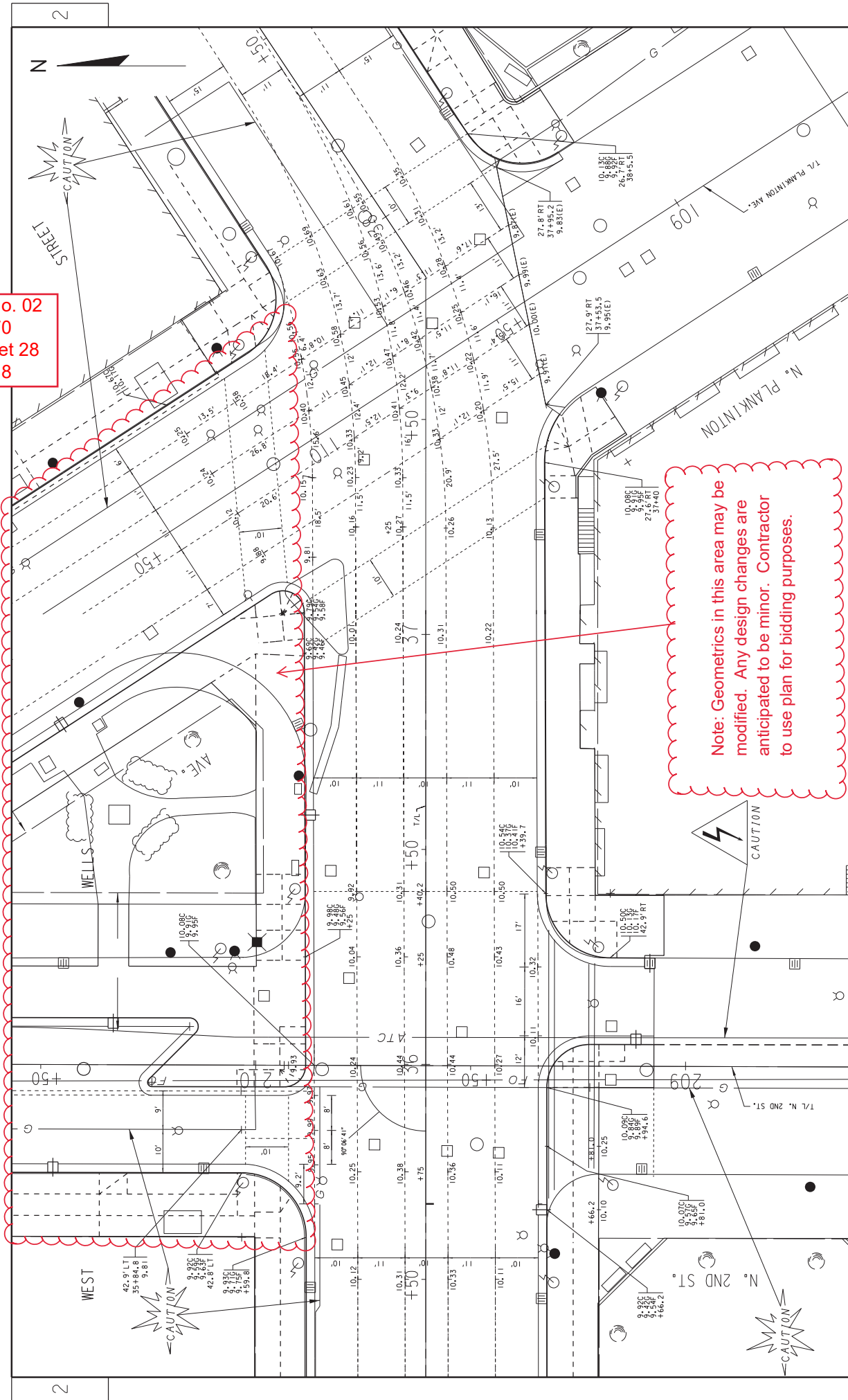
The following 8½ x 11-inch sheets are attached and made part of the plans for this proposal:
Revised: 28, 167, 169, 175, and 177.

END OF ADDENDUM

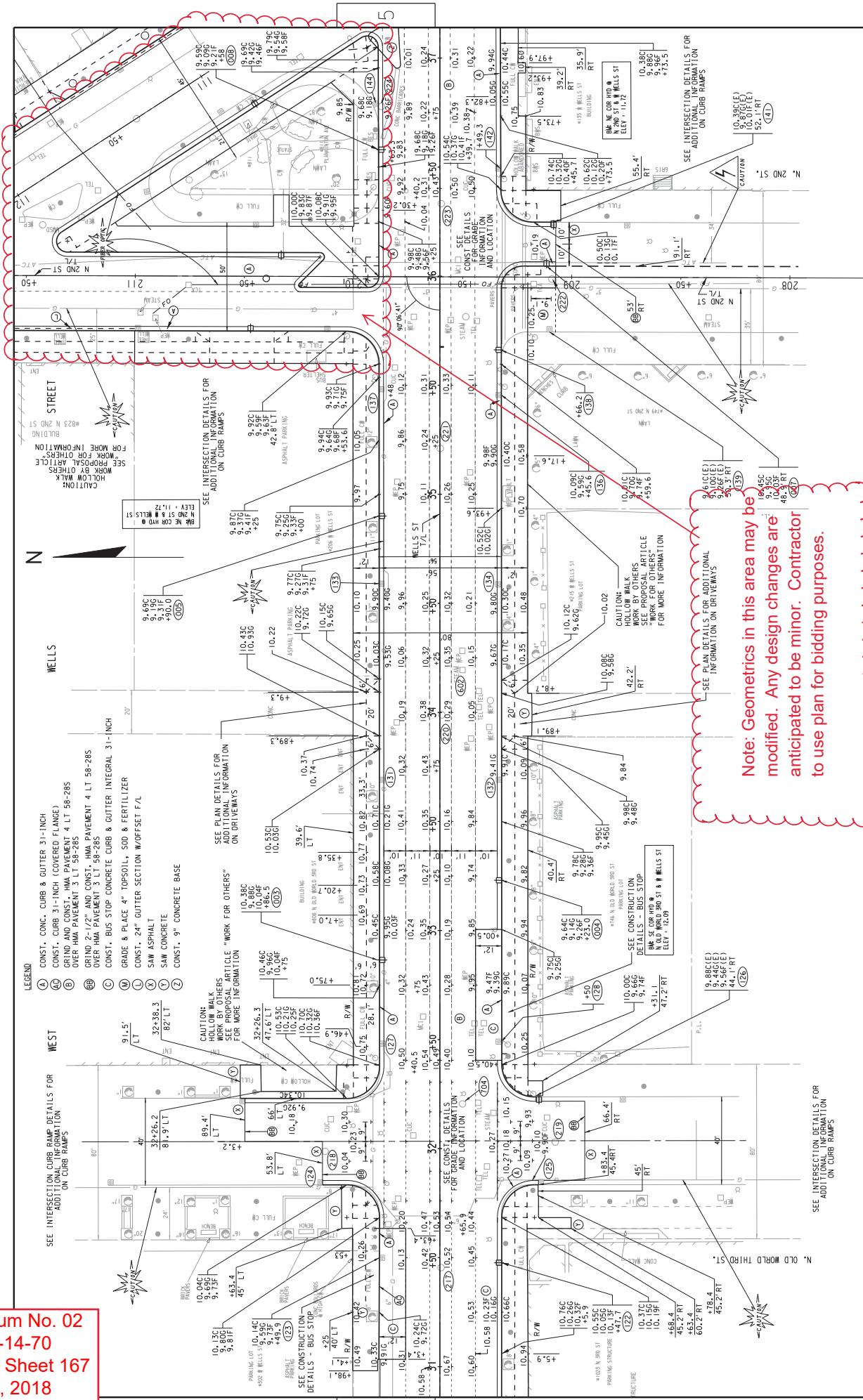
Addendum No. 02
ID 2200-14-70
Revised Sheet 28
March 6, 2018



Note: Geometrics in this area may be modified. Any design changes are anticipated to be minor. Contractor to use plan for bidding purposes.



Addendum No. 02
 ID 2200-14-70
 Revised Sheet 167
 March 6, 2018

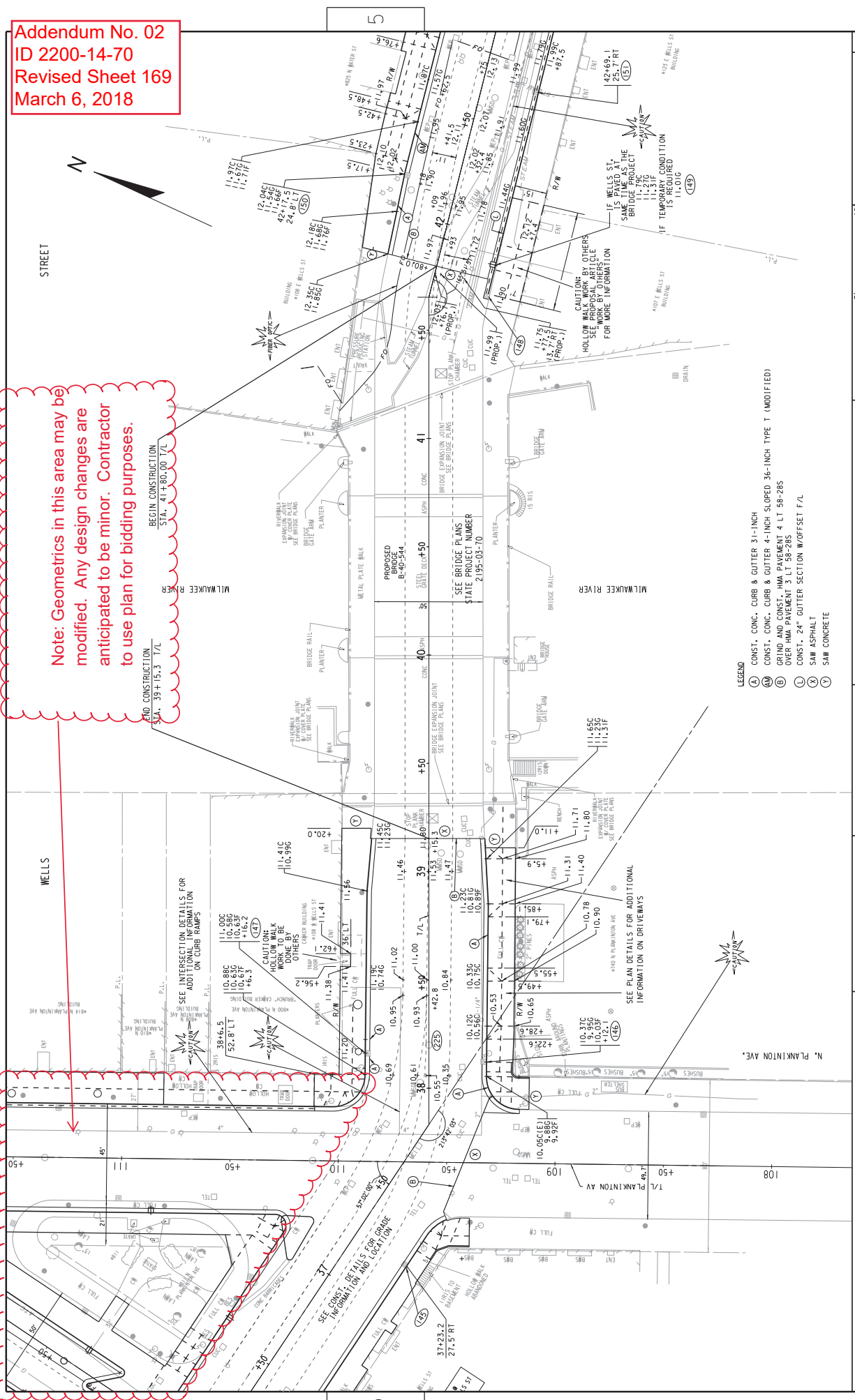


Note: Geometrics in this area may be modified. Any design changes are anticipated to be minor. Contractor to use plan for bidding purposes.

- LEGEND**
- (A) CONST. CONC. CURB & GUTTER 31-INCH
 - (B) CONST. CURB 31-INCH (COVERED FLANGE)
 - (C) GRIND AND CONST. HMA PAVEMENT 4 LT 58-285
 - (D) GRIND HMA PAVEMENT 3 LT 58-285
 - (E) GRIND 2-1/2" AND CONST. HMA PAVEMENT 4 LT 58-285
 - (F) OVER HMA PAVEMENT 3 LT 58-285
 - (G) CONST. BUS STOP CONCRETE CURB & GUTTER INTEGRAL 31-INCH
 - (H) GRADE & PLACE 4" TOPSOIL, SOD & FERTILIZER
 - (I) CONST. 24" GUTTER SECTION W/OFFSET F/L
 - (J) SAW ASPHALT
 - (K) SAW CONCRETE
 - (L) CONST. 9" CONCRETE BASE

Addendum No. 02
ID 2200-14-70
Revised Sheet 169
March 6, 2018

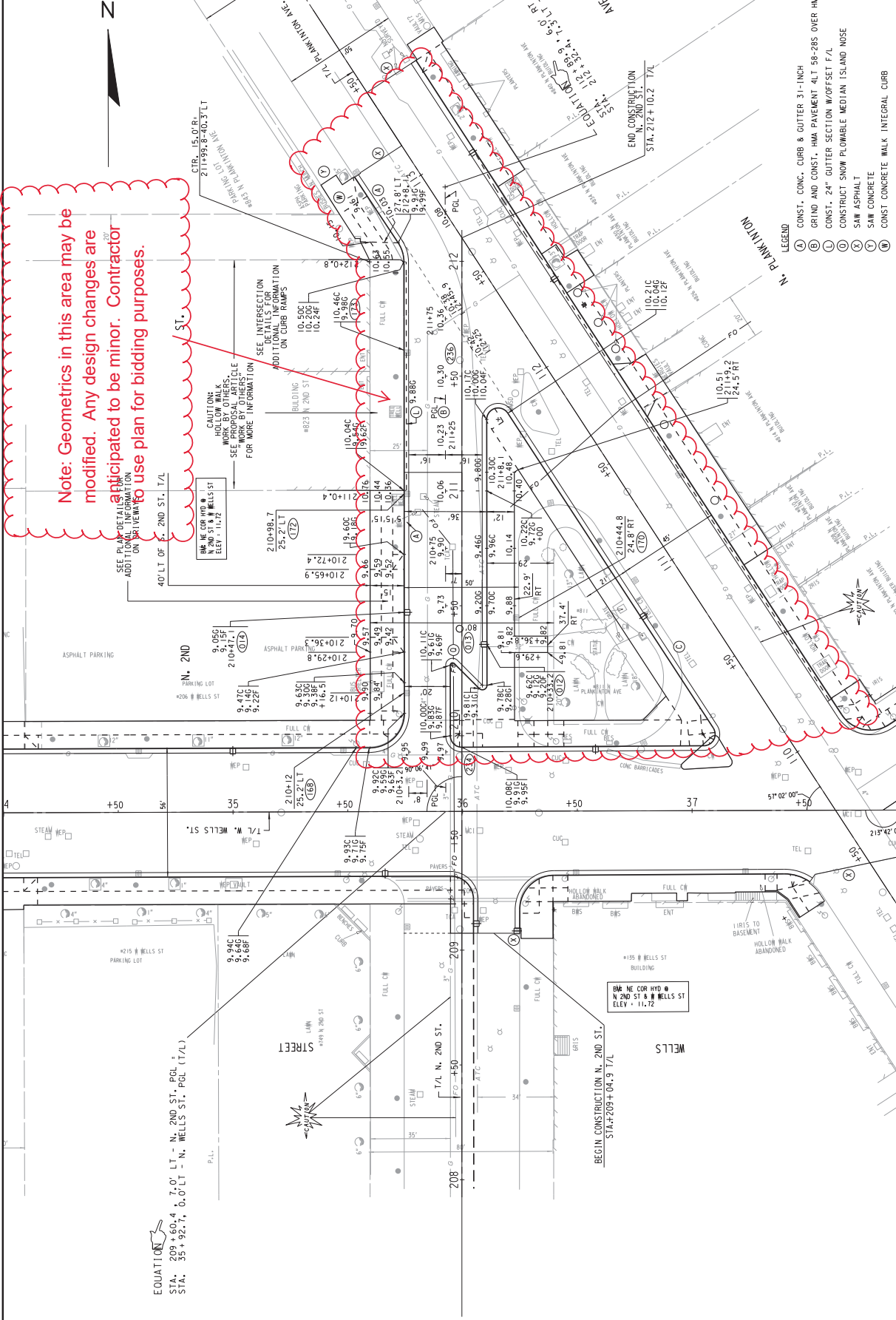
Note: Geometrics in this area may be modified. Any design changes are anticipated to be minor. Contractor to use plan for bidding purposes.



- LEGEND
- (A) CONST. CONC. CURB & GUTTER 31-INCH
 - (AV) CONST. CONC. CURB & GUTTER 4-INCH SLOPED 36-INCH TYPE T (MODIFIED)
 - (E) GRIND AND CONST. HMA PAVEMENT 4 LT 58-285 OVER HMA PAVEMENT 3 LT 58-285
 - (L) CONST. 24" GUTTER SECTION W/OFFSET F/L
 - (X) SAW ASPHALT
 - (Y) SAW CONCRETE

FILENAME: W:\SPRWELLS_6TH-PROSPECT\317-43.DGN

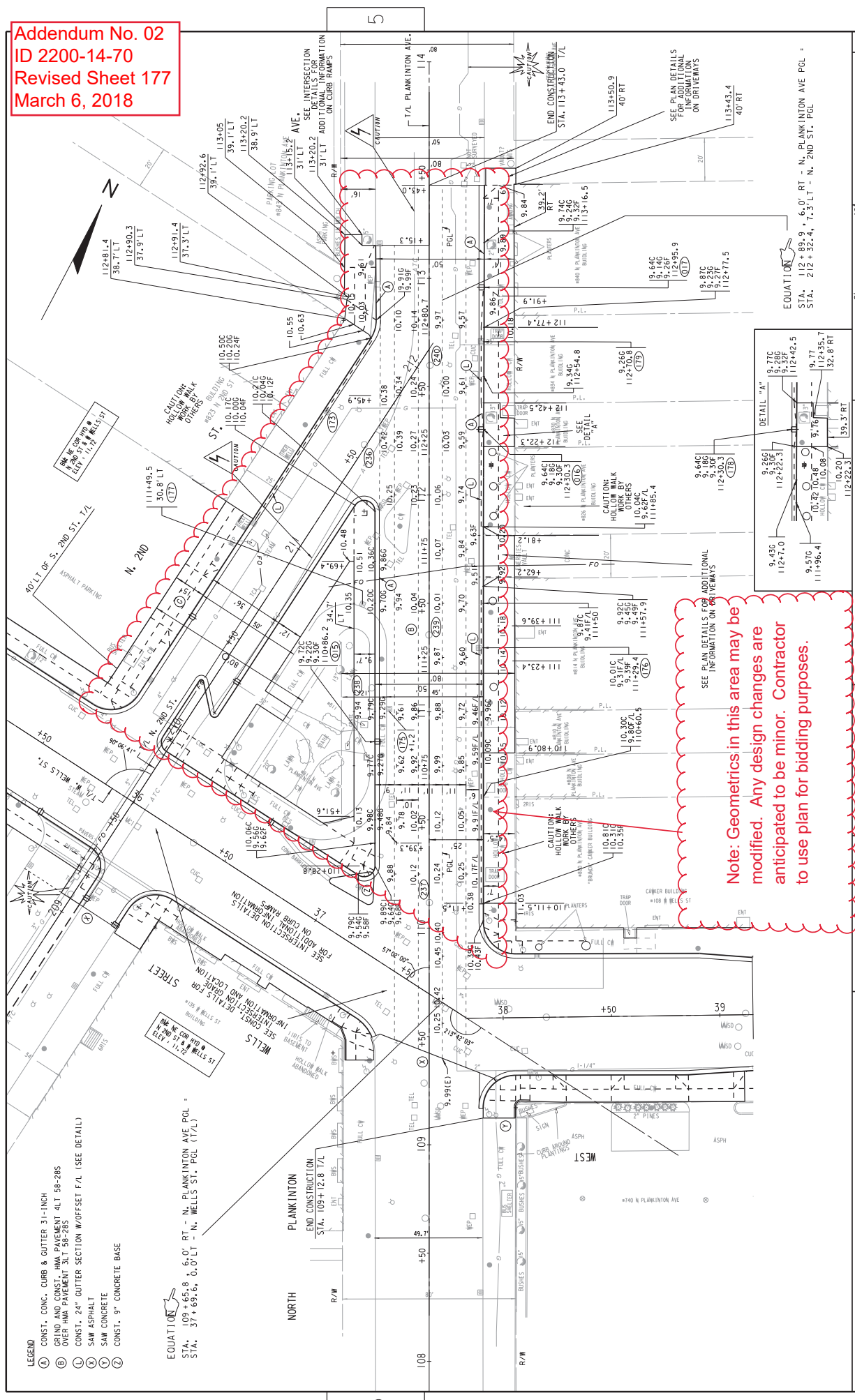
Addendum No. 02
 ID 2200-14-70
 Revised Sheet 175
 March 6, 2018



Note: Geometrics in this area may be modified. Any design changes are anticipated to be minor. Contractor to use plan for bidding purposes.

- LEGEND
- (A) CONST. CONC. CURB & GUTTER 31-INCH
 - (B) GRIND AND CONST. HMA PAVEMENT 4LT 58-285 OVER HMA PAVEMENT 3LT 58-285
 - (C) CONST. 24" GUTTER SECTION W/OFFSET F/L
 - (D) CONSTRUCT SNOW PLOMBABLE MEDIAN ISLAND NOSE
 - (X) SAW ASPHALT
 - (Y) SAW CONCRETE
 - (W) CONST CONCRETE WALK INTEGRAL CURB

Addendum No. 02
 ID 2200-14-70
 Revised Sheet 177
 March 6, 2018



Note: Geometrics in this area may be modified. Any design changes are anticipated to be minor. Contractor to use plan for bidding purposes.

- LEGEND
- ④ CONST. CONC. CURB & GUTTER 31"-INCH
 - ⑤ GRIND AND CONST. HMA PAVEMENT 4LT 58-285
 - ⑥ OVER HMA PAVEMENT 3LT 58-285
 - ⑦ CONST. 24" GUTTER SECTION W/OFFSET F/L (SEE DETAIL)
 - ⑧ SAW ASPHALT
 - ⑨ SAW CONCRETE
 - ⑩ CONST. 9" CONCRETE BASE

EQUATION
 STA. 109+65.8 + 6.0' RT - N. PLANKINTON AVE. PCL +
 STA. 31+65.6, 0.0' LT - N. WELLS ST. PCL (T/L)

