



Wisconsin Department of Transportation

May 9, 2024

Division of Transportation Systems Development

Bureau of Project Development
4822 Madison Yards Way, 4th Floor South
Madison, WI 53705

Telephone: (608) 266-1631
Facsimile (FAX): (608) 266-8459

NOTICE TO ALL CONTRACTORS:

Proposal #15: 1130-66-76
Appleton – De Pere
CTH N Intchg
CTH N
Outagamie County

Letting of May 14, 2024

This is Addendum No. 02, which provides for the following:

Special Provisions:

| Revised Special Provisions | |
|----------------------------|--|
| Article No. | Description |
| 1.7 | Notice to Contractor, Safety and Personnel Identification Program. |

Schedule of Items:

| Revised Bid Item Quantities | | | | | |
|-----------------------------|---------------------------------------|------|----------------------------------|------------------------------|-------------------------------|
| Bid Item | Item Description | Unit | Proposal Total Prior to Addendum | Proposal Quantity Change (-) | Proposal Total After Addendum |
| 205.0150 | Removing Curb & Gutter | LF | 331 | 18 | 349 |
| 204.0155 | Removing Concrete Sidewalk | SY | 530 | 9 | 539 |
| 415.1100 | Concrete Pavement HES 10-Inch | SY | 822 | 27 | 849 |
| 460.6224 | HMA Pavement 4 MT 58-28 S | Ton | 31 | -4 | 27 |
| 601.0405 | Concrete Curb & Gutter 18-Inch Type A | LF | 2,256 | 5 | 2,261 |
| 601.0409 | Concrete Curb & Gutter 30-Inch Type A | LF | 2,227 | 5 | 2,232 |
| 602.0405 | Concrete Sidewalk 4-Inch | SF | 13,966 | 60 | 14,026 |
| 690.0150 | Sawing Asphalt | LF | 241 | 65 | 306 |

| Added Bid Item Quantities | | | | | |
|---------------------------|------------------------------|------|----------------------------------|----------------|-------------------------------|
| Bid Item | Item Description | Unit | Proposal Total Prior to Addendum | Quantity Added | Proposal Total After Addendum |
| 405.0100 | Coloring Concrete WisDOT Red | CY | 0 | 36 | 36 |

Plan Sheets:

| Revised Plan Sheets | |
|----------------------------|---|
| Plan Sheet | Plan Sheet Title (brief description of changes to sheet) |
| 7 | Typical Sections (updated station ranges) |
| 19-20 | Plan Details (identifying locations for colored concrete and updated sidewalk crossing) |
| 29 | Paving Grades (updated stations and offsets for south limits) |
| 39 | Curb Ramp Details (Updated curb ramp design) |
| 41 | Curb Ramp Details (Updated curb ramp design) |
| 49 | Erosion Control Permanent (updated sidewalk crossing and slope intercepts) |
| 59 | Erosion Control Temporary (updated sidewalk crossing and slope intercepts) |
| 85 | Pavement Marking (updated sidewalk crossing markings) |
| 105-107 | Traffic Control (updated work area limits) |
| 130 | Miscellaneous Quantities (updated tables) |
| 132-133 | Miscellaneous Quantities (updated tables, additional items) |
| 143 | Miscellaneous Quantities (updated tables) |
| 164 | Plan Profile (updated curb ramp design) |

| Added Plan Sheets | |
|--------------------------|---|
| Plan Sheet | Plan Sheet Title (brief description of why sheet was added) |
| 12A | Construction Detail – Crosswalk Detail (shows limits of colored concrete in crosswalks) |

The responsibility for notifying potential subcontractors and suppliers of these changes remains with the prime contractor.

Sincerely,

Mike Coleman

Proposal Development Specialist
Proposal Management Section

ADDENDUM NO. 02

1130-66-76

May 9, 2024

Special Provisions

1.7 Notice to Contractor, Safety and Personnel Identification Program.

Replace entire article language with the following:

All workers shall wear OSHA and ANSI compliant safety head protection, safety glasses, safety-toe protective footwear, and safety vest at all times while within the project footprint. All workers shall wear OSHA and ANSI compliant safety pants within the right of way of a roadway with a posted speed limit of 50 mph or greater unless separated from traffic by positive protection (e.g., temporary concrete barrier). All workers shall wear OSHA and ANSI compliant safety pants from dusk to dawn.

The prime contractor shall provide a copy of their current Company Safety Plans to the department 7 days prior to the preconstruction meeting. All workers shall comply with the Safety Plans of their employer.

All contractor personnel will be required to register in the program prior to performing work. Valid photo identification which includes unexpired driver's license, government issued identification cards, military identification, passport, or other identification approved by the department will be required to register. All personnel registered will be issued a hard hat sticker with an identification number by the department. Stickers shall be placed in a visible location on the hard hat. Register at the IH 41 corridor field office during normal business hours.

Noncompliance with this contract provision may result in removal of contractor personnel from the project or suspension of work according to standard spec 108.6 applicable under the contract.

ner41-108 (05072024)

Schedule of Items

Attached, dated May 9, 2024, are the revised Schedule of Items Pages 1 – 15.

Plan Sheets

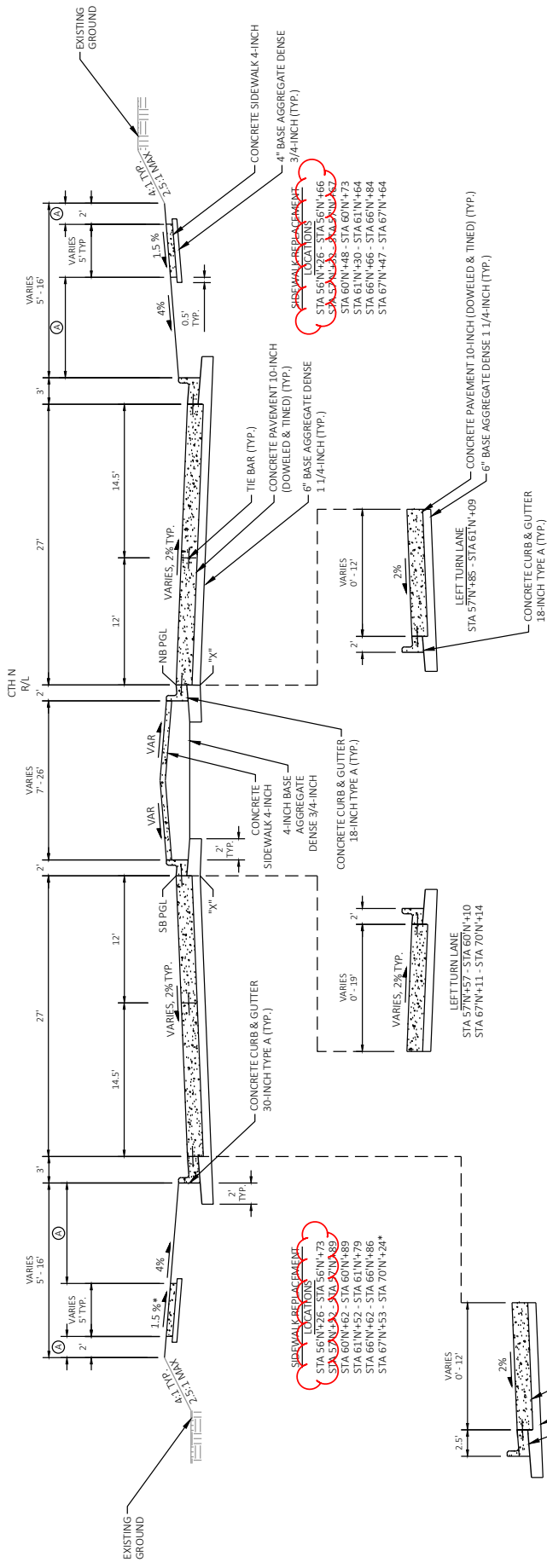
The following 8½ x 11-inch sheets are attached and made part of the plans for this proposal:

Revised: 7, 19-20, 29, 39, 41, 49, 59, 85, 105-107, 130, 132-133, 143, 164

Added: 12A

END OF ADDENDUM

TOPSOIL SEEDING MIXTURE NO. 30
EROSION MAT URBAN CLASS I TYPE B, & FERTILIZER TYPE B



SIDEWALK REPLACEMENT LOCATIONS
 STA 56N+26 - STA 56N+73
 STA 57N+32 - STA 57N+89
 STA 61N+42 - STA 61N+79
 STA 66N+62 - STA 66N+86
 STA 67N+53 - STA 70N+24*

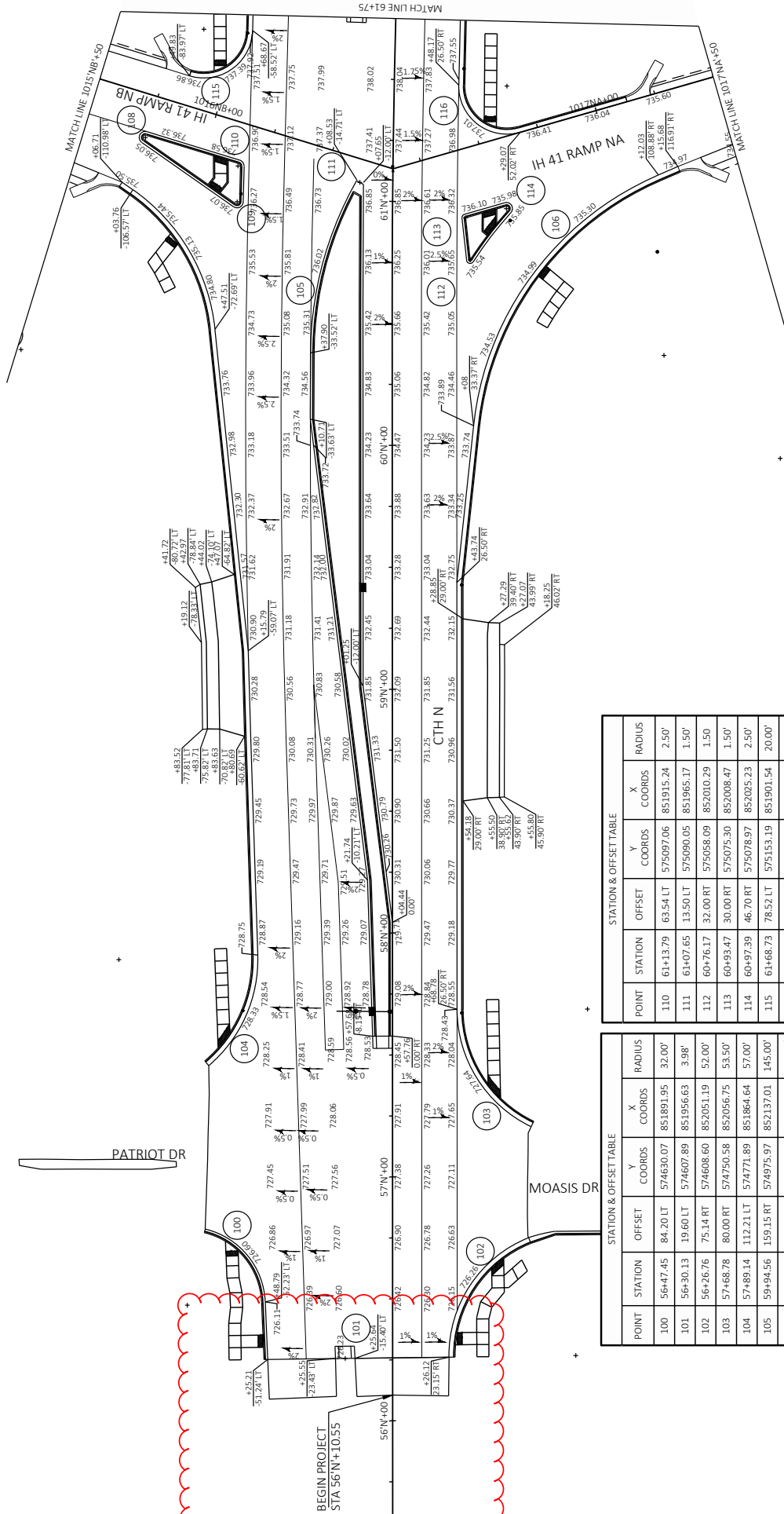
FINISHED TYPICAL SECTION CTH N
 STA 56N+25.83 - STA 61N+01.40
 STA 66N+20.31 - STA 70N+14.45

Addendum No. 02
ID 1130-66-76
Revised Sheet 7
May 9, 2024

NB PGL = POINT REFERRED TO ON NORTHBOUND PROFILE
 SB PGL = POINT REFERRED TO ON SOUTHBOUND PROFILE
 *X = POINT REFERRED TO ON CROSS SECTIONS

* SIDEWALK SLOPES AWAY FROM CTH N WITHIN THIS STATION RANGE

| | | | | |
|--|-------------------------------|-------------------------|-----------------------------------|-------------------------|
| PROJECT NO: 1130-66-76 | HWY: CTH N | COUNTY: OUTAGAMIE | FINISHED TYPICAL SECTIONS - CTH N | SHEET 7 |
| FILE NAME: C:\Users\W505\OneDrive\Projects\1130-66-76\PROJECT FILES\ISS\GRI\11306676\05\11306676\02\001\15-CTH N.DWG | PILOT DATE: 5/9/2024 12:59 PM | PILOT BY: AARON SCHRAMM | PILOT NAME: | PILOT SCALE: 1 IN=10 FT |
| LAYOUT NAME: 09_SIT | | | | WISDOT/CARDS SHEET 42 |



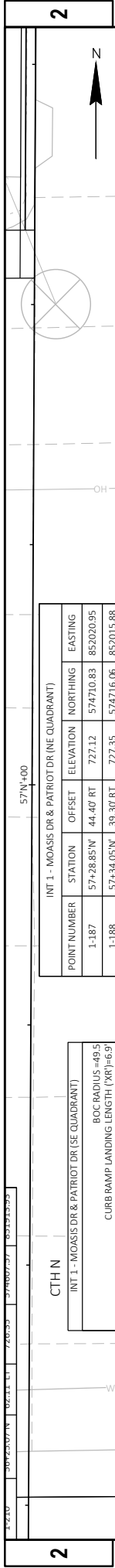
STATION & OFFSET TABLE

| POINT | STATION | OFFSET | Y COORDS | X COORDS | RADIUS |
|-------|----------|----------|-----------|-----------|--------|
| 110 | 61+13.79 | 63.54 LT | 575097.06 | 851915.24 | 2.50' |
| 111 | 61+07.65 | 13.50 LT | 575090.05 | 851965.17 | 1.50' |
| 112 | 60+76.17 | 32.00 RT | 575058.09 | 852010.29 | 1.50' |
| 113 | 60+93.47 | 30.00 RT | 575075.30 | 852008.47 | 1.50' |
| 114 | 60+97.39 | 46.70 RT | 575078.97 | 852025.23 | 2.50' |
| 115 | 61+68.73 | 78.52 LT | 575153.19 | 851901.54 | 20.00' |
| 116 | 61+48.17 | 46.25 RT | 575129.22 | 852025.72 | 19.75' |

STATION & OFFSET TABLE

| POINT | STATION | OFFSET | Y COORDS | X COORDS | RADIUS |
|-------|----------|-----------|-----------|-----------|---------|
| 100 | 56+47.45 | 84.20 LT | 574630.07 | 851891.95 | 32.00' |
| 101 | 56+30.13 | 19.60 LT | 574607.89 | 851956.63 | 3.98' |
| 102 | 56+26.76 | 75.14 RT | 574608.60 | 852051.19 | 52.00' |
| 103 | 57+68.78 | 80.00 RT | 574750.58 | 852056.75 | 53.50' |
| 104 | 57+89.14 | 112.21 LT | 574771.89 | 851864.64 | 57.00' |
| 105 | 59+94.56 | 159.15 RT | 574975.97 | 852137.01 | 145.00' |
| 106 | 60+36.81 | 111.48 RT | 575018.46 | 852089.55 | 126.50' |
| 107 | 60+39.28 | 152.27 LT | 575022.23 | 851825.82 | 80.00' |
| 108 | 61+24.74 | 101.66 LT | 575108.90 | 851877.33 | 2.50' |
| 109 | 60+99.29 | 63.75 LT | 575082.36 | 851914.80 | 2.50' |

PROJECT NO: 1130-66-76
 COUNTY: OUTAGAMIE
 HWY: CTH N
 SHEET 29
 PAVING GRADES
 FILE NAME: C:\Users\wsc\Documents\1130-66-76\PROJECT FILES\GN11306676\06SHEETS\11306676\02-207-PON.DWG
 PLOT DATE: 5/9/2024 12:48 PM
 PLOT BY: AARON SCHRAMM
 PLOT NAME: 1 IN/10 FT
 PLOT SCALE: 1 IN/10 FT
 WKID/CARDS SHEET 42
 Addendum No. 02
 ID 1130-66-76
 Revised Sheet 29
 May 9, 2024



| INT 1 - MOASIS DR & PATRIOT DR (SE QUADRANT) | | | | | | | | | | | |
|--|------------|-----------|-----------|-----------|-----------|--------------|------------|-----------|-----------|-----------|-----------|
| POINT NUMBER | STATION | OFFSET | ELEVATION | NORTHING | EASTING | POINT NUMBER | STATION | OFFSET | ELEVATION | NORTHING | EASTING |
| 1-152 | 56+31.12'N | 23.32' RT | 725.83 | 574613.21 | 851999.40 | 1-165 | 56+31.16'N | 26.60' RT | 725.77 | 574613.23 | 852002.67 |
| 1-153 | 56+36.13'N | 23.99' RT | 725.91 | 574618.21 | 852000.09 | 1-166 | 56+63.97'N | 45.61' RT | 726.19 | 574645.94 | 852021.84 |
| 1-154 | 56+64.23'N | 30.08' RT | 726.26 | 574646.24 | 852015.32 | 1-167 | 56+31.26'N | 34.55' RT | 726.32 | 574613.29 | 852010.62 |
| 1-155 | 56+65.62'N | 40.58' RT | 726.28 | 574647.62 | 852016.82 | 1-168 | 56+36.26'N | 34.51' RT | 726.39 | 574618.29 | 852010.61 |
| 1-156 | 56+69.49'N | 45.51' RT | 726.24 | 574651.47 | 852021.77 | 1-169 | 56+41.75'N | 34.49' RT | 726.24 | 574623.79 | 852010.61 |
| 1-157 | 56+31.14'N | 25.33' RT | 725.75 | 574613.22 | 852001.41 | 1-169A | 56+42.43'N | 34.48' RT | 726.24 | 574624.47 | 852010.61 |
| 1-158 | 56+36.15'N | 26.03' RT | 725.83 | 574618.23 | 852002.13 | 1-170 | 56+31.18'N | 28.60' RT | 725.91 | 574613.24 | 852004.67 |
| 1-159 | 56+62.94'N | 40.63' RT | 726.17 | 574644.95 | 852016.86 | 1-171 | 56+36.18'N | 28.53' RT | 725.98 | 574618.24 | 852004.64 |
| 1-160 | 56+67.07'N | 45.56' RT | 726.14 | 574649.05 | 852021.80 | 1-172 | 56+48.81'N | 36.08' RT | 726.24 | 574630.83 | 852012.24 |
| 1-161 | 56+31.15'N | 25.84' RT | 725.76 | 574613.22 | 852001.91 | 1-173 | 56+54.47'N | 40.79' RT | 726.30 | 574636.47 | 852016.98 |
| 1-162 | 56+36.16'N | 26.54' RT | 725.84 | 574618.23 | 852002.64 | 1-174 | 56+59.47'N | 40.70' RT | 726.22 | 574641.47 | 852016.91 |
| 1-163 | 56+62.26'N | 40.64' RT | 726.18 | 574644.26 | 852016.87 | 1-175 | 56+59.56'N | 45.70' RT | 726.26 | 574641.54 | 852021.91 |
| 1-164 | 56+66.45'N | 45.56' RT | 726.15 | 574648.43 | 852021.80 | 1-176 | 56+62.55'N | 49.10' RT | 726.47 | 574644.51 | 852025.32 |

| INT 1 - MOASIS DR & PATRIOT DR (SE QUADRANT) | | | | | | | | | | | |
|--|------------|-----------|-----------|-----------|-----------|--------------|------------|-----------|-----------|-----------|-----------|
| POINT NUMBER | STATION | OFFSET | ELEVATION | NORTHING | EASTING | POINT NUMBER | STATION | OFFSET | ELEVATION | NORTHING | EASTING |
| 1-187 | 57+28.85'N | 44.40' RT | 727.12 | 574701.83 | 852020.95 | 1-177 | 56+65.95'N | 52.97' RT | 726.70 | 574647.89 | 852029.21 |
| 1-188 | 57+34.05'N | 39.30' RT | 727.35 | 574716.06 | 852015.88 | 1-178 | 56+31.32'N | 39.54' RT | 726.47 | 574618.26 | 852015.64 |
| 1-189 | 57+31.61'N | 44.35' RT | 727.09 | 574713.59 | 852020.92 | 1-179 | 56+36.25'N | 39.54' RT | 726.47 | 574618.26 | 852015.64 |
| 1-190 | 57+37.29'N | 39.25' RT | 727.22 | 574719.30 | 852015.84 | 1-180 | 56+41.82'N | 39.49' RT | 726.31 | 574623.82 | 852015.61 |
| 1-191 | 57+32.32'N | 44.34' RT | 727.10 | 574714.30 | 852020.91 | 1-181 | 56+52.71'N | 45.82' RT | 726.32 | 574634.68 | 852022.00 |
| 1-192 | 57+38.14'N | 39.23' RT | 727.23 | 574720.15 | 852015.83 | 1-183 | 56+46.53'N | 40.69' RT | 726.32 | 574628.53 | 852016.84 |
| 1-193 | 57+35.23'N | 44.28' RT | 727.15 | 574717.21 | 852020.87 | 1-184 | 56+54.56'N | 45.79' RT | 726.33 | 574636.54 | 852021.97 |
| 1-194 | 57+41.70'N | 39.16' RT | 727.29 | 574723.70 | 852015.78 | 1-184A | 56+54.60'N | 47.62' RT | 726.54 | 574636.54 | 852021.97 |
| 1-195 | 57+41.79'N | 44.16' RT | 727.25 | 574723.77 | 852020.78 | 1-185 | 56+57.99'N | 51.48' RT | 726.54 | 574636.54 | 852021.97 |
| 1-196 | 57+47.70'N | 39.05' RT | 727.71 | 574729.70 | 852015.70 | 1-186 | 56+61.46'N | 55.30' RT | 726.80 | 574643.39 | 852031.52 |
| 1-197 | 57+47.79'N | 44.05' RT | 727.67 | 574729.77 | 852020.70 | 1-211 | 56+26.26'N | 34.57' RT | 726.35 | 574608.29 | 852010.61 |
| 1-198 | 57+52.69'N | 38.96' RT | 727.78 | 574734.70 | 852015.63 | 1-212 | 56+26.32'N | 39.53' RT | 726.46 | 574608.32 | 852015.58 |
| 1-199 | 57+52.79'N | 43.96' RT | 727.74 | 574734.77 | 852020.63 | | | | | | |
| 1-200 | 57+57.69'N | 38.87' RT | 728.19 | 574739.70 | 852015.56 | | | | | | |
| 1-201 | 57+57.79'N | 43.86' RT | 728.19 | 574739.77 | 852020.56 | | | | | | |
| 1-202 | 57+62.79'N | 43.77' RT | 728.65 | 574744.77 | 852020.49 | | | | | | |
| 1-203 | 57+67.88'N | 38.68' RT | 729.04 | 574749.69 | 852015.42 | | | | | | |
| 1-204 | 57+72.68'N | 38.59' RT | 729.10 | 574754.69 | 852015.35 | | | | | | |
| 1-204B | 57+67.77'N | 43.68' RT | 729.12 | 574749.76 | 852020.42 | | | | | | |
| 1-205 | 57+72.75'N | 43.59' RT | 729.19 | 574754.74 | 852020.36 | | | | | | |
| 1-205B | 57+72.75'N | 43.59' RT | 729.19 | 574754.74 | 852020.36 | | | | | | |

| INT 1 - MOASIS DR & PATRIOT DR (SE QUADRANT) | | | | | | | | | | | |
|--|------------|-----------|-----------|-----------|-----------|--------------|------------|-----------|-----------|-----------|-----------|
| POINT NUMBER | STATION | OFFSET | ELEVATION | NORTHING | EASTING | POINT NUMBER | STATION | OFFSET | ELEVATION | NORTHING | EASTING |
| 1-172 | 56+31.16'N | 26.60' RT | 725.77 | 574613.23 | 852002.67 | 1-187 | 57+28.85'N | 44.40' RT | 727.12 | 574701.83 | 852020.95 |
| 1-173 | 56+36.13'N | 23.99' RT | 725.91 | 574618.21 | 852000.09 | 1-188 | 57+34.05'N | 39.30' RT | 727.35 | 574716.06 | 852015.88 |
| 1-174 | 56+64.23'N | 30.08' RT | 726.26 | 574646.24 | 852015.32 | 1-189 | 57+31.61'N | 44.35' RT | 727.09 | 574713.59 | 852020.92 |
| 1-175 | 56+65.62'N | 40.58' RT | 726.28 | 574647.62 | 852016.82 | 1-190 | 57+37.29'N | 39.25' RT | 727.22 | 574719.30 | 852015.84 |
| 1-176 | 56+69.49'N | 45.51' RT | 726.24 | 574651.47 | 852021.77 | 1-191 | 57+32.32'N | 44.34' RT | 727.10 | 574714.30 | 852020.91 |
| 1-177 | 56+31.14'N | 25.33' RT | 725.75 | 574613.22 | 852001.41 | 1-192 | 57+38.14'N | 39.23' RT | 727.23 | 574720.15 | 852015.83 |
| 1-178 | 56+36.15'N | 26.03' RT | 725.83 | 574618.23 | 852002.13 | 1-193 | 57+35.23'N | 44.28' RT | 727.15 | 574717.21 | 852020.87 |
| 1-179 | 56+62.94'N | 40.63' RT | 726.17 | 574644.95 | 852016.86 | 1-194 | 57+41.70'N | 39.16' RT | 727.29 | 574723.70 | 852015.78 |
| 1-180 | 56+67.07'N | 45.56' RT | 726.14 | 574649.05 | 852021.80 | 1-195 | 57+41.79'N | 44.16' RT | 727.25 | 574723.77 | 852020.78 |
| 1-181 | 56+31.15'N | 25.84' RT | 725.76 | 574613.22 | 852001.91 | 1-196 | 57+47.70'N | 39.05' RT | 727.71 | 574729.70 | 852015.70 |
| 1-182 | 56+36.16'N | 26.54' RT | 725.84 | 574618.23 | 852002.64 | 1-197 | 57+47.79'N | 44.05' RT | 727.67 | 574729.77 | 852020.70 |
| 1-183 | 56+62.26'N | 40.64' RT | 726.18 | 574644.26 | 852016.87 | 1-198 | 57+52.69'N | 38.96' RT | 727.78 | 574734.70 | 852015.63 |
| 1-184 | 56+66.45'N | 45.56' RT | 726.15 | 574648.43 | 852021.80 | 1-199 | 57+52.79'N | 43.96' RT | 727.74 | 574734.77 | 852020.63 |

| INT 1 - MOASIS DR & PATRIOT DR (SE QUADRANT) | | | | | | | | | | | |
|--|------------|-----------|-----------|-----------|-----------|--------------|------------|-----------|-----------|-----------|-----------|
| POINT NUMBER | STATION | OFFSET | ELEVATION | NORTHING | EASTING | POINT NUMBER | STATION | OFFSET | ELEVATION | NORTHING | EASTING |
| 1-185 | 56+57.99'N | 51.48' RT | 726.54 | 574636.54 | 852021.97 | 1-201 | 57+57.79'N | 43.86' RT | 728.19 | 574739.77 | 852015.56 |
| 1-186 | 56+61.46'N | 55.30' RT | 726.80 | 574643.39 | 852031.52 | 1-202 | 57+62.79'N | 43.77' RT | 728.65 | 574744.77 | 852020.49 |
| 1-187 | 57+28.85'N | 44.40' RT | 727.12 | 574701.83 | 852020.95 | 1-203 | 57+67.88'N | 38.68' RT | 729.04 | 574749.69 | 852015.42 |
| 1-188 | 57+34.05'N | 39.30' RT | 727.35 | 574716.06 | 852015.88 | 1-204 | 57+72.68'N | 38.59' RT | 729.10 | 574754.69 | 852015.35 |
| 1-189 | 57+31.61'N | 44.35' RT | 727.09 | 574713.59 | 852020.92 | 1-204B | 57+67.77'N | 43.68' RT | 729.12 | 574749.76 | 852020.42 |
| 1-190 | 57+37.29'N | 39.25' RT | 727.22 | 574719.30 | 852015.84 | 1-205 | 57+72.75'N | 43.59' RT | 729.19 | 574754.74 | 852020.36 |
| 1-191 | 57+32.32'N | 44.34' RT | 727.10 | 574714.30 | 852020.91 | 1-205B | 57+72.75'N | 43.59' RT | 729.19 | 574754.74 | 852020.36 |
| 1-192 | 57+38.14'N | 39.23' RT | 727.23 | 574720.15 | 852015.83 | | | | | | |
| 1-193 | 57+35.23'N | 44.28' RT | 727.15 | 574717.21 | 852020.87 | | | | | | |
| 1-194 | 57+41.70'N | 39.16' RT | 727.29 | 574723.70 | 852015.78 | | | | | | |
| 1-195 | 57+41.79'N | 44.16' RT | 727.25 | 574723.77 | 852020.78 | | | | | | |
| 1-196 | 57+47.70'N | 39.05' RT | 727.71 | 574729.70 | 852015.70 | | | | | | |
| 1-197 | 57+47.79'N | 44.05' RT | 727.67 | 574729.77 | 852020.70 | | | | | | |
| 1-198 | 57+52.69'N | 38.96' RT | 727.78 | 574734.70 | 852015.63 | | | | | | |
| 1-199 | 57+52.79'N | 43.96' RT | 727.74 | 574734.77 | 852020.63 | | | | | | |
| 1-200 | 57+57.69'N | 38.87' RT | 728.19 | 574739.70 | 852015.56 | | | | | | |
| 1-201 | 57+57.79'N | 43.86' RT | 728.19 | 574739.77 | 852020.56 | | | | | | |
| 1-202 | 57+62.79'N | 43.77' RT | 728.65 | 574744.77 | 852020.49 | | | | | | |
| 1-203 | 57+67.88'N | 38.68' RT | 729.04 | 574749.69 | 852015.42 | | | | | | |
| 1-204 | 57+72.68'N | 38.59' RT | 729.10 | 574754.69 | 852015.35 | | | | | | |
| 1-204B | 57+67.77'N | 43.68' RT | 729.12 | 574749.76 | 852020.42 | | | | | | |
| 1-205 | 57+72.75'N | 43.59' RT | 729.19 | 574754.74 | 852020.36 | | | | | | |
| 1-205B | 57+72.75'N | 43.59' RT | 729.19 | 574754.74 | 852020.36 | | | | | | |

PROJECT NO: 1130-66-76 COUNTY: OUFAYATIME HWY: CTH N

FILE NAME: C:\WORK\PROJECTS\1130-66-76\PROJECT FILES\DRN\1130667602\301-CDWG LAYOUT NAME: MOASIS DR

DATE: 5/9/2024 1:55 PM PLOT DATE: 5/9/2024 1:55 PM PLOT BY: AARON SCHRAMM PLOT NAME: C:\WORK\PROJECTS\1130-66-76\PROJECT FILES\DRN\1130667602\301-CDWG

SCALE: 1"=100'

SHEET 41

INTERSECTION 1
 (PATRIOT DR & MOASIS DR)

LEGEND

- LL LEVEL LANDING
- (MFE) MAXIMUM EXTENT FEASIBLE (NON-ADA COMPLIANT FEATURES PRESENT)
- (CURB) CURB RAMP DETECTABLE WARNING FIELD
- (YELLOW) YELLOW
- (SLOPE) SLOPE INTERCEPT
- (ARROW) FLOW ARROWS

NOTES

CONTRACTOR TO FIELD VERIFY ELEVATIONS, GRADES, SLOPES, LENGTHS, AND MATCH POINTS PRIOR TO CURB RAMP CONSTRUCTION.

THE ENGINEER MAY ADJUST ELEVATIONS TO FIT FIELD CONDITIONS WITHIN THE CONDITIONS OF THE STANDARD DETAIL DRAWINGS.

THE CROSS SLOPE OF THE CURBS SHALL BE 4% UNLESS OTHERWISE NOTED.

THE MAXIMUM GRADE BREAK BETWEEN THE GUTTER PAN AND CURB RAMP SHALL BE 11%.

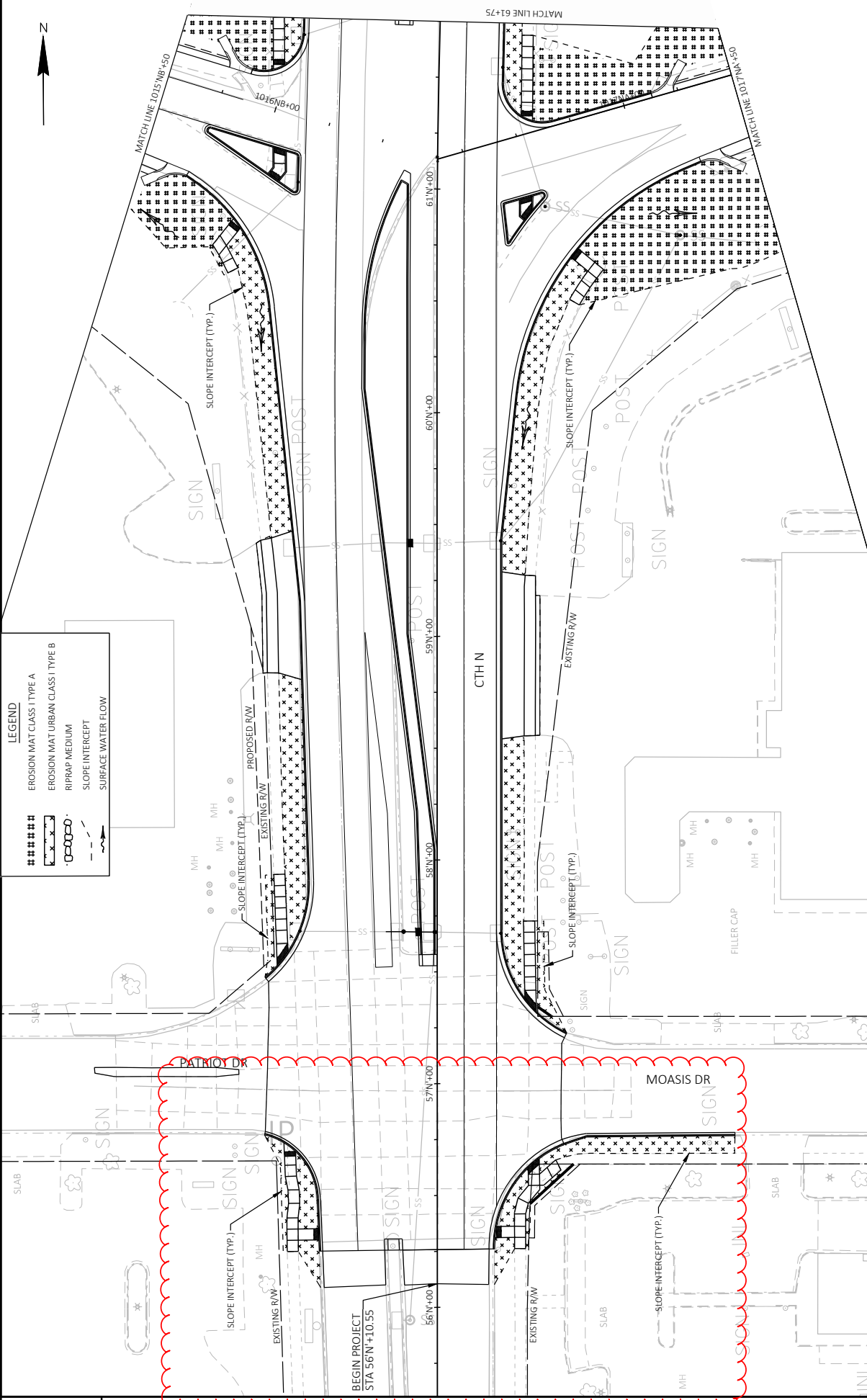
SIDEWALK AND CURB RAMP RUNNING SLOPE SHALL NOT EXCEED 8.33% (12:1V) UNLESS OTHERWISE SHOWN.

INT 1 - MOASIS DR & PATRIOT DR (NE QUADRANT)

BOC RADIUS = 51.0
 CURB RAMP LANDING LENGTH (X'Y') = 7.7
 RADIAL CHORD LENGTH = 9.5
 RADIAL WARNING FIELD AREA = 16.0 SF

INT 1 - MOASIS DR & PATRIOT DR (SE QUADRANT)

BOC RADIUS = 49.5
 CURB RAMP LANDING LENGTH (X'Y') = 6.9
 RADIAL CHORD LENGTH = 6.5
 RADIAL WARNING FIELD AREA = 13.1 SF



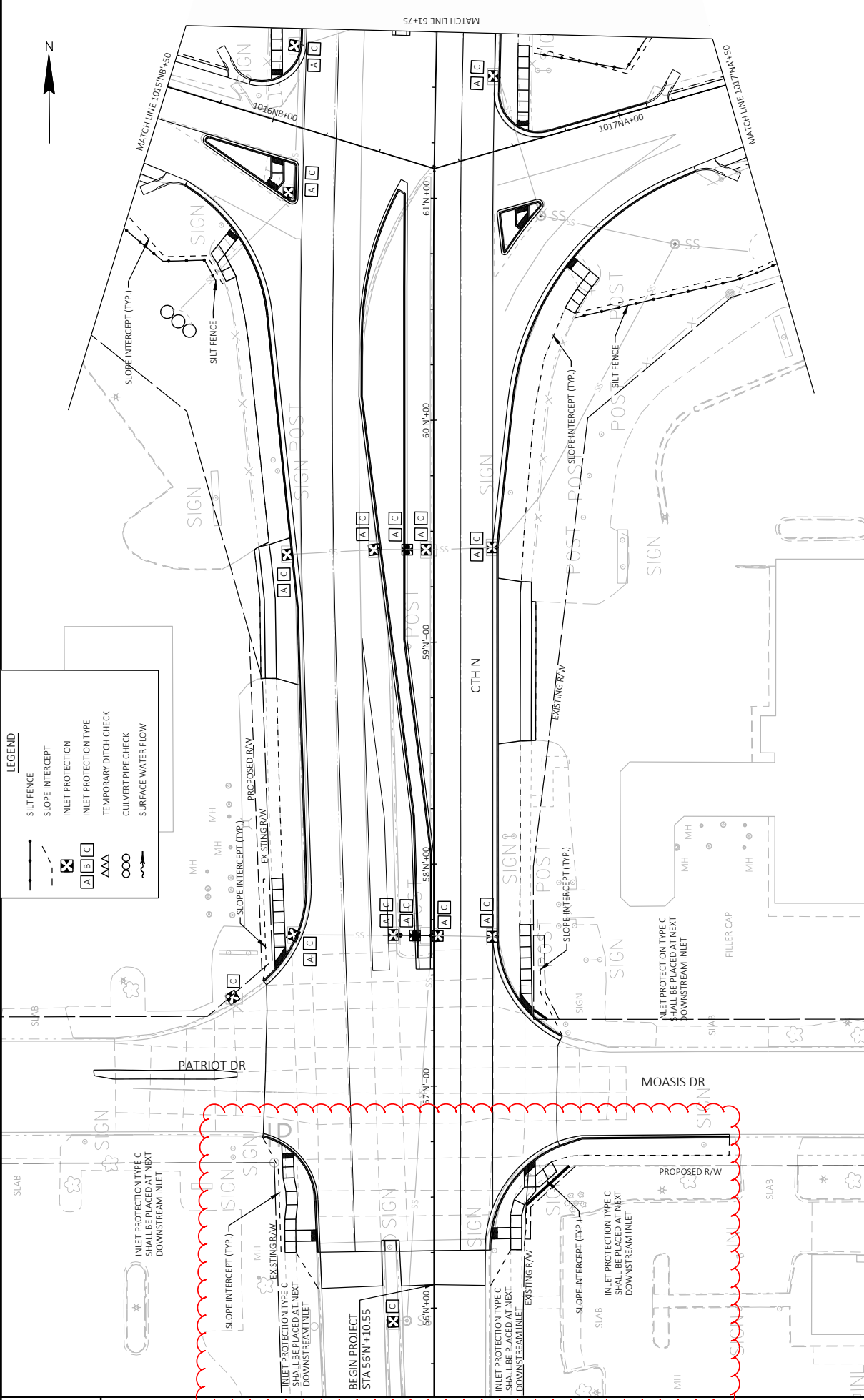
LEGEND

- ##### EROSION MAT CLASS I TYPE A
- ##### EROSION MAT URBAN CLASS I TYPE B
- XXXXX RIPRAP MEDIUM
- - - SLOPE INTERCEPT
- - - SURFACE WATER FLOW

PROJECT NO: 1130-66-76
 COUNTY: OUTAGAMIE
 HWY: CTH N
 EROSION CONTROL - PERMANENT
 SHEET 49
 E

FILE NAME: C:\Users\AS\Documents\1130-66-76\PROJECT FILES\1130-66-76\1130-66-76-02-001-ECN-PERMANENT.DWG
 LAYOUT NAME: 02024.ecn
 PLOT DATE: 5/9/2024 2:28 PM
 PLOT BY: AARON SCHRAMM
 PLOT NAME: 1 IN=10 FT
 PLOT SCALE: 1 IN=10 FT
 WKS/CD/CARDS SHEET 42

Addendum No. 02
 ID 1130-66-76
 Revised Sheet 49
 May 9, 2024

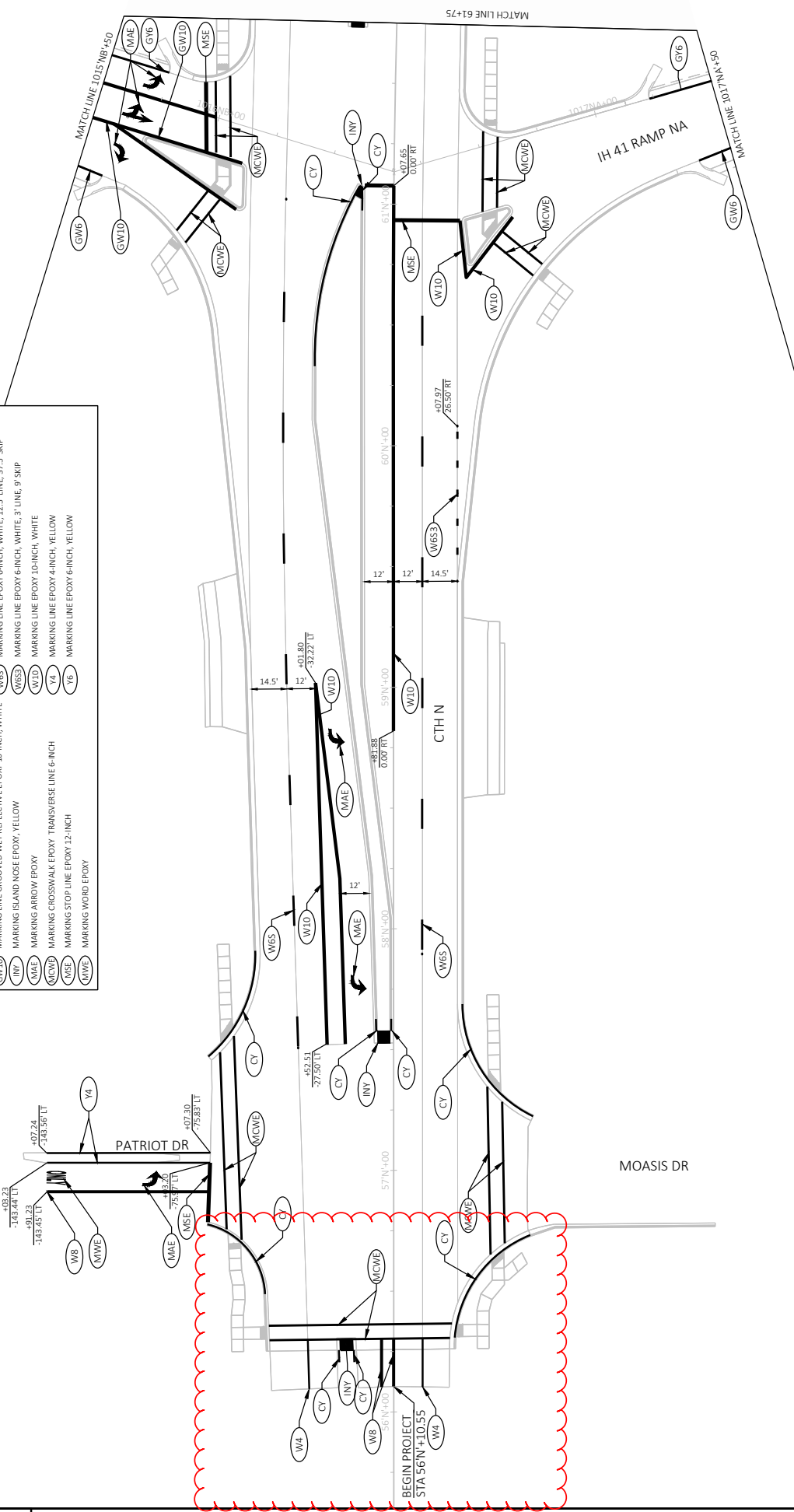


Addendum No. 02
 ID 1130-66-76
 Revised Sheet 59
 May 9, 2024



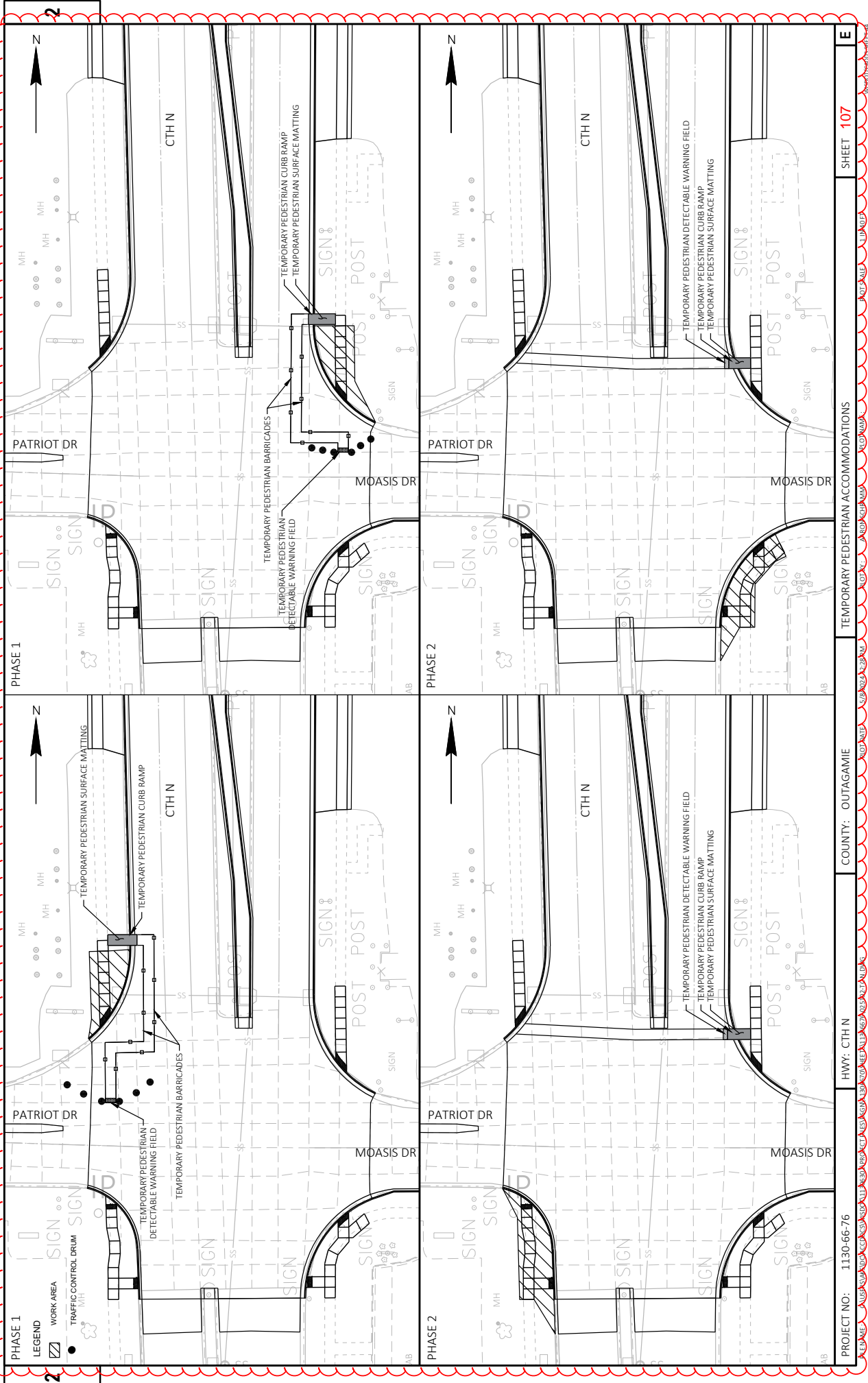
LEGEND

| | | | |
|--------|--|--------|--|
| (W4) | MARKING CURB EPOXY, YELLOW | (W4) | MARKING LINE EPOXY 4-INCH, WHITE |
| (CY) | MARKING LINE GROOVED WET REFLECTIVE EPOXY 6-INCH, WHITE | (W6) | MARKING LINE EPOXY 6-INCH, WHITE |
| (GWB) | MARKING LINE GROOVED WET REFLECTIVE EPOXY 6-INCH, YELLOW | (W8) | MARKING LINE EPOXY 8-INCH, WHITE |
| (G76) | MARKING LINE GROOVED WET REFLECTIVE EPOXY 10-INCH, WHITE | (W5S) | MARKING LINE EPOXY 6-INCH, WHITE, 12.5' LINE, 37.5' SKIP |
| (G710) | MARKING ISLAND NOSE EPOXY, YELLOW | (W6S3) | MARKING LINE EPOXY 6-INCH, WHITE, 3' LINE, 9' SKIP |
| (IN) | MARKING ARROW EPOXY | (Y4) | MARKING LINE EPOXY 10-INCH, WHITE |
| (MAE) | MARKING CROSSWALK EPOXY TRANSVERSE LINE 6-INCH | (Y6) | MARKING LINE EPOXY 4-INCH, YELLOW |
| (MCWE) | MARKING STOP LINE EPOXY 12-INCH | (Y6) | MARKING LINE EPOXY 6-INCH, YELLOW |
| (MCWE) | MARKING WORD EPOXY | | |



| | | | |
|--|--|---------------------------------------|---------------------------------------|
| PROJECT NO: 1130-66-76 | COUNTY: OUTAGAMIE | PAVEMENT MARKING | SHEET 85 |
| <small>FILE NAME: C:\Users\W501\OneDrive\Documents\1130-66-76\PROJECT FILES\66\1130-66-76\04501-PLAN.DWG LAYOUT NAME: 04501.PN</small> | <small>PLOT DATE: 5/20/2024 11:59 AM</small> | <small>PLOT BY: AARON SCHRAMM</small> | <small>PLOT SCALE: 1 IN=10 FT</small> |
| HWY: CTH N | | <small>WIKID/CARDS SHEET 42</small> | |

Addendum No. 02
 ID 1130-66-76
 Revised Sheet 85
 May 9, 2024



PROJECT NO: 1130-66-76 HWY: CTH N COUNTY: OUTAGAMIE SHEET 107

Addendum No. 02
 ID 1130-66-76
 Revised Sheet 107
 May 9, 2024

PREPARE FOUNDATION FOR BASE AGGREGATE

| CATEGORY | LOCATION | STATION TO | STATION ALIGNMENT | STA | 211.0500 |
|----------|---------------|------------|-------------------|------|----------|
| 1000 | CTHN | 56+10.55 - | 63+04.65 | CTHN | 14 |
| | CTHN | 65+23.75 - | 70+34.30 | CTHN | 9 |
| | PROJECT TOTAL | | | | 23 |

CONCRETE PAVEMENT APPROACH SLAB

| CATEGORY | LOCATION | STATION TO | STATION ALIGNMENT | SY | 415.0410 |
|----------|---------------|------------|-------------------|------|----------|
| 1000 | CTHN | 62+88.29 - | 63+04.65 | CTHN | 133 |
| | CTHN | 65+23.75 - | 66+39.54 | CTHN | 133 |
| | PROJECT TOTAL | | | | 266 |

UNDERDRAIN ITEMS

| CATEGORY | LOCATION | STATION TO | STATION | TON | LF | SCHEDULE A | SY | 645.0111 |
|----------|---------------|------------|----------|-----|-----|-----------------|-----|----------|
| 1000 | CTHN | 56+10.55 - | 63+04.65 | 43 | 580 | PIPE UNDERDRAIN | 258 | |
| | CTHN | 65+23.75 - | 70+34.30 | 30 | 400 | OPEN GRADED | 178 | |
| | PROJECT TOTAL | | | 73 | 980 | | 436 | |

DRILLED BAR ITEMS

| CATEGORY | LOCATION | STATION TO | STATION ALIGNMENT | DRILLED TIE BARS EACH | DRILLED DOWEL BARS EACH | 416.0620 |
|----------|---------------|------------|-------------------|-----------------------|-------------------------|----------|
| 1000 | CTHN | 56+10.55 - | 57+52 | CTHN | 64 | 110 |
| | PROJECT TOTAL | | | | 64 | 110 |

CONCRETE SURFACE DRAINS

| CATEGORY | LOCATION | STATION TO | STATION ALIGNMENT | CONCRETE SURFACE DRAINS | 602.3010 |
|----------|---------------|--------------|-------------------|-------------------------|----------|
| 1000 | RAMP NA | 1016+40.97 - | 1022+50 | NA | 4 |
| | RAMP NB | 1012+50 - | 1016+14.52 | NB | 4 |
| | RAMP NC | 1010+60 - | 1016+34.47 | NC | 4 |
| | RAMP ND | 1016+89.39 - | 1022+25 | ND | 4 |
| | PROJECT TOTAL | | | | 16 |

PROJECT NO: 1130-66-76 HWY: CTH N

COUNTY: OUTAGAMIE

MISCELLANEOUS QUANTITIES

SHEET NO: 132

PLOT BY: EMCS, INC

PLOT DATE 5/8/2024 3:24 PM

FILE NAME : Y:\5axx\5441-ds22-1141-010-pse\mqs\90pct\mqs\90pct\11306676_3_Pavement.pptm

BASE AGGREGATE ITEMS

| CATEGORY | LOCATION | STATION TO | STATION ALIGNMENT | TON | 305.0110 | 305.0120* | 312.0110 |
|----------|----------------|--------------|-------------------|------|----------|-----------|----------|
| 1000 | CTHN | 56+10.55 - | 63+04.65 | CTHN | -- | 2,800 | 1,200 |
| | CTHN | 65+23.75 - | 70+34.30 | CTHN | -- | 1,900 | 800 |
| | RAMP NA | 1016+40.97 - | 1022+00 | NA | 70 | 900 | 2,600 |
| | RAMP NB | 1012+50 - | 1016+14.52 | NB | 60 | 1,100 | 2,700 |
| | RAMP NC | 1010+60 - | 1016+34.47 | NC | 50 | 700 | 2,500 |
| | RAMP ND | 1016+89.39 - | 1022+25 | ND | 70 | 1,200 | 2,900 |
| | RAMP NA TIE IN | 1022+00 - | 1024+75 | NA | 70 | 600 | 900 |
| | RAMP NB TIE IN | 1009+00 - | 1011+50 | NB | 160 | 1,000 | 1,400 |
| | RAMP NC TIE IN | 1009+00 - | 1011+50 | NC | 80 | 700 | 900 |
| | RAMP ND TIE IN | 1022+25 - | 1024+50 | ND | 60 | 500 | 800 |
| | SUBTOTAL | | | 620 | 11,400 | 16,700 | |
| | CATEGORY TOTAL | | | 620 | 11,400 | 16,700 | |

1600

| | | | |
|----------------|----|---|----|
| UNDISTRIBUTED | -- | 1 | -- |
| CATEGORY TOTAL | -- | 1 | -- |

1610

| | | | |
|----------------|-----|--------|--------|
| UNDISTRIBUTED | -- | 1 | -- |
| CATEGORY TOTAL | -- | 1 | -- |
| PROJECT TOTAL | 620 | 11,402 | 16,700 |

*ADDITIONAL QUANTITIES SHOWN ELSEWHERE

CONCRETE PAVEMENT ITEMS

| CATEGORY | LOCATION | STATION TO | STATION ALIGNMENT | CONCRETE PAVEMENT 9-INCH | CONCRETE PAVEMENT 10-INCH | CONCRETE PAVEMENT 10-INCH | CONCRETE COLORING | CONCRETE CORRUGATED MEDIAN |
|----------|---------------|--------------|-------------------|--------------------------|---------------------------|---------------------------|-------------------|----------------------------|
| 1000 | CTHN | 56+10.55 - | 63+04.65 | CTHN | -- | 849 | -- | 246 |
| | CTHN | 65+23.75 - | 70+34.30 | CTHN | -- | 3,519 | -- | -- |
| | RAMP NA | 1016+40.97 - | 1022+50 | NA | 1,508 | -- | 9 | -- |
| | RAMP NB | 1012+50 - | 1016+14.52 | NB | 2,052 | -- | 9 | -- |
| | RAMP NC | 1010+60 - | 1016+34.47 | NC | 1,382 | -- | 9 | -- |
| | RAMP ND | 1016+89.39 - | 1022+25 | ND | 1,963 | -- | 9 | -- |
| | PROJECT TOTAL | | | 6,905 | 8,609 | 849 | 36 | 246 |

Addendum No. 02
ID 1130-66-76
Revised Sheet 132
May 9, 2024

CURB RAMP DETECTABLE WARNING FIELDS

| CATEGORY | LOCATION | STATION TO | STATION ALIGNMENT | SF | 602.0605 CURB RAMP DETECTABLE WARNING FIELD YELLOW | 602.0605 CURB RAMP DETECTABLE WARNING FIELD RADIAL YELLOW |
|---------------|----------|------------|-------------------|-----|--|---|
| 1000 | CTHN | 56+10.55 - | 63+04.65 CTHN | 113 | 45 | |
| | CTHN | 65+23.75 - | 70+34.30 CTHN | 81 | -- | |
| PROJECT TOTAL | | | | 194 | 45 | |

CONCRETE MEDIAN NOSE

| CATEGORY | LOCATION | STATION TO | STATION ALIGNMENT | SF | 620.0300 CONCRETE MEDIAN SLOPED NOSE TYPE 1 | 620.0300 CONCRETE MEDIAN SLOPED NOSE TYPE 2 |
|---------------|----------|------------|-------------------|-----|--|--|
| 1000 | CTHN | 56+10.55 - | 63+04.65 CTHN | 180 | 5 | |
| | CTHN | 65+23.75 - | 70+34.30 CTHN | 80 | 5 | |
| PROJECT TOTAL | | | | 270 | | |

CONCRETE SIDEWALK

| CATEGORY | LOCATION | STATION TO | STATION ALIGNMENT | INCH | SF | 602.0405 CONCRETE SIDEWALK 4- INCH |
|---------------|----------|------------|-------------------|-------|--------|---|
| 1000 | CTHN | 56+10.55 - | 63+04.65 CTHN | 6.826 | 6,826 | |
| | CTHN | 65+23.75 - | 70+34.30 CTHN | 7.200 | 7,200 | |
| PROJECT TOTAL | | | | | 14,026 | |

DRIVEWAYS

| CATEGORY | LOCATION | STATION TO | STATION ALIGNMENT | TON | 305.0120* BASE AGGREGATE DENSE 1 1/4-INCH | 602.0815 CONCRETE DRIVEWAY 7- INCH | 465.0120 ASPHALTIC SURFACE DRIVEWAYS AND ENTRANCES |
|---------------|----------|------------|-------------------|-----|--|---|--|
| 1000 | CTHN | 56+10.55 - | 63+04.65 CTHN | 74 | 222 | 10 | |
| | CTHN | 65+23.75 - | 70+34.30 CTHN | 74 | 222 | 10 | |
| PROJECT TOTAL | | | | 148 | 444 | 20 | |

*ADDITIONAL QUANTITIES SHOWN ELSEWHERE

CONCRETE CURB & GUTTER

| CATEGORY | LOCATION | STATION TO | STATION ALIGNMENT | LF | 601.0405 CONCRETE CURB & GUTTER 18- INCH TYPE A | 601.0409 CONCRETE CURB & GUTTER 30- INCH TYPE A |
|---------------|----------|--------------|-------------------|-------|--|--|
| 1000 | CTHN | 56+10.55 - | 63+04.65 CTHN | 1,096 | 771 | |
| | CTHN | 65+23.75 - | 70+34.30 CTHN | 762 | 482 | |
| | RAMP NA | 1016+40.97 - | 1022+50 NA | 65 | 284 | |
| | RAMP NB | 1012+50 - | 1016+14.52 NB | 110 | 238 | |
| | RAMP NC | 1010+60 - | 1016+34.47 NC | 101 | 222 | |
| | RAMP ND | 1016+59.39 - | 1022+25 ND | 127 | 235 | |
| PROJECT TOTAL | | | | 2,261 | 2,232 | |

*ADDITIONAL QUANTITIES SHOWN ELSEWHERE

TEMPORARY PAVEMENT

| CATEGORY | LOCATION | STATION TO | STATION ALIGNMENT | SY | 204.0100* REMOVING CONCRETE PAVEMENT | 204.0150* REMOVING CURB & GUTTER | 305.0120* BASE AGGREGATE DENSE 1 1/4-INCH | 465.0125 ASPHALTIC SURFACE TEMPORARY | 690.0250* SAWING CONCRETE |
|---------------|----------|------------|-------------------|----|---|--|--|---|---------------------------------|
| 1000 | CTHN | 56+10.55 - | 63+04.65 CTHN | 27 | 43 | 105 | 52 | 14 | 134 |
| | CTHN | 65+23.75 - | 70+34.30 CTHN | 43 | 70 | 43 | 25 | 7 | -- |
| PROJECT TOTAL | | | | 70 | 148 | 148 | 77 | 21 | 134 |

ASPHALTIC ITEMS

| CATEGORY | LOCATION | STATION TO | STATION ALIGNMENT | GAL | 455.0605 TACK COAT | 460.5224 HMA PAVEMENT 4 LT 58-28 S | 460.6224 HMA PAVEMENT 4 MT 58-28 S | 465.0105 ASPHALTIC SURFACE |
|---------------|----------------|--------------|-------------------|-----|-----------------------|--|--|----------------------------------|
| 1000 | CTHN | 56+10.55 - | 63+04.65 CTHN | 8 | -- | 13 | 13 | -- |
| | CTHN | 65+23.75 - | 70+34.30 CTHN | 9 | -- | 14 | 14 | -- |
| | RAMP NA | 1016+40.97 - | 1022+50 NA | 47 | 131 | -- | -- | 2 |
| | RAMP NB | 1012+50 - | 1016+14.52 NB | 43 | 119 | -- | -- | 6 |
| | RAMP NC | 1010+60 - | 1016+34.47 NC | 41 | 116 | -- | -- | 3 |
| | RAMP ND | 1016+59.39 - | 1022+25 ND | 47 | 131 | -- | -- | 6 |
| | RAMP NA TIE IN | 1022+50 - | 1024+75 NA | 73 | -- | -- | -- | 145 |
| | RAMP NB TIE IN | 1012+50 - | 1012+50 NB | 70 | -- | -- | -- | 140 |
| | RAMP NC TIE IN | 1009+00 - | 1010+60 NC | 67 | -- | -- | -- | 135 |
| | RAMP ND TIE IN | 1022+25 - | 1023+85 ND | 52 | -- | -- | -- | 105 |
| PROJECT TOTAL | | | | 457 | 497 | 27 | 541 | |

PROJECT NO: 1130-66-76

HWY: CTH N

COUNTY: OUTAGAMIE

MISCELLANEOUS QUANTITIES

SHEET NO: 133

Addendum No. 02
ID 1130-66-76
Revised Sheet 133
May 9, 2024

SAWING

| CATEGORY | LOCATION | STATION | TO | STATION | ALIGNMENT | SAWING ASPHALT LF | SAWING CONCRETE LF |
|----------|----------------------|------------|----|------------|-----------|-------------------|--------------------|
| 1000 | CTH N | 56+10.55 | - | 63+04.65 | CTH N | 251 | 375 |
| | CTH N | 65+23.75 | - | 70+34.30 | CTH N | 55 | 30 |
| | RAMP NA | 1016+40.97 | - | 1022+50 | NA | -- | 23 |
| | RAMP NB | 1012+50 | - | 1016+14.52 | NB | -- | 23 |
| | RAMP NC | 1010+60 | - | 1016+34.47 | NC | -- | 25 |
| | RAMP ND | 1016+59.39 | - | 1022+25 | ND | -- | 23 |
| | PROJECT TOTAL | | | | | 306 | 499 |

*ADDITIONAL QUANTITIES SHOWN ELSEWHERE

WATER

| CATEGORY | LOCATION | 624.0100 MGAL |
|----------|---------------------------|---------------|
| 1000 | PROJECT-BASE COMPACTION | 189 |
| | PROJECT-COMMON EXCAVATION | 74 |
| | PROJECT TOTAL | 263 |

FINISHING ROADWAY

| CATEGORY | LOCATION | FINISHING ROADWAY EACH |
|----------|----------------------|------------------------|
| 1000 | PROJECT | 1 |
| | PROJECT TOTAL | 1 |

MOBILIZATION

| CATEGORY | LOCATION | MOBILIZATION EACH |
|----------|----------------------|-------------------|
| 1000 | PROJECT | 1 |
| | PROJECT TOTAL | 1 |

619.1000

PROJECT NO: 1130-66-76

HWY: CTH N

COUNTY: OUTAGAMIE

MISCELLANEOUS QUANTITIES

SHEET NO: 143

E

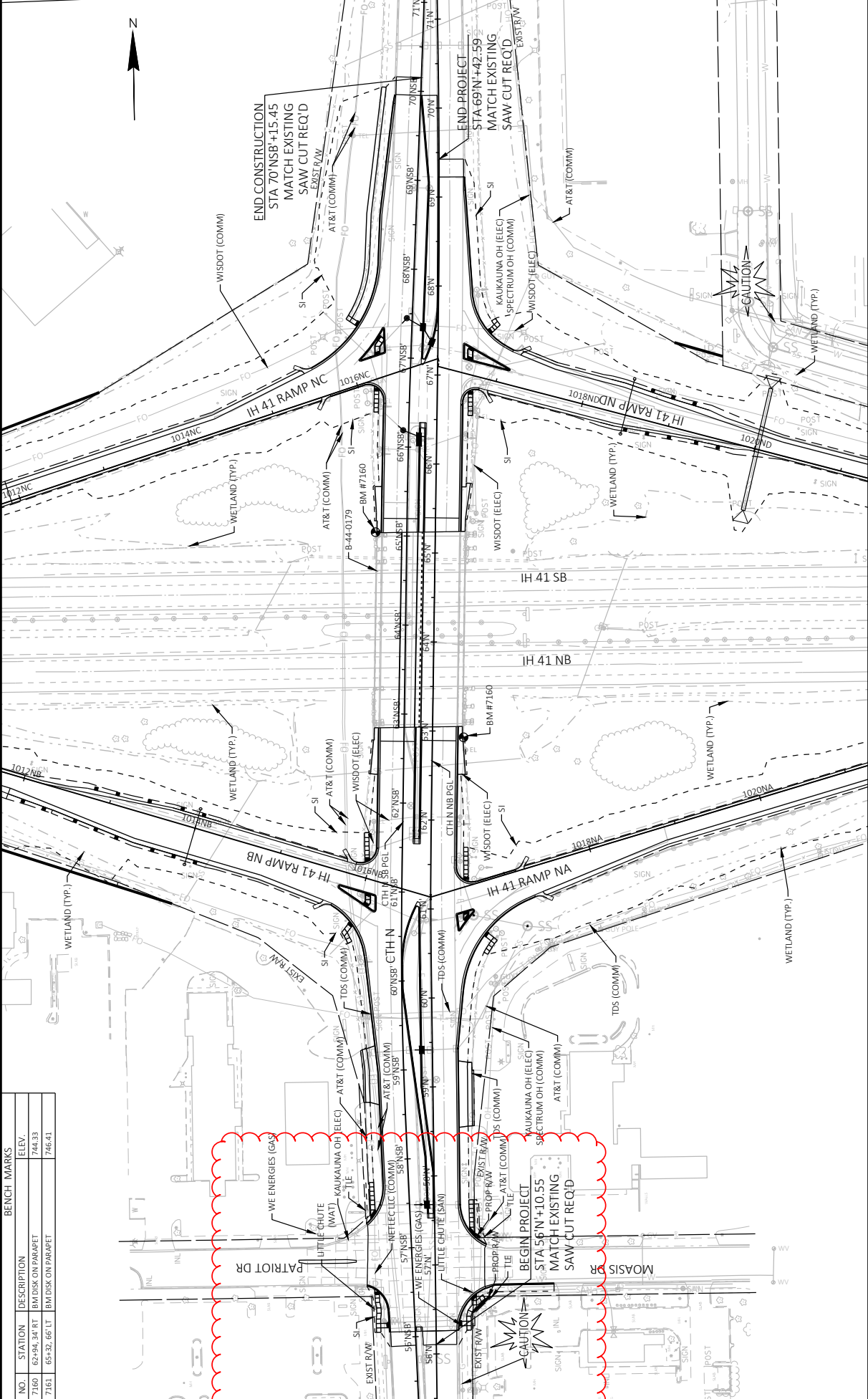
FILE NAME : Y:\54xx\5441.d622.ih41.og\10 pse\mq5\90pct\mq5\pwrpt\11306676_3_miscellaneous.pptm

PLOT DATE 5/8/2024 3:38 PM

PLOT BY : EMCS, INC

Addendum No. 02
 ID 1130-66-76
 Revised Sheet 143
 May 9, 2024

| BENCH MARKS | | |
|-------------|-----------------------------------|--------|
| NO. | DESCRIPTION | ELEV. |
| 7160 | 62+94.34 RT BM DISK ON PARAPET | 744.33 |
| 7161 | 65+32.66 LT BM DISK ON PARAPET | 746.41 |



Addendum No. 02
ID 1130-66-76
Revised Sheet 164
May 9, 2024

PROJECT NO: 1130-66-76
 HWY: CTH N
 COUNTY: OUTAGAMIE
 PLAN & PROFILE - CTH N
 SHEET 164

FILE NAME: C:\Users\ASD\OneDrive\Documents\1130-66-76\PROJECT FILES\DRAWING\1130-66-76\0001-PIN.DWG
 LAYOUT NAME: 060101-PP-100
 PLOT DATE: 5/9/2024 12:41 PM
 PLOT BY: AARON SCHRAMM
 PLOT NAME: 1 IN=100 FT
 WKSRT/CARDS SHEET 44



Proposal Schedule of Items

Proposal ID: 20240514015 Project(s): 1130-66-76

Federal ID(s): N/A

SECTION: 0001 Contract Items

Alt Set ID: Alt Mbr ID:

| Proposal Line Number | Item ID Description | Approximate Quantity and Units | Unit Price | Bid Amount |
|----------------------|--|--------------------------------|------------|------------|
| 0002 | 201.0205 Grubbing | 5.000 STA | _____. | _____. |
| 0004 | 203.0100 Removing Small Pipe Culverts | 1.000 EACH | _____. | _____. |
| 0006 | 203.0220 Removing Structure (structure) 0001. B-44-0179 | 1.000 EACH | _____. | _____. |
| 0008 | 204.0100 Removing Concrete Pavement | 17,470.000 SY | _____. | _____. |
| 0010 | 204.0120 Removing Asphaltic Surface Milling | 270.000 SY | _____. | _____. |
| 0012 | 204.0150 Removing Curb & Gutter | 349.000 LF | _____. | _____. |
| 0014 | 204.0155 Removing Concrete Sidewalk | 539.000 SY | _____. | _____. |
| 0016 | 204.0165 Removing Guardrail | 354.000 LF | _____. | _____. |
| 0018 | 204.0170 Removing Fence | 2,155.000 LF | _____. | _____. |
| 0020 | 204.0180 Removing Delineators and Markers | 10.000 EACH | _____. | _____. |
| 0022 | 204.0195 Removing Concrete Bases | 20.000 EACH | _____. | _____. |
| 0024 | 204.0220 Removing Inlets | 5.000 EACH | _____. | _____. |
| 0026 | 204.0245 Removing Storm Sewer (size) 0001. 12-Inch | 91.000 LF | _____. | _____. |
| 0028 | 204.9060.S Removing (item description) 0301. Communications Vault | 2.000 EACH | _____. | _____. |
| 0030 | 204.9060.S Removing (item description) 0302. Removing Existing Pole | 1.000 EACH | _____. | _____. |



Proposal Schedule of Items

Proposal ID: 20240514015 Project(s): 1130-66-76

Federal ID(s): N/A

SECTION: 0001 Contract Items

Alt Set ID: Alt Mbr ID:

| Proposal Line Number | Item ID Description | Approximate Quantity and Units | Unit Price | Bid Amount |
|----------------------|--|--------------------------------|------------|------------|
| 0032 | 204.9090.S Removing (item description) 0001. Removing Pedestrian Railing | 1,815.000 LF | _____. | _____. |
| 0034 | 205.0100 Excavation Common | 19,191.000 CY | _____. | _____. |
| 0036 | 211.0500 Prepare Foundation for Base Aggregate | 23.000 STA | _____. | _____. |
| 0038 | 213.0100 Finishing Roadway (project) 0001. 1130-66-76 | 1.000 EACH | _____. | _____. |
| 0040 | 305.0110 Base Aggregate Dense 3/4-Inch | 620.000 TON | _____. | _____. |
| 0042 | 305.0120 Base Aggregate Dense 1 1/4-Inch | 11,553.000 TON | _____. | _____. |
| 0044 | 310.0110 Base Aggregate Open-Graded | 43.000 TON | _____. | _____. |
| 0046 | 312.0110 Select Crushed Material | 16,700.000 TON | _____. | _____. |
| 0048 | 415.0090 Concrete Pavement 9-Inch | 6,905.000 SY | _____. | _____. |
| 0050 | 415.0100 Concrete Pavement 10-Inch | 8,609.000 SY | _____. | _____. |
| 0052 | 415.0410 Concrete Pavement Approach Slab | 266.000 SY | _____. | _____. |
| 0054 | 415.1100 Concrete Pavement HES 10-Inch | 849.000 SY | _____. | _____. |
| 0056 | 416.0610 Drilled Tie Bars | 64.000 EACH | _____. | _____. |
| 0058 | 416.0620 Drilled Dowel Bars | 110.000 EACH | _____. | _____. |
| 0060 | 455.0605 Tack Coat | 459.000 GAL | _____. | _____. |



Proposal Schedule of Items

Proposal ID: 20240514015 Project(s): 1130-66-76

Federal ID(s): N/A

SECTION: 0001 Contract Items

Alt Set ID: Alt Mbr ID:

| Proposal Line Number | Item ID Description | Approximate Quantity and Units | Unit Price | Bid Amount |
|----------------------|---|--------------------------------|------------|------------|
| 0062 | 460.2000 Incentive Density HMA Pavement | 320.000 DOL | 1.00000 | 320.00 |
| 0064 | 460.5224 HMA Pavement 4 LT 58-28 S | 497.000 TON | _____ | _____ |
| 0066 | 460.6224 HMA Pavement 4 MT 58-28 S | 27.000 TON | _____ | _____ |
| 0068 | 465.0105 Asphaltic Surface | 541.000 TON | _____ | _____ |
| 0070 | 465.0120 Asphaltic Surface Driveways and Field Entrances | 10.000 TON | _____ | _____ |
| 0072 | 465.0125 Asphaltic Surface Temporary | 21.000 TON | _____ | _____ |
| 0074 | 502.0100 Concrete Masonry Bridges | 163.000 CY | _____ | _____ |
| 0076 | 502.3205 Pigmented Surface Sealer Reseal | 179.000 SY | _____ | _____ |
| 0078 | 502.4205 Adhesive Anchors No. 5 Bar | 36.000 EACH | _____ | _____ |
| 0080 | 505.0600 Bar Steel Reinforcement HS Coated Structures | 44,700.000 LB | _____ | _____ |
| 0082 | 509.1500 Concrete Surface Repair | 6.000 SF | _____ | _____ |
| 0084 | 520.8000 Concrete Collars for Pipe | 5.000 EACH | _____ | _____ |
| 0086 | 522.0142 Culvert Pipe Reinforced Concrete Class III 42-Inch | 140.000 LF | _____ | _____ |
| 0088 | 522.1042 Apron Endwalls for Culvert Pipe Reinforced Concrete 42-Inch | 2.000 EACH | _____ | _____ |
| 0090 | 531.2030 Drilling Shaft 30-Inch | 52.000 LF | _____ | _____ |



Proposal Schedule of Items

Proposal ID: 20240514015 Project(s): 1130-66-76

Federal ID(s): N/A

SECTION: 0001 Contract Items

Alt Set ID: Alt Mbr ID:

| Proposal Line Number | Item ID Description | Approximate Quantity and Units | Unit Price | Bid Amount |
|----------------------|--|--------------------------------|------------|------------|
| 0092 | 531.5220 Foundation Single-Shaft Type MF-II (structure) 0501. S-44-0383 | 2.000 EACH | _____. | _____. |
| 0094 | 531.5220 Foundation Single-Shaft Type MF-II (structure) 0601. S-44-0384 | 2.000 EACH | _____. | _____. |
| 0096 | 532.5220 Monotube Full Span Type II (structure) 0502. S-44-0383 | 1.000 EACH | _____. | _____. |
| 0098 | 532.5220 Monotube Full Span Type II (structure) 0602. S-44-0384 | 1.000 EACH | _____. | _____. |
| 0100 | 601.0405 Concrete Curb & Gutter 18-Inch Type A | 2,261.000 LF | _____. | _____. |
| 0102 | 601.0409 Concrete Curb & Gutter 30-Inch Type A | 2,232.000 LF | _____. | _____. |
| 0104 | 602.0405 Concrete Sidewalk 4-Inch | 14,026.000 SF | _____. | _____. |
| 0106 | 602.0505 Curb Ramp Detectable Warning Field Yellow | 194.000 SF | _____. | _____. |
| 0108 | 602.0605 Curb Ramp Detectable Warning Field Radial Yellow | 45.000 SF | _____. | _____. |
| 0110 | 602.0815 Concrete Driveway 7-Inch | 222.000 SY | _____. | _____. |
| 0112 | 602.3010 Concrete Surface Drains | 16.000 CY | _____. | _____. |
| 0114 | 606.0200 Riprap Medium | 15.000 CY | _____. | _____. |
| 0116 | 608.0312 Storm Sewer Pipe Reinforced Concrete Class III 12-Inch | 108.000 LF | _____. | _____. |
| 0118 | 611.0530 Manhole Covers Type J | 2.000 EACH | _____. | _____. |



Proposal Schedule of Items

Proposal ID: 20240514015 Project(s): 1130-66-76

Federal ID(s): N/A

SECTION: 0001 Contract Items

Alt Set ID: Alt Mbr ID:

| Proposal Line Number | Item ID Description | Approximate Quantity and Units | Unit Price | Bid Amount |
|----------------------|--|--------------------------------|------------|------------|
| 0120 | 611.0624 Inlet Covers Type H | 6.000 EACH | _____ | _____ |
| 0122 | 611.2003 Manholes 3-FT Diameter | 2.000 EACH | _____ | _____ |
| 0124 | 611.3230 Inlets 2x3-FT | 6.000 EACH | _____ | _____ |
| 0126 | 611.8110 Adjusting Manhole Covers | 1.000 EACH | _____ | _____ |
| 0128 | 611.8115 Adjusting Inlet Covers | 19.000 EACH | _____ | _____ |
| 0130 | 612.0106 Pipe Underdrain 6-Inch | 980.000 LF | _____ | _____ |
| 0132 | 614.2300 MGS Guardrail 3 | 548.000 LF | _____ | _____ |
| 0134 | 614.2610 MGS Guardrail Terminal EAT | 4.000 EACH | _____ | _____ |
| 0136 | 614.2620 MGS Guardrail Terminal Type 2 | 4.000 EACH | _____ | _____ |
| 0138 | 616.0206 Fence Chain Link 6-FT | 2,241.000 LF | _____ | _____ |
| 0140 | 616.0700.S Fence Safety | 270.000 LF | _____ | _____ |
| 0142 | 618.0100 Maintenance and Repair of Haul Roads (project) 0001. 1130-66-76 | 1.000 EACH | _____ | _____ |
| 0144 | 619.1000 Mobilization | 1.000 EACH | _____ | _____ |
| 0146 | 620.0100 Concrete Corrugated Median | 246.000 SF | _____ | _____ |
| 0148 | 620.0300 Concrete Median Sloped Nose | 270.000 SF | _____ | _____ |
| 0150 | 624.0100 Water | 263.000 MGAL | _____ | _____ |



Proposal Schedule of Items

Proposal ID: 20240514015 Project(s): 1130-66-76

Federal ID(s): N/A

SECTION: 0001 Contract Items

Alt Set ID: Alt Mbr ID:

| Proposal Line Number | Item ID Description | Approximate Quantity and Units | Unit Price | Bid Amount |
|----------------------|---|--------------------------------|------------|------------|
| 0152 | 625.0100 Topsoil | 13,700.000 SY | _____. | _____. |
| 0154 | 628.1504 Silt Fence | 5,890.000 LF | _____. | _____. |
| 0156 | 628.1520 Silt Fence Maintenance | 5,890.000 LF | _____. | _____. |
| 0158 | 628.1905 Mobilizations Erosion Control | 3.000 EACH | _____. | _____. |
| 0160 | 628.1910 Mobilizations Emergency Erosion Control | 3.000 EACH | _____. | _____. |
| 0162 | 628.2002 Erosion Mat Class I Type A | 12,130.000 SY | _____. | _____. |
| 0164 | 628.2008 Erosion Mat Urban Class I Type B | 1,530.000 SY | _____. | _____. |
| 0166 | 628.7005 Inlet Protection Type A | 30.000 EACH | _____. | _____. |
| 0168 | 628.7015 Inlet Protection Type C | 40.000 EACH | _____. | _____. |
| 0170 | 628.7504 Temporary Ditch Checks | 450.000 LF | _____. | _____. |
| 0172 | 628.7555 Culvert Pipe Checks | 52.000 EACH | _____. | _____. |
| 0174 | 628.7560 Tracking Pads | 8.000 EACH | _____. | _____. |
| 0176 | 628.7570 Rock Bags | 20.000 EACH | _____. | _____. |
| 0178 | 629.0210 Fertilizer Type B | 10.300 CWT | _____. | _____. |
| 0180 | 630.0130 Seeding Mixture No. 30 | 615.000 LB | _____. | _____. |
| 0182 | 630.0200 Seeding Temporary | 440.000 LB | _____. | _____. |



Proposal Schedule of Items

Proposal ID: 20240514015 Project(s): 1130-66-76

Federal ID(s): N/A

SECTION: 0001 Contract Items

Alt Set ID: Alt Mbr ID:

| Proposal Line Number | Item ID Description | Approximate Quantity and Units | Unit Price | Bid Amount |
|----------------------|---|--------------------------------|------------|------------|
| 0184 | 630.0500 Seed Water | 310.000 MGAL | _____. | _____. |
| 0186 | 633.5200 Markers Culvert End | 2.000 EACH | _____. | _____. |
| 0188 | 634.0614 Posts Wood 4x6-Inch X 14-FT | 12.000 EACH | _____. | _____. |
| 0190 | 634.0616 Posts Wood 4x6-Inch X 16-FT | 19.000 EACH | _____. | _____. |
| 0192 | 634.0618 Posts Wood 4x6-Inch X 18-FT | 13.000 EACH | _____. | _____. |
| 0194 | 637.2210 Signs Type II Reflective H | 597.750 SF | _____. | _____. |
| 0196 | 637.2215 Signs Type II Reflective H Folding | 125.040 SF | _____. | _____. |
| 0198 | 638.2602 Removing Signs Type II | 46.000 EACH | _____. | _____. |
| 0200 | 638.3000 Removing Small Sign Supports | 54.000 EACH | _____. | _____. |
| 0202 | 643.0300 Traffic Control Drums | 11,318.000 DAY | _____. | _____. |
| 0204 | 643.0420 Traffic Control Barricades Type III | 1,853.000 DAY | _____. | _____. |
| 0206 | 643.0500 Traffic Control Flexible Tubular Marker Posts | 21.000 EACH | _____. | _____. |
| 0208 | 643.0600 Traffic Control Flexible Tubular Marker Bases | 21.000 EACH | _____. | _____. |
| 0210 | 643.0705 Traffic Control Warning Lights Type A | 3,830.000 DAY | _____. | _____. |
| 0212 | 643.0715 Traffic Control Warning Lights Type C | 460.000 DAY | _____. | _____. |



Proposal Schedule of Items

Proposal ID: 20240514015 Project(s): 1130-66-76

Federal ID(s): N/A

SECTION: 0001 Contract Items

Alt Set ID: Alt Mbr ID:

| Proposal Line Number | Item ID Description | Approximate Quantity and Units | Unit Price | Bid Amount |
|----------------------|---|--------------------------------|------------|------------|
| 0214 | 643.0800 Traffic Control Arrow Boards | 59.000 DAY | _____. | _____. |
| 0216 | 643.0900 Traffic Control Signs | 23,401.000 DAY | _____. | _____. |
| 0218 | 643.0910 Traffic Control Covering Signs Type I | 4.000 EACH | _____. | _____. |
| 0220 | 643.0920 Traffic Control Covering Signs Type II | 22.000 EACH | _____. | _____. |
| 0222 | 643.1000 Traffic Control Signs Fixed Message | 822.000 SF | _____. | _____. |
| 0224 | 643.1050 Traffic Control Signs PCMS | 307.000 DAY | _____. | _____. |
| 0226 | 643.1070 Traffic Control Cones 42-Inch | 1,781.000 DAY | _____. | _____. |
| 0228 | 643.1205.S Basic Traffic Queue Warning System | 8.000 DAY | _____. | _____. |
| 0230 | 643.3150 Temporary Marking Line Removable Tape 4-Inch | 1,350.000 LF | _____. | _____. |
| 0232 | 643.3180 Temporary Marking Line Removable Tape 6-Inch | 1,640.000 LF | _____. | _____. |
| 0234 | 643.5000 Traffic Control | 1.000 EACH | _____. | _____. |
| 0236 | 644.1440 Temporary Pedestrian Surface Matting | 238.000 SF | _____. | _____. |
| 0238 | 644.1601 Temporary Pedestrian Curb Ramp | 66.000 DAY | _____. | _____. |
| 0240 | 644.1605 Temporary Pedestrian Detectable Warning Field | 40.000 SF | _____. | _____. |
| 0242 | 644.1810 Temporary Pedestrian Barricade | 471.000 LF | _____. | _____. |



Proposal Schedule of Items

Proposal ID: 20240514015 Project(s): 1130-66-76

Federal ID(s): N/A

SECTION: 0001 Contract Items

Alt Set ID: Alt Mbr ID:

| Proposal Line Number | Item ID Description | Approximate Quantity and Units | Unit Price | Bid Amount |
|----------------------|--|--------------------------------|------------|------------|
| 0244 | 645.0111 Geotextile Type DF Schedule A | 436.000 SY | _____. | _____. |
| 0246 | 645.0120 Geotextile Type HR | 45.000 SY | _____. | _____. |
| 0248 | 646.1020 Marking Line Epoxy 4-Inch | 186.000 LF | _____. | _____. |
| 0250 | 646.2020 Marking Line Epoxy 6-Inch | 4,297.000 LF | _____. | _____. |
| 0252 | 646.2040 Marking Line Grooved Wet Ref Epoxy 6-Inch | 1,584.000 LF | _____. | _____. |
| 0254 | 646.3020 Marking Line Epoxy 8-Inch | 115.000 LF | _____. | _____. |
| 0256 | 646.4020 Marking Line Epoxy 10-Inch | 2,059.000 LF | _____. | _____. |
| 0258 | 646.4040 Marking Line Grooved Wet Ref Epoxy 10-Inch | 614.000 LF | _____. | _____. |
| 0260 | 646.5020 Marking Arrow Epoxy | 20.000 EACH | _____. | _____. |
| 0262 | 646.5120 Marking Word Epoxy | 8.000 EACH | _____. | _____. |
| 0264 | 646.6020 Marking Stop Line Epoxy 12-Inch | 213.000 LF | _____. | _____. |
| 0266 | 646.7420 Marking Crosswalk Epoxy Transverse Line 6-Inch | 874.000 LF | _____. | _____. |
| 0268 | 646.8120 Marking Curb Epoxy | 396.000 LF | _____. | _____. |
| 0270 | 646.8220 Marking Island Nose Epoxy | 6.000 EACH | _____. | _____. |
| 0272 | 646.9010 Marking Removal Line Water Blasting 4-Inch | 134.000 LF | _____. | _____. |



Proposal Schedule of Items

Proposal ID: 20240514015 Project(s): 1130-66-76

Federal ID(s): N/A

SECTION: 0001 Contract Items

Alt Set ID: Alt Mbr ID:

| Proposal Line Number | Item ID Description | Approximate Quantity and Units | Unit Price | Bid Amount |
|----------------------|--|--------------------------------|------------|------------|
| 0274 | 646.9110 Marking Removal Line Water Blasting 8-Inch | 65.000 LF | _____. | _____. |
| 0276 | 646.9310 Marking Removal Special Marking Water Blasting | 3.000 EACH | _____. | _____. |
| 0278 | 652.0210 Conduit Rigid Nonmetallic Schedule 40 1-Inch | 265.000 LF | _____. | _____. |
| 0280 | 652.0225 Conduit Rigid Nonmetallic Schedule 40 2-Inch | 4,903.000 LF | _____. | _____. |
| 0282 | 652.0235 Conduit Rigid Nonmetallic Schedule 40 3-Inch | 3,682.000 LF | _____. | _____. |
| 0284 | 652.0335 Conduit Rigid Nonmetallic Schedule 80 3-Inch | 1,015.000 LF | _____. | _____. |
| 0286 | 652.0605 Conduit Special 2-Inch | 355.000 LF | _____. | _____. |
| 0288 | 652.0700.S Install Conduit into Existing Item | 2.000 EACH | _____. | _____. |
| 0290 | 652.0800 Conduit Loop Detector | 801.000 LF | _____. | _____. |
| 0292 | 653.0154 Pull Boxes Non-Conductive 24x36-Inch | 12.000 EACH | _____. | _____. |
| 0294 | 653.0164 Pull Boxes Non-Conductive 24x42-Inch | 55.000 EACH | _____. | _____. |
| 0296 | 653.0905 Removing Pull Boxes | 31.000 EACH | _____. | _____. |
| 0298 | 654.0101 Concrete Bases Type 1 | 8.000 EACH | _____. | _____. |
| 0300 | 654.0105 Concrete Bases Type 5 | 17.000 EACH | _____. | _____. |



Proposal Schedule of Items

Proposal ID: 20240514015 Project(s): 1130-66-76

Federal ID(s): N/A

SECTION: 0001 Contract Items

Alt Set ID: Alt Mbr ID:

| Proposal Line Number | Item ID Description | Approximate Quantity and Units | Unit Price | Bid Amount |
|----------------------|---|--------------------------------|------------|------------|
| 0302 | 654.0110 Concrete Bases Type 10 | 4.000 EACH | _____. | _____. |
| 0304 | 654.0113 Concrete Bases Type 13 | 1.000 EACH | _____. | _____. |
| 0306 | 654.0120 Concrete Bases Type 10-Special | 1.000 EACH | _____. | _____. |
| 0308 | 654.0230 Concrete Control Cabinet Bases Type L30 | 2.000 EACH | _____. | _____. |
| 0310 | 655.0230 Cable Traffic Signal 5-14 AWG | 5,809.000 LF | _____. | _____. |
| 0312 | 655.0240 Cable Traffic Signal 7-14 AWG | 234.000 LF | _____. | _____. |
| 0314 | 655.0260 Cable Traffic Signal 12-14 AWG | 1,027.000 LF | _____. | _____. |
| 0316 | 655.0305 Cable Type UF 2-12 AWG Grounded | 1,458.000 LF | _____. | _____. |
| 0318 | 655.0515 Electrical Wire Traffic Signals 10 AWG | 2,179.000 LF | _____. | _____. |
| 0320 | 655.0610 Electrical Wire Lighting 12 AWG | 9,644.000 LF | _____. | _____. |
| 0322 | 655.0615 Electrical Wire Lighting 10 AWG | 18,494.000 LF | _____. | _____. |
| 0324 | 655.0635 Electrical Wire Lighting 2 AWG | 624.000 LF | _____. | _____. |
| 0326 | 655.0700 Loop Detector Lead In Cable | 1,937.000 LF | _____. | _____. |
| 0328 | 655.0800 Loop Detector Wire | 2,853.000 LF | _____. | _____. |
| 0330 | 656.0201 Electrical Service Meter Breaker Pedestal (location) 0001. CB1100 | 1.000 EACH | _____. | _____. |



Proposal Schedule of Items

Proposal ID: 20240514015 Project(s): 1130-66-76

Federal ID(s): N/A

SECTION: 0001 Contract Items

Alt Set ID: Alt Mbr ID:

| Proposal Line Number | Item ID Description | Approximate Quantity and Units | Unit Price | Bid Amount |
|----------------------|--|--------------------------------|------------|------------|
| 0332 | 656.0401 Electrical Service Main Lugs Only Meter Pedestal (location) 0001. CB1000 | 1.000 EACH | _____. | _____. |
| 0334 | 657.0100 Pedestal Bases | 8.000 EACH | _____. | _____. |
| 0336 | 657.0255 Transformer Bases Breakaway 11 1/2-Inch Bolt Circle | 17.000 EACH | _____. | _____. |
| 0338 | 657.0322 Poles Type 5-Aluminum | 16.000 EACH | _____. | _____. |
| 0340 | 657.0350 Poles Type 10 | 4.000 EACH | _____. | _____. |
| 0342 | 657.0352 Poles Type 10-Special | 1.000 EACH | _____. | _____. |
| 0344 | 657.0360 Poles Type 13 | 1.000 EACH | _____. | _____. |
| 0346 | 657.0420 Traffic Signal Standards Aluminum 13-FT | 6.000 EACH | _____. | _____. |
| 0348 | 657.0430 Traffic Signal Standards Aluminum 10-FT | 2.000 EACH | _____. | _____. |
| 0350 | 657.0530 Monotube Arms 30-FT | 4.000 EACH | _____. | _____. |
| 0352 | 657.0541 Monotube Arms 40-FT-Special | 1.000 EACH | _____. | _____. |
| 0354 | 657.0550 Monotube Arms 50-FT | 1.000 EACH | _____. | _____. |
| 0356 | 657.0710 Luminaire Arms Truss Type 4 1/2-Inch Clamp 12-FT | 20.000 EACH | _____. | _____. |
| 0358 | 657.0812 Luminaire Arms Steel 12-FT | 6.000 EACH | _____. | _____. |
| 0360 | 658.0173 Traffic Signal Face 3S 12-Inch | 20.000 EACH | _____. | _____. |



Proposal Schedule of Items

Proposal ID: 20240514015 Project(s): 1130-66-76

Federal ID(s): N/A

SECTION: 0001 Contract Items

Alt Set ID: Alt Mbr ID:

| Proposal Line Number | Item ID Description | Approximate Quantity and Units | Unit Price | Bid Amount |
|----------------------|--|--------------------------------|------------|------------|
| 0362 | 658.0174 Traffic Signal Face 4S 12-Inch | 4.000 EACH | _____. | _____. |
| 0364 | 658.0416 Pedestrian Signal Face 16-Inch | 8.000 EACH | _____. | _____. |
| 0366 | 658.0500 Pedestrian Push Buttons | 8.000 EACH | _____. | _____. |
| 0368 | 658.5070 Signal Mounting Hardware (location) 0201. IH 41 NB & CTH N (S44-2019) | 1.000 EACH | _____. | _____. |
| 0370 | 658.5070 Signal Mounting Hardware (location) 0202. IH 41 SB & CTH N (S44-0579) | 1.000 EACH | _____. | _____. |
| 0372 | 659.1120 Luminaires Utility LED B | 26.000 EACH | _____. | _____. |
| 0374 | 659.2130 Lighting Control Cabinets 120/240 30-Inch | 1.000 EACH | _____. | _____. |
| 0376 | 659.2230 Lighting Control Cabinets 240/480 30-Inch | 1.000 EACH | _____. | _____. |
| 0378 | 659.5000.S Lamp, Ballast, LED, Switch Disposal by Contractor | 70.000 EACH | _____. | _____. |
| 0380 | 670.0101 Field System Integrator | 1.000 EACH | _____. | _____. |
| 0382 | 670.0201 ITS Documentation | 1.000 EACH | _____. | _____. |
| 0384 | 671.0132 Conduit HDPE 3-Duct 2-Inch | 962.000 LF | _____. | _____. |
| 0386 | 671.0300 Fiber Optic Cable Marker | 4.000 EACH | _____. | _____. |
| 0388 | 673.0105 Communication Vault Type 1 | 2.000 EACH | _____. | _____. |
| 0390 | 673.0110 Communication Vault Type Round | 2.000 EACH | _____. | _____. |



Proposal Schedule of Items

Proposal ID: 20240514015 Project(s): 1130-66-76

Federal ID(s): N/A

SECTION: 0001 Contract Items

Alt Set ID: Alt Mbr ID:

| Proposal Line Number | Item ID Description | Approximate Quantity and Units | Unit Price | Bid Amount |
|----------------------|---|--------------------------------|------------|------------|
| 0392 | 673.0200 Tracer Wire Marker Posts | 3.000 EACH | _____ | _____ |
| 0394 | 678.0012 Install Fiber Optic Cable Outdoor Plant 12-CT | 1,513.000 LF | _____ | _____ |
| 0396 | 678.0024 Install Fiber Optic Cable Outdoor Plant 24-CT | 2,078.000 LF | _____ | _____ |
| 0398 | 678.0200 Fiber Optic Splice Enclosure | 2.000 EACH | _____ | _____ |
| 0400 | 678.0300 Fiber Optic Splice | 50.000 EACH | _____ | _____ |
| 0402 | 678.0400 Fiber Optic Termination | 4.000 EACH | _____ | _____ |
| 0404 | 678.0501 Communication System Testing | 1.000 EACH | _____ | _____ |
| 0406 | 690.0150 Sawing Asphalt | 306.000 LF | _____ | _____ |
| 0408 | 690.0250 Sawing Concrete | 633.000 LF | _____ | _____ |
| 0410 | 715.0502 Incentive Strength Concrete Structures | 978.000 DOL | 1.00000 | 978.00 |
| 0412 | 715.0720 Incentive Compressive Strength Concrete Pavement | 4,900.800 DOL | 1.00000 | 4,900.80 |
| 0414 | SPV.0060 Special 0001. Construction Staking Survey Project 1130-66-76 | 1.000 EACH | _____ | _____ |
| 0416 | SPV.0060 Special 0201. Remove Traffic Signal IH 41 NB & CTH N (S44-2019) | 1.000 EACH | _____ | _____ |
| 0418 | SPV.0060 Special 0202. Remove Traffic Signal IH 41 SB & CTH N (S44-0579) | 1.000 EACH | _____ | _____ |



Proposal Schedule of Items

Proposal ID: 20240514015 Project(s): 1130-66-76

Federal ID(s): N/A

SECTION: 0001 Contract Items

Alt Set ID: Alt Mbr ID:

| Proposal Line Number | Item ID Description | Approximate Quantity and Units | Unit Price | Bid Amount |
|----------------------|--|--------------------------------|-------------------|------------|
| 0420 | SPV.0060 Special 0203. Temporary Traffic Signals IH 41 NB & CTH N (S44-2019) | 1.000 EACH | _____. | _____. |
| 0422 | SPV.0060 Special 0204. Temporary Traffic Signals IH 41 SB & CTH N (S44-0579) | 1.000 EACH | _____. | _____. |
| 0424 | SPV.0060 Special 0301. Salvage Microwave Detector Equipment | 1.000 EACH | _____. | _____. |
| 0426 | SPV.0060 Special 0302. Remove and Reinstall Ramp Gate System | 1.000 EACH | _____. | _____. |
| 0428 | SPV.0060 Special 0401. Temporary Support B-44- 0179 | 1.000 EACH | _____. | _____. |
| 0430 | SPV.0075 Special 0100. Street Sweeping | 34.000 HRS | _____. | _____. |
| 0432 | SPV.0180 Special 0401. Methacrylate Flood Seal | 2,459.000 SY | _____. | _____. |
| 0434 | 646.2005 Marking Line Paint 6-Inch | 185.000 LF | _____. | _____. |
| 0436 | 646.5305 Marking Railroad Crossing Paint | 6.000 EACH | _____. | _____. |
| 0438 | 405.0100 Coloring Concrete WisDOT Red | 36.000 CY | _____. | _____. |
| Section: 0001 | | | Total: | _____. |
| | | | Total Bid: | _____. |