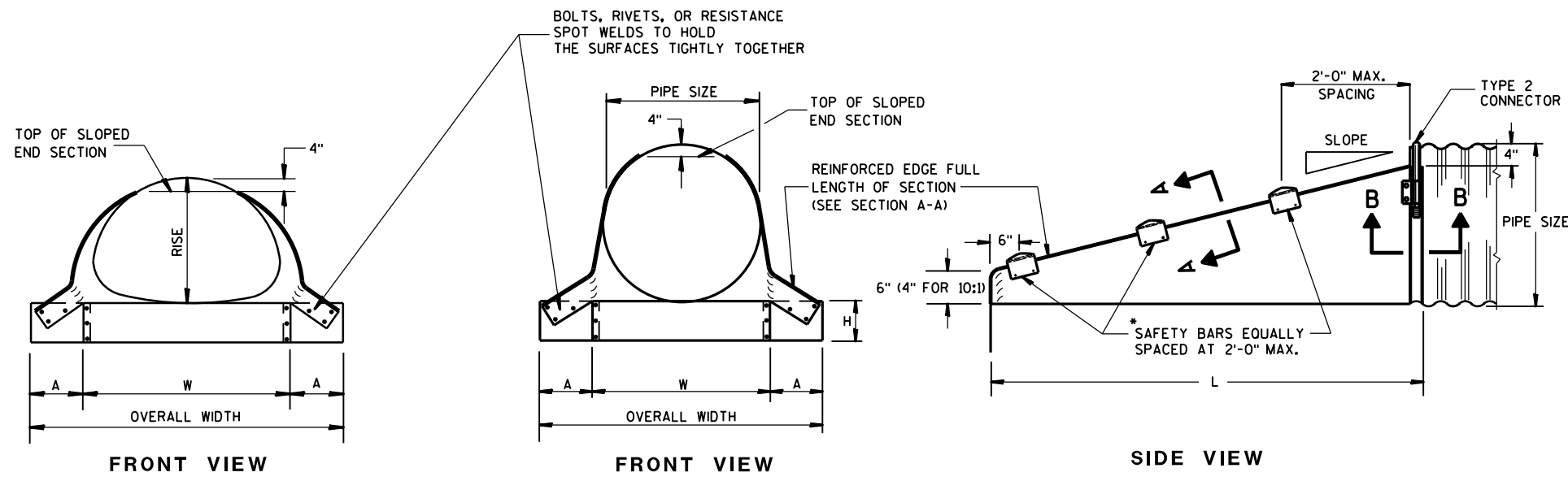


SDD 8F7 Steel Apron Endwalls for Culvert Pipe and Pipe Arch Sloped Side Drains



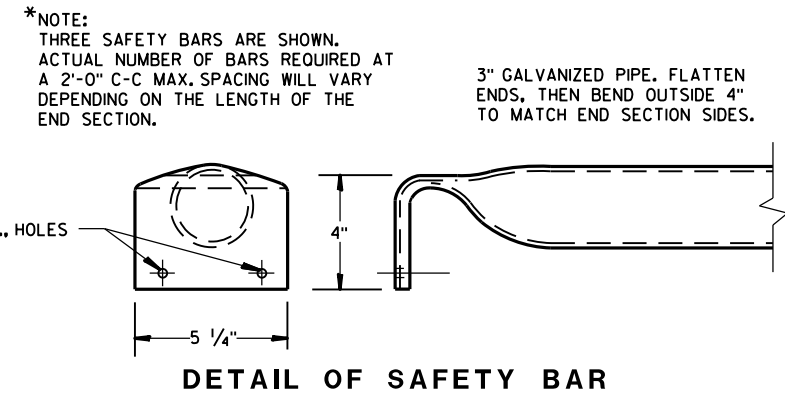
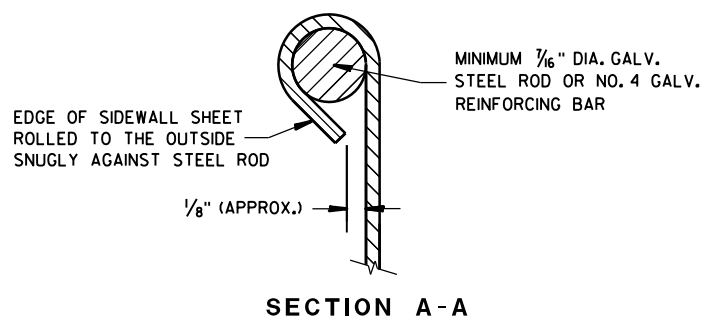
GENERAL NOTES

DETAILS OF CONSTRUCTION, MATERIALS AND WORKMANSHIP NOT SHOWN ON THIS DRAWING SHALL CONFORM TO THE PERTINENT REQUIREMENTS OF THE STANDARD SPECIFICATIONS AND THE APPLICABLE SPECIAL PROVISIONS.

SLOPED END SECTIONS SHALL CONFORM TO THE REQUIREMENTS OF THE STANDARD SPECIFICATIONS, SECTION 521 FOR STEEL APRON ENDWALLS.

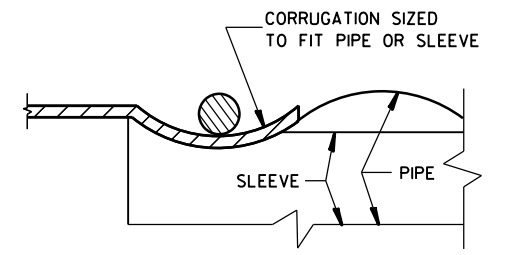
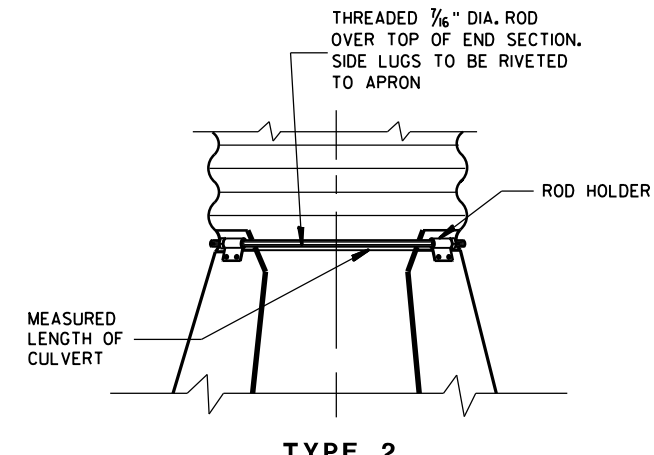
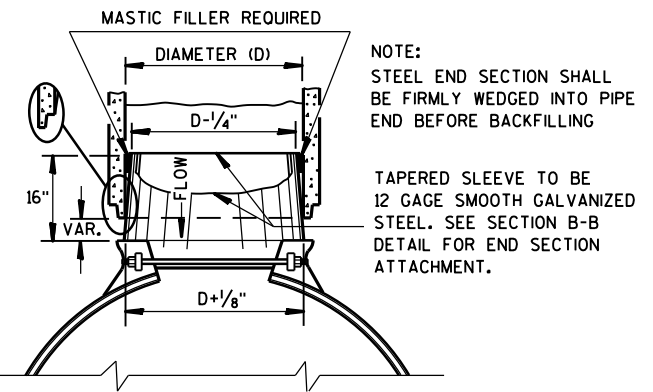
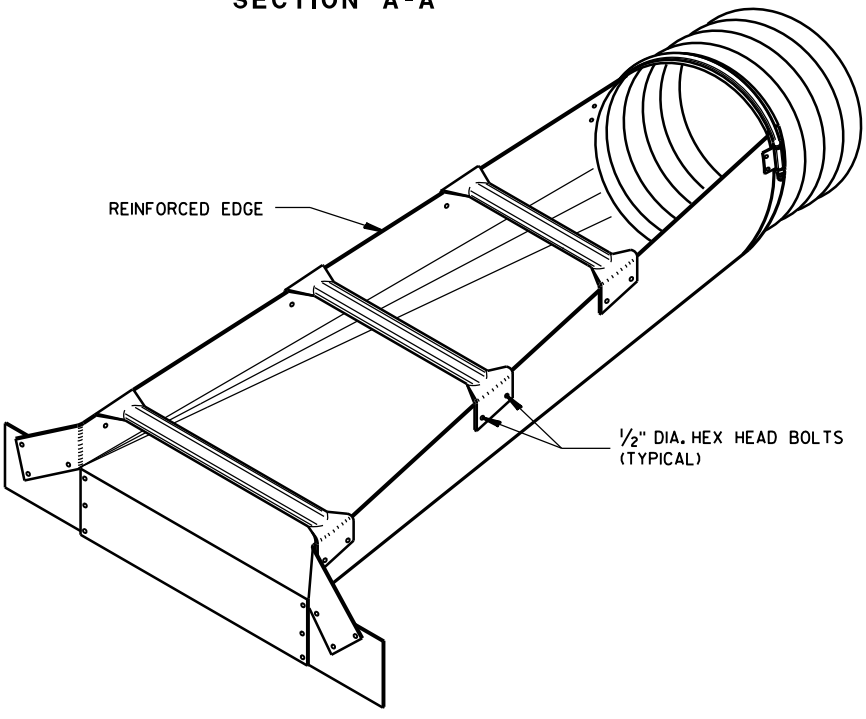
SAFETY BARS SHALL BE FABRICATED FROM GALVANIZED STEEL PIPE MEETING THE REQUIREMENTS OF ASTM A-53, GRADE B, SCHEDULE 40 OR APPROVED EQUAL.

STEEL APRON ENDWALLS FOR CULVERT PIPE SLOPED SIDE DRAINS											
PIPE DIA. (IN.)	MIN. THICK. (Inches)	DIMENSIONS (Inches)				L DIMENSIONS					
		A	H	W	OVERALL WIDTH	SLOPE	LENGTH INCHES	SLOPE	LENGTH INCHES	SLOPE	LENGTH INCHES
15	.064	8	6	21	37	4:1	20	6:1	30	10:1	70
18	.064	8	6	24	40	4:1	32	6:1	48	10:1	100
21	.064	8	6	27	43	4:1	44	6:1	66	10:1	130
24	.064	8	6	30	46	4:1	56	6:1	84	10:1	160
30	.109	12	9	36	60	4:1	80	6:1	120	10:1	220
36	.109	12	9	42	66	4:1	104	6:1	156	10:1	280
42	.109	16	12	48	80	4:1	128	6:1	192	—	—
48	.109	16	12	54	86	4:1	152	6:1	228	—	—
54	.109	16	12	60	92	4:1	176	6:1	264	—	—
60	.109	16	12	66	98	4:1	200	6:1	300	—	—



STEEL APRON ENDWALLS FOR PIPE ARCH SLOPED SIDE DRAINS													
EQUIV. DIA. (Inches)	(Inches)		MIN. THICK. (Inches) ①	DIMENSIONS (Inches)				L DIMENSIONS					
	SPAN	RISE		A	H	W	OVERALL WIDTH	SLOPE	LENGTH INCHES	SLOPE	LENGTH INCHES	SLOPE	LENGTH INCHES
15	17	13	.064 *	7	6	30	44	4:1	19	6:1	30	10:1 ②	70
18	21	15	.064 *	8	6	27	43	4:1	20	6:1	30	10:1	70
21	24	18	.064 *	8	6	30	46	4:1	32	6:1	48	10:1	100
24	28	20	.064 *	8	6	34	50	4:1	40	6:1	60	10:1	120
30	35	24	.079 *	12	9	41	65	4:1	56	6:1	84	10:1	160
36	42	29	.109 *	12	9	48	72	4:1	76	6:1	114	10:1	210
42	49	33	.109	16	12	55	87	4:1	92	6:1	138	—	—
48	57	38	.109	16	12	63	95	4:1	112	6:1	168	—	—
54	64	43	.109	16	12	70	102	4:1	132	6:1	198	—	—

① * MINIMUM THICKNESS OF ALL 10:1 SLOPED SIDE DRAINS IS 0.109".
 ② ACTUAL SLOPE GREATER THAN 10:1.



STEEL APRON ENDWALLS FOR CULVERT PIPE AND PIPE ARCH SLOPED SIDE DRAINS

STATE OF WISCONSIN
DEPARTMENT OF TRANSPORTATION

APPROVED
DATE 9/14/2012 /S/ Jerry H. Zogg
ROADWAY STANDARDS DEVELOPMENT ENGINEER

FHWA

ISOMETRIC VIEW

STEEL ADAPTER SLEEVE FOR CONCRETE PIPE

TYPE 2 CONNECTION DETAIL

*Steel Apron Endwalls for Culvert Pipe and Pipe Arch Sloped Side Drains***References:**[FDM 11-15-1](#)[FDM 11-40-1](#)

AASHTO Roadside Design Guide, Section 3.4

Bid items associated with this drawing:

<u>ITEM NUMBER</u>	<u>DESCRIPTION</u>	<u>UNIT</u>
521.1500 - 1699	Apron Endwalls for Culvert Pipe Sloped Side Drains Steel (size) (slope).....	EACH
521.1700 - 1899	Apron Endwalls for Pipe Arch Sloped Side Drains Steel (size) (slope).....	EACH

Standardized Special Provisions associated with this drawing:

<u>STSP NUMBER</u>	<u>TITLE</u>
NONE	

Other SDDs associated with this drawing:

NONE

Design Notes:

Evaluate the use of sloped sections on side drain culvert pipe and pipe arches located within the clear zone of the through highway where the side road or driveway has a 6:1 foreslope.

Review FDM Chapter 13 ([FDM 13-1](#)) and [FDM 11-45-30](#).

Contact Person:

Ed Lilla (608) 266-2312