



SDD 10A06 Electrical Details Ground Mount Light Poles Grounded Neutral System

GENERAL NOTES

DETAILS OF CONSTRUCTION AND WORKMANSHIP NOT SHOWN IN THIS DRAWING SHALL CONFORM TO THE PERTINENT REQUIREMENTS OF THE CONTRACT.

USE THIS DETAIL IN CONJUNCTION WITH THE DETAIL FOR ELECTRICAL HANDHOLE WIRING, SDD10A01.

USE TIME DELAY FUSE PER LUMINAIRE MANUFACTURER RECOMMENDATION.

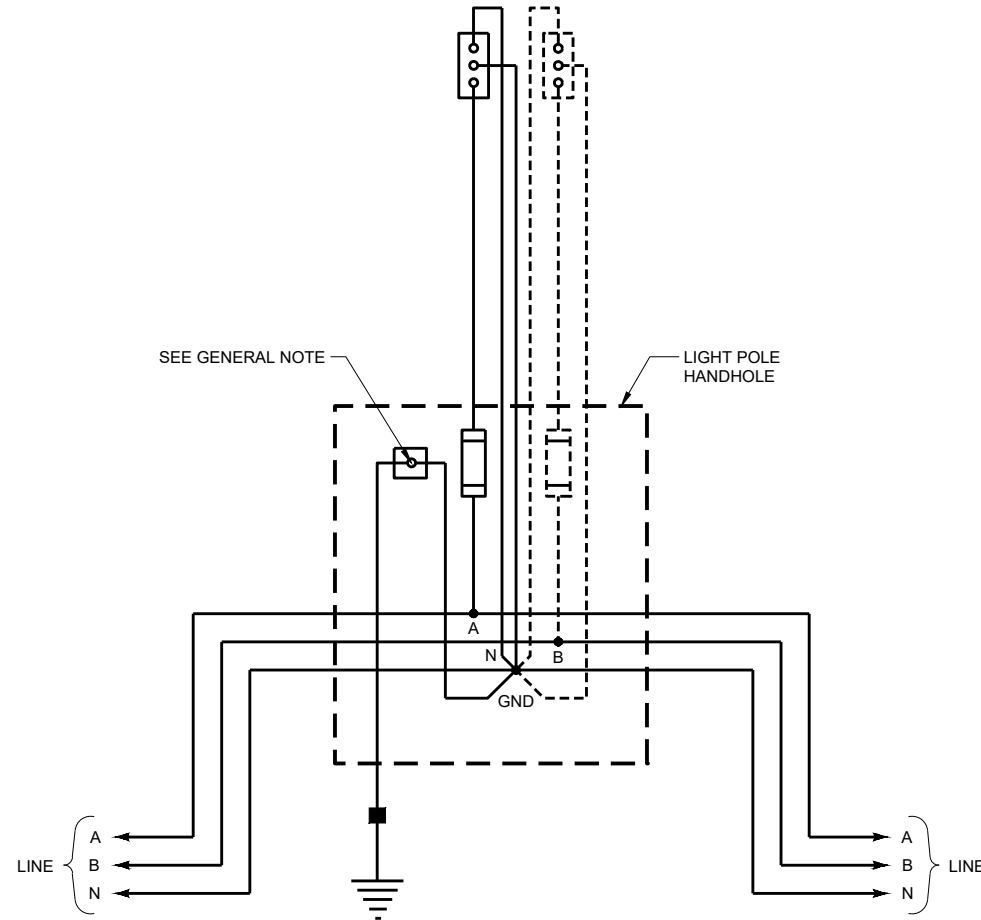
THE GROUNDING ELECTRODE CONDUCTOR SHALL BE CONTINUOUS WITHOUT SPLICES FROM THE GROUNDING ELECTRODE THROUGH THE HANDHOLE GROUNDING LUG TO THE CONNECTOR.

WIRING FOR SINGLE LUMINAIRE POLES IS SHOWN WITH SOLID LINES. WIRING FOR THE SECOND LUMINAIRE OF TWIN LUMINAIRE POLES IS SHOWN WITH DOTTED LINES.

THE PLANS WILL SHOW WHICH CIRCUIT LEG(S) ARE CONNECTED TO EACH INSTALLATION.

LEGEND

A,B,X,Y,Z	UNGROUNDING CIRCUIT CONDUCTORS
N	GROUNDING CIRCUIT CONDUCTORS
GND	EQUIPMENT GROUNDING CONDUCTOR
P	POLE (ELECTRICAL CIRCUIT)
ϕ	PHASE (ELECTRICAL CURRENT)
	HANDHOLE GROUND LUG
	SINGLE-POLE (1P) FUSE ASSEMBLY
	UNFUSED LUMINAIRE
	EQUIPMENT GROUNDING ELECTRODE
○	TERMINAL
●	SPLICE
—	CONDUCTOR
■	EXOTHERMIC WELD



TYPICAL WIRING DIAGRAM
 GROUNDING NEUTRAL SYSTEM
 1 - ϕ 240 / 480VAC 3 WIRE OR 480VAC 2 WIRE

ELECTRICAL DETAILS
GROUND MOUNT LIGHT POLES
GROUNDING NEUTRAL SYSTEM

STATE OF WISCONSIN
 DEPARTMENT OF TRANSPORTATION

APPROVED
 November 2018 /S/ Ahmet Demirelek
 DATE STATE ELECTRICAL ENGINEER

FHWA

Electrical Details Ground Mount Light Poles Grounded Neutral Systems

References:

[FDM15-5 Attachment 30.5](#) and [30.6](#) for conventional symbols.
[Standard Spec. 655](#) Electrical Wiring

Bid items associated with this drawing:

<u>ITEM NUMBER</u>	<u>DESCRIPTION</u>	<u>UNIT</u>
655.0600 - 0699	Electrical Wire Lighting (AWG)	EACH

Standardized Special Provisions associated with this drawing:

<u>STSP NUMBER</u>	<u>TITLE</u>
NONE	

Other SDDs associated with this drawing:

[SDD 10A1](#) Electrical Handhole Wiring

Design Notes:

This SDD is generally used for municipal work or for the maintenance of existing State systems constructed with the grounded neutral wiring method. The State no longer uses this wiring method for new systems. Use this SDD in conjunction with the SDD for Electrical Handhole Wiring.

Contact Person:

Ahmet Demirbilek (414) 220-6801
(414) 322-9606 (Mobile)