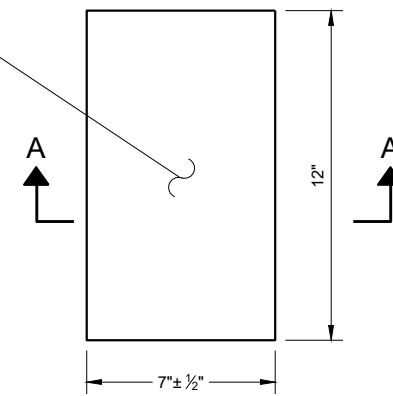


**SECTION A - A**

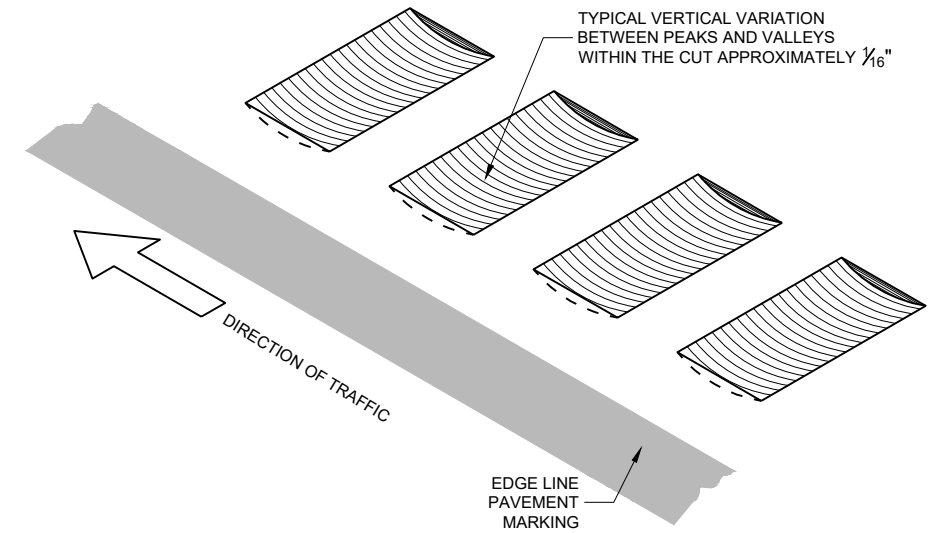


**GENERAL NOTES**

SDD 13A5, SHEET "b" SHOWS THE LOCATION OF THE RUMBLE STRIPS AT RAMP AND GORE LOCATIONS.

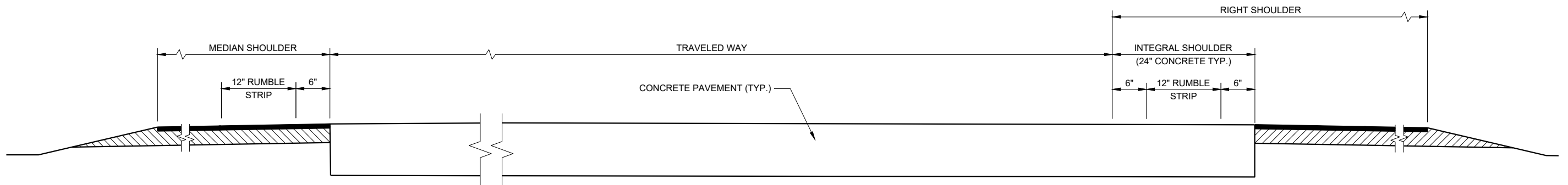
**RUMBLE STRIPS ON EXPRESSWAYS:**  
DO NOT INSTALL SHOULDER RUMBLE STRIPS ACROSS SIDE ROAD INTERSECTIONS, COMMERCIAL AND PRIVATE DRIVEWAYS, ADJACENT TO RIGHT TURN LANES, LEFT TURN LANES, TURN LANE TAPERS, 25' IN ADVANCE OF BRIDGE DECKS, 25' IN ADVANCE OF BRIDGE APPROACHES, OR 100 FEET IN ADVANCE OF RAILROAD CROSSINGS.

- ① CONCRETE PAVEMENT - RUMBLE STRIPS SHALL BE A MINIMUM OF 6 INCHES AWAY FROM TRANSVERSE JOINTS.



**ISOMETRIC**

**PLACEMENT DETAIL FOR RUMBLE STRIP**

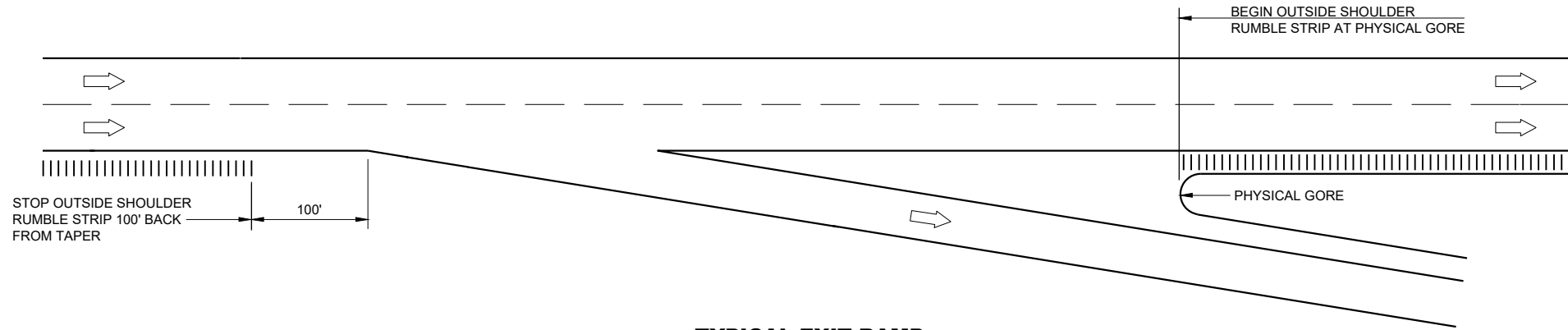


**SECTION VIEW**

**TYPICAL SHOULDER RUMBLE STRIPS  
(ONE ROADWAY IS SHOWN)**

**SHOULDER RUMBLE STRIPS,  
DIVIDED ROADWAY**

STATE OF WISCONSIN  
DEPARTMENT OF TRANSPORTATION



**TYPICAL EXIT RAMP**

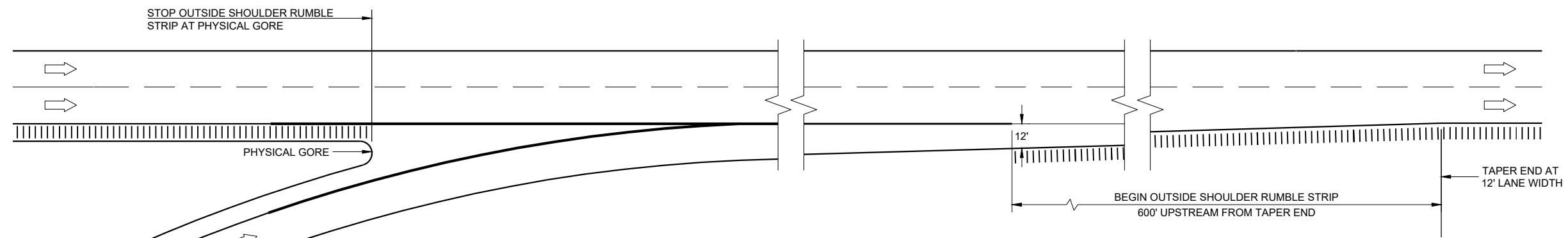
**GENERAL NOTES**

NO RUMBLE STRIP ON EXIT, DIRECTIONAL OR ENTRANCE RAMP, EXCEPT NEAR THE ENTRANCE TAPER END AND ALONG THE PARALLEL RAMP AREA AS SHOWN.

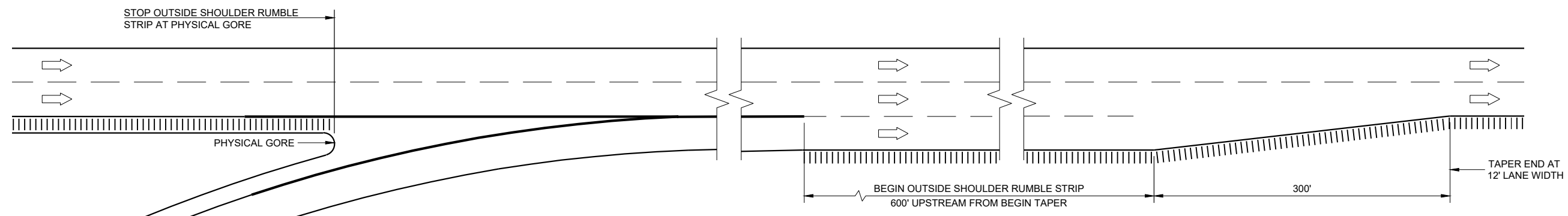
RUMBLE STRIPS ON EXPRESSWAYS:  
DO NOT INSTALL SHOULDER RUMBLE STRIPS ACROSS SIDE ROAD INTERSECTIONS, COMMERCIAL AND PRIVATE DRIVEWAYS, ADJACENT TO RIGHT TURN LANES, LEFT TURN LANES, TURN LANE TAPERS, 25' IN ADVANCE OF BRIDGE DECKS, 25' IN ADVANCE OF BRIDGE APPROACHES, OR 100 FEET IN ADVANCE OF RAILROAD CROSSINGS.

**LEGEND**

➡ DIRECTION OF TRAFFIC



**TYPICAL TAPERED ENTRANCE RAMP  
RAMP AND GORE SHOULDER RUMBLE STRIP LOCATIONS**



**TYPICAL PARALLEL ENTRANCE RAMP  
RAMP AND GORE SHOULDER RUMBLE STRIP LOCATIONS**

6

6

SDD 13A05-06b

SDD 13A05-06b

**SHOULDER RUMBLE STRIPS,  
DIVIDED ROADWAY**

STATE OF WISCONSIN  
DEPARTMENT OF TRANSPORTATION

APPROVED  
DATE: May 2023 /S/ Rodney Taylor  
UNIT SUPERVISOR  
FHWA

Shoulder Rumble Strips, Divided Roadway

References:

[FDM 11-15-1.8](#)

[FDM 11-40-1.8](#)

Bid items associated with this drawing:

<u>ITEM NUMBER</u>	<u>DESCRIPTION</u>	<u>UNIT</u>
602.3210	Concrete Shoulder Rumble Strips, Divided Roadway .....	LF
465.0510	Asphaltic Shoulder Rumble Strips, Divided Roadway .....	LF

Standardized Special Provisions associated with this drawing:

NONE

Other SDDs associated with this drawing:

Include SDDs 13A5 sheets "a" and "b" together in plan sets.

Design Notes:

This SDD is required on all projects that include **concrete or asphaltic rumble strips on divided roadway.**

Contact Person:

John Jenkins (608) 267-6975

*Shoulder Rumble Strip, Milling*

**References:**

Refer to 13A5 sheet "a".

**Bid items associated with this drawing:**

<u>ITEM NUMBER</u>	<u>DESCRIPTION</u>	<u>UNIT</u>
Refer to 13A5 sheet "a"		

**Standardized Special Provisions associated with this drawing:**

NONE

**Other SDDs associated with this drawing:**

Include SDDs 13A5 sheets "a" and "b" together in plan sets.

**Design Notes:**

Refer to 13A5 sheet "a".

**Contact Person:**

John Jenkins (608) 267-6975