

LEGEND

-  SIGN ON PERMANENT SUPPORT
-  TRAFFIC CONTROL DRUM
-  DELINEATOR, FLEXIBLE/TUBULAR MARKER
-  TEMPORARY DELINEATOR (STEEL POST W/SINGLE DELINEATOR)
-  PORTABLE CRASH CUSHION
-  CONCRETE BARRIER TEMPORARY PRECAST
-  REMOVE PAVEMENT MARKINGS
-  DIRECTION OF TRAFFIC

GENERAL NOTES

ALL SIGNS ARE 48"X48" UNLESS OTHERWISE NOTED.

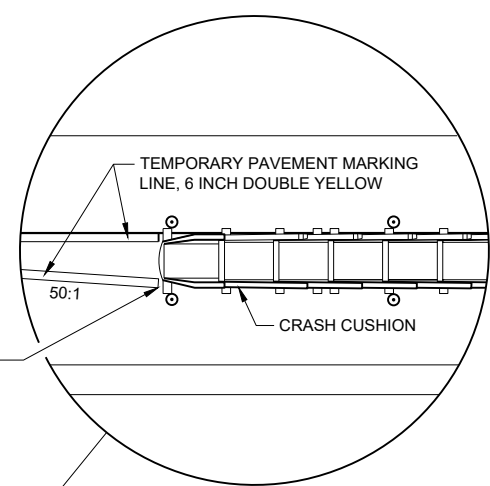
"WO" SIGN IS THE SAME AS "W" SIGN EXCEPT THE BACKGROUND IS ORANGE.

ANY SIGNS TEMPORARY OR EXISTING, WHICH CONFLICT WITH THE TRAFFIC CONTROL "IN USE" SHALL BE REMOVED OR COVERED AS NEEDED AND AS APPROVED BY THE ENGINEER. NO WARNING LIGHTS SHALL BE WORKING ON COVERED OR "DOWNED" SIGNS.

THE EXACT NUMBER, LOCATION, AND SPACING OF ALL SIGNS AND DEVICES SHALL BE ADJUSTED TO FIT FIELD CONDITIONS AS APPROVED BY THE ENGINEER.

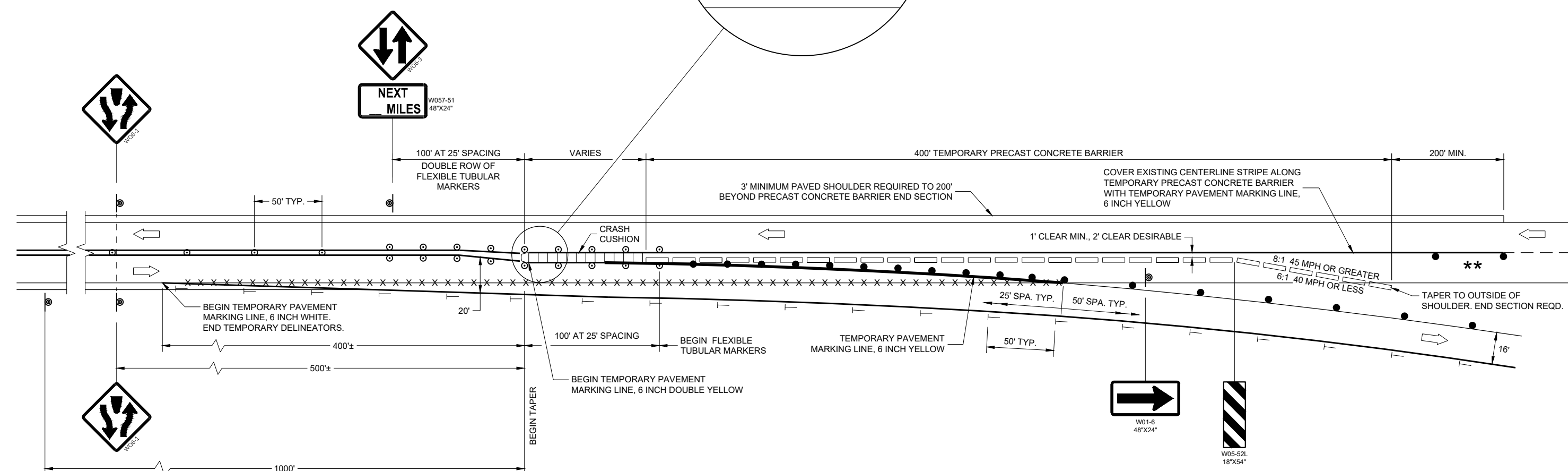
THE SPACING BETWEEN SIGNS SHOULD BE ADJUSTED TO NOT CONFLICT WITH AND TO PROVIDE A MINIMUM OF 200 FEET (500' DESIRABLE) DISTANCE TO EXISTING SIGNS.

** SEE SDD 15D12 FOR LANE CLOSURE DETAILS.



6

6



SDD 15D05-06

SDD 15D05-06

**TRAFFIC CONTROL,
SINGLE LANE CROSSOVER
ENTRANCE WITH BARRIER**

STATE OF WISCONSIN
DEPARTMENT OF TRANSPORTATION

APPROVED
DATE May 2023 /S/ Andrew Heidtke
WORK ZONE ENGINEER

FHWA

Traffic Control, Single Lane Crossover Entrance with Barrier

References:

Part VI from the Manual on Uniform Traffic Control Devices

[FDM 11-50-20](#)**Bid items associated with this drawing:**

<u>ITEM NUMBER</u>	<u>DESCRIPTION</u>	<u>UNIT</u>
603.8000	Concrete Barrier Temporary Precast Delivered.....	LF
603.8125	Concrete Barrier Temporary Precast Installed	LF
614.0905	Crash Cushions Temporary.....	EACH
633.1100	Delineators Temporary.....	EACH
643.0300	Traffic Control Drums	DAY
643.0500	Traffic Control Flexible Tubular Marker Posts	EACH
643.0600	Traffic Control Flexible Tubular Marker Bases	EACH
643.0715	Traffic Control Warning Lights Type C.....	DAY
643.0900	Traffic Control Signs.....	DAY
643.3200-3299	Temporary Marking Line (Material) 6-Inch.....	LF
646.1000-1099	Marking Line (Material) 4-Inch.....	LF
646.2000-2099	Marking Line (Material) 6-Inch.....	LF
646.9000	Marking Removal Line 4-Inch.....	LF
646.9010	Marking Removal Line Water Blasting 4-Inch.....	LF
646.9060	Marking Removal Line 6-Inch.....	LF
646.9066	Marking Removal Line Water Blasting 6-Inch.....	LF

Standardized Special Provisions associated with this drawing:

<u>STSP NUMBER</u>	<u>TITLE</u>
NONE	

Other SDDs associated with this drawing:

SDD 14B7	Concrete Barrier Temporary Precast
SDD 15A4	Delineator and Delineator Post
SDD 15C11	Channelizing Devices
SDD 15D6	Traffic Control, Two Lane Two Way Operation
SDD 15D7	Traffic Control, Temporary Exit Ramp Crossover
SDD 15D8	Traffic Control, Temporary Entrance Ramp Crossover
SDD 15D11	Traffic Control, Single Lane Crossover
SDD 5D12	Traffic Control (Lane Closures, Speeds Reduction)

Design Notes:**Contact Person:**

Andrew Heidtke (414) 220-6802