


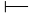
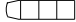

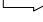
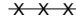


LEGEND

-  SIGN ON PERMANENT SUPPORT
-  TRAFFIC CONTROL DRUM
-  DELINEATOR FLEXIBLE / TUBULAR MARKER
-  TEMPORARY DELINEATOR (STEEL POST DELINEATOR) COLOR OF DELINEATOR SHALL MATCH THE RESPECTIVE EDGE LINE MARKING
-  PORTABLE CRASH CUSHION
-  CONCRETE BARRIER TEMPORARY PRECAST
-  DIRECTION OF TRAFFIC
-  REMOVE PAVEMENT MARKINGS

GENERAL NOTES

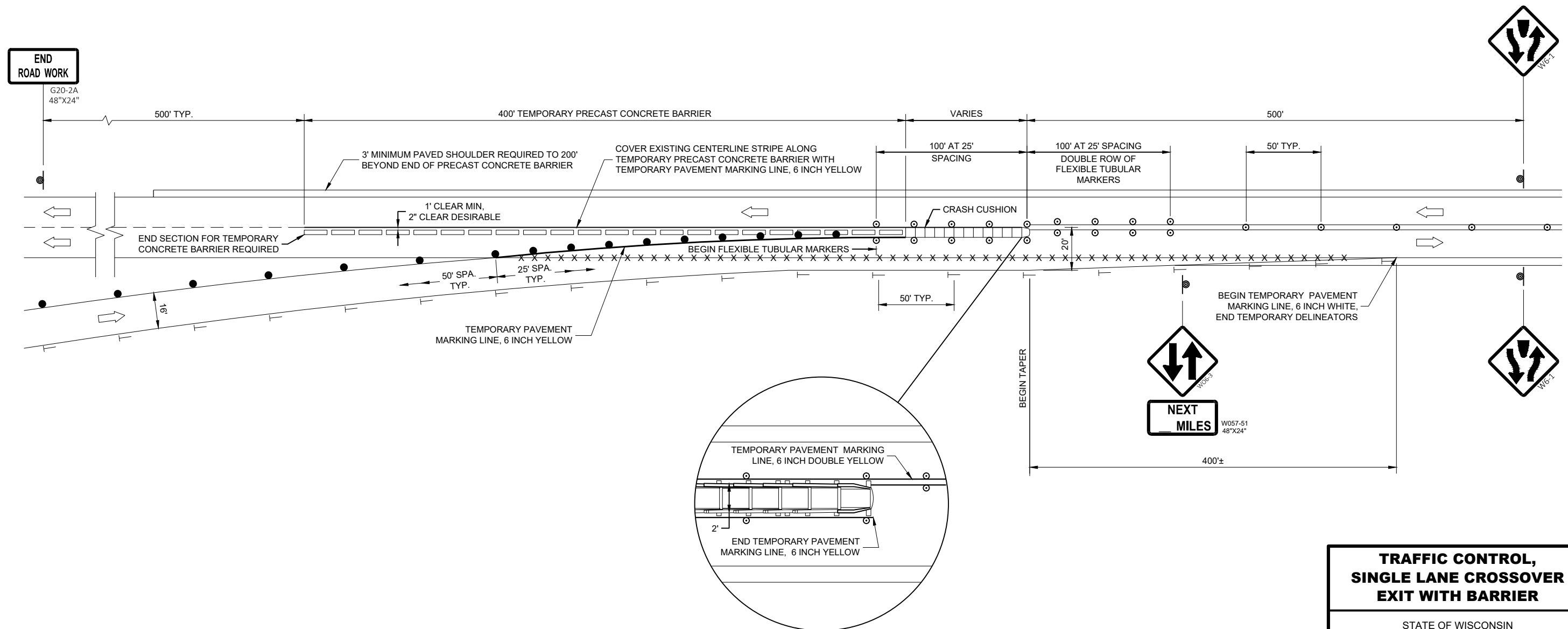
ALL SIGNS ARE 48"x48" UNLESS OTHERWISE NOTED.

"WO" SIGN IS THE SAME AS "W" SIGN EXCEPT THE BACKGROUND IS ORANGE.

ANY SIGNS TEMPORARY OR EXISTING, WHICH CONFLICT WITH THE TRAFFIC CONTROL "IN USE" SHALL BE REMOVED OR COVERED AS NEEDED AND AS APPROVED BY THE ENGINEER. NO WARNING LIGHTS SHALL BE WORKING ON COVERED OR "DOWNED" SIGNS.

THE EXACT NUMBER, LOCATION, AND SPACING OF ALL SIGNS AND DEVICES SHALL BE ADJUSTED TO FIT FIELD CONDITIONS AS APPROVED BY THE ENGINEER.

THE SPACING BETWEEN SIGNS SHOULD BE ADJUSTED TO NOT CONFLICT WITH AND TO PROVIDE A MINIMUM OF 200 FEET (500' DESIRABLE) DISTANCE TO EXISTING SIGNS.



6

6

SDD 15D10-06

SDD 15D10-06

**TRAFFIC CONTROL,
SINGLE LANE CROSSOVER
EXIT WITH BARRIER**

STATE OF WISCONSIN
DEPARTMENT OF TRANSPORTATION

APPROVED
DATE May 2023 /S/ Andrew Heidtke
WORK ZONE ENGINEER

FHWA

Traffic Control, Single Lane Crossover Exit with Barrier

References:

Part VI from the Manual on Uniform - Traffic Control Devices

[FDM 11-50-20](#)**Bid items associated with this drawing:**

<u>ITEM NUMBER</u>	<u>Description</u>	<u>UNIT</u>
603.8000	Concrete Barrier Temporary Precast Delivered.....	LF
603.8125	Concrete Barrier Temporary Precast Installed	LF
614.0905	Crash Cushions Temporary.....	EACH
633.1100	Delineators Temporary.....	EACH
643.0300	Traffic Control Drums	DAY
643.0500	Traffic Control Flexible Tubular Marker Posts	EACH
643.0600	Traffic Control Flexible Tubular Marker Bases	EACH
643.0900	Traffic Control Signs.....	DAY
643.0910	Traffic Control Covering Signs Type I.....	EACH
643.0920	Traffic Control Covering Signs Type II.....	EACH
643.3200-3299	Temporary Marking Line (Material) 6-Inch.....	LF
646.1000-1099	Marking Line (Material) 4-Inch.....	LF
646.2000-2099	Marking Line (Material) 6-Inch.....	LF
646.9000	Marking Removal Line 4-Inch.....	LF
646.9060	Marking Removal Line 6-Inch.....	LF

Standardized Special Provisions associated with this drawing:

<u>STSP NUMBER</u>	<u>TITLE</u>
NONE	

Other SDDs associated with this drawing:

SDD 14B7	Concrete Barrier Temporary Precast
SDD 15A4	Delineator and Delineator Post
SDD 15C11	Channelizing Devices
SDD 15D6	Traffic Control, Two Lane Two Way Operation
SDD 15D11	Traffic Control, Single Lane Crossover

Design Notes:

The SDD Traffic Control Single Lane Crossover Exit may be used in place of this drawing. The decision to use barrier is dependent on traffic volumes, geometrics and project duration.

Cover existing and permanent signs to prevent conflicts with detours or other traffic operations. In lieu of covering signs, the contractor may choose to remove and reinstall them.

Contact Person:

Andrew Heidtke (414) 220-6802