

LEGEND

-  SIGN ON PERMANENT SUPPORT
-  SIGN ON TEMPORARY SUPPORT
-  TRAFFIC CONTROL DRUM
-  TRAFFIC CONTROL DRUM WITH TYPE "C" STEADY BURN LIGHT
-  REMOVING PAVEMENT MARKING (SEE GENERAL NOTES)
-  TYPE III BARRICADE WITH ATTACHED SIGN
-  DIRECTION OF TRAFFIC

GENERAL NOTES

THE INSTALLATIONS SHOWN ON THIS SHEET ARE TYPICAL EXAMPLES AND ARE NOT INTENDED TO REPRESENT ANY PARTICULAR RAMP. AT SPECIFIC FIELD LOCATIONS, SIMILAR INSTALLATIONS SHALL BE USED AND ADJUSTED TO THE GEOMETRICS OF THE RAMP AS COORDINATED WITH THE ENGINEER.

THE EXACT NUMBER, LOCATION, AND SPACING OF ALL SIGNS AND DEVICES SHALL BE ADJUSTED TO FIT FIELD CONDITIONS AS APPROVED BY THE ENGINEER.

THE SPACING BETWEEN TRAFFIC CONTROL SIGNS SHOULD BE ADJUSTED TO NOT CONFLICT WITH AND SHOULD PROVIDE A MINIMUM OF 200 FEET (500 FEET DESIRABLE) CLEARANCE TO EXISTING SIGNS THAT WILL REMAIN IN PLACE.

ALL SIGNS ARE 48" X 48" UNLESS OTHERWISE NOTED.

"WO" IS THE SAME AS "W" EXCEPT THE BACKGROUND IS ORANGE.

SEE SEPARATE LANE CLOSURE DETAIL FOR TYPICAL SPACING OF TYPE III BARRICADES AND R11-2L "LANE CLOSED" SIGNS.

SIGNS THAT WILL BE IN PLACE LESS THAN 7 CONSECUTIVE DAYS AND NIGHTS OR THAT WILL BE PLACED IN A CLOSED LANE, MAY BE MOUNTED ON PORTABLE SUPPORTS. USE SUPPORTS THAT PROVIDE A MINIMUM OF 5 FEET FROM THE BOTTOM OF THE SIGN TO THE PAVEMENT.

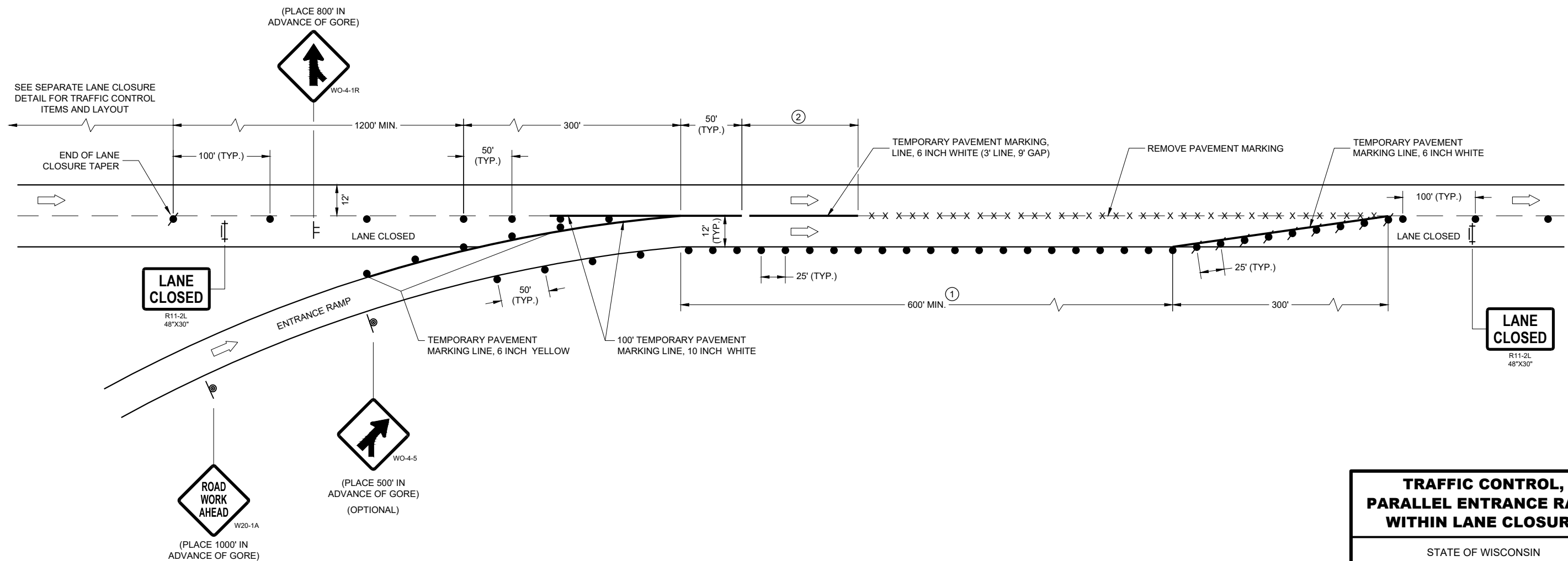
IF INDICATED IN MISCELLANEOUS QUANTITIES, SUBSTITUTE FLEXIBLE TUBULAR MARKERS FOR DRUMS IN THE GORE BETWEEN THE ENTRANCE RAMP AND MAINLINE TRAFFIC.

ANY SIGNS TEMPORARY OR EXISTING, WHICH CONFLICT WITH TRAFFIC CONTROL "IN USE" SHALL BE REMOVED OR COVERED AS NEEDED AND AS APPROVED BY THE ENGINEER.

REMOVE PAVEMENT MARKINGS AND PLACE TEMPORARY PAVEMENT MARKING LINES IF LANE CLOSURE IS TO BE IN PLACE FOR 4 OR MORE CONTINUOUS DAYS AND NIGHTS.

WARNING LIGHTS ARE NOT REQUIRED IF THE LANE CLOSURE IS A DAYTIME ONLY OPERATION.

- ① EXTEND THE LENGTH OF THE MERGE ARE IF THE ENTERING (DESIGN) SPEED IS LESS THAN 50MPH OR IF THE MAINLINE GRADE EXCEEDS ±2.2%.
- ② END TEMPORARY PAVEMENT MARKING LINE AT ½ THE LENGTH OF FULL WIDTH OF THE ACCELERATION LANE.



6


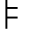


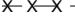

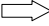
6

SDD 15D15-07a

SDD 15D15-07a

TRAFFIC CONTROL, PARALLEL ENTRANCE RAMP WITHIN LANE CLOSURE	
STATE OF WISCONSIN DEPARTMENT OF TRANSPORTATION	
APPROVED May 2023 DATE	/S/ Andrew Heidtke WORK ZONE ENGINEER
FHWA	

LEGEND

-  SIGN ON PERMANENT SUPPORT
-  SIGN ON TEMPORARY SUPPORT
-  TRAFFIC CONTROL DRUM
-  TRAFFIC CONTROL DRUM WITH TYPE "C" STEADY BURN LIGHT
-  REMOVING PAVEMENT MARKING (SEE GENERAL NOTES)
-  TYPE III BARRICADE WITH ATTACHED SIGN
-  DIRECTION OF TRAFFIC

GENERAL NOTES

THE INSTALLATIONS SHOWN ON THIS SHEET ARE TYPICAL EXAMPLES AND ARE NOT INTENDED TO REPRESENT ANY PARTICULAR RAMP. AT SPECIFIC FIELD LOCATIONS, SIMILAR INSTALLATIONS SHALL BE USED AND ADJUSTED TO THE GEOMETRICS OF THE RAMP AS COORDINATED WITH THE ENGINEER.

THE EXACT NUMBER, LOCATION, AND SPACING OF ALL SIGNS AND DEVICES SHALL BE ADJUSTED TO FIT FIELD CONDITIONS AS APPROVED BY THE ENGINEER.

THE SPACING BETWEEN TRAFFIC CONTROL SIGNS SHOULD BE ADJUSTED TO NOT CONFLICT WITH AND SHOULD PROVIDE A MINIMUM OF 200 FEET (500 FEET DESIRABLE) CLEARANCE TO EXISTING SIGNS THAT WILL REMAIN IN PLACE.

ALL SIGNS ARE 48" X 48" UNLESS OTHERWISE NOTED.

"WO" IS THE SAME AS "W" EXCEPT THE BACKGROUND IS ORANGE.

SEE SEPARATE LANE CLOSURE DETAIL FOR TYPICAL SPACING OF TYPE III BARRICADES AND R11-2L "LANE CLOSED" SIGNS.

SIGNS THAT WILL BE IN PLACE LESS THAN 7 CONSECUTIVE DAYS AND NIGHTS OR THAT WILL BE PLACED IN A CLOSED LANE, MAY BE MOUNTED ON PORTABLE SUPPORTS.

IF INDICATED IN MISCELLANEOUS QUANTITIES, SUBSTITUTE FLEXIBLE TUBULAR MARKERS /OR DRUMS IN THE GORE BETWEEN THE EXIT RAMP AND MAINLINE TRAFFIC.

ANY SIGNS TEMPORARY OR EXISTING, WHICH CONFLICT WITH TRAFFIC CONTROL "IN USE" SHALL BE REMOVED OR COVERED AS NEEDED AND AS APPROVED BY THE ENGINEER.

REMOVE PAVEMENT MARKINGS AND PLACE TEMPORARY PAVEMENT MARKING LINES IF LANE CLOSURE IS TO BE IN PLACE FOR 4 OR MORE CONTINUOUS DAYS AND NIGHTS.

WARNING LIGHTS ARE NOT REQUIRED IF THE LANE CLOSURE IS A DAYTIME ONLY OPERATION.

- ① EXTEND THE LENGTH OF THE MERGE AREA IF THE ENTERING (DESIGN) SPEED OF THE RAMP IS LESS THAN 50 MPH OR IF THE MAINLINE GRADE EXCEEDS ±2.2%.
- ② END TEMPORARY PAVEMENT MARKING LINE AT ½ THE LENGTH OF FULL WIDTH OF THE ACCELERATION LANE.

(PLACE 800' IN ADVANCE OF GORE)



TEMPORARY PAVEMENT MARKING LINE, 10 INCH WHITE

REPAVE EXISTING SHOULDER IF INDICATED ELSEWHERE IN PLANS

50:1 TAPER

LANE CLOSED

TEMPORARY PAVEMENT MARKING LINE, 6 INCH WHITE (3' LINE, 9' GAP)

LANE CLOSED

TEMPORARY PAVEMENT MARKING LINE, 6 INCH WHITE

RAMP PAVEMENT

TYPICAL 5' ASPHALT SHOULDER

TYPICAL 3' GRAVEL SHOULDER

REPAVE EXISTING SHOULDER IF INDICATED ELSEWHERE IN PLANS

TEMPORARY PAVEMENT WIDENING REQUIRED

TEMPORARY PAVEMENT DETAIL

(EXISTING RAMP DIMENSIONS MAY VARY, ADJUST TEMPORARY PAVEMENT ACCORDINGLY)

TRAFFIC CONTROL, ENTRANCE RAMP WITHIN LANE CLOSURE


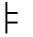



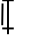

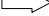
STATE OF WISCONSIN
DEPARTMENT OF TRANSPORTATION

APPROVED
DATE: May 2023 /S/ Andrew Heidtke
WORK ZONE ENGINEER

SDD 15D15-07b

SDD 15D15-07b

LEGEND

-  SIGN ON PERMANENT SUPPORT
-  SIGN ON TEMPORARY SUPPORT
-  TRAFFIC CONTROL DRUM
-  TRAFFIC CONTROL DRUM WITH TYPE "C" STEADY BURN LIGHT
-  REMOVING PAVEMENT MARKING (SEE GENERAL NOTES)
-  TYPE III BARRICADE WITH ATTACHED SIGN
-  FLAGS, 16" X 16" MIN., ORANGE
-  DIRECTION OF TRAFFIC

GENERAL NOTES

THE INSTALLATIONS SHOWN ON THIS SHEET ARE TYPICAL EXAMPLES AND ARE NOT INTENDED TO REPRESENT ANY PARTICULAR RAMP. AT SPECIFIC FIELD LOCATIONS, SIMILAR INSTALLATIONS SHALL BE USED AND ADJUSTED TO THE GEOMETRICS OF THE RAMP AS COORDINATED WITH THE ENGINEER.

THE EXACT NUMBER, LOCATION, AND SPACING OF ALL SIGNS AND DEVICES SHALL BE ADJUSTED TO FIT FIELD CONDITIONS AS APPROVED BY THE ENGINEER.

THE SPACING BETWEEN TRAFFIC CONTROL SIGNS SHOULD BE ADJUSTED TO NOT CONFLICT WITH AND SHOULD PROVIDE A MINIMUM OF 200 FEET (500 FEET DESIRABLE) CLEARANCE TO EXISTING SIGNS THAT WILL REMAIN IN PLACE.

ALL SIGNS ARE 48" X 48" UNLESS OTHERWISE NOTED.

"WO" IS THE SAME AS "W" EXCEPT THE BACKGROUND IS ORANGE.

SEE SEPARATE LANE CLOSURE DETAIL FOR TYPICAL SPACING OF TYPE III BARRICADES AND R11-2L "LANE CLOSED" SIGNS.

YIELD SIGN AND WARNING SIGNS ON ENTRANCE RAMP ARE ALSO APPROPRIATE FOR CLOSURE OF THE MAINLINE LEFT LANE. OMIT THE YIELD SIGN IF MORE THAN ONE LANE REMAINS OPEN ON THE MAINLINE AND THE RAMP TAPER IS AT LEAST AS LONG AS THE NORMAL ENTRANCE RAMP TAPER AT THE SITE.

SIGNS THAT WILL BE IN PLACE LESS THAN 7 CONSECUTIVE DAYS AND NIGHTS OR THAT WILL BE PLACED IN A CLOSED LANE, MAY BE MOUNTED ON PORTABLE SUPPORTS. USE SUPPORTS THAT PROVIDE A MINIMUM OF 5 FEET FROM THE BOTTOM OF THE SIGN TO THE PAVEMENT.

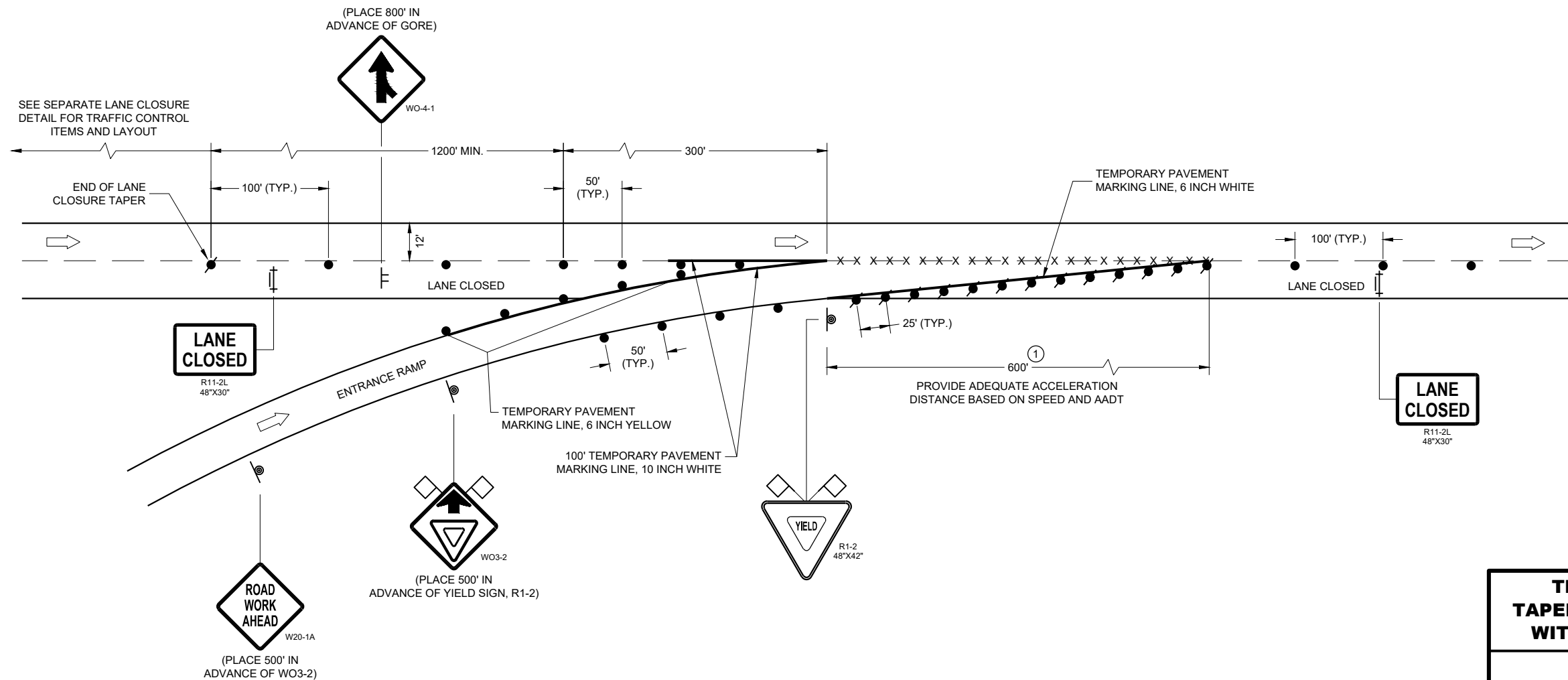
IF INDICATED IN MISCELLANEOUS QUANTITIES, SUBSTITUTE FLEXIBLE TUBULAR MARKERS FOR DRUMS IN THE GORE BETWEEN THE ENTRANCE RAMP AND MAINLINE TRAFFIC.

ANY SIGNS TEMPORARY OR EXISTING, WHICH CONFLICT WITH TRAFFIC CONTROL "IN USE" SHALL BE REMOVED OR COVERED AS NEEDED AND AS APPROVED BY THE ENGINEER.

REMOVE PAVEMENT MARKINGS AND PLACE TEMPORARY PAVEMENT MARKING LINES IF LANE CLOSURE IS TO BE IN PLACE FOR 4 OR MORE CONTINUOUS DAYS AND NIGHTS.

WARNING LIGHTS ARE NOT REQUIRED IF THE LANE CLOSURE IS A DAYTIME ONLY OPERATION.

① CONSULT WITH REGIONAL WORK ZONE ENGINEER IF NEED TO REDUCE LENGTH EXISTS.



6

6

SDD 15D15-07c

SDD 15D15-07c

**TRAFFIC CONTROL,
TAPERED ENTRANCE RAMP
WITHIN LANE CLOSURE**

STATE OF WISCONSIN
DEPARTMENT OF TRANSPORTATION

APPROVED
May 2023 /S/ Andrew Heidtke
DATE WORK ZONE ENGINEER

FHWA

LEGEND

- ⊙ SIGN ON PERMANENT SUPPORT
- ⊞ SIGN ON TEMPORARY SUPPORT
- TRAFFIC CONTROL DRUM
- TRAFFIC CONTROL DRUM WITH TYPE "C" STEADY BURN LIGHT
- ×-×-× REMOVING PAVEMENT MARKING (SEE GENERAL NOTES)
- ⊞ TYPE III BARRICADE WITH ATTACHED SIGN
- ➡ DIRECTION OF TRAFFIC

GENERAL NOTES

THE INSTALLATIONS SHOWN ON THIS SHEET ARE TYPICAL EXAMPLES AND ARE NOT INTENDED TO REPRESENT ANY PARTICULAR RAMP. AT SPECIFIC FIELD LOCATIONS, SIMILAR INSTALLATIONS SHALL BE USED AND ADJUSTED TO THE GEOMETRICS OF THE RAMP AS COORDINATED WITH THE ENGINEER.

THE EXACT NUMBER, LOCATION, AND SPACING OF ALL SIGNS AND DEVICES SHALL BE ADJUSTED TO FIT FIELD CONDITIONS AS APPROVED BY THE ENGINEER.

THE SPACING BETWEEN TRAFFIC CONTROL SIGNS SHOULD BE ADJUSTED TO NOT CONFLICT WITH AND SHOULD PROVIDE A MINIMUM OF 200 FEET (500 FEET DESIRABLE) CLEARANCE TO EXISTING SIGNS THAT WILL REMAIN IN PLACE.

ALL SIGNS ARE 48" X 48" UNLESS OTHERWISE NOTED.

"WO" IS THE SAME AS "W" EXCEPT THE BACKGROUND IS ORANGE.

SEE SEPARATE LANE CLOSURE DETAIL FOR TYPICAL SPACING OF TYPE III BARRICADES AND R11-2L "LANE CLOSED" SIGNS.

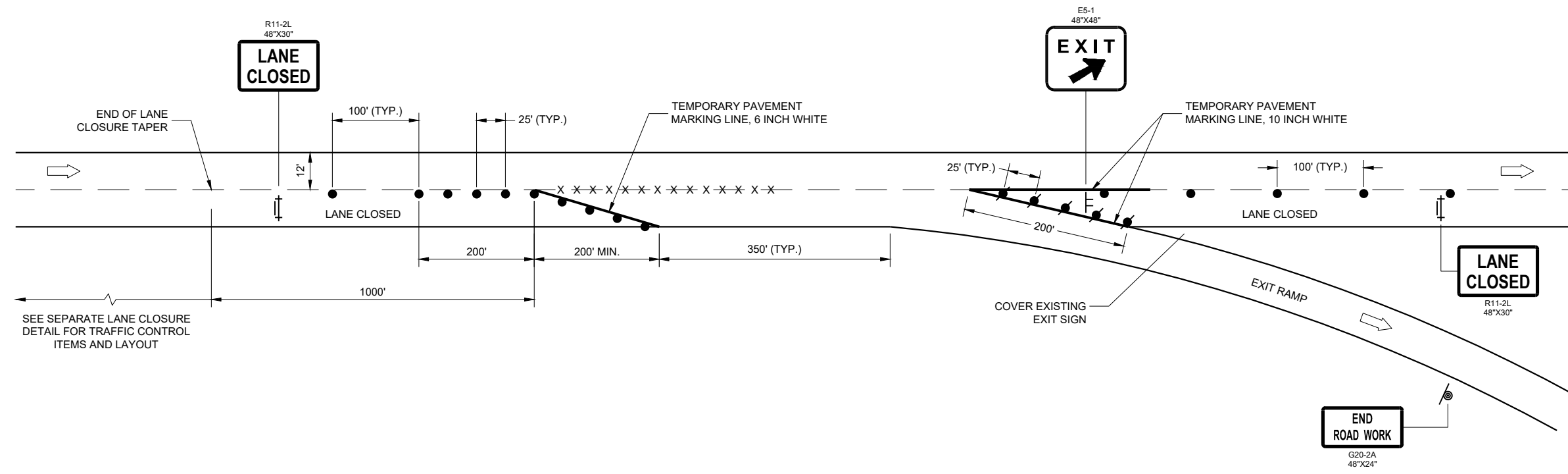
SIGNS THAT WILL BE IN PLACE LESS THAN 7 CONSECUTIVE DAYS AND NIGHTS OR THAT WILL BE PLACED IN A CLOSED LANE, MAY BE MOUNTED ON PORTABLE SUPPORTS.

IF INDICATED IN MISCELLANEOUS QUANTITIES, SUBSTITUTE FLEXIBLE TUBULAR MARKERS FOR DRUMS IN THE GORE BETWEEN THE EXIT RAMP AND MAINLINE TRAFFIC.

ANY SIGNS TEMPORARY OR EXISTING, WHICH CONFLICT WITH TRAFFIC CONTROL "IN USE" SHALL BE REMOVED OR COVERED AS NEEDED AND AS APPROVED BY THE ENGINEER.

REMOVE PAVEMENT MARKINGS AND PLACE TEMPORARY PAVEMENT MARKING LINES IF LANE CLOSURE IS TO BE IN PLACE FOR 4 OR MORE CONTINUOUS DAYS AND NIGHTS.

WARNING LIGHTS ARE NOT REQUIRED IF THE LANE CLOSURE IS A DAYTIME ONLY OPERATION.



6

6

SDD 15D15-07e

SDD 15D15-07e

TRAFFIC CONTROL, PARALLEL EXIT RAMP WITHIN LANE CLOSURE	
STATE OF WISCONSIN DEPARTMENT OF TRANSPORTATION	
APPROVED May 2023 DATE	/S/ Andrew Heidtke WORK ZONE ENGINEER
FHWA	

Traffic Control, Parallel Entrance Ramp within Right Lane Closure

References:

Part VI, Manual on Uniform Traffic Control Devices (MUTCD)

[FDM 11-50-1](#)[FDM 11-50-20](#)**Bid items associated with this drawing:**

<u>ITEM NUMBER</u>	<u>DESCRIPTION</u>	<u>UNIT</u>
643.0300	Traffic Control Drums	DAY
643.0420	Traffic Control Barricades Type III.....	DAY
643.0715	Traffic Control Warning Lights Type C.....	DAY
643.0900	Traffic Control Signs.....	DAY
643.0910	Traffic Control Covering Signs Type I.....	EACH
643.0920	Traffic Control Covering Signs Type II.....	EACH
643.3200-3299	Temporary Marking Line (Material) 6-Inch.....	LF
643.3400-3499	Temporary Marking Line (Material) 10-Inch.....	LF
646.1000-1099	Marking Line (Material) 4-Inch.....	LF
646.2000-2099	Marking Line (Material) 6-Inch.....	LF
646.3000-3099	Marking Line (Material) 8-Inch.....	LF
646.4000-4099	Marking Line (Material) 10-Inch.....	LF
646.9000	Marking Removal Line 4-Inch.....	LF
646.9060	Marking Removal Line 6-Inch.....	LF
646.9100	Marking Removal Line 8-Inch.....	LF
646.9160	Marking Removal Line 10-Inch.....	LF

Standardized Special Provisions associated with this drawing:

<u>STSP NUMBER</u>	<u>TITLE</u>
NONE	

Other SDDs associated with this drawing:

SDD 15D3	Traffic Control, Lane Closure, Speeds Greater than 40 M.P.H. with Barrier
SDD 15D12	Traffic Control, Lane Closure, Speeds Greater than 40 M.P.H.
SDD 15D14	Traffic Control, Two Lane Closure on Freeway or Expressway, Short-Term (Less than 24 Hours)

Design Notes:

Use a separate detail sheet to show the lane closure signing, taper and other traffic control. Standard Detail Drawings listed above may be appropriate.

In the gore between the entrance ramp and the mainline, Flexible Tubular Markers may be substituted for drums to improve visibility for traffic merging from the entrance ramp if the lane closure will be in place for 7 or more continuous days and nights. Consider the effects on visibility that are caused by drums, the ramp geometrics, and the relative elevations of the ramp approach and mainline. If Flexible Tubular Markers are to be used, indicate the appropriate entrance ramp gore locations in the Miscellaneous Quantities table. Bid items 643.0500 and 643.0600 and SDD 15C11 are then required.

Removing existing pavement markings and placing temporary markings are typically needed only if the lane closure will be in place for 4 or more continuous days and nights. For shorter periods, the designer may specify marking removal and temporary markings if desired.

Cover or remove existing and permanent signs that prevent conflicts with detours or other traffic operations.

Contact Person:

Andrew Heidtke (414) 220-6802

Traffic Control, Entrance Ramp within Left Lane Closure

References:

Part VI, Manual on Uniform Traffic Control Devices (MUTCD)

[FDM 11-50-1](#)[FDM 11-50-20](#)**Bid items associated with this drawing:**

<u>ITEM NUMBER</u>	<u>DESCRIPTION</u>	<u>UNIT</u>
465.0125	Asphaltic Surface Temporary	TON
643.0300	Traffic Control Drums	DAY
643.0420	Traffic Control Barricades Type III	DAY
643.0715	Traffic Control Warning Lights Type C	DAY
643.0900	Traffic Control Signs	DAY
643.0910	Traffic Control Covering Signs Type I	EACH
643.0920	Traffic Control Covering Signs Type II	EACH
643.3200-3299	Temporary Marking Line (Material) 6-Inch	LF
643.3400-3499	Temporary Marking Line (Material) 10-Inch	LF
646.1000-1099	Marking Line (Material) 4-Inch	LF
646.2000-2099	Marking Line (Material) 6-Inch	LF
646.3000-3099	Marking Line (Material) 8-Inch	LF
646.4000-4099	Marking Line (Material) 10-Inch	LF
646.9000	Marking Removal Line 4-Inch	LF
646.9060	Marking Removal Line 6-Inch	LF
646.9100	Marking Removal Line 8-Inch	LF
646.9160	Marking Removal Line 10-Inch	LF

Standardized Special Provisions associated with this drawing:

<u>STSP NUMBER</u>	<u>TITLE</u>
NONE	

Other SDDs associated with this drawing:

SDD 15D3	Traffic Control, Lane Closure, Speeds Greater than 40 M.P.H. with Barrier
SDD 15D12	Traffic Control, Lane Closure, Speeds Greater than 40 M.P.H.
SDD 15D14	Traffic Control, Two Lane Closure on Freeway or Expressway, Short-Term (Less than 24 Hours)

Design Notes:

Develop project specific plans for the temporary pavement when required.

Use a separate detail sheet to show the lane closure signing, taper and other traffic control. Standard Detail Drawings listed above may be appropriate.

In the gore between the entrance ramp and the mainline, Flexible Tubular Markers may be substituted for drums to improve visibility for traffic merging from the entrance ramp if the lane closure will be in place for 7 or more continuous days and nights. Consider the effects on visibility that are caused by drums, the ramp geometrics, and the relative elevations of the ramp approach and mainline. If Flexible Tubular Markers are to be used, indicate the appropriate entrance ramp gore locations in the Miscellaneous Quantities table. Bid items 643.0500 and 643.0600 and SDD 15C11 are then required.

Removing existing pavement markings and placing temporary markings are typically needed only if the lane closure will be in place for 4 or more continuous days and nights. For shorter periods, the designer may specify marking removal and temporary markings if desired.

Cover or remove existing and permanent signs that prevent conflicts with detours or other traffic operations.

Contact Person:

Andrew Heidtke (414) 220-6802

Traffic Control, Tapered Entrance Ramp within Right Lane Closure

References:

Part VI, Manual on Uniform Traffic Control Devices (MUTCD)

[FDM 11-50-1](#)[FDM 11-50-20](#)**Bid items associated with this drawing:**

<u>ITEM NUMBER</u>	<u>DESCRIPTION</u>	<u>UNIT</u>
643.0300	Traffic Control Drums	DAY
643.0420	Traffic Control Barricades Type III.....	DAY
643.0715	Traffic Control Warning Lights Type C.....	DAY
643.0900	Traffic Control Signs.....	DAY
643.0910	Traffic Control Covering Signs Type I.....	EACH
643.0920	Traffic Control Covering Signs Type II	EACH
643.3200-3299	Temporary Marking Line (Material) 6-Inch.....	LF
643.3400-3499	Temporary Marking Line (Material) 10-Inch.....	LF
646.1000-1099	Marking Line (Material) 4-Inch.....	LF
646.2000-2099	Marking Line (Material) 6-Inch.....	LF
646.3000-3099	Marking Line (Material) 8-Inch.....	LF
646.4000-4099	Marking Line (Material) 10-Inch.....	LF
646.9000	Marking Removal Line 4-Inch.....	LF
646.9060	Marking Removal Line 6-Inch.....	LF
646.9100	Marking Removal Line 8-Inch.....	LF
646.9160	Marking Removal Line 10-Inch.....	LF

Standardized Special Provisions associated with this drawing:

<u>STSP NUMBER</u>	<u>TITLE</u>
NONE	

Other SDDs associated with this drawing:

SDD 15D3	Traffic Control, Lane Closure, Speeds Greater than 40 M.P.H. with Barrier
SDD 15D12	Traffic Control, Lane Closure, Speeds Greater than 40 M.P.H.
SDD 15D14	Traffic Control, Two Lane Closure on Freeway or Expressway, Short-Term (Less than 24 Hours)

Design Notes:

Use a separate detail sheet to show the lane closure signing, taper and other traffic control. Standard Detail Drawings listed above may be appropriate.

In the gore between the entrance ramp and the mainline, Flexible Tubular Markers may be substituted for drums to improve visibility for traffic merging from the entrance ramp if the lane closure will be in place for 7 or more continuous days and nights. Consider the effects on visibility that are caused by drums, the ramp geometrics, and the relative elevations of the ramp approach and mainline. If Flexible Tubular Markers are to be used, indicate the appropriate entrance ramp gore locations in the Miscellaneous Quantities table. Bid items 643.0500 and 643.0600 and SDD 15C11 are then required.

Removing existing pavement markings and placing temporary markings are typically needed only if the lane closure will be in place for 4 or more continuous days and nights. For shorter periods, the designer may specify marking removal and temporary markings if desired.

Cover or remove existing and permanent signs that prevent conflicts with detours or other traffic operations.

Contact Person:

Andrew Heidtke (414) 220-6802

*Traffic Control, Tapered Entrance Ramp within Left Lane Closure***References:**

Part VI, Manual on Uniform Traffic Control Devices (MUTCD)

[FDM 11-50-1](#)[FDM 11-50-20](#)**Bid items associated with this drawing:**

<u>ITEM NUMBER</u>	<u>DESCRIPTION</u>	<u>UNIT</u>
643.0300	Traffic Control Drums	DAY
643.0420	Traffic Control Barricades Type III.....	DAY
643.0715	Traffic Control Warning Lights Type C.....	DAY
643.0900	Traffic Control Signs.....	DAY
643.0910	Traffic Control Covering Signs Type I.....	EACH
643.0920	Traffic Control Covering Signs Type II	EACH

Standardized Special Provisions associated with this drawing:

<u>STSP NUMBER</u>	<u>TITLE</u>
NONE	

Other SDDs associated with this drawing:

SDD 15D3	Traffic Control, Lane Closure, Speeds Greater than 40 M.P.H. with Barrier
SDD 15D12	Traffic Control, Lane Closure, Speeds Greater than 40 M.P.H.
SDD 15D14	Traffic Control, Two Lane Closure on Freeway or Expressway, Short-Term (Less than 24 Hours)

Design Notes:

Use a separate detail sheet to show the lane closure signing, taper and other traffic control. Standard Detail Drawings listed above may be appropriate.

In the gore between the entrance ramp and the mainline, Flexible Tubular Markers may be substituted for drums to improve visibility for traffic merging from the entrance ramp if the lane closure will be in place for 7 or more continuous days and nights. Consider the effects on visibility that are caused by drums, the ramp geometrics, and the relative elevations of the ramp approach and mainline. If Flexible Tubular Markers are to be used, indicate the appropriate entrance ramp gore locations in the Miscellaneous Quantities table. Bid items 643.0500 and 643.0600 and SDD 15C11 are then required.

Removing existing pavement markings and placing temporary markings are typically needed only if the lane closure will be in place for 4 or more continuous days and nights. For shorter periods, the designer may specify marking removal and temporary markings if desired.

Cover or remove existing and permanent signs that prevent conflicts with detours or other traffic operations.

Contact Person:

Andrew Heidtke (414) 220-6802

Traffic Control, Parallel Exit Ramp within Lane Closure

References:

Part VI, Manual on Uniform Traffic Control Devices (MUTCD)

[FDM 11-50-1](#)[FDM 11-50-20](#)**Bid items associated with this drawing:**

<u>ITEM NUMBER</u>	<u>DESCRIPTION</u>	<u>UNIT</u>
643.0300	Traffic Control Drums	DAY
643.0420	Traffic Control Barricades Type III.....	DAY
643.0715	Traffic Control Warning Lights Type C.....	DAY
643.0900	Traffic Control Signs.....	DAY
643.0910	Traffic Control Covering Signs Type I.....	EACH
643.0920	Traffic Control Covering Signs Type II	EACH
643.3200-3299	Temporary Marking Line (Material) 6-Inch.....	LF
643.3400-3499	Temporary Marking Line (Material) 10-Inch.....	LF
646.1000-1099	Marking Line (Material) 4-Inch.....	LF
646.2000-2099	Marking Line (Material) 6-Inch.....	LF
646.3000-3099	Marking Line (Material) 8-Inch.....	LF
646.4000-4099	Marking Line (Material) 10-Inch.....	LF
646.9000	Marking Removal Line 4-Inch.....	LF
646.9060	Marking Removal Line 6-Inch.....	LF
646.9100	Marking Removal Line 8-Inch.....	LF
646.9160	Marking Removal Line 10-Inch.....	LF

Standardized Special Provisions associated with this drawing:

<u>STSP NUMBER</u>	<u>TITLE</u>
NONE	

Other SDDs associated with this drawing:

SDD 15D3	Traffic Control, Lane Closure, Speeds Greater than 40 M.P.H. with Barrier
SDD 15D12	Traffic Control, Lane Closure, Speeds Greater than 40 M.P.H.
SDD 15D14	Traffic Control, Two Lane Closure on Freeway or Expressway, Short-Term (Less than 24 Hours)

Design Notes:

Use a separate detail sheet to show the lane closure signing, taper and other traffic control. Standard Detail Drawings listed above may be appropriate.

Removing existing pavement markings and placing temporary markings are typically needed only if the lane closure will be in place for 4 or more continuous days and nights. For shorter periods, the designer may specify marking removal and temporary markings if desired.

If permanent interchange guide signs will not be in place on the mainline during the project, provide for temporary interchange guide signs. Consult with Region Traffic Unit. The E5-1 Exit sign may be supplemented by a plaque indicating the exit number. The exit number plaque may be desirable at complex interchanges where there are multiple exits within a short distance. Special temporary interchange guide signs and exit number plaques are paid as Temporary Traffic Control Signs Fixed Message (Bid Item Number 643.1000) and should be shown on a traffic control overview sheet. Plan sheets detailing the special sign layouts are also required.

Cover or remove existing and permanent signs that prevent conflicts with detours or other traffic operations.

Contact Person:

Andrew Heidtke (414) 220-6802