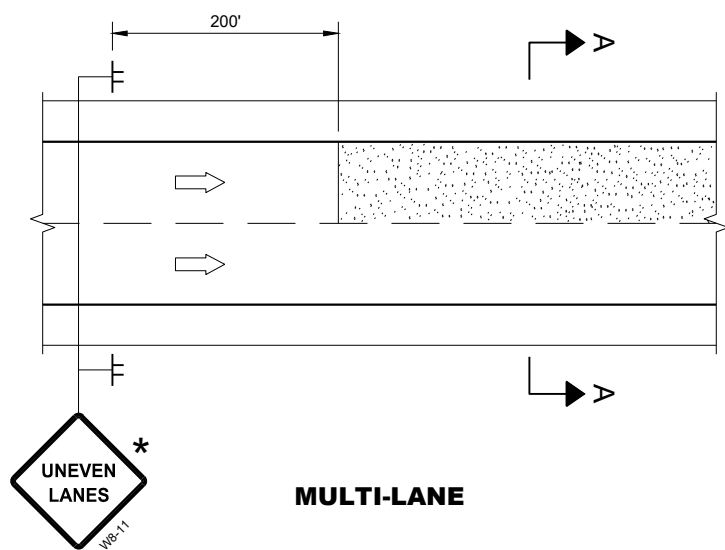
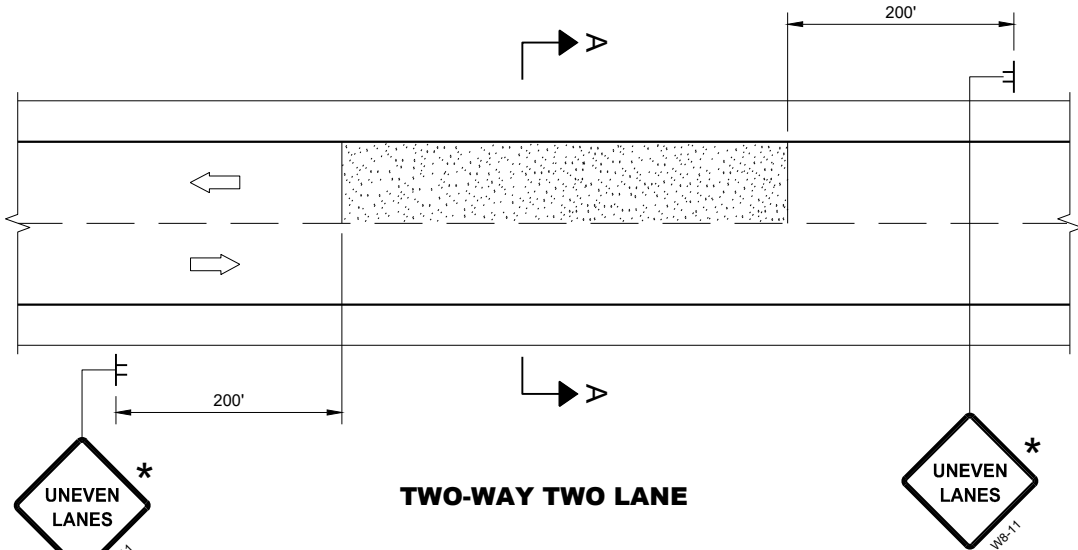




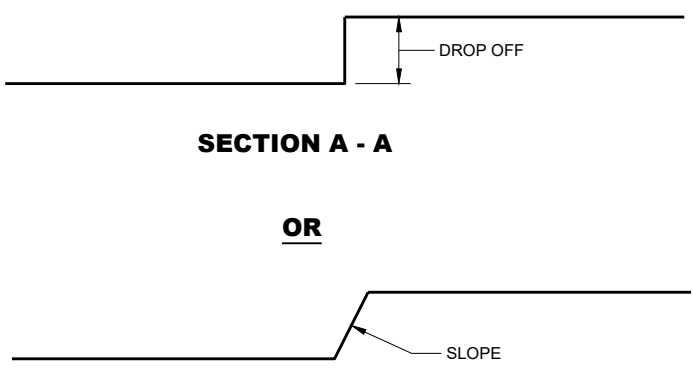
SDD 15D39 Traffic Control, Drop-off Signing



MULTI-LANE



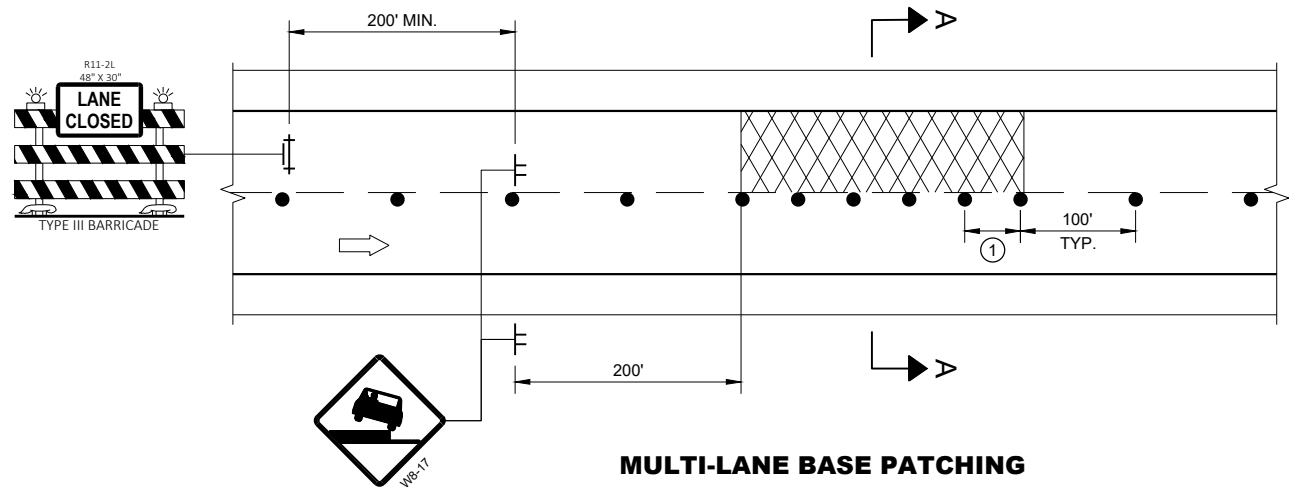
TWO-WAY TWO LANE



SECTION A - A

OR

SECTION A - A



MULTI-LANE BASE PATCHING

ADJACENT LANE DROP-OFFS

GENERAL NOTES

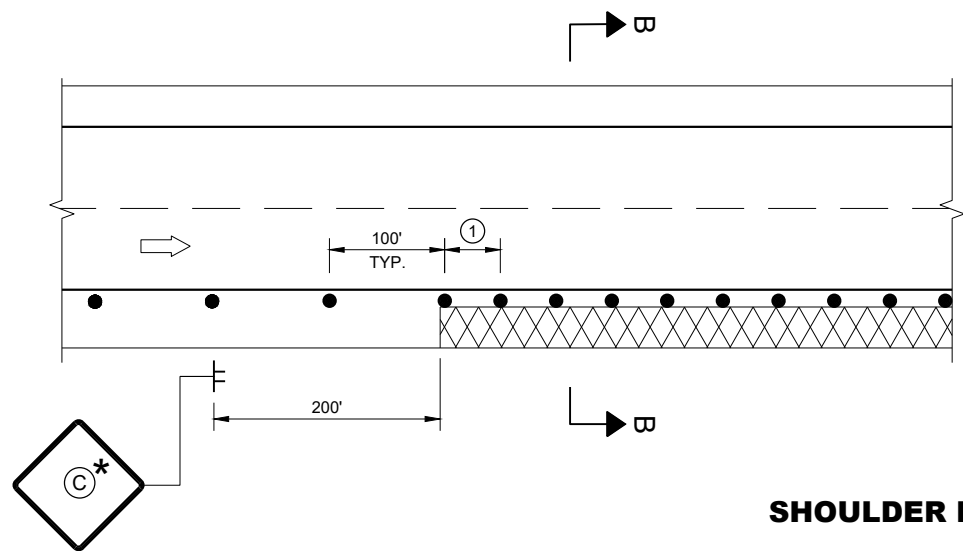
- FOR SPOT LOCATIONS USE ENGINEERING JUDGEMENT WHEN PLACING ADDITIONAL SIGNS.
- ALL SIGNS ARE 48" X 48" UNLESS OTHERWISE NOTED.
- "WO" SIGNS ARE THE SAME AS "W" SIGNS EXCEPT THE BACKGROUND IS ORANGE.
- WARNING LIGHTS ARE NOT REQUIRED IF THE LANE CLOSURE IS A DAYTIME ONLY OPERATION.
- * IF THE DROP-OFF IS CONTINUOUS ALONG THE PROJECT, PLACE ADDITIONAL SIGNS EVERY 1 MILE AND AFTER EVERY ENTRANCE RAMP.
- ① USE CLOSER SPACING WHEN DELINEATING DROP-OFF.

LEGEND

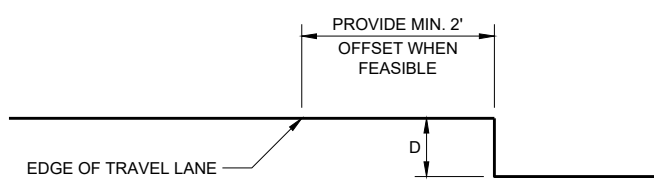
- SIGN ON TEMPORARY SUPPORT
- TRAFFIC CONTROL DRUM
- TYPE III BARRICADE WITH ATTACHED SIGN
- TYPE "A" WARNING LIGHT (FLASHING)
- DIRECTION OF TRAFFIC
- WORK AREA WITH DROP-OFF
- MILLED SURFACE

6

6



SHOULDER DROP-OFFS



SECTION B - B

D	SIGN (C)
< 2" WITH A SLOPE STEEPER THAN 3:1	LOW SHOULDER WO8-9
2" < 6" WITH A SLOPE STEEPER THAN 3:1	SHOULDER DROP-OFF W8-9A PROVIDE A 3:1 OR FLATTER SLOPE OF MATERIAL ADJACENT TO THE PAVEMENT

**TRAFFIC CONTROL,
DROP-OFF SIGNING**

STATE OF WISCONSIN
DEPARTMENT OF TRANSPORTATION

APPROVED
March 2018 /S/ Andrew Heidtke
DATE DATE WORK ZONE ENGINEER

FHWA

SDD 15D39 - 02

SDD 15D39 - 02

Traffic Control for Drop-off Signing

References:

[FDM 11-50-20](#)

Manual on Uniform Traffic Control Devices (MUTCD)

Bid items associated with this drawing:

<u>ITEM NUMBER</u>	<u>DESCRIPTION</u>	<u>UNIT</u>
643.0900	Traffic Control Signs	DAY

Standardized Special Provisions associated with this drawing:

<u>STSP NUMBER</u>	<u>TITLE</u>
NONE	

Other SDDs associated with this drawing:

- [SDD 15C12](#) Traffic Control for Lane Closure (Suitable for Moving Operations)
- [SDD 15D4](#) Traffic Control, Ramp Construction Staging
- [SDD 15D12](#) Traffic Control, Lane Closure
- [SDD 15D14](#) Traffic Control, Two Lane Closure on Freeway or Expressway Short-Term
- [SDD 15D20](#) Traffic Control, Single Lane Closure, Non-Freeway/Expressway
- [SDD 15D22](#) Traffic Control, Two Lane Closure, Non-Freeway/Expressway
- [SDD 15D27](#) Traffic Control, Shoulder Closure on Divided Roadway, Speeds Greater than 40 M.P.H.
- [SDD 15D28](#) Traffic Control, Work on Shoulder or Parking Lane, Undivided Roadway

Design Notes:

Use this drawing when a drop-off condition is anticipated.

Contact Person:

Andrew Heidtke (414) 220-6802