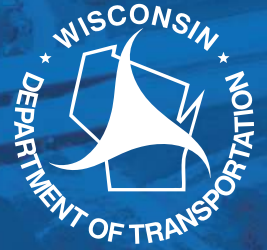


DBE Bid Letting Bulletin

July 9, 2024



HELPING DISADVANTAGED BUSINESS ENTERPRISES DO WORK WITH WISDOT

OBOEC welcomes new DBE Program Chief Tie Fleming

My name is Tie (Tiesha) Fleming, and I am thrilled to now be part of OBOEC as the new DBE Program Chief! I started in April 2024, and was immediately immersed in a variety of initiatives that will impact the DBE Program in the years to come. In the short time I have been here, I am impressed with the prior progress of the DBE Program and look forward to collaborating with the prime contractor community to make it even better. As many of you already know, I have an incredible team who are dedicated to helping DBEs attain success. Every subcontract awarded to a DBE encompasses our core beliefs of partnership, opportunity, and inclusion.

A little bit of personal information about me. I am a Wisconsin native – born and raised in Mequon, Wisconsin. I truly love everything about our great State, even the cold winters days that tend to stick around during spring months. I received my education in Communication from the University of Wisconsin- Milwaukee and I have a three-year-old toddler that likes to keep me on my toes! My free time is spent traveling and staying connected to family and old friends.

Tie Fleming, DBE Program Chief
(262) 548-6897

Tie.Fleming@dot.wi.gov



THANK YOU

WisDOT Prime Contractor Community

THANK YOU for meeting the assigned DBE goal at bid time **THANK YOU** for utilizing DBEs throughout the life of the project **THANK YOU** for “in the field” training that makes DBEs more experienced **THANK YOU** for highlighting DBE participation on projects on your website **THANK YOU** for your long hours and hard work in challenging weather **THANK YOU** for your commitment to health and safety **THANK YOU** for your continued partnership and collaboration **THANK YOU** for taking the time to be a Mentor-Protégé participant and for being a supportive resource for DBEs **THANK YOU** for adapting to new DBE Program federal regulations **THANK YOU** for answering DBE questions

DBE Spotlight Firm



Tough Cut Concrete Service, INC.

NAICS codes:

237310: Highway, Street, & Bridge Construction

238110: Poured Concrete Foundation And Structure Contractor

DBE Certified work:

Heavy Highway Construction (Concrete Cutting/Drilling/Sealant/Sawing)

Demolition And Crushing Of Construction Material

Aggregates On-Site

Supplier Of Recycled Construction Material Aggregates

For the people who crush concrete on a daily basis, being productive is not just a matter of an individual's size and strength. More than anything, it's about getting the job done properly by utilizing proper equipment designed specifically for the job. Please feel free to contact us for a FREE quote on services or for more information on Tough Cut. We look forward to the opportunity of serving you.

Tough Cut Concrete Service, Inc

Christine McCellan

(815) 464-8462

toughcuts@sbcglobal.net

Tough Cut Concrete Services has been in business for almost 20 years offering On-Site crushing, recycling, diamond grinding and grooving working on heavy highway projects.

Tough Cut is a leader in the process of Concrete Crushing and Recycling, Diamond Grinding, Bridge Deck Grooving, Excavation and Demolition. We have enough crews and equipment to service the largest jobs and the flexibility to meet the smaller needs as well. As of January 26, 2005, Tough Cut Concrete Services, Inc. was incorporated; and as of March 8, 2005, Christine McClellan, Owner/President, was certified as a Disadvantaged Business Enterprise (DBE). Christine is also:

- DBE & WBE Certified / Illinois
- WBE Certified: Metropolitan Water Reclamation District of Greater Chicago (MWRD)
- WBE Certified: City of Chicago
- DBE Certified: INDOT
- NEW WBE: State of Indiana
- DBE Certified: FDOT
- DBE Certified: MDOT
- DBE & WBE Certified: State of Wisconsin



NAICS codes

Prime contractors are responsible for checking DBE NAICS codes on the [UCP DBE Directory](#) for any work being claimed by a DBE for DBE credit on that project.

Selected work items

This is a reminder that #2 on the [DT1202](#) (Documentation of GFE) requires that prime contractors review each proposal and “...ensure that all work items are broken out into economically feasible units to facilitate DBE participation.” If there is a larger component to the project such as a bridge structure, proactively work with the 1st tier hiring subcontractor to identify DBEs who can provide quotes for work items included within a larger work type (ex: bridge painters and/or iron work/bar steel installers).

Self-performing work

Please remember to evaluate any DBE quote for a work type that your company is considering self-performing with more scrutiny.

Prime contractors can almost always perform the work for less cost. If your company submits a GFE request we look at both the percentage difference and dollar difference as it relates to the total bid amount.

Newly Certified DBE Contractors

NEW

National Sealant & Concrete, Inc

NAICS code: 238110

Poured Concrete Foundation and Structure Contractors

CERTIFICATION EXPANSION

St. Germaine Enterprises, LLC

NAICS code: 339950

Road Sign Manufacturing

Specialty DBE Contractors

Iron Workers/Rebar/Steel Reinforcement Installers

NAICS code: 238120

- Beson & Houle
- Five Star Rebar
- Kadilex
- MA Rebar Services, Inc
- MKE Iron Erectors, Inc.
- Wisconsin Rebar, Inc

Rebar/Steel Reinforcement/Steel Manufacturers & Suppliers

NAICS codes: 331110/332312/423510

- American Construction Supplies, Inc.
- Carolina Construction Supplies, LLC
- Davidson Trucking dba Davidson Construction Supply
- Great Lakes Metal Corp
- Mid-States Rebar & Supply, Inc
- Tye Bar, LLC

Clearing & Grubbing-Site Prep

NAICS codes: 238910/561370

- Conin Contractor Services, Inc.
- Gibraltar Landscape
- Hoffman Landscape, LLC
- Johnson Operating Services, LLC
- Putnam Construction, LLC
- Vanzile Contractors, LLC

Drainage/Storm Sewer

NAICS code: 237110

- Abitua Sewer, Water & Plumbing
- All-State Concrete Cutting
- Arrow-Crete Construction, LLC
- Brothers Infrastructure Group (BIG), LLC
- DK Contractors, Inc
- Dolson, Inc
- Enserv Enterprises, Inc
- JLA & Sons Construction Company
- Kim Construction
- Mavo Concrete Sawing Services, Inc
- Meyer Companies dba Pete’s Water & Sewer
- Nadeau Companies, LLC
- Precise Underground Marking Corp
- Rsims Construction, LLC
- UPI, LLC

Field office

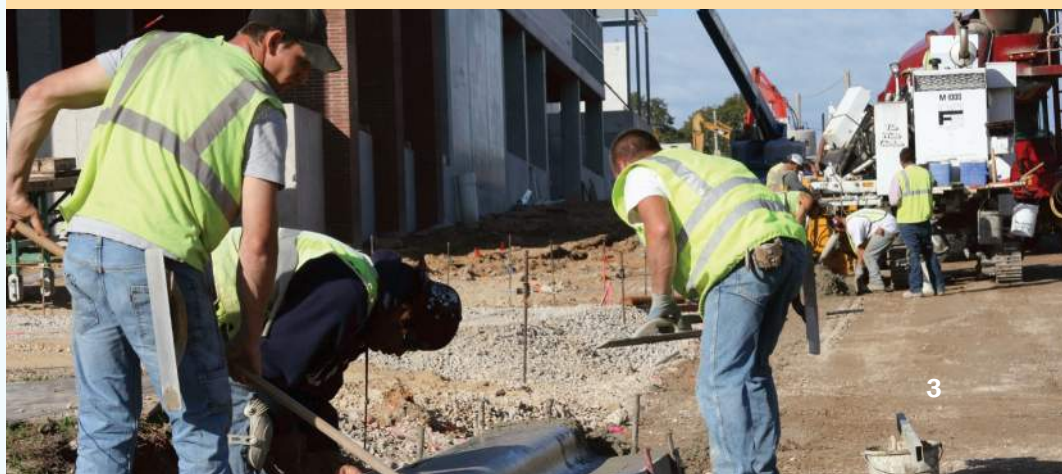
NAICS code: 531120

- NMR Contractors, LLC

Milling/Rumble Strips

NAICS code: 237310

- CE Hughes Milling, Inc.



Specialty DBE Contractors continued



Pile Driving NAICS code: 237310

- Wren Works, LLC

Fencing NAICS code: 238990

- Anderson Fence
- Arbor Green
- The Bartech Group
- Perez Fencing
- Jackson's Yard Care

Traffic Control NAICS code: 561990

- ANASA Traffic Control Services, LLC
- Bush Companies (Flagging)
- Community Traffic Control, LLC
- Emarin Group, LTD
- FCS, LLC
- Highway Solutions (pavement markings; grooving; temp tape)
- Kennedy Construction Management, LLC
- National Traffic Solutions, LLC
- PPK Traffic Solutions, LLC
- S.A.L. Traffic Control
- Steel City Contractors, LLC (Flagging)

DBE Opportunities Per Region and Proposal

Each month, Benjie Hayek, our DBE Program Engineer, identifies DBE sub-contractable opportunities, as well as DBEs who have NAICS codes specific to specialty work items. Please encourage your estimating teams to:

- **REVIEW** the attached region and proposal breakdown on pgs. 11-12; and
- **UTILIZE** it as an additional resource, so your company is considering and including ALL potential DBE sub-contractable opportunities in your DBE solicitation and outreach efforts.

Note: The DBE Office sends the region and proposal breakdown after the bid letting advertisement is posted and also includes it in the Bid Letting Update Newsletter.

If you have any questions, reach out to Benjie to discuss:

Benjie Hayek, DBE Program Engineer
benjie.hayek@dot.wi.gov / (608) 712-8915

TIPS FOR FINDING DBE OPPORTUNITIES

- Review the proposal(s) your company is bidding on and the selected work types identified in your solicitation.
- Compare that against the WisDOT DBE Opportunities breakdown per region and proposal.
- Are there DBE opportunities your company is missing and/or did not consider?
 - If so, have you updated the selected work items in your DBE solicitation?

Have you reviewed the region and proposal breakdown before sending out your DBE solicitation?

Incomplete and/or Inaccurate Attachment As:

Recently, we have seen an increase in Attachment As that are either incomplete and/or inaccurate. The DBE Office will follow-up after bids are posted to provide a friendly reminder, but we also ask that prime contractors have a **process in place** to catch and correct AA issues before submitting them.

The most common Attachment A issues:

In the First Section:

- The Proposal ID, Proposal Number and/or Date is incorrect

In the Second Section:

- The prime contractor and hiring subcontractor names are reversed or only the hiring subcontractor name is listed.
 - The prime contractor name is **FIRST**. The hiring subcontractor name is **SECOND**
- The **Total DBE Credit Value** differs from the amount electronically entered into BidX. Sometimes this is off by pennies, so please **double check** all amounts for accuracy.

General Bid Letting Reminders

BPD Team and DBE Team Bid Letting Contacts

On bid letting day, it is important that you reach the right person who is the **Subject Matter Expert** for your question. If your company has a question, please reach out to the following people who are available up to 11:00 AM the day of the LET:

BidX/Project Bids Questions:

Deanna Goebel (BPD)
IS Business Automation/Bid Letting Specialist
Deanna.goebel@dot.wi.gov
(608) 267-6967

DBE Bin File Questions:

Ijeoma O'Rorke (DBE Team)
Bid Letting Coordinator
ljeoma.ororke@dot.wi.gov
(414) 266-1173



eSubmit has been upgraded. Bidders will now get an email notification that lists **ALL** uploaded documents. Please test the platform prior to bid letting day and reach out to DBE_Alert@dot.wi.gov if you encounter any issues.



Bid Letting Binder: There is a lot of information online to assist prime contractors with the bid letting and GFE process. In addition to reviewing this information online, consider keeping an updated bid letting binder. Instead of searching for emails if you have a question, maintain a binder with the following sections:

- [WisDOT Bid Letting Resource Guide](#)
- [Monthly Bid Letting Newsletters](#)
- [Beyond the Basics: Optimizing DBE Construction Utilization for Primes](#)
- [GFE Tool Kit](#)
- [GFE Tool Kit Appendix](#)
- [Outdated DBE Contact Reminder](#)
- [eSubmit Instructions](#)
- Internal processes, procedures, policies & GFE data tracking

This binder can also be used as a training manual for new employees.

GFE 1:1 Sessions

It is recommended that your company has a GFE 1:1 at least once a year with WisDOT.

The GFE Analyst is available to answer any questions regarding Good Faith Effort and discuss areas of opportunity to strengthen your company's GFE request.

CONTACT:

Kathleen Panak | GFE Analyst

kathleen.panak@dot.wi.gov

(262) 548-6459

GFE Reminders

The best way to demonstrate Good Faith Effort (GFE) is by meeting the assigned DBE goal. However, we always recommend that prime contractors continue to work with DBEs during the bid letting – the DBE Office considers NEUTRAL DBE participation on the GFE Rubric also a demonstration of Good Faith Effort.



NEW! In June 2024, there were (8) proposals with an assigned DBE goal and (0) GFE requests. Great job meeting the assigned DBE goals at bid time!

What is your GFE story?

Ideally, a well documented GFE request should tell WisDOT a story about “why” your company was unable to meet the goal by answering these questions in the DT1202 Excel workbook:

- What is your company's DBE/GFE strategy? (Describe in the optional GFE strategy overview tab)
- What challenges (if any) did you encounter in meeting the assigned DBE goal? (Describe in prime contractor comments included on the solicitation tab)
- What other factors impacted your awarding decisions to DBEs? (Describe in the intent to award tab)

Solicitation, negotiation, assistance and DBE outreach help round out **all other** efforts made to reach the assigned DBE goal.

Keep in mind, each bidding experience for a proposal is unique, **so err on the side of providing more information and detail throughout your company's GFE request** on the various [DT1202 Excel Workbook](#) tabs.

In addition to providing sound reasoning on intent to award tab, consider also including answers to the questions on the left within your company's GFE request.

Remember: Only documented efforts can be evaluated.

Tips for GFE documentation in the DT1202 Excel workbook

- Create simple and consistent processes that are routinely followed at bid letting and between bid lettings
- Maintain a DT1202 Excel workbook master template. On this version:
 - Enter as much information that does not change frequently such as solicitation, assistance and DBE outreach details
 - Maintain a habit of periodically updating certain tabs (such as DBE outreach) so if you have a GFE request this information is ready to go.
- If your company expects to submit a GFE request for a particular proposal -- copy and save the DT1202 Excel workbook master template on a shared site where multiple, authorized users can enter, review and edit information simultaneously
- Think about your GFE request and strategy as interconnected activities that tell WisDOT a story about why your company did not meet the assigned goal versus a “check the box” administrative exercise.

If your company is an infrequent bidder or your company simply has not had a recent GFE request, it is important that your staff understands how to document and assemble a GFE request.

Remember to use the most current version of the [DT1202 Form \(Documentation of Good Faith Effort\)](#) that is effective as of February 2024 and provide all applicable backup documentation outlined in the Table of Contents tab within the DT1202 Excel Workbook by Wednesday at 11:00 am.

Build your company website as a DBE resource

✓ Your company website can be a one-stop shop for all DBE related information. Direct DBEs to your website in your solicitation letter and/or email and consider incorporating the following elements into the DBE section of your website:

- Current bid letting information and **upcoming DBE Opportunities**
- **Recent Projects** that included DBEs. With DBE permission, add pictures
- **DBE Testimonials** and/or **DBE Statistics** that highlight your company's commitment to DBE partnership
- **Encourage DBE Utilization** (DBE trucking, materials and/or supplies) from hiring subcontractors and provide the link to the [UCP DBE Directory](#)
- **Provide Links** back to back to recorded workshops located on the [DBE Support Services webpage](#) under Trainings and Workshops.

DBE Solicitation and Outreach Reminders

✓ Why should prime contractors update DBE and/or Hiring Subcontractor Solicitations?

The previous example of the DBE solicitation was in use for many years and very text heavy. Many prime contractors used this same version; meaning there was little differentiation between prime contractors and DBEs received identical solicitations. There was not an emphasis on a separate solicitation to hiring subcontractors to utilize DBEs, DBE suppliers and/or DBE trucking or to highlight DBE successes. For any prime contractor who has had a GFE 1:1 session, your company knows that solicitation revisions have been a focus for FFY2022 and FFY2023.

Updated solicitations are a fundamental part of an overall DBE/GFE strategy that re-brands *your company's* DBE message.

✓ What makes a solicitation to DBEs and/or Hiring Subcontractors effective?

- Plain language stated concisely to communicate various pieces of information
- Inclusive language that your company will accommodate **smaller work packages** (when feasible) and that your company welcomes DBE questions about proposals
- Use of bullet points
- Interesting use of graphics and/or pictures that define your company brand
- DBE success data that includes specific projects – such as:
Project 1234-00-01 / April 2022 Letting
DBE Project Goal: 4.00%
DBE Goal Achieved: 17.88%
- Similar messaging that is highlighted on your company website (see tips in column to the left)

Upcoming Stakeholder Meetings and Events

We invite all prime contractors to participate in the meetings and events below.

Your feedback is an important part of how we shape and improve the DBE Program. These meetings are meant to communicate important upcoming changes as well as provide a forum to prime contractors to ask questions and voice concerns.

Trans-AC Meeting

This is an industry stakeholder group meeting where current updates and issues are discussed with construction industry and DBE Program staff. All are welcome to attend – we encourage feedback and questions.

NEXT MEETING:
July 16, 2024
1:00 pm – 3:00 pm CST

TEAMS meeting invite to the Trans-AC Meeting can be found [here](#).

Call in information: (608) 571-2209
Phone Conference ID: 588 531 454#

DBE Stakeholder Advisory Committee

DBE Stakeholder Advisory Committees operating in the **Northeast Region** and **Southeast Region** work with WisDOT on the following:

- Approaches to achieve greater DBE participation and strategies to monitor progress
- Upcoming transportation projects and learning about opportunities to partner with other firms
- As a liaison to communities
- Creating and implementing strategies for cultivating a diverse workforce

Southeast Region

The DBE Stakeholder Advisory meeting in the Southeast Region meets on a quarterly basis. For more information contact: [Christina Crain](#)

NEXT MEETING:
July 25, 2024
10:00 am – 12:00 pm CST

TEAMS Link to the Southeast Region DBE Stakeholder Advisory Committee meeting can be found [here](#).

Call in information: (608) 571-2209
Phone Conference ID: 823 230 709#

Northeast Region

The DBE Stakeholder Advisory meeting in the Northeast Region meets on a quarterly basis. For more information contact: [Christina Crain](#)

NEXT MEETING:
August 16, 2024
10:00 am – 12:00 pm CST

TEAMS Link for the Northeast Region DBE Stakeholder Advisory Committee meeting can be found [here](#).

Call in information: (608) 571-2209
Phone Conference ID: 836 911 741#

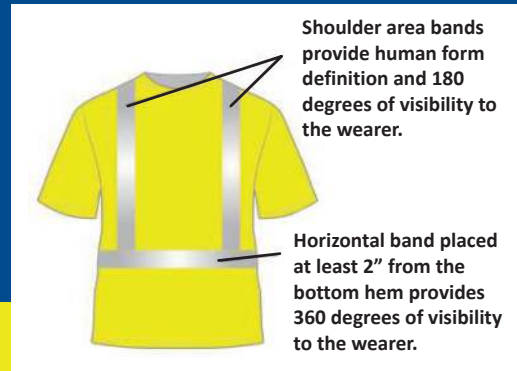


High Visibility Apparel

Part 6D.03 Worker Safety Considerations of the Wisconsin MUTCD (Manual on Uniform Traffic Control Devices) requires: “All workers,....,within the right-of-way who are exposed either to traffic (vehicles using the highway for purposes of travel) or to work vehicles and construction equipment within the TTC zone shall wear high-visibility safety apparel that meets the Performance Class 2 or 3 requirements of the ANSI/ISEA 107-2004 publication entitled “American National Standard for High-Visibility Safety Apparel and Headwear”

Enforcement

WisDOT wants to remind everyone that individuals will be removed from the project for not wearing appropriate high visibility apparel. Standard Spec 107.9 states that the project engineer has sole authority of the contractor’s use of the right-of-way.



Highway Construction Skills Training

Recently, participants of WisDOT’s HCST program, went through training for flagging and surveying. Please take a few moments to watch [this video](#) of people learning new job skills, critical to the transportation industry and hopefully working on road improvement projects soon – throughout the State of Wisconsin transportation systems.



WisDOT Work Zone Safety Updates

Work zone safety is an incredibly important topic to WisDOT, and something we take very seriously anytime we're in the field or behind the wheel. Below is an overview of the many tools in the field that DTSD staff uses to increase safety. Also, as a reminder: the best way to improve work zone safety is by avoiding work zones. Get in the habit of using the [511 WI](#) app or website to get up-to-the-minute road and weather conditions so you can "know before you go."

■ **TEMPORARY RUMBLE STRIPS** help alert drivers to upcoming work on high-speed roads. They are made of orange polymer with pre-applied adhesive and are easily moved as needed.

■ **THE SPEED WIZARD** is a traffic calming device that displays either the original posted speed or the reduced (work zone) speed limit. It also connects directly to third-party navigation devices such as Waze and collects speed data in real time.

■ **THE CONNECTED WORK ZONE NOTIFICATION SYSTEM** incorporates devices such as arrow boards and work zone location markers, which can be placed at beginning and end of work zone. They connect to navigation devices to provide motorists with updated work zone information.

■ **THE DIGITAL SPEED REDUCTION SYSTEM** can change the posted speed remotely and has beacons on the top and bottom that flash when the speed limit has been lowered for workers present. We are piloting these devices on several projects this year.

■ **SMART WORK ZONE SYSTEMS** have been installed on more than 45 projects since 2017 to help reduce rear-end crashes approaching work zones with queuing and delay on high-speed roadways.

■ **AN AUTOMATED TRUCK MOUNTED ATTENUATOR** is a driverless vehicle that absorbs energy and protects work crews from vehicles entering active highway work zones. We are piloting these for use in slow-moving operations (up to 15 mph) such as line painting or sweeping.

■ **GUARDIAN ANGEL LIGHTS** are lightweight with very powerful magnets, which allows them to be mounted on vests, hard hats or traffic cones. They have multiple brightness settings, the highest of which can be seen from miles away.

■ **DRIVEWAY ASSISTANCE DEVICES** manage traffic from driveways within a one-lane work zone. Flashing arrows direct drivers to make safe turns out of their driveway and into the work zone.



DBE Program Bid Letting Bulletin / JULY 2024

LET DATE: 07/09/2024

NE REGION

PROPOSAL NUMBER	002	003
DBE GOAL	9.00%	8.00%
COUNTY	Door	Outagamie
Road Work • Asphalt Paving/Tack • Aggregate • Concrete Paving *Stamped/Colored Concrete • Base Patching • Flumes • Removals	X	X
Bridge Work • Approaches/Deck Repair-Overlay/Pile Driving • Surface Repair *Slope Paving	X	X
Iron Work • BarSteel/Reinforcing Steel- Rebar • DrilledTie- Dowel Bars	X	X
Structures *BarSteel • Diaphragms • Girders *Railing *Cofferdams/Temp Shoring *Debris containment system/Removals	X/*X	*X
SurfaceTreatment/Sealer	X	
Excavation/Grading *Marsh Excavation *Excavation for Structures/Culverts	X/*X	X/*X
Milling/Pulverize and Relay/Rumble Strips		X
Curb & Gutter/Sidewalk/Detectable Warning Yellow/Temporary Pedestrian/Removals • Appurtenant concrete work - Driveways *Colored Concrete/Stamping	X	X
Drainage: Culvert/Storm Sewer - Inlets - Manholes/Pipe/Grates/Removals *Surface drains • Pipe Underdrain	X	X
Beam Guard/Cable Barrier/Removals	X	X
Erosion Control/Dust Control/Riprap *Turbidity barrier *Tracking Pads	X	X/*X
Clearing and Grubbing	X	X
Landscaping	X	X
Pavement Cutting/Drilling/Sawing	X	X
Pavement Marking/Temporary Marking/Locating No Passing Zones/Removals	X	X
Signs/Posts Markers/Removals	X	X
QMP/Material Testing	X	X
Construction Staking	X	X
Traffic Control • Temporary Tape *Temporary Concrete Barrier *Temp Pedestrian	X	X/*X
Material Supplier	X	X
Trucking: Excavation, Aggregates, Slurry, Asphalt, Millings, Removals *Contaminated soil hauling	X	X

X/*X/X Indicates specialty item on this project in addition to typical bid items**

LET DATE: 07/09/2024

NW REGION

PROPOSAL NUMBER	004	005
DBE GOAL	6.00%	2.00%
COUNTY	St. Croix	Douglas
Road Work • Asphalt Paving/Tack • Aggregate • Concrete Paving *Stamped/Colored Concrete *Base Patching • Flumes • Removals	X	X
Bridge Work • Approaches/Deck Repair-Overlay/ *Pile Driving *Concrete Masonry/Retaining Walls *Slope Paving	X	X/*X
Iron Work • BarSteel/Reinforcing Steel- Rebar • DrilledTie- Dowel Bars	X	
Structures *BarSteel • Diaphragms • Girders *Railing *Cofferdams/Temp Shoring *Debris containment system/Removals	X/*X	
SurfaceTreatment/Sealer	X	
Bridge Painting/Staining *Pigmented Surface Sealer	*X	
Excavation/Grading *Marsh Excavation *Excavation for Structures/Culverts	X	X/*X
Milling/Pulverize and Relay/Rumble Strips	X	X
Curb & Gutter/Sidewalk/Detectable Warning Yellow/Temporary Pedestrian/Removals Appurtenant concrete work - Driveways *Colored Concrete/Stamping	X	X
Drainage: Culvert/Storm Sewer- Inlets- Manholes/Pipe/Grates/Removals *Surface drains • Pipe Underdrain	X	X
Electrical Work/Lighting/Traffic Signals/Poles • Pedestals/Bases/Loop Detector/Removals *FiberOptic *ITS *(Temp Signals Install and/or Supplier)		*X
Beam Guard/Cable Barrier/Removals	X	X
Erosion Control/Dust Control/Riprap *Turbidity barrier *Tracking Pads	X	X
Clearing and Grubbing	X	X
Gates/Fence/Removal	X	
Landscaping	X	X
Field Office	X	X
Pavement Cutting/Drilling/Sawing	X	X
Pavement Marking/Temporary Marking/Locating No Passing Zones/Removals	X	X
Signs/Posts Markers/Removals	X	X
QMP/Material Testing	X	X
Construction Staking	X	X
Traffic Control • Temporary Tape *Temporary Concrete Barrier *Temp Pedestrian	X/*X	X/*X
Material Supplier	X	X
Trucking: Excavation, Aggregates, Slurry, Asphalt, Millings, Removals *Contaminated soil hauling	X	X
Sweeping	X	X

X/*X Indicates specialty item on this project in addition to typical bid items