



WisDOT DBE Reporter is a publication of the Wisconsin Department of Transportation Office of Business Opportunity and Equity Compliance (OBOEC).

OBOEC Director  
**E. Aggo Akyea**  
(608) 267-9527

DBE Program Chief  
**Michele Carter**  
(414) 438-4587

DBE Reporter Editor  
**Rosalind Roberson**  
(414) 438-2154

DBE Reporter Designer  
**Nancy Templar Schmitt**  
Oneida ESC Group

## INSIDE THIS ISSUE

32nd Annual DBE Workshop Conference .....	1
DBE Triennial Goal Summary Reports.....	2
DBE Profile: Choice Construction.....	3
DBE Profile: Tunji-Lesi CPA, LLC.....	4
DBE Profile: The Highland Group.....	5
I-39/90 Megaproject DBE Contracting Update .....	6
Newly Certified DBE Firms	7-9
VendorNet.....	10
Who's Who in WisDOT DBE Unit .....	11
Preconference DBE Orientation Flyer .....	12

WISDOT

2017 FALL EDITION

# DBE REPORTER

From the Office of Business Opportunity and Equity Compliance

## PURSUE ► WIN ► EXECUTE

### Diversifying Contracts in Design and Construction

**32nd Annual DBE Workshop and Secretary's Golden Shovel Awards**  
Country Springs Conference Center  
**February 13 and 14, 2018**

**Presented by NAMC-WI and WisDOT**



This conference will provide you with the business development tools to help grow your business and explain how to do business with local, state, and federal agencies.

The 32nd Annual DBE Workshop and Secretary's Golden Shovel Awards Conference will feature workshops, networking opportunities and one-on-one time with experts in areas such as banking, insurance and bonding, marketing, and bidding and estimating.

"NAMC recognizes the value that small businesses bring to our state, which is why it's essential to help them learn how to thrive in the transportation and construction industries," said Brian Mitchell, President of the National Association of Minority Contractors-Wisconsin Chapter and Choice Construction Company, Inc.

Although WisDOT gears the conference towards disadvantaged business enterprises, it's open to all businesses, public agencies, vendors and community partners with an interest in building trades and highway construction.

On February 13th at 8:00 am the conference will start with a Preconference DBE Orientation for newly certified DBE firms only. The conference will officially begin with general registration at 9:00 am followed by a series of technical workshops and project detailed presentations. The General Session will start at 12 noon.

On February 14th the Awards Luncheon will recognize noteworthy contractors, consultants, DBE firms and community leaders for their participation in the construction industry. NAMC-WI will honor industry professionals and community leaders with their Golden Champion Award for Leadership followed by the Secretary's presentation of the Golden Shovel Awards.

For more information on the conference or WisDOT's DBE program, call Rosalind Roberson at (414) 438-2154.

TO  
REGISTER  
GO TO  
[www.goldenshovel2018.eventbrite.com](http://www.goldenshovel2018.eventbrite.com)



# WISDOT DBE TRIENNIAL SUMMARY REPORT

## FEDERAL FISCAL YEARS (FFY) 2015, 2016 & 2017

### DBE CONSTRUCTION ACHIEVEMENT

WISDOT DBE CONSTRUCTION ACHIEVEMENT	FFY 2015	FFY 2016	FFY 2017
Overall Annual DBE Goal % for DBE Construction Opportunities	13.00%	13.00%	13.00%
DBE <i>Conscious</i> Achievement	12.02%	6.41%	8.52%
DBE <i>Neutral</i> Achievement	2.01%	4.42%	.99%
<b>Total DBE Construction Achievement (% of Federal Funds)</b>	<b>14.03%</b>	<b>10.83%</b>	<b>9.51%</b>
Federal Funds	\$593,457,648	\$469,256,924	\$624,519,417
DBE Projections (13%) of Federal Funds	\$77,149,494	\$60,977,400	\$81,187,524
DBE <i>Conscious</i> Achievement (DBE Goal Assigned to Projects)	\$71,321,125	\$30,065,324	\$42,618,988
DBE <i>Neutral</i> Achievement (No DBE Goal Assigned to Projects)	\$11,969,687	\$20,742,622	\$4,943,778
<b>Total DBE Construction Achievement</b>	<b>\$83,250,812</b>	<b>\$50,807,946</b>	<b>\$47,562,766</b>

### DBE CONSULTANT ACHIEVEMENT

	FFY 2015	FFY 2016	FFY 2017
Overall Annual DBE Goal % for DBE Consultant Opportunities	19.79%	19.79%	19.79%
DBE <i>Conscious</i> Achievement (% of Federal Funds)	4.44%	6.60%	4.71%
DBE <i>Neutral</i> Achievement (% of Federal Funds)	18.34%	18.98%	17.10%
<b>Total DBE Consultant Achievement (% of FED)</b>	<b>22.78%</b>	<b>25.58%</b>	<b>21.81%</b>
Federal Funds	\$82,947,365	\$61,661,947	\$70,011,957
DBE <i>Conscious</i> Achievement (DBE Goal Assigned to Projects)	\$3,685,709	\$4,071,542	\$3,298,703
DBE <i>Neutral</i> Achievement (No DBE Goal Assigned to Projects)	\$15,212,676	\$11,704,455	\$11,973,152
<b>Total DBE Consultant Achievement of Total Federal Funds</b>	<b>\$18,898,385</b>	<b>\$15,775,997</b>	<b>\$15,271,854</b>

## DBE PROFILE ▪ CONSTRUCTION

### CHOICE CONSTRUCTION COMPANIES, INC.



Brian Mitchell P.E., President

#### Corporate Office

Choice Construction  
Companies, Inc.  
1725 Dolphin Drive, Suite E  
Waukesha WI 53186  
P:(262) 703-5080  
F:(262) 703-5090

#### Memberships

National Association of Minority  
Contractors Wisconsin Chapter  
(NAMC-WI)

Associated General Contractors  
(AGC)

Wisconsin Transportation  
Builders Association (WTBA)

National Minority Supplier  
Development Council (NMSDC)

Brian A. Mitchell, P.E. has been in construction for over 35 years and has managed projects in excess of \$5,000,000. Brian Mitchell and a business partner purchased Choice Construction on December 6, 2007 from its previous owners, Owsley and Pereles. Prior to purchasing Choice Construction Companies, Brian A. Mitchell Construction, Inc. erected several hundred bridges and buildings in five states.

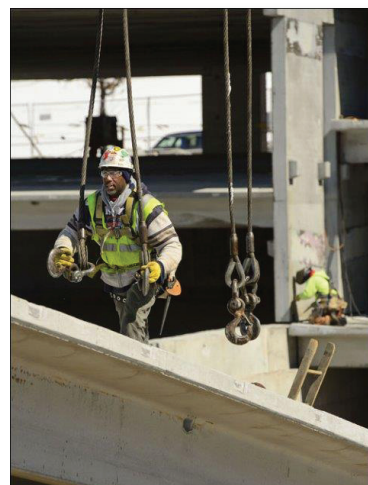
Choice Construction is a unique blend of construction professionals who have joined together in order to provide services that are required but often neglected in the everyday construction world.

Choice Construction management team has over 60 years of combined experience in the construction industry and a staff of over 75 skilled union ironworkers.

Choice Construction has what it takes to meet the needs of owners,

architects and general contractors on a wide variety of construction projects. Choice is proactive in its approach and quick to react when obstacles arise.

As a multi-skilled firm, Choice Construction has erected reinforcing steel, tub girders, precast girders, and downspouts on the Marquette Interchange. Choice performs difficult rehabilitation work as demonstrated by the emergency structural rehabilitation repairs on the Hoan Bridge and the Mitchell Park Domes in Milwaukee.



Milwaukee School of Engineering  
(MSOE) Ramp



Interstate Highway 794

## DBE PROFILE - CONSULTANT TUNJI-LESI CPA, LLC



Adetunji Lesi, President

**Tunji-Lesi CPA, LLC**  
[www.tunji-lesicpa.com](http://www.tunji-lesicpa.com)

**Corporate Office**  
6314 Odana Road, Suite 14  
Madison, WI 53719  
608.721.1745  
Adetunji Lesi, President

### Mission

Our mission is to provide solutions to our clients' accounting problems. We will deliver solutions timely, ethically and responsibly.

Tunji-Lesi CPA, LLC has been providing personalized professional accounting services in the Madison area since 2009. Tunji-Lesi CPA is known for going the extra mile to offer its clients custom-tailored insight, support, and guidance. As a small firm of dedicated accounting professionals, Tunji-Lesi CPA focuses on serving the unique needs of its clients on a one-to-one basis. Tunji-Lesi is accessible, flexible and personal.

### Services provided

#### Tax Services

Tunji-Lesi CPA, LLC offers a broad spectrum of comprehensive and thorough year-round tax assistance for individuals and small businesses.

Tax services include:

- Small business tax preparation
- Comprehensive tax advice
- Tax planning
- Estate, gift and trust tax return preparation
- Tax problem resolution
- Sales tax services
- Corporate tax returns

#### Payroll Services

Payroll processing can be a labor intensive chore, particularly for small businesses with limited staff. Tunji-Lesi CPA, LLC, can provide efficient, reliable payroll processing at reasonable price. These services may include printing payroll checks or direct-deposits, managing deductions, allowances, and withholding, filing quarterly and year-end state and federal payroll tax forms and making electronic tax payments, as well as comprehensive payroll reporting to help you manage your staff and run your business efficiently. Tunji-Lesi are the payroll and compliance experts.

#### Accounting Services

**Tunji-Lesi CPA, LLC**

Tunji-Lesi recognizes that accurate, well-organized financial information is critical to your corporate and personal financial health. Tunji-Lesi offers:

- Accounting preparation, reviews and compilation services
- Financial expert analysis
- Financial forecasts and projections
- Accounting and financial covenant compliance

#### Business Consulting Services

Tunji-Lesi's experienced staff of business consultants are committed to assisting you through every phase of the business life cycle, applying their experience and insight to provide you with meaningful and practical strategies and solutions to address the issues facing your business. Consulting Services include:

- Incorporation and new business plans
- Management consulting services
- Business purchase and sale analysis
- Investment review and analysis
- Debt structures, leasing and financial services consulting





## DBE PROFILE - CONSULTANT THE HIGHLAND GROUP



Steve Simpson

**The Highland Group**  
[www.highlandgrp.org](http://www.highlandgrp.org)

**Corporate Office**  
110 North Third Street  
Watertown, WI 53094  
920.262.2150

The Highland Group is located in the City of Watertown, Wisconsin and is a firm primarily involved in the business of real estate purchasing for State of Wisconsin and local government transportation projects. The firm has been a certified DBE in Wisconsin since 1999 and is eligible to participate on federal and locally financed projects sponsored by Milwaukee County and Federal projects with the Wisconsin Unified Certification Program which includes Milwaukee County, Wisconsin Department of Transportation, Dane County and the City of Madison. The Highland Group typically has several real estate acquisition projects under contract at any one given time.

The Highland Group is owned by Steve Simpson, a Native American and member of the Cherokee tribe. Steve started working in the right of way industry in 1981 in Tulsa, Oklahoma. While working for a major oil and gas corporation, he oversaw the acquisition of easements for salt water disposal, natural gas and crude oil pipelines and various other easements associated with the oil and gas industry. In 1992, he assumed the position of Regional Manager for the Watertown, Wisconsin office of an Illinois based right of way acquisition firm.

After three years in Watertown, Steve formed a new land acquisition service company, The Highland Group, to complete the unfinished contracts. Since its inception, The Highland Group

has successfully acquired in excess of 4,700 parcels for federal, state and locally funded projects under Wis. Stats. Ch. 32.

The Highland Group's staff consists of Steve Simpson, Negotiator/Project Manager; Sarah Lamp, Real Estate Specialist and Renee Held, the company's Document Specialist. Clerical support is provided by Nancy Flood. Steve and Sarah are on the LPA Real Estate Statewide list of approved Fee Negotiation/Relocation Consultants.

Recently Steve and The Highland Group participated in a business assessment process sponsored by the American Indian Chamber of Commerce of Wisconsin and the WisDOT Inter-Tribal Task Force. This assessment process, known as the Early Intervention Plan (EIP) was designed to assess a business's strengths and weaknesses and help develop a plan to address their current challenges. This plan included providing business development resources to help the company achieve greater success moving forward.

For The Highland Group, the EIP identified needs in the legal, marketing, networking, social media, financial and wage information posting requirement areas. Resources were identified and deployed to assist The Highland Group with these areas of need.

The WisDOT DBE office is currently in the process of developing a proactive process similar to the EIP to offer to the entire WisDOT DBE community. Stay tuned to take advantage of this program as it is developed and offered to DBE's statewide.





# MEGAPROJECT DBE CONTRACTING UPDATE

## I-39/90 EXPANSION PROJECT

### WISCONSIN'S FIRST Diverging Diamond Interchange

Wisconsin's first Diverging Diamond Interchange (DDI), located at I-39/90 and WIS 11 (Avalon Road) just south of Janesville, was recognized by *The Daily Reporter* in its Top Projects 2016 edition.

The DDI was completed in fall 2016 as part of the I-39/90 Expansion Project. The DDI design was selected at this interchange to manage traffic patterns with a high level of left turns onto the Interstate. DDIs operate by shifting traffic to the opposite side of the road while motorists are within the interchange. This reduces the number of conflict points and alleviates congestion by allowing for free flowing, left turns onto the Interstate.



This DDI has proven effective at managing traffic flow and its design will be used at interchanges along I-39/90 - WIS 26 and WIS 81. DDIs are also being considered at other Wisconsin interchanges. More than 20 DBE firms participated in the construction of Wisconsin's first Diverging Diamond Interchange.

### I-39/90 Expansion Project / Contract Execution to Completion: 2015-2021 / Dane County and Rock County

AS OF AUGUST 2017	CONSTRUCTION CONTRACTS	DESIGN ENGINEERING	CONSTRUCTION MANAGEMENT
Total Contracted Amount	\$234,523,380	\$113,067,071	\$13,105,227
DBE Contracted Amount	\$2,648,584	\$25,045,465	\$800,381
<b>DBE Share</b>	<b>1%</b>	<b>22%</b>	<b>6%</b>
Total Paid Amounts	\$166,823,139	\$83,883,587	\$8,737,454
DBE Paid Amounts	\$5,465,138	\$15,931,140	\$676,863
<b>DBE Share Paid</b>	<b>3%</b>	<b>19%</b>	<b>8%</b>

### DBE Firms Performing on I-39/90 Projects

#### Brown R Cartage Company

#### Db a Traffic Solutions

Elgin, IL – Trucking

#### Bullet Transit Co, Inc.

Madison, WI – Trucking

#### Camelot Metals, Inc. – Blaine, MN

Fabrication of Structural Steel

#### Choice Construction Companies, Inc.

Menomonee Falls, WI – Concrete

#### Community Engineering Building Serv.

Milwaukee, WI – Consultant

#### Con-Cor Company, Inc.

Menomonee Falls, WI – Concrete

#### Crowley Construction Corp

Milwaukee, WI – Pavement Marking

#### Dionne Constr. & Traffic Co, Ltd

Milwaukee, WI – Traffic Control

#### Falcon Drilling & Blasting, Inc.

Omro, WI – Specialty Trade Work

#### Fischbach, Inc.

Mauston, WI – Trucking

#### Georgie Transport, Inc.

Caledonia, WI – Trucking

#### Gestra Engineering, Inc. – Milwaukee, WI

Materials Sampling/Testing

#### Hard Rock Sawing & Drilling Specialist Co.

Keshena, WI – Concrete

#### Heider & Bott Company

Milwaukee, WI – Material Supplier

#### Interstate Sealant & Concrete, Inc.

Waukesha, WI – Concrete

#### Lac Courte Oreilles Development Corp.

Hayward, WI – Construction Contractor

#### Mincon, Inc. – Forest Junction, WI

Concrete Staining & Painting

#### Northeast Construction

& Landscaping, Inc.

Oneida, WI – Trucking

#### R A Seaton Contractors Services, LLC

Belvidere, IL – Manufacturer & Supplier of Redi-Mix Concrete

#### Robin's Trucking, LLC

Whitewater, WI – Trucking

#### Schrock Trucking, LLC

Cottage Grove, WI – Trucking

#### South Star, Inc.

Milwaukee, WI – Trucking



# NEWLY CERTIFIED DBE FIRMS

## FEDERAL FISCAL YEARS (FFY) 2016 AND 2017

DBE BUSINESS TYPE KEY	2016*	2017
DBE Consultants	13	20
DBE Contractors	16	5
DBE Suppliers	4	7
DBE Truckers	6	11
Other DBE Business Type	3	3
<b>Eligible Firms Certified DBE in FFY 2016 and 2017</b>	<b>42</b>	<b>46</b>

COMPANY NAME	LOCATION	STATE	WORK TYPE
1st Aerow Valuation Group, LLC	Chicago	IL	Offices of Real Estate Appraisers
ABT Products & Services	Huntington	NY	Electrical Contractors
*Actuarial - Insurance Data Analyst Consulting, LLC	Missouri City	TX	Actuarial Consulting Services
*AG Connors Trucking, LLC	Milwaukee	WI	Trucking
*American Concrete Restorations, Inc.	Lemont	IL	Shotcrete, Spray Applied Waterproofing
*Apex Consulting Engineers, LLC	Chicago	IL	Civil Engineering Design Services
Applied Controls & Contracting Services	South Holland	IL	Electrical Contractors
Ark Engineering Associates, Ltd	Chicago	IL	Engineering Services
*Aztec Construction & Trucking Company	Woodville	WI	Trucking
Baseline Supply, LLC	Monroe Township	NJ	Supplier of Construction Materials
*Behnke Materials Engineering, LLC	Beloit	WI	Testing Laboratories
*Bloom Companies, LLC	Milwaukee	WI	Civil Engineering Design Services
*Bullock Construction, Inc.	Easton	MD	Railroad Construction and Maintenance
*Bumpy's Steel Erection, LLC	Saint Louis	MO	Erection of Structural Steel
*Camelot Metals, INC	Blaine	MN	Fabrication of Structural Steel
*Capitol Government Contract Specialist	Irvine	CA	Public Transit Project Program Management
CDM Consultants, LLC	Prescott	WI	General Management Consulting Services
*CEP Civil Engineering Professionals, LLC	Madison	WI	Civil Engineering Design Services
*Chandler & Campbelle Investment Group	Palm Beach Gardens	FL	Management Consulting
Chicago Advisors	Wilmette	IL	Custom Computer Programming Services
Coldgon Projects International, Inc.	South Range	WI	Miscellaneous Manufacturing
Compass Solutions LLC	Washington	DC	Custom Computer Programming Services
Dama Consultants, Inc.	Chicago	IL	Landscape Architectural Services

\*2016 Newly Certified DBE Firms

CONTINUED ON NEXT PAGE



# NEWLY CERTIFIED DBE FIRMS (CONTINUED)

## FEDERAL FISCAL YEARS (FFY) 2016 AND 2017

COMPANY NAME	LOCATION	STATE	WORK TYPE
*Davidson Construction Supply	Creston	IL	Rebar and Epoxy Bar Fabrication and Delivery
DDE INC dba General Cable Corp.	Smyrna	GA	Wholesale Trade Agents and Brokers
De Vor Communications, LLC	Germantown	WI	Public Relations Agencies
Dean Enterprises, LLC	Fond Du Lac	WI	Septic Tank and Related Services
DES Wholesale, LLC	Milton	GA	Natural Gas Distribution
*Diversified Veterans Engineering & Tech Services	Warner Robins	GA	Business Process, Production & Logistics Consulting
*DMS Transportation, LLC	Milwaukee	WI	Trucking
DND Electric, Inc.	Des Plaines	IL	Power and Communication Line Construction
*Equipment Specialists of Chicago, LLC	Palos Hills	IL	Heavy Equipment Repair
EverLights, Inc.	Skokie	IL	Solid Waste Collection
Flying C Transportation, LLC	Silver Lake	WI	Trucking
*Fung HWA, LLC	Beltsville	MD	Transportation Construction Products Supplier
FWA Transport, LLC	Eagle River	WI	Trucking
*G. W. Peoples Contracting Co., Inc.	Arlington	VA	Railroad Track Construction
Graph Mark Custom Printing	Superior	WI	Commercial Screen Printing
Great Lakes Metals Corp.	Bridgeview	IL	Metal Service Centers
*Hardlines Design Company	Columbus	OH	Architectural Services
*HR Consultants, Inc.	Johnstown	PA	Human Resource Management and Consulting
*Ignite Oil, Inc.	Appleton	WI	Fuel Management Consulting
IMEX Cargo, LLC	East Boston	MA	Freight Transportation Arrangement
Ketchum Professional Resources, LLC	Portage	MI	Wholesale Trade Agents and Brokers
KLC Trucking, LLC	Milwaukee	WI	Trucking
*Koppa Group, LLC	Green Bay	WI	Project Management
Legacy Architecture, Inc.	Sheboygan	WI	Architectural Services
*Level - 1 Global Solutions, LLC	Chicago	IL	Technology Infrastructure System
*MA Rebar Services, Inc.	Chicago	IL	Installation of Rebar
McCurdy Rail Services	Canton	GA	Transportation Equipment and Supplies
*MinCon, Inc.	Forest Junction	WI	Concrete Staining and Painting
*Moriarty Scheduling Services	Minneapolis	MN	Critical Path Scheduling Services
MTC MORENO, Inc.	Rockford	IL	Trucking
*Northeast Construction & Landscaping, Inc.	Oneida	WI	Trucking
P.I.E. Management, LLC	Detroit	MI	Administrative Management

\*2016 Newly Certified DBE Firms

CONTINUED ON NEXT PAGE





# NEWLY CERTIFIED DBE FIRMS (CONTINUED)

## FEDERAL FISCAL YEARS (FFY) 2016 AND 2017

COMPANY NAME	LOCATION	STATE	WORK TYPE
Paden Transport, Inc.	Rockford	IL	Trucking
PC Lan Services of Wisconsin	Milwaukee	WI	Computer Systems Design Services
Public Solutions Group, Inc.	Duluth	MN	Engineering Services
*RA Seaton Contractors Services, LLC	Belvidere	IL	Manufacturer and Supplier of Redi-Mix Concrete
RNR Trucking, Inc.	Shorewood	IL	Trucking
Robin's Trucking, LLC	Whitewater	WI	Trucking
*ROC Equipment, LLC	Salt Lake City	UT	Leasing & Sales of Heavy Construction Equipment
*Roraima Consulting, Inc.	Rosedale	NY	Procurement Consulting
S.A.L. Traffic Control	Chicago	IL	Highway, Street, & Bridge Construction
Schweiger & Baumann Trucking, LLC	West Allis	WI	Trucking
*Shanz Enterprises, LLC	Poynette	WI	Trucking
SJ Landscaping, LLC	Cudahy	WI	Landscaping Service and Trucking
Solved Engineering, LLC	Chicago	IL	Engineering Services
Spencer Accounting Group, LLC	Waukesha	WI	Tax Preparation Services
Stellar Services	New York	NY	Custom Computer Programming Services
Stormwater Plans, LLC	Glendale	AZ	Engineering Services
Street Kingz, LLC	Madison	WI	Trucking
*Success Strategies, Inc.	Quincy	MA	Technical and Professional Documentation
*Surface Prep & Maintenance	Reno	NV	Asphalt Sealing
*Swanson & Associates	New Orleans	LA	Insurance Agency
*Taylor Paving, Inc.	Webster	WI	Material Supplier
TD Supply Specialists, LLC	Neenah	WI	Industrial Supplies Merchant Wholesalers
The Quotient Group, LLC	Greenville	WI	Marketing Consulting Services
Thornton Rave Steel Fabrication, LLC	Normal	IL	Fabricated Structural Metal Manufacturing
*Transit Safety & Security Solutions, Inc.	Denver	CO	Safety and Security Consulting
TransLand Engineering Group LLC	Aurora	IL	Engineering Services
*Trinity Technology Services, Inc.	South Holland	IL	Design and Installation of Temperature Control Systems
*Uptown Trucking, LLC	Wauwatosa	WI	Trucking
*White Buffalo Trucking, LLC	Seymour	WI	Trucking
*Wisconsin Interstate Contracting, LLC	Merrill	WI	Landscaping
Zackowski Trucking, LLC	Columbus	MN	Trucking
*Zara, LLC	Milwaukee	WI	Trucking

\*2016 Newly Certified DBE Firms



# WHO'S WHO IN THE DBE PROGRAM



**Aggo Akyea**  
OBOEC Director  
(608) 267-9527



**Michele Carter**  
DBE Program Chief  
(414) 438-4587 Milwaukee

## DBE SUPPORT SERVICES & BUSINESS DEVELOPMENT



**Paul Ndon**  
DBESS Office Liason and  
IS Business Automation Senior  
(414) 438-4584 Milwaukee



**Rosalind Roberson**  
Civil Rights Urban Outreach  
Strategist  
(414) 438-2154

## DBE CERTIFICATION & MONITORING



**John Franklin**  
Senior Certification Analyst  
(608) 264-8721



**Vincent Fisher**  
Certification Analyst  
(608) 266-8216

## CONTRACT COMPLIANCE & GOOD FAITH EFFORT



**Oluyemi Falomo**  
DBE Engineer / Technical Advisor  
(608) 264-9528 Madison  
(414) 659-0487 Mobile



**Deborah Albright**  
DBE Program and GFE Analyst  
(608) 266-0503

## LABOR DEVELOPMENT & EEO COMPLIANCE



**Suki Han**  
Federal Reports Specialist  
and Central Office Liaison  
(608) 267-3849



**Jenna Fogarty**  
Labor Development Specialist  
(414) 438-2157