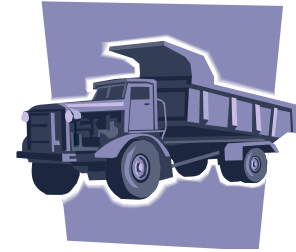


The Wisconsin Department of Transportation Prevailing Wage Guidelines for Trucking



Definitions of Materials

1. **Mineral aggregates:** sand (used for granular sub-base, granular backfill, or structural backfill), gravel, crushed stone, crushed/screened recycled concrete, crushed rock, breaker run, slag, screenings, other hard and durable mineral soil or rock fragments or granulated materials.
2. **Non-mineral aggregates:** clay, topsoil, fill dirt, silt, boulders, riprap, wall stone, loam, gumbo, loess, peat muck, hardpan, soils or mixed earth containing scattered rock and vegetative materials.
3. **Manufactured or Processed Materials:** concrete, ready-mix, asphaltic concrete pavement, asphalt, mastic, mortar, plaster, macadam and similar processed or manufactured materials.

Definition of Sources

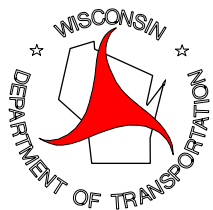
1. **Commercial:** a fixed place of business from which the establishment supplies processed or manufactured materials or products.
2. **Dedicated or nearly so:** a facility dedicated exclusively or nearly so to the contract or project and which is on the site of work or adjacent or virtually adjacent to the site of the work.
 - a. Facilities which have been established and used for other projects and contracts by a supplier of materials before opening of bids and that are not directly on the site of the work are not dedicated or nearly so.

Other Definitions

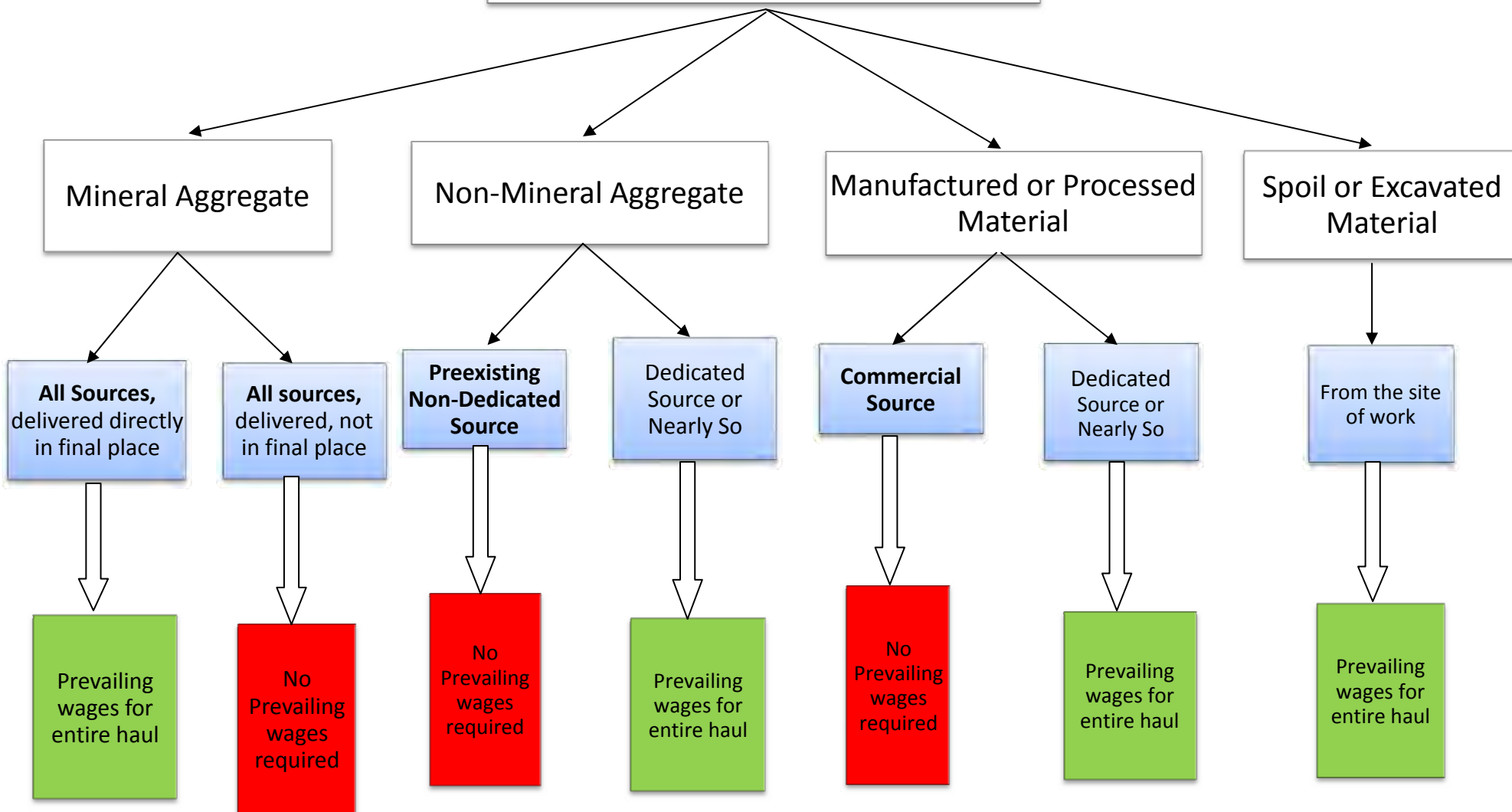
1. **Delivery:** materials that are deposited directly on the site of the project in final place from the transporting vehicle through spreaders, dozers, graders, or other equipment. For highways, in final place includes mineral aggregates dumped on the roadbed from the transporting vehicle that are further bladed or spread.
2. **Facility:** all or any portion of a building, a structure, land, infrastructure, or other real property.

Additional Notes

1. Materials used to construct causeways must follow the same trucking guidelines as any other haul.
2. If hauling spoil and returning empty or with other materials (i.e., commercial asphalt or concrete), haul is covered round trip.
3. More information can be found at: <http://roadwaystandards.dot.wi.gov/hcci/labor-wages-eeo/index.shtm>



Types of Material



EFFECTIVE WITH THE JULY 2011 LETTING