

12/4/2018

Legend
Vacancies/Positions Approved
Vacancies/Pos Under Consideration
WAU = Waukesha
WAL = West Allis

SOUTHEAST REGION		
10-22-00-00-00		
021009	WAU	100
Johnson, Dewayne DOT Manager		

SOUTHEAST REGION		
10-22-00-00-00		
FOXCONN DEVELOPMENT		
013678	WAU	100
Wallace, Brett DOT Manager		

10-22-00-00-00		
004542	WAU	100
Schmit, Sheri DOT Manager		

037638	MAD	100
Xinyi Liu (Avril) PPA		
335838	WAU	100
Geidel, Stephanie PPA		

0	2
0	

0	3
0	

5

12/4/2018

Legend
Vacancies/Positions Approved
Vacancies/Pos Under Consideration
WAW = Waukesha
WAL = West Allis

Southeast Region		
021009	Johnson, Dewayne	DOT Manager
004542	Schmit, Sheri	Deputy Director DOT Manager
Systems Planning		
10-22-22-00-00		
011756	Barth, Anthony	WAW DOT Eng Chief 100

Planning Unit 1		
010931	10-22-22-31-00	100
Levy, Andrew	WAW URP Supv	Econ Dev/Multi Modal

Planning Unit 3		
007592	10-22-22-33-00	100
Elkin, Robert	WAW CE Trans Supv	

Planning Unit 4		
003532	10-22-22-35-00	100
Higdon, Hans	WAW CE Trans Supv	

Economic Development		
009432	WAW	100
Callin, Elizabeth	URP Adv	Economic Dev
Data Analysis		
301732	WAW	100
DesRoches, Brent	CE Trans Sr	
Fmr Dickerson 023272	WAW	100
VACANT	URP	Forecasting/GIS
Multi-Modal Planning		
319713	WAW	100
Squires, Christopher	URP Adv	Bike Ped
Fmr Hannig 319712	WAW	100
VACANT	URP	Bike Ped
319710	WAW	100
Furdek, Frank	URP Adv	
Fmr Michelson 319711	WAW	100
VACANT	URP Adv	

Corridor Studies		
032161	WAW	100
Wheeler, Andrew	CE Trans Adv	
318282	WAW	100
Valley, Alexander	CE Trans Sr	
Access Management		
002383	WAW	100
Koehnke, Kevin	CE Trans Adv	
Fmr Koehnke	WAW	100
VACANT	CE Trans Sr	
015178	WAW	100
Voight, Susan	Trans Spec Adv	
012714	WAW	100
King, Susan	Trans Spec Sr	
001534	WAW	100
Reikowski, Patricia	Trans Tech Adv	

Preliminary Design & Scoping		
011471	WAW	100
Liptack, James	CE Trans Adv	Pgm Scoping
031990	WAW	100
Bernard, Ryan	CE Trans Adv	
007174	WAW	100
Stollenwerk, Roy	CE Trans Adv	
029059	WAW	100
Gard, Greg	CE Trans Sr	
Fmr Saunderson	WAW	100
VACANT	CE Trans Sr	
008864	WAW	100
Schumacher, James	CE Trans Sr	
011639	WAW	100
Wiesen, Joshua	CE Trans Sr	
007422	WAW	100
Amegashitsi, Kwame	CE Trans Sr	
018294	WAW	100
Good, Anthony	URP Adv	
Programming		
012861	WAW	100
Schmidt, Robert	CE Trans Adv	Local Pgm Mgr
301861	WAW	100
Flower, Cynthia	CE Trans Adv	State Pgm Mgr
015715	WAW	100
Burns, Roslin	Prog Pol Anl Adv	Pgm Mngmt/Analysis
Fmr Smith	WAW	100
VACANT	CE Trans Sr	
304119	WAW	100
Sizer, Laurie	Trans Prog Coord Adv	
017010	WAW	100
Bender, Kathryn	Trans Prog Coord Adv	

3
0

5

1	8
0	(includes Engineering Chief position)

2
0

14

27

12/4/2018

Legend
Vacancies/Positions Approved
Vacancies/Pos Under Consideration
WAWU = Waukesha
WAL = West Allis

Southeast Region			
021009	Johnson, Dewayne	DOT Manager	
004542	Schmit, Sheri	Deputy Director	
		DOT Manager	
Systems Operations			
		10-22-23-00-00	
001152	Bliesner, Brian	DOT Eng Chief	100

Maintenance Unit 1			
		10-22-23-11-00	
020863	Tran, Bao	WAWU	100
		CE Trans Supv	

Traffic Unit 1			
		10-22-23-21-00	
023677	Haug, John	WAWU	100
		CE Trans Supv	

Traffic Unit 2			
		10-22-23-22-00	
311822	Berghammer, Donald	WAWU	100
		CE Trans Supv	100

Traffic Unit 3			
		10-22-23-23-00	
009190	Dobersek, Mitzi	WAL	100
		CE Trans Supv	

Structures			
002757	Bolka, John	WAWU	100
		CE Trans Adv	
003586	Jashinsky, Dan	WAWU	100
		CE Trans Adv	
018448	Zemke, Jason	WAWU	100
		CE Trans Adv	
338627	Brooks, Julie	WAWU	100
		CE Trans Adv	
011475	Reay, Scott	WAWU	100
		CE Trans Sr	
315529	Barsch, Leah	WAWU	100
		CE Trans Sr	
011250	Buckett, Christopher	WAWU	100
		Trans Spec Adv	
Maintenance			
008349	Ambrose, Paul	WAWU	100
		CE Trans Adv	
006758	Martin, Nicholas	WAWU	100
		CE Trans Adv	
022155	Jilling, Jason	WAWU	100
		CE Trans Sr	
020501	Peiffer, Kevin	WAWU	100
		Trans Spec Adv	
007888	Weiglein, James	WAWU	100
		Trans Spec Adv	
012932	Wolf, Gary	WAWU	100
		Trans Spec Adv	
021010	Ledzian, Michelle	WAWU	100
		Trans Spec Adv	
021259	Lantz, Gail	WAWU	100
		Trans Spec Adv	
017567	Zeman, David	WAWU	100
		Trans Spec Adv	
011994	Meyer, Julie	WAWU	100
		Financial Spec Sr	

Safety			
003736	Dedrick, Daniel	WAWU	100
		CE Trans Adv	
	Fmr Amegashitsi '023273	WAWU	100
	VACANT	CE Trans Sr	
021788	Borck, Michael	WAWU	100
		CE Trans Sr	
038507	Weinfurt, Brian	WAWU	100
		Trans Spec Sr	
Signals			
004462	Wofford, Derrin	WAWU	100
		CE Trans Adv	
030642	Brantner, David	WAWU	100
		CE Trans Adv	
327131	Murphy, Joyce	WAWU	100
		CE Trans Adv	
011786	Sward, Stephanie	WAWU	100
		CE Trans Sr	
022332	Gates, Jarrett	WAWU	100
		CE Trans Sr	
036133	Virk, Parwinder	WAWU	100
		CE Trans Sr	WP
014891	Cowap, Matthew	WAWU	100
		CE Trans Sr	

Work Zone			
020500	Klein, Rebecca	WAWU	100
		CE Trans Adv	
Signing & Marking			
020024	Heydel, Thomas	WAWU	100
		CE Trans Adv	Idwrkr
008385	Steel, Donald	WAWU	100
		CE Trans Sr	
021986	Martens, Karen	WAWU	100
		CE Trans Sr	
006549	Newton, Dennis	WAWU	100
		Trans Spec Adv	Idwrkr
021268	Saldivar, Chuck	WAWU	100
		Trans Spec Sr	
019312	Buckett, Jennifer	WAWU	100
		Trans Spec Sr	
Traffic Impact Analysis			
022061	Blackwood, Allison	WAWU	100
		CE Trans Adv	
338628	Baumann, Arthur	WAWU	100
		CE Trans Adv	
013803	Boyke, Thomas	WAWU	100
		CE Trans Adv	
302103	Malicki, Dan	WAWU	100
		CE Trans Sr	
022665	Ashenfelter, Dan	WAWU	100
		CE Trans	WP
001614	Pawlak, Samantha	WAWU	100
		CE Trans	
CADD			
011123	Wagner, Scott	WAWU	100
		Trans Spec Adv	
022536	Vande Leest, Cynthia	WAWU	100
		Trans Spec Adv	

Electrical			
030766	Cauley, Dennis	WAL	100
		Craftsworker Lead	
014461	Joerres, Eugene	WAL	100
		Electrician	
017555	Adamczyk, Peter	WAL	100
		Electrician	
020913	Biala, Jeffrey	WAL	100
		Electrician	
029431	Dembiec, Joseph	WAL	100
		Electrician	
034402	Petersen, Anthony	WAL	100
		Electrician	
031367	Oliver, Kurtis	WAL	100
		Electrician	
006671	Cowan, Joel	WAL	100
		Electrician	
006865	Mogilka, Rhonda	WAL	100
		Trans Tech Sr	
Elect Unit Support			
003615	Johns-Konkol, Bree	WAL	100
		Trans Tech Adv	
302102	Sayavong, David	WAL	100
		Trans Tech Jrny	
Lighting			
000949	Perea, Eric	WAL	100
		CE Trans Sr	
021256	Stoetzel Sr, Patrick	WAL	100
		Trans Tech Adv 2	

0 18
0

1 12
0 (includes Eng Chief position)

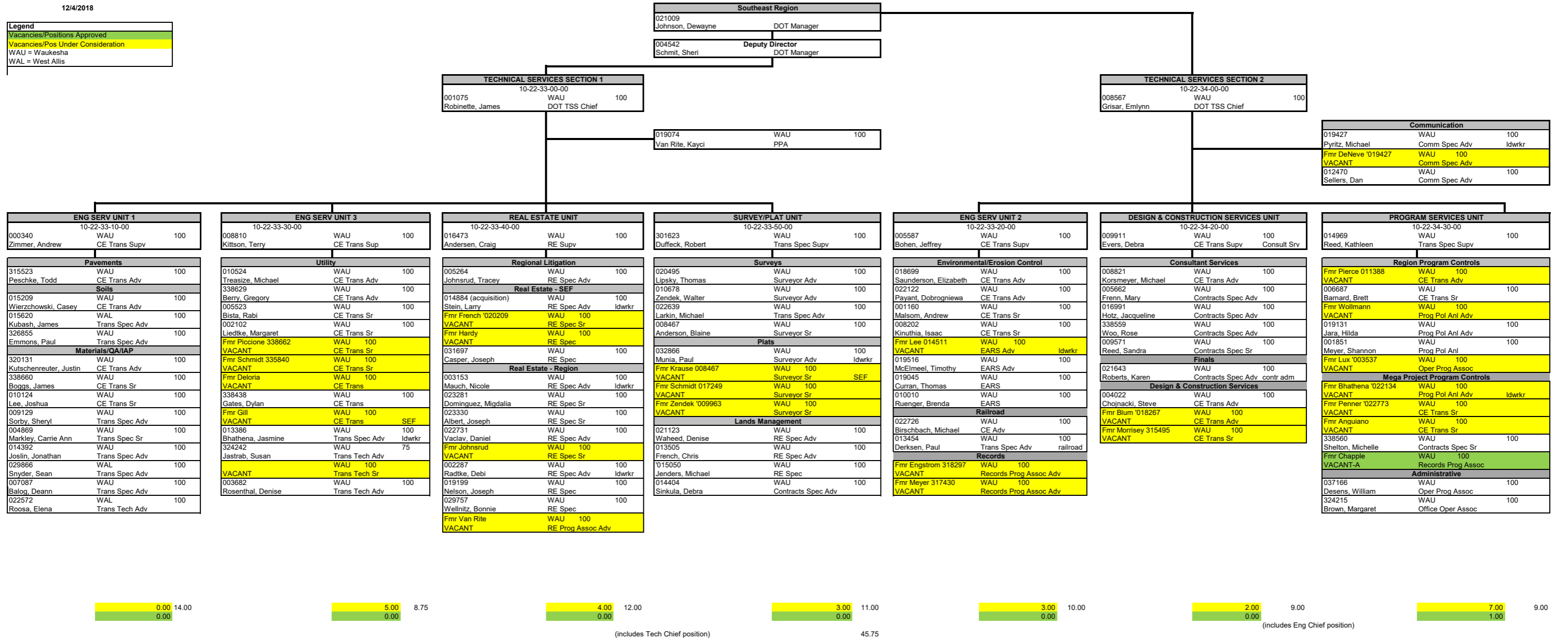
0 16
0

0 14
0

60.00

12/4/2018

Legend
Vacancies/Positions Approved
Vacancies/Pos Under Consideration
WAU = Waukesha
WAL = West Allis



12/4/2018

Legend
Vacancies/Positions Approved
Vacancies/Pos Under Consideration
WAW = Waukesha
WAL = West Allis

Southeast Region	
021009	Johnson, Dewayne DOT Manager
004542	Schmit, Sheri Deputy Director DOT Manager

Project Development continued on next page

Project Development Section 1	
10-22-31-00-00	
008282	Nguyen, David WAW DOT Eng Chief 100

Project Development Section 2	
10-22-32-00-00	
006648	Olapo, Olubunmi WAW DOT Eng Chief 100

PDS Unit 1		PDS Unit 2		PDS Unit 3		PDS Unit 4		PDS Unit 5		PDS Unit 6		PDS Unit 7		PDS Unit 8	
10-22-31-10-00		10-22-31-20-00		10-22-31-30-00		10-22-32-10-00		10-22-32-20-00		10-22-32-30-00		10-22-32-40-00		10-22-32-50-00	
016202	Obenberger, Jay WAW CE Trans Supv 100	313623	Nag, Manojoy WAW CE Trans Supv 100	018855	Adeniyi, Adetoye WAW CE Trans Supv 100	022014	Eruchalu, Benedict WAW CE Trans Supv 100	008458	Cannon, Janet WAW CE Trans Supv 100	035852	Lopez, Adrian WAW CE Trans Supv 100	006048	Shahin, Reem WAW CE Trans Supv 100	338577	Hossain, Mohammad WAW CE Trans Supv 100
313821	Sackman, Heather WAW CE Trans Adv 100	006762	Pritzlaff, Frank WAW CE Trans Adv 100	Local Program w/ Management Oversight		010525	Cain, Douglas WAW CE Trans Adv 100	011165	Gilbertson, Allen WAW CE Trans Adv 100	005560	Kanzenbach, John WAW CE Trans Adv 100	011792	Pluemmer, Brian WAW CE Trans Adv 100	338632	Krummel, Charles WAW CE Trans Adv 100
338634	Kiepczynski, Kenneth WAW CE Trans Adv 100	005728	Hoff, Steven WAW CE Trans Adv 100	338675	Zapp, Mark WAW CE Trans Adv 100	006379	Ly, Nguyen WAW CE Trans Adv 100	003343	Suydam, Justin WAW CE Trans Adv 100	318293	Flierl, Kurt WAW CE Trans Adv 100	004243	Shaffer, Vida WAW CE Trans Adv 100	338673	Boothby, Brian WAW CE Trans Adv 100
034964	Rohde, Andrew WAW CE Trans Sr 100	002898	Dahlgren, Jason WAW CE Trans Adv 100	004497	Hoff, Steven WAW CE Trans Adv 100	033477	Bellin, Robert WAW CE Trans Adv 100	010271	Jenks, Julie WAW CE Trans Adv 100	338666	Schnurer, Ryan WAW CE Trans Sr 100	338630	Hanna, Christine WAW CE Trans Adv 100	338670	Fischer, Lance WAW CE Trans Sr 100
338446	Erdmann, Thomas WAW CE Trans 100	338663	Varnes, Jacob WAW CE Trans Sr 100	002700	Kramer, Kathleen WAW CE Trans Adv 100	013173	Rotter, Steven WAW CE Trans Sr 100	313629	Metzer, Gary WAW CE Trans Adv 100	338441	Martinez, Rodrigo WAW CE Trans Sr 100	018526	Wilfert, Mark WAW CE Trans Adv 100	338667	Sarauer, Adam WAW CE Trans Sr 100
001098	Scianni, Robert WAW CE Trans 100	Fmr Saunderson	WAW 100	018618	Bonack, Joan WAW CE Trans Adv 100	018631	Mitra, Priya WAW CE Trans Sr 100	315530	Karri, Malathi WAW CE Trans Sr 75	Fmr Frye 338669	WAW 100	017727	Yang, Vang Neng WAW CE Trans Sr 100	009708	Freund, Andrew WAW CE Trans Sr 100
018866	Peterson, Brad WAW CE Trans Sr 100	Fmr Dickman	WAW 100	Fmr Maas 014633	WAW 100	005857	Stark, Gary WAW CE Trans Sr 100	333888	Engerson, Jonathan WAW CE Trans Sr 100	VACANT	CE Trans Sr	018549	Villaca, Martin WAW CE Trans Sr 100	Fmr Kuhn 338668	WAW 100
		Fmr Dickman	WAW 100	VACANT	CE Trans Sr	007140	Smith, Clayton WAW CE Trans Sr 100	301523	Schroeder, Jennifer WAW CE Trans Sr 100	Fmr Marchant 022899	WAW 100	002636	Marshall, Dawn WAW CE Trans Sr 100	VACANT	CE Trans Sr
		019680	Dole, Keegan WAW CE Trans Sr 100	338665	Hafeman, Greg WAW CE Trans Sr 100	013566	Taetsch, Amy WAW CE Trans Sr 100	021125	Guenette, Jeffrey WAW CE Trans Sr 100	VACANT	Trans Spec Adv	022759	Martin, Frederick (Keith) WAW Trans Spec Adv 100	000529	Meyer, Aaron WAW Trans Spec Adv 100
				009328	O'Connell, Timothy WAW CE Trans Sr 100	338440	Gomez, Roberto WAW CE Trans Sr 100	301858	Smith, Matthew WAW Trans Spec Adv 100	315521	Conrad, Christopher WAW Trans Tech Adv 100	022334	Dillingham, Matthew WAW CE Trans Sr 100	023303	Seeton, Susan WAW Trans Spec Sr 100
				014477	Benn, Christal WAW Contracts Spec Sr 100	003449	Pinter, Andrew WAW CE Trans Sr 100	Guenette, Jeffrey	WAW CE Trans Sr			335836	McKinney, Sean WAW CE Trans Sr 100	Fmr Meyer	WAW 100
						Fmr Sooman 037948	WAW 100	Fmr Strait	WAW 100			029127	Matheny, Robert (Brett) WAW CE Trans Sr 100	VACANT	Trans Spec Sr
						VACANT-A	CE Trans	VACANT	CE Trans Sr			Fmr Sitley 001846	WAW 100		
						338443	Jackson, Marcus WAW CE Trans Sr 100	001924	Beinlich, Tyler WAW CE Trans Sr 100			VACANT	CE Trans Sr		
						004096	Hazbavi, Ehtesam WAW CE Trans 100	014857	Theo, Peter WAW CE Trans Sr 100			338445	Anani, Sherine WAW CE Trans 100		
						Fmr Klipstein	WAW 100	313632	Gill, Jonathan WAW CE Trans Sr 100			001914	Orner, Thomas WAW Trans Spec Adv 100		
						VACANT	CE Trans Sr	Fmr Kmpotich '020356	WAW 100			320214	Schmidt, Judene WAW CADD Spec Sr 100		
								VACANT	CE Trans						
								020356	Williams, Marlina WAW CE Trans 100						
								019437	Haynes, Ronnie WAW CADD Spec Sr 100						

0.00	7.00
0.00	

2.00	7.00
0.00	(includes Eng Chief position)

2.00	9.00
0.00	

1.00	13.00
1.00	

2.00	14.75
0.00	(includes Eng Chief position)

2.00	8.00
0.00	

2.00	14.00
0.00	

2.00	8.00
0.00	

Legend
Vacancies/Positions Approved
Vacancies/Pos Under Consideration
WAU = Waukesha
WAL = West Allis

Project Development continued

Southeast Region	
021009	Johnson, Dewayne DOT Manager
Deputy Director	
004542	Schmit, Sheri DOT Manager

SOUTHEAST FREEWAY SECTION 1			
10-22-28-00-00	WAW	100	
002132	Luck, Ryan	DOT Eng Chief	

SOUTHEAST FREEWAY SECTION 2			
10-22-29-00-00	WAW	100	SE Freeways
000842	Gutierrez, Roberto	DOT Eng Chief	

PDS SE Freeway Unit 1			
10-22-28-10-00	WAW	100	Construction
311824	Roselle, Jason	CE Trans Supv	

PDS SE Freeway Unit 6			
10-22-28-40-00	WAW	100	
338578	Lynch, Jason	CE Trans Supv	

PDS SE Freeway Unit 4			
10-22-29-10-00	WAW	100	
005672	Mohr, William	CE Trans Supv	

PDS SE Freeway Unit 5			
10-22-29-20-00	WAW	100	
032496	Elqaq, Wafa	CE Trans Supv	

PDS SE Freeway Unit 7			
10-22-29-40-00	WAW	100	
338579	Gallamore, Joe	CE Trans Supv	

017261	WAW	100	
Jacobson, Paul	CE Trans Adv		
313636	WAW	100	
Burns, Michael	CE Trans Adv		
006453	WAW	100	
Race, Sean	CE Trans Adv		
315528	WAW	100	
Perz, Brian	CE Trans Sr		
Fmr Jacobson '018286	WAW	100	
VACANT	CE Trans Sr		
335827	WAW	100	
Payant, Charles	CE Trans Sr		
315526	WAW	100	
Grasse, Alex	CE Trans Sr		
338674	WAW	100	Traffic
Leranth, Stephanie	CE Trans Sr		
338672	WAW	100	
Schindelholz, Paul	CE Trans		
014753	WAW	100	
Hanson, Eric	CE Trans Sr		
003884	WAW	100	
Schreiber, Ryan	CE Trans		
007690	WAW	100	
Ellis, John	CE Trans		
Fmr Mattson 022720	WAW	100	
VACANT	CE Trans		
015338	WAW	100	
Reeves, Todd	Trans Spec Adv		
003136	WAW	100	
Jurgens, Jeff	Trans Spec Sr		

338633	WAW	100	
Kuhl, Steven	CE Trans Adv		
Fmr Feuling '010089	WAW	100	
VACANT	CE Trans Adv		
006716	WAW	100	Structures
Ciha, Philip	CE Trans Adv		
010692	WAW	100	Geotechnical
Maxwell, Steven	CE Trans Adv		
Fmr Wazniak 333886	WAW	100	Safety
VACANT	CE Trans Adv		
338600	WAW	100	
Harkins, Luke	CE Trans		
Fmr Korsmeyer '008221	WAW	100	
VACANT	CE Trans Sr		
338444	WAW	100	
Wells, Elizabeth	CE Trans Sr		
011684	WAW	100	
Rieger, April	CE Trans Sr		
Fmr Cullen 338447	WAW	100	
VACANT	CE Trans Sr		
022894	WAW	100	
Naughton, Brian	CE Trans Sr		
Fmr Bork '021449	WAW	100	
VACANT	CE Trans Sr		
Fmr Erdmann	WAW	100	
VACANT	CE Trans		
004772	WAW	100	
Peterson, Heidi	Trans Spec		

005381	WAW	100	
Zacharias, Christopher	CE Trans Adv		
318301	WAW	100	
Hager, Christopher	CE Trans Adv		
015168	WAW	100	
LeVeque, Joshua	CE Trans Adv		
301532	WAW	100	
Garcia, Jose Luis	CE Trans Sr		
018286	WAW	100	
Manyen, Wayne	CE Trans		
Fmr Omari	WAW	100	
VACANT	CE Trans Sr		
333855	WAW	100	
Anguiano, Carlos	CE Trans Sr		
000231	WAW	100	
McGillcuddy, Benjamin	CE Trans Sr		
327278	WAW	100	
Lopez, Abraham	CE Trans Sr		
Fmr Larkin '019192	WAW	100	
VACANT	Trans Spec Adv		

029778	WAW	100	
Anderson, Scott	CE Trans Adv		
033881	WAW	100	
Filtz, Dean	CE Trans Adv		
338671	WAW	100	
Parve, Lance	CE Trans Sr		
011019	WAW	100	
Sullivan, Todd	CE Trans Sr		
005935	WAW	100	
Spaeth, Michelle	CE Trans Sr		
007150	WAW	100	
Johansen, Amanda	CE Trans Sr		
318259	WAW	100	
Nygaard, Kristian	CE Trans		
Fmr Wojcik '021046	WAW	100	
VACANT	Trans Spec Adv		
Fmr Kiepczynski	WAW	100	
VACANT-A	CE Trans		

014998	WAW	100	
Pitman, David	CE Trans Adv		
338661	WAW	100	
Vergou-Ornek, Georgia	CE Trans Adv		
320227	WAW	100	
Kiepczynski, Ashley	CE Trans Adv		
020031	WAW	100	
Manandhar, Bhuvan	CE Trans Sr		
023274	WAW	100	
Jelacic, Joseph	CE Trans Sr		
Fmr Filtz	WAW	100	
VACANT-A	CE Trans		
301618	WAW	100	
Limberatos, Evan	CE Trans Sr		
011289	WAW	100	
Rng, Steven	CE Trans Sr		
003967	WAW	100	
Vndedahl, Emma	CE Trans Sr		

2.00	14.00
0.00	

6.00	10.00
0.00	(includes Eng Chief position)

2.00	9.00
0.00	

1.00	9.00
1.00	(includes Eng Chief position)

0.00	9.00
1.00	