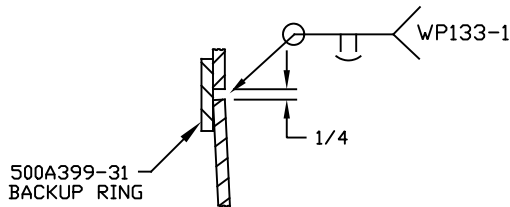
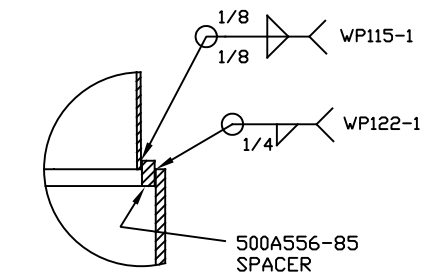
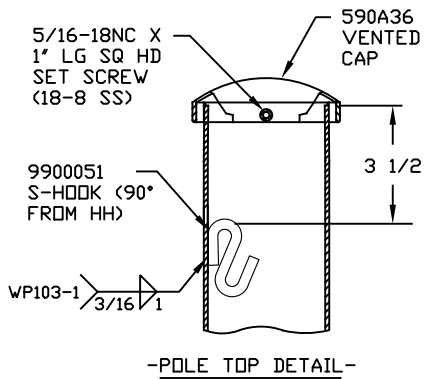
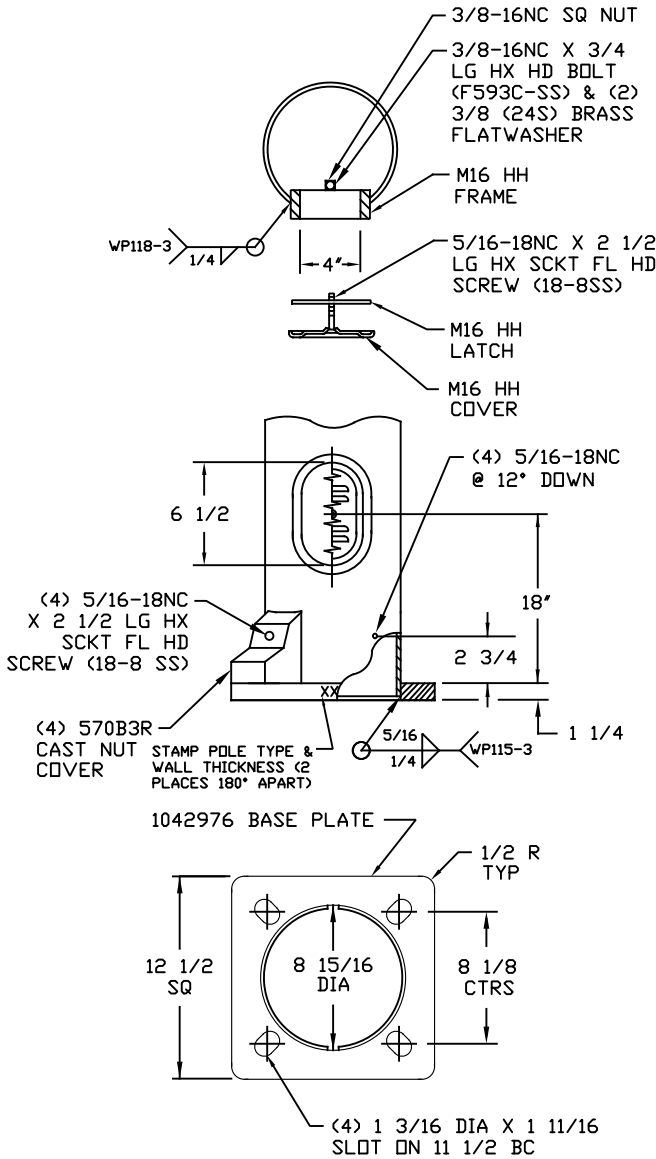
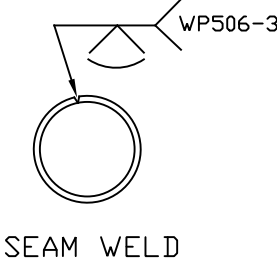
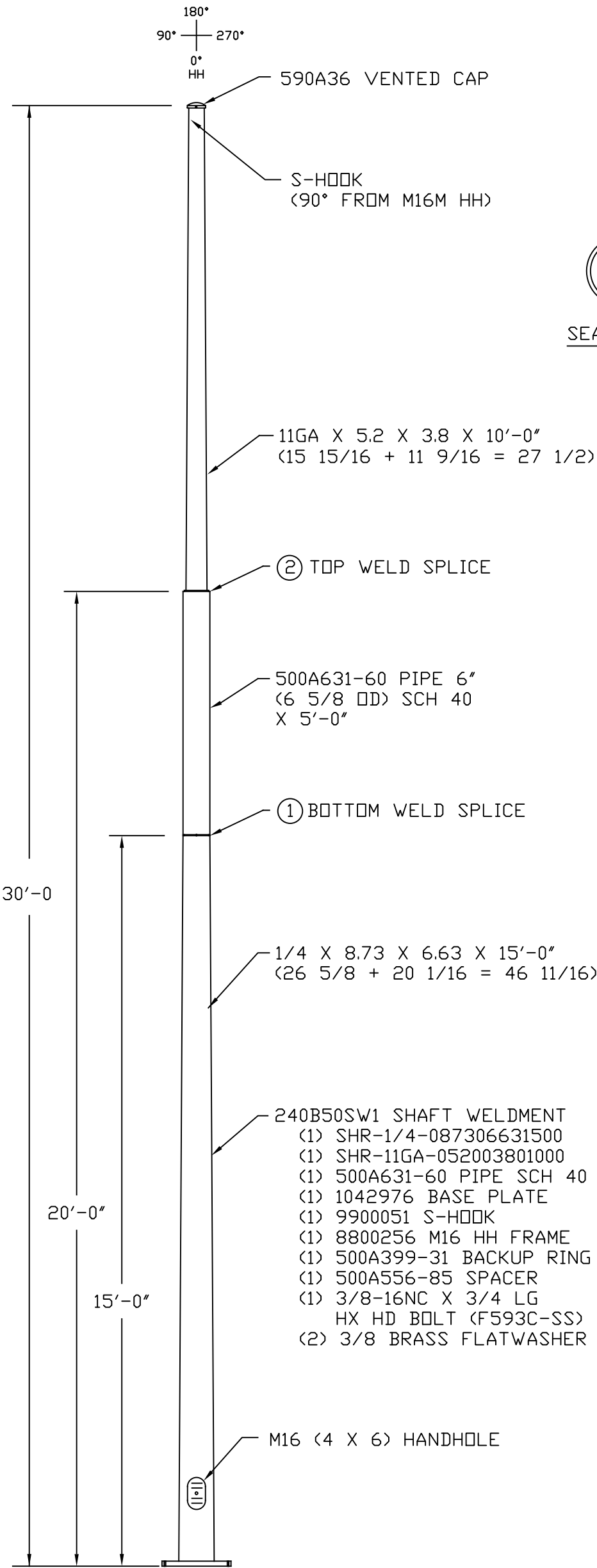


NOTE: Use with only TB1 17 Transformer Base



DETAIL 1 BOTTOM WELD SPLICE

DETAIL 2 TOP WELD SPLICE



POLE BASE AND HANDHOLE DETAIL

- NOTE:
1. SHAFT MATERIAL - HIGH STRENGTH LOW ALLOY STEEL 55,000 PSI MIN YIELD PER ASTM A1011
 2. BASE MATERIAL - HIGH STRENGTH, LOW ALLOY STEEL 36,000 PSI MIN YIELD PER ASTM A36
 3. DO NOT GROUT BETWEEN THE BASE PLATE AND FOUNDATION. AIR MUST BE ALLOWED TO FLOW THROUGH THE POLE TO PREVENT MOISTURE INSIDE THE POLE
 4. THE POLE MEETS PLANS AND WI/DOT SPECIFICATION REQUIREMENTS
 5. THE FOLLOWING PARTS ARE SHIPPED UNASSEMBLED IN HARDWARE BAG 7700059:
 - (1) 9900029 M16 HH COVER
 - (1) 9900030 M16 HH LATCH
 - (5) 5/16-18NC X 2 1/2 LG HX SCKT FL HD SCREW (18-8 SS)
 - (4) 570B3R CAST NUT COVER
 - (1) 590A36 VENTED CAP
 6. FINISH - HOT DIP GALVANIZED PER ASTM A123

240B50-1		3RA8738300-WI
DRAWING REF NO	QTY	PART NO

REV 01-21-20 1042976 WAS 410A90-152
REV 06-04-18 ADDED HARDWARE BAG 7700059
REV 06-28-17 UPDATE HH PART NUMBERS AND S-HOOK.
REV 11-18-09 CET, ADD BASE PLATE STAMP INSTRUCTION, (1) 3/8-16NC X 3/4 LG HX HD BOLT (F593C-SS), AND (2) 3/8 BRASS FLATWASHER
REV 10-6-09 REPLACE 590B11-9 POLE CAP WITH 590A36 VENTED POLE CAP
500A164-145 SUPPORT BAR WITH 500A158-1 S-HOOK, REMV 1/4 SLTTD SCREW AND FLATWASHER

DWN: CET
DATE: 6-30-06
CHK: FLOYD F.
SCALE: NTS

ROUND WI/DOT TYPE 3 POLE	
Millerbernd	MANUFACTURING CO. WINSTED, MN
240B50	