



# Agricultural Roads Improvement Program (ARIP) Informational Webinar

2/28/2024



# Opening Remarks

- WisDOT DTIM Administrator Justin Shell
- Wisconsin Farm Bureau Senior Director of Governmental Relations Tim Fiocchi
- Wisconsin Cheese Makers Association Senior Director Rebekah Sweeney
- Great Lakes Timber Professionals Association Executive Director Henry Schienebeck
- Wisconsin Towns Association Executive Director Mike Koles
- UW-Madison Wisconsin Local Technical Assistance Program Director Andi Bill





# WisDOT DTIM Administrator Justin Shell



# ARIP: Agricultural Road Improvement Program

*Help them help you:*

*Working with local officials to apply for ARIP grants for local roads. ®*

**Tim Fiocchi**

*Senior Director of Government Affairs*

February 28, 2024



*A Voice for Farmers. A Vision for Agriculture. ®*

# What makes a strong application?

- **Priority under the program will be given to projects that provide the greatest benefit to agricultural producers using the following criteria:**
  - It provides the greatest positive economic impact.
  - It provides access to the largest number of farmers or volume of agricultural goods.
  - It will result in the reduction of cost for producers due to repeated trips at reduced weight, labor, fuel, or mileage/wear on agricultural equipment.
  - It is the only feasible way to access a field or facility.
- **Local officials need information from farmers and loggers to complete a competitive application.**

# What do local officials need from farmers?

---

- **Your local officials need to hear from you about which road postings/routes cause issues for your business. You need to make the ask!**
- **Once routes are identified local officials will need economic impact information from farmers about the route.**
- **The user-friendly ARIP Farmer Support Form is available on [wfbf.com](http://wfbf.com) and from other agricultural advocacy organizations to help you give local officials what they need.**

# ARIP Farmer Support Form

The form asks for information about farms and agricultural businesses that local officials will need to fill out the DOT application.

The form is available our website:  
<https://wfbf.com/policy/current-issues/>

## Current Issues in Agriculture

[Home](#) / [Agricultural Policy & Farming Legislation](#) / Current Issues in Agriculture

Stay up-to-date on what bills Wisconsin Farm Bureau is watching on the state and federal level.

### Related resources:

- [Farm Bureau letter to USDA](#) Requesting for Emergency Return to “Higher-of” Class I Mover
- Congressman Van Orden Hosts [2023 Farm Bill Listening Session](#).
- WFBF Hosts AFBF Economist for [Dairy Pricing and Policy Discussion](#).
- WFBF releases its [2023 farm bill priorities](#).
- Analyses of Proposed Alternative Growth Management Programs for the U.S. Dairy Industry [webinar with Chuck Nicholson](#), Associate Professor of Agricultural & Applied Economics at UW-Madison.

## Agricultural Road Improvement Program

### Farmer Support Form

Applications are now available for the Agricultural Road Improvement Program. Farmers and loggers are encouraged to contact their local governments and ask them to submit applications for the first round of grants.

 [Click here to access the farmer support form.](#)

Policy

Agriculture Policy Development

Policy Development Issue Backgrounders

Current Issues in Agriculture

Take Action in Ag Policy Development

Local Affairs

Local Affairs Inquiries

Volunteers for Agriculture®

Volunteers for Agriculture® Candidate Endorsements

iFarmiVote

### Become a member

By being a Wisconsin Farm Bureau member, you qualify for benefits and services that provide a range of options that respond to the needs of farmers, families and businesses in Wisconsin. [Learn more](#)

[Sign Up Today](#)

# ARIP Farmer Support Form

The questions on the form tie directly to the questions local officials have to answer on the DOT application.

The form is fillable so you can type answers or print it and write them in.

For questions like #5, you should check all that apply.

5. Will eliminating the posting of the proposed route reduce your costs for (check all that apply):

- Labor
- Fuel
- Mileage upon and damage to equipment
- Other costs\*

\*Describe the other cost reductions for your operations that would result from the project.

6. If the road posting is resulting in you having to haul partial loads due to the weight limit, how many extra trips would be eliminated per year if the road was no longer posted?

7. Are you required to drive a longer route to go around the posted section of road with equipment or fully loaded trucks?

- Yes
- No

8. Is the posted route the only feasible way for you to access your land or facilities?

- Yes
- No



# ARIP Farmer Support Form

**At the bottom of the form is a small space asking farmers to describe how the project would impact their business.**

**This will be very helpful to both local officials filling out the applications and to the committee reviewing the applications in understanding the potential impact of the project.**

**If you have questions on the form or need help working with your local officials we can help you.**



**Contact with questions:**

**Tim Fiocchi**

**[www.wfbf.com](http://www.wfbf.com)**

**[tfiocchi@wfbf.com](mailto:tfiocchi@wfbf.com)**

**(608) 828-5712**





# ARIP Resources for Dairy Processors



WISCONSIN  
CHEESE MAKERS  
ASSOCIATION

## Wisconsin Agricultural Road Improvement Program Dairy Manufacturer/Processor Application Support Form

Name of Agricultural Producer (Dairy Manufacturer or Processor): \_\_\_\_\_

Phone: \_\_\_\_\_ Email: \_\_\_\_\_

Address: \_\_\_\_\_

Primary Government Sponsor (Municipality): \_\_\_\_\_

Name of Project Application Road, Street, or Highway: \_\_\_\_\_

1. How many full-time onsite employees do you have? [Place an X by the option that best describes your operations.]

- 1-10 \_\_\_\_\_
- 10-20 \_\_\_\_\_
- 20-50 \_\_\_\_\_
- 50-100 \_\_\_\_\_
- 100+ \_\_\_\_\_

2. Please provide your approximate annual gross sales. [Note, a five-year average is preferred.]

\$ \_\_\_\_\_

3. What types of products are produced at your facility? [Place an X by any option that applies.]

- Dairy (Milk) \_\_\_\_\_
- Dairy (Cheese) \_\_\_\_\_

Have questions? Please contact WCMA Senior Director of Programs & Policy Rebekah Sweeney at [rsweeney@wischeesemakers.org](mailto:rsweeney@wischeesemakers.org) or 608-286-1001. Thank you!

Access Support Form at  
[WisCheeseMakers.org](http://WisCheeseMakers.org)



Great Lakes  
**Timber Professionals**  
Association

Agricultural Road  
Improvement Program  
February 28<sup>th</sup>, 2024

Henry Schienebeck  
GLTPA Executive Director



# Ensuring the Future of Wisconsin's Forests



10 TON  
WEIGHT  
LIMIT

Rural road access



**Wisconsin 98 on Six**





At Last!!  
A Funding Mechanism  
That Recognizes the  
Importance of Rural  
Wisconsin's  
Infrastructure.

Thank  
You!

# Wisconsin Towns Association

Executive Director Mike Koles





**WISCONSIN**  
UNIVERSITY OF WISCONSIN-MADISON



# Local Technical Assistance Program Overview

## Wisconsin DOT ARIP Webinar Andi Bill

Transportation Information Center thanks its partners for their support and assistance



# About TIC

- One of 51 Local Technical Assistance Program (LTAP) centers nationwide (one in every state & Puerto Rico).
- Federal Highway Administration created the LTAP program in 1982 to provide local agencies with information and training programs to address the maintenance of local roadways and bridges.
- TIC was founded in 1983

# About TIC

- TIC serves over 1900 units of local government in Wisconsin
  - Counties
  - Cities
  - Villages
  - Towns



# TIC Training

- Training for local street and highway agencies on topics including: Highway Safety, Work Zone and Flagger Safety, PASER Pavement Condition Rating, Pavement Maintenance and Winter Road Maintenance.
- We also offer on-site training (upon request) to local government agency groups in Wisconsin.

<https://interpro.wisc.edu/tic/workshops/>

## TIC Certificate Programs



*Small groups busy at work solving a case study on employee performance.*

Build Your Skills, Advance Your Career  
**Become an Effective  
Public Works Leader**

---



# TIC Certificate Programs

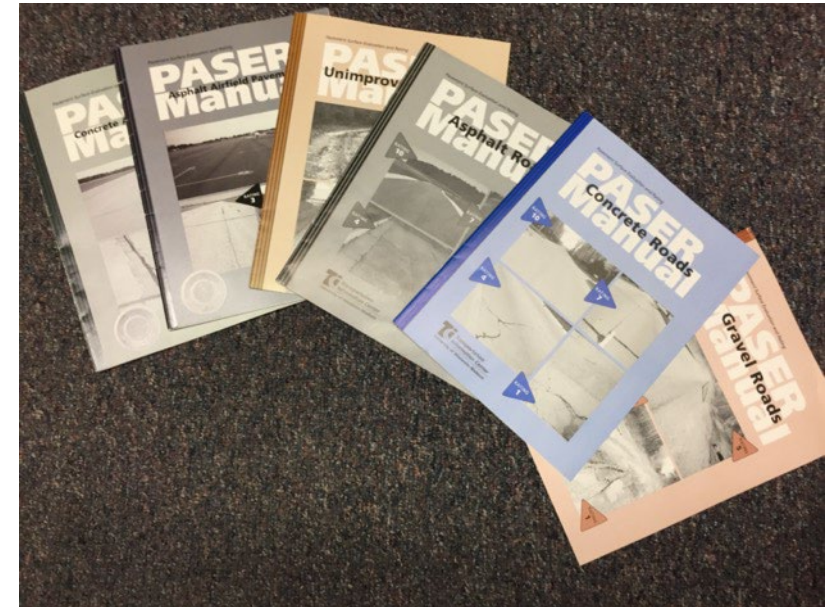
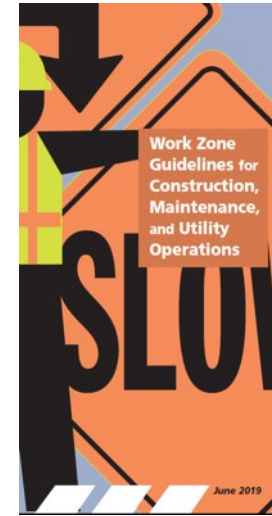
- TIC offers the Public Works Supervisory Academy (PWSA) and Public Works Management Institute (PWMI) certificate programs in cooperation with the Wisconsin Chapter American Public Works Association (APWA)
- PWSA – Nine one-day training courses (54 hours)
- PWMI - Builds on the PWSA with five additional one and two day courses (36 additional hours)
- PWMI is an approved program in the national APWA Institutes Program

<https://interpro.wisc.edu/tic/public-works-certificate/>



# TIC Publications

- Work Zone Guidelines for Construction, Maintenance, & Utility Operations
- Flagger's Handbook
- PASER (Pavement Surface Evaluation & Rating) manuals for Asphalt, Concrete, Sealcoat, Gravel, Brick & Block Pavements and Unimproved Roads
- Wisconsin Transportation Bulletin Series



# PASER & WISLR

A WisDOT & TIC Partnership

Wisconsin Department of Transportation

## Wisconsin Information System for Local Roads

application: [home](#) | [main menu](#) | [route name discrepancy](#) | [log-off](#) | [manual and publications](#) | [On/At training quiz](#)

Select County/Municipality



County  
TREMPEALEAU (61)

Municipality  
BURNSIDE (T) (006)

--OR--

County/Muni Code



Online PASER & WISLR training



<https://wisconsindot.gov/Pages/doing-bus/local-gov/wislr/default.aspx>

WISLR AND PAVEMENT RATINGS HELPLINE: (608) 266-2865







# The WisTransPortal System

The WisTransPortal system serves the computing and data management needs of the [Wisconsin Traffic Operations](#) transportation operations applications, and transportation research. [Learn more.](#)

Home

About

Status

Authors

Contact

Help

## Welcome to the WisTransPortal

### Data Services

WisTransPortal data requests and login account information.

### Data Products

Traffic operations and engineering datasets and related resources.

### Web Applications

WisTransPortal data retrieval and analysis tools, other applications.

### Documentation

Database documentation, project architecture, and other documentati

### WisDOT Traffic Video

LINK video sharing and public safety information service.

### Developer Resources

Resources for TOPS and WisTransPortal system development.

## Quick Links

[Crash Data](#)

[Traffic Data](#)

[Lane Closures](#)

[Traffic Incidents](#)

[Traffic Video](#)

[Storm Report](#)

[511 WRS](#)

<http://transportal.cee.wisc.edu>

[About](#) | [Cor](#)





# The WisTransPortal System

The WisTransPortal system serves the computing and data management needs of the [Wisconsin Traffic Operations and Safety \(TOPS\) Laboratory](#). transportation operations applications, and transportation research. [Learn more](#).

Home > Web Applications

- Home
- Services
- Products
- Applications
- Documents
- Traffic Video
- Resources

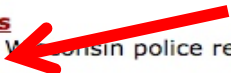
## Web Applications

This page provides access to WisTransPortal systems and data organized by category. Access level restrictions vary by application.

### Safety Data

- [Wisconsin Crash Data Analysis Tools](#)  
Web-based query and analysis tools for Wisconsin police reported crash data and crash reports.
- [Community Maps - TSC Crash Mapping](#)  
Online crash map populated by county TSCs and local agencies. Based on Google Maps API.

Crash Data



### Work Zones

- [WisLCS Wisconsin Lane Closure System](#)  
WisDOT lane and ramp closure request and acceptance system.
- [WisTMP Wisconsin TMP System](#)  
WisDOT Transportation Management Plan (TMP) routing and approval system.

### Operations / Dispatch

- [TIA Traffic Incident Alert System](#)  
WSP / TMC traffic incident email alerts and media releases.
- [511 WRS Winter Roads System](#)  
WSP / TMC 511 winter road conditions reporting system.
- [InterCAD Traffic Incident Database](#)  
Web-based query and retrieval facility for archived InterCAD traffic incident data.

### Winter Maintenance

- [Winter Storm Report System](#)  
County maintenance Winter Storm Report submission system.

### Traffic Data

- [V-SPOC Traffic Detector Database](#)  
Web-based query and retrieval facility for WisDOT ATMS and TRADAS traffic detector data.
- [Wisconsin Hourly Traffic Data Portal](#)  
Wisconsin hourly and directional traffic volume data. Compiled from the WisDOT DTIM TRADAS database.
- [Wisconsin 511 Travel Times Database](#)  
Web-based query and retrieval facility for archived Wisconsin 511 travel time data.



# Technical Assistance

- TIC provides answers to technical question dealing with street and highway issues.
- We can either provide assistance or refer you to other resources that can help.
- Most technical assistance is provided by phone or email.

# ARIP Applicant Support

- Reach out for:
  - Project Review
  - Project Cost Estimation Tools
    - WisDOT (<https://wisconsindot.gov/Pages/doing-bus/eng-consultants/cnslt-rsrcs/tools/estimating/est-tools.aspx>)
      - Project Cost Estimating Spreadsheet: <https://wisconsindot.gov/Documents/doing-bus/eng-consultants/cnslt-rsrcs/tools/estimating/cost-estimating-template.xlsx>
  - Bulletins
  - Proposal Review

# TIC Partnerships

- TIC Works cooperatively partners including:
  - Wisconsin County Highway Association
  - The Wisconsin Towns Association
  - The League of Wisconsin Municipalities
  - Wisconsin Chapter American Public Works Association
  - Institute of Transportation Engineers Wisconsinand many others to deliver additional training at events sponsored or hosted by partners





**WISCONSIN**  
UNIVERSITY OF WISCONSIN-MADISON



432 N. Lake Street

Madison, Wisconsin 53706

Toll Free: (800) 442-4615

[tic@epd.wisc.edu](mailto:tic@epd.wisc.edu)

<https://interpro.wisc.edu/tic/>

Andi Bill  
(608) 890-3425  
[bill@wisc.edu](mailto:bill@wisc.edu)

Transportation Information Center thanks its partners for their support and assistance





**WISCONSIN**  
UNIVERSITY OF WISCONSIN-MADISON



**Thank you!**

Transportation Information Center thanks its partners for their support and assistance



# Today's WisDOT Presenters

- WisDOT Interim ARIP Program Manager Megan Feeley
- WisDOT Local Programs and Finance Section Chief Merrill Mechler-Hickson



# Upcoming ARIP Solicitation Deadline

- Agricultural Roads Improvement Program (ARIP)
  - Deadline for first \$50 million solicitation: **April 5, 2024 at 5:00 p.m.**



# ARIP Solicitations

- First Round (February 6, 2024)
  - \$50 million funding distribution amount
  - Deadline: April 5, 2024 at 5:00 p.m.
- Second Round (mid-late 2024)
  - \$100 million funding distribution amount
- Note: Limit 2 applications per sponsor per cycle
  - Unawarded applications from Round 1 can be rolled forward to Round 2



# Program Timeline

Schedule	Program Activity
July 2023	State of Wisconsin 2023-2025 biennial budget is approved. WisDOT receives the first biennial year's funds.
February 6, 2024	First ARIP application cycle opens (\$50 million funding distribution amount).
April 5, 2024	Deadline to submit an application for the first ARIP project solicitation.
April 2024	ARIP Selection Committee is established.
April/May 2024	ARIP Selection Committee reviews applications for the first ARIP program cycle and submits award recommendations to WisDOT secretary for final approval.
July 2024 (tentative)	WisDOT Secretary awards projects for the first ARIP application cycle.



# Local Assistance Programs Webpage

<https://wisconsindot.gov/Pages/doing-bus/local-gov/astnce-pgms>

## Local assistance programs

### Assistance programs

[Bipartisan Infrastructure Law funding](#)

[Road and bridge](#)

[Transit](#)

[Other aid](#)

### Road and bridge assistance programs

These programs assist local governments with needed improvements to local roads, highways and bridges.

### Transit assistance programs

Transit programs can assist local governments and transit systems with operating and/or capital expenses to support public transportation services, such as buses, vans and shared-ride taxi systems.

### Other aid

These programs provide financial assistance to local governments, along with other public and private entities, to make a variety of improvements to highways, airports, harbors, bike, rail and pedestrian facilities.

### Related information:

- [2023 WisDOT Statewide Local Program Symposium](#)
- [Wisconsin Information System for Local Roads \(WISLR\)](#)
- [Bipartisan Infrastructure Law \(BIL\) - Previous Solicitations](#)



# ARIP Webpage

<https://wisconsindot.gov/Pages/doing-bus/local-gov/astnce-pgms/highway/arip.aspx>



State of Wisconsin  
**Department of Transportation**



[DMV Online Services](#) ▾ [DMV Info](#) ▾ [Doing Business](#) ▾ [Travel](#) ▾ [Safety](#) ▾ [Projects and Studies](#) ▾ [About WisDOT](#) ▾



## Agricultural Roads Improvement Program (ARIP)

### Assistance programs

[Bipartisan Infrastructure Law funding](#)

[Road and bridge](#)

[Transit](#)

[Other aid](#)

In June 2023, [Senate Bill 247 \(Act 13\)](#) established the Agricultural Roads Improvement Program (ARIP) as part of the 2023-2025 biennium budget to improve highways functionally classified as local roads, or minor collectors, or culverts, that provide access to agricultural lands or facilities used to produce agricultural goods, including forest products.

Created within the framework of the existing [Local Roads Improvement Program \(LRIP\)](#), ARIP provides a one-time segregated revenue (SEG) funding of \$150 million to enhance rural roads, bridges, and culverts in Wisconsin's rural communities.

### Project Eligibility

An eligible project must meet all the following requirements:

1. The project is to improve a highway functionally classified by the department as a local road or minor collector or a bridge or culvert on a highway functionally classified by the department as a local road or minor collector. See the [ARIP Potentially Eligible Roads map application](#) to assist with identifying potentially eligible roads for this program. Please note, this map only highlights roads that are functionally classified as local roads or minor collectors. It does not include information about Class-B or otherwise weight-restricted roadways, or factor in other ARIP eligibility information such as usage by agricultural or forestry producers or posted load restrictions. It is the applicant's responsibility to confirm the other program eligibility criteria as laid





# Agricultural Roads Improvement Program (ARIP)– General Overview

The Agricultural Roads Improvement Program (ARIP) is a one-time SEG funded grant appropriation in the 2023-2025 biennium.

- \$150 million to reimburse local governments to improve deteriorating Class B and weight-restricted roads that restrict the ability of farming to move full truckloads of goods.
- ARIP may be funded at up to a 90% state cost share.
- From the date of legislation, program must award within 3 years and reimburse within 5 years.



# ARIP Eligibility

An ARIP project must meet all of the following criteria to be eligible:

1. The project is to improve a highway functionally classified by the department as a local road or minor collector or a bridge or culvert on a highway functionally classified by the department as a local road or minor collector.
2. If the project is solely for the improvement of a bridge or culvert, the bridge or culvert is 20 feet or less in length and is not eligible for funding under a federal program providing funding for bridge improvements
3. The highway, bridge, or culvert provides access to agricultural lands or facilities used for the production of agricultural goods, including forest products, and is used by at least one agricultural producer.
4. The highway or the highway upon which the bridge or culvert is located is designated as a class "B" highway under s. 349.15 due to structural deficiencies or has been subject to a posted weight limitation for at least one month during the previous year.
5. After completion of the project, the highway will not be designated as a class "B" highway under s. 349.15 and will not be subject to a posted weight limitation other than under extraordinary or emergency circumstances.
6. The highway, bridge, or culvert is maintained by a political subdivision.



# Roadway Functional Classification: ARIP Eligibility

Roadway Functional Classifications		
Arterial	Principal	Interstate
		Expressway
		Other Principal
	Minor Arterial	
Collector	Major Collector	
	Minor Collector	
Local Roads		

} Potentially ARIP Eligible

Visit [Wisconsindot.gov](https://wisconsindot.gov) – <https://wisconsindot.gov/Pages/projects/data-plan/plan-res/function.aspx>





# Application Materials

- ARIP Guidelines & Instructions documents
- Potentially Eligible Roads map application
- AccessGov application

## Access ARIP Application

- [How to Register for AccessGov](#)
- [Open application \(AccessGov\)](#)
- See the [ARIP Potentially Eligible Roads map application](#) to assist with identifying potentially eligible roads for this program. Please note, this map only highlights roads that are functionally classified as local roads or minor collectors. It does not include information about Class-B or otherwise weight-restricted roadways, or factor in other ARIP eligibility information such as usage by agricultural or forestry producers or posted load restrictions. It is the applicant's responsibility to confirm the other program eligibility criteria as laid out in Wis. Stat. 86.31 (3o) prior to submitting an application.

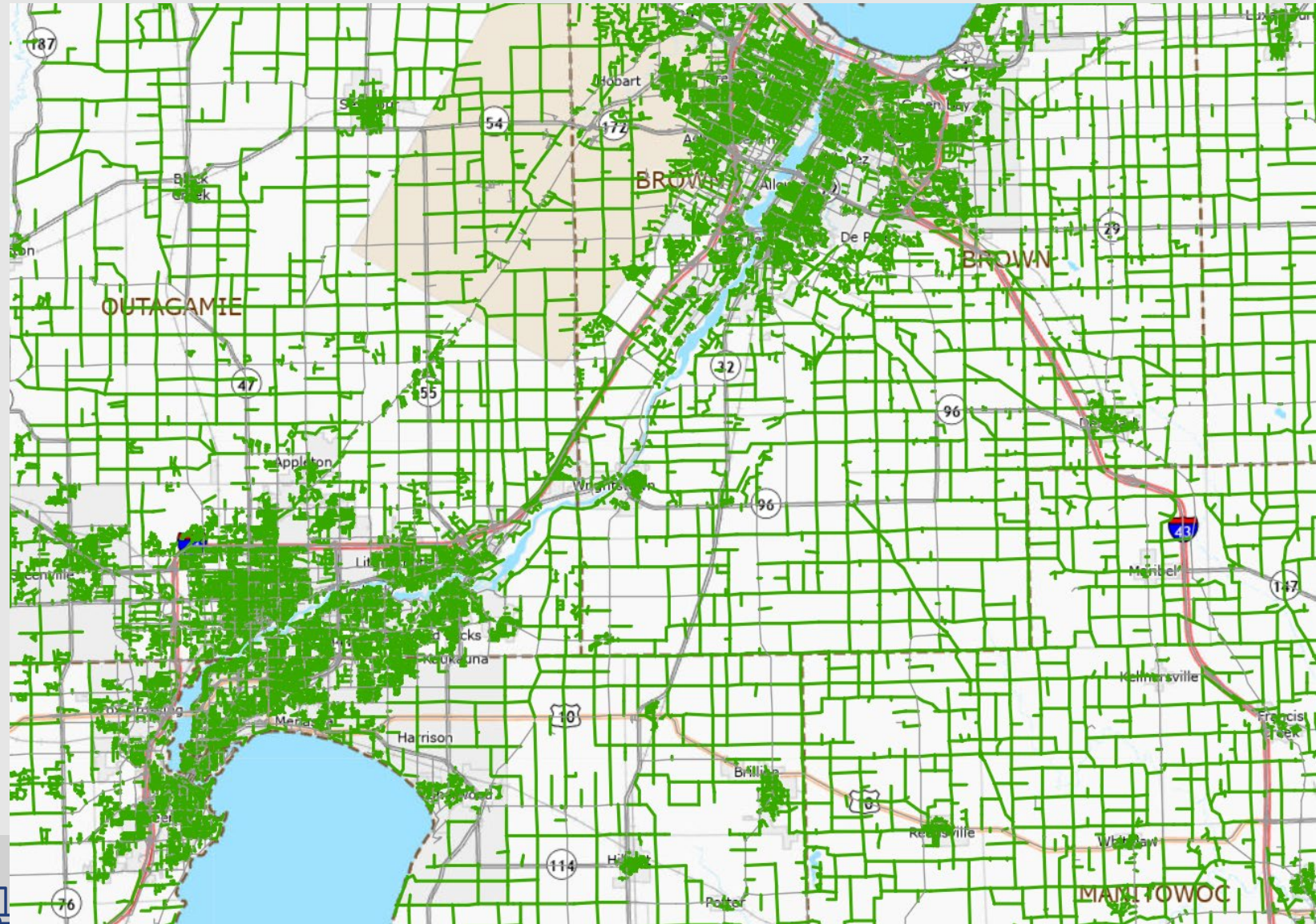
## Program Documents

- [ARIP Application Instructions Manual](#) (Updated February 8, 2024) 
- [ARIP Application Guidelines and Requirements](#) (Updated February 8, 2024) 



# ARIP Potentially Eligible Roads Map Application

- Displays roadways functionally classified as minor collectors or local roads
  - Does NOT display weight restricted roads




# How to: Create an AccessGov Login

[Log in](#) to store your form.

## 2024-2025 Agricultural Road Improvement Program (ARIP) Application

ACCESSGOV



**Public User**

Wisconsin State Employee  
NIC Employee

MyWisconsin ID Sign In

Email address  
example - user@domain.com

**!** This field cannot be left blank

**Next**

[Unlock account?](#)  
[Help](#)

Don't have an account? [Sign up](#)

Sign up

First name  
Megan

Last name  
Feeley

Email  
megan.feeley1@dot.wi.gov

**Sign Up**

[Already have an account?](#)



# How to: Create an AccessGov Login (Part 2)

## Set up security methods

Security methods help protect your account by ensuring only you have access.

### Set up required



#### Email

Verify with a link or code sent to your email  
Used for recovery

[Set up](#)



#### Password

Choose a password for your account  
Used for access

[Set up](#)



## Verify with your email

We sent an email to  Click the verification link in your email to continue or enter the code below.

[Enter a verification code instead](#)

[Return to authenticator list](#)

[Back to sign in](#)

### Set up required



#### Google Authenticator

Enter a temporary code generated from the Google Authenticator app.  
Used for access

[Set up](#)



#### Okta Verify

Okta Verify is an authenticator app, installed on your phone, used to prove your identity  
Used for access or recovery

[Set up](#)



#### Phone

Verify with a code sent to your phone  
Used for access

[Set up](#)



#### Security Key or Biometric Authenticator

Use a security key or a biometric authenticator to sign in  
Used for access

[Set up](#)



# AccessGov: General Project Information


## PROJECT AND SPONSOR: GENERAL INFORMATION

Primary Sponsor  
Municipality Type \*

- City
- Village
- Town
- County

Primary Sponsor Name \*

Is there a secondary sponsor involved with this project? \*

- Yes 
- No

Primary Sponsor Contact Information \*

Address Line 1

Address Line 2

City

+ Add

Email \*

email@example.com

Primary Phone \*

(999) 999-9999

Secondary Phone

(999) 999-9999

Secondary Sponsor  
Municipality type \*

- City
- Village
- Town
- County

Secondary Sponsor Name \*

Secondary Sponsor Contact Information \*

Address Line 1

Address Line 2

City

Zip

Email \*

email@example.com

Primary Phone Number \*

(999) 999-9999



# General Project Information

## Project Location

**On Route** ⓘ **At Route - Beginning Point** ⓘ \* **Toward Route - Ending Point** ⓘ **County of Project Location** ⓘ \*

Upload a map indicating the project location. \*

No file chosen

If possible, provide a file with pictures of the project area, focusing on the condition of the road. If uploading multiple pictures, include them all within a single document. ⓘ

No file chosen

**Does this project include a bridge?** ⓘ \*

- Yes  
 No

**Does this project include a culvert?** ⓘ \*

- Yes  
 No

**Project Description** ⓘ \*

**County where bridge is located** \* ✕

-- Select an option --

**Structure ID** \*

-- Select an option --

**Does the culvert have a Structure ID?** ⓘ \*

- Yes  
 No  
 Unknown

**County where culvert is located** \* ✕

-- Select an option --

**Structure ID** \*

-- Select an option --

# AccessGov Application: Project Cost

ESTIMATED PROJECT COST	
Planning and design costs	Planning and design costs
<input type="text" value="\$"/>	\$0.00
Right-of-way acquisition costs	Right of way acquisition costs
<input type="text" value="\$"/>	\$0.00
Engineering costs	Engineering costs
<input type="text" value="\$"/>	\$0.00
Construction costs *	Construction costs
<input type="text" value="\$"/>	\$0.00
<p><i>ⓘ Estimated project cost must be greater than \$0.00, and all projects must include a construction element.</i></p>	
Total estimated cost	
\$0.00	



# AccessGov Application: Eligibility

## ELIGIBILITY INFORMATION

Road Functional Classification. Select all that apply. ⓘ \*

- Local Road
- Minor Collector

Does the project area provide access to agricultural or forestry lands or facilities used for the production of agricultural or forestry goods used by at least one (1) producer? \*

- Yes
- No

Indicate the type of weight restriction that the project area is affected by. Select all that apply. \*

- Class "B" weight restriction
- Seasonal weight restriction
- Special weight restriction
- No weight restriction

After completion of the project, the project area will not be designated as a class "B" highway under s. 349.15 and will not be subject to a posted weight limitation other than under extraordinary or emergency circumstances or with an engineer's certification.. \*

- True
- False



# AccessGov Application: Economic Assessment pt. 1

**ECONOMIC ASSESSMENT**

Estimated number of agricultural and/or forestry producers that use this route \*

| Select an option --

-- Select an option --

1 ←

2

3

4

5+

List the local agricultural or forestry producers that contributed to this assessment and will be impacted by this project (as indicated in above questions):

Producer *	Contact Name *	Phone *	Email *
<input type="text"/>	<input type="text"/>	<input type="text" value="(999) 999-9999"/>	<input type="text"/>
<input type="text"/>	<input type="text"/>	<input type="text" value="(999) 999-9999"/>	<input type="text"/>



# AccessGov Application: Economic Assessment

Estimated total number of full time onsite employees currently employed by all producers that are affected by route weight restrictions \*

| - Select an option --

- Select an option --
- 1-25 employees
- 26-100 employees
- 101-250 employees
- 250+ employees

Total estimated annual value of agricultural or forestry product sales that would be directly affected by the project. (Please use 5 year average annual sales, if available) \*

Total Estimated Sales  
\$0.00

\$

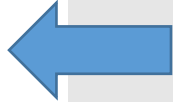


# AccessGov Application: Economic Assessment

Fill out the following questions for each affected producer.

Select the category that most accurately reflects the type of product being produced at the facility. \* X

-- Select an option --



+ Add

- Select an option --
- Animal Products
- Dairy (Cheese)
- Dairy (Milk)
- Forestry Products
- Fruit and Vegetable Crops
- Grain Crops
- Other



Select the category that most accurately reflects the type of product being produced at the facility. \* X

Animal Products

Estimated total volume of product transported annually via this route (in lbs). \*



# AccessGov Application: Economic Assessment

Will the completion of this project result in the reduction of any of the following costs? Select all that apply.

\*

- Labor costs
- Fuel costs
- Mileage upon and damage to equipment
- Other costs

One of the goals of this program is to reduce repeated trips at reduced weights due to a posted weight limit. Approximately how many repeated trips at reduced weights can be eliminated as a result of the project's completion? \*

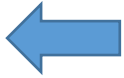


# AccessGov Application: Economic Assessment

## Cost Reduction Narrative

Provide a narrative outlining the impact of the completion of this project based on the cost reduction points outlined above. You can choose between a fill-in text box or a Word doc. upload. \*

- Text box
- Document upload



For any producer, does the current route deviate from the most efficient route due to weight restricted roads? \*

- Yes
- No



For all producers, how much further is it necessary to travel on the inefficient route due to a posted weight restriction? Provide an estimate of the average length of the deviation in miles. \*

Provide a summary of the impact to producers with regard to cost reduction as a result of project completion. \*

Provide an account of the impact to producers with regard to cost reduction as a result of project completion. \*

Choose File No file chosen





# AccessGov Application: Economic Assessment

Is the project area the only feasible access to the production lands or facilities? \*

- Yes
- No

Does the local government filing this application have dedicated administrative or transportation staff for the delivery of this project? ⓘ \*

- Yes
- No

## CERTIFICATION

Are you an authorized representative for the project sponsor? \*

I certify that I am an authorized representative for the project sponsor and that all information contained in this application is truthful and accurate to the best of my knowledge.

Signature (Type your name) \*

Date Signed \*



# Program Selection Model

Projects will be selected by a competitive discretionary committee made up of local government officials and members of the agricultural/timber industry using the following criteria as outlined in the statute:

1. A project that improves access by the largest number of agricultural producers to agricultural lands and facilities used to produce agricultural goods.
2. A project that will result in the greatest positive economic impact.
3. A highway, bridge, or culvert that provides the only feasible access to agricultural lands used to produce agricultural goods.
4. An application by a local government that faces demonstrable fiscal or administrative difficulties in completing highway projects.
5. A project that will result in the reduction of trips, costs, and mileage driven (for example) for agricultural producers.
6. A project that will result in the transportation of the largest amount of agricultural goods.
7. ARIP Selection Committee Discretionary Rating based on a wholistic review of provided materials, including the project narrative section



# Example ARIP Funding Scenarios

## • Scenario 1

- Project Estimate: \$100
- Project Award: \$90
- Project Let: \$100
- 90/10 split (state/muni)
- Sponsor is responsible for paying \$10

## • Scenario 2

- Project Estimate: \$100
- Project Award: \$90
- Project Let: \$90
- 90/10 split (state/muni)
- New award amount: \$81
- Sponsor is responsible for paying \$9

## • Scenario 3

- Project Estimate: \$100
- Project Award: \$90
- Project Let: \$200
- 90/10 split (state/muni)
- Sponsor is responsible for paying the difference (\$100) plus \$10



# ARIP Eligible Project Types

- Pavement Replacement
- Reconstruction
- Structure Rehabilitation

For more information about project types and eligible/ineligible costs, see the ARIP Guidelines and Requirements document on our website:

<https://wisconsindot.gov/Documents/doing-bus/local-gov/astnce-pgms/highway/arip-guidelines.pdf>

Completed projects must remove all load postings (except in emergency circumstances) and have a ten-year lifespan

# ARIP Eligible and Ineligible Costs

- Eligible
  - Feasibility studies, design, engineering, grading, base, paving, right-of-way acquisition or other related engineering costs
- Ineligible
  - Project advertising, utility costs, costs incurred prior to signing the SMA
  - Other repairs made to the roads that will not result in the removal of weight restrictions





# Grant Writing Tips, Tricks, and Traps



# WisDOT Grant Applications: Tips for Successful Applications

- *Actions to take before the application process:*
- 1. Decide on the parameters of your project
  - Clearly define project need
  - Clearly define project scope
- 2. Conduct stakeholder outreach
  - Engage interest in your community
  - Obtain letters of support



# WisDOT Grant Applications: Tips for Successful Applications

- *Actions to take during the application process:*
- 1. Complete all sections of application materials
  - Map/location of project area
  - Breakdown of eligible costs
  - Photos
- 2. Review application materials for errors
- 3. Tell a story
  - ‘Sell’ your project
  - Engage the reviewer
- 4. Submit materials by the application deadline



# WisDOT Grant Applications: Tips for Successful Applications

- *Actions to take after the application is submitted:*
- 1. Be Proactive
  - Confirm receipt of application materials
  - Inform WisDOT of any changes
- 2. Be Patient
  - Ask when project awards are likely to be announced
  - Do not start work on your project prior to authorization
- 3. Be Persistent
  - Not all applicants are successful the first time
  - Improve your application for future submissions





# WisDOT Local Program Contacts

Merrill Mechler-Hickson  
Program and Policy Chief  
(608) 261-8977  
[merrill.mechlerhickson@dot.wi.gov](mailto:merrill.mechlerhickson@dot.wi.gov)

Tim Olusegun  
Program and Policy Supervisor  
(608) 266-0254  
[tim.olusegun@dot.wi.gov](mailto:tim.olusegun@dot.wi.gov)

Jen Murray  
BTLRRH Director  
(608) 264-8722  
[jennifer.murray@dot.wi.gov](mailto:jennifer.murray@dot.wi.gov)

Megan Feeley  
Interim ARIP Program Manager  
608-267-7261  
[megan.feeley1@dot.wi.gov](mailto:megan.feeley1@dot.wi.gov)



# Questions?



# Frequently Asked Questions

- Can I apply to ARIP and another program (LRIP, STP) with the same project?
- Can I apply to ARIP in the second solicitation if I already applied (but was not awarded) in the first solicitation?
- What qualifies as an agricultural or forestry producer?
- Are gravel road projects eligible for ARIP?



# Thank you!

