

Classified Equipment Pictures



Class 101
Trucks
Rear drive or 4wd, 15,000 lbs and less



Class 103
Trucks
Rear drive or 4wd, 15,001 through 17,999 lbs



Class 104
Trucks
Rear drive or 4wd, 18,000 through 22,999 lbs



Class 106
Trucks
Rear drive or 4wd, 23,000 lbs through 49,999 lbs



Class 112

Trucks

Rear drive, 4wd or 6wd, more than 50,000 lbs



Class 112

Trucks

Rear drive, 4wd or 6wd, more than 50,000 lbs



Class 114

Vehicles

Automobiles



Class 117

Trucks

Tandem rear drive through 49,999 lbs



Class 118
Trucks
Tandem rear drive, 50,000 lbs and over



Class 119
Vehicles
Vans and SUV's



Class 202
Tractors/Skid Steers/End Loaders/Dozers
Wheel-type, 12 through 34 hp



Class 203
Tractors/Skid Steers/End Loaders/Dozers
Wheel-type 35 through 49 hp



Class 204
Tractors/Skid Steers/End Loaders/Dozers
Wheel-type, 50 through 64 hp



Class 205
Tractors/Skid Steers/End Loaders/Dozers
Wheel-type, 65 through 79 hp



Class 206
Tractors/Skid Steers/End Loaders/Dozers
Wheel-type, 80 through 99 hp



Class 207
Tractors/Skid Steers/End Loaders/Dozers
Wheel-type, 100 through 149 hp



Class 208

Tractors/Skid Steers/End Loaders/Dozers
Wheel-type, 150 through 214 hp



Class 209

Tractors/Skid Steers/End Loaders/Dozers
Wheel-type, 215 hp and more



Class 215

Tractors/Skid Steers/End Loaders/Dozers
Track-type dozer, through 79 hp



Class 216

Tractors/Skid Steers/End Loaders/Dozers
Track-type dozer, 80 through 99 hp



Class 217
Tractors/Skid Steers/End Loaders/Dozers
Track-type dozer, 100 through 149 hp



Class 218
Tractors/Skid Steers/End Loaders/Dozers
Track-type dozer, 150 through 214 hp



Class 219
Tractors/Skid Steers/End Loaders/Dozers
Track-type dozer, 215 hp and more



Class 221
Tractors/Skid Steers/End Loaders/Dozers
Agricultural type tractor/skid steer, 4-wheel drive units, 20 through 64 hp



Class 221

Tractors/Skid Steers/End Loaders/Dozers
Agricultural type tractor/skid steer, 4-wheel drive
units, 20 through 64 hp



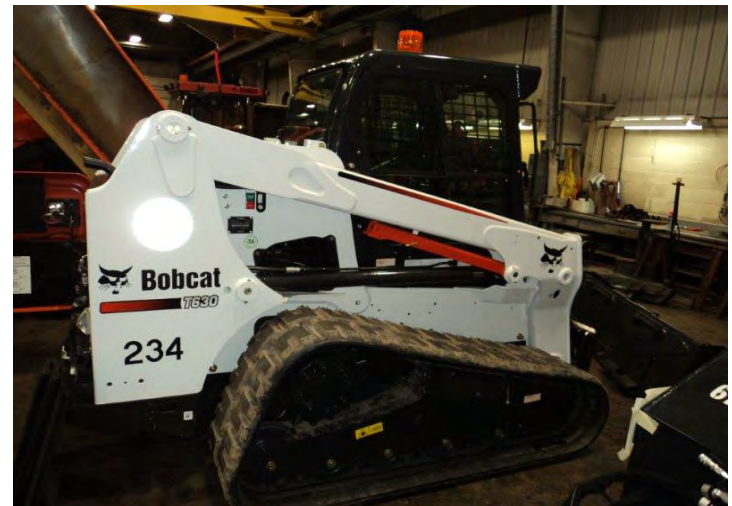
Class 221

Tractors/Skid Steers/End Loaders/Dozers
Agricultural type tractor/skid steer, 4-wheel drive
units, 20 through 64 hp



Class 222

Tractors/Skid Steers/End Loaders/Dozers
Agricultural type tractor/skid steer, 4-wheel drive
units, 65 through 79 hp



Class 222

Tractors/Skid Steers/End Loaders/Dozers
Agricultural type tractor/skid steer, 4-wheel drive
units, 65 through 79 hp



Class 222

Tractors/Skid Steers/End Loaders/Dozers
Agricultural type tractor/skid steer, 4-wheel drive units, 65 through 79 hp



Class 223

Tractors/Skid Steers/End Loaders/Dozers
Agricultural type tractor/skid steer, 4-wheel drive units, 80 through 99 hp



Class 223

Tractors/Skid Steers/End Loaders/Dozers
Agricultural type tractor/skid steer, 4-wheel drive units, 80 through 99 hp



Class 223

Tractors/Skid Steers/End Loaders/Dozers
Agricultural type tractor/skid steer, 4-wheel drive units, 80 through 99 hp



Class 224

Tractors/Skid Steers/End Loaders/Dozers

**Agricultural type tractor/skid steer, 4-wheel drive units,
100 up to 175 hp**



Class 250

Tractors/Skid Steers/End Loaders/Dozers
Backhoe/loader/tractor, (80 hp and over)



Class 302

Graders, Motor

Rear drive grader, less than 85 hp



Class 305

Graders, Motor

Rear drive grader, 85 hp through 149 hp



Class 307
Graders, Motor
Rear drive grader, 150 hp and greater



Class 308
Graders, Motor
All wheel drive grader, any hp



Class 315
Graders, Motor
Non-integrated, Slope control, used in grader



Class 323
Graders, Tow Type Attachment
Any number of blades



Class 323
Graders, Tow Type Attachment
Any number of blades



Class 392
Maintainer Attachments
Hydraulically operated return blade



Class 402
Air Compressors
125 through 209 CFM



Class 403
Air Compressors
210 CFM and over



Class 410
Mowers and Mower Attachments
Motorized lawnmower, less than 60" cut



Class 411
Mowers and Mower Attachments
Motorized lawnmower, 60" cut or more



Class 412
Mowers and Mower Attachments
Disc bine attachment



Class 413
Mowers and Mower Attachments
Single pan section, rotary or flail attachment



Class 414
Mowers and Mower Attachments
Sickle bar attachment



Class 415
Mowers and Mower Attachments
2 pan section (single unit), rotary or flail attachment



Class 416
Mowers and Mower Attachments
3 pan section (single unit), rotary or flail attachment



Class 420
Spreader Attachments
Spreader, tailgate mounted, computer controlled with on board pre-wetting system (may include anti-icing spray bar)



Class 421

Spreader Attachments

Spreader, hopper type truck body with conveyor feeding material to power driven spinner type spreader, computerized, with on board pre-wetting system (may include anti-icing spray bar)



Class 422

Spreader Attachments

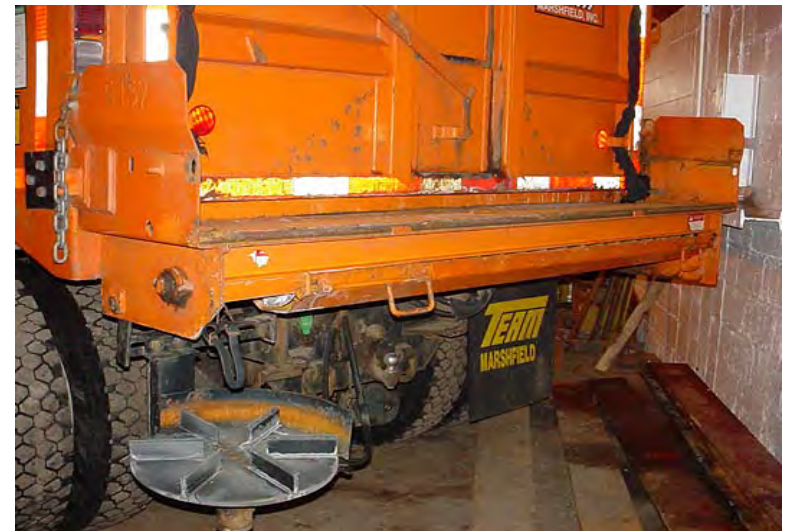
Hopper type truck body with conveyor feeding material to power driven spinner type spreader, non-computerized, with on board pre-wetting system



Class 423

Spreader Attachments

Spreader, tailgate mounted, non-computerized, with on board pre-wetting system



Class 424

Spreader Attachments

Tailgate mounted, non-computerized



Class 425

Spreader Attachments

Hopper type truck body with conveyor feeding material to power driven spinner type spreader, non-computerized (without pre-wetting system)



Class 426

Class 426

Spreader Attachments

Tailgate mounted, computer controlled (without pre-wetting system)



Class 427

Spreader Attachments

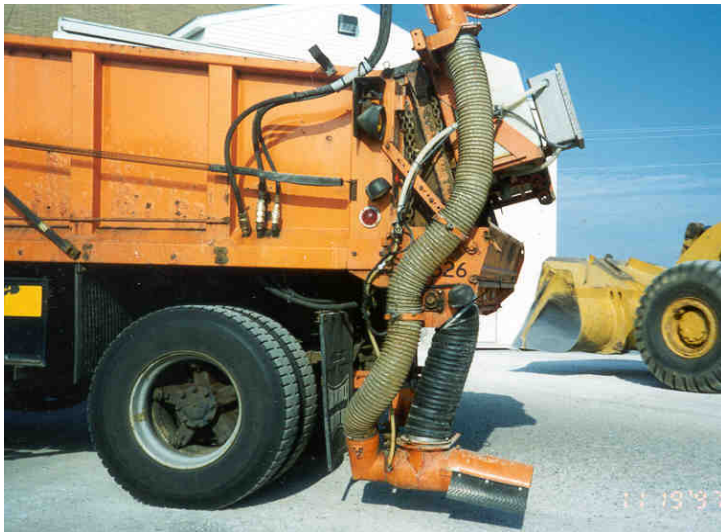
Hopper type truck body with conveyor feeding material to power driven spinner type spreader, computerize (without pre-wetting system)



Class 427

Spreader Attachments

Hopper type truck body with conveyor feeding material to power driven spinner type spreader, computerize (without pre-wetting system)



Class 428

Spreader Attachments

Zero-velocity type spreader, includes 'pre-wetting' type system (may include anti-icing spray bar)



Class 432

Sweepers and Attachments

Broom, self-powered, pulled by separate vehicle



Class 431

Sweepers and Attachments

Broom, power take-off or hydraulic pump driven, attached to separate vehicle class



Class 433

Sweepers and Attachments

Street sweeper, mechanical debris collection system, self-propelled



Class 434
Sweepers and Attachments
Broom, self powered, self-propelled



Class 435
Sweepers and Attachments
Vacuum debris collection system, with or without
sweeper, self-propelled



Class 435
Sweepers and Attachments
Vacuum debris collection system, with or without
sweeper, self-propelled



Class 440
Spreaders, Self-propelled Chip
Single width with mechanical extension



Class 450
Shouldering Machines
Shoulder reclaimer



Class 450
Shouldering Machines
Shoulder reclaimer



Class 451
Shouldering Machines
Shoulder machine attachment



Class 455
Shouldering Machines
Self-propelled (road widener)



Class 490

Trailers

Less than 1 ton (use manufacture's rates capacity)



Class 491

Trailers

1 through 4 tons (use manufacture's rated capacity)



Class 493

Trailers

5 through 29 tons (use manufacture's rated capacity)



Class 496

Trailers

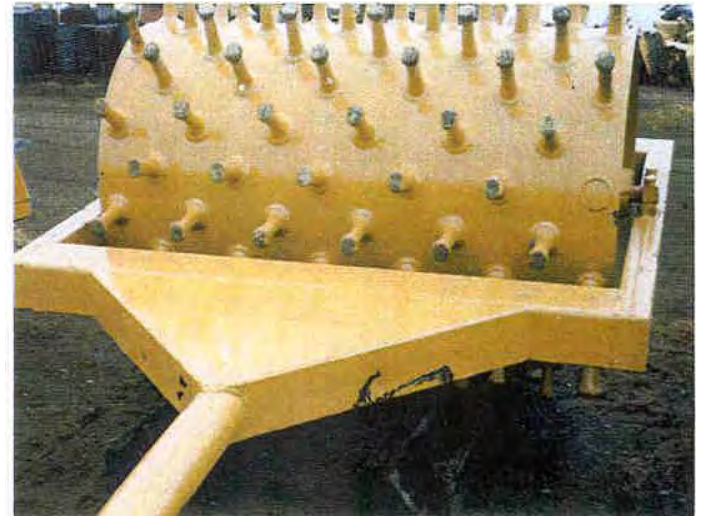
30 tons and over (use manufacture's rated capacity)



Class 531

Compactors

Tow-type, including sheepfoot, vibrating and non-vibrating



Class 531

Compactors

Tow-type, including sheepfoot, vibrating and non-vibrating



Class 531

Compactors

Tow-type, including sheepfoot, vibrating and non-vibrating



Class 532

Compactors

Self-propelled, non-vibratory



Class 533
Compactors
Self-propelled, vibratory, 1 through 2 tons



Class 534
Compactors
Self-propelled, vibratory, over 2 tons



Class 546
Scrapers and Scraper Attachments
Scraper, single engine



Class 547
Scrapers and Scraper Attachments
Scraper, twin-engine



Class 552
Excavators

**Truck mounted, including hydraulic cable operated
combination backhoe units**



Class 555
Excavators

Track-type backhoe, through 99 hp



Class 557
Excavators

Self contained excavator, rubber tire



Class 558
Excavators

Shovel, track-type (100 through 149 hp)



Class 559
Excavators
Shovel, track-type (150 hp and over)



Class 612
Snow Plows, Motor Grader and Tractor Attachments
Widening wing



Class 632
Snow Plows, Attachments
V-shape



Class 633
Snow Plows, Attachments
Power reversible, truck mounted



Class 633
Snow Plows, Attachments
Power reversible, truck mounted



Class 634
Snow Plows, Attachments
One-way (including motor grader or tractor attachments)



Class 635
Snow Plows, Attachments
Widening wing



Class 636
Snow Plows, Attachments
Underbody, fixed moldboard



Class 637
Snow Plows, Attachments
Underbody, power reversible moldboard



Class 701
Bituminous Equipment
Bitumen kettle, 1-2 bbls, inclusive, includes fuel



Class 702
Bituminous Equipment
Bitumen kettle, 3-5 bbls, inclusive, includes fuel



Class 707
Bituminous Equipment
Tank car heater (except wood or coal fired)



Class 708

Bituminous Equipment

Trailer style distributor, including tank and equipment, but not the truck



Class 709

Bituminous Equipment

Patch material heater and mixer (surge bin), trailer or truck mounted



Class 709

Bituminous Equipment

Patch material heater and mixer (surge bin), trailer or truck mounted



Class 710

Bituminous Equipment

Heating Kettle, less than 300 gallons



Class 711
 Bituminous Equipment
 Heating Kettle, 300 gallons or more



Class 712
 Bituminous Equipment
 Self-propelled paver and finishing machine



Class 713
 Bituminous Equipment
 Portable storage tank for oil/emulsion with heating unit;
 charge only for hours heating or pumping



Class 714
 Bituminous Equipment
 Portable supply or storage for oil/emulsion



Class 716

Bituminous Equipment

Distributor, including truck, rear drive, 23,000 through 49,999 lbs



Class 717

Bituminous Equipment

Distributor, including truck, tandem rear drive, 23,00 through 49,999 lbs



Class 718

Bituminous Equipment

Distributor, including truck, tandem rear drive, 50,000 lbs and over



Class 719

Bituminous Equipment

Pavement profiler, 2' and under, not self-propelled



Class 720
Bituminous Equipment
Pavement profiler, self-propelled or not self-propelled
over 2'



Class 720
Bituminous Equipment
Pavement profiler, self-propelled or not self-propelled
over 2'



Class 805
Generators, Portable Electric
3,001 watt output through 10,000 watt output



Class 806
Generators, Portable Electric
10,001 watt output and over



Class 901
Miscellaneous Equipment
Backhoe attachment/Grapple



Class 901
Miscellaneous Equipment
Backhoe attachment/Grapple



Class 902
Miscellaneous Equipment
Brush chipper



Class 906
Miscellaneous Equipment
Mechanical tamper, self-powered



Class 907
Miscellaneous Equipment
Ripper attachments for graders or tractors



Class 908
Miscellaneous Equipment
Surge bin



Class 910
Miscellaneous Equipment
Arrow board, self contained on trailer or truck mounted



Class 911
Miscellaneous Equipment
Conveyor



Class 912
Miscellaneous Equipment
Mudjack



Class 915
Miscellaneous Equipment
Post hole digger (auger) attachment



Class 918
Miscellaneous Equipment
Screening plant



Class 919
Miscellaneous Equipment
Spring tooth or disc harrow attachment



Class 923
Miscellaneous Equipment
Water pump, centrifugal (with or without trailer)



Class 923
Miscellaneous Equipment
Water pump, centrifugal (with or without trailer)



Class 924
Miscellaneous Equipment
Water pump, diaphragm



Class 925
Miscellaneous Equipment
Sprayer, multi-purpose stand alone, liquid distribution system, including tank, spray bar, nozzles, to be used for spot weed spraying or dust control, excluding anti-icing



Class 926

Miscellaneous Equipment

Water tanker or portable tank with pump and spray bars, not for anti-icing, exclusive of motive equipment (no charge may be made while in transit)



Class 926

Miscellaneous Equipment

Water tanker or portable tank with pump and spray bars, not for anti-icing, exclusive of motive equipment (no charge may be made while in transit)



Class 930

Miscellaneous Equipment

Hydro-seeder with water supply



Class 931

Miscellaneous Equipment

Mulch spreader with water supply



Class 932
Miscellaneous Equipment
Brush cutter, (backhoe mounted on boom)



Class 932
Miscellaneous Equipment
Brush cutter (backhoe mounted on boom)



Class 933
Miscellaneous Equipment
Shoulder drag



Class 934
Miscellaneous Equipment
Concrete saw, through 9 hp, including blades



Class 935
Miscellaneous Equipment
Concrete saw, 10 through 24 hp, including blades



Class 936
Miscellaneous Equipment
Concrete saw, 25 hp and over, includes blades



Class 937
Miscellaneous Equipment
Hot air lance



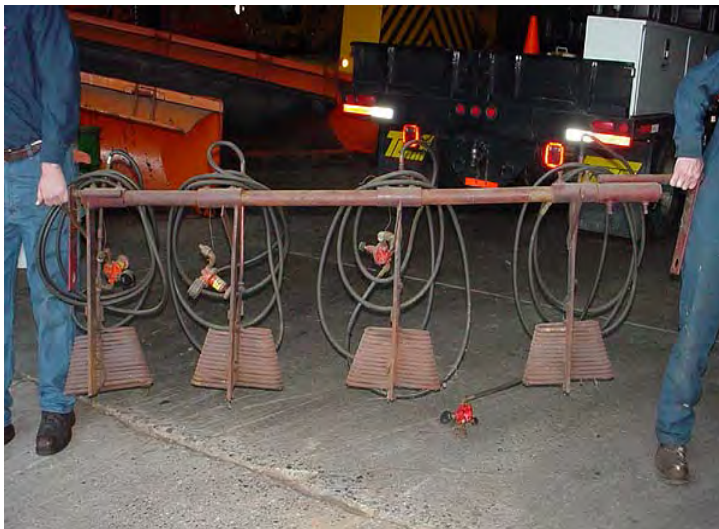
Class 938
Miscellaneous Equipment
Pavement router/joint cleaner/roto-cutter, asphalt,
including bits



Class 939
Miscellaneous Equipment
Field office, Class A



Class 940
Miscellaneous Equipment
Brush cutter (tractor mounted)



Class 941
Miscellaneous Equipment
Bump burner, infrared or open flame grader attach



Class 942
Miscellaneous Equipment
Post pusher/driver (wood or metal)



Class 946
Miscellaneous Equipment
Trailer, sign



Class 947
Miscellaneous Equipment
Portable pressure washer (heated or not heated) –
attached wheels, capacity thru 20 hp



Class 948
Miscellaneous Equipment
Aerial platform (self-propelled or trailer mounted /
not mounted on a truck)



Class 949
Miscellaneous Equipment
Attenuator (with or without arrow board)



Class 950
Miscellaneous Equipment
Centerliner, mounted on dual axle truck



Class 951
Miscellaneous Equipment
Centerliner, mounted on single axle truck



Class 952
Miscellaneous Equipment
Liquid dust control, applicator only



Class 953
Miscellaneous Equipment
Boom for mowers, attached to tractor



Class 954

Miscellaneous Equipment

Sign truck, any combination of storage cabinets, auger and aerial platform (primarily used for installing signs)



Class 955

Miscellaneous Equipment

Tailgate conveyor or spreader box



Class 956

Miscellaneous Equipment

Hydraulic drill



Class 958

Miscellaneous Equipment

Message board (programmable) maximum charge of 12 hours in a 24 hr period



Class 960

Miscellaneous Equipment

**Portable pressure washer (heated or not heated)
– attached wheels, capacity 21 hp and greater**



Class 970

Miscellaneous Equipment

**Boom utility truck, any combination of storage
cabinets, auger and man bucket (not primarily used
for sign installation)**



Class 975

Miscellaneous Equipment

**Welder, electric, 0 – 300 amp capacity (does not
include cost of welding rod)**



Class 976

Miscellaneous Equipment

**Welder, electric, 301 amp capacity and up (does not
include cost of welding rod)**



Class 1118

Trucks

Tandem rear drive, 50,000 lbs and over, with tri-axles



Class 1128

Trucks

Tandem rear drive, 50,000 lbs and over, with quad-axles

No images for:

Class 115 – Commissioner Vehicle (Administration Account)

Class 120 – Patrol superintendent vehicles