

Date: January 4, 2019 (updated October 2019 for State ROW permits website)

Subject: Temporary Traffic Control Devices for Utility and Other Permitted Work

- Beginning in January 2020, use maximum target value channelizers (drums or 42" cones).
- The Guidelines for Construction, Maintenance, & Utility Operations ([Work Zone Safety Booklet](#)) will be updated in late 2019 to reflect these requirements.
- WisDOT is developing online training that will be made available to anyone.

WisDOT has implemented standards for work zone design and devices to provide consistent work zones to all road users. When purchasing or renting traffic control devices to meet WisDOT standards, it is advised to follow state specifications.

The MUTCD depicts several channelizer alternatives. To capture the attention of the driver, WisDOT requires channelizers that provide maximum target value in transition areas and to separate traffic from workers. Worker safety is improved by providing clear delineation between the travelled way and the work area.

[FDM 11-50-21.3](#) describes different channelizers and their uses, which is shown below.

### 21.3.1 Drums

Drums have a high target value and provide a consistent dimension regardless of orientation to traffic. Use drums as the primary channelizing device for lane closures, lane shifts, shoulder closures, and ramp closures.

### 21.3.4 Traffic Control Cones

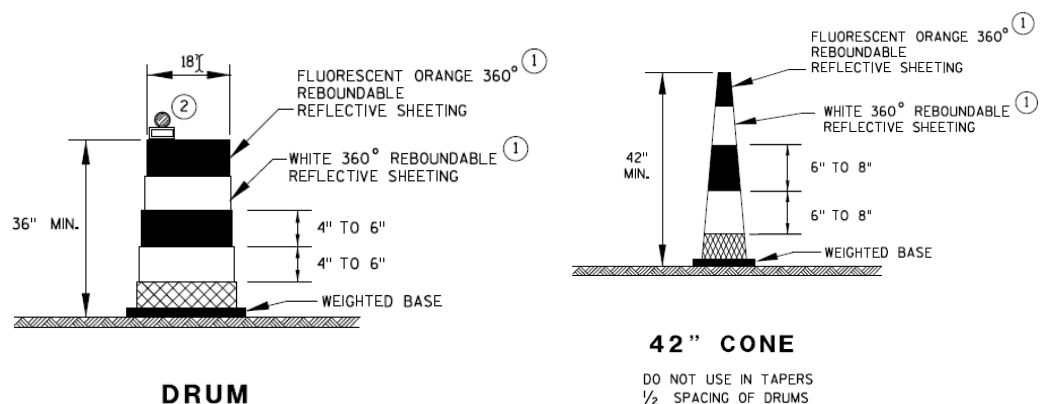
42-inch traffic control cones may be used to delineate and channelize traffic through the tangent section or activity area of lane closures and to mark specific hazards. Also, the 42-inch traffic cones may be used during flagging operations on two-lane two-way roadways.

42-inch Traffic Control Cones are allowed as channelizing devices and may be used in the following situations:

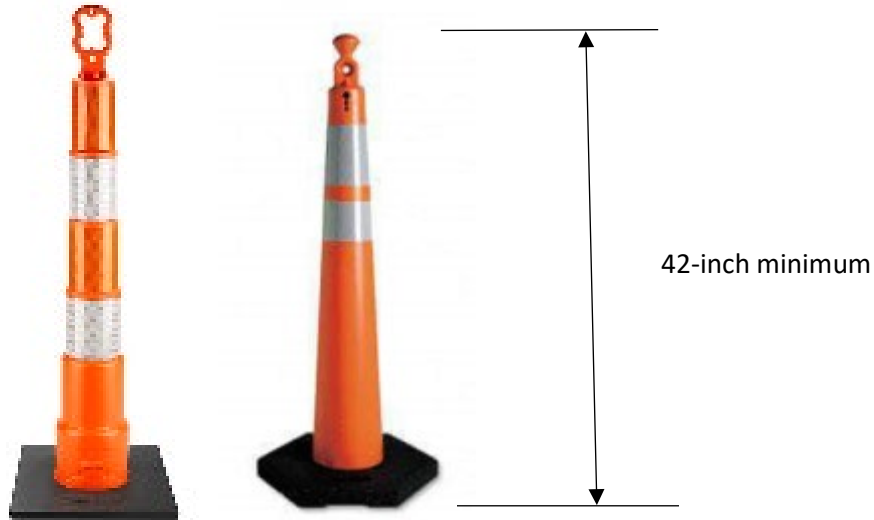
- On an urban project where there are space and/or sight restrictions.
- Any duration of work where the use of a plastic drum would restrict proposed lane widths to less than 11 feet including shy distance.

42-inch traffic control cones are not allowed in the following situations:

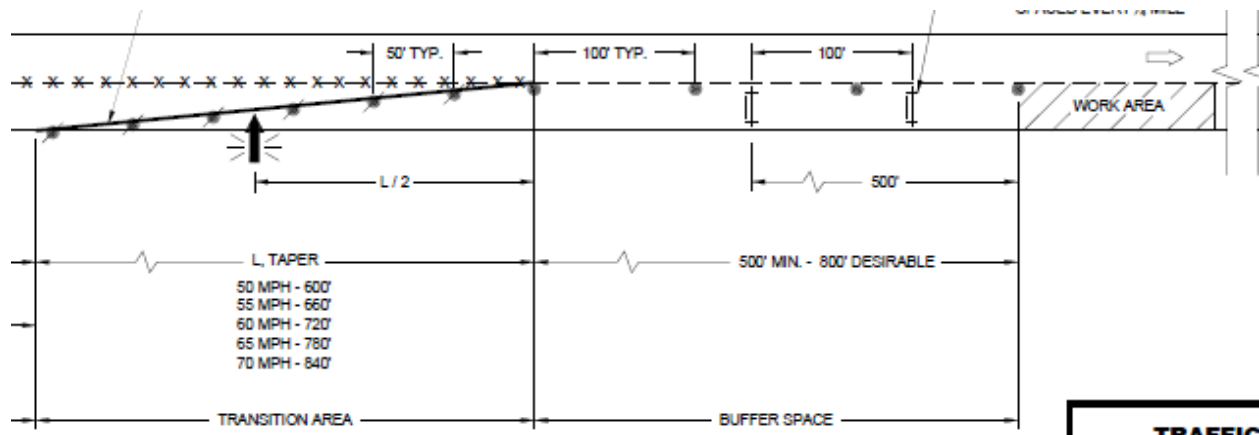
- Lane tapers
- Shoulder closures
- To delineate Temporary Traffic Signal Trailers, Message Boards or Arrow Boards
- To delineate roadside materials or equipment.



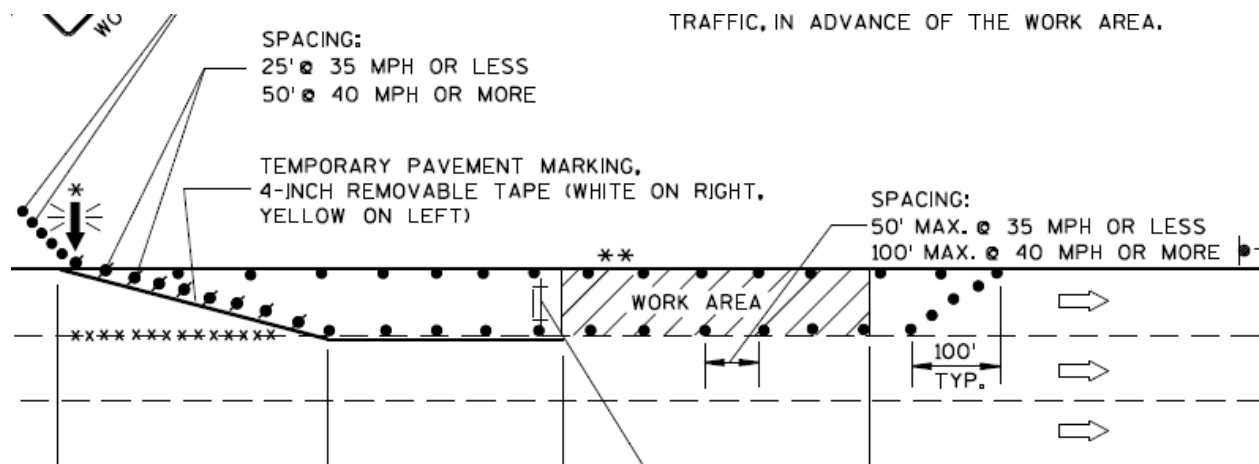
There are various cone designs.



For speeds 40 mph or more, drums shall be spaced 50 feet apart in tapers and 100 feet apart in longitudinal sections. Cones shall not be used in tapers and spaced 50 feet apart in longitudinal sections. For speeds 35 mph or less, drums shall be spaced 25 feet apart in tapers and 50 feet apart in longitudinal sections. Cones shall not be used in tapers and spaced 25 feet apart in longitudinal sections.



Standard Detail Drawing 15d12



Standard Detail Drawing 15d20