

Public Involvement

**Bus 51
City of Wausau, Badger Avenue
County U to West Campus Drive
Marathon County**

Project ID: 6999-00-11



October 2025

This handout and other items are available on this project's design website at

<https://wisconsindot.gov/Pages/projects/by-region/nc/bus51wausau/default.aspx>

Thank you for your interest in this project. We look forward to your feedback.

Purpose

The Wisconsin Department of Transportation (WisDOT) is in the process of developing plans for proposed improvements on approximately 0.3-mile of Bus 51 in Marathon County. The purpose of this handout is to provide information regarding the proposed improvements, describe the potential impacts, and offer an opportunity for public comments.

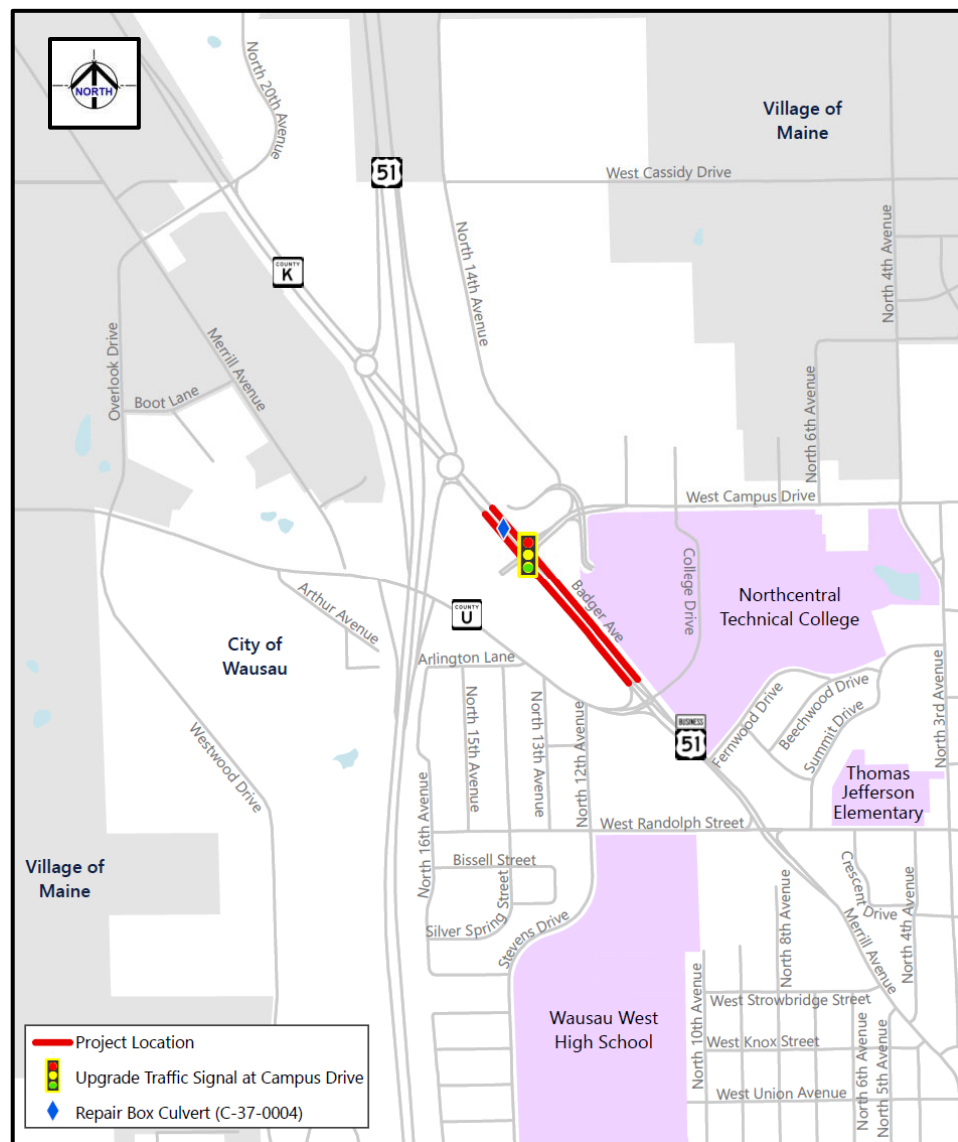
Your comments assist us in developing a project that will serve the needs of the traveling public as well as the needs of the local community and are welcomed and appreciated throughout the design process.

Included at the end of this handout, as well as on the project website, is a comment form that may be used for written comments regarding the proposed improvements. You are encouraged to fill out this form and return using the pre-paid mailer attached. Comments may also be submitted via email or phone to the contact listed below.

Project location

The project is located on Bus 51 in the city of Wausau between County U and West Campus Drive.

(Bus 51 Project Limits)



Project purpose and need

The pavement was reconstructed originally constructed with new pavement in 1954 (southbound lanes) and 1961 (northbound lanes) between County U and West Campus Drive. The roadway is currently exhibiting signs of severe cracking where it has been overlaid with asphalt. In some areas, the original concrete remains, and it is cracked with joints in poor condition. The roadway also has patching and rutting throughout. The pavement has met the end of its useful service life.

Additional needs include:

- Deteriorated curb and gutter
- Deteriorated drainage facilities including:
 - Two cross culverts
 - Box culvert (C-37-0004) located north of West Campus Drive including poor drainage on the channel on the northeast side of the culvert
- Outdated traffic signal equipment at the West Campus Drive intersection
- Lack of pedestrian accommodations at the Bus 51/West Campus Drive intersection

Proposed improvements

The following improvements are proposed to address the project needs.

Pavement improvements

- Replace existing pavement with new concrete pavement from the north side of County U to the north side of West Campus Drive

Drainage improvements

- Replace curb and gutter within the project limits
- Replace two cross culverts
- Repair box culvert C-37-0004 located north of West Campus Drive
- Improve the drainage along the northeast side of the box culvert with ditch cleaning

Sidewalk improvements

- Construct new sidewalk along the north and south sides of West Campus Drive connecting to existing sidewalks
- Provide a new pedestrian crossing across Bus 51

Traffic signal improvements

- Upgrade the traffic signals at West Campus Drive with modern equipment

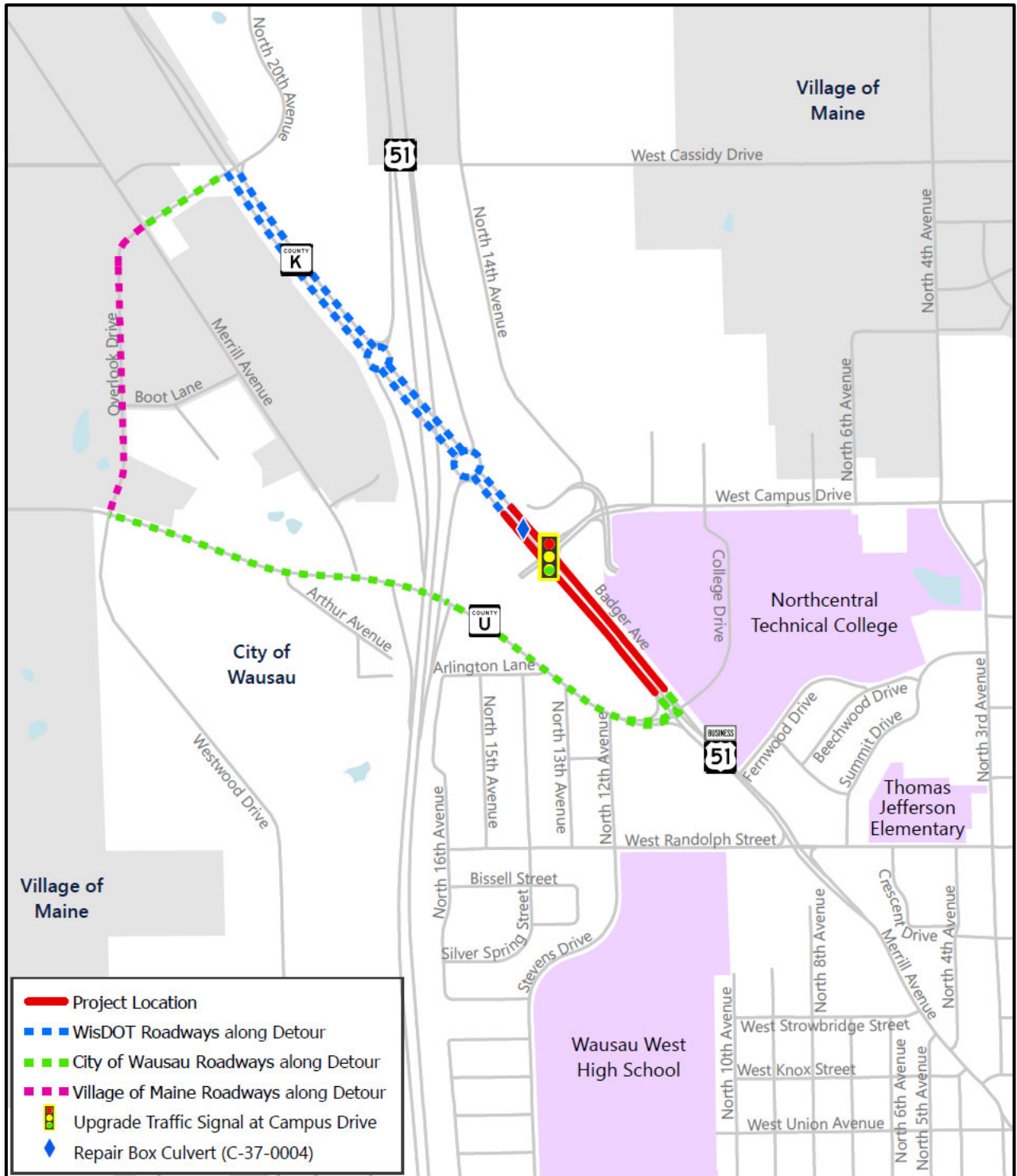
Proposed traffic impacts

Construction is currently scheduled for 2028.

- Work will be completed under staged construction.
- Traffic movements will be detoured along County U to Overlook Drive to County K in various stages to maintain access to Bus 51 and West Campus Drive.
- The project will also maintain local and emergency traffic.
- Motorists can expect some delays to occur.

(see detour route map on the following page)

(Bus 51 Detour Route)



Real estate

Right of way and easements are required for the project.

- Fee acquisition may be required for the sidewalk improvements along West Campus Drive.
- Temporary easements will be required for the project:
 - For blending slopes around the West Campus Drive intersection.
 - Along the west side of Bus 51 to provide access to the west side businesses through the existing parking lot.

Preliminary real estate needs are shown on the exhibit posted on the website. A landowner rights pamphlet is available.

WisDOT will acquire real estate. Any impacted property owners will be contacted directly during the design process. WisDOT expects to begin real estate acquisition in spring 2026.

Project update/next steps

- Local Officials Meeting – Sept. 17, 2025
- Public Involvement Comment Period – October 2025
- Preliminary plans and reports – Fall 2025
- Environmental Document – Fall 2025
- Right of Way Acquisition – Spring 2026 to Spring 2027
- Final plans - May 1, 2027
- Construction – 2028

Public input/comments

Your comments assist us in developing a project that will serve the needs of the traveling public as well as the needs of the local community. Your input is welcome and appreciated throughout the design process.

There are several ways to submit your input by **October 29, 2025**:

1. Fill out the comment form attached to this handout and mail it to WisDOT
2. Complete the fillable online survey on the project website
<https://wisconsindot.gov/Pages/projects/by-region/nc/bus51wausau/default.aspx>
3. Email comments or questions to the contact(s) listed below

Deaf, hard-of-hearing, deaf-blind, and speech-disabled persons should contact the Wisconsin Relay Service by dialing 711.

For more information, please contact:

Todd Laska
Project Leader
Wisconsin Department of Transportation
1681 Second Avenue South
Wisconsin Rapids, WI 54495
(715) 421-8302
Todd.Laska@dot.wi.gov

Tim Hanley, P.E.
Project Manager
Wisconsin Department of Transportation
1681 Second Avenue South
Wisconsin Rapids, WI 54495
(715) 421-8050
Timothy.Hanley@dot.wi.gov



Open for
Business

In This Together Program

*A quick guide to help your business
prepare for road construction*

1 ORGANIZE EARLY



- Learn more about the project and its timeline
- Develop questions for WisDOT staff
- Check in with neighboring businesses and/or local business organization



- *Can you partner on promotions, events or materials?*
- *Establish a point of contact for the business community?*

2 STAY ENGAGED WITH THE PROJECT



- Attend public involvement meeting(s)
- Make note of contact information for the project team, and voice the unique needs of your business
- Learn more about project resources



- *Is there a construction website?*
- *Is there a mailing list?*
- *Is there an email distribution?*

3 HELP CUSTOMERS FIND YOU



- Consult with project staff to determine when and where there may be closures or detours
- Ask about temporary signage options
- Consider how best to inform customers



- *Maybe a joint communication with neighboring businesses for employees and customers about traffic and parking?*
- *Maybe a feature article in a customer-facing newsletter?*
- *Maybe a social media post shared by businesses and local community pages?*

4 DEVELOP AND ACTIVATE YOUR GAME PLAN



- Check out case studies at wisconsindot.gov/together
- Connect with project contacts to discuss any potential obstacles specific to your business such as deliveries, operational hours, employee parking, etc.
- Check in with employees



- *Is there a consistent message for customers?*
- *Are there temporary changes to shift times, parking, or deliveries?*

5 END OF CONSTRUCTION



- Stay positive, be flexible and know that WisDOT staff are available to help
- Collect any temporary signage
- Let customers know!



- *Consider working with other businesses on a special event?*
- *Share social media about the project's benefits?*
- *Ask customers to help spread the word?*



Remember, we are In This Together! For more planning ideas, tips and resources:
wisconsindot.gov/together

Project ID 6999-00-11
City Wausau, Badger Avenue
County U to West Campus Drive
Bus 51, Marathon County

The information in this document including names, addresses, phone numbers, email addresses, and signatures is not confidential, and may be subject to disclosure upon request, pursuant to the requirements of the Wisconsin open records law, sections 19.31 - 19.39 of the Wisconsin Statutes.

Fold here

Place
Stamp
Here

Attn: Todd Laska
WisDOT North Central Region – Wisconsin Rapids
1681 Second Avenue South
Wisconsin Rapids, WI 54495

To mail, fold here and tape.