

This presentation is for the project on WIS 49 between Waupaca and Scandinavia in Waupaca County.

An in-person meeting is not planned based on public health guidance to limit public gatherings.

All materials, including the handout with a comment form, are posted on the design website for this project.

<https://wisconsin.gov/Pages/projects/by-region/nc/wis49waupacacounty/default.aspx>

If you have any questions, please contact WisDOT Project Manager, Wendy Arneson at (715) 421-7391. Deaf or hard of hearing persons needing assistance should contact the Wisconsin Telecommunications Relay system (dial 711).

# Public Involvement

## WIS 49

### Waupaca to Scandinavia

October 19, 2020 to November 20, 2020



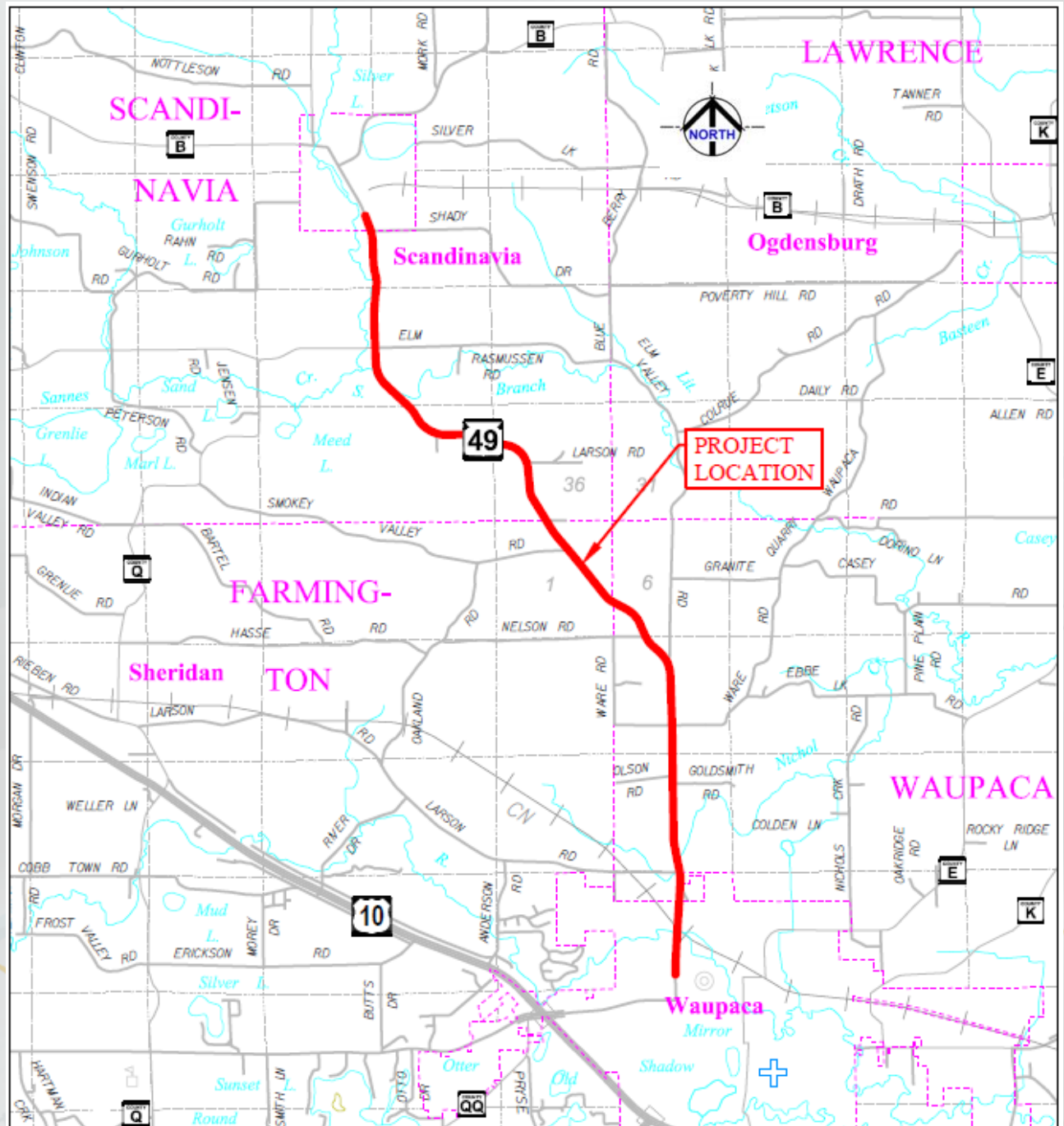
# Project team

- WisDOT North Central Region
  - Wendy Arneson, P.E. - Project Manager
  - George Fechhelm - Project Leader
- EMCS, Inc.
  - Stephanie Christensen, P.E. - Consultant Designer
  - Scott Kaiser, P.E. - Consultant Designer

# Overview

- Project location
- Project purpose and need
- Proposed improvements
- Real estate needs
- Construction staging
- Current project schedule
- Discussion

# Project location



# Project Purpose and Need

- WIS 49 importance
  - Regional route for truck and passenger vehicles
  - Primary link between Waupaca and Scandinavia
  - Truck route for freight movement
- WisDOT's objective is to ensure the safe and efficient operations of the state's highway system while supporting local access.



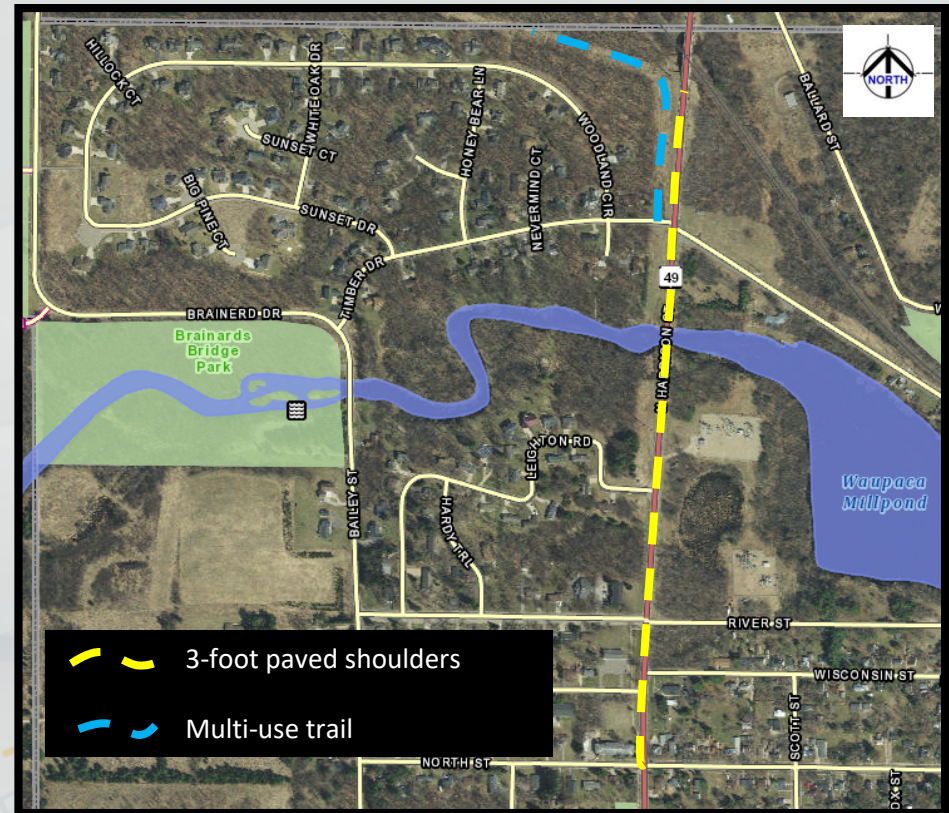
# Project Purpose and Need

- Identified needs

- Deteriorating pavement with cracking and rutting present
- Existing guardrails and spot curb and gutter are deteriorating
- Drainage culverts are in poor condition
- Curb ramps do not meet Americans with Disabilities Act (ADA) standards in Waupaca
- Ongoing erosion on the west side of WIS 49 approximately a half-mile north of County Q

# Project Purpose and Need

- Identified needs:
  - Bicycles and pedestrians are using the existing 3-foot paved shoulders between the residential areas in Waupaca and an existing multi-use trail near Timber Drive.





# Proposed Improvements

- Pavement resurfacing with additional improvements best addresses the project needs
  - Balances level of investment in the roadway system while achieving added pavement life
- Implementing a cycle of well-timed pavement maintenance ensures that the taxpayers' investment continues to be maximized

# Proposed Improvements

- Improvements recommended to keep traffic moving safely and efficiently
  - Pavement resurfacing with installation of centerline rumble strips
  - Guardrail replacements and spot curb and gutter repairs
  - Four culvert replacements, including the culvert at Nichol Creek
  - Replacement of curb ramps to meet Americans with Disabilities Act (ADA) standards. We are also evaluating a sidewalk extension with the city of Waupaca between River Street and Leighton Road.
  - Construction of two retaining walls with new guardrails to stabilize the ongoing slope erosion approximately a half-mile north of County Q
  - Shoulder paving between North Street and Timber Drive to better accommodate multi-modal users

# Real Estate Needs

- Minor permanent fee and temporary limited easements are needed for improvements
- Acquisition process
  - WisDOT will acquire real estate
  - Real estate staff will meet with impacted property owners.
  - Begin real estate acquisitions in spring 2021
- Landowner rights brochure is available on the project website

# Proposed construction staging

- Maintaining safety and mobility are important during construction
- Proposed traffic impacts
  - Single lane closures with flagging conditions
  - Local and emergency access will be maintained
  - During replacement of the culvert at Nichol Creek, access to WIS 49 from Larson Road will be temporarily closed
- Work is planned in 2024 but could be advanced to 2023
  - Work is estimated to take three to four months to complete

# Current project schedule

- Concept plans - May 2020
- Local official meeting - October 2020
- Public involvement - October/November 2020
- Environmental document - Winter 2020
- Preliminary plans - Winter 2020
- Right of way plat - Spring 2021
- Real estate negotiations - Spring 2021 to fall 2022
- Final plans - August 2022
- Construction currently scheduled - 2024\*

\* *Construction could be advanced to 2023*



# Project design website

<https://wisconsin.gov/Pages/projects/by-region/nc/wis49waupacacounty/default.aspx>

Wisconsin.GOV Agency Directory Online Services

State of Wisconsin  
Department of Transportation

DMV ONLINE SERVICES ▾ DMV INFO ▾ DOING BUSINESS ▾ TRAVEL **STEP 1** PROJECTS AND STUDIES ▾ ABOUT WISDOT ▾

Search Wisconsin DOT

## North Central Region Projects and Studies

[WisDOT COVID-19 information](#)

- WisDOT continues to monitor the public health crisis as it applies to essential highway maintenance and construction projects. Workers who support the construction of critical or strategic infrastructure are considered essential by the U.S. Department of Homeland Security.
- Workers are expected to continue to take precautions against the spread of COVID-19 at the office and job site.
  - Monitor the [Wisconsin Department of Health](#) for latest information and guidance.
- With our partners in industry, we will strive to keep this construction season on schedule.

### Projects Under Construction

[View active North Central Region construction projects](#)

**STEP 2** [Projects in Design](#) (not all design projects have a website)

transportation projects are suspended temporarily and will be rescheduled as soon as possible.

- The department is reviewing options for alternative meeting formats.
- WisDOT will continue to rely on public input to help shape transportation projects and policies.

