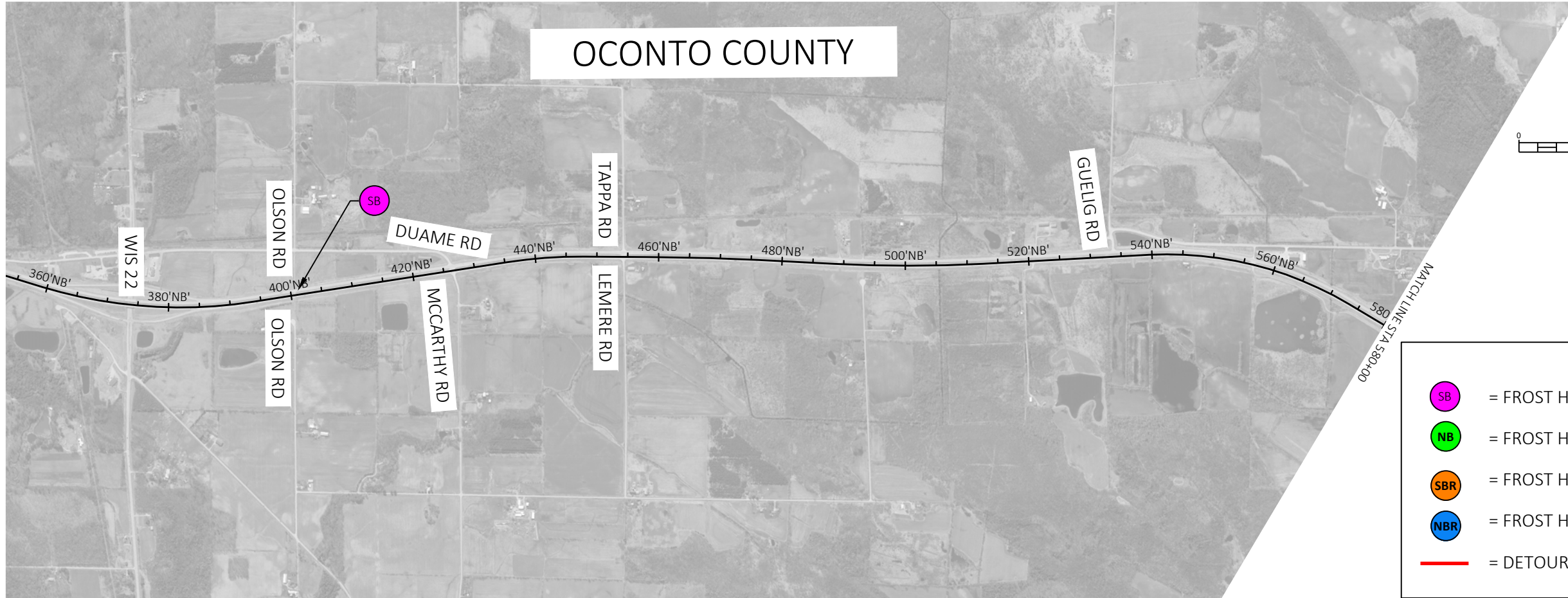


OCONTO COUNTY

PROJECT ID 1490-39-71
LENA - POUND
WIS 22 - WIS 64
US 141
OCONTO & MARINETTE COUNTIES



LEGEND

- SB = FROST HEAVE REPAIR US 141 SOUTHBOUND
- NB = FROST HEAVE REPAIR US 141 NORTHBOUND
- SBR = FROST HEAVE REPAIR US 141 SOUTHBOUND RAMP
- NBR = FROST HEAVE REPAIR US 141 NORTHBOUND RAMP
- = DETOUR

OCONTO COUNTY

MILL AND RESURFACE ASPHALT APPROACHES TO RAILROAD CROSSING.

