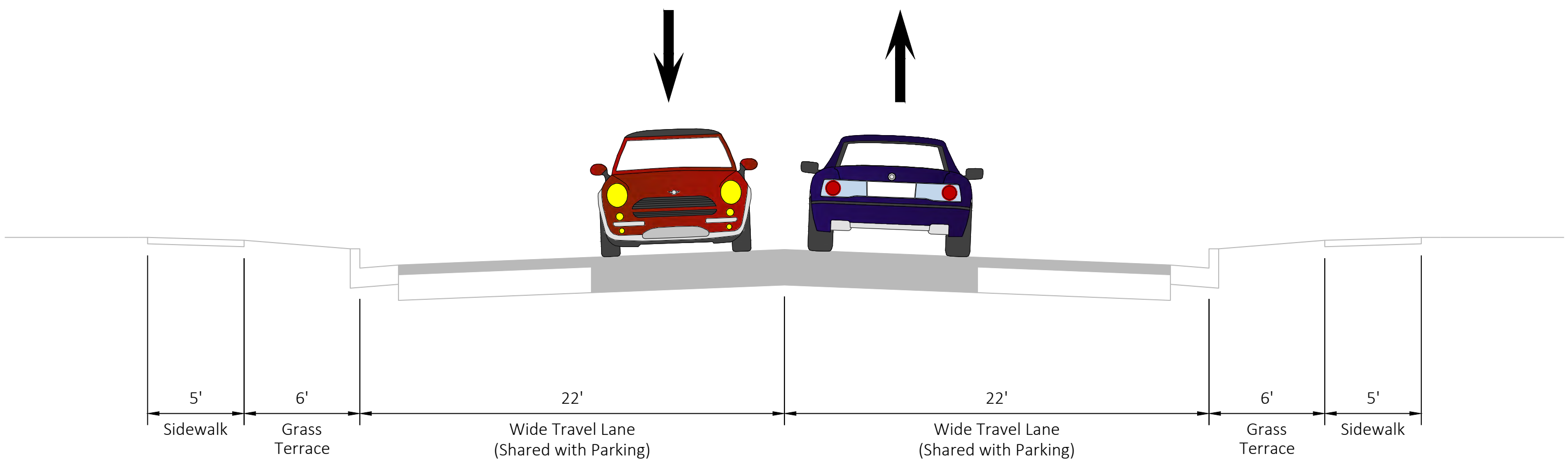


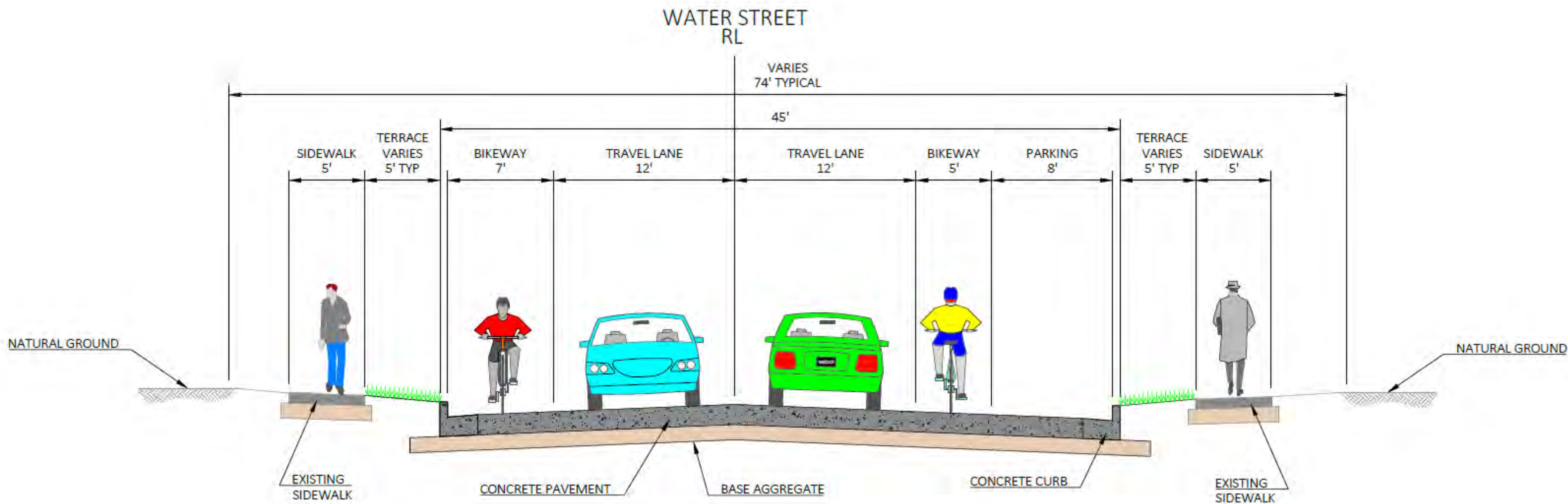
# WIS 32 TYPICAL SECTIONS

NOVEMBER 2023

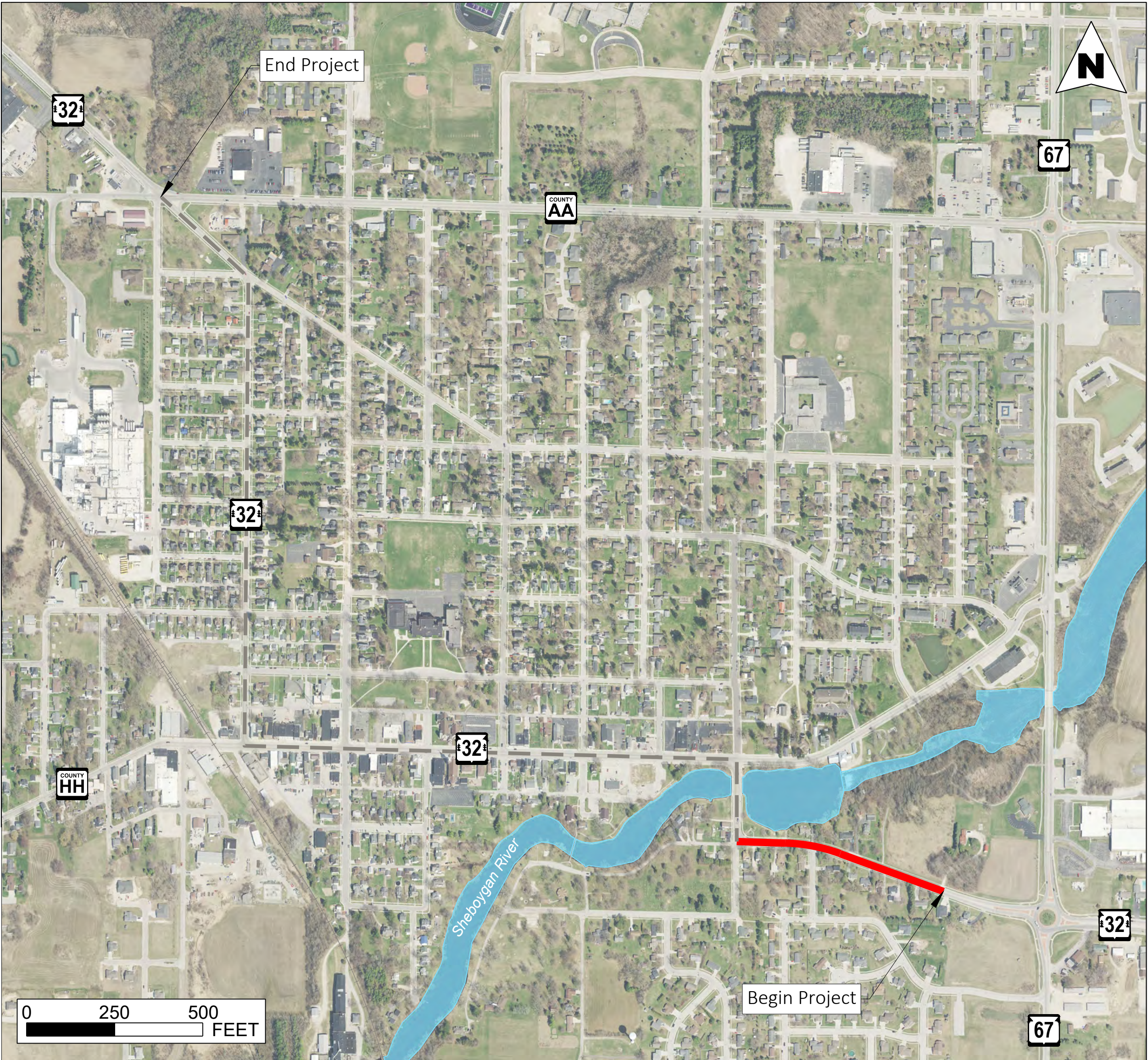
## WATER STREET



Existing Typical Section



FINISHED TYPICAL SECTION - WATER STREET  
STH 67 TO 1ST STREET



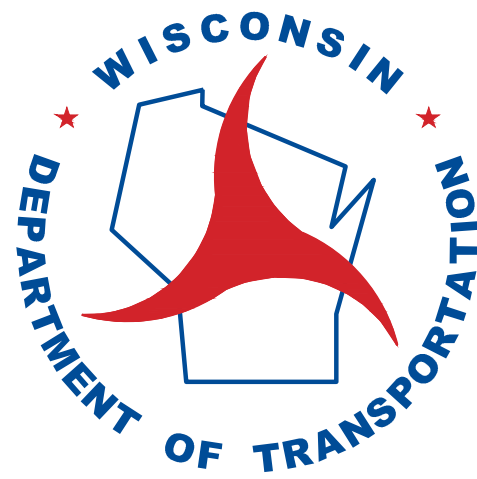
### DESIGN NOTES

- Replacement of all curb ramps and driveway aprons
- Designated and marked on-street parking
- Existing sidewalk would remain in place (except at curb ramp and driveway replacement areas)
- Providing on-street access to multi-use trail

### POTENTIAL ENHANCEMENTS (CITY COST)

- Full sidewalk replacement
- Landscaping and/or streetscape elements
- Continuous and/or decorative street lighting
- Colored or special patterned cross walks

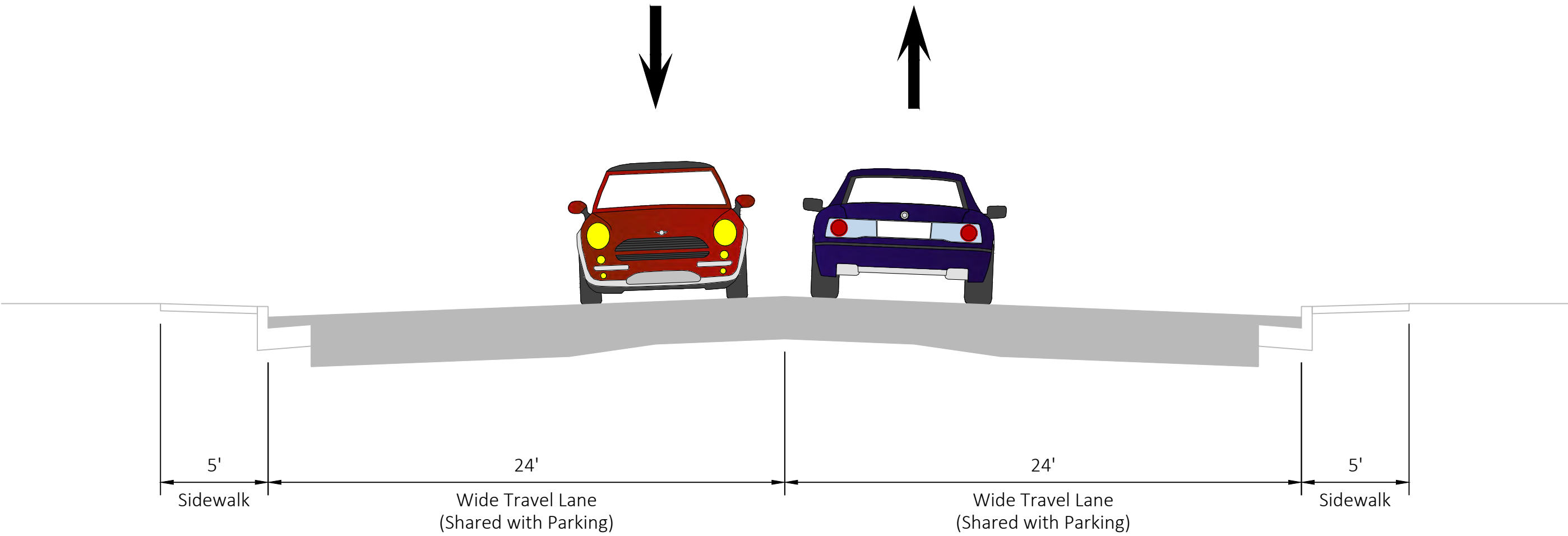




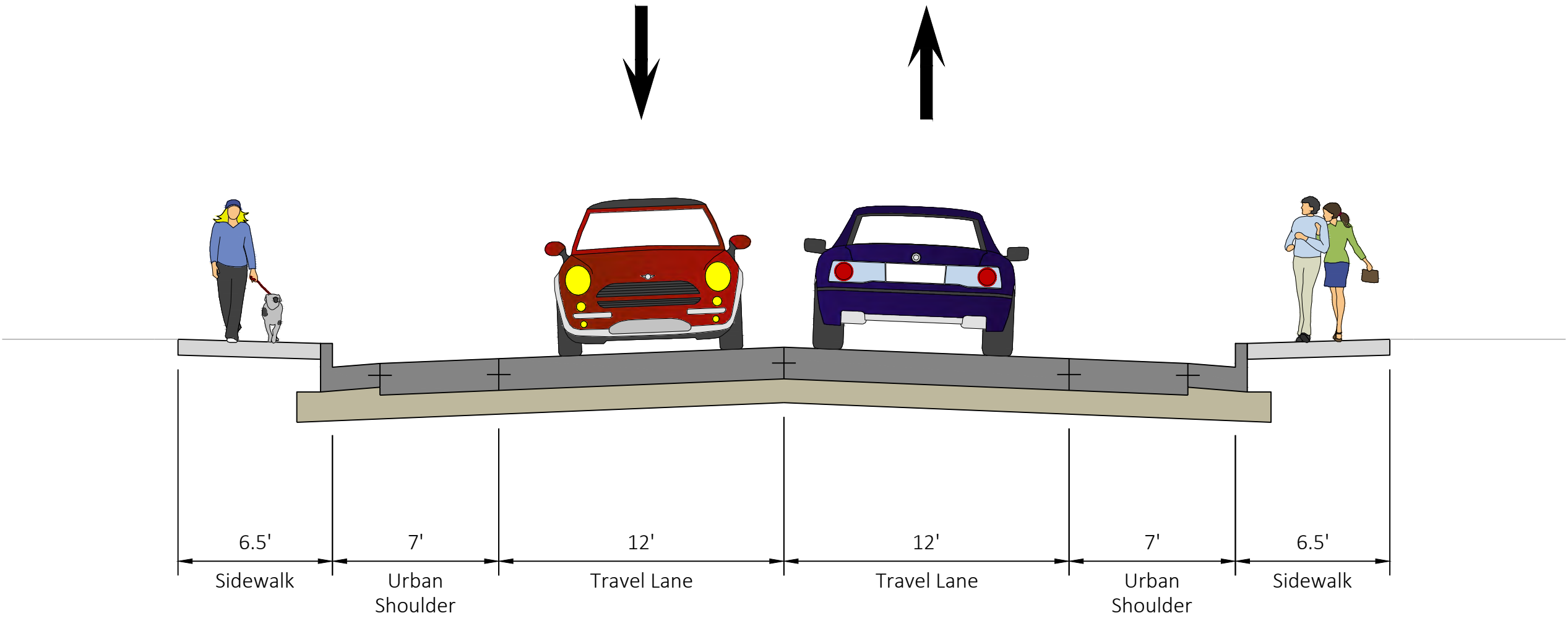
# WIS 32 TYPICAL SECTIONS

NOVEMBER 2023

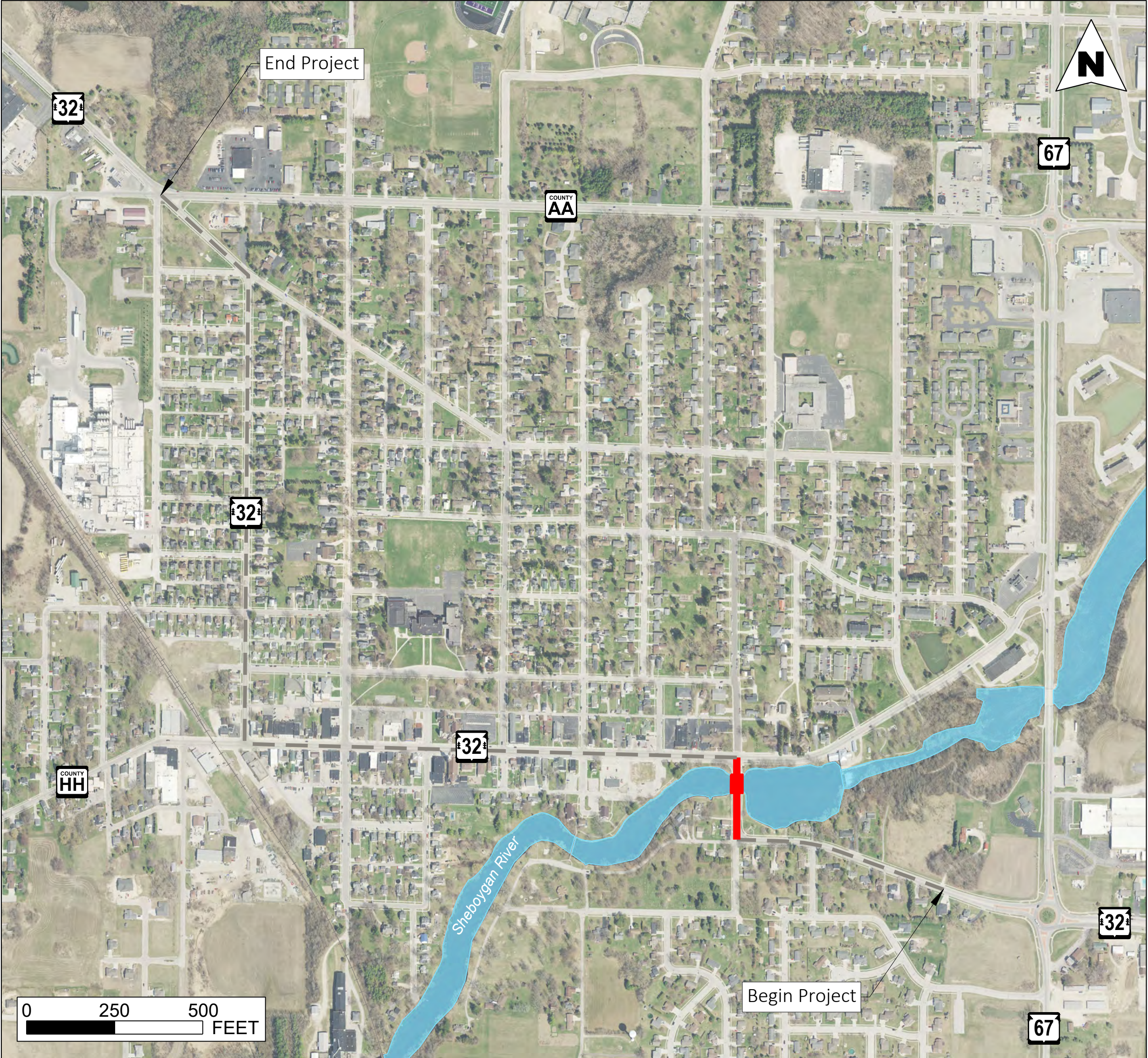
## 1st STREET



Existing Typical Section



Potential Typical Section



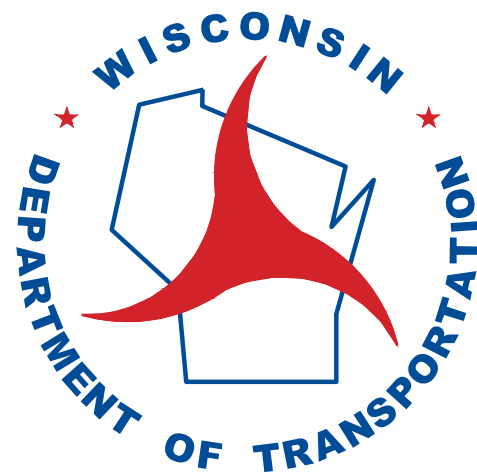
### DESIGN NOTES

- Replacement of bridge over Sheboygan River (narrower width)
- Parking lane removed and parking prohibited to provide a safer transition to the bridge (matches bridge width)
- Replacement of all sidewalks, curb ramps, and driveway aprons
- Urban paved shoulders that will accommodate marked bike lanes

### POTENTIAL ENHANCEMENTS (CITY COST)

- Aesthetic features on the bridge
- Landscaping and/or streetscape elements
- Continuous and/or decorative street lighting
- Colored or special patterned cross walks

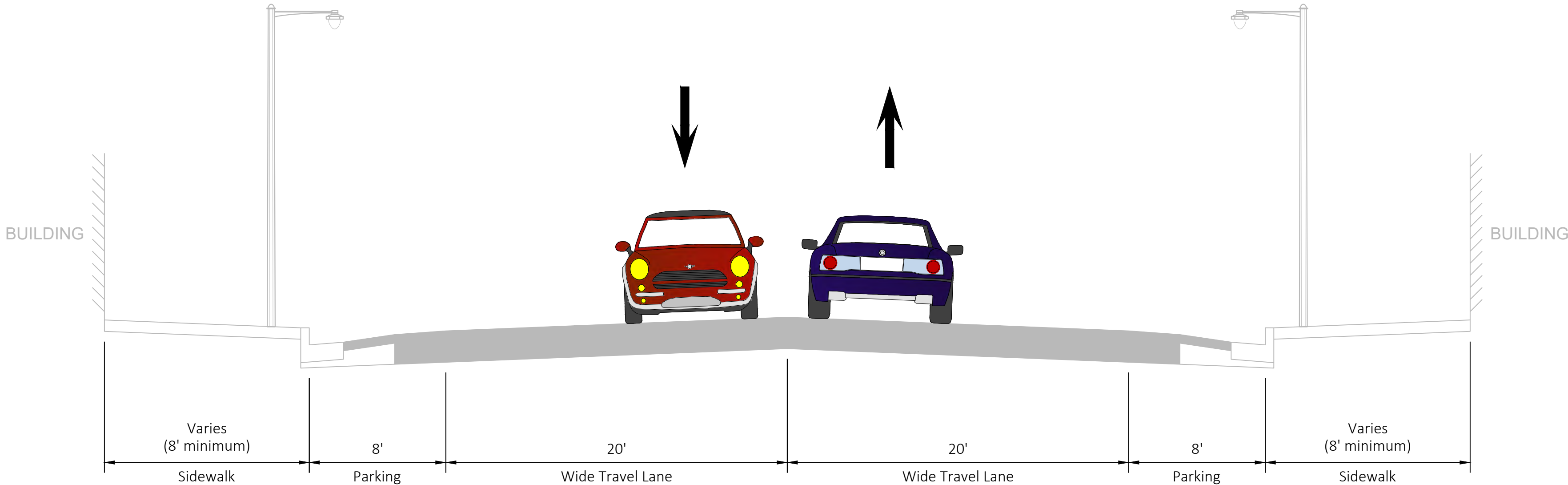




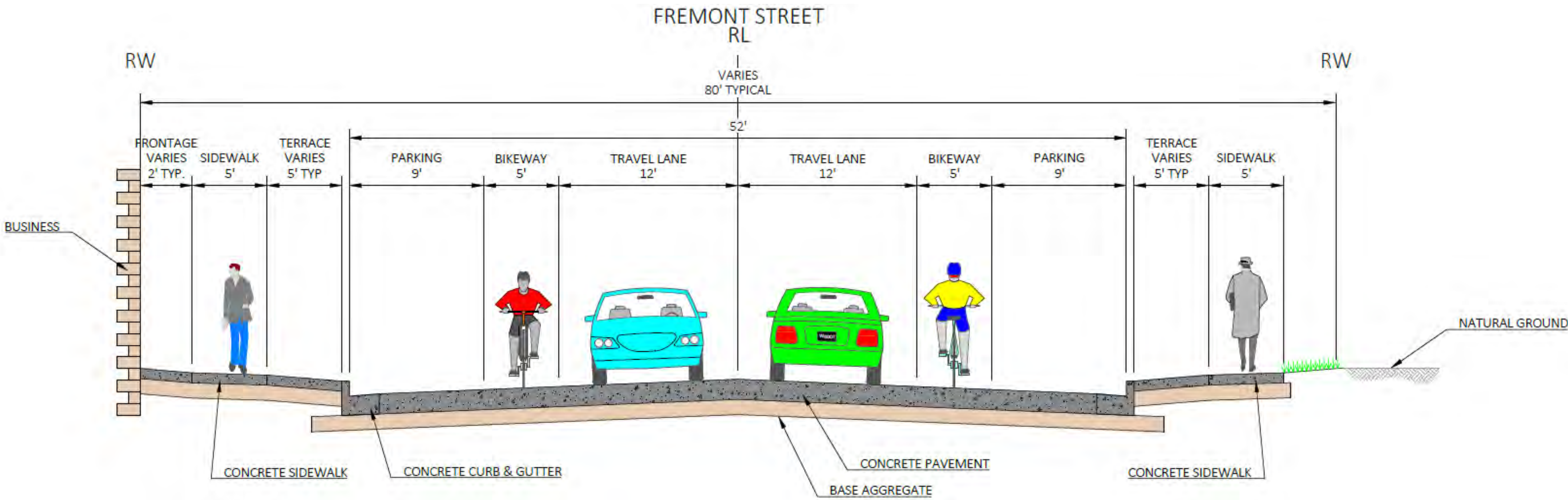
# WIS 32 TYPICAL SECTIONS

NOVEMBER 2023

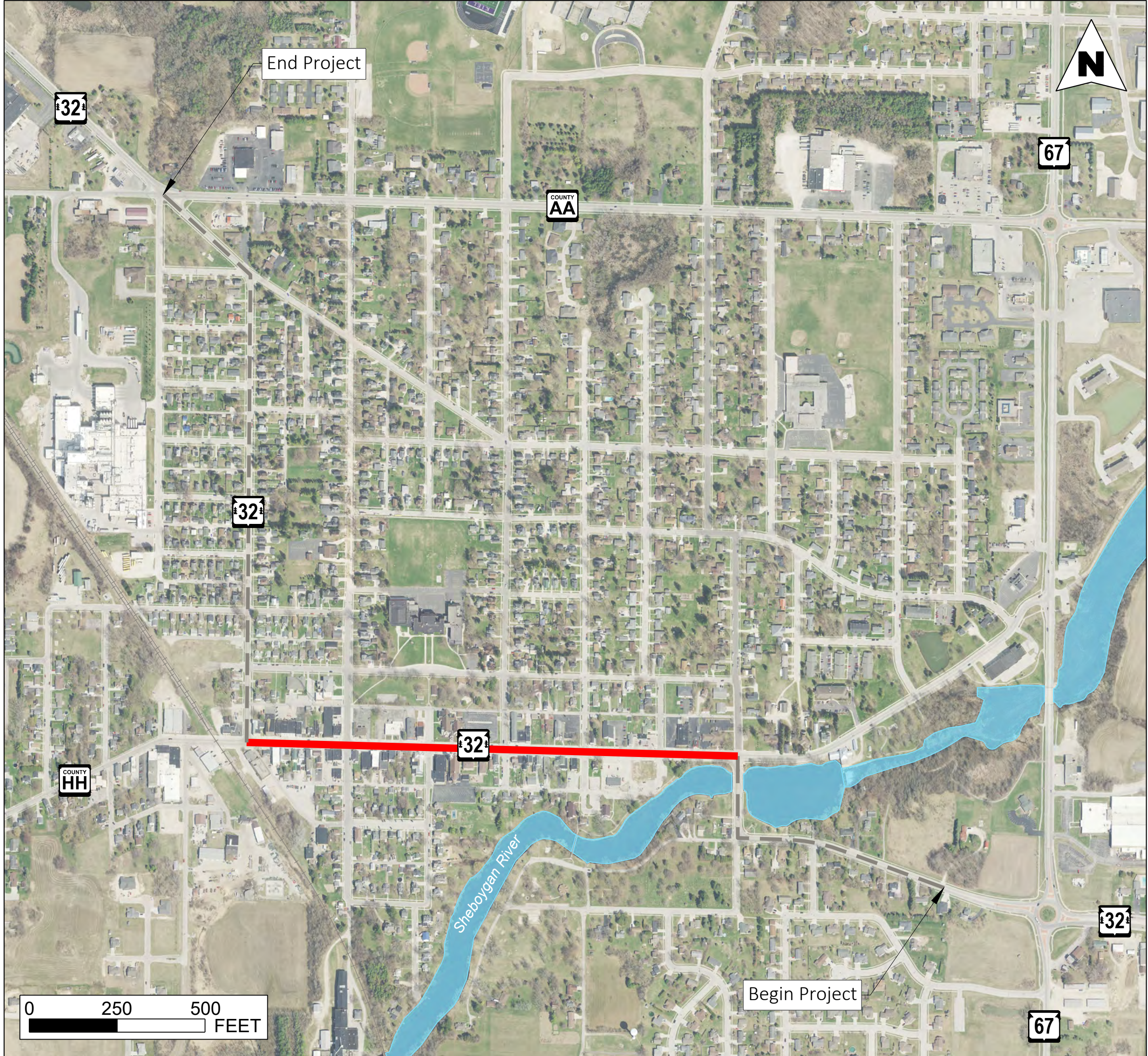
## FREMONT STREET



Existing Typical Section



FINISHED TYPICAL SECTION - FREMONT STREET  
1ST STREET TO 7TH STREET



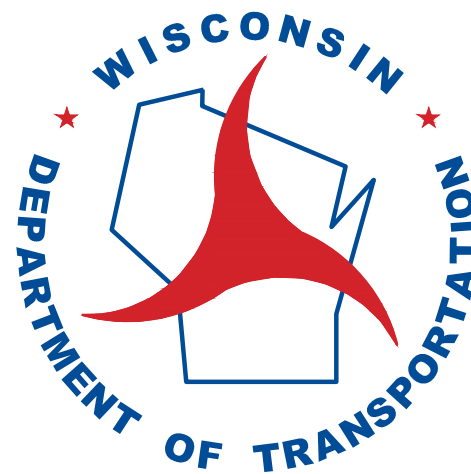
### DESIGN NOTES

- Replacement of all sidewalks, curb ramps, and driveway aprons
- Replacement of storm sewer and utilities
- Widened designated and marked on-street parking
- Urban paved shoulders that will accommodate marked bike lanes

### POTENTIAL ENHANCEMENTS (CITY COST)

- Landscaping and/or streetscape elements
- Decorative street lighting
- Colored/decorative terraces at the back of curb
- Colored or special patterned cross walks

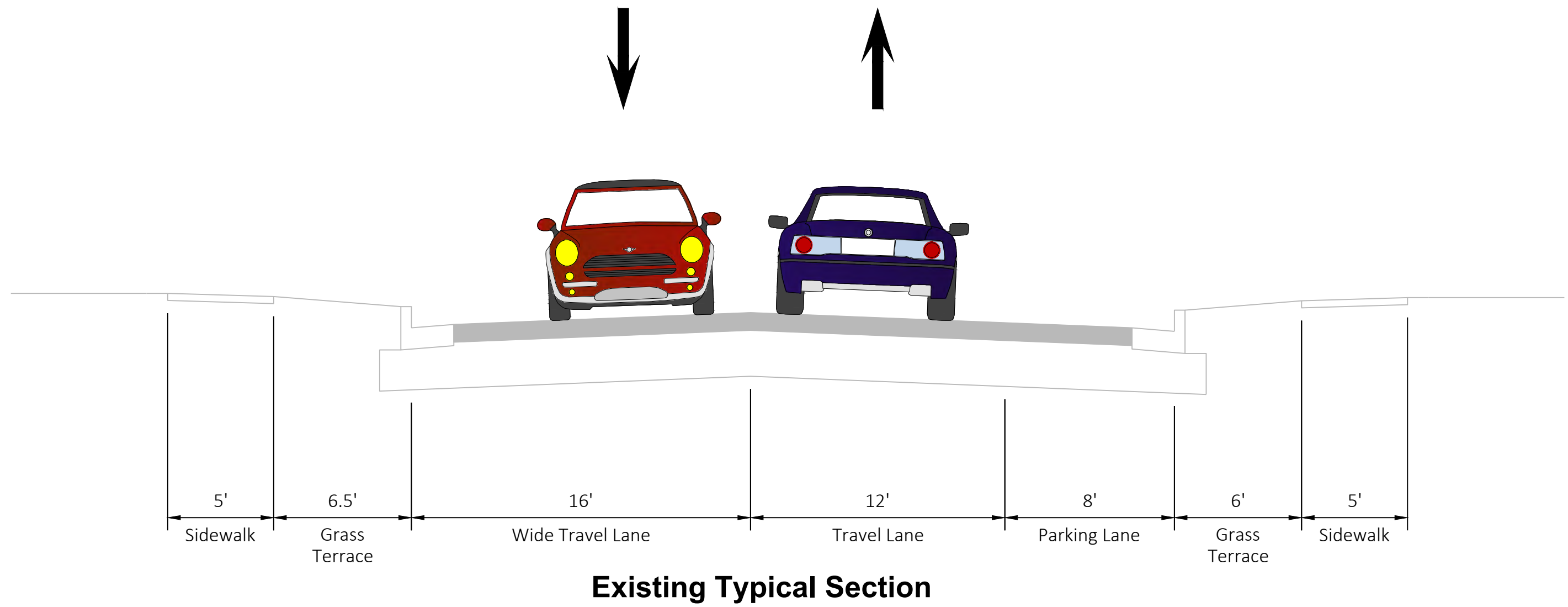




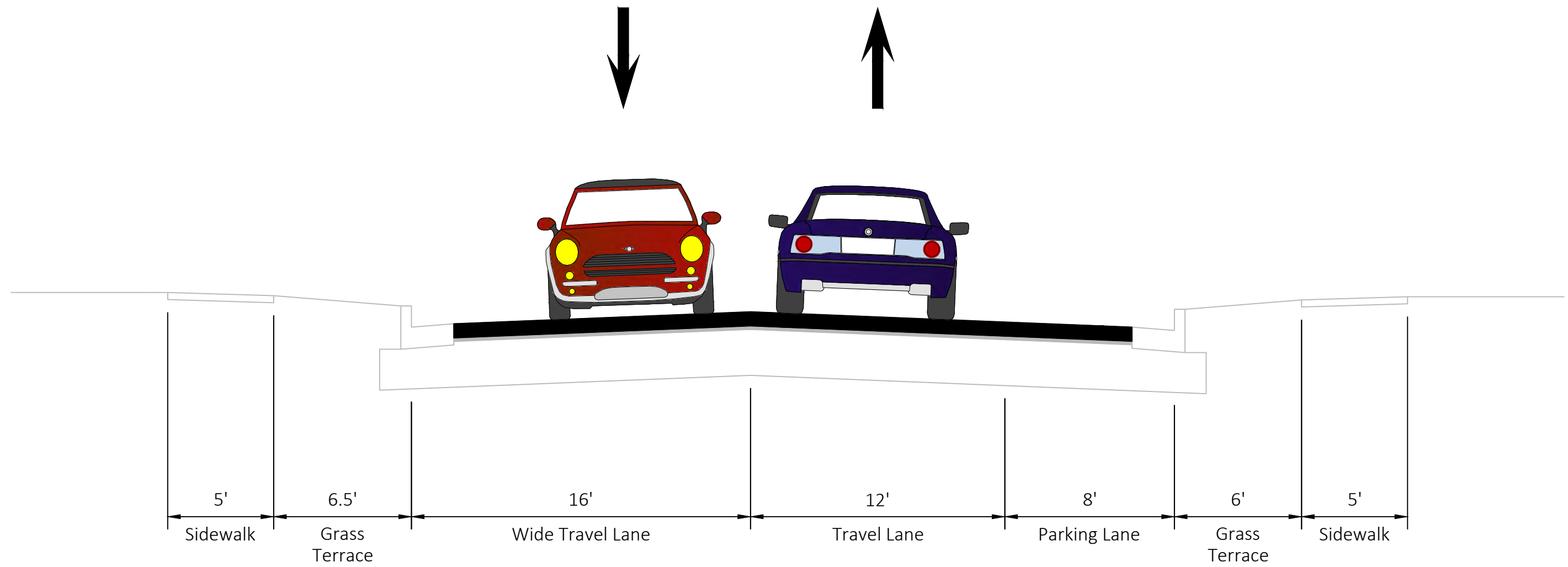
# WIS 32 TYPICAL SECTIONS

NOVEMBER 2023

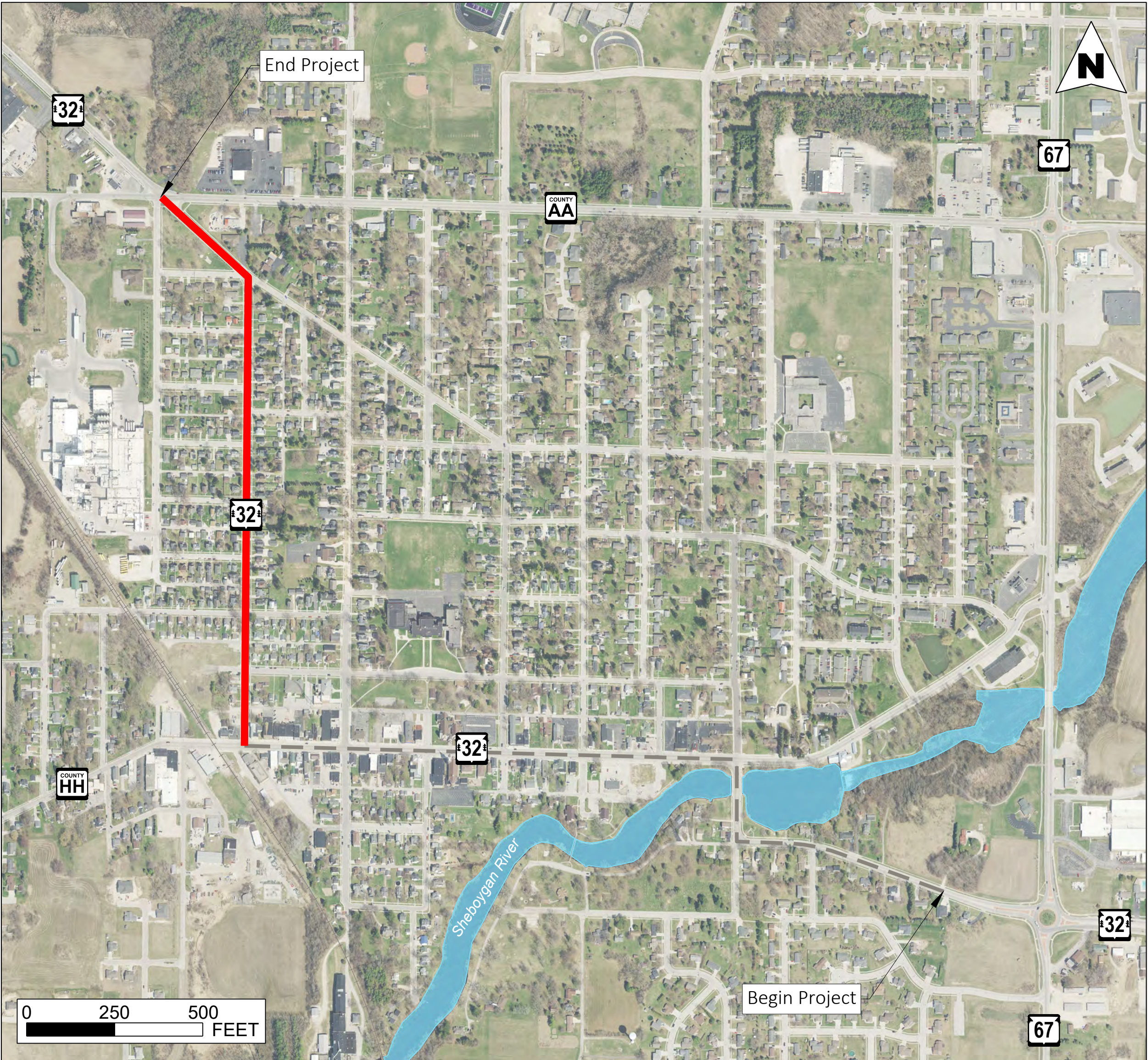
## 7th STREET & CALUMET AVENUE



Existing Typical Section



Potential Typical Section



### DESIGN NOTES

- Asphaltic resurface
- Replacement of all curb ramps
- Existing sidewalk would remain in place (except at curb ramp replacement areas)
- On-street parking would remain in place

### POTENTIAL ENHANCEMENTS (CITY COST)

- Full sidewalk replacement
- Driveway apron replacements
- Continuous and/or decorative street lighting
- Colored or special patterned cross walks