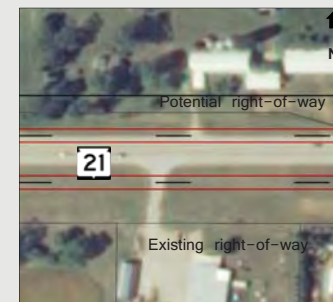
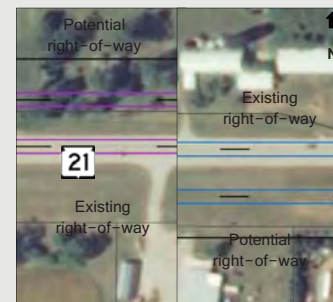
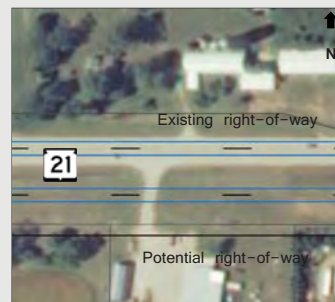


WIS 21 West Corridor Alternative Impacts



	Alternative 1: Expand North	Alternative 2: Expand South	Alternative 3: Hybrid	Alternative 4: Hold Existing Right-of-Way
Additional right-of-way	35 acres	21 acres	14 acres	15 acres
Environmentally sensitive land impacted	1 acres	4 acres	1 acres	1 acres
Relocations required	14	7	6	3
Estimated construction costs	\$23.7 million	\$24.2 million	\$23.7 million	\$30.2 million
Advantages	<ul style="list-style-type: none"> Utilizes previously purchased right-of-way west of Spring Brook Requires the least amount of impacts to DNR lands and wetlands 	<ul style="list-style-type: none"> Utilizes previously purchased right-of-way east of Spring Brook 	<ul style="list-style-type: none"> Utilizes previously purchased right-of-way through the entire corridor Requires the least amount of right-of-way 	<ul style="list-style-type: none"> Utilizes previously purchased right-of-way through the entire corridor Requires the least amount of relocations
Disadvantages	<ul style="list-style-type: none"> Requires the most amount right-of-way and relocations Does not utilize previously purchased right-of-way east of Spring Brook Impacts cemetery land 	<ul style="list-style-type: none"> Requires the most amount of impacts to DNR lands and wetlands Does not utilize previously purchased right-of-way west of Spring Brook 	<ul style="list-style-type: none"> Temporary pavement required for crossovers to maintain traffic during construction 	<ul style="list-style-type: none"> Additional construction costs from not utilizing the existing roadway embankment More difficulty maintaining traffic and drainage during construction Impacts cemetery land

Alternative plan view



Note: Construction costs calculated using 2013 dollars