

# WIS 23 Freeway Designation and Corridor Preservation Plan

Public Hearing for Freeway Designation  
December 13, 2016

County P to WIS 32  
Sheboygan County

WisDOT Project ID 1440-19-00



# Tonight's Agenda

**5 p.m.**

Sign in, pick up handout, review exhibits, discuss project with WisDOT staff.

Verbal and written testimony begins

**5:30 p.m.**

WisDOT Powerpoint presentation

**Approx.  
5:45 p.m.**

WisDOT begins formal hearing presentation

Additional exhibit review and discussion

**7 p.m.**

End of Public Hearing



# Instructions for Providing Testimony

- ▶ Private verbal testimony
  - ▶ Individually with court reporter
  - ▶ Make your statement privately
  - ▶ Available from 5 to 7 p.m.
  - ▶ Wait for an opening, state your name, address, and if applicable, the group, organization, or business you are representing
  - ▶ Then give the court reporter your comments



# Instructions for Providing Testimony

- ▶ Public verbal testimony
  - ▶ Complete a “Registration Slip for Public Verbal Testimony”
  - ▶ Give slip to WisDOT staff
  - ▶ Your name will be called in the order the registration slips are received
  - ▶ When called to the microphone, please state your name, address, and if applicable, the group, organization, or business you are representing
  - ▶ Limit your testimony to 3 minutes to allow time for others to provide testimony



# Instructions for Providing Testimony

## ▶ Written testimony

- ▶ Complete the “Written Testimony Form”
- ▶ Include your name, address, and if applicable, the group, organization, or business you are representing
- ▶ Place the written testimony in comment box on the table tonight or
- ▶ Mail in the written comment form which is pre-addressed and does not require postage
- ▶ Or send written comments via one of the following:

E-mail: [Natasha.Gwidt@dot.wi.gov](mailto:Natasha.Gwidt@dot.wi.gov)

Fax: (920)-492-5640



# Project Overview

- ▶ Public Review
  - ▶ Study findings and exhibits
  - ▶ Obtain comments on preferred mapping alternatives
  - ▶ Obtain comments on freeway designation
- ▶ Public Testimony
  - ▶ Receive verbal and written testimony
  - ▶ WisDOT will review prior to selecting the recommended alternatives



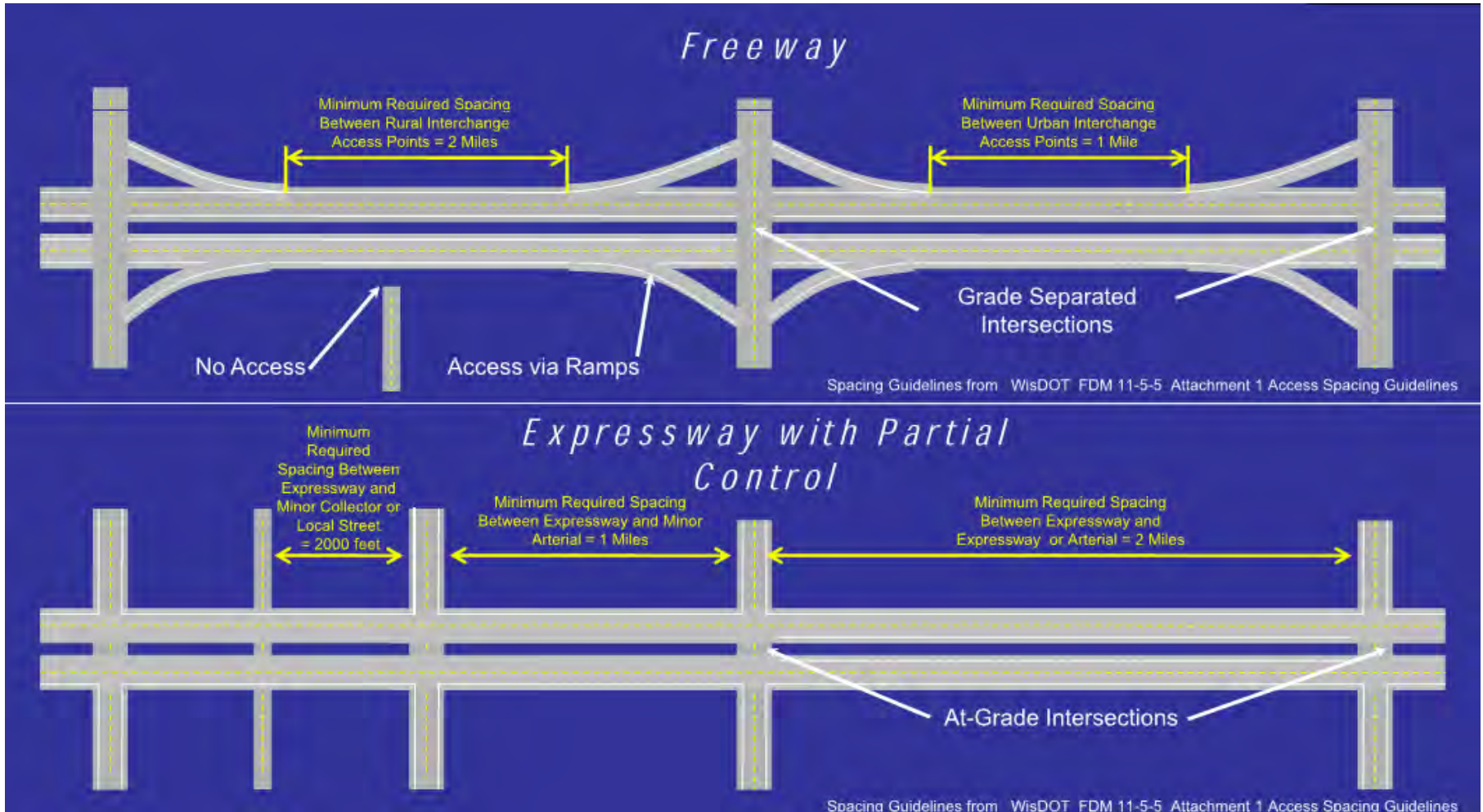
# Description of Hearing Exhibits

- ▶ Display Boards (on easels)
- ▶ Handouts (on tables)
- ▶ Documents Available for Viewing
  - ▶ Draft Environmental Report



# Project Purpose

## What Is a Freeway?





# Project Overview

- ▶ Freeway Designation Goals and Objectives
  - Preserve the public investment in WIS 23 by planning for long-term mobility and safety
  - Map the right of way necessary for conversion of WIS 23 to a freeway
  - Avoid and minimize local and environmental impacts
  - Work in a collaborative manner with local officials, stakeholders and the public throughout the study process
  - Protect multi-modal investments



# Project Overview

## ▶ Public Involvement Overview

- Stakeholder Meeting #1 – April 23, 2008
- Stakeholder Meeting #2 – January 7, 2009
- Public Involvement Meeting #1 – May 5, 2009
- Stakeholder Meeting #3 – September 9, 2009
- Stakeholder Meeting #4 – June 29, 2010
- Public Involvement Meeting #2 – July 19, 2010
- Stakeholder Meeting #5 – January 26, 2011
- Public Involvement Meeting #3 – March 10, 2011
- Stakeholder Meeting #6 – December 12, 2011
- Stakeholder Meeting #7 – May 9, 2016
- Public Involvement Meeting #4 – July 25, 2016



# Project Overview

- ▶ Right of way mapping
  - Map existing property as a future right of way need
  - Requires landowners within the mapped areas to contact the department prior to construction of improvements in mapped areas
  - Helps local governments plan future development
  - Allows a conceptual freeway plan to be developed without scheduling construction projects



# Project Overview

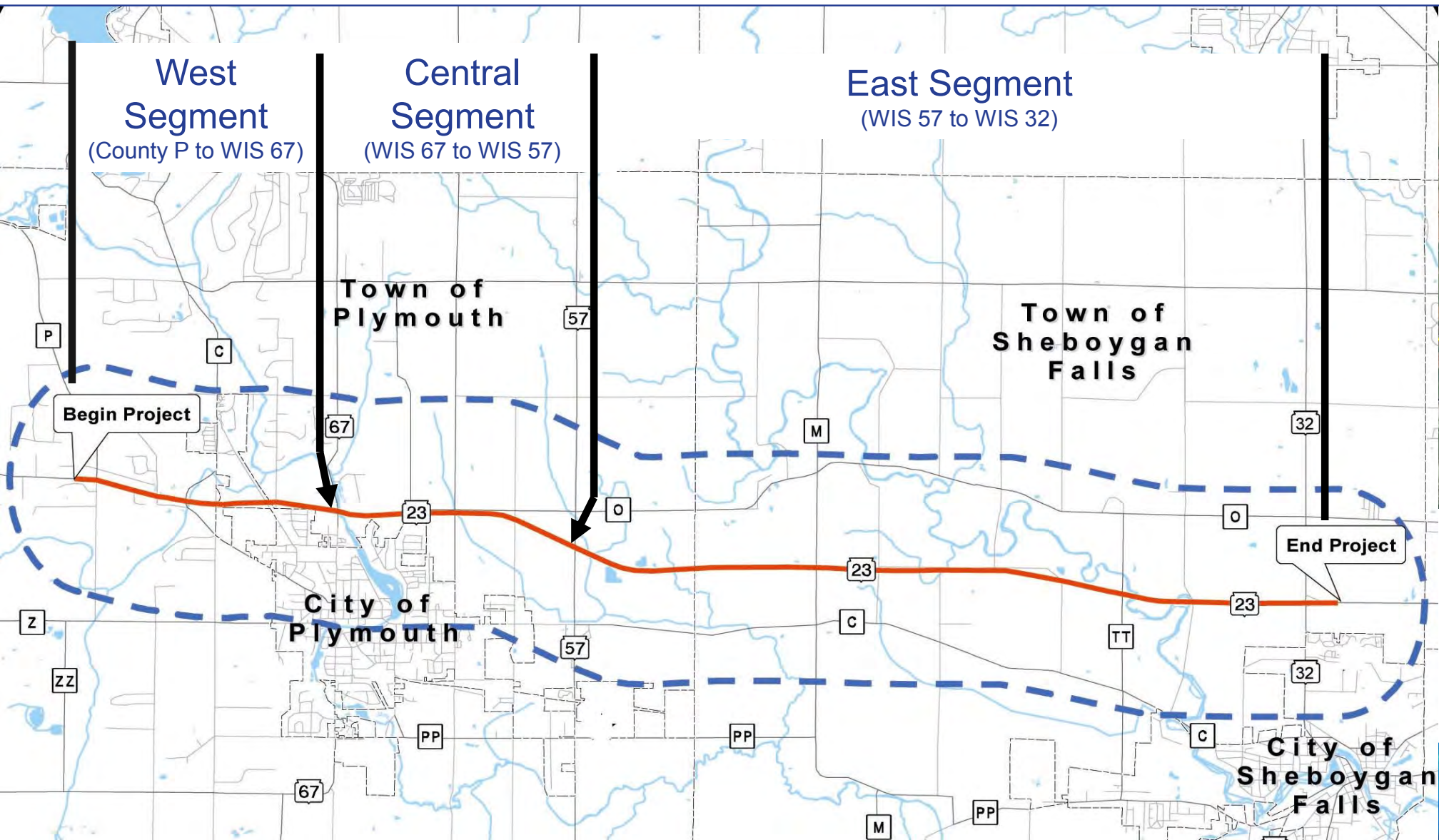
## Multi-Modal

- ▶ Old Plank Road Trail (OPRT)
  - Maintain connectivity
  - Upgrade to current standards where impacted by future projects
  - Signing to Meadowlark Trailhead
- ▶ Sheboygan Memorial Airport
  - Maintain/enhance access at County TT

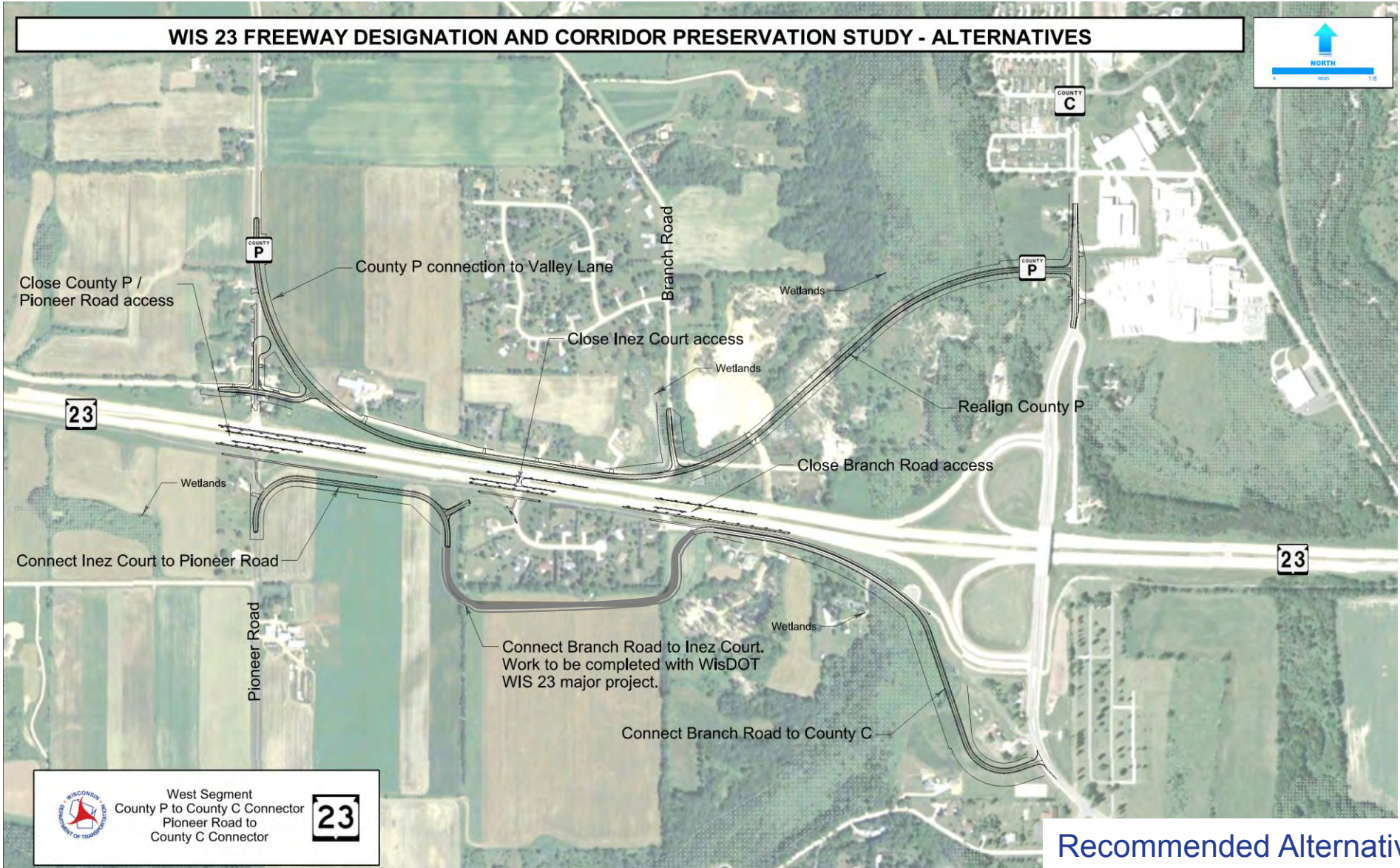


# Study Area

## Freeway Designation Segments



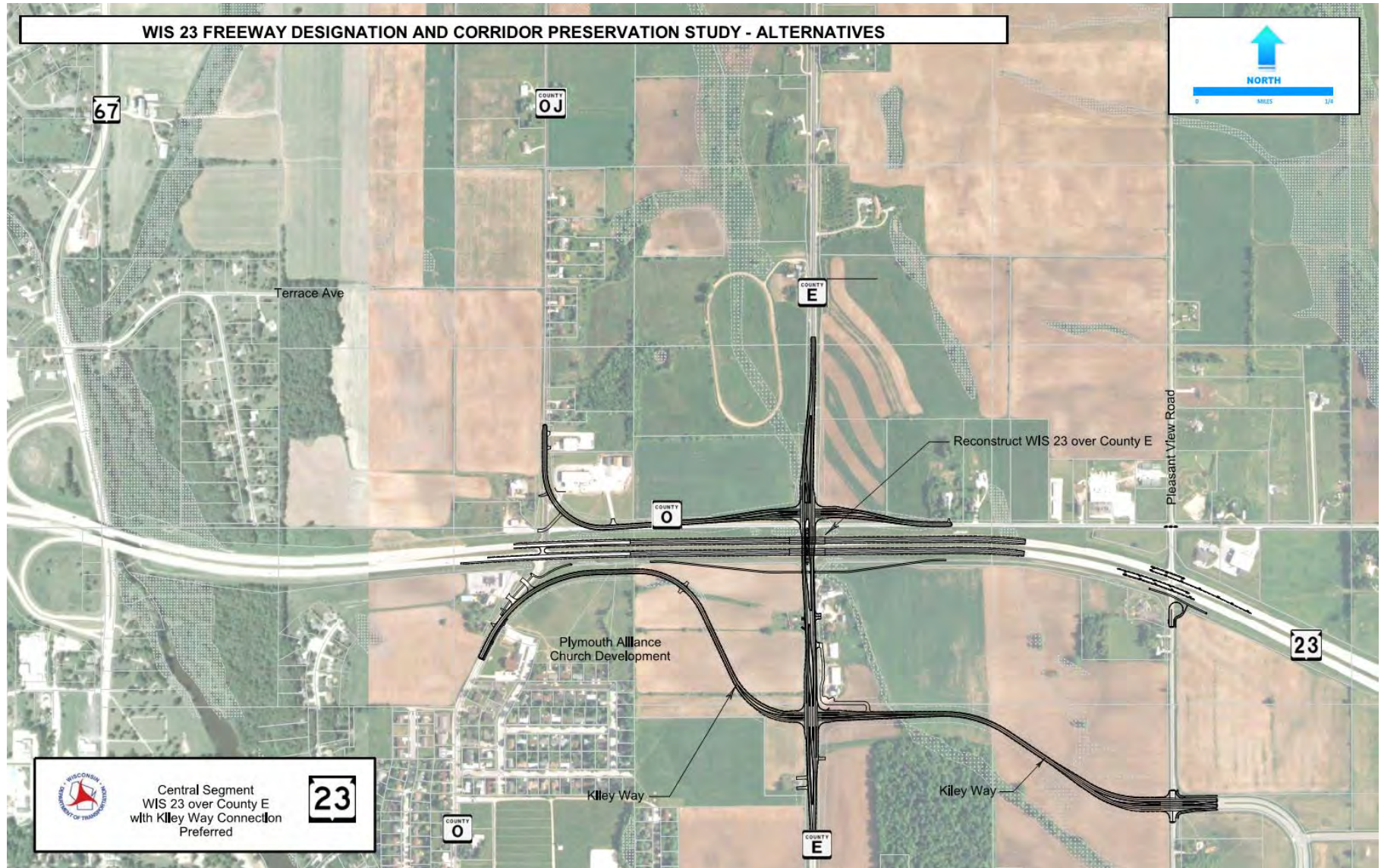
# West Segment Freeway Designation Recommended Alternatives



# West Segment Freeway Designation Recommended Alternatives



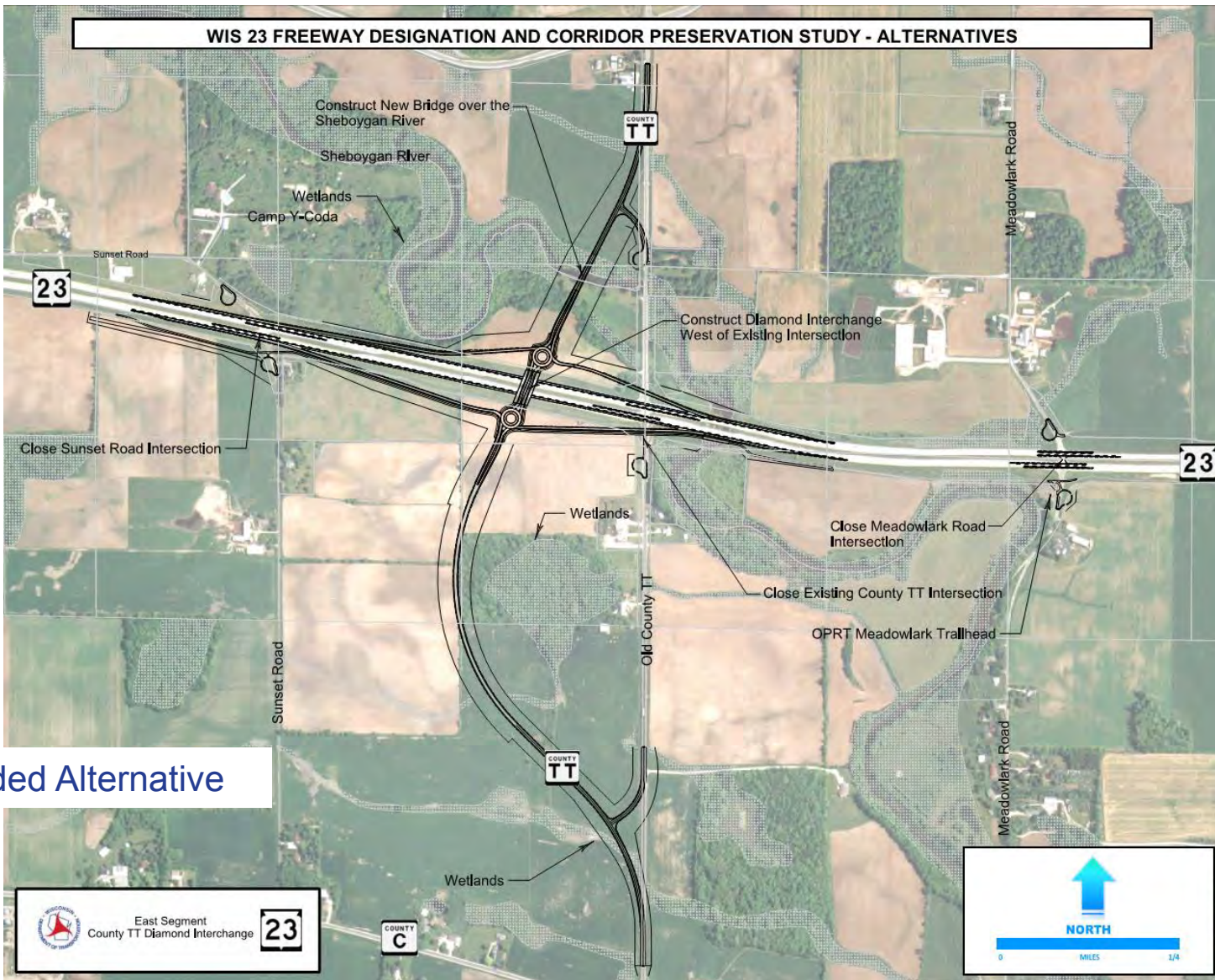
# Central Segment Freeway Designation Recommended Alternatives





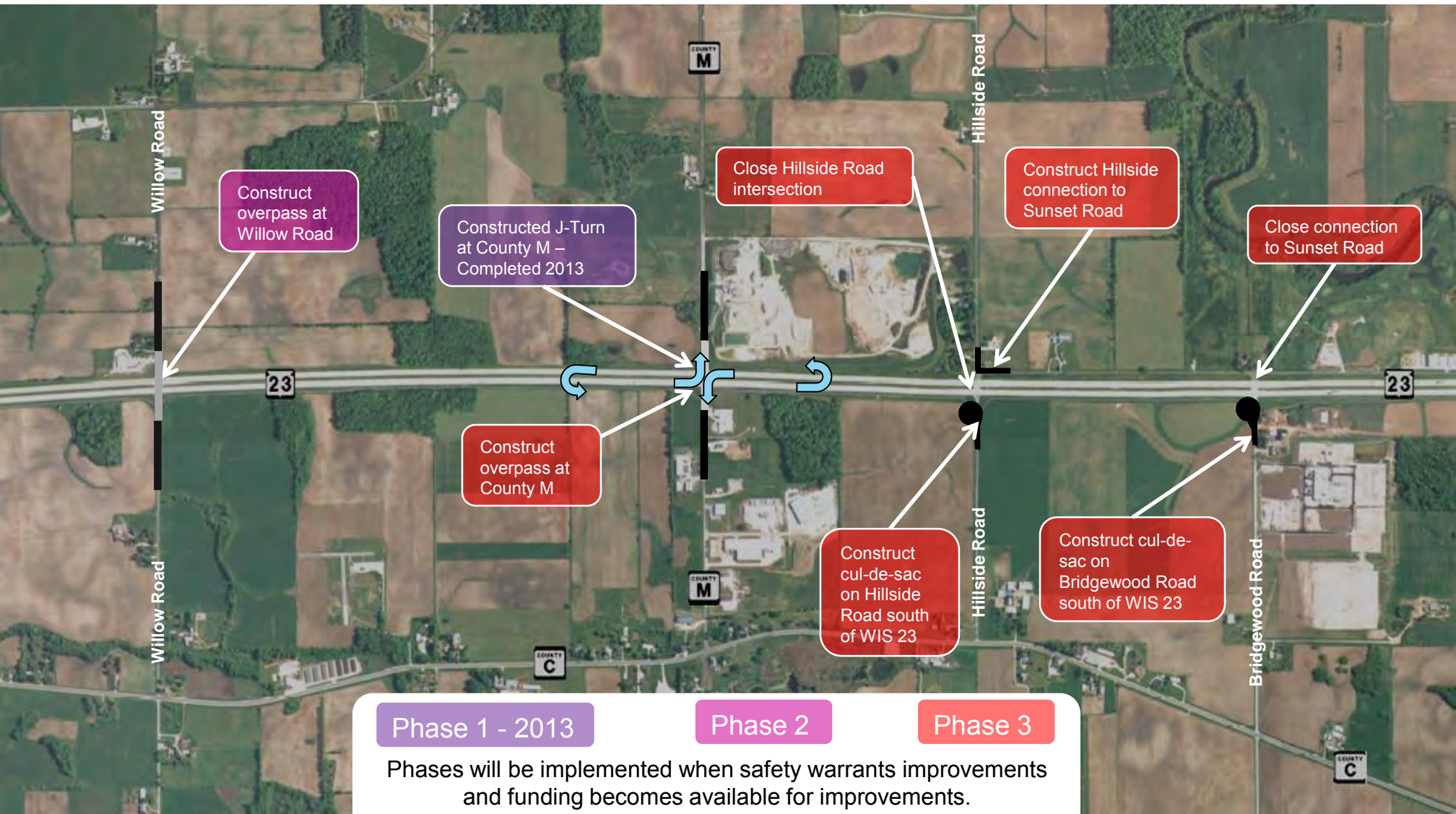


# East Segment Freeway Designation Recommended Alternatives



Recommended Alternative

# East Segment Freeway Designation Recommended Alternatives



Phase 1 - 2013

Phase 2

Phase 3

Phases will be implemented when safety warrants improvements and funding becomes available for improvements.

# Impact Assessment

## West Segment Preferred Alternative

West Segment Preferred Alternative	Unit of Measure	Anticipated Impacts
Project Length	Miles	2.46
Construction	Million \$	5.9
Real Estate	Million \$	0.5
Total Area Converted to ROW	Acres	18.9
Number of Farms Affected	Number	4
Farmland Affected	Acres	7.1
Total Buildings Required	Number	0
Historic Structures in Area of Affect	Number	0
Total Wetlands Filled	Acres	4.9
Stream Crossings	Number	2
Contaminated Sites	Number	3

*\*Cost estimates are based on 2016 dollar values*



# Impact Assessment

## Central Segment Preferred Alternative

Central Segment Preferred Alternative	Unit of Measure	Anticipated Impacts
Project Length	Miles	3.16
Construction	Million \$	18.9
Real Estate	Million \$	0.8
Total Area Converted to ROW	Acres	27.6
Number of Farms Affected	Number	6
Farmland Affected	Acres	21.8
Total Buildings Required	Number	0
Historic Structures in Area of Affect	Number	1
Total Wetlands Filled	Acres	2.6
Stream Crossings	Number	1
Contaminated Sites	Number	1



# Impact Assessment

## East Segment Alternative

East Segment Preferred Alternative	Unit of Measure	Anticipated Impacts
Project Length	Miles	2.5
Construction	Million \$	24.1
Real Estate	Million \$	0.7
Total Area Converted to ROW	Acres	62.6
Number of Farms Affected	Number	19
Farmland Affected	Acres	54.5
Total Buildings Required	Number	0
Historic Structures in Area of Affect	Number	0
Total Wetlands Filled	Acres	3.0
Stream Crossings	Number	2
Contaminated Sites	Number	0

*\*Cost estimates are based on 2016 dollar values*



# Next Steps

**January 10, 2017:** Close of public comments

**Winter 2017:** Record mapping with Sheboygan County

Record notice establishing freeway

Signed Environmental Report placed on project website

Mail Copy of relevant recorded document to affected residents



# Questions?

Questions and answers at this time are not a part of the hearing testimony.





# Project Contacts / Information

- ▶ Natasha Gwidt – WisDOT Project Manager
  - Phone – (920) 492-4125
  - Email – [Natasha.Gwidt@dot.wi.gov](mailto:Natasha.Gwidt@dot.wi.gov)
  
- ▶ Project Information Website
  - <http://www.dot.wisconsin.gov/projects/ne.htm>
    - Go to the WIS 23 Corridor Preservation Study button

