

Public Involvement Meeting

US 63

Cumberland – Spooner

Charrie Lane to Barron/Washburn County Line

Barron County

Spring 2024

Project Team

- Philip Keppers
 - WisDOT Project Manager
- Brett Hollister
 - Consultant Project Manager
- Lena Greenfield
 - WisDOT Real Estate Specialist



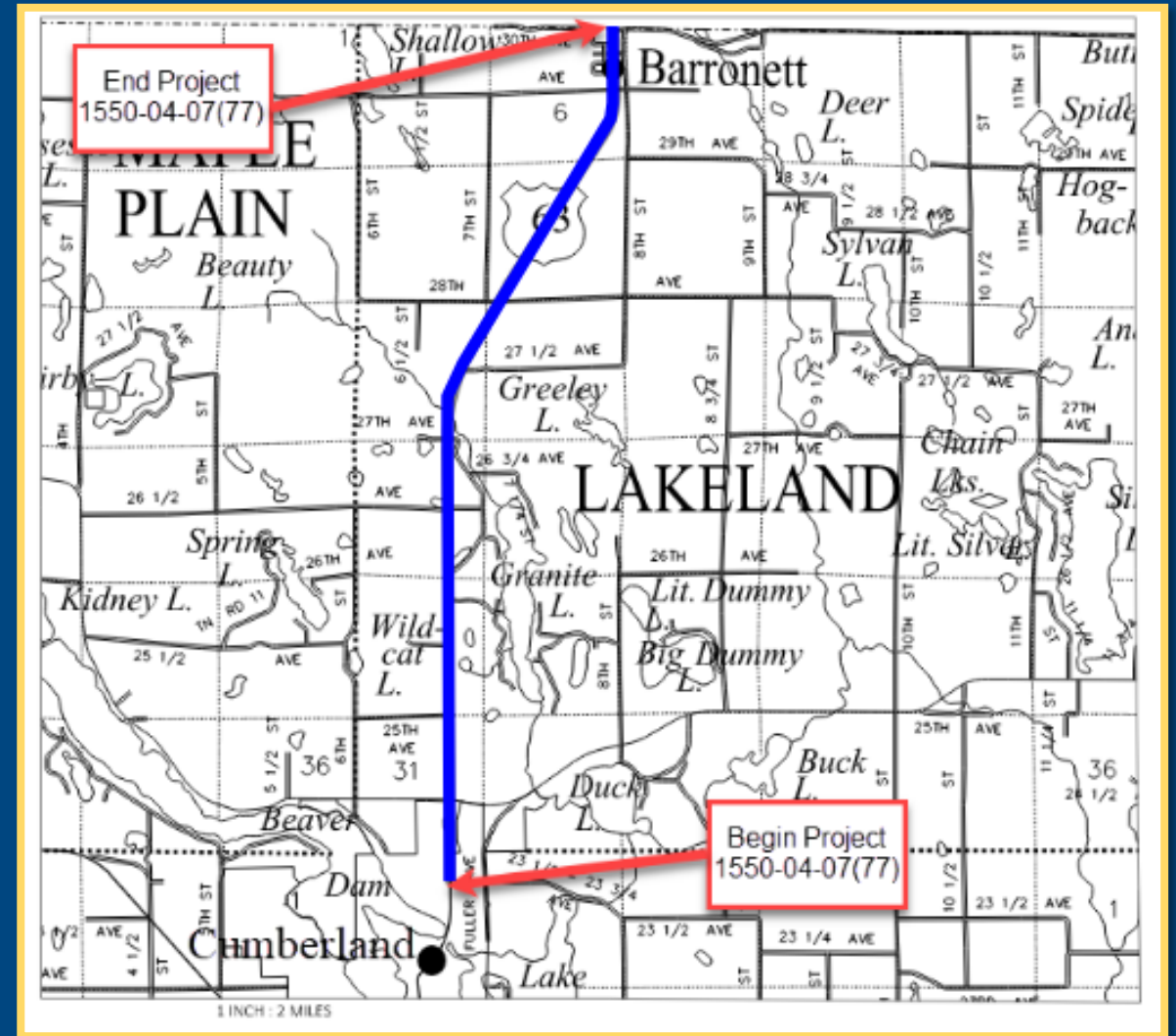
Presentation Agenda

1. Project Location
2. Purpose and Need
3. Proposed Improvements
4. Construction Staging
5. Real Estate
6. Schedule
7. Comments
8. Contact Information



Project Location

- US 63, Barron County
 - Begins: Charrie Lane in the city of Cumberland
 - Ends: Washburn County line in the Barron County town of Lakeland.
 - Project ID: 1550-04-07



Purpose and Need

- Purpose

- To maintain a safe and efficient transportation system by addressing deficiencies of the current roadway and upgrading existing sidewalk curb ramps

- Need

- Deteriorating pavement
- Non-compliant sidewalk curb ramps



Proposed Improvements

- Resurface US 63 with asphalt pavement
- Resurface parking lanes within Barronett
- Reconstruct curb ramps
- Evaluate access
- Clean culverts
- Install pavement marking and centerline rumble strips



Construction Staging

- US 63 will be open to through traffic during construction, but motorists will encounter:
 - Single-lane closures controlled by flagging operations
 - Temporary driveway closures for construction operations



Real Estate

- Real estate acquisition for US 63 improvements
 - Minor acquisition, both permanent and temporary
- Real estate acquisition process
- Contact: Lena Greenfield, WisDOT Real Estate Specialist
 - (715) 392-7934
 - Lena.Greenfield@dot.wi.gov



Schedule

- Virtual Public Involvement Meeting April 2024
- Preliminary Plans May 2024
- Real Estate Plat August 2024
- Real Estate Acquisition September 2024
- Final Plans August 2025
- Construction Summer 2026



Comments

- Share your comments or concerns by Friday, April 19, 2024, by:
 - Printing the comment form at:
 - <https://wisconsindot.gov/Pages/projects/by-region/nw/us63barronco/default.aspx>
 - Mailing it to:
 - Wisconsin Department of Transportation
 - Attn.: Philip Keppers
 - 1701 N. 4th St.
 - Superior, WI, 54880
 - Emailing or calling the project contacts



Contact Information

- Philip Keppers, WisDOT Project Manager
 - (715) 395-3027
 - Philip.Keppers@dot.wi.gov
- Brett Hollister, Consultant Project Manager
 - (715) 723-6200
 - Bhollister@sehinc.com
- Lena Greenfield, WisDOT Real Estate Specialist
 - (715) 392-7934
 - Lena.Greenfield@dot.wi.gov

