

US 63, Cumberland

**Resurfacing Project From West Junction of WIS 48
to Charrie Lane**

Public Involvement Meeting

Winter 2021-2022

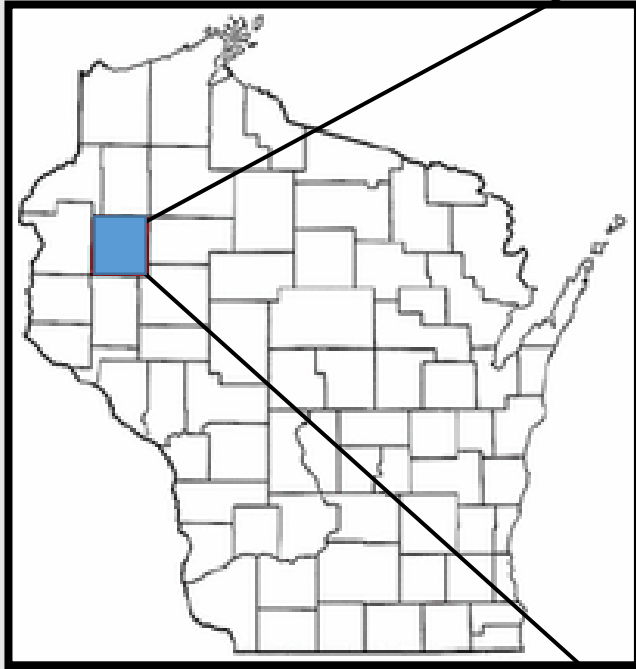


Meeting Overview

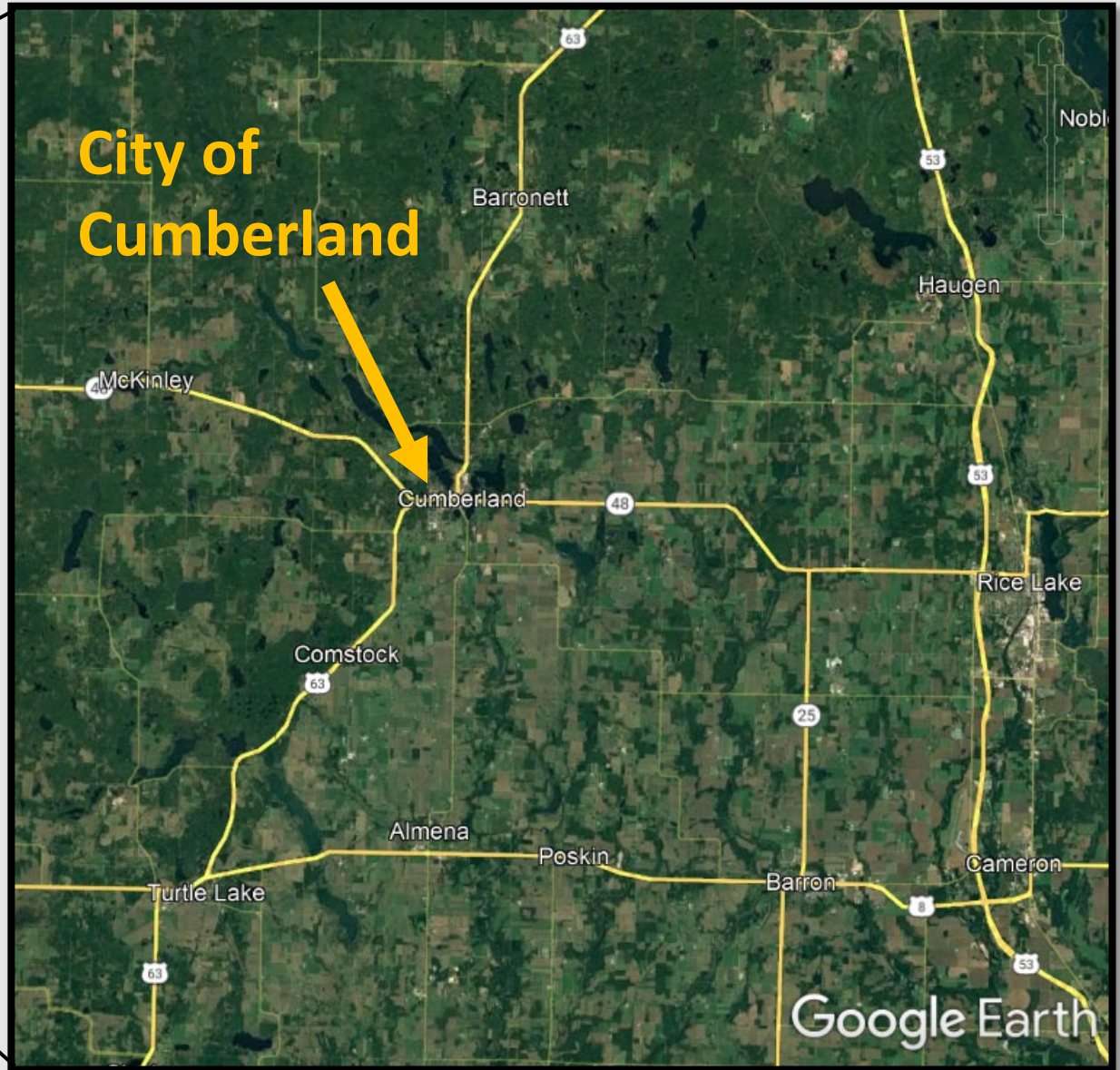
- Project Location
- Project Purpose
- Project Need
- Proposed Work
- Access Management
- Design Considerations
- Real Estate
- Environmental Considerations
- Traffic Impacts
- Cost



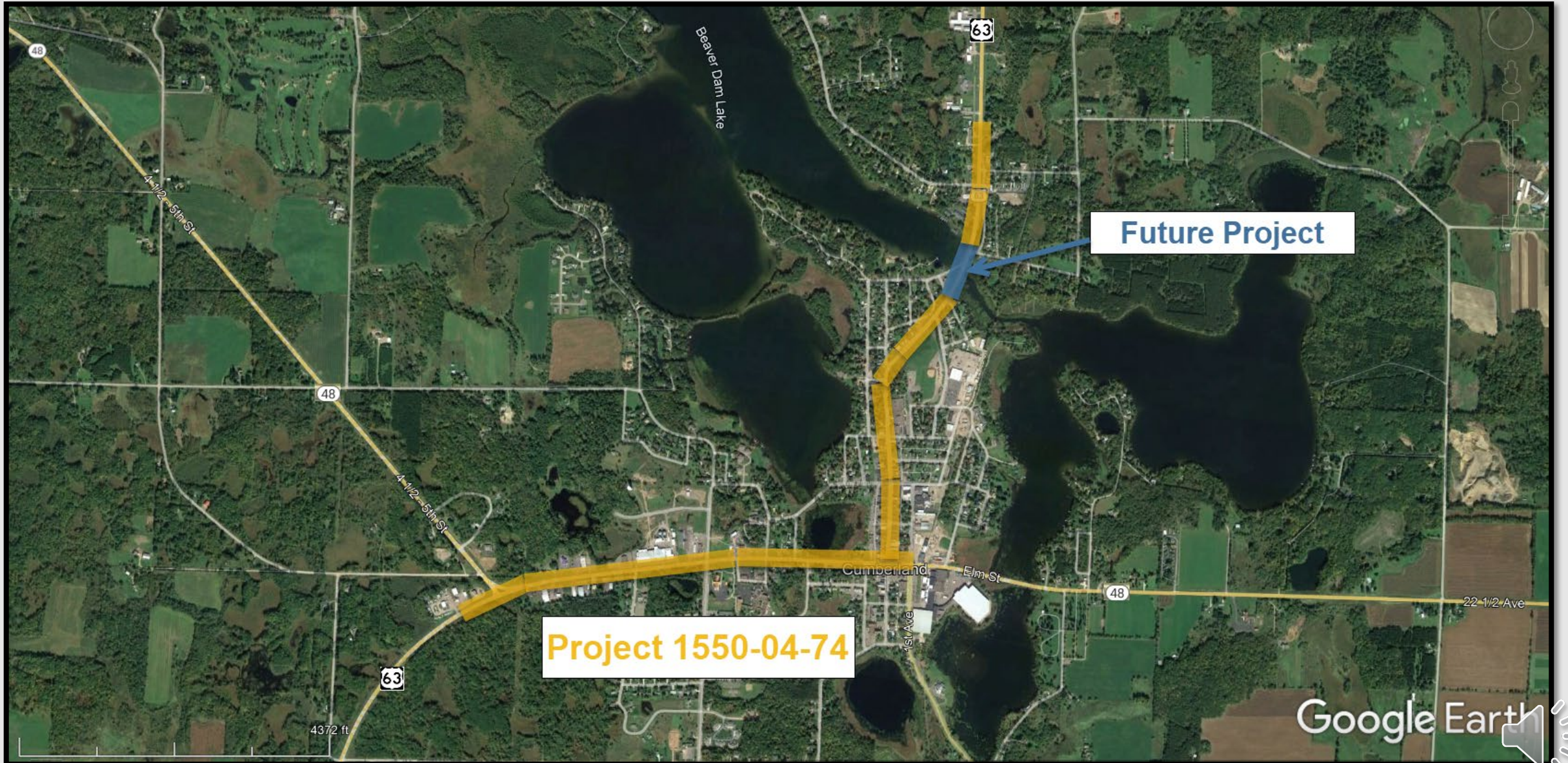
Project Location



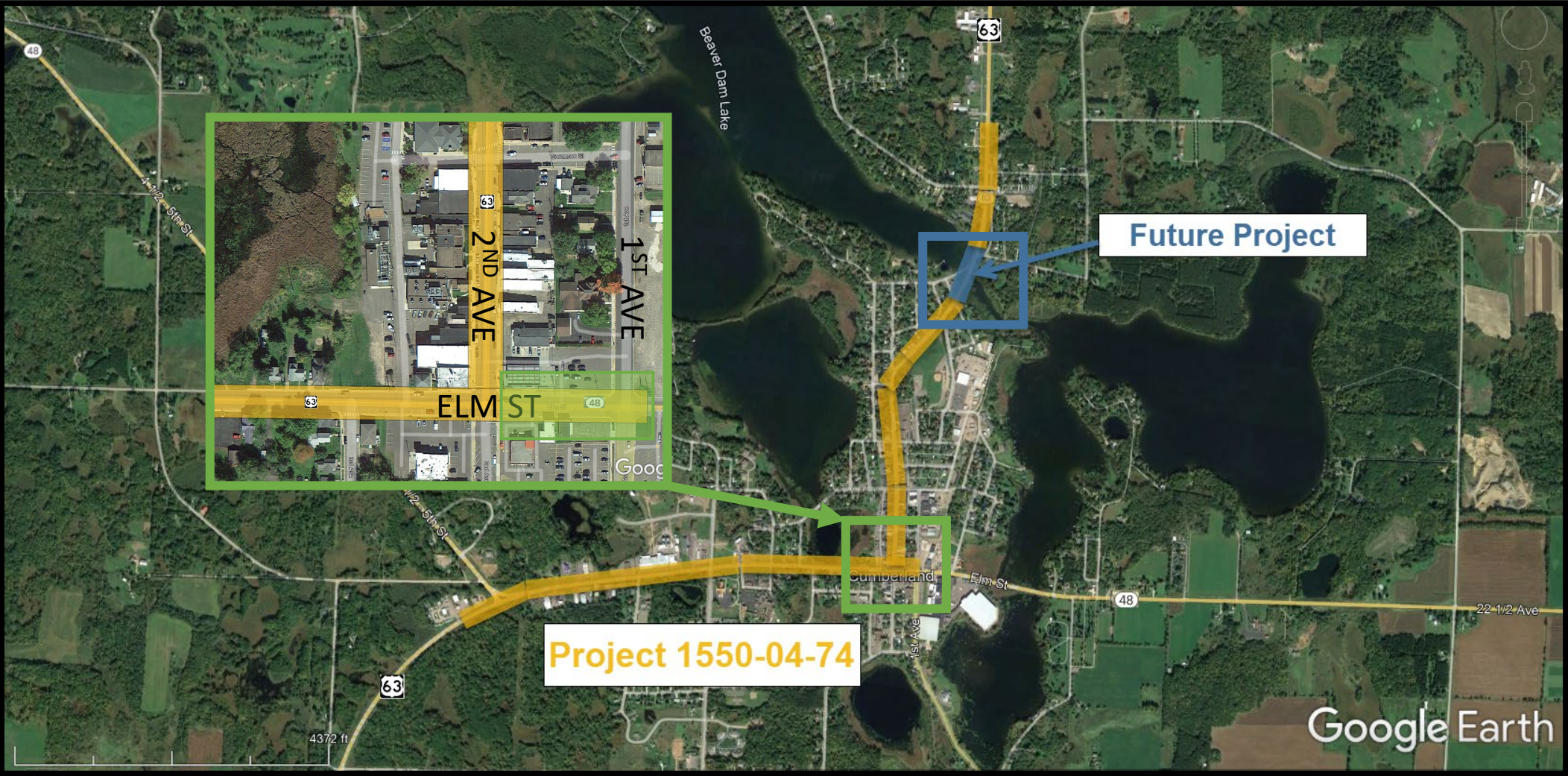
Barron County



Project Location



Project Location



Future Project

- Beaver Dam Lake Structure Replacement
 - Begins at Arcade Avenue
 - Ends at Nedvidek Street



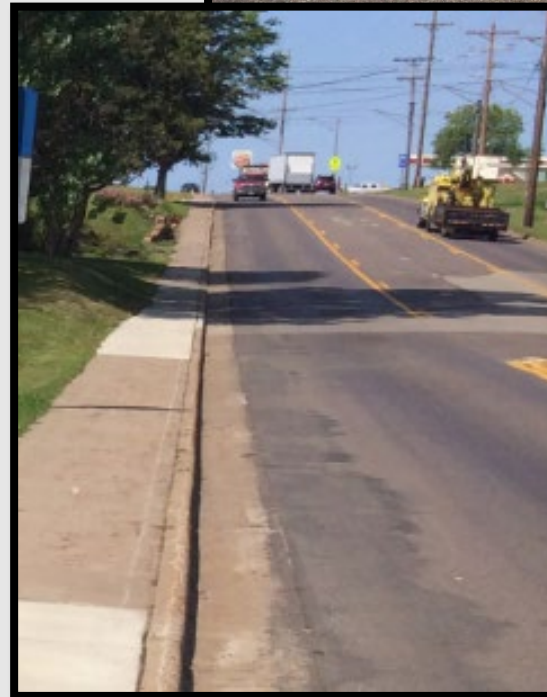
Project Purpose

- To preserve and extend service life of roadway
- Provide Americans With Disabilities Act-compliant curb ramps
- Maintain sanitary manholes and existing storm sewer facilities



Project Need

- Existing roadway surface showing signs of increasing wear
- Non-compliant curb ramps present
- Deterioration of curb and gutter and utility features



Proposed Work

- Remove and replace 3 ½ inches of asphalt
- Treat curb and gutter
- Replace curb ramps



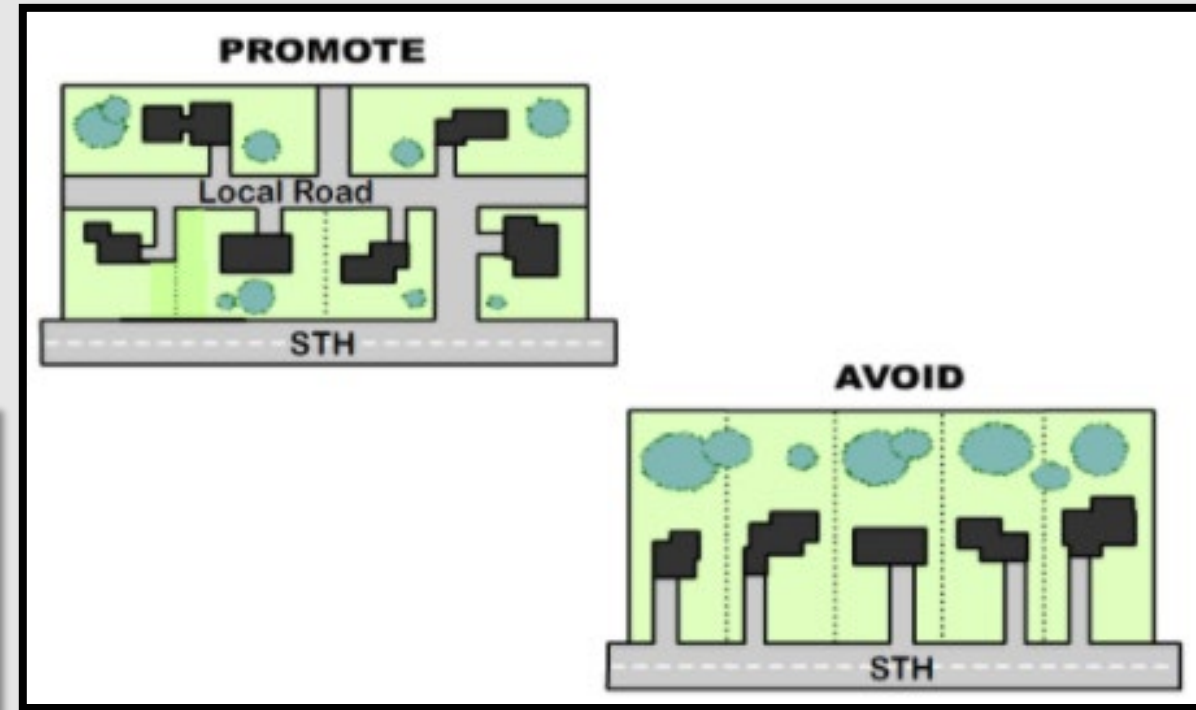
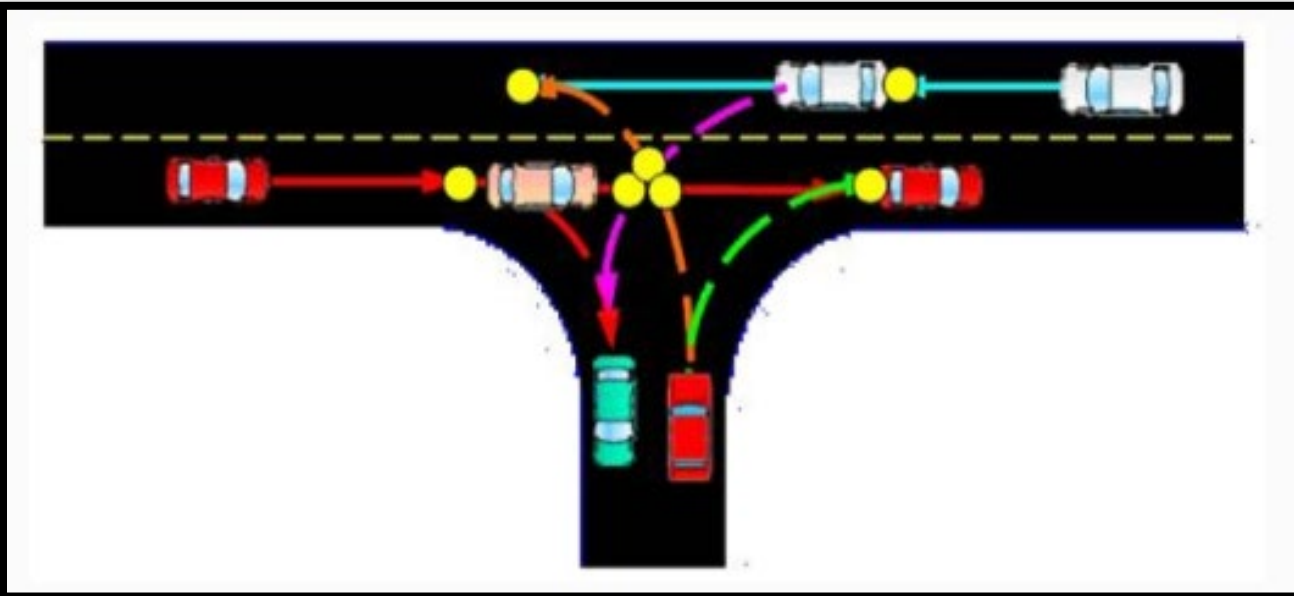
Proposed Work

- Make select sidewalk and driveway repairs
- Improve sanitary manholes
- Adjust electric pull boxes and water valves



Access Management

Goal: To get vehicles on/off the roadway safely and efficiently.



Design Features and Considerations

- Adding curb ramp bump-outs
- Marking bicycle lanes



Design Features and Considerations

Two-Way Turn Lane (TWTL) Extension

From
To





Real Estate

- Temporary Limited Easement (TLE)
 - Example: Shallow grading behind sidewalks, driveway tie-ins
- Permanent acquisition (FEE)
 - Example: Right-of-way line straddles sidewalk



Environmental Considerations

- Historical and Architectural





Project Information

- Design website
 - <https://wisconsindot.gov/Pages/projects/by-region/nw/us63cumberland/default.aspx>
- Preliminary concept plans
- Historical exhibits





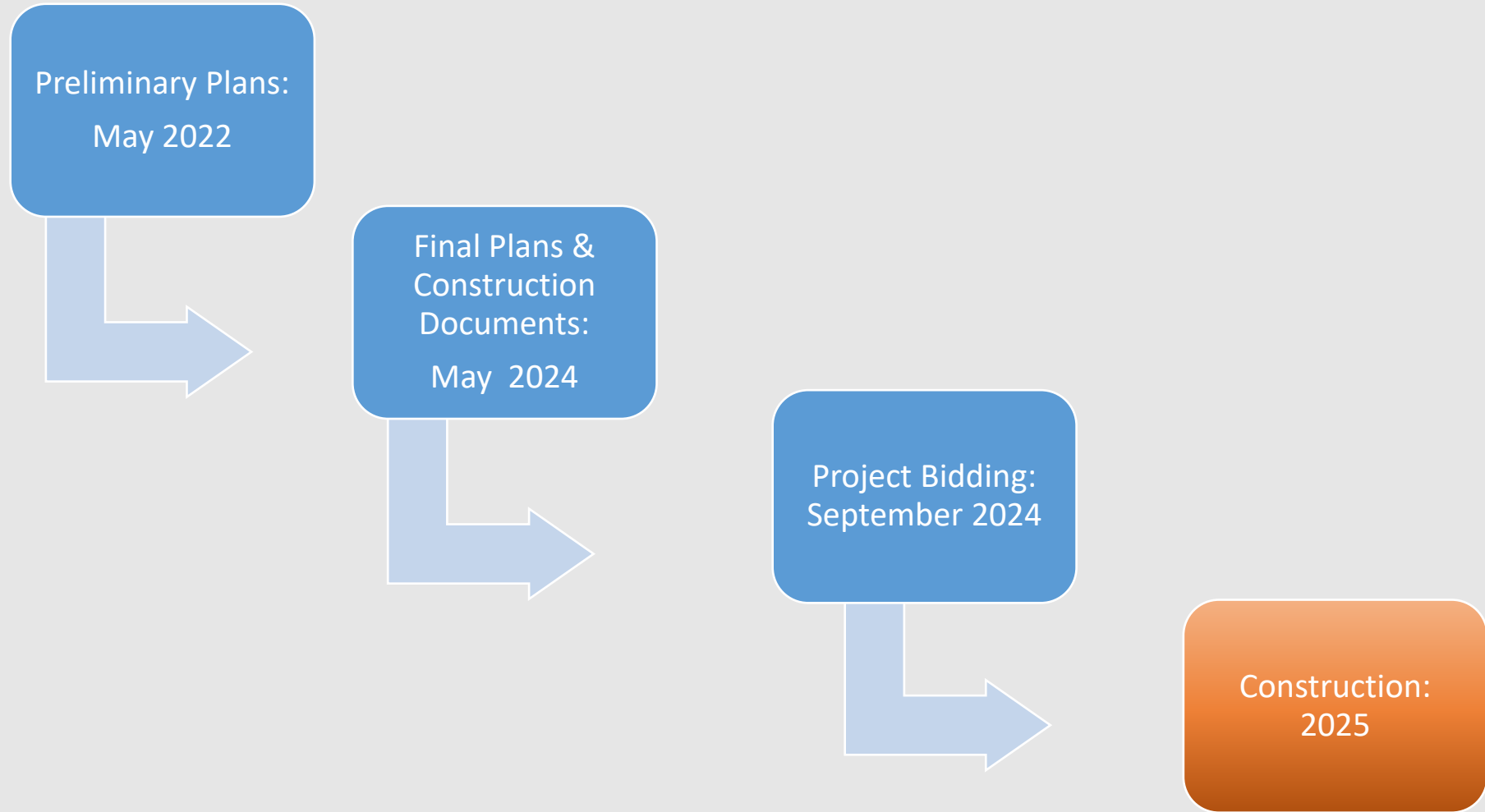
Traffic Impacts

- Temporary lane closures
- Temporary sidewalk closures
- Temporary driveway closures





Project Schedule



Cost

- Federal
- State
- Local (City of Cumberland)



Business Coordination

We're In This Together!

- Visit: wisconsindot.gov/together
 - Tips, tools and resources
 - New (2021) business coordination guide
- Project team is here to help
 - What information would help you ...
 - Inform customers about the project?
 - Coordinate with suppliers?
 - Communicate with employees?



Project Communication

- Press Releases
- Project Website
- Public Involvement Meetings
- Public Outreach



**Public
comment
period ends
Jan. 14, 2022**

Project Contacts

- Nick Pitsch, WisDOT Project Manager
 - (715) 225-1271
 - Nicholas.Pitsch@dot.wi.gov
- Vidar Sanchez, WisDOT Project Leader
 - (715) 395-3034
 - Vidar.Sanchez@dot.wi.gov

