



# Project: 1050-00-30/60 (WIS 29) Chippewa Falls - Abbotsford

**Nick Pitsch**

WisDOT- Project Manager

Updated Project Presentation

Winter 2023-24

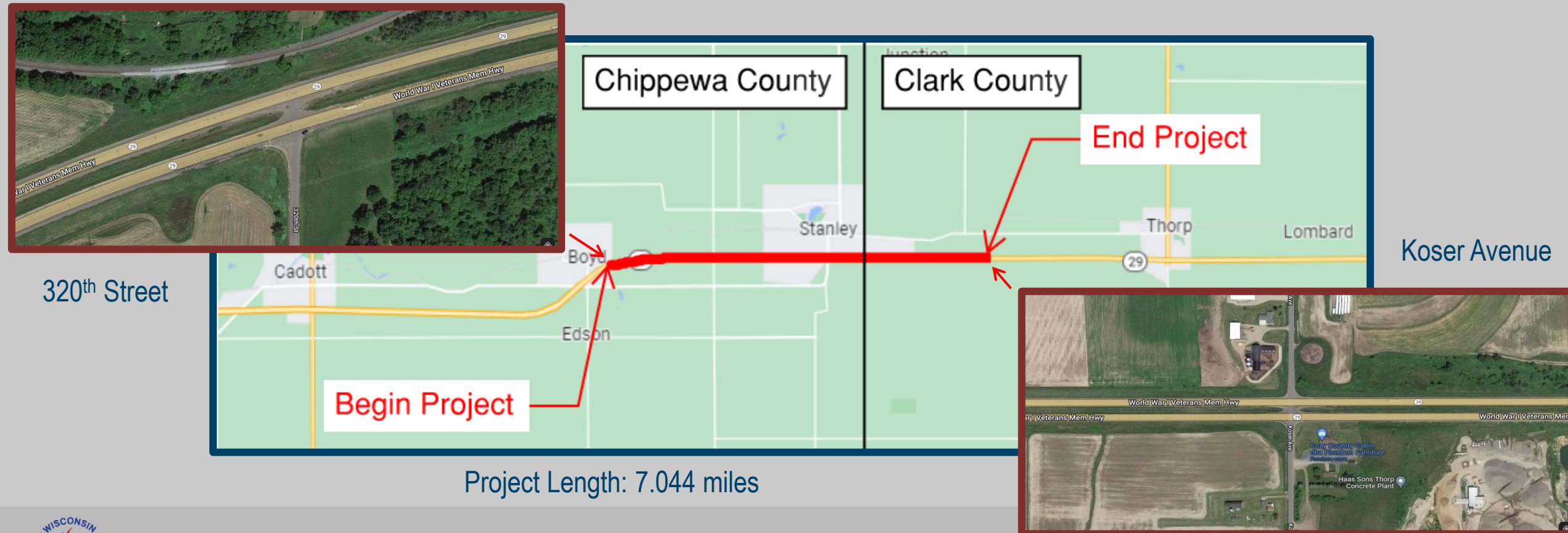
# Agenda

- Project Location
- Purpose and Need
- Proposed Improvements
- Proposed Design Overview
- Traffic Control
- Upcoming Schedule
- Project Contacts
- Public Comment



# Project Location

- Chippewa and Clark counties: 320<sup>th</sup> Street to Koser Avenue



# Purpose and Need

- Purpose of the project
  - Maintain a safe highway system for the traveling public
- Need for the project
  - Deteriorated pavement
  - Substandard guardrail
  - Deteriorated structures





# Purpose and Need

- Deteriorated pavement
- Guardrail that doesn't meet current standards





# Purpose and Need

- Deteriorating features on structure B-06-0029





# Proposed Improvements

- On WIS 29:
  - Repairing deteriorated sections of concrete pavement
  - Placing a 3.75-inch asphaltic pavement overlay on the highway
  - Replacing guardrail, curb and gutter
  - Repairing structure B-06-0029
  - Cleaning ditches and culverts



# Proposed Improvements

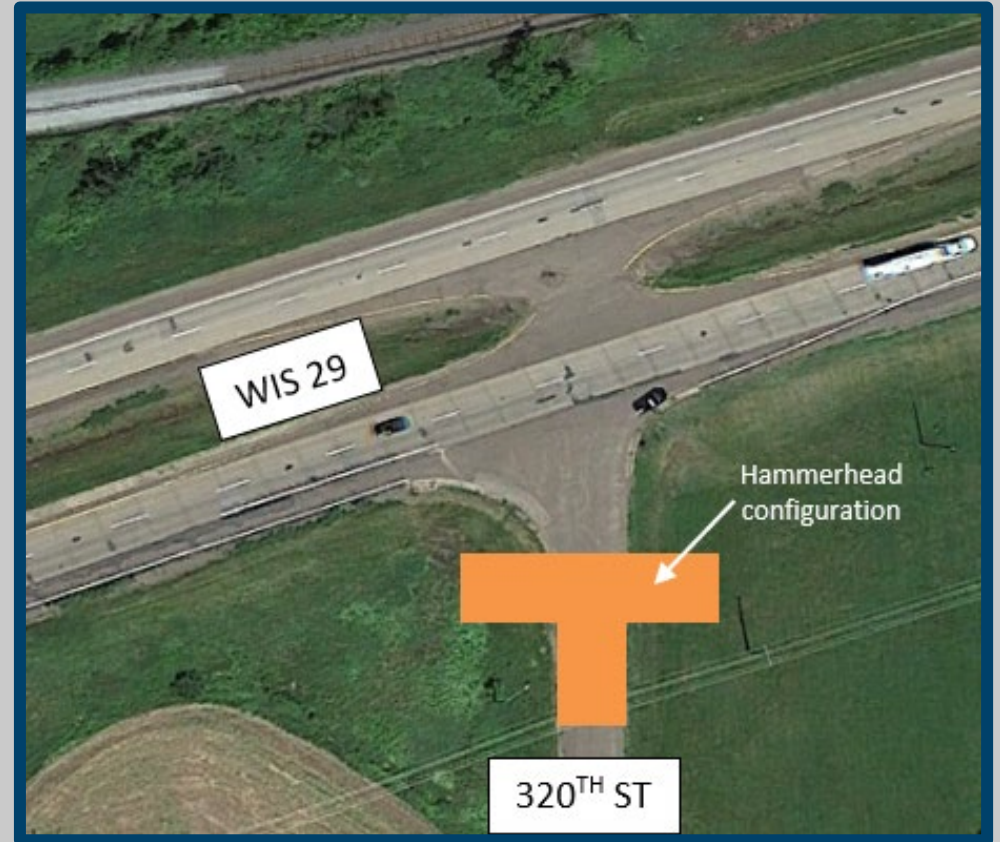
- At the WIS 29/County H interchange in Stanley:
  - Removing 1.25 inches of pavement and placing 2.25 inches of asphaltic pavement on the interchange on-/off-ramps
  - Removing 2.25 inches of pavement and placing 2.25 inches of asphaltic pavement on County H between the west- and eastbound WIS 29 ramps





# Proposed Improvements – Updated

- Closing and removing access at the 320th Street/WIS 29 intersection per town of Delmar's request:
  - Remove asphalt
  - Construct turnaround for emergency vehicles
  - Modify ditching
  - Place signage
  - Adjust pavement markings



# Proposed Design Overview

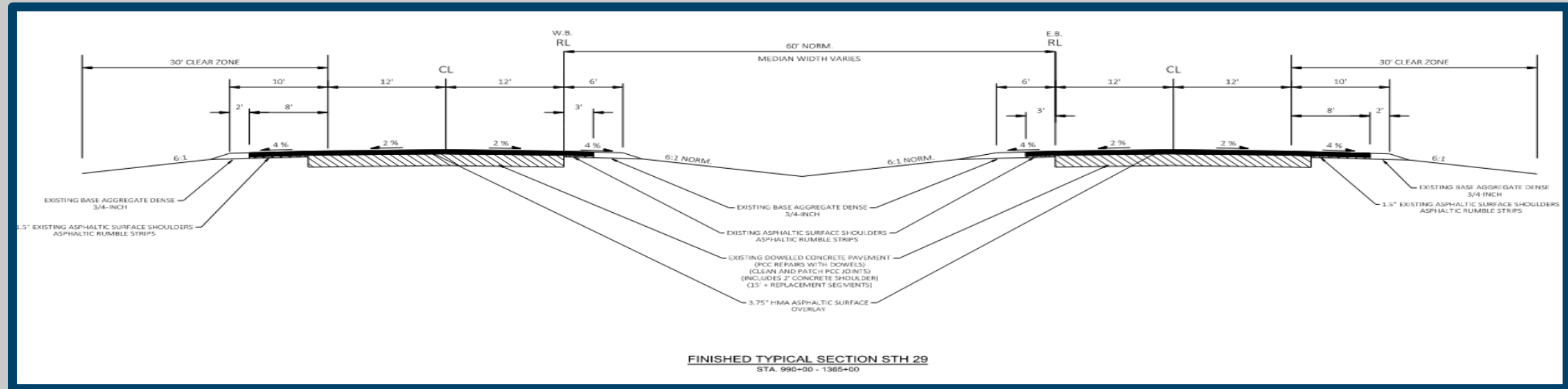
## Typical Proposed Section – WIS 29

- Pavement

- 3.75-inch asphalt overlay

- Shoulders

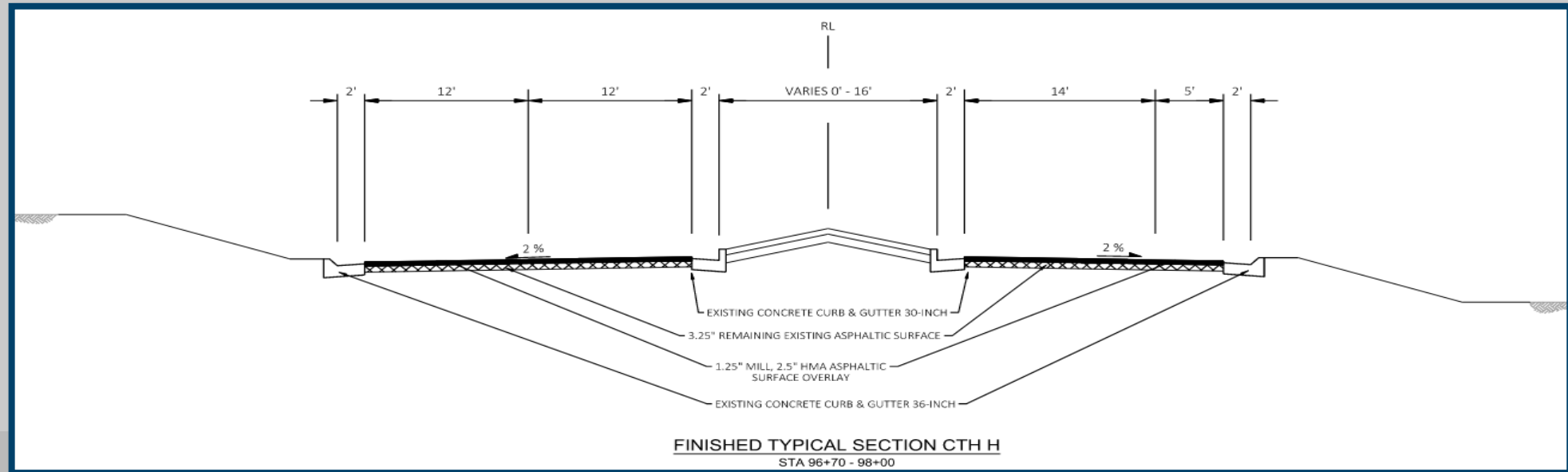
- Inside: 3 feet paved, 3 feet gravel
- Outside: 8 feet paved and 2 feet gravel



# Proposed Design Overview

## Typical Proposed Section – County H

- Pavement
  - Remove 2.25 inches
  - Place 2.25 inches
- Shoulders
  - Match existing
  - 0 to 5 feet paved





# Proposed Design Overview

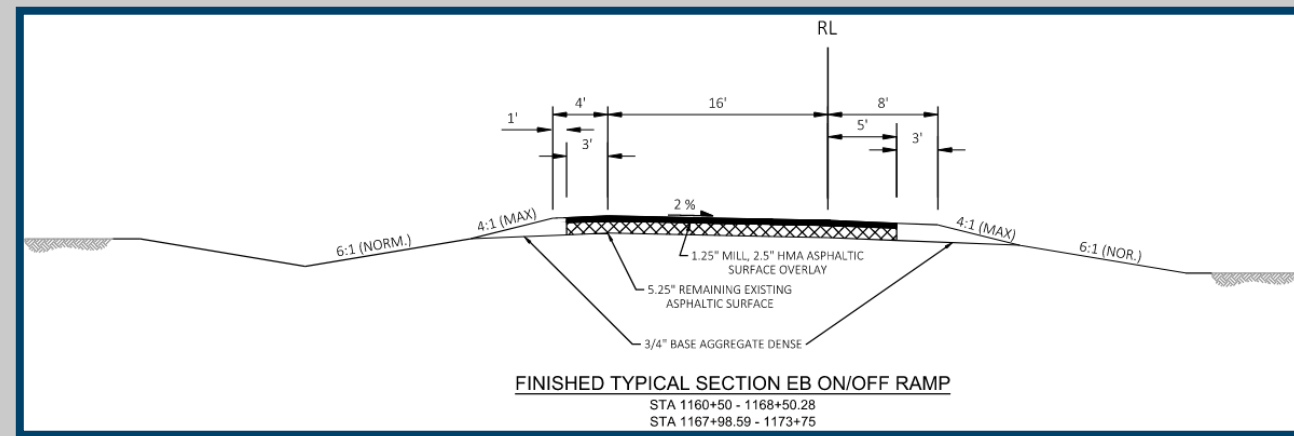
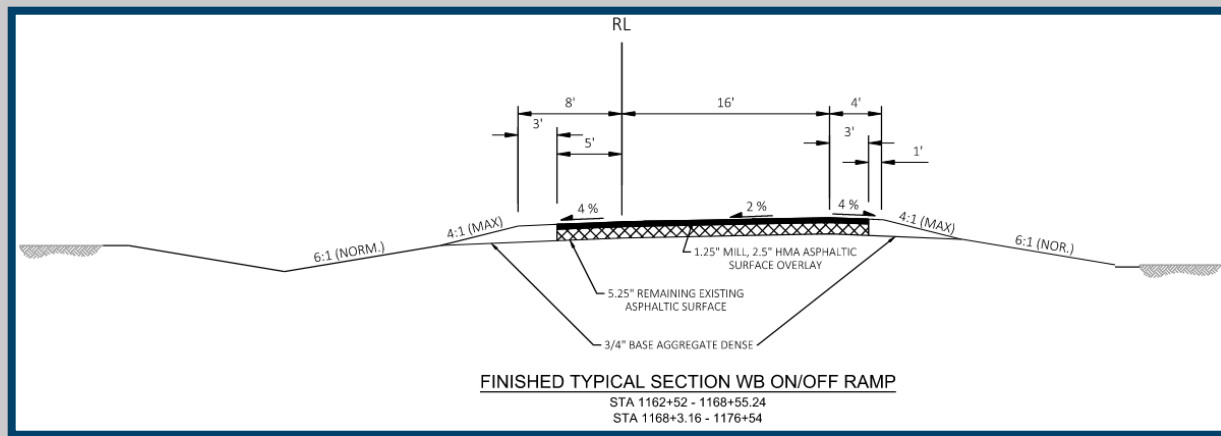
## Typical Proposed Section – County H Ramps

- Pavement

- Remove 1.25 inches
- Place 2.25 inches

- Shoulders

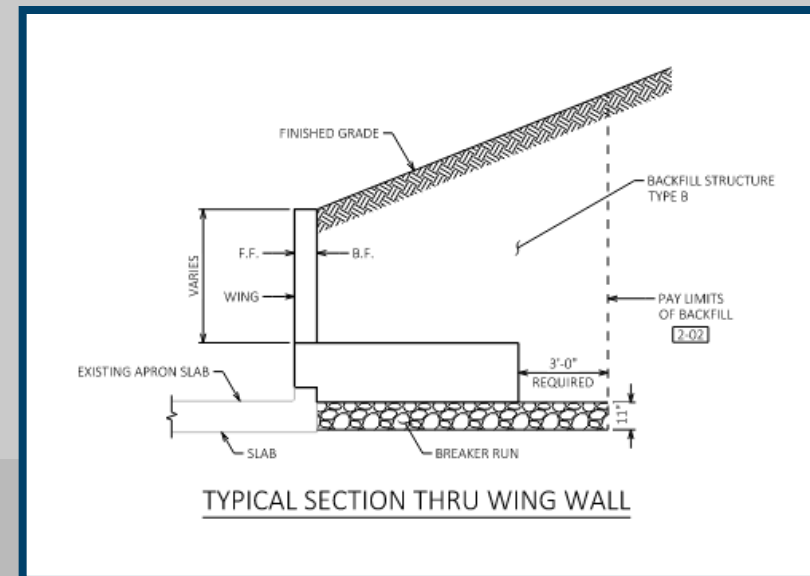
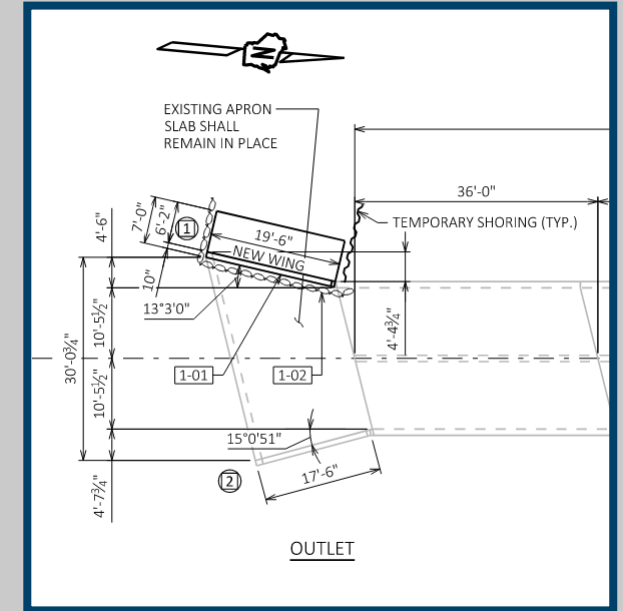
- Match existing
- Paved: 3 to 5 feet
- Unpaved: 1 to 3 feet



# Proposed Design Overview

## Structure B-06-0029

- Location
  - 0.2 mile east of 320<sup>th</sup> Street
- Proposed work:
  - Make concrete surface repairs
  - Replace the southwest wing wall



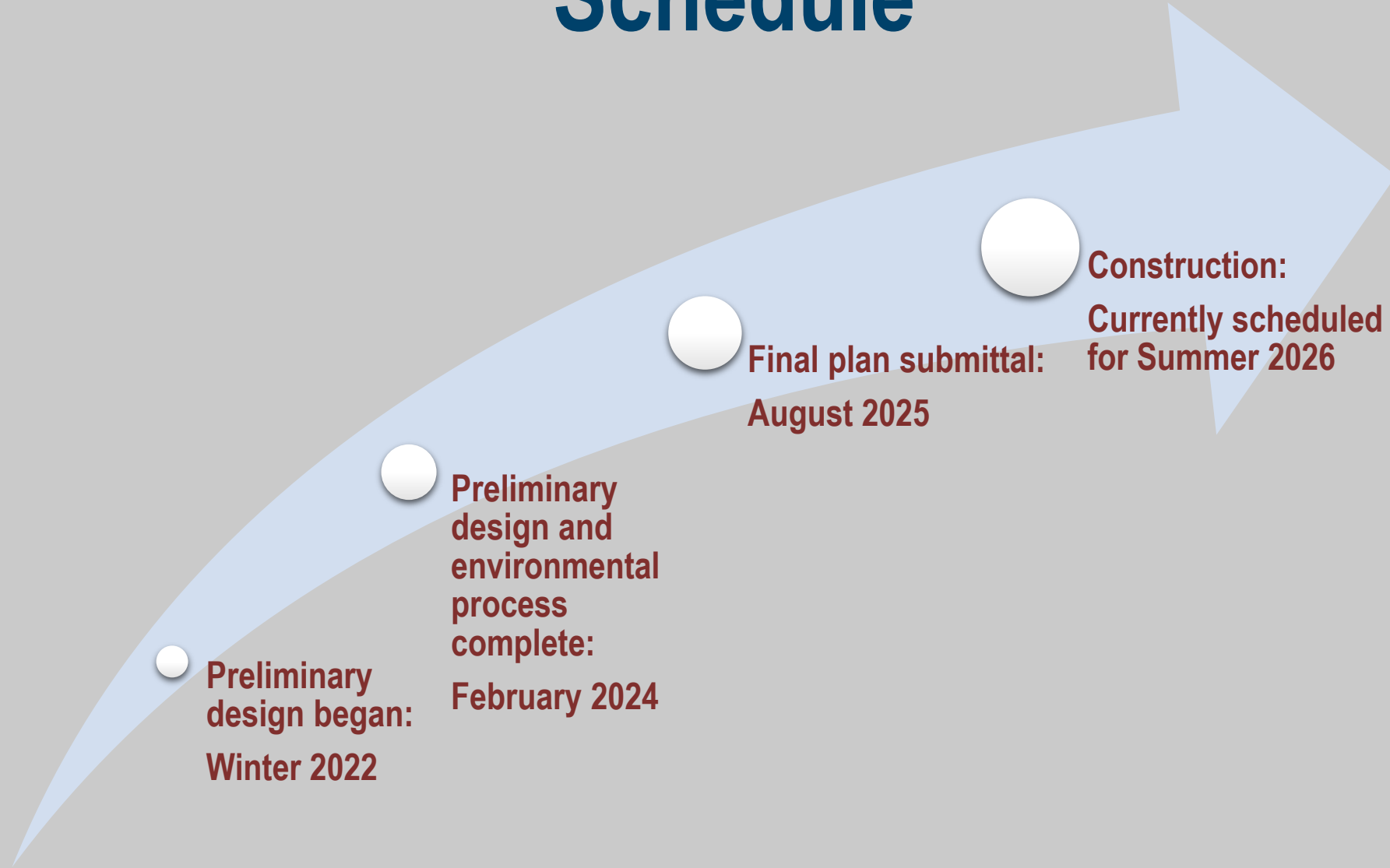
# Traffic Control

- WIS 29 will remain open to traffic, but motorists will encounter:
  - Single-lane closures
  - Speed limit reduction during roadway improvements
- County H ramps will be closed half at a time.
- County H will remain open, but motorists will encounter lane closures controlled by flagging while work is done.





# Schedule



# Project Contacts - Updated

- WisDOT Project Manager Nicholas Pitsch, P.E.
  - (715) 225-1271, [nicholas.pitsch@dot.wi.gov](mailto:nicholas.pitsch@dot.wi.gov)
- WisDOT Project Supervisor: Jim Koenig, P.E.
  - (715) 838-8391, [james.koenig@dot.wi.gov](mailto:james.koenig@dot.wi.gov)
- Consultant Project Manager Kevin Meyer, P.E.
  - (715) 299-1894, [kmeyer@correinc.com](mailto:kmeyer@correinc.com)



# Public Comment

- WisDOT is accepting public comments on the proposed project through Jan. 15, 2024, by:
  - Email: [nicholas.pitsch@dot.wi.gov](mailto:nicholas.pitsch@dot.wi.gov)
  - Mail: Wisconsin Department of Transportation  
718 W. Clairemont Ave.  
Eau Claire, WI 54701  
Attn.: Nick Pitsch

