

# Public Involvement Meeting

## WIS 35

**Siren – Danbury**  
County K South to Yellow River Bridge

**Summer 2024**



# Agenda

- Project Location
- Purpose and Need
- Proposed Improvements
- Traffic Impacts
- Real Estate
- Schedule
- Public Comments
- Project Contacts



# Project Location

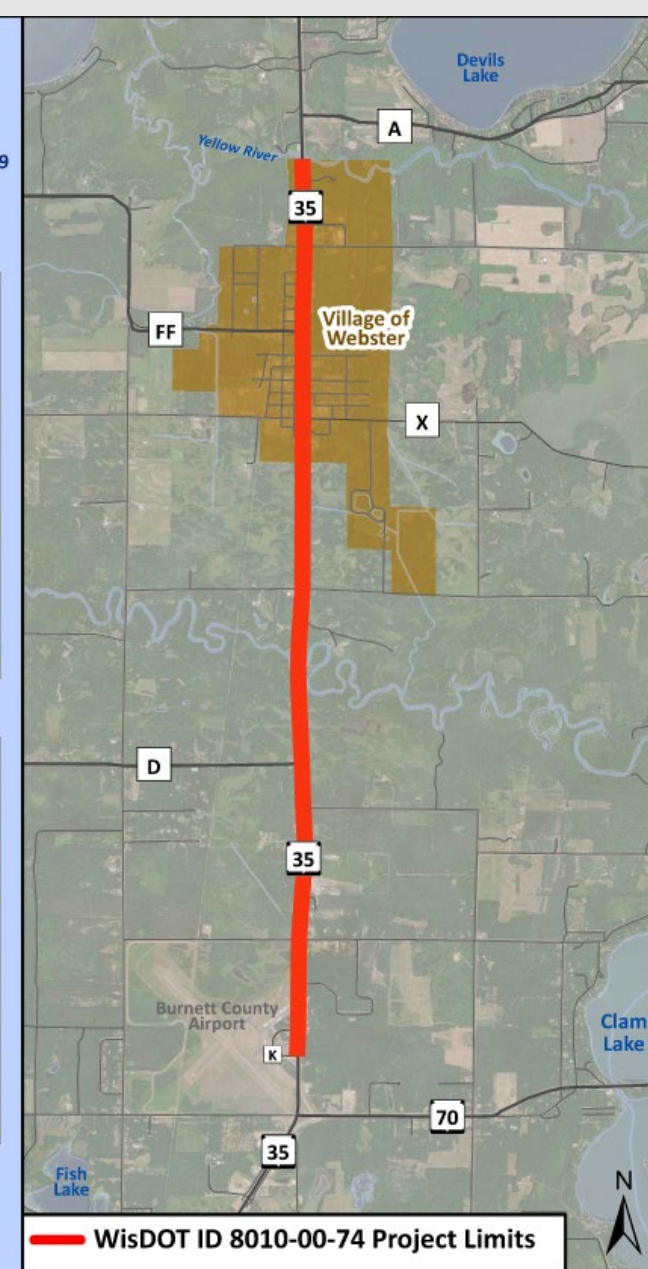
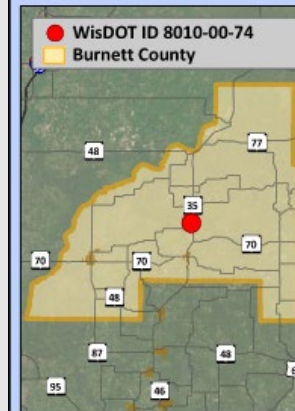
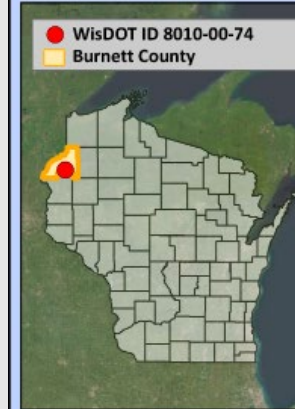
## WIS 35, Siren – Danbury

- Project limits

- County K South
- Just north of the Yellow River Bridge

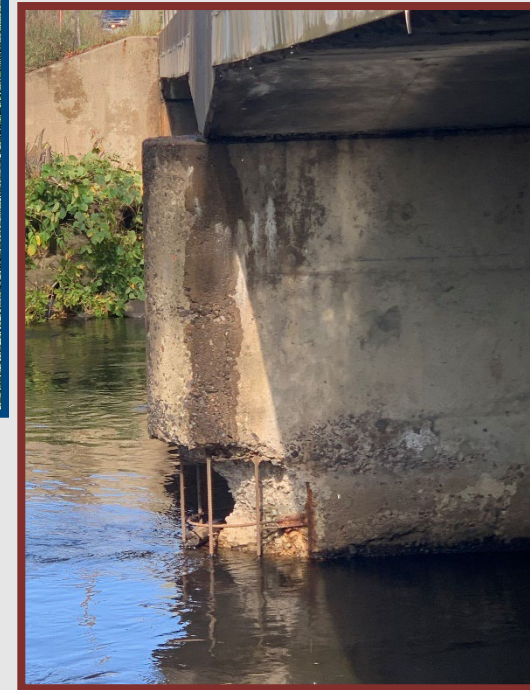
### Project Location Map

Project ID 8010-00-74  
Siren – Danbury  
CTH K to Yellow River Br B-07-0019  
WIS 35  
Burnett County



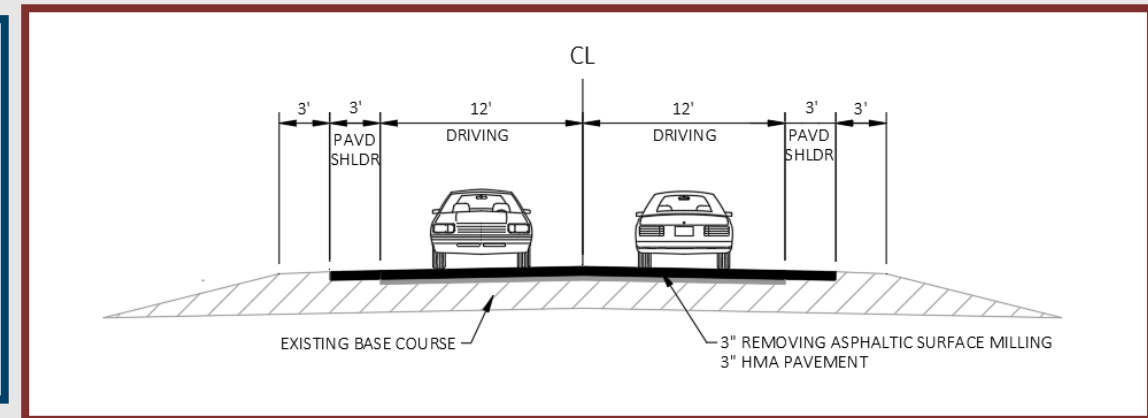
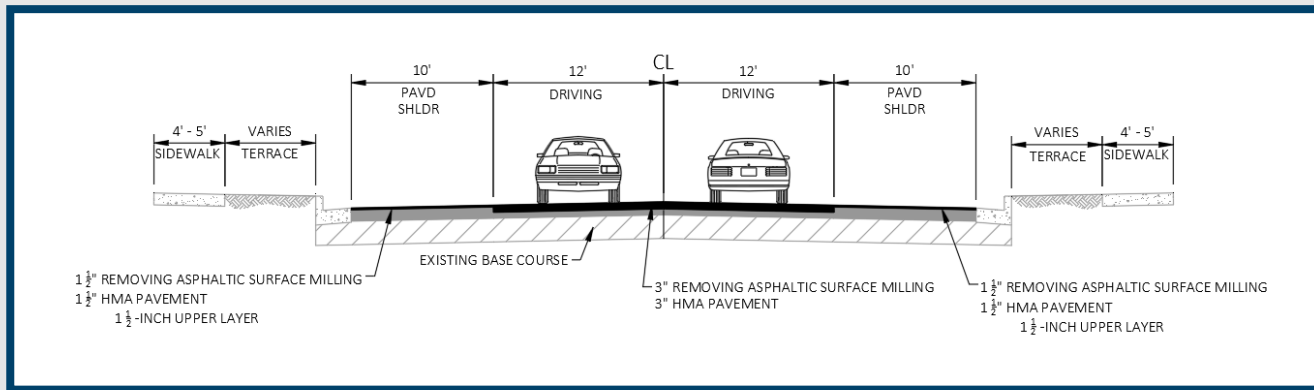
# Purpose and Need

- Deteriorating pavement
- Substandard sidewalk curb ramps and guardrail
- Corroding/damaged culverts
- Deteriorating elements of Yellow River bridge



# Proposed Improvements: Roadway

- Mill and overlay WIS 35 with 3 inches of asphalt pavement
- Upgrade guardrail at two locations
- Replace various culverts
- Replace select storm sewer facilities and reconstruct sidewalk curb ramps in the village of Webster



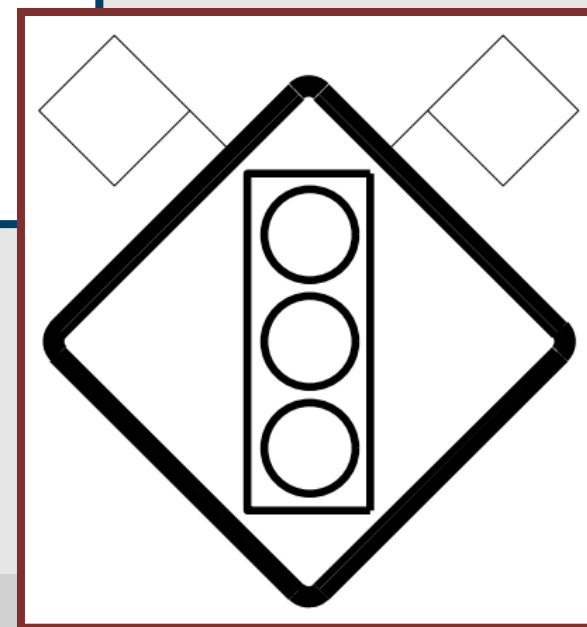
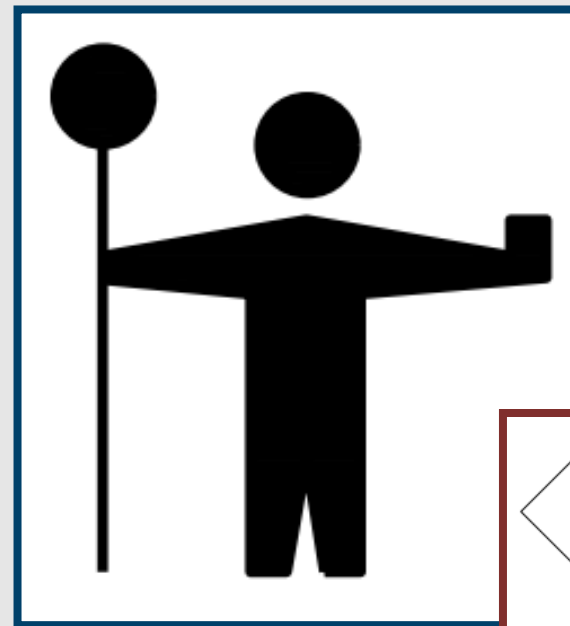
# Proposed Improvements: Bridge

- Rehabilitate the Yellow River Bridge
  - Make concrete surface repairs to piers and soffit
  - Replace railing with concrete parapet



# Traffic Impacts

- Roadway
  - Remain open to traffic
  - Single-lane closures controlled by flagging
- Bridge
  - Remain open to traffic
  - Single-lane closures controlled by temporary traffic signals



# Traffic Impacts

- Pedestrians
  - Curb ramp work will result in alternate, temporary sidewalk crossings





# Real Estate

- Permanent right of way and temporary limited easements necessary
  - Reconstruction of curb ramps and sidewalk
  - Replacement of culverts
- Real estate acquisition process expected to begin in 2025



# Schedule

- In-person Public Involvement Meeting June 2024
- Environmental Document Completion July 2024
- Preliminary Plan Submittal November 2024
- Final Plan Submittal March 2026
- Real Estate Acquisition Completion May 2026
- Construction 2030\*

\* Could be advanced to 2027 if funding becomes available.



# Public Comments

- Complete comment form at meeting and leave in comment box
- Complete form and submit it by July 12, 2024, by:
  - Email: [apeterson@correinc.com](mailto:apeterson@correinc.com)
  - Mail: Wisconsin Department of Transportation  
718 W. Clairemont Ave.  
Eau Claire, WI 54701  
Attn.: Christena O'Brien



# Project Contacts

**Andrew Peterson, WisDOT Consultant Project Manager**

- (608) 792-6851 or [apeterson@correinc.com](mailto:apeterson@correinc.com)

**Brad Halvensleben, Consultant Project Manager**

- (608) 663-1218 or [brad.halvensleben@klengineering.com](mailto:brad.halvensleben@klengineering.com)

